

allen + roth™

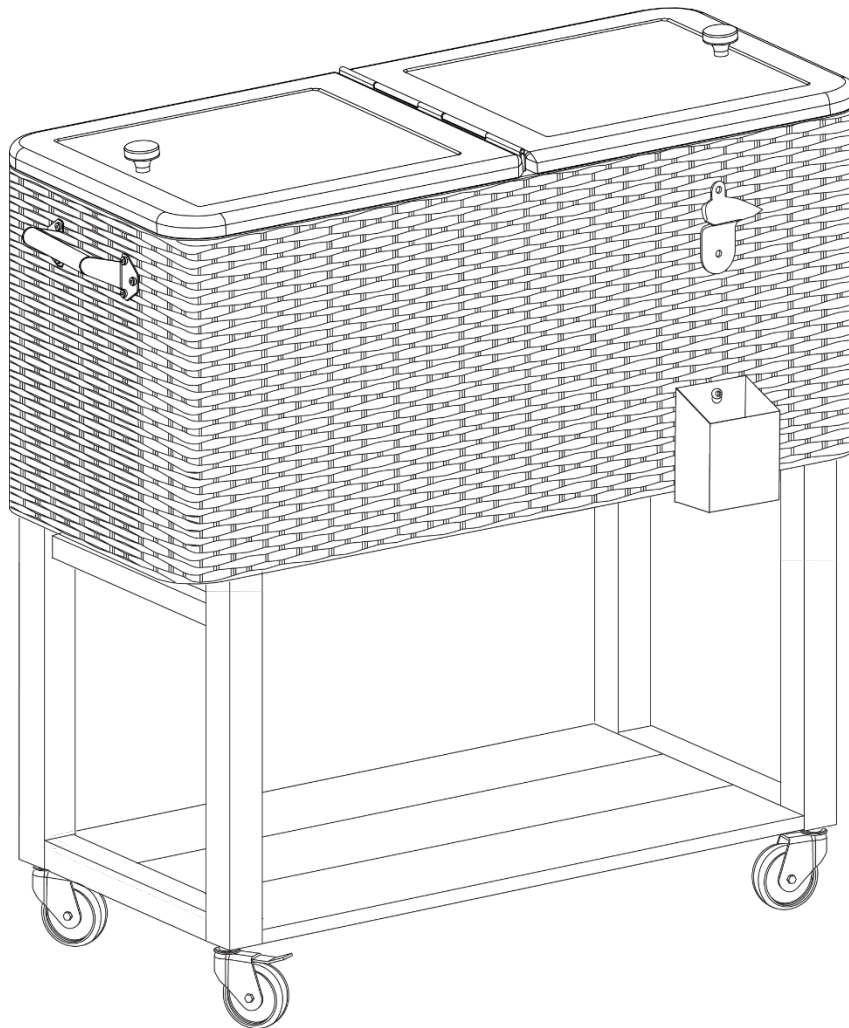
ALLEN + ROTH and logo design are trademarks or registered trademarks of LF, LLC. All rights reserved.

ITEM # 5203847

EMERALD COVE 80QT ROLLING PATIO COOLER

MODEL # PS-217-BR

ATTACH YOUR RECEIPT HERE



Serial Number _____ Purchase Date _____



Questions, problems, missing parts? Before returning to your retailer, call our customer service department at 909-287-0730, 8 a.m. - 5 p.m. PST, Monday - Friday. You may also contact us anytime at service@permasteel.life.

SS22045

TABLE OF CONTENTS

Package Contents..... 3

Hardware Contents..... 4

Safety Information..... 5

Preparation..... 5

Assembly or Installation Instructions..... 6

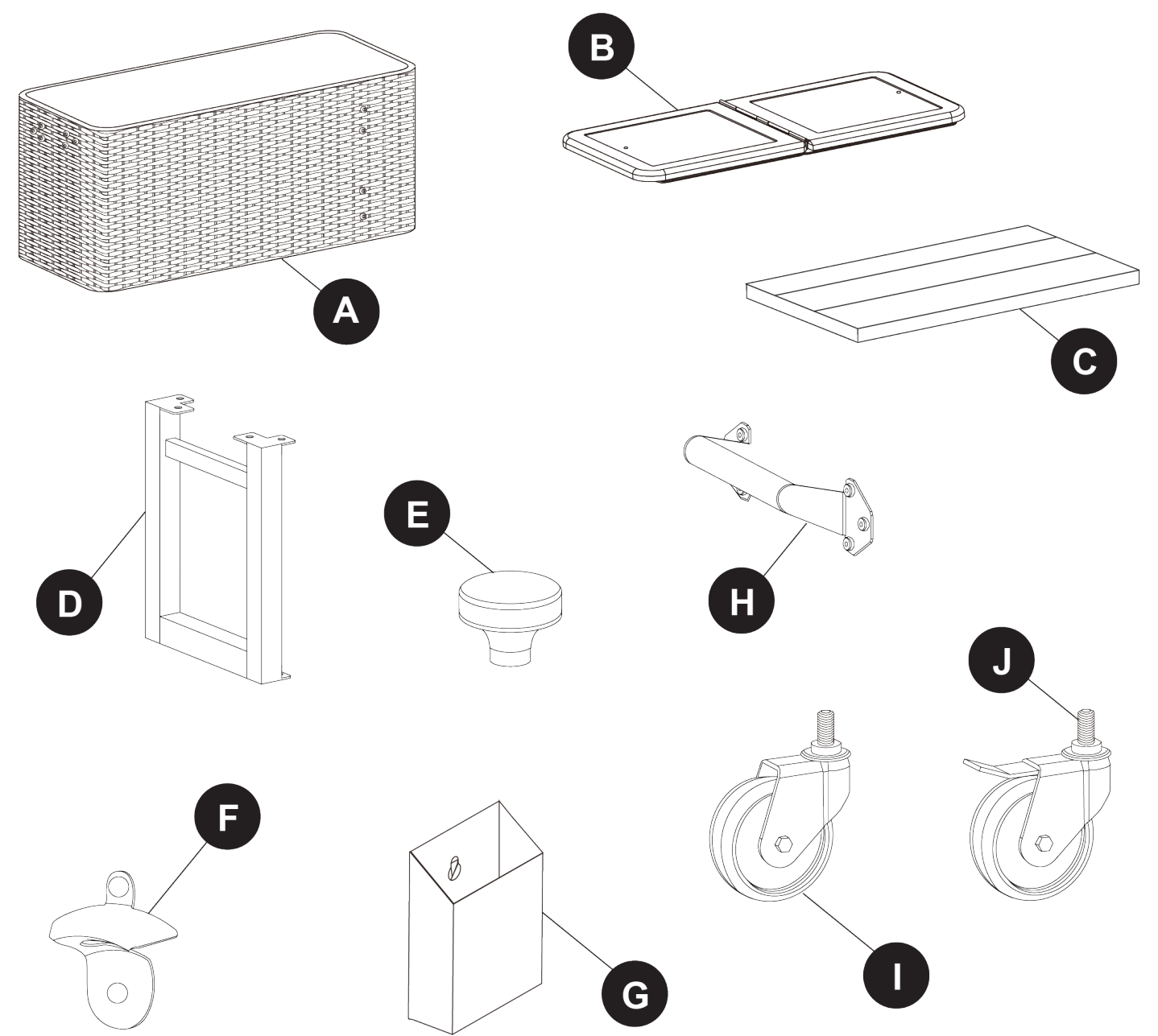
Care and Maintenance..... 8

Warranty..... 8

PRODUCT SPECIFICATIONS

SPECIFICATIONS
37.6in L x 20.6in D x 33.7in H
Steel & cane cover construction
80 QT capacity

PACKAGE CONTENTS



ITEM #	DESCRIPTION	PART #	QTY
A	Body (Basin)	PP217BR-A	1
B	Lid	PP217BR-B	1
C	Bottom Shelf	PP217BR-C	1
D	Leg Frame	PP217BR-D	2
E	Knob	PP217BR-E	2

ITEM #	DESCRIPTION	PART #	QTY
F	Bottle Opener	PP217BR-F	1
G	Cap Catcher	PP217BR-G	1
H	Handle	PP217BR-H	2
I	Caster	PP217BR-I	2
J	Caster with Brake	PP217BR-J	2

HARDWARE CONTENTS

AA

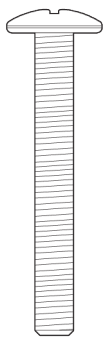


M6 x 13 mm
Bolt

Qty: 12

(Note: Another
12 bolts are
pre-attached to
the body)

BB

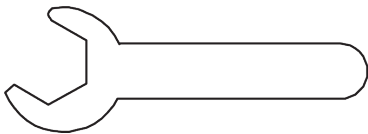


M4 x 32 mm
Screw

Qty: 2

(Note: Pre-attached
to lid knobs)

Tools included:



Open end wrench



Allen wrench



SAFETY INFORMATION

Please read and understand this entire manual before attempting to assemble, operate or install the product.

CAUTION

- Hand tools only, use of power tools could damage product.
- Remove all components, hardware and tools from box before assembly. Inventory and separate each of the hardware and components included.
- Please consider recycling all applicable packaging material.
- Assemble the cooler on a clean, soft surface to avoid damaging the surfaces.

PREPERATION

Before beginning assembly of product, make sure all parts are present. Compare parts with package contents list and hardware contents list. If any part is missing or damaged, do not attempt to assemble the product.

Estimated Assembly Time: 30 Minutes

Tools Required for Assembly (included): Allen wrench, open end wrench

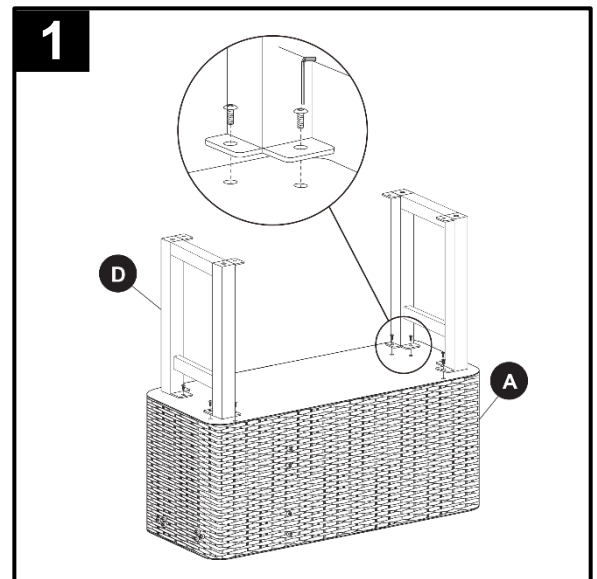
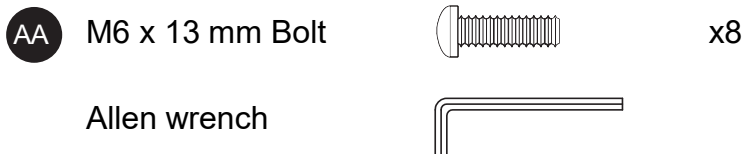
Helpful Tools (not included): #2 Phillips tip screwdriver

ASSEMBLY INSTRUCTIONS

1. Attach the leg frames (D) to the body (A) using eight M6 x 13 mm bolts.

Note: Do not fully tighten the bolts. Leg frames should be loose so that it can be aligned with the holes on the bottom shelf.

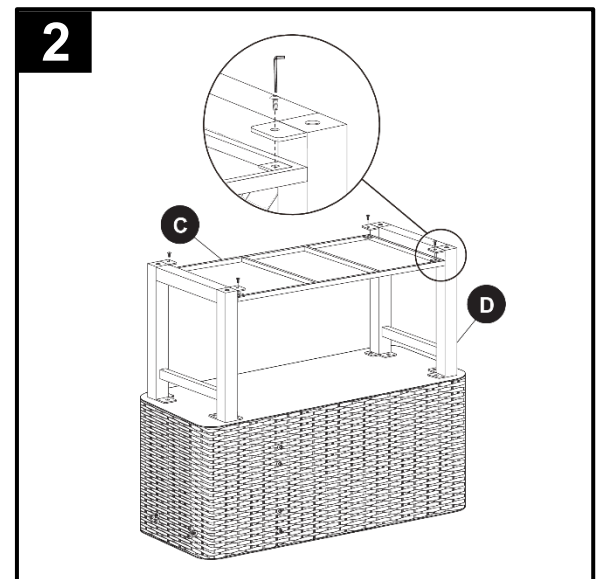
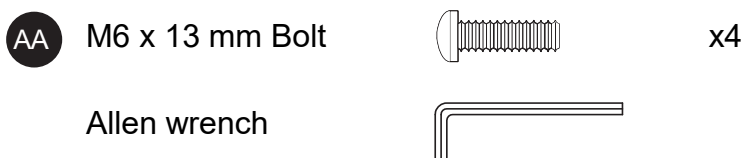
Hardware Used



2. Attach the bottom shelf (C) to the leg frames (D) using four M6 x 13 mm bolts. Note: Do not fully tighten the bolts until the bottom shelf is aligned with the holes on the leg frames.

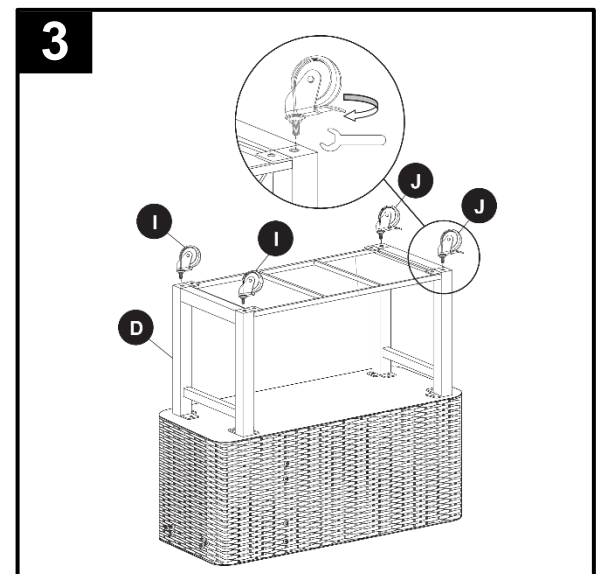
Now, tighten all the bolts left loose from step 1.

Hardware Used



3. Insert and thread casters (I) into the leg frame (D) with the provided open end wrench. Insert and thread casters with brake (J) into other leg frame.

Hardware Used

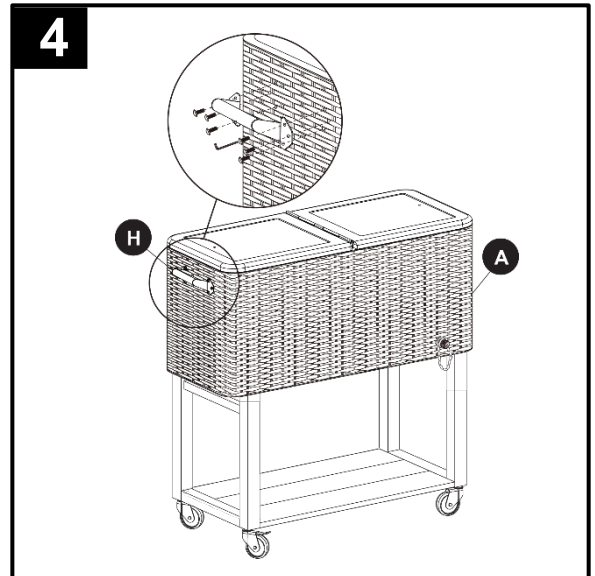
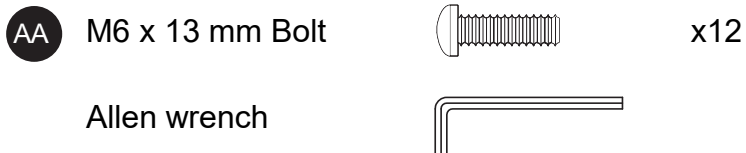


ASSEMBLY INSTRUCTIONS

4. Attach the body handles (H) to body (A) using twelve pre-attached M6 x 13 mm bolts, and tighten with the provided Allen wrench.

Note: Do not fully tighten the bolts until the handle is aligned with the holes on the body.

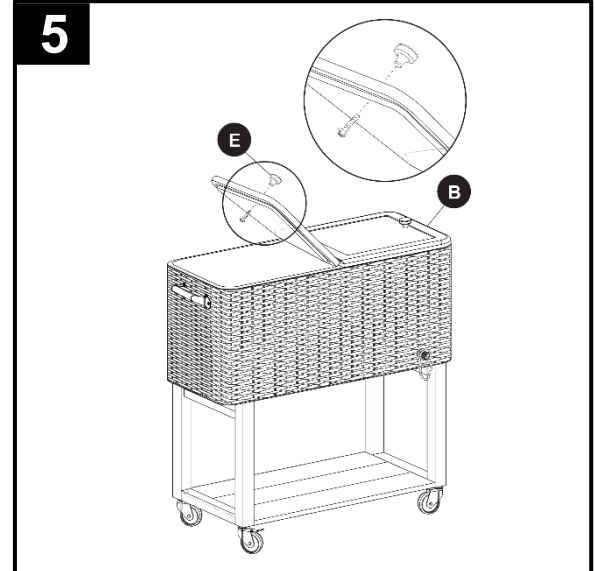
Hardware Used



5. Please remove the knobs (E) using a #2 Phillips tip screwdriver and re-assemble them on the lid (B) right-side up.

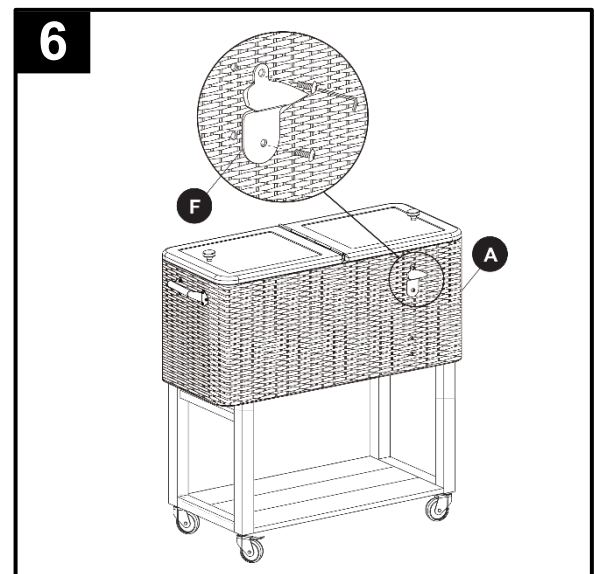
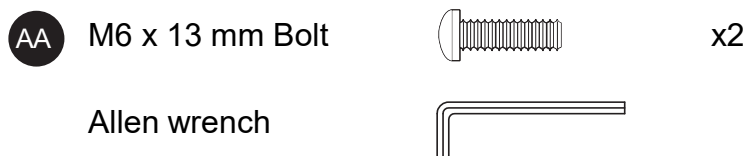
Note: The lid knobs are pre-attached to the lid. They are upside down.

Hardware Used



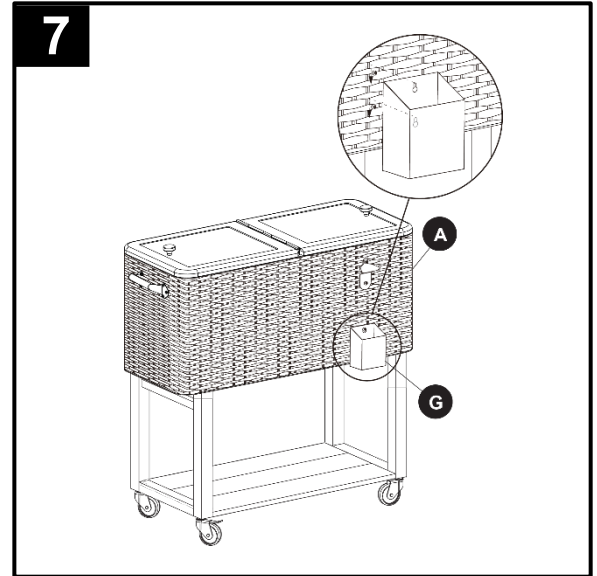
6. Attach the bottle opener (F) to body (A) using two pre-attached M6 x 13 mm bolts, and tighten with the Allen wrench.

Hardware Used



ASSEMBLY INSTRUCTIONS

7. Attach the cap catcher (G) to body (A) by sliding onto the two pre-installed shoulder bolts.



CARE AND MAINTENANCE

- Cooler must be drained of water and completely dried in and out with a soft-clean cloth after every use.
- When cooler is not in use for prolonged periods, it is recommended to store it in an enclosed dry place such as a storage shed or garage.
- During the season when cooler is frequently used, it is recommended to use a weather-proof cover to cover when not in use.
- Periodically, apply a light coat of automotive wax to protect & prolong the life & finish of the cooler.

WARRANTY

90 Days Limited Warranty