



TYPECASE

# Flexbook Touch

## User Manual



For more support, please email us at [support@typecase.co](mailto:support@typecase.co)

Your questions will be answered promptly

**TABLE OF CONTENTS**

---

TECHNICAL SUPPORT ..... 1

COMPATIBILITY ..... 1

SETUP ..... 2

SHORTCUT MAP ..... 3

TOUCHPAD FUNCTION ..... 3

INSTALLATION AND REMOVAL ..... 4

ROTATION ..... 5

USAGE ..... 5

CHARGING ..... 6

TROUBLESHOOTING ..... 7

PRODUCT SPECS ..... 8

COMPLIANCE ..... 8

## TECHNICAL SUPPORT

If you have any issues or questions, let us know ASAP! We would love to get you taken care of and happy right away! All units come with a full 12 month warranty, so you can relax and take comfort in your purchase.


For the fastest & friendliest support, contact us (not Amazon) via one of the contact methods below.

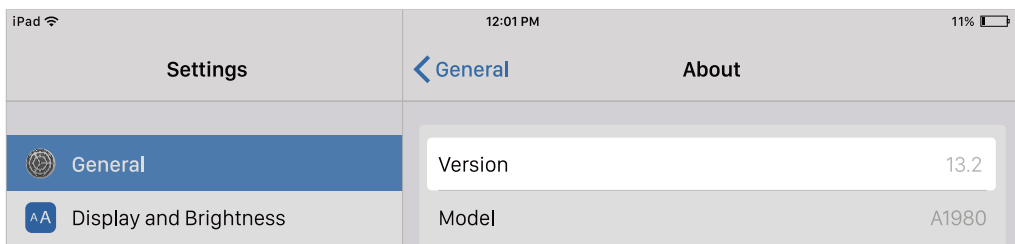
1. Email: [support@typecase.co](mailto:support@typecase.co)
2. Phone: 832 - 303 - 5080
3. Chat: <https://typecase.co/support>

## COMPATIBILITY

Compatible with iPadOS 13 (and newer). We recommend updating your iPadOS to **13.4.1** for best performance.

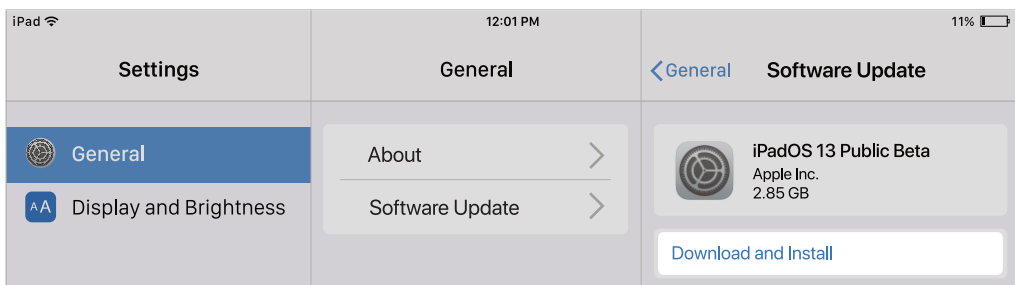
To check your iPad system version:

1. Go to Settings  > General > About > Software Version.
2. Upgrade your version to iPadOS **13.4.1** or above to use the touchpad function correctly.



To upgrade your iPadOS to the latest version:

1. Open your device's Settings  > General > Software Update.



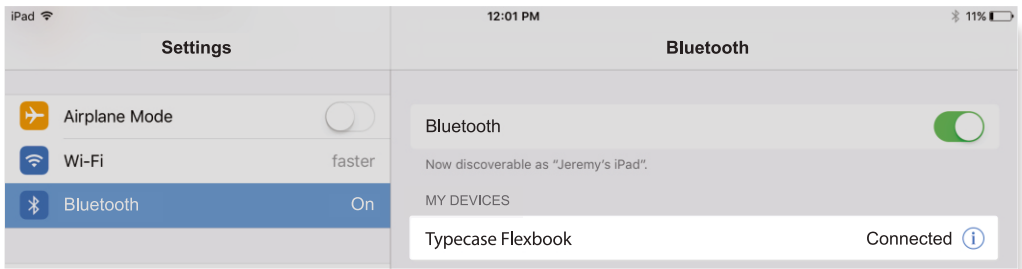
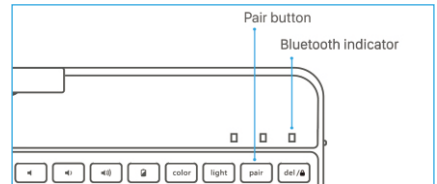
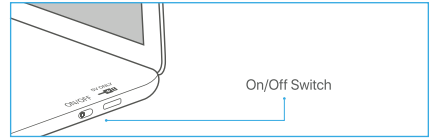
2. Tap Download and Install.

\* If you see Resume Download, tap that instead.

## SETUP

### To pair with your iPad:

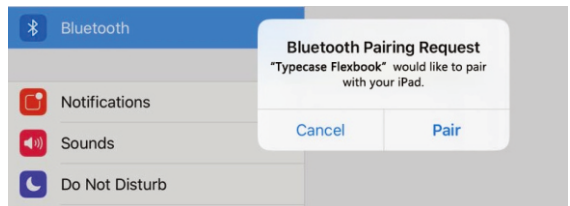
1. Switch **ON/OFF** switch to **ON** position.
2. Bluetooth indicator light will start blinking.  
If Bluetooth indicator light does not start blinking, press and hold the **'Pair'** button for **3 seconds**.
3. Toggle Bluetooth ON in the Settings app (device is connected when Bluetooth indicator stops flashing).



4. Tap **'Typecase Flexbook'** under **'MY DEVICES'** in the Bluetooth section of the Settings app.
5. Tap **'Pair'** in the pop-up window like shown below.

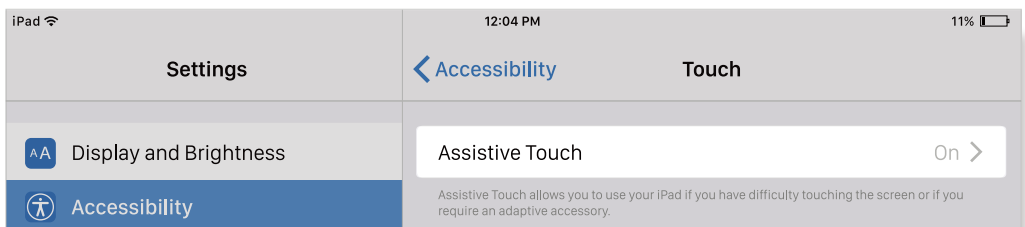
\* When pairing to new devices, please repeat steps 1-3.

Pairing process is considered complete after **'Connected'** indicator appears.



### If your system is 13.3.1, please follow the steps to enable touchpad function:

1. Go to Settings > Accessibility > Touch.
2. Make sure **Assistive Touch** option is turned On.



# SHORTCUT MAP

**Notice: Long Hold**  in any app to view available shortcuts.

Press once Home  
Press twice Ctrl Center  
Long Hold Siri

**Brightness**

Decrease Increase

**Media**

Back Play/Pause Forward

**Volume**

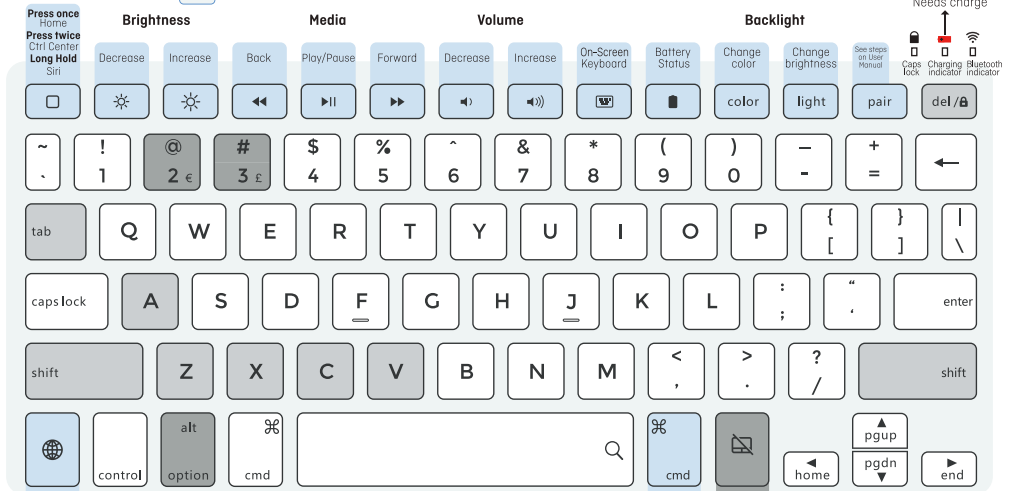
Decrease Increase

**Backlight**

On-Screen Keyboard Battery Status Change color Change brightness

Flashes Red Needs charge

Charging indicator Bluetooth indicator



**Switch Keyboard Language**

**Shortcut Keys**

CMD+Tab=APP switch  
CMD+A=Select all  
CMD+C=Copy  
CMD+V=Paste

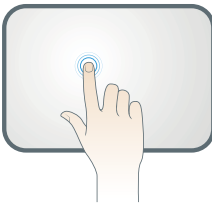
CMD+Z=Undo  
CMD+X=Cut  
CMD+Shift+3=Screen Shot  
Color=Change backlight color

Light=Backlight brightness (low, medium, high, off)  
Alt+Del=Screen Lock/Unlock  
Option+Shift+2=€;Option+3=£

**Long Hold** - App specific shortcut shows up (e.g. when you are in an App, hold this key and you will see all the shortcuts that can be used in this App).

## TOUCHPAD FUNCTION

**Notice: Make sure bluetooth connected and touchpad function turned on !**

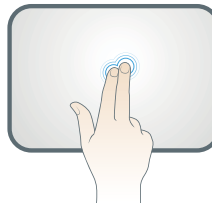


### One Finger Tap Mode

**Action 1:** Tap one time while on main interface;  
**Function:** mouse cursor manipulation.

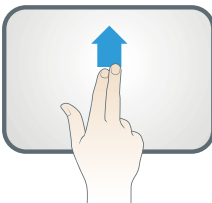
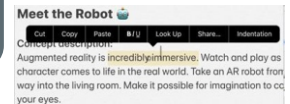
**Action 2:** tap 2 times and slide;  
**Function:** select or move the icon

**Jump out of the mode:** refer to the right instruction.



### Two Fingers Tap Mode

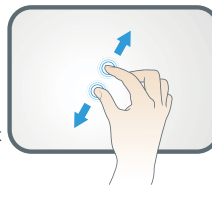
**Action 3:** Tap the pad one time;  
**Function:** Show the shortcuts.



### Two Fingers Scroll

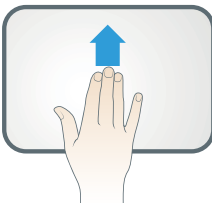
**Action 4:** Slide fingers up or down;  
**Function:** Scroll web page or file up/down or scroll splitted screen

**Action 5:** Slide fingers left or right  
**Function:** Turn the page to the left or right



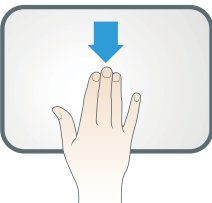
### Two Fingers Zoom

**Action 6:** Two fingers slide for zooming in or out.  
**Function:** Can only be used on the websites or spreadsheets.



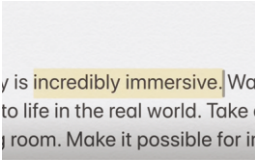
### Three Fingers Swipe UP

**Action 7:** Swipe Up;  
**Function:** Switch between Main interface and previous program or page.



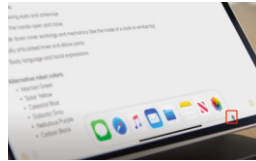
### Three Fingers Swipe Down

**Action 8:** Swipe Down;  
**Function:** Switch between main interface and splitted screen.



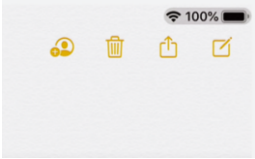
### Shift+Cursor

**Function:** Select the text



### Move the cursor to the bottom of the screen

**Function:** Get access to the dock to switch

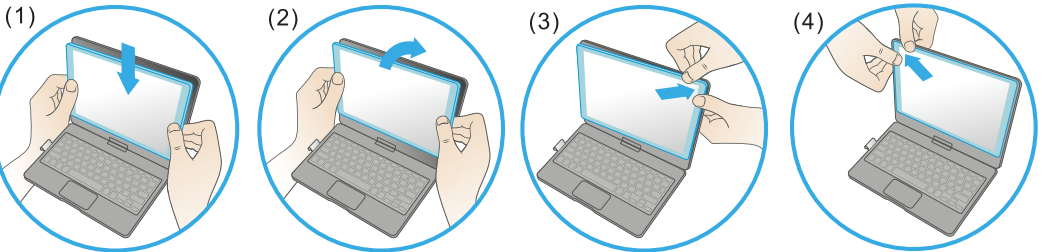


### Move the cursor to the upper corner

**Function:** Enter the control center

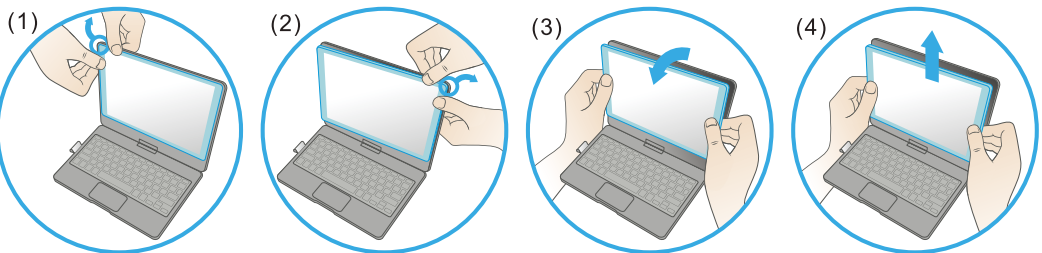
## INSTALLATION AND REMOVAL

### Installation:



1. Align the lower edge of the iPad with the keyboard case.
2. Slightly push the iPad until all of the edges align.
3. Press the upper corner of the iPad with your fingers to put it in place.
4. Repeat pressing the remaining corners until iPad is held tightly inside the case.

### Removal:



1. Hold iPad on both sides of the upper corner and use thumbs to gently push off the back cover. It's held in place by two tabs.
2. Repeat for the second upper corner.
3. Peel away the upper part completely.
4. Pull up to remove iPad from case.

# ROTATION

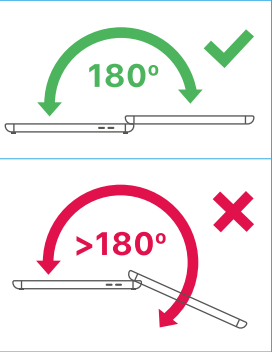


Twist to rotate 360°



Open up to 180°

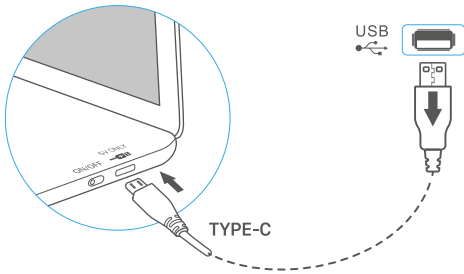
## WARNING



# USAGE



## CHARGING



iPad adapters

1. Switch on the keyboard (if battery light is flashing, please charge the keyboard).
2. Plug the charging cable (included) into the keyboard and power adapter (not included, iPad or iPhone power adapter recommended);
  - a) Battery indicator turns red when keyboard is charging;
  - b) Battery indicator turns blue when charging is complete.

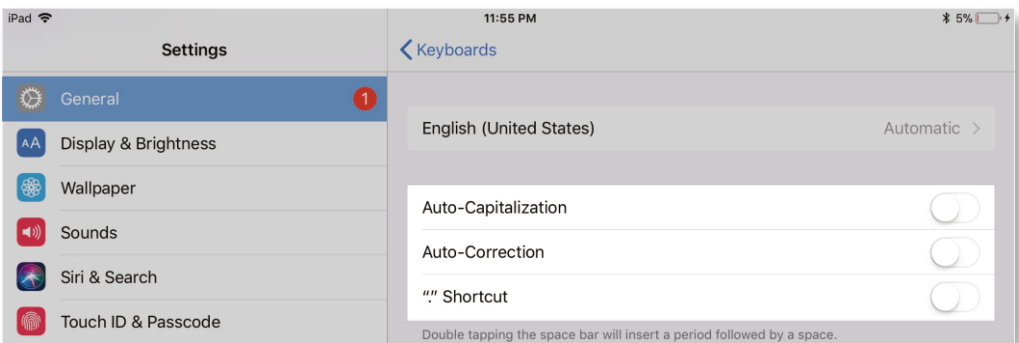
## TROUBLESHOOTING

If the keyboard is not working correctly, please check the following:

1. The Bluetooth function on the iPad (or other Bluetooth devices) is enabled;
2. The Bluetooth keyboard is within 33 feet;
3. The Bluetooth keyboard is charged;
4. Make sure the keyboard is turned on (the battery indicator is illuminated);
5. Press the key 'Pair' and check the Bluetooth status;
6. Make sure a keyboard has already paired via Bluetooth.

If you have unwanted auto-correction or punctuation, please follow these steps:

1. Open Settings app > General > Keyboard > **Hardware Keyboard**;
2. Toggle **OFF** Auto-Capitalization, Auto-Correction, and "." shortcut (please refer to the picture below).





### If Bluetooth pairing fails, please try the following steps:

1. Remove all Bluetooth devices on your iPad;
2. Switch off the Bluetooth function on your iPad;
3. Reboot the iPad;
4. Turn on the Bluetooth on your iPad;
5. Switch the keyboard off and on;
6. Repeat the steps described on page 2 and 3 to pair the keyboard.

## PRODUCT SPECS

---

**Operating distance:** 10 meters (33 feet)

**Modulation System:** GFSK

**Working voltage:** 3.0-4.2V

**Working current:** 0.88-3.85mA

**Sleeping current:** < 125µA

**Charging current:** 500-800mA

**Continuous working  
time without backlight:** 60 hours

**Charging time:** < 2 hours

**Charging voltage:** 5V

**Key's life span:** > 5 million strokes

**Operating temperature:** -10 ±55°C

**Maintenance:** Please preserve the keyboard under normal temperature and recharge under normal voltage.

## COMPLIANCE

---

NOTE: This equipment has been tested and found to comply with the limits for a Class B digital device, pursuant to part 15 of the FCC Rules. These limits are designed to provide reasonable protection against harmful interference in a residential installation. This equipment generates uses and can radiate radio frequency energy and, if not installed and used in accordance with the instructions, may cause harmful interference to radio communications. However, there is no guarantee that interference will not occur in a particular installation. If this equipment does cause harmful interference to radio or television reception, which can be determined by turning the equipment off and on, the user is encouraged to try to correct the interference by one or more of the following measures:

- Reorient or relocate the receiving antenna;
- Increase the separation between the equipment and receiver;
- Connect the equipment into an outlet on a circuit different from that to which the receiver is connected;
- Consult the dealer or an experienced radio/TV technician for help.

Changes or modifications not expressly approved by the party responsible for compliance could void the user's authority to operate the equipment. This device complies with Part 15 of the FCC Rules. Operation is subject to the following two conditions:

- 1) this device may not cause harmful interference, and
- 2) this device must accept any interference received, including interference that may cause undesired operation.