

Rice Robot XL

READY
SET
RICE!

the cooker that knows
when it's ready!

2X MORE
RICE!

OFFICIAL LINKS:
SOCIAL MEDIA/RECIPE GUIDE



CERAMIC
NONSTICK

MADE WITHOUT PFOA • PTFE • PFOS

5 YEAR
LIMITED
WARRANTY
WARRANTY TERMS
Available at
www.emsoninc.com/warranty

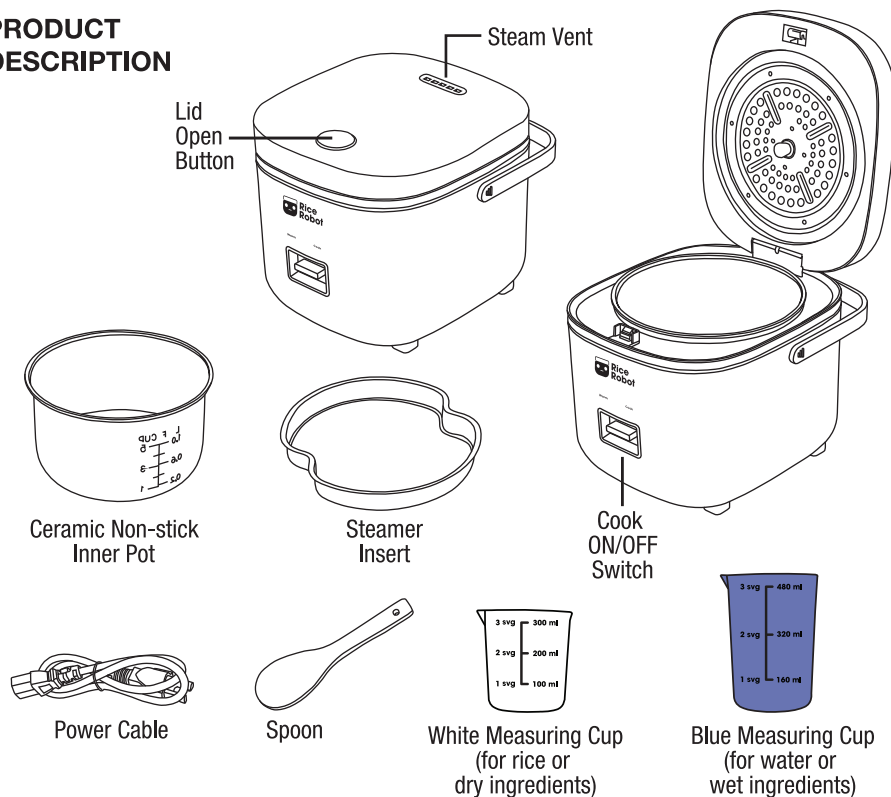
- 1 ADD WATER CUP
- 2 ADD RICE CUP
- 3 CLICK TO COOK



2 LITER

INSTRUCTIONS

PRODUCT DESCRIPTION



IMPORTANT SAFEGUARDS

When using electrical appliances, basic safety precautions should always be followed. Please read the safeguards below before using your product.

1. Read all instructions.
2. Caution is needed when opening the rice cooker as built up steam may be quickly released.
3. CAUTION: Do not touch hot surfaces. Use handles or knobs.
4. To protect against electrical shock do not immerse the cord, plug, or appliance in water or other liquids and the connector must be removed before the appliance is cleaned and the appliance inlet must be dried before the appliance is used again.
5. Close supervision is necessary when any appliance is used by or near children.
6. The appliance is not intended for use by persons (including children) with reduced physical, sensory or mental capabilities, or lack of experience and knowledge, unless they have been given supervision or instruction concerning use of the appliance by a person responsible for their safety. Children should be supervised to ensure that they do not play with the appliance.
7. Unplug from outlet when not in use and before cleaning. Allow the inner pot to cool off completely (approximately 20 minutes) before removing it from the appliance.

8. Do not operate any appliance with a damaged cord or plug or after the appliance malfunctions or has been damaged in any manner. Return the appliance to the nearest authorized service facility for examination, repair or adjustment.
9. The use of non Rice Robot approved accessories are not recommended by the appliance manufacturer as they may cause injuries.
10. Do not place any objects on top of the appliance and over the steam vent during operation.
11. Do not place on or near a hot gas or electric burner, or in a heated oven.
12. While the appliance is in operation, do not touch the steam vent and be careful of hot steam being ejected when opening the lid to avoid burn.
13. Always place the appliance on a firm and level surface.
14. The heat element surface is subject to residual heat after use.
15. WARNING: Do not fill water higher than the level which is indicated in the inner pot to avoid water overflow.
16. Do not let the cord hang over edge of table or counter, or touch hot surfaces.
17. Do not let the power cord touch or be close to a steam vent. It will damage the insulation layer of wires.
18. Do not operate the appliance without any food or liquid inside.
19. Extreme caution must be used when moving an appliance containing hot liquids.
20. Always attach the plug to appliance first, then plug the cord into the wall outlet.
21. Do not use appliance for anything other than intended use.
22. CAUTION: INDOOR USE ONLY, Do not use outdoors.
23. Do not immerse in water.
24. CAUTION: The rice cooker will remain on "Keep-Warm" until it is unplugged from the power outlet. It is not recommended to leave rice on "Keep-Warm" mode for more than 3 hours.
25. This appliance is intended to be used in household and similar applications such as:
 - staff kitchen areas in shops, offices and other working environments;
 - farm houses;
 - by clients in hotels, motels and other residential type environments;
 - bed and breakfast type environments
26. Intended for countertop use only.
27. WARNING: Spilled food can cause serious burns. Keep appliance and cord away from children. Never drape cord over edge of counter, never use outlet below counter, and never use with an extension cord.

SAVE THESE INSTRUCTIONS FOR HOUSEHOLD USE ONLY

UNPACKING - BEFORE FIRST USE

Unpack the unit and all parts and remove all packaging materials. Before using the Rice Robot for the first time, wipe the surface of the appliance with a damp cloth. Rinse the inner pot, steamer, spoon and both measuring cups in warm soapy water prior to use. Dry all parts thoroughly. Refer to a full cleaning instructions if needed. WARNING: Do not immerse the Rice Robot unit and power cable in water or any other liquid. Do not use abrasive cleansers.

USAGE



CAUTION: Make sure the inner pot is inserted into the appliance.

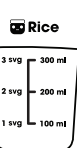
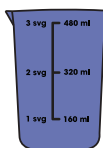
The inner pot has to be in full contact with the heating plate.

To ensure that, slightly rotate it a few times.



While the appliance is in operation, do not touch the steam vent and be careful of hot steam being ejected when opening the lid to avoid burn.

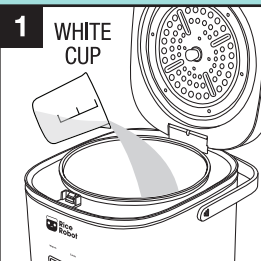
Water



PLEASE NOTE: If using 1 full white cup of dry rice and 1 full blue cup of water, it will fill up half of the Rice Robot. This will yield 4 US cups of cooked food.

To fill up the whole Rice Robot with cooked food, use 2 cups of white and blue each. This will yield 8 US cups of cooked food.

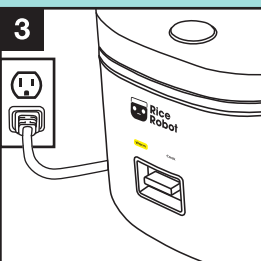
Want less rice? Just use the measurements on the cups to make less servings.



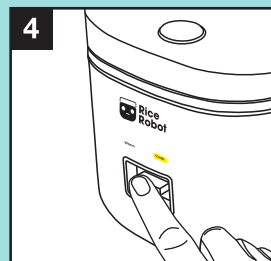
- Fill the white measuring cup (included) with rice and add it into the inner pot.
- Note: If your rice needs rinsing, do so in a separate container first. Drain all the water.



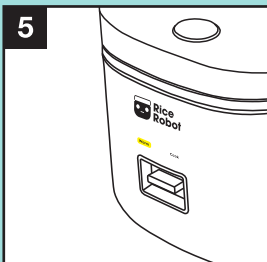
- Fill the blue measuring cup (included) with water and add it into the inner pot.
- Stir the rice and water to make sure the rice is distributed evenly in the inner pot.



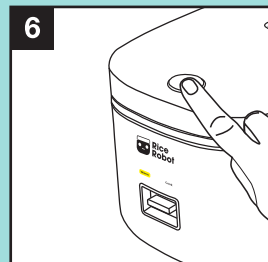
- Press to close the cover until it clicks.
- Plug one end of the power cord into the rice cooker and the other end with the plug into the power outlet.
- **Warm** indicator will automatically light up.



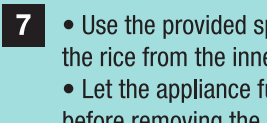
- Press the Power switch down to start cooking rice.
- **Cook** indicator will light up on the unit during the cooking process.



- After the cooking process is completed, **Warm** indicator will automatically light up.
- **Warm** will remain lit up on the unit indicating the food will be kept warm until you unplug the appliance.



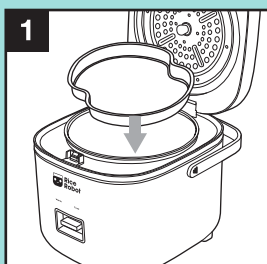
- Unplug the appliance and let it cool down slightly (approximately 1 minute).
 - Press the Open button to open the lid.
- Using pot holders, fully open the lid.
- **CAUTION: Be careful of hot steam being ejected when opening the lid to avoid burn.**



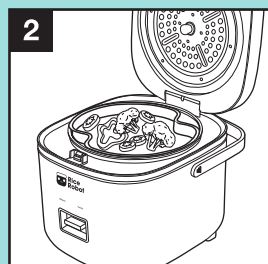
- Use the provided spoon to remove the rice from the inner pot.
- Let the appliance fully cool down before removing the inner pot.

USING STEAMER INSERT

NOTE: Steamer tray is designed to steam your foods while cooking the rice in the inner pot.



Once you add rice and water to the inner pot, place the steamer insert on top.



Add food to be steamed to the insert. Make sure it is not filled higher than the top edge.



- Close the lid and press the Power switch down to start cooking.
- **Cook** indicator light will be displayed on the unit during the cooking process.

CLEANING



CAUTION: Unplug the rice cooker prior to cleaning. Always allow the unit to fully cool (approximately 20 minutes) before cleaning.

INNER POT AND STEAMER INSERT:

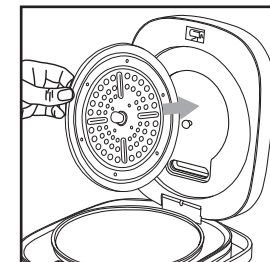
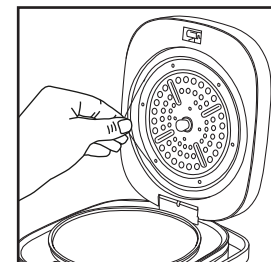
Inner Pot and Steamer Insert are dishwasher safe. You may also wash both in warm soapy water. Do not use any abrasive cleaners. Dry thoroughly.

UNIT AND HEATING ELEMENT:

Wipe the inside and outside of the rice cooker with a damp cloth. Dry thoroughly.

INNER LID INSERT:

1. Pull to remove the inner lid insert. See Diagram below.
2. Wash the lid insert in warm soapy water. Do not use any abrasive cleaners. Dry thoroughly.
3. Place it back and pop it in.



SPECIFICATIONS

Rated voltage and frequency: AC 120V – 60Hz

Input power: 400W

Rated capacity of rice: approximately 2L

Product dimensions (L x W x H): 10.63 in. x 9.06in. x 8.07in. (270mm x 230mm x 205mm)

Product Weight: 4.33lbs (1.96kg)

Customer Service: 1-800-423-4248

RICE ROBOT™ XL ITEM NO. 6465MS
DISTRIBUTED BY EMSON® NEW YORK, NY, 10001 ©2025 EMSON® ALL RIGHTS RESERVED.