

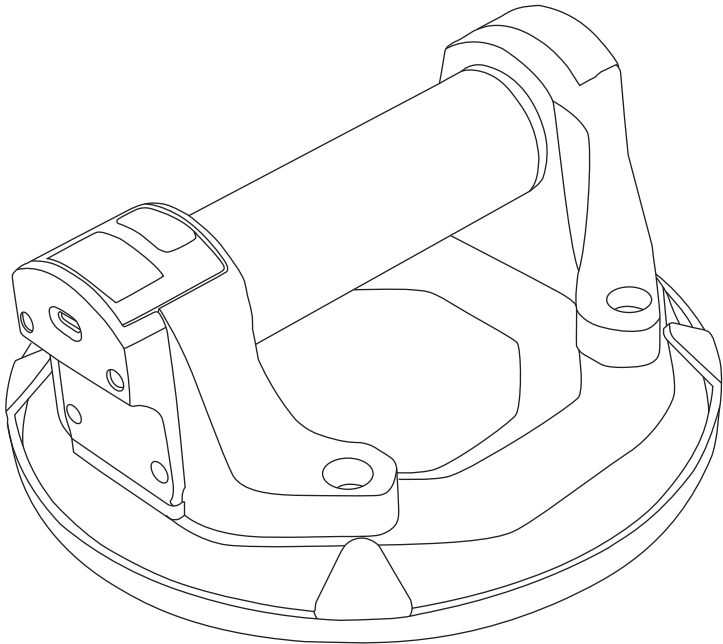


KOBALT and logo design are trademarks or registered trademarks of LF, LLC. All rights reserved.

ITEM #6023544  
MODEL #59034

DUAL-POWER RECHARGEABLE  
VACUUM SUCTION CUP

ATTACH YOUR RECEIPT HERE



Serial Number \_\_\_\_\_

Purchase Date \_\_\_\_\_

Thank you for purchasing this Kobalt product.  
Questions, problems or missing parts?  
Before returning, contact us on:  
**1-888-356-2258**, 8 a.m. - 8 p.m., EST, Monday - Sunday or [ascs@lowes.com](mailto:ascs@lowes.com).

TABLE OF CONTENTS

Package Content..... 3

Button functions and display screen..... 4

Safety Information..... 5

Operating Instructions..... 6

Care and Maintenance ..... 9

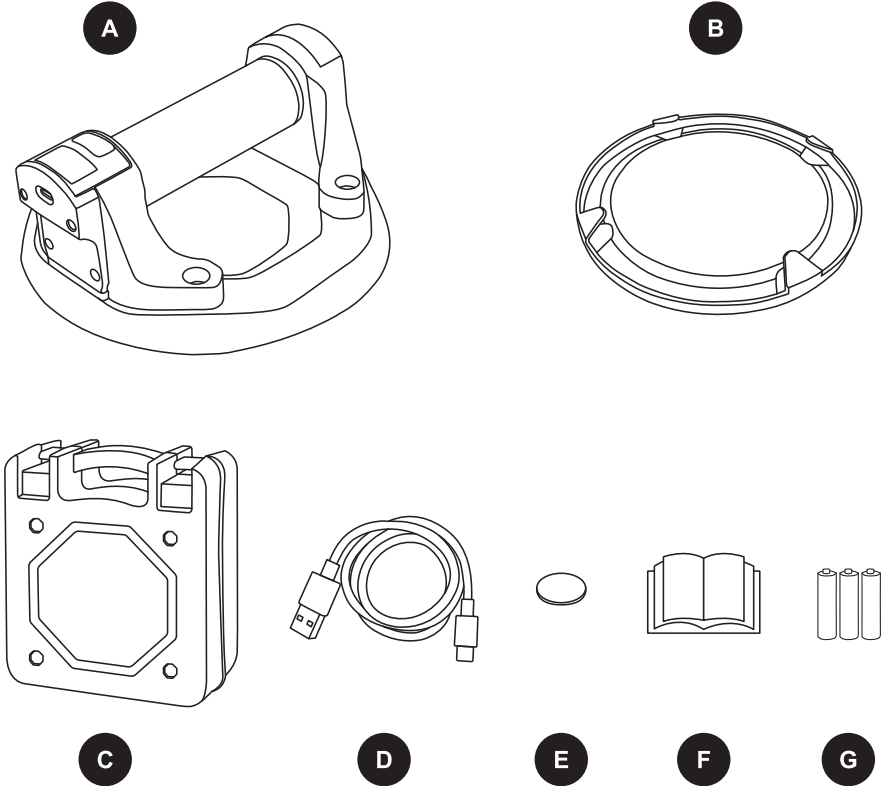
Troubleshooting ..... 9

Warranty ..... 9

PRODUCT SPECIFICATIONS

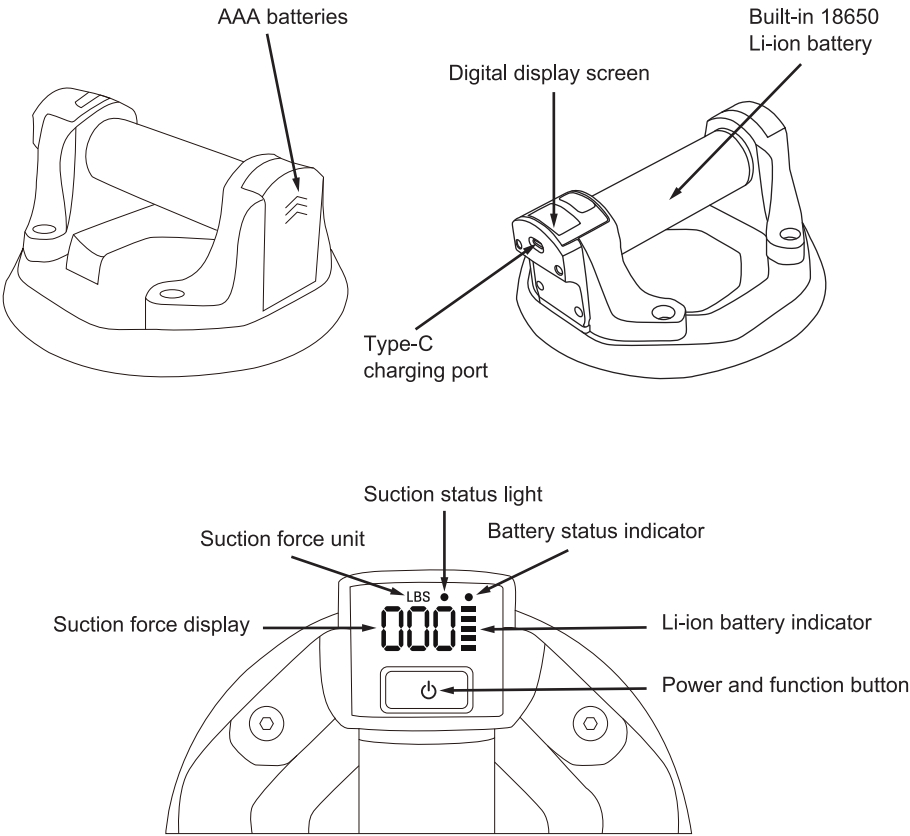
COMPONENTS	SPECIFICATIONS
Description	Dual-Power Rechargeable Vacuum Suction Cup
MODEL #	59034
Battery	Li-ion 2600mAh, 3.7VDC 1A
Power	3.5W
Input	5VDC 1A
Back up Power	3 x AAA Battery
Max Loading Capacity	330LBS
Suction and release cycles under Li-ion battery power	3000 Times
Suction and release cycles under AAA batteries	600 Times
Charging time	3-4 Hours
Maximum operating temperature	50 °C 122 °F
Minimum operating temperature	-10 °C 14 °F

PACKAGE CONTENTS



PART	DESCRIPTION	QUANTITY
A	Dual-Power Rechargeable Vacuum Suction Cup	1
B	Protective cover	1
C	Plastic Carrying Case	1
D	Type-C charging cable	1
E	Extra Air filter	1
F	Manual Instruction	1
G	AAA battery	3

BUTTON FUNCTIONS AND DISPLAY SCREEN



## SAFETY INFORMATION


Please read and understand this entire manual before attempting to assemble, operate or install the product.

- The Electric Vacuum Suction Cup is a versatile lifting tool designed for securely handling and transporting glass, metal sheets, tiles, and other non-porous materials. It features a powerful vacuum system that ensures a strong grip during use, enhancing safety and efficiency.
- Read all safety instructions carefully before using the device to prevent personal injury or equipment damage.

## WARNING

- **Do not use suction cup for climbing. Suction cup is not designed for climbing.**  
**Using non-climbing equipment can result in serious injury or death due to potential failure.**
- **Dry use only!**

- Before using a suction cup, make sure the suction cup's base surface and object's surface is clean, dry, and free of any dirt, debris, adhesives, or oil. Any foreign material on the surface can interfere with the suction cup's ability to create a vacuum and cause it to slip or fall.
- This suction cup is suitable for lifting objects with flat, smooth surfaces. Do not use the suction cup on porous, uneven surfaces or surfaces with cracks and grooves.
- Do not use the suction cup on rough, leaky, or irregularly shaped objects, or objects with curved surfaces.
- Do not immerse the suction cup in water or use it in environments with high humidity. If the surface of the object being moved or the suction cup's contact surface is wet, make sure to wipe it dry before use.
- Keep the suction cup out of reach of children. Children should not use this suction cup.
- The maximum loading capacity of the suction cup is 330 lbs. Do not use the suction cup to lift objects exceeding this capacity.
- Before moving any object, double-check that the suction cup is securely attached and that the suction status light is green to ensure proper function before proceeding with lifting.
- Avoid placing the suction cup on any sharp edges or corners, as this can cause the cup to lose suction or break.
- After using the suction cup, clean the rubber base, and use the protective cover provided to ensure the suction cup remains sealed and ready for the next use.
- Before using the suction cup, check the rubber base for any damage, especially around the sealing area at the bottom. If there is any damage, do not use it for lifting objects.
- Wear personal protective equipment and always wear safety goggles.

 **WARNING:** This product can expose you to chemicals including lead which is known to the State of California to cause cancer and birth defects or other reproductive harm. For more information go to <http://www.p65warnings.ca.gov>.

## SAFETY INFORMATION

### CAUTION

- The suction cup is in the powered-off status during charging and cannot perform suction tasks. Therefore, please do not attempt to use the suction cup while charging.
- When charging is completed, the suction cup screen will turn off. After unplugging the charging cable, the display will show 5 battery indicator bars to inform you of the battery level. Then the screen will turn off and the suction cup will automatically shut down in 30 seconds.
- The charging time is approximately 3-4 hours. For safety, please do not overcharge the battery or leave the suction cup connected to the charger for extended periods.
- If the suction cup is not used for a long period, please regularly charge it to ensure the battery's lifespan does not reduce due to long-term disuse. It is recommended to charge it once a month.
- If the suction cup is not used for an extended period, please remove the AAA batteries from the backup battery compartment to prevent leakage and ensure the backup battery compartment remains functional.

### OPERATING INSTRUCTIONS

**For first use, remove the battery insulating pull tab protecting the AAA batteries in the backup battery compartment.**

**1. Power on:** Press and hold the power button for 3 seconds to turn on the device.

#### **2. To attach**

- Place the suction cup on the surface of the object. With the device powered on, press the power button once to start the suction. The suction force value on the display will begin to increase. Once it reaches 330LBS, the status light will change from red to green, and the suction will stop. At this point, you can lift the handle and begin moving the object. Please do not use it to lift/move the object if the light still shows red.
- During use, if the suction cup gradually loses air, the suction force value will decrease. When it drops to 286LBS, the status light will change from green to red, and the vacuum pump starts to vacuuming automatically. When the suction force value returns to 330LBS, the status light changes from red to green and stops vacuuming. This cycle will repeat.
- In the working status, if there is no pressure release, the suction cup will repeatedly pump air according to the set value to maintain the suction force. It will not shut down even after a long period of suction, until both the lithium and AAA batteries are completely drained.
- If the lithium battery runs out of power during the vacuuming process, the display screen will turn off and the device will shut down. Suction cup will remain attached to the object, instead of release or fall off immediately. To un-attach it, you will need to recharge the Li-battery, turn on the device, and then double-click the button to release.

## OPERATING INSTRUCTIONS

### Note:

- \* If the suction cup does not reach a 286 lbs. holding capacity within 30 seconds during vacuuming process, the product will stop vacuuming. The user will need to double-click the power button to release air and then click the power button once again to start vacuuming.
- \* When the suction cup is powered by AAA batteries, and the batteries run out during the vacuuming process, the product will stop vacuuming. If the user notices the display is still on, they should replace the AAA batteries with new ones, double-click the power button to release air, and then click the power button once again to resume vacuuming.
- \* If the lithium battery and AAA batteries are drained, the display will turn off and the device will shut down. If you install/replace the AAA batteries directly at this time, the suction cup may make a sound, which is normal and will disappear after a while. The suction cup will not work at this time. If you want to resume working, you will need to charge the lithium battery, then turn on the device.
- \* Whenever you change the AAA battery, please double-click button to reset.

### 3. To release

- \* After moving the object into place, quickly double-click the power button to start the pressure release. When the suction force value returns to "000," the status light will change from green to red, and at this point, the suction cup can be removed from the object.
- \* If the suction cup cannot be removed after pressure release, you can use your hand to gently press the edge of the suction cup where it contacts the object to help detach the suction cup from the object.

### 4. Power off

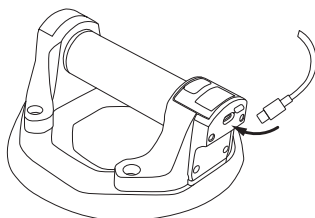
- \* After the suction cup has released pressure and is in a non-suction status, it will automatically power off after 5 minutes without requiring any manual operation.

### 5. Power Indicator

- \* When the lithium battery has power, the suction cup will use the lithium battery first. When the lithium battery runs out, it will not automatically switch to AAA battery. You will need to double-click the power button to switch the device to AAA battery power supply; if there is no AAA battery in the spare compartment, please replace the AAA battery first and then double-click to reset.
- \* When the lithium battery is fully charged, the white lithium battery indicator light will show all 5 bars. As the battery is used, the bars will gradually decrease from 5 to 1.
- \* When the lithium battery is low, the last white light will change from white to red, reminding the user to recharge the suction cup or check if AAA batteries are installed in the backup battery compartment.
- \* If the lithium battery indicator bar turns red but the user continues to use the device, the suction cup will display a yellow indicator light while the red indicator bar will disappear. At this time, the lithium battery is drained, and you will need to replace the 3 "AAA" batteries, or charge it with a Type-C charging cable.
- \* When the suction cup continues to use AAA battery power, the yellow indicator light will stay on. When the AAA battery power is low, the yellow light will flash, indicating that the AAA batteries need to be replaced. Please replace 3 "AAA" batteries immediately, then double-click the button to reset to use. Or stop using the suction cup and recharge it with a Type-C charging cable.

### 6. Battery Charging

- \* After the lithium battery is drained, remove the dust cover from the charging port on the side of the suction cup display, rotate it 180 degrees, and insert the Type-C charging cable with the power adapter into the charging port of the suction cup to begin charging.



## OPERATING INSTRUCTIONS

- \* The Type-C charging cable needs to have a power output of 5W 3A or higher. It is compatible with any Type-C compatible phone charger and charging cable.
- \* During charging, the lithium battery indicator bar on the display will repeatedly increase from 1 indicator bar to 5 bars. Once charging is completed, the screen will turn off. After unplugging the charging cable, the display will show 5 battery indicator bars to inform you of the battery level. Then the screen will turn off and the suction cup will automatically shut down in 30 seconds.

### Note:

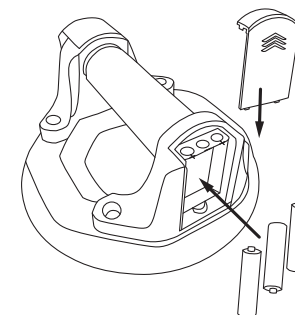
- \* The suction cup is in the powered-off status during charging and cannot perform suction tasks. Therefore, please do not attempt to use the suction cup while charging.
- \* After charging is completed and the charging cable is unplugged, the suction cup will automatically turn off in 30s. The charging time is about 3-4 hours. For safety reasons, please do not overcharge or leave the suction cup connected to the charger for a long time.
- \* Whether charging in shutdown/power on status, the display will only show the Li-battery indicator bar from 1 bar to 5 bars repeatedly. Once charging is completed, the screen will turn off. After unplugging the charging cable, the display will show 5 battery indicator bars to inform you of the battery level. Then the screen will turn off and the suction cup will automatically shut down in 30 seconds.
- \* When charging in working status, the suction cup will stop working. However, the vacuum force will not be released. The display will only show the Li-battery indicator bar from 1 bar to 5 bars repeatedly. Once charging is completed, the screen will turn off. After unplugging the charging cable, the display will show 5 battery indicator bars to inform you of the battery level. Then the screen will turn off and the suction cup will automatically shut down in 30 seconds. Restart the device and it will return to its original working status.
- \* Contains rechargeable Li-ion battery and AAA battery. Batteries must be regulated or disposed of properly. Do not ingest battery. Keep away from children.

### 7. Replace the AAA batteries

When the lithium battery is low, double-click the power button to switch to AAA battery power. Please ensure that 3 "AAA" batteries are correctly installed following the polarity markings in the backup battery compartment or charge the suction cup.

### Note:

- \* If both the lithium battery and AAA battery are drained, suction cup will shut down. Installing new AAA batteries may cause the suction cup to make a sound, but the suction cup actually do not work. To make it work again, please charge the lithium batter.



CARE AND MAINTENANCE

- Suction cup should always be stored with the protective cover when not in use.
- Store in a dry and clean environment inside of plastic carrying case.
- Remove any dirt or dust from the surface of the machine after use.
- To clean the rubber pad surface, first remove the air filter, and reinstall it after cleaning is complete.
- During frequent use it is recommended to recharge the battery daily.
- If the suction cup is not used for a long period, please regularly charge it to ensure the battery's lifespan does not reduce due to long-term disuse. It is recommended to charge it once a month.
- If the suction cup is not used for an extended period, please remove the AAA batteries from the backup battery compartment to prevent leakage and ensure the backup battery compartment remains functional.
- Check the screws are well fixed, loose screws may cause injury.
- Do not dispose of electrical appliances in the household waste. Follow the local provisions for the disposal of electrical or battery products.

TROUBLESHOOTING

PROBLEM	POSSIBLE CAUSE	CORRECTIVE ACTION
Slow leakage	Contaminated rubber pad face	Clean suction pad surface
	Contaminated object's surface	Use only on flat, smooth, non-porous, non-cracked surfaces
Not working	Li-ion battery out of power	1. Install AAA battery, double click to switch to AAA battery 2. Charge Li-ion battery
	AAA battery out of power	Change AAA battery / Charge Li-ion battery
Screen can not be turned on	Li-ion battery out of power	Charge Li-ion battery

WARRANTY

3-YEAR LIMITED GUARANTEE: You should never have a problem with your Kobalt product. However, this product is warranted to be free from defects in material and workmanship for a period of 3 years from the date of purchase. Instances of normal wear and tear, damage caused by abuse, misuse, alteration, or failure to follow instructions or proper maintenance protocols are not covered.

**Note:** This equipment has been tested and found to comply with the limits for a Class B digital device, pursuant to part 15 of the FCC Rules. These limits are designed to provide reasonable protection against harmful interference in a residential installation. This equipment generates, uses and can radiate radio frequency energy and, if not installed and used in accordance with the instructions, may cause harmful interference to radio communications. However, there is no guarantee that interference will not occur in a particular installation. If this equipment does cause harmful interference to radio or television reception, which can be determined by turning the equipment off and on, the user is encouraged to try to correct the interference by one or more of the following measures:

- Reorient or relocate the receiving antenna.
- Increase the separation between the equipment and receiver.
- Connect the equipment into an outlet on a circuit different from that to which the receiver is connected.
- Consult the dealer or an experienced radio/TV technician for help.

This device complies with Part 15 of the FCC Rules. Operation is subject to the following two conditions: (1) this device may not cause harmful interference, and (2) this device must accept any interference received, including interference that may cause undesired operation.