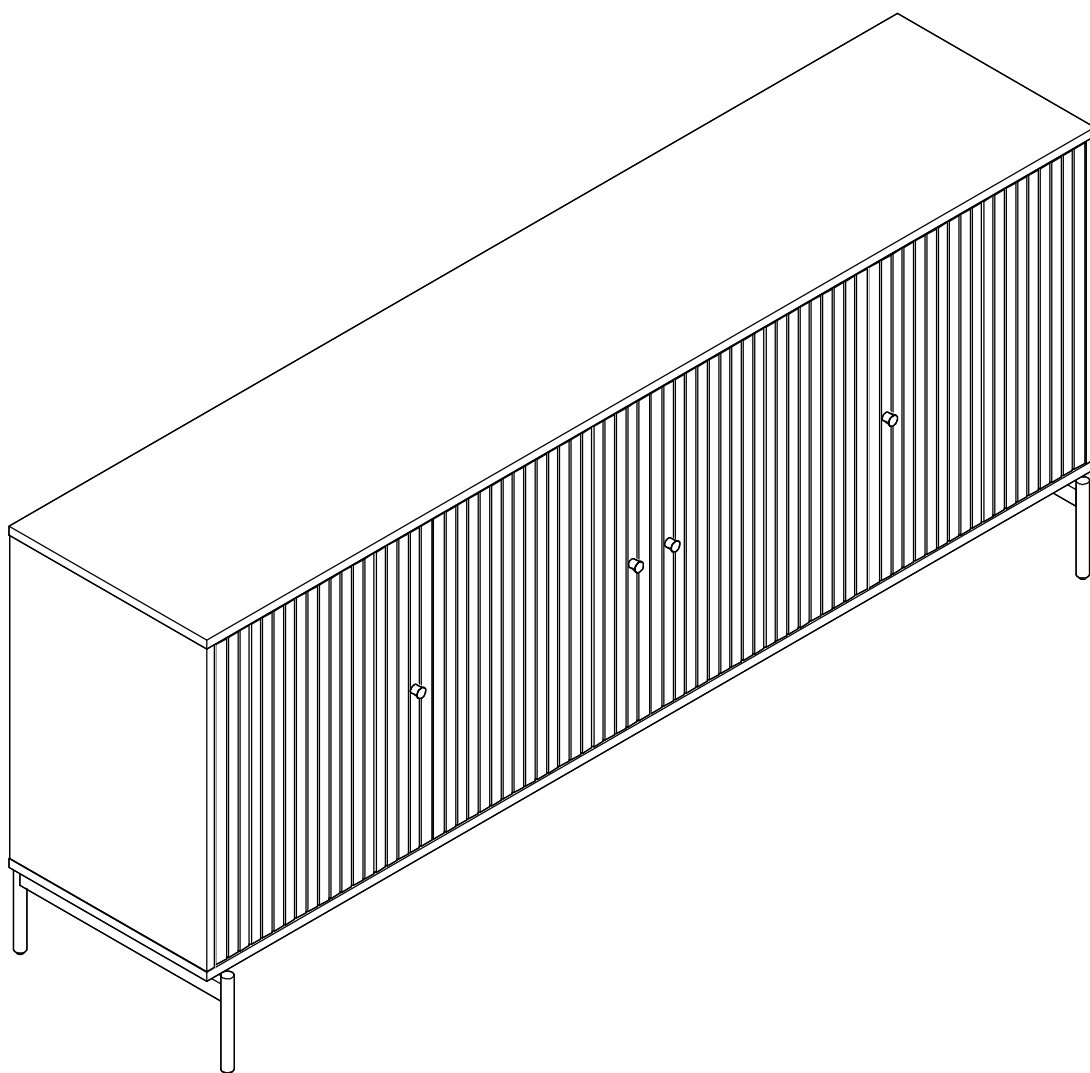


**SB004**



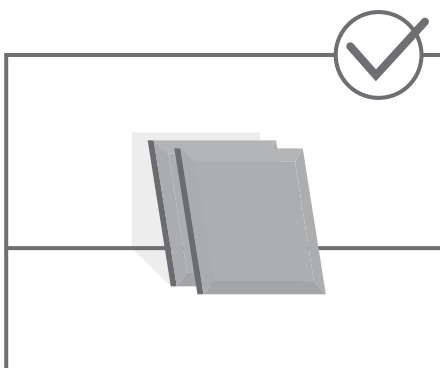
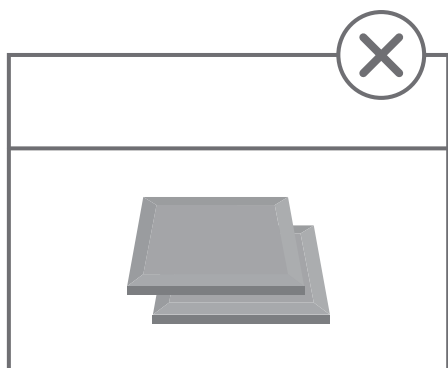
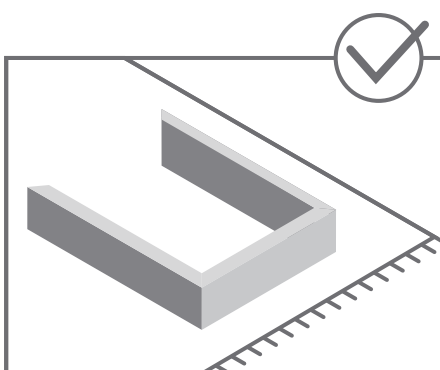
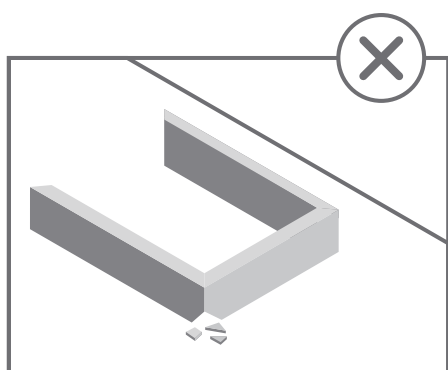


# STOP!

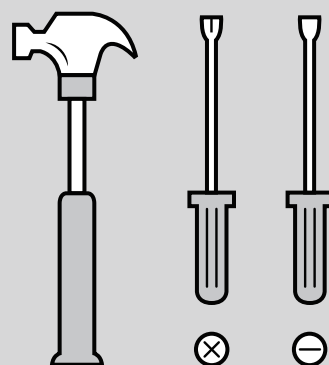
Before beginning the assembly process,  
ensure all boxes and parts have been delivered.

## FOR BEST RESULTS:

- Do not throw away packaging materials until assembly is complete.
- Assemble item on a soft surface, such as cardboard or carpet, to protect finish.
- Proper assembly requires two people.



## TOOLS REQUIRED



View our assembly video online:  
[WWW.MANHATTANCOMFORT.COM](http://WWW.MANHATTANCOMFORT.COM)



Stuck? Question? We are here to help.  
tel: 908-888-0818  
e-mail: [help@manhattancomfort.com](mailto:help@manhattancomfort.com)

Support Site



# Included in this package:

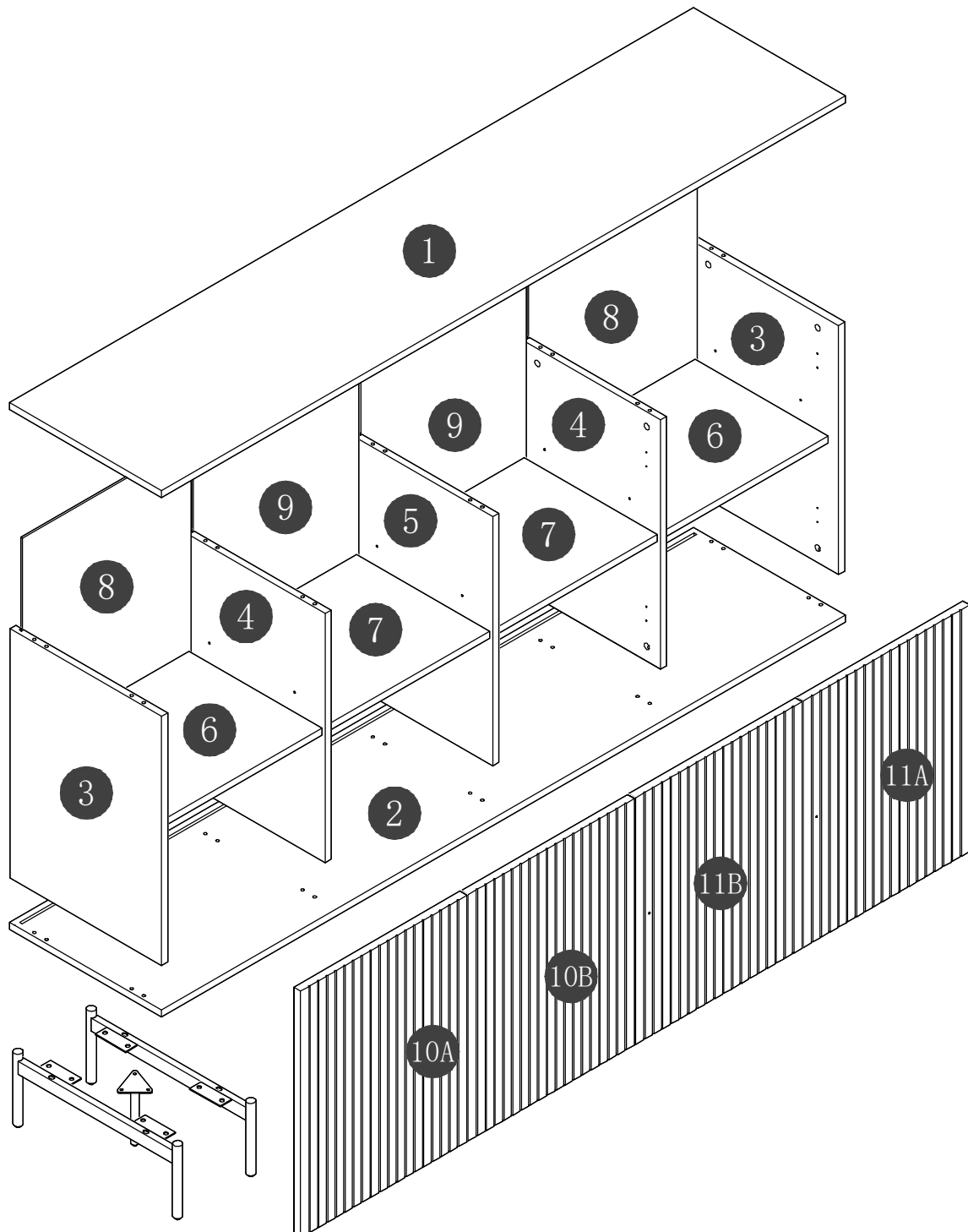
## BOX 01/02

- 1:TOP(1)
- 2:BOTTOM(1)
- 3:LEFT END&RIGHT END(1+1)
- 4:LEFT UPRIGHT&RIGHT UPRIGHT(1+1)
- 5:MIDDLE UPRIGHT(1)
- 7:MIDDLE ADJUSTABLE SHELVES(1)

## BOX 02/02

- 6:LEFT&RIGHT ADJUSTABLE SHELVES(1+1)
- 7:MIDDLE ADJUSTABLE SHELVES(1)
- 8:LEFT&RIGHT BACK(1+1)
- 9:MIDDLE BACK(2)
- 10A:LEFTMOST DOOR(1)
- 10B:LEFT DOOR(1)
- 11A:RIGHTMOST DOOR(1)
- 11B:RIGHT DOOR(1)

HARDWARE ARE IN BOX 02/02

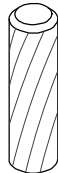


# Hardware Identification

A:BOLT-20pcs  
M6\*40mm



B:WOODDOWEL-20pcs  
ø8\*30mm



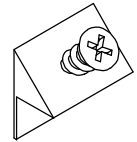
C:GROMMET-20pcs  
ø15\*12mm



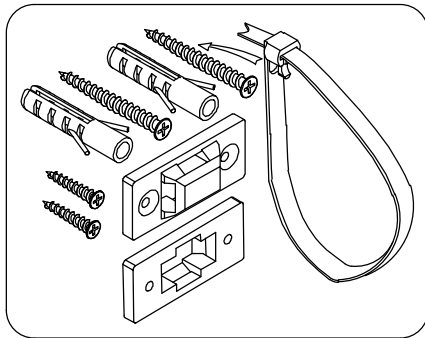
D:PVC STICKER-20pcs  
ø21mm



E:BOLT-16pcs



F:BOLT-1sets



H:SPANNER-1pcs  
M4



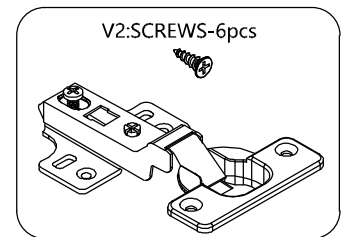
G1:SCREW-11pcs  
M6\*16mm



G2:SCREW-4pcs  
M6\*45mm

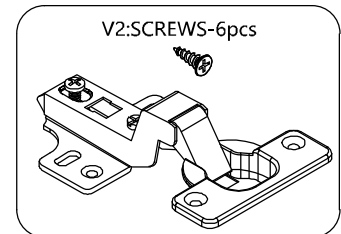


I2:HINGE-4pcs



V2:SCREWS-6pcs

I3:HINGE-4pcs

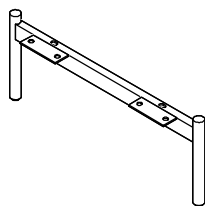


V2:SCREWS-6pcs

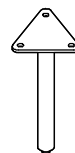
L:BOLT-16pcs



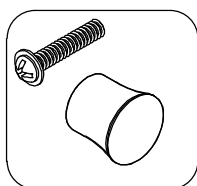
J-1:LEG-2pcs



J-2:LEG-1pcs



U:BOLT-4pair



Z1:WASHER-15pcs

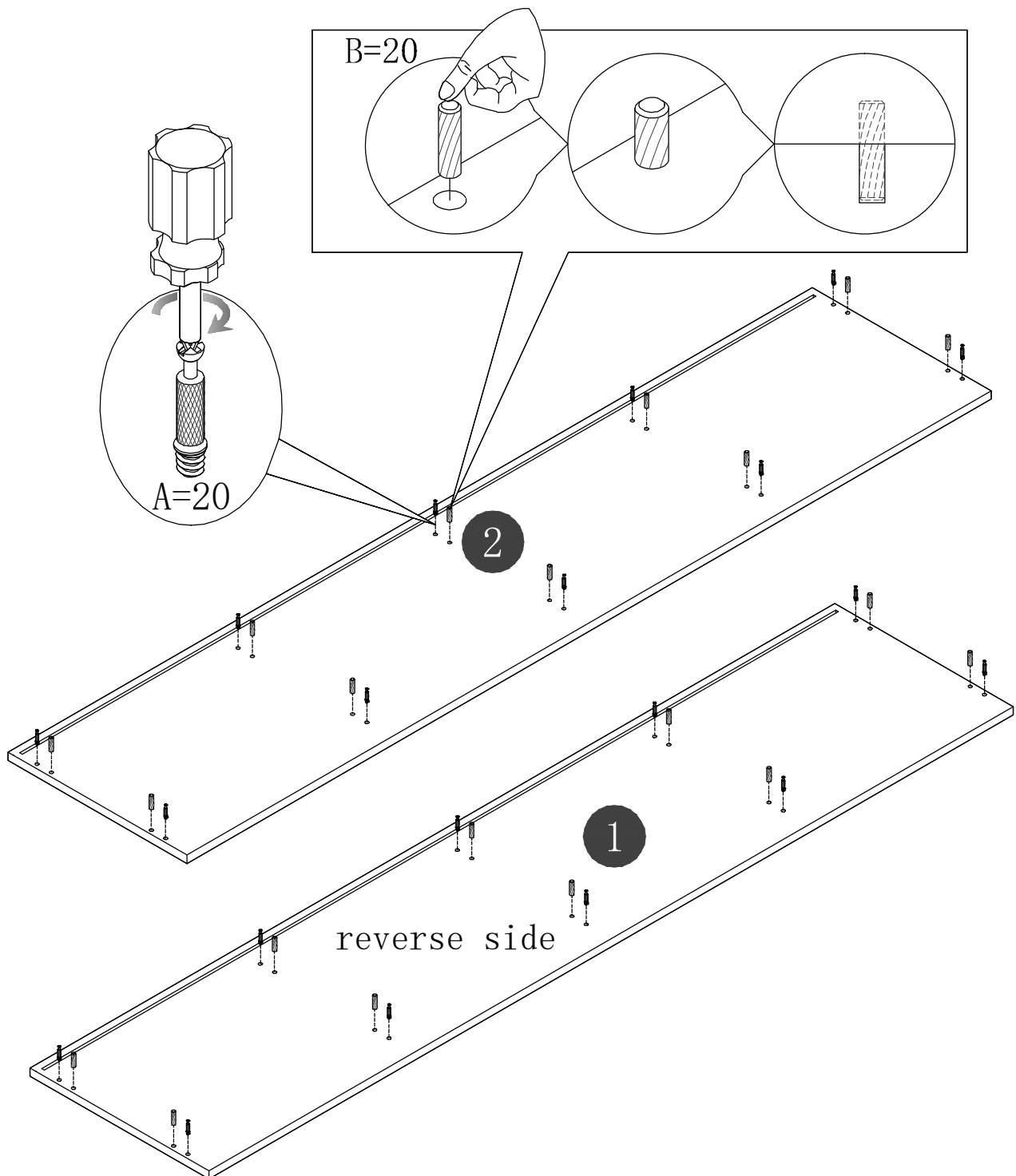


Z2:WASHER-15pcs



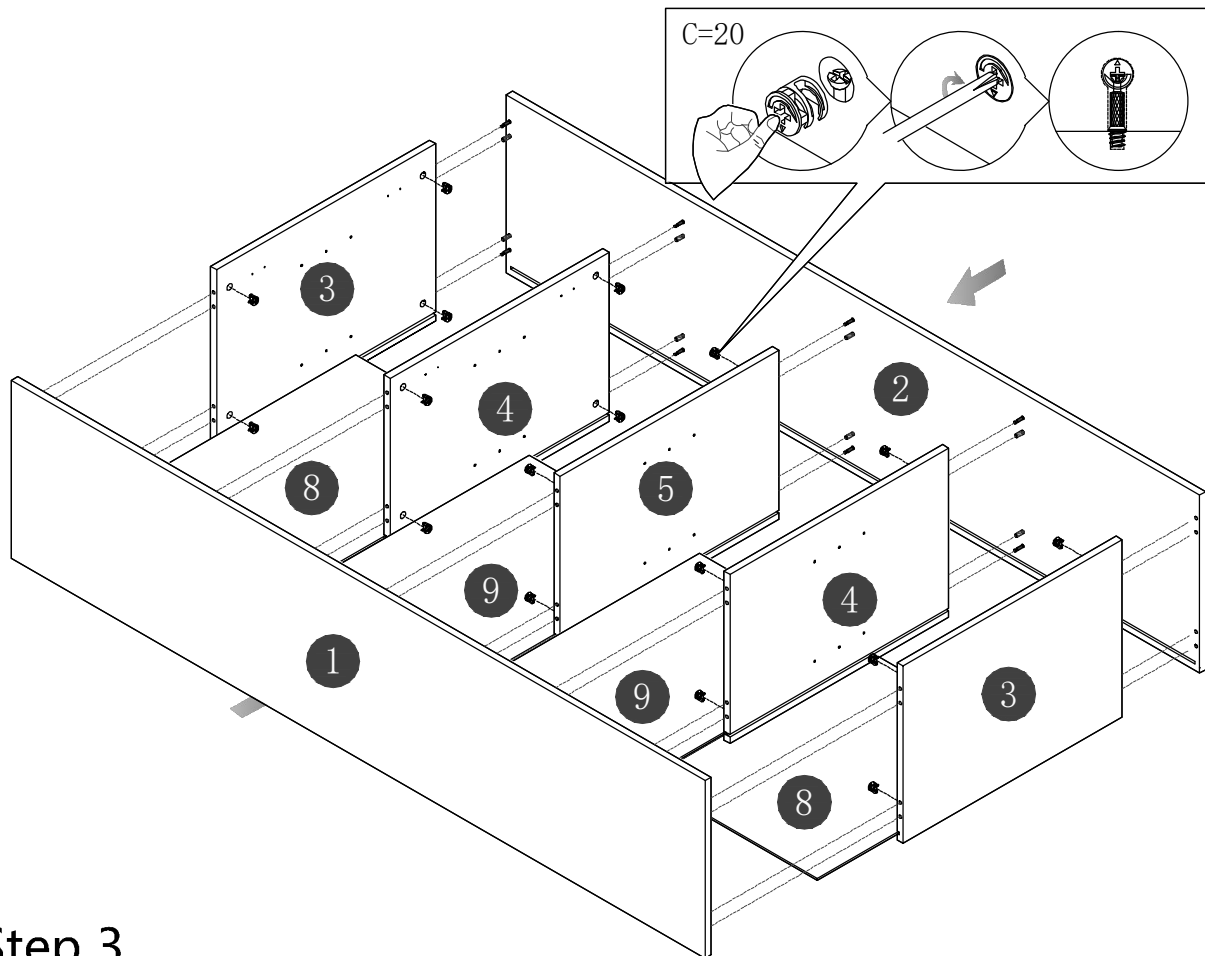
# Step 1

---



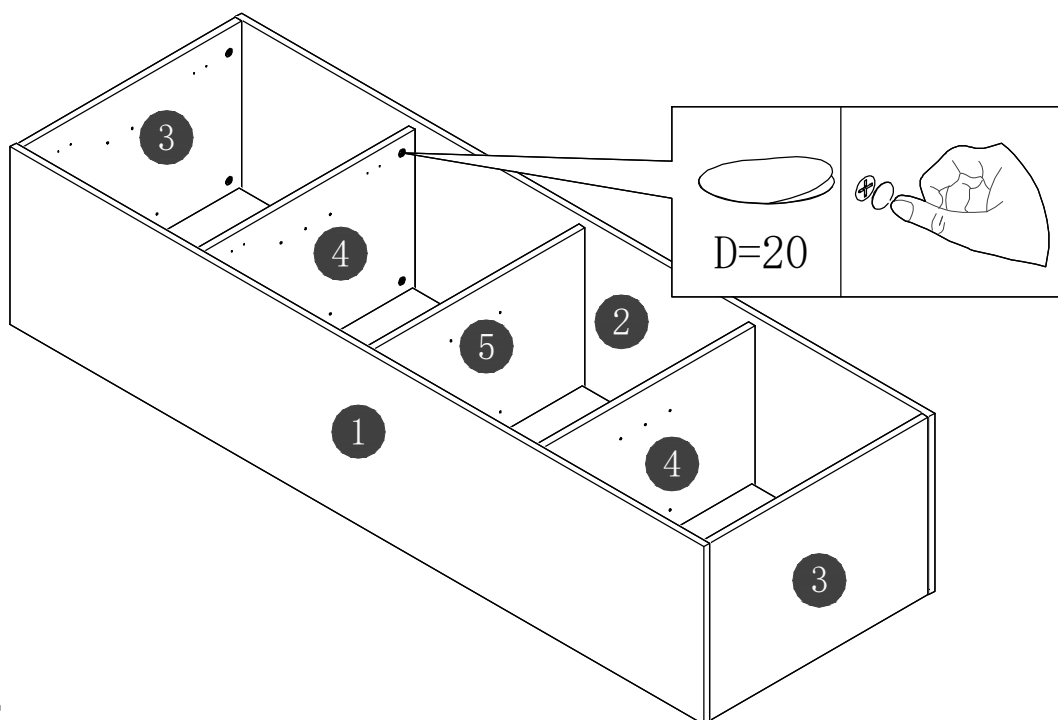
## Step 2

---

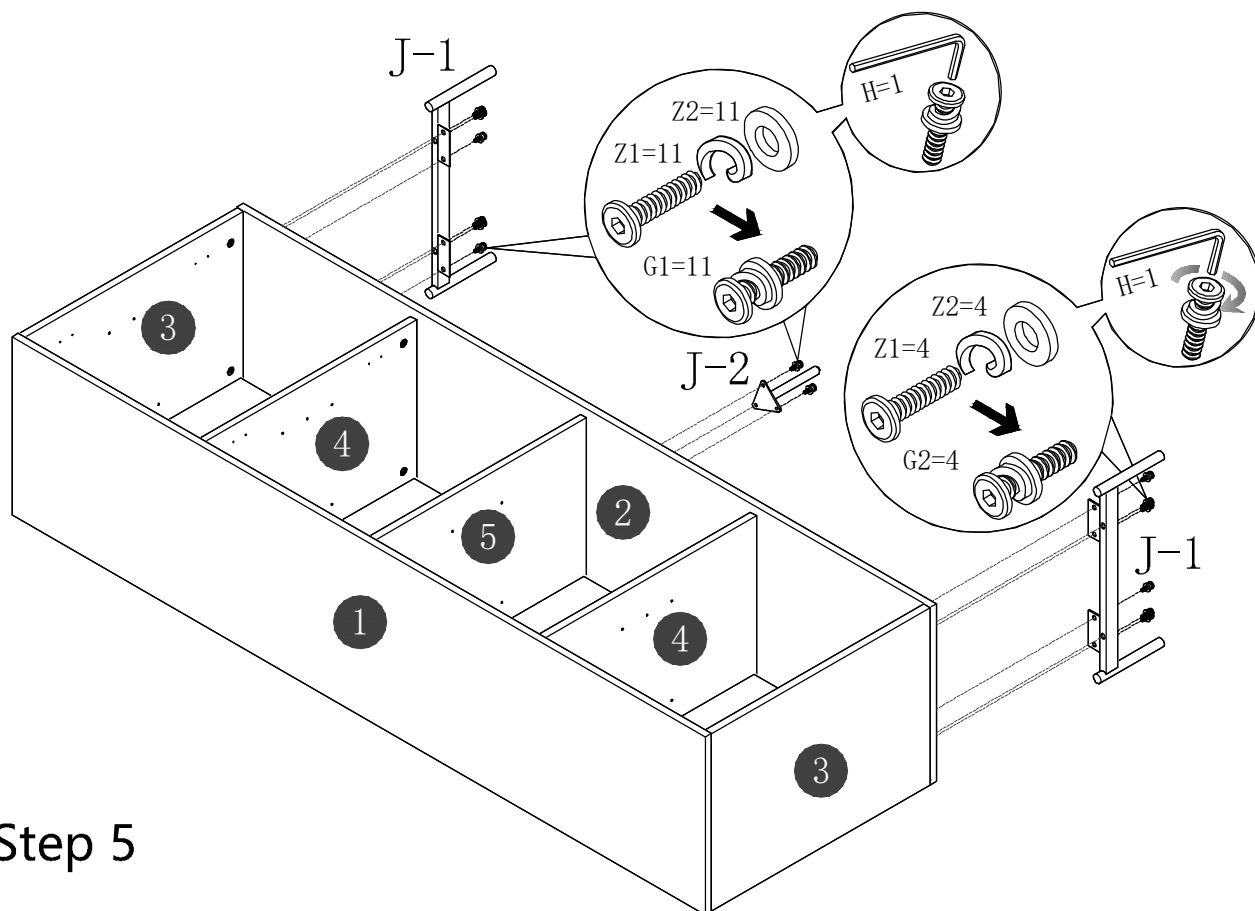


## Step 3

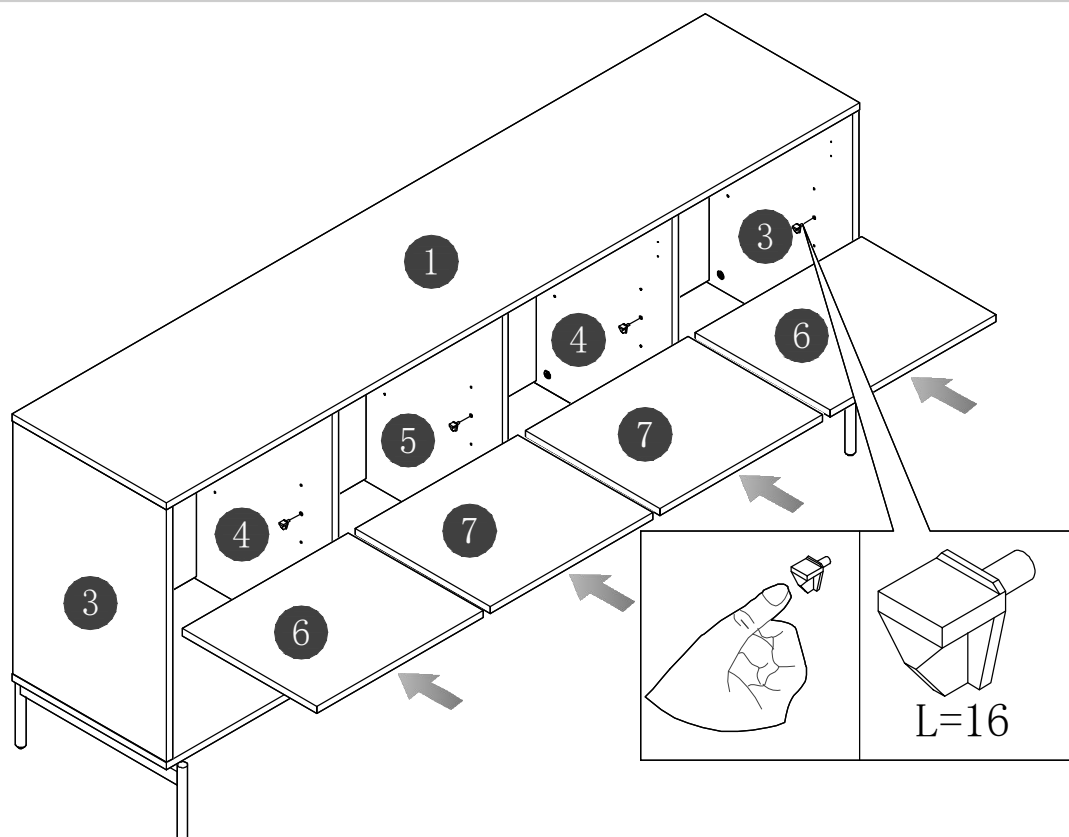
---



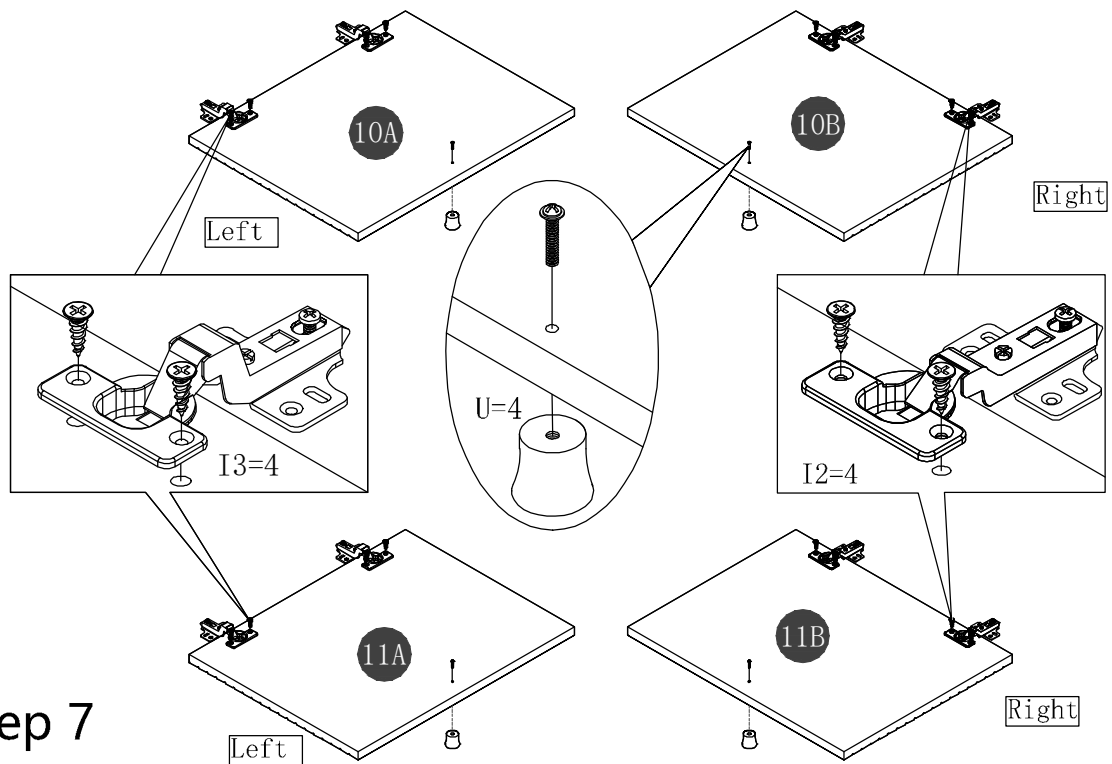
## Step 4



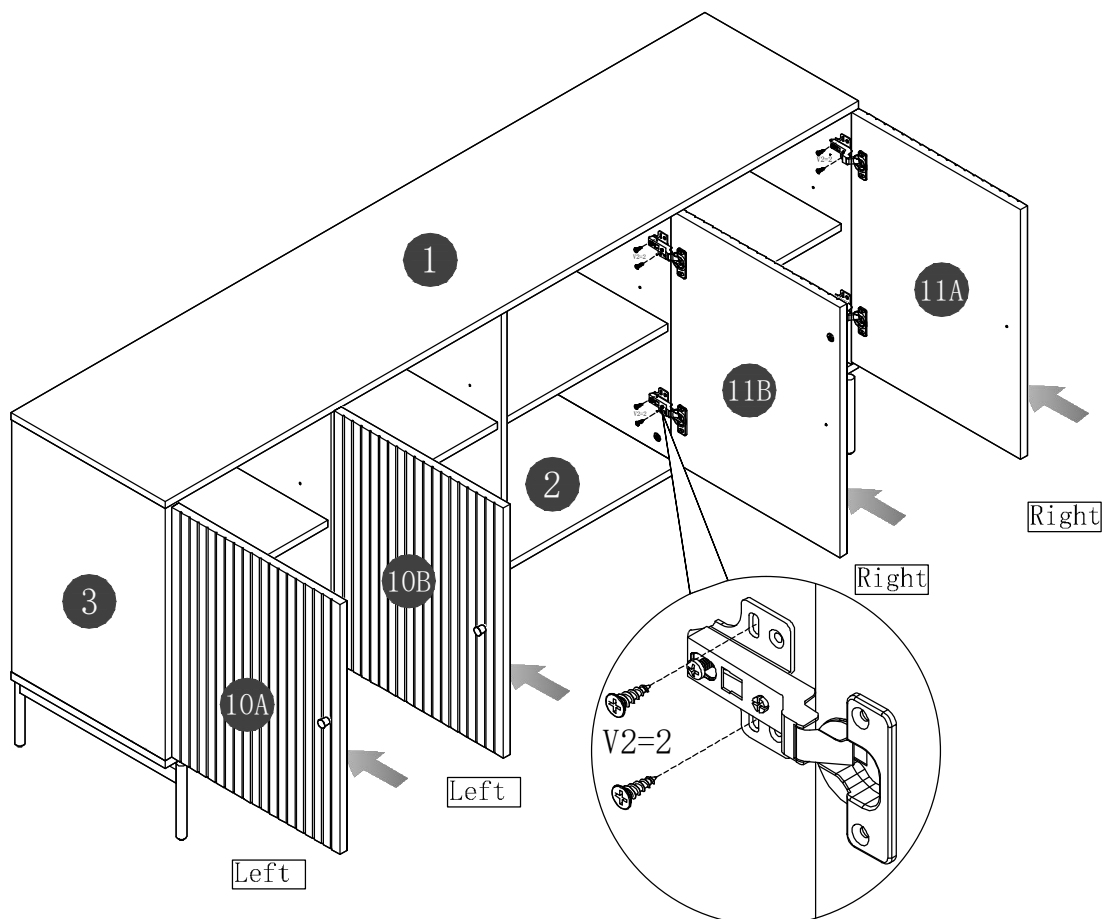
## Step 5



## Step 6

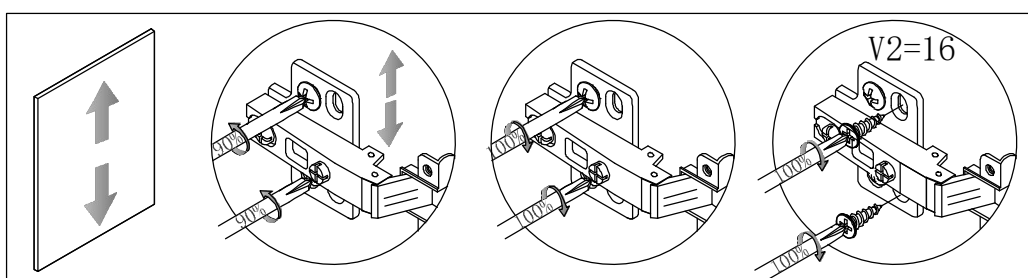
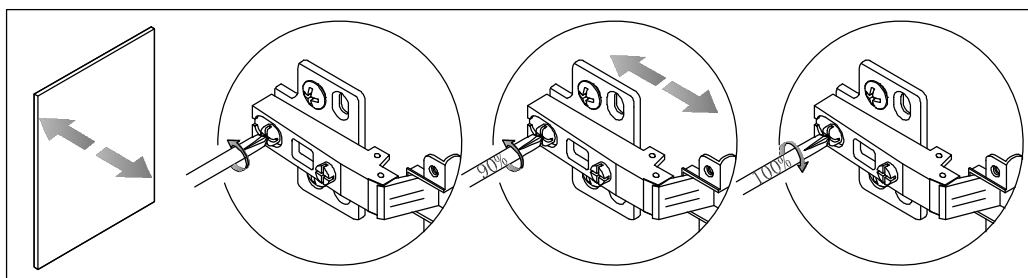
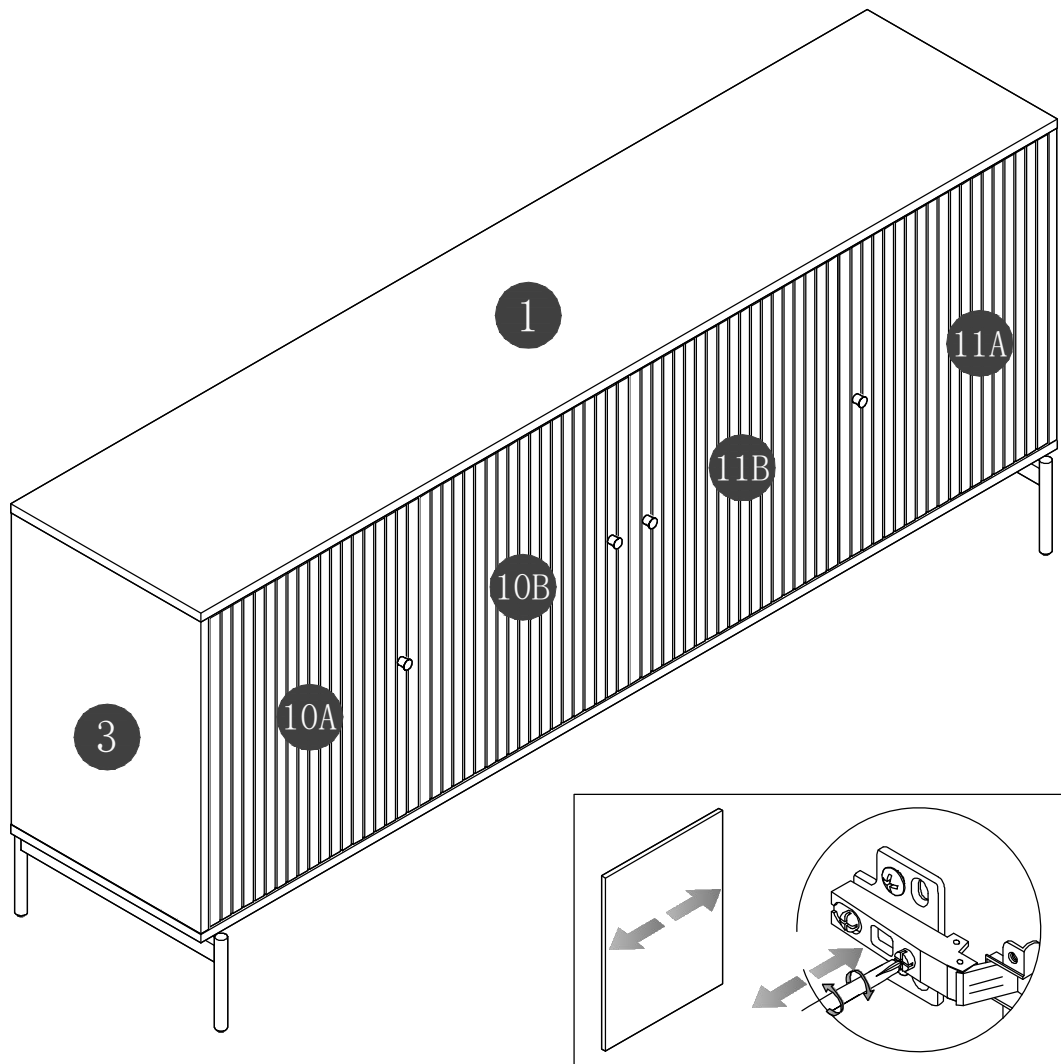


## Step 7



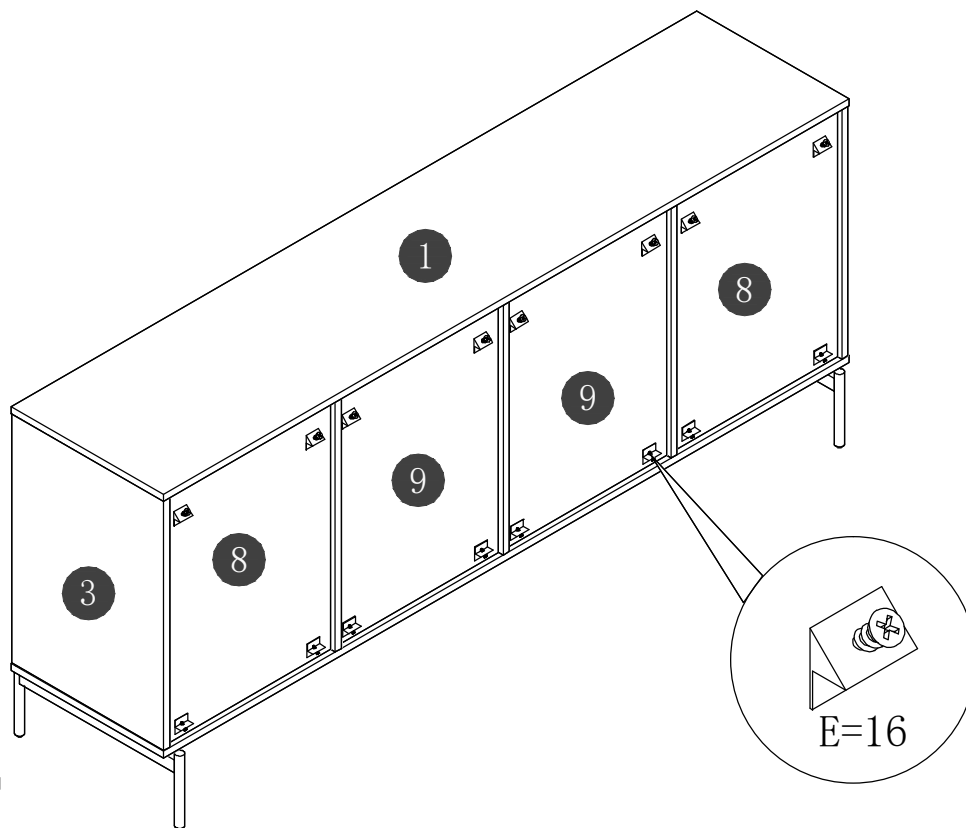
## Step 8

---



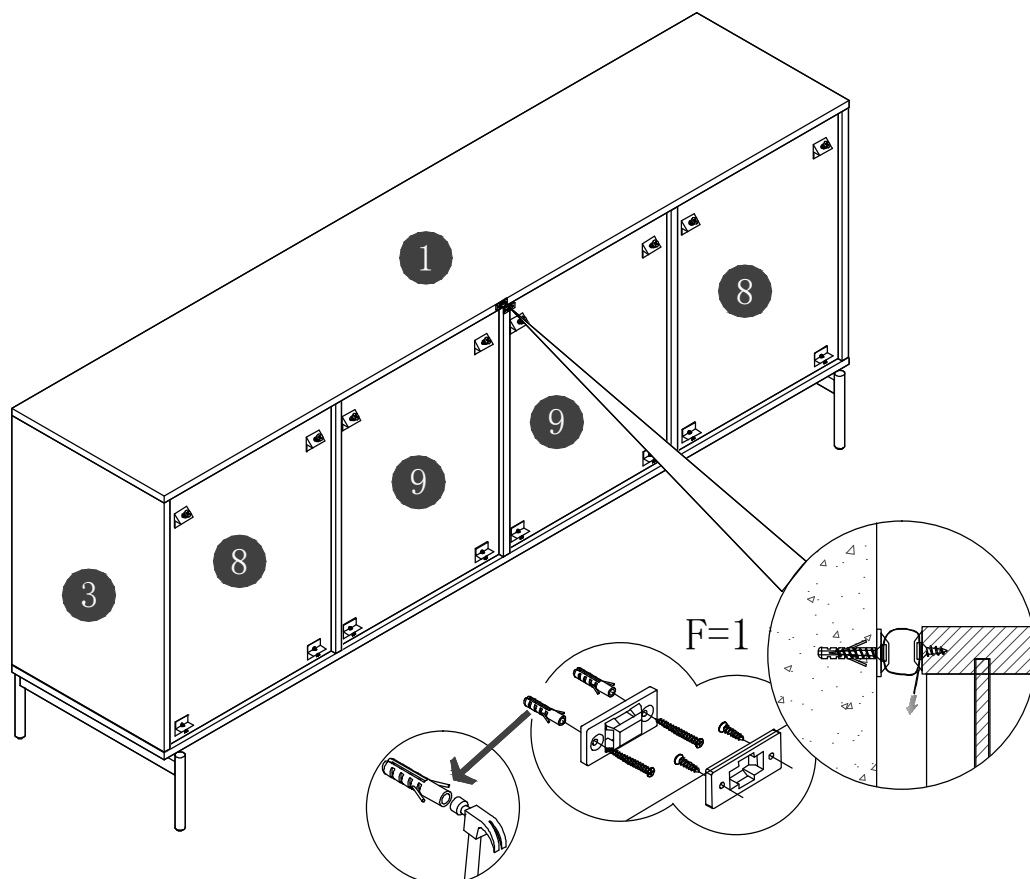
## Step 9

---



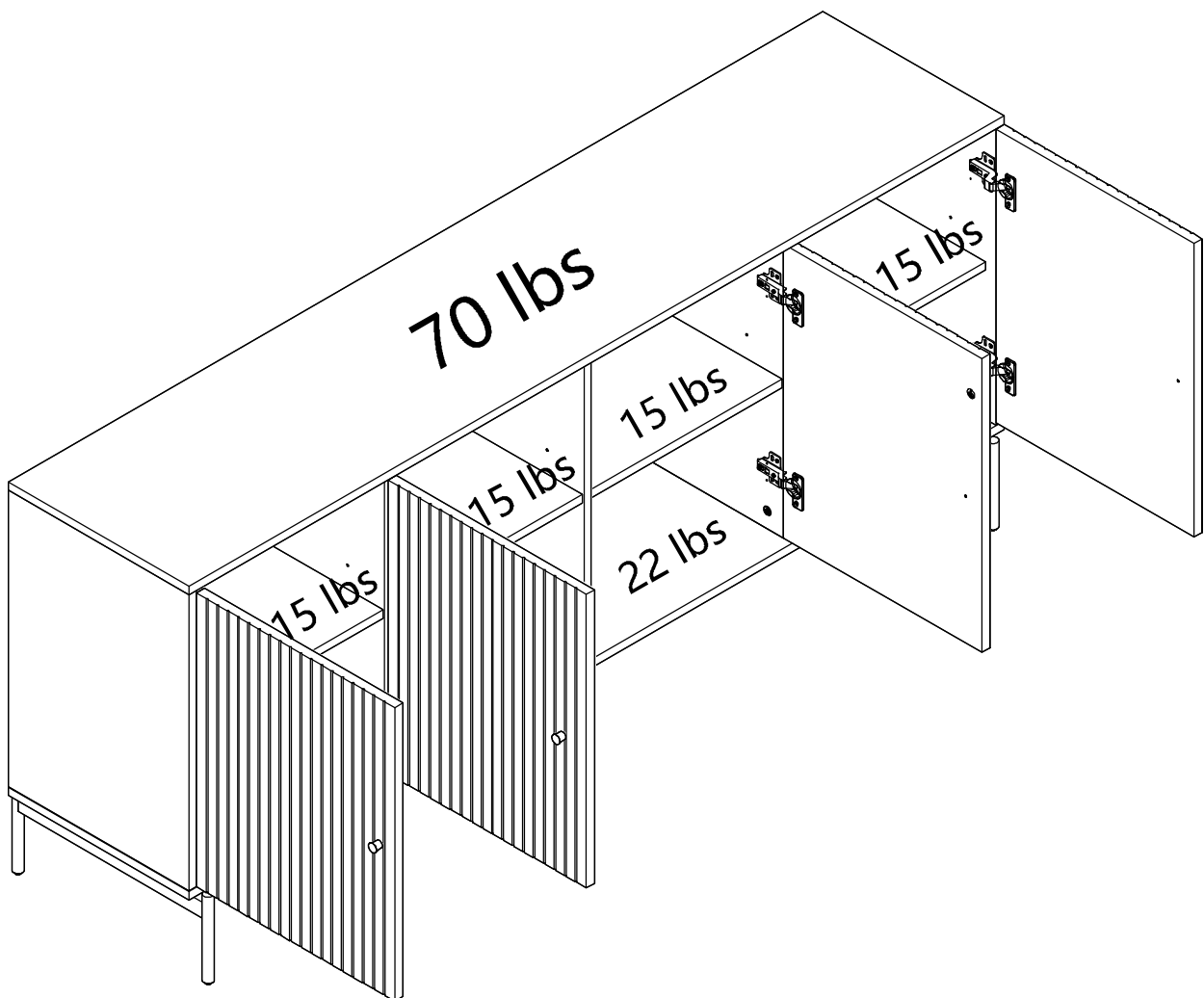
## Step 10

---



## Step 11

---





---

## WARRANTY POLICY

All Manhattan Comfort furniture products are warranted, to the original purchaser at the time of purchase and for a period of 30 days thereafter.

Our warranty is limited to new products purchased in factory sealed cartons. This warranty is valid in the United States of America and Canada.

In order to provide you with timely assistance, please thoroughly inspect your furniture for missing or defective parts immediately after opening the carton.

Manhattan Comfort offers a 30-day parts replacement warranty on all items.

Our furniture products are not intended for outdoor use.

### THE WARRANTY DOES NOT COVER:

- Defects/damages by improper assembly or disassembly.
- Defects/damages caused by inappropriate use of the furniture.



319 Ridge Rd. Dayton, NJ 08810

908-888-0818