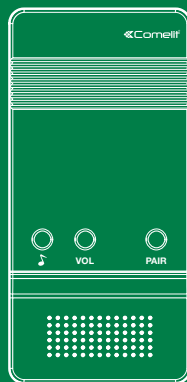
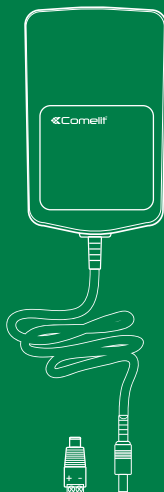
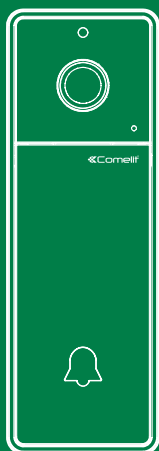


# VISTO

ENJOY THE SMART LIFE



VISTO/C KIT

 **Comelit®**  
Passion. Technology. Design.

# Table of contents

**Warnings ..... 3**

**Visto/C Kit ..... 4**

**Visto ..... 5**

    Description .....5

    Technical characteristics.....6

**Installation..... 7**

    Warning .....7

    Wall mounting.....7

**LED guide..... 8**

**Art. 3532 ..... 9**

    Description .....9

**Art. 3534 ..... 11**

    Description .....11

**Power supply ..... 11**

    Maximum connection distance.....11

**Wiring diagrams..... 12**

    Variant for electric lock connection .....12

**Installing the COMELIT VISTO app ..... 13**

## Warnings

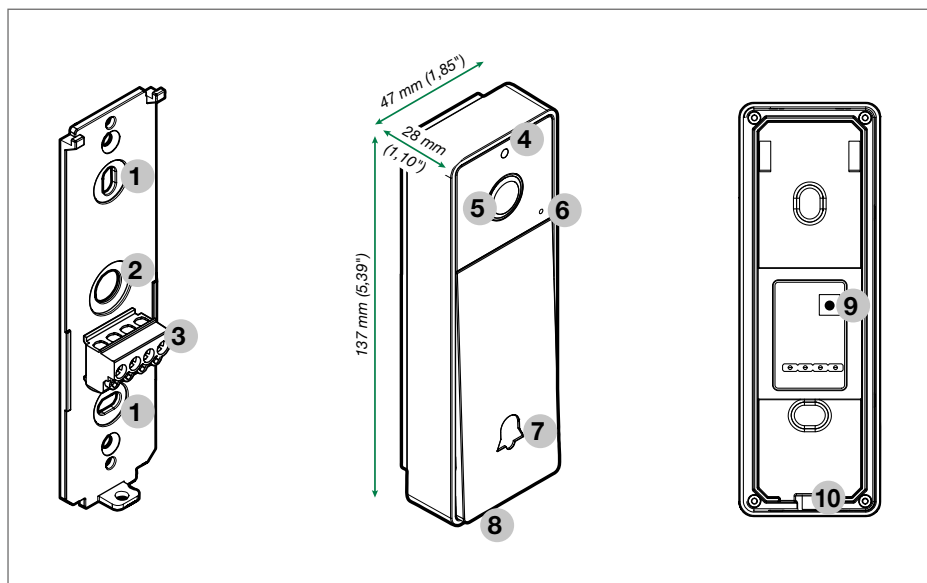
- This Comelit product was designed for use in the creation of audio and video communication systems in residential, commercial or industrial settings and in public buildings or buildings used by the public.
- Disconnect the power supply before carrying out any operations on the wiring. Use wires with a cross-section suited to the distances involved, observing the instructions provided in the system manual.
- We advise against running the system wires through the same duct as the power cables (110V or 230V or higher).
- To ensure Comelit products are used safely:
  1. carefully observe the indications provided in the manuals
  2. make sure the system created using Comelit products has not been tampered with / damaged.
- Comelit products do not require maintenance aside from routine cleaning, which should be carried out in accordance with the indications provided in the manuals / instruction sheets.
- Comelit Group S.p.A. does not assume any responsibility for
  1. any usage other than the intended use
  2. non-observance of the indications and warnings contained in this manual / instruction sheet.
- Comelit Group S.p.A. nonetheless reserves the right to change the information provided in this manual / instruction sheet at any time and without prior notice
- The brands and commercial names appearing in this publication remain the property of their respective owners.
- Visto supports 433.92 MHZ radio frequency signal, which can transmit the signal and can remotely control any products that can receive the same frequency.
- The Wi-Fi and 433.92 MHZ radio frequency signal on VISTO are two independent signals and works independently.
- This device complies with Industry Canada licence-exempt RSS standard(s). Operation is subject to the following two conditions: (1) this device may not cause interference, and (2) this device must accept any interference, including interference that may cause undesired operation of the device.
- This device must be installed to provide a separation distance of at least 20 cm from all persons, and must not be collocated or operating in conjunction with any other antenna or transmitter.
- The Comelit Visto application is available on App Store and Google Play and is supported by devices with iOS 8.0 (or later) and by the most common Android devices with Android version 4.4 or higher, however some functionalities may be limited depending on the model and the version.

## Visto/C Kit

With VISTO/C Kit you can control your video entry system both locally and remotely. With the Comelit Visto app, available on App Store and Google Play, you can answer calls from an external unit, view images from the camera on the external unit, images from additional remote cameras and operate the locks of doors and gates. In addition, thanks to the integral *motion detector* function, you can receive on your smartphone notification of any movement/presence detected around your front door.

# Visto

## Description



1. Surface mount by means of screws
2. Cable inlet hole
3. Connection terminal
  - + - Visto Power supply
  - NO** Normally open relay contact
  - COM** Common relay contact
4. Brightness sensor
5. Wide-angle color camera
6. Microphone
7. Call button / Indicator LED
8. Loudspeaker
9. Reset (To restore factory settings)
10. Mounting screw

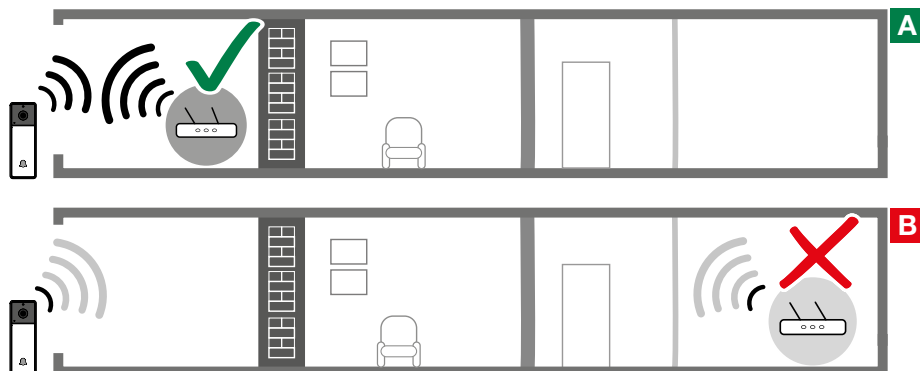
## Technical characteristics

MAIN SPECIFICATIONS	
Type	Monoblock entrance panel
Type of finish	Plastic
Audio/video system	✓
Wall-mounted	✓
Camera	Colors
Diagonal viewing angle (°)	170
Video encoding	H.264
Type of sensor	1/4" CMOS
Minimum colour illumination (lux)	2
Minimum B/W illumination (lux - led IR ON)	0
Lens size (mm)	1,6
Signaling LED	✓
Buttons to call	✓
Total buttons	1
Operating temperature (°K)	248.15 - 328.15
RH max operating humidity (%)	0 - 75
IP protection rating	IP54
SOFTWARE/FIRMWARE SPECIFICATIONS	
Video analytics	Motion Detection
Remote control by mobile	App Comelit Visto (Android, iOS)
Push notification	✓
Video resolution (H x V)	SD (320x192) / HD (1280 x 720)
FUNCTIONS	
Key button function	✓
HARDWARE SPECIFICATIONS	
Customisable housing	✓
GENERAL DATA	
Product height (inches)	5.35
Product width (inches)	1.85
Product depth (inches)	1,10-1.26
Product colour	Dark graphite RAL9011
AUDIO/VIDEO SPECIFICATIONS	
Video recording:	Cloud
Audio type	Two-way, Full-Duplex, Echo canceler, Noise canceler
ELECTRICAL SPECIFICATIONS	
Power supply	12 - 33 V DC
Max absorption (W)	6

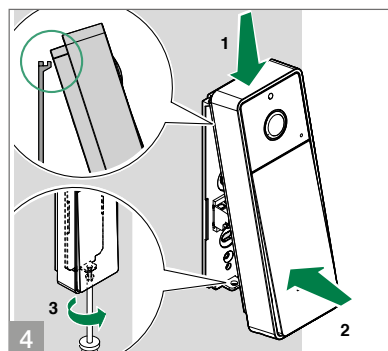
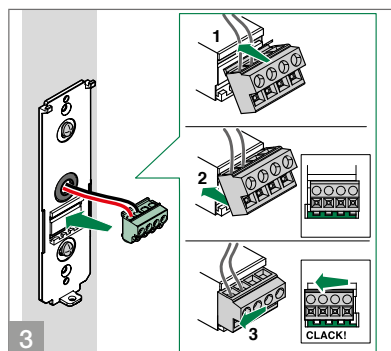
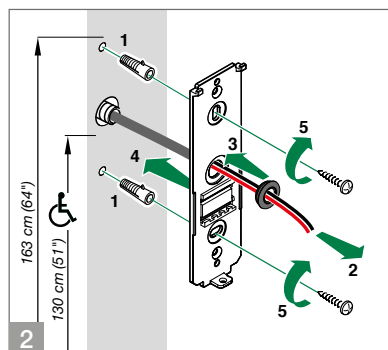
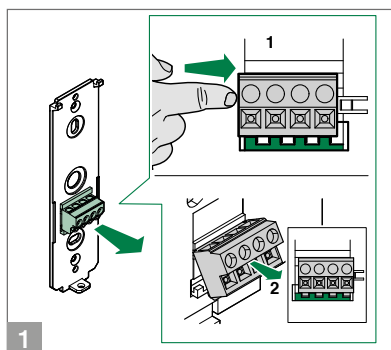
# Installation

## Warning

It is advisable to install VISTO near the Wi-Fi router. Always check the quality of the Wi-Fi signal before final installation of the product. A too low Wi-Fi signal will impair operation of VISTO.



## Wall mounting



# LED guide



Start



Door opening



Wi-Fi search

Wi-Fi not available

Loss of Wi-Fi connection



Connected to Wi-Fi

Not connected to the server



Standby mode



Call in progress



Conversation in progress



Updating in progress

***WARNING: this update can take up to 10 minutes, DO NOT remove the power during this process.***

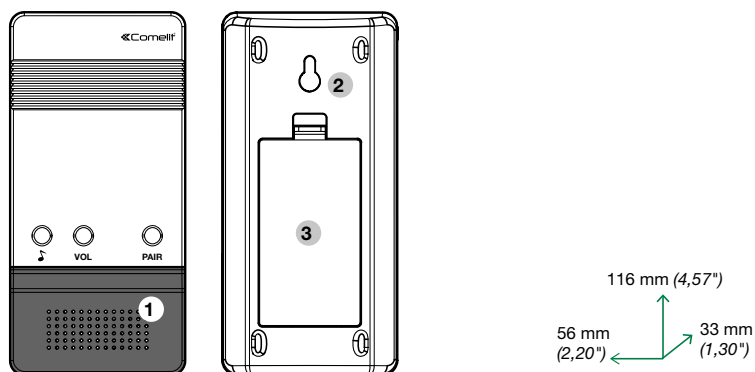


Access Point mode



## Art. 3532

### Description



Melody selection

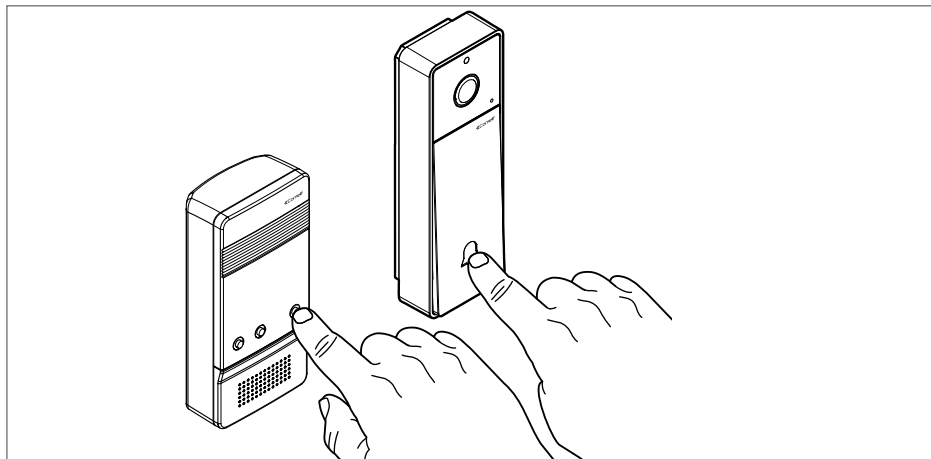
**VOL** Volume adjustment

**PAIR** Devices association

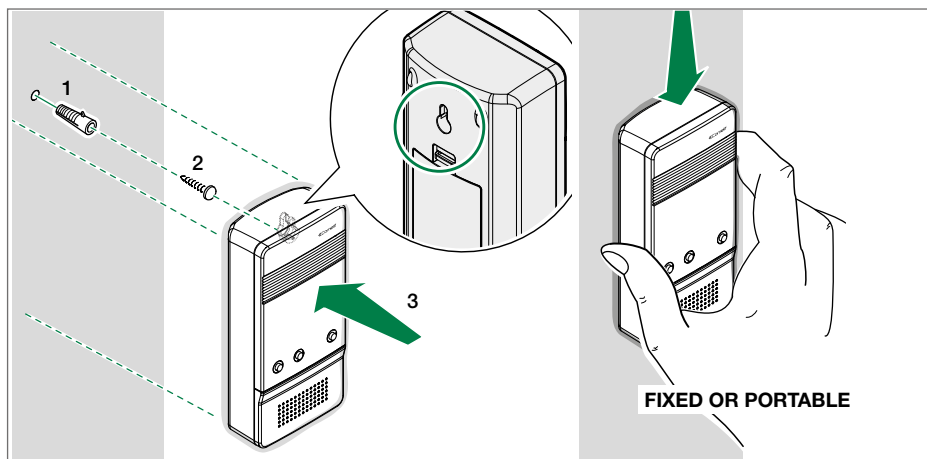
1. Loudspeaker
2. Possibility of wall fixing
3. Battery housing AA 1,5V (Not included)



Art. 3532 supports 433.92 MHz radio frequency signal



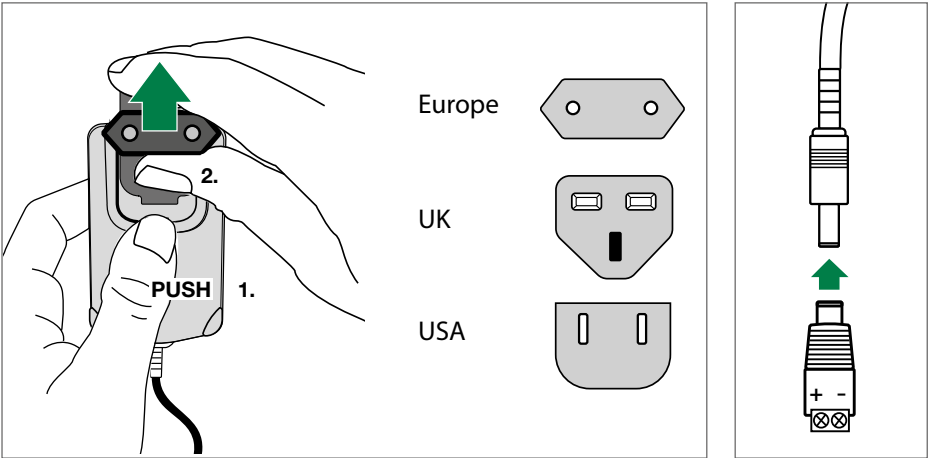
Press the call button while pressing and holding the PAIR button on Visto doorbell. Pairing is confirmed by the ringtone.



# Art. 3534


## Description

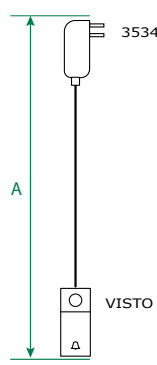



Power supply unit	
Input voltage	100-240V AC
Output voltage	24 V DC
Max. current delivered	0,4A



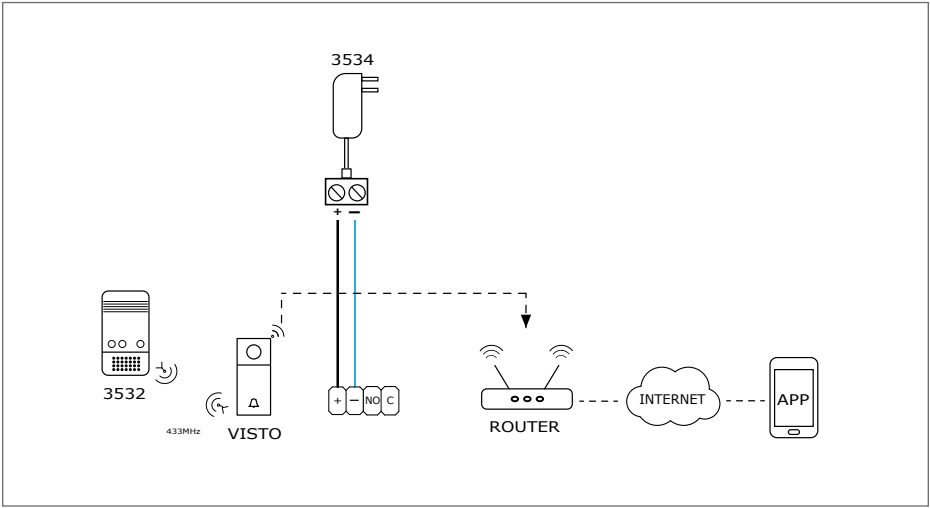
## Power supply

### Maximum connection distance

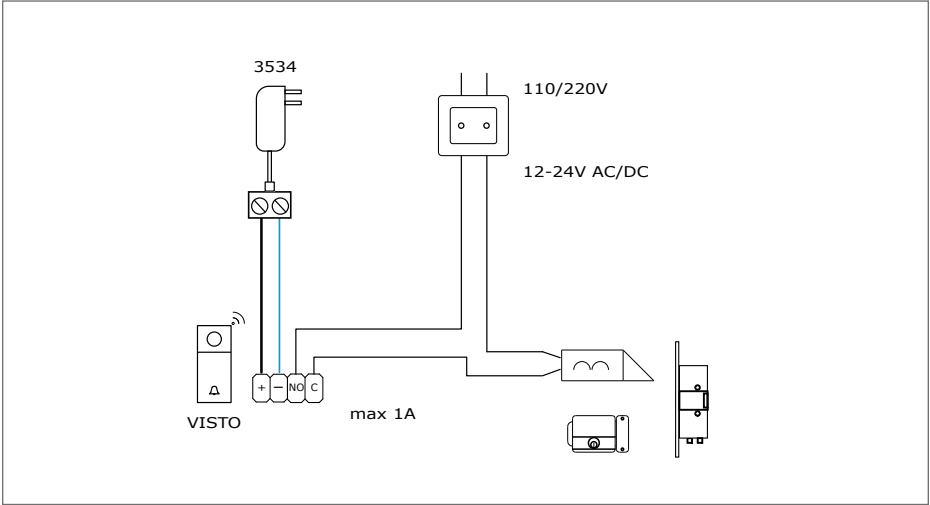
 For Wi-Fi signal see page 6 "Installation warning".

	A max.	
UTP5 cat. 5 0,2 mm <sup>2</sup> (Ø 0,5 mm AWG 24) 	100 m 328 feet	
0,5 mm <sup>2</sup> (Ø 0,8 mm AWG 20) 	200 m 656 feet	
1 mm <sup>2</sup> (Ø 1,2 mm AWG 17) 	240 m 787 feet	

# Wiring diagrams



## Variant for electric lock connection



## Installing the COMELIT VISTO app


After downloading the COMELIT VISTO app from the store onto your smartphone, you can use the app to connect the VISTO to your router via Wi-Fi.

If your router is connected to the internet then your Smartphone will receive a push notification for motion detection notification and can communicate between the VISTO and your smartphone.

These tips will help during the installation of your brand new Visto.




### Getting started with VISTO Wi-Fi Doorbell and app

1. Download the COMELIT VISTO app from Apple App Store or Google Play
2. Open the app and press "SIGN UP"
3. Enter the data requested to create an account
4. Confirm the account from your e-mail
5. From the app, press "LOGIN"
6. Enter your "username" and "password" press "LOGIN"
7. Add a new Visto external unit by clicking  and pressing "CONNECT NEW DEVICE"
8. Follow the instructions of the app wizard to complete setup

---

During the configuration you will be asked to know the DEVICE PASSWORD, use 888888.



The screenshot shows the 'Connect new device' screen of the app. It has a dark background with white text and input fields. At the top, the status bar shows '9:41 AM' and '100%' battery. The screen contains the following elements:

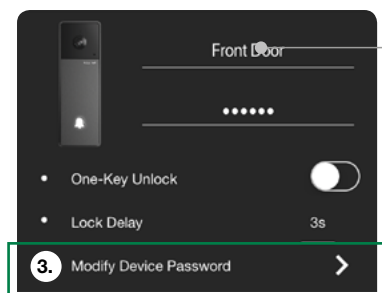
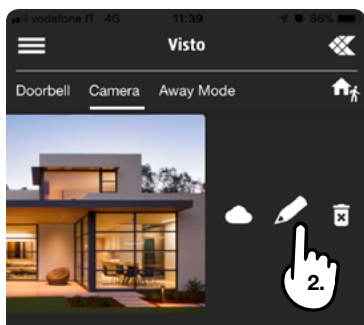
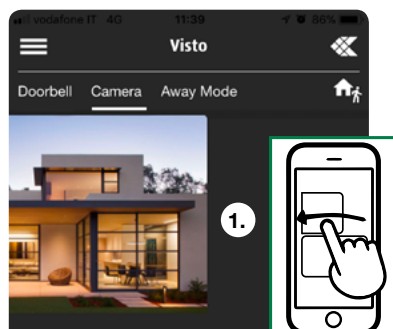
- A back arrow and the title 'Connect new device'.
- A text field with the placeholder 'Please give a name to your device' and a toggle switch.
- A text field containing 'cm02f77db8' with a Wi-Fi icon and a toggle switch.
- A 'Password' field with a green dot indicator.
- An 'Installation Code(optional)' field.
- A 'Device Location(optional)' field.
- A 'CONTINUE' button at the bottom.

Annotations on the right side of the screen point to specific fields:

- 'Device name' points to the first text field.
- 'Device code' points to the second text field.
- '888888' (in green) points to the Password field.
- '(Default)' (in green) is positioned below the password field.

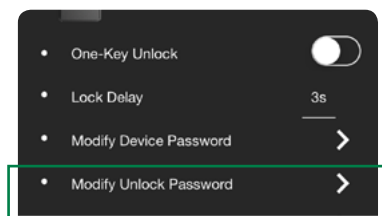
A hand icon is shown pointing at the 'CONTINUE' button.

 We recommend to change the device password once installed for maximum Security

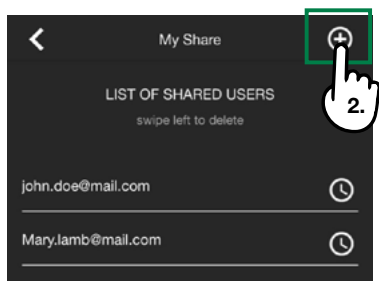
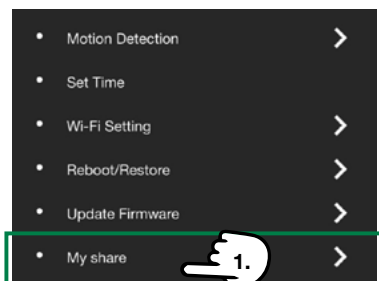


Device name


If you are using the door strike feature, we recommend that you set a unlock password (default 888888). Otherwise activate the “one key” unlock feature.

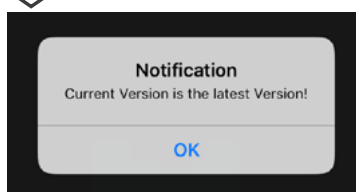
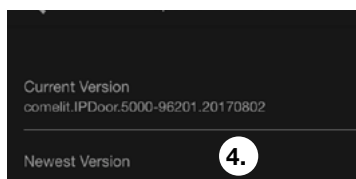
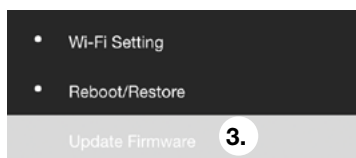
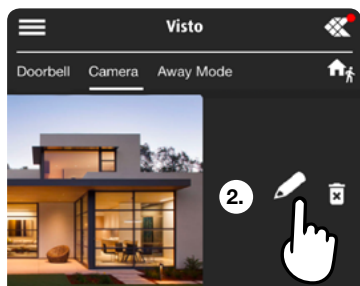
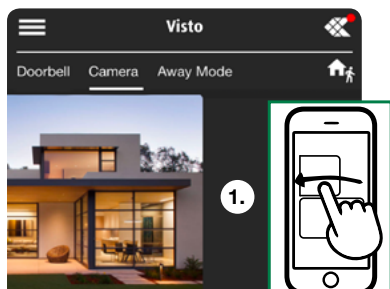


The Master user can invite an unlimited number of Slave users using the **My Share** button in the settings menu.



**ATTENTION! Visto Wi-Fi needs to be upadted to the latest firmware version.**

In the Visto Comelit app, a red dot on the  symbol, at the top right, indicates the availability of updates and useful information for the proper functioning of the device. Once your device is connected to the network, it is highly recommended to update it.



**Thank you for purchasing Visto by Comelit !**



CERTIFIED MANAGEMENT SYSTEMS



[www.comelitgroup.com](http://www.comelitgroup.com)

Via Don Arrigoni, 5 - 24020 Rovetta (BG) - Italy

 **Comelit®**  
Passion. Technology. Design.