

5 Maintenance

If you plan on not using the system for one week or longer, take out the filter and seal it with plastic wrap. Store the sealed filter in the fridge to protect the system against microbiological growth. To start the system again after the period of non-use, flush the system for at least 10 minutes OR change the filters.

If you will not use the system for two weeks or longer, disconnect the water supply, drain the system, and disconnect the power.

Follow the recommended filter replacement schedule. Replace the filter any time the indicator is on. Note that the actual filter life depends on the family size and water source quality. Failure to replace the filter at the appropriate times can damage the system and potentially cause health hazards.

Filter Service Life Table

Filter	Recommended replacement cycle
PCF Filter	12 months/1,000 gallons
RO Filter	36 months/3,000 gallons

The actual lifetime of the filter cartridge depends on the local tap water quality and daily usage.

The recommended replacement cycle is an average based on different local tap water quality. If the local tap water quality is below the average, the actual lifetime of the cartridge would differ from the recommended replacement cycle. If the filter cartridge is blocked, please replace it.

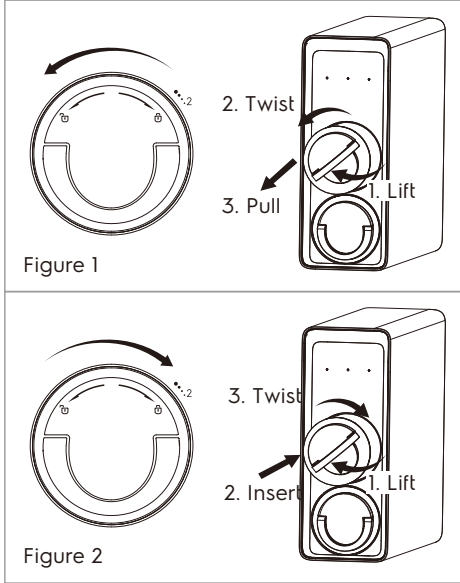
5.1 Filter Cartridge Replacement



NOTICE

The life of the filter cartridges depends on the water volume used and the quality of the feed water. For the best performance, please change your filter cartridge according to the filter lifetime indicator or the filter replacement cycle suggested below. When there is a noticeable change in taste, odor, or flow of filtered water, we recommend changing the filters as well.

Filter cartridge replacement



- Turn off the power and water supply before replacing the filter cartridges
- Lift the handle of the filter cartridge. Twist it anticlockwise and pull it out (Figure 1).
- Remove the packaging of the new filter and insert the cartridge in the system. Lift the handle of the filter cartridge and twist it clockwise to align the lock icon. Then put the handle back (Figure 2).
- Reset the filter lifespan, press and hold the reset button 3 seconds. The indicator will flash blue, confirming that the filter lifespan has been reset.
- When the filter is replaced, turn on the faucet and allow water to flush the filter.

Flush times are as follows:

PCF filter: 10 minutes

RO filter: 30 minutes

5.2 Automatic Flushing

The reverse osmosis membrane features a filtration capacity as fine as 0.0001 microns, effectively removing contaminants. The flush mode helps expel accumulated contaminants from the membrane, ensuring a longer filter lifespan and delivering purer water. The system will automatically enter flush mode in the following situations:

1. Flush for Power Restore

When power is restored after a blackout, the system will be forced to be flushed automatically for 30 seconds.

2. Flush for Accumulative Time per 24 hours

To maintain and extend the life expectancy of the filters, the system will be automatically flushed for 30 seconds per 24 hours.

3. Recycled Flushing

The recycled flushing function ensures that each cup of water is fresh and healthy. The system will automatically perform recycled flushing if no water is dispensed for 10 minutes after use.

The flush mode doesn't affect the user when taking water. If the user decides to take water during the flushing, the system will quit flushing and switch to dispensing.