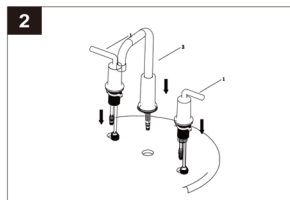
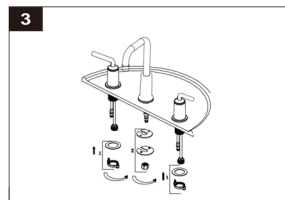


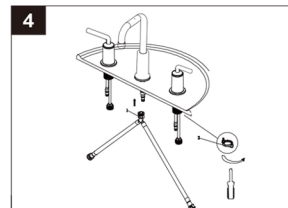
1. Shut off the water at the supply valves under the sink or at the main water supply. Disconnect the supply lines. Remove the existing faucet from the sink.



2. Insert the mounting shank on the spout through the center mounting hole in the sink. Secure the spout using the rubber washer, metal washer, and mounting nut. Hand tighten the mounting nut onto the end of the shank. Then attach the middle connector on the hose to the shank.

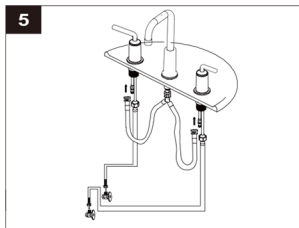


3. Slide the right handle assembly through the hole in the sink to the right of the spout. Make sure the longer tube is positioned away from the spout. Slide the metal washer onto the shank on the right handle assembly and then hand tighten the locking nut onto the end of the shank. Secure the locking nut into position by tightening the screws using a Phillips screwdriver. Repeat these steps to install the left handle assembly.



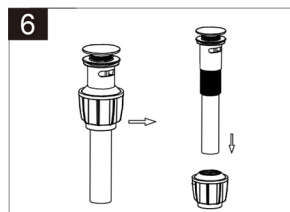
4. Push the quick-connect assembly on each end of the hose firmly upward onto the handle tube until it snaps onto the handle tube tab. Pull down gently to ensure the connection is secure.

If it is necessary to disconnect the quick-connect assembly from the handle tube, squeeze the tabs on the quick-connect assembly and pull down to remove from the handle tube.

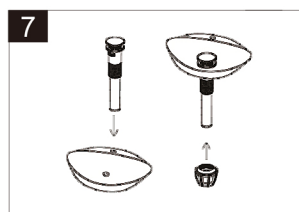


5. Attach one end of each of the water supply lines onto the handle assemblies, with hot water on the left and cold water on the right. Use 1/2 in. IPS faucet connections or supply line coupling nuts with 3/8 in. OD ball-nose risers. NOTE: Do not reuse existing supply lines. When installing new water supply lines, please refer to the supply line manufacturer's installation instructions. Tighten the supply line connections using an adjustable or basin wrench. Do not overtighten.

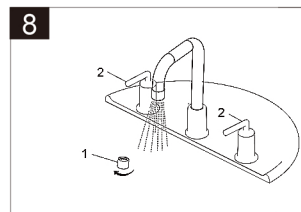
Attach each of the remaining ends of the water supply lines to the hot and cold shut-off valves and tighten with a wrench. Do not overtighten.



6. Install the push pop-up drain assembly: Turn the big nut clockwise to separate it from the drain body.



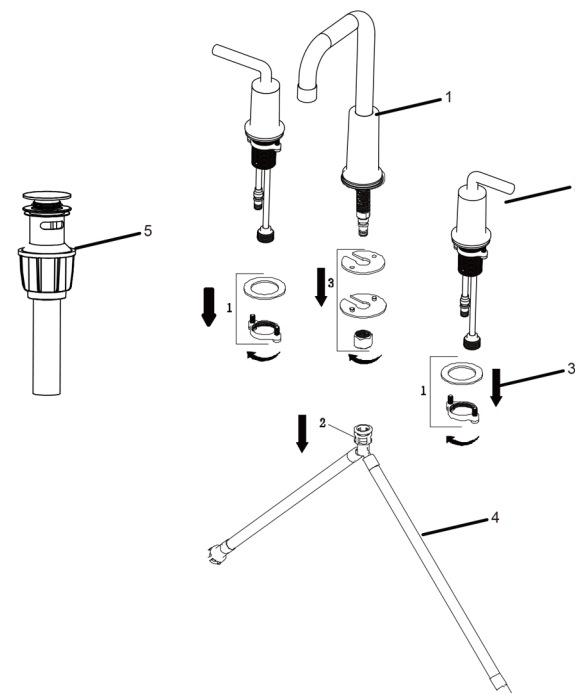
7. Apply a thin bead of putty/silicone onto the flange. Insert the drain body into the sink, slide the nut up and thread it counter clockwise on the drain body underneath the sink until it is firmly attached to the bottom of the flange. Do not overtighten the nut.



8. After installation is complete, remove the aerator from the spout. Turn on the water supply. Check for leaks at all waterway connections. If leaks occur, tighten the nuts on the water connection that is leaking. Fill the sink with water to check the drain for leaks. If water is leaking from the drain, tighten the mounting nut on the pop-up drain assembly.

After the pop-up drain has been checked for leaks, empty the sink. Run hot and cold water uninterrupted for at least one minute to flush away any debris that could cause damage to the internal parts. Turn off the water and reattach the aerator onto the spout.

## LED Widespread Lavatory Faucet



### Part List

Number	Name	Quantity
1	Faucet	1
2	Handles	2
3	Mounting assembly	2
4	Hose	1
5	Pop-up drain assembly	1