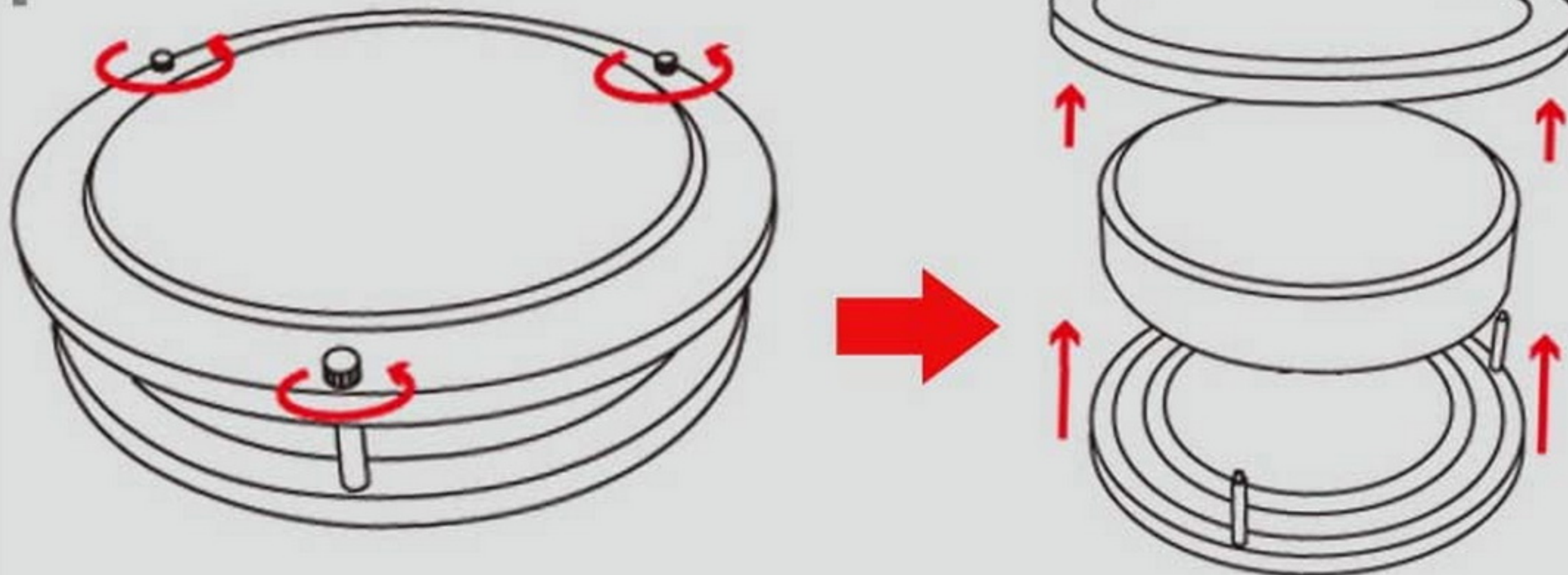


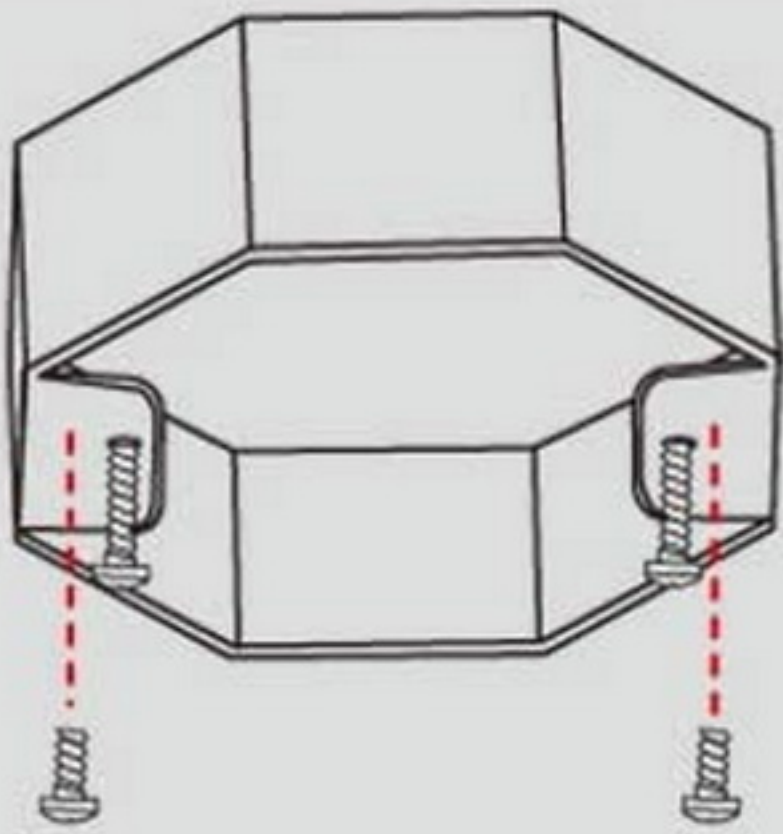
INSTALLATION STEPS

1



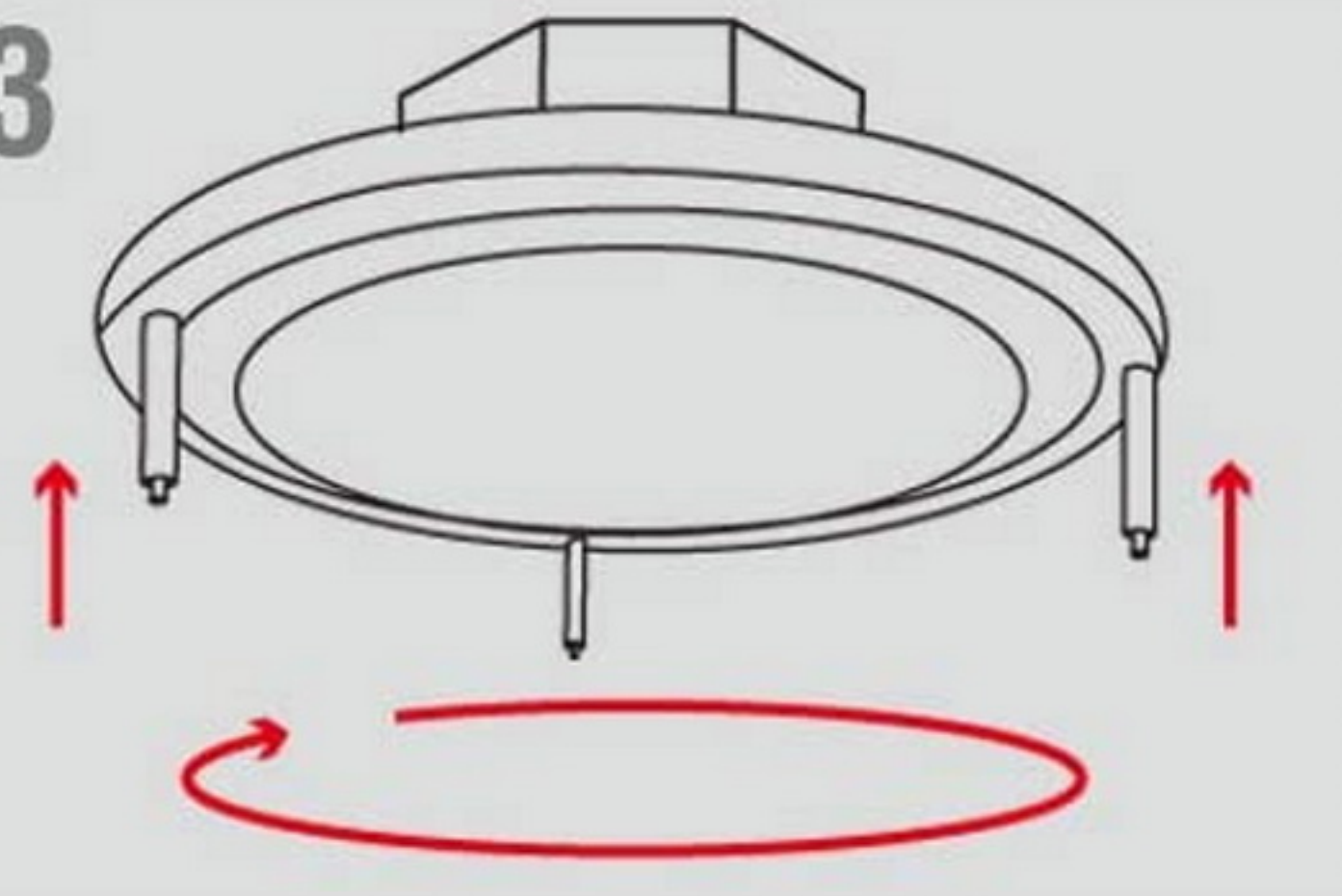
1. Start with unscrewing three cap nuts counter-clockwise, remove metal ring and the cover.

2



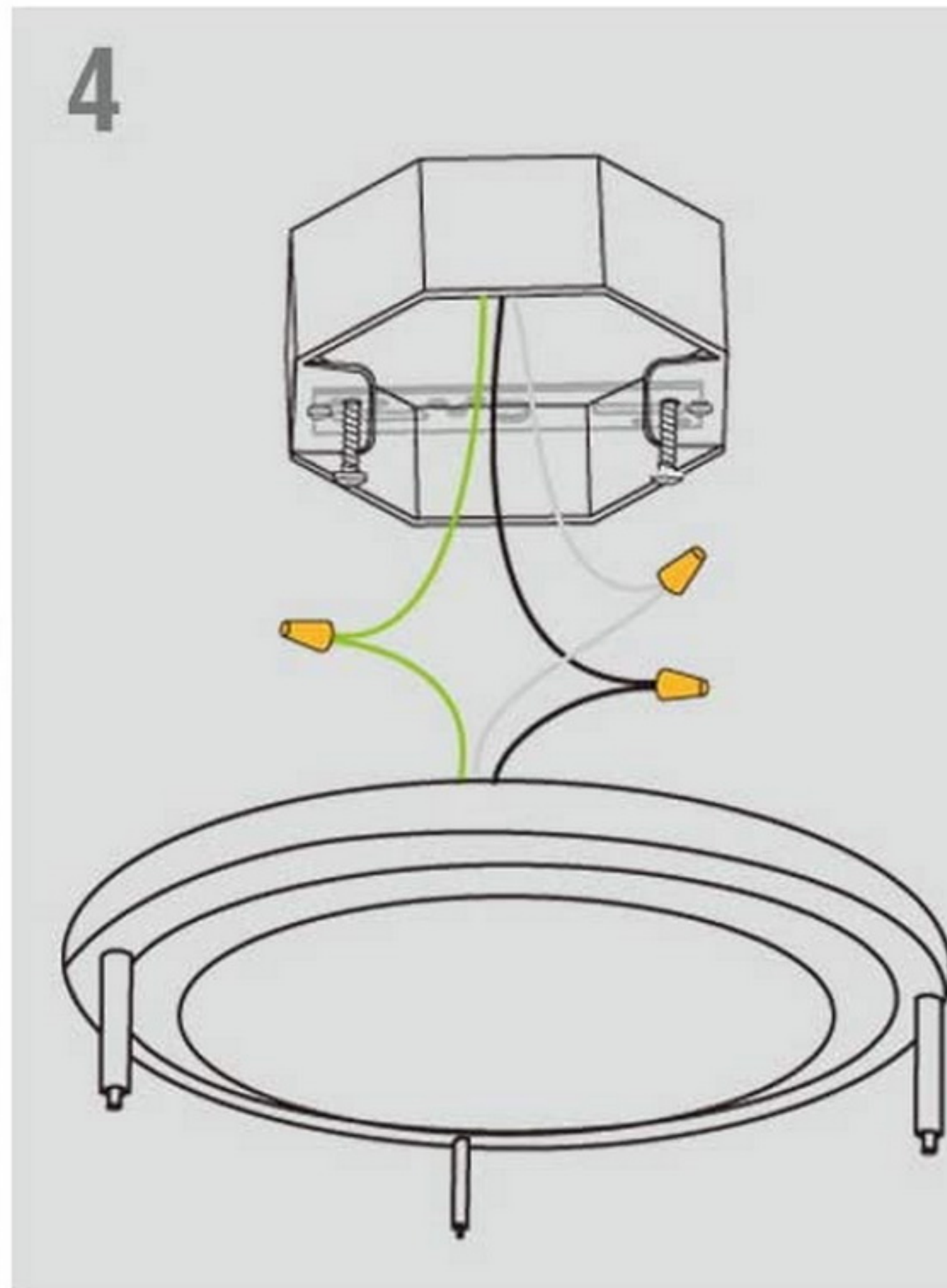
2. Drive the screws into the outlet box

3



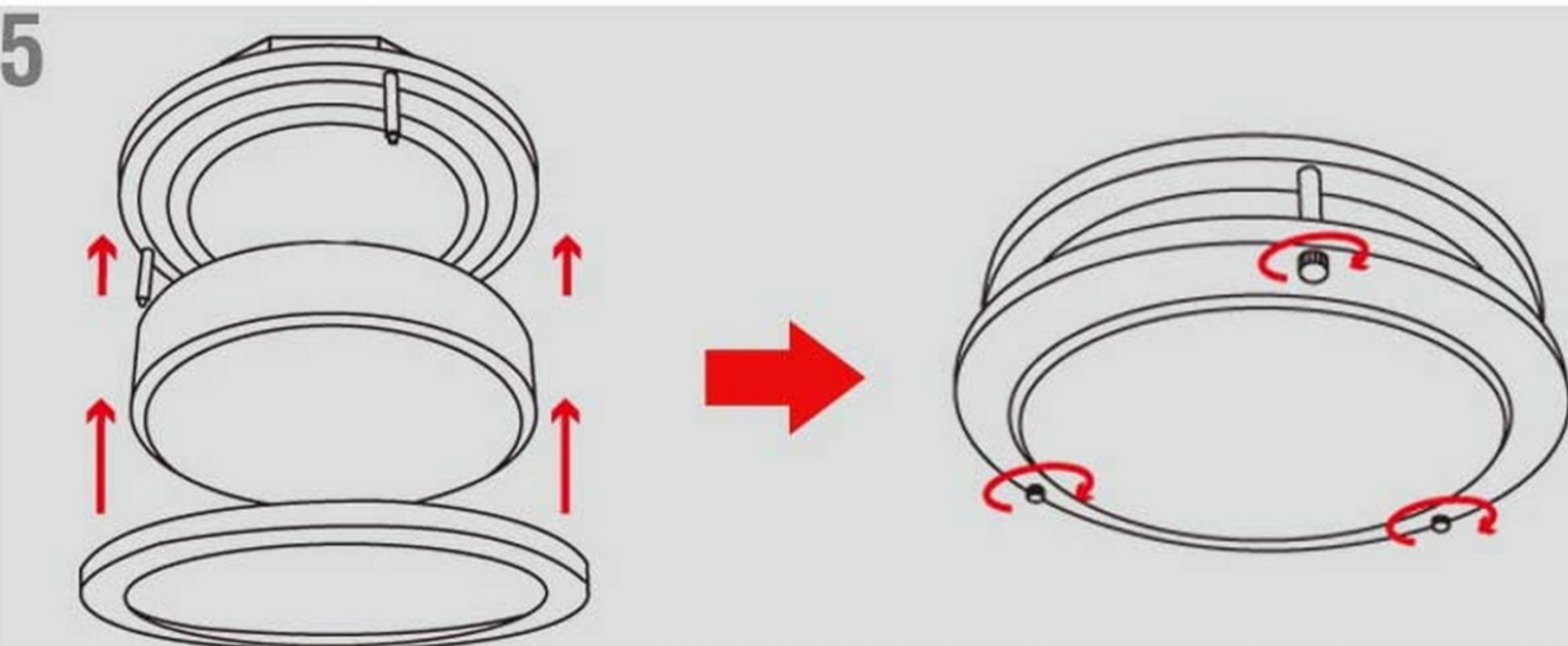
3. Connect the fixture wires, carefully tuck all wires back into the

4



4. Place the fixture pan over the junction box and feed fixture screws through keyhole slots. Rotate the fixture pan clockwise until screws lock onto the narrow end of the keyhole slots and

5



5. Secure the cover and metal ring to fixture pan using three cap nuts