

Installation Instruction

Freestanding Tub Filler Faucet Manual

Note: This instructions manual is written for universal use and may be subjected to specification variance of actual parts.



For easy installation of your faucet, please ensure the following:

- Read thoroughly all the instructions before installing the faucet.
- Read and understand all warnings, care and maintenance information.

Product Description & Information

Product Description & Information

The freestanding tub filler faucet upholds the timeless essence of antique faucet design while incorporating the benefits of modern day technology and convenience. Introducing a nostalgic look to your bathroom with our tub filler faucet that has two ergonomic lever handles with a corrosion and tarnish-resistant finish, and an elegant brass hand-shower that produces a truly enjoyable bathing experience.

PLEASE CAREFULLY READ THIS INSTRUCTIONS MANUAL BEFORE INSTALLING AND USING THE PRODUCT.

PLEASE KEEP THIS INSTRUCTION MANUAL FOR FUTURE REFERENCE REGARDING PRODUCT OPERATION AND MAINTENANCE.

Features:

- Elegant Brass Hand Shower
- Solid Brass Construction
- Ceramic Disc Cartridge
- Swivel Spout

Package Contents :

- 1- Freestanding Tub Filler Faucet
- 1- Installation Accessories
- 1- Hand Shower And Hose
- 2- Cover Plate

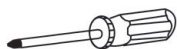
TOOLS YOU WILL NEED:



Plumber' s putty



Pipe tape



Philips screwdriver



Pliers



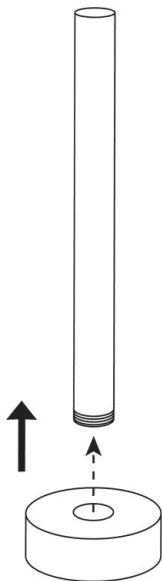
Adjustable wrench

Cleaning and Care

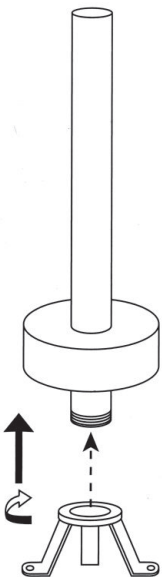
Care should be exercised when cleaning this product. Although its finish is durable, it can be damaged from harsh abrasives and cleaning pads. To clean, use light, non-abrasive cleaning solution or cleaning polish.

Faucet Installation Steps

Faucet Installation Steps

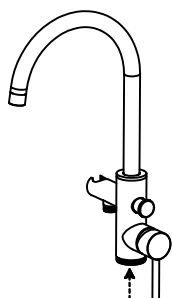


1. The floor escutcheon through the standing tube from top to bottom.



2. Installed the permanent seat.

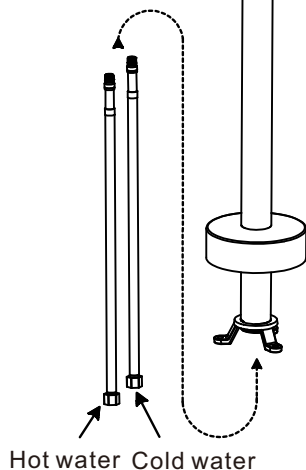
Faucet Installation Steps



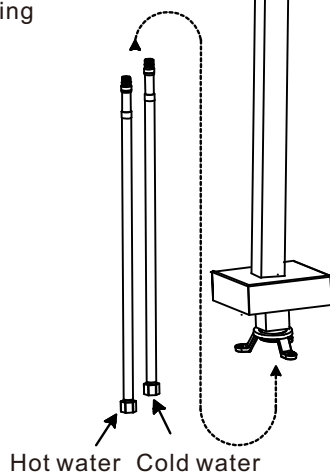
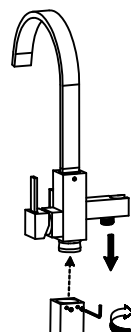
3. The flexible hoses through the standing tube. Twist tight to attach flexible hoses to the faucet.



4. Twist to tighten the standing tube to the top faucet.

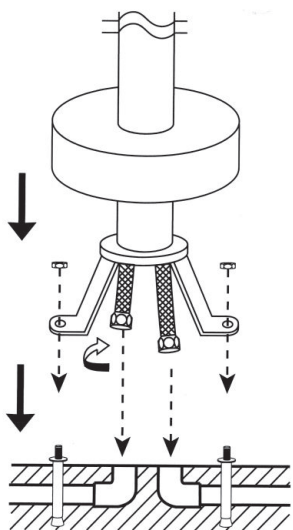


Round free-standing faucet

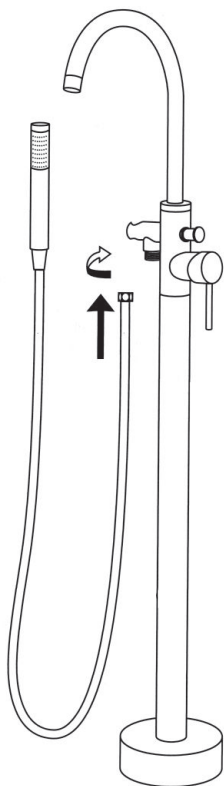


Square free-standing faucet

Faucet Installation Steps



5. Tighten the screws to the permanent seat on the ground. Insert the flexible hoses to the hot and cold outlet tube.



6. Install the hose to the hand shower and the tub filler. Please check the tub filler spout and hand shower water flow and its function.

Warranty Card

Dear customer: Thank you very much for choosing us and purchasing our products. To ensure better and satisfactory services, and to better protect your rights, please carefully read through the rules of your warranty card and take proper care.

Purchaser Name		Date of purchase	
Telephone No.			
Address			
Product			
Issues			

Regulation

For company products purchased through the regular channels, the customer shall enjoy the services provided by the company, except in the following circumstances:

- 1.Failure to install or use the product as required by the instruction manual
- 2.Products exceed the guarantee period;
- 3.No valid warranty and purchase documents;
- 4.Products that have been personnel disassembled or repaired without authorization from the supplying company;
- 5.Damages caused by improper use, misuse, accidents, errors or other human actions to the product;
- 6.Damages incurred during the transporting, loading and unloading of the product by the customer;
- 7.Other factors such as earthquakes and fire damages caused by the earthquake.

After-sale service

1. From the date of purchase, 5 years guaranteed for the main body and 2 years guarantee for the spare parts.
2. Problems such as corrosion or removal of covering, stains, damage and unauthorized removal or modification of the product, repair, etc. are not within the scope of the after-sales service.
3. Customers are required to hold an accident warranty card and valid proof of purchase.

