

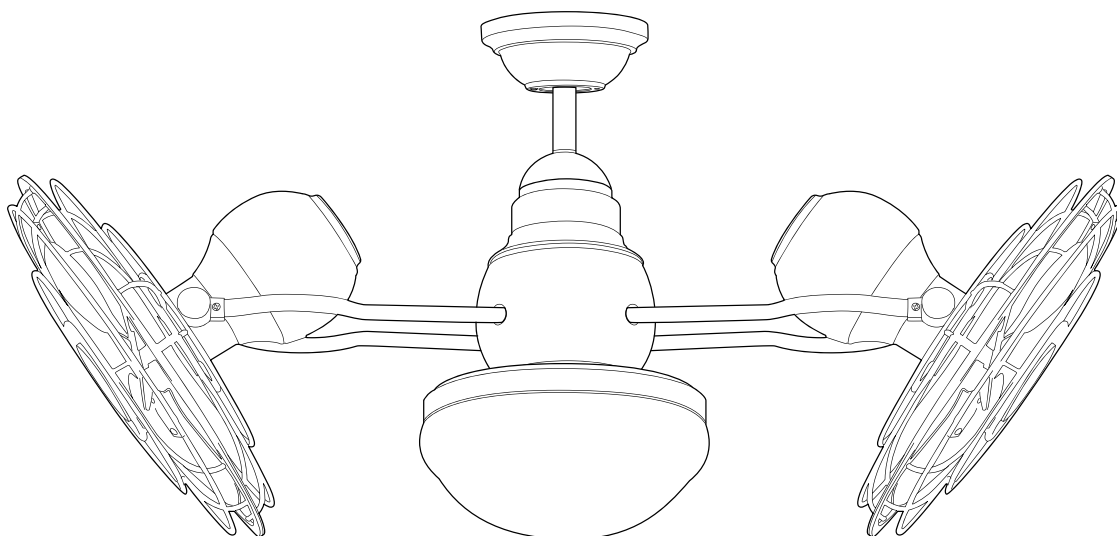


ITEM #0708569

FIELDER CEILING FAN

MODEL #JP13EB6CRS

Español p. 18



LISTED
For
Damp Location
E192641

ATTACH YOUR RECEIPT HERE

Serial Number _____ **Purchase Date** _____



Questions, problems, missing parts? Before returning to your retailer, call our customer service department at **1-800-527-1292**, 8:30 a.m. - 5 p.m., CST, Monday - Friday.

TABLE OF CONTENTS

Safety Information	2
Package Contents	4
Hardware Contents	5
Preparation	5
Initial Installation	6
Fan Mounting	7
Wiring	10
Final Installation	11
Installing Fan Without Light Kit	13
Automated Learning Process/Activating Code	14
Operating Instructions For Remote Control and Fan.....	15
Care and Maintenance	16
Troubleshooting.....	16
Limited Lifetime Warranty	17
Replacement Parts List	17



SAFETY INFORMATION

READ AND SAVE THESE INSTRUCTIONS

- Do not discard fan carton or foam inserts. Should this fan need to be returned to the factory for repairs, it must be shipped in its original packaging to ensure proper protection against damage that might exceed the initial cause for return.
- Make sure that all electrical connections comply with local codes, ordinances, the National Electrical Code and ANSI/NFPA 70-1999. Hire a qualified electrician or consult a do-it-yourself wiring handbook (available at Lowe's) if you are unfamiliar with installing electrical wiring.
- Make sure the installation site you choose allows a minimum clearance of 10 ft. from the blades to the floor and at least 30 in. from the end of the blades to any obstruction.
- After you install the fan, make sure that all connections are secure to prevent the fan from falling.
- The net weight of this fan including the light kit is: 24.95 lbs.



SAFETY INFORMATION

⚠ DANGER

If using this fan in a DAMP location, this fan must be connected to a supply circuit that is protected by a Ground Fault Circuit Interrupter (GFCI) to reduce the risk of personal injury, electrical shock or death.

⚠ WARNING



To reduce the risk of fire, electrical shock, or personal injury, mount fan to outlet box marked "ACCEPTABLE FOR FAN SUPPORT OF 35 LBS. (15.9 KG) OR LESS" and use mounting screws provided with the outlet box. Most outlet boxes commonly used for the support of lighting fixtures are not acceptable for fan support and may need to be replaced. Consult a qualified electrician if in doubt.

When mounting fan to a ceiling outlet box, use a METAL octagonal outlet box. Secure the outlet box directly to the building structure. The outlet box and its support must be able to support the moving weight of the fan (at least 35 lbs.). Do NOT use a plastic outlet box.

To avoid personal injury, the use of gloves may be necessary while handling fan parts with sharp edges.

To reduce the risk of fire, electrical shock, or personal injury, wire connectors provided with this fan are designed to accept only one 12-gauge house wire and two lead wires from the fan. If your house wire is larger than 12-gauge or there is more than one house wire to connect to the corresponding fan lead wires, consult an electrician for the proper size wire connectors to use.

To reduce the risk of fire or electrical shock, do not use the fan with any solid state speed control device or control fan speed with a full range dimmer switch.

To reduce the risk of fire, electrical shock, or personal injury, do not bend the blade arms when installing them, balancing the blades, or cleaning the fan. Do not insert objects between the rotating fan blades.

To reduce the risk of personal injury, use **only** parts provided with this fan. The use of parts OTHER than those provided with this fan will void the warranty.

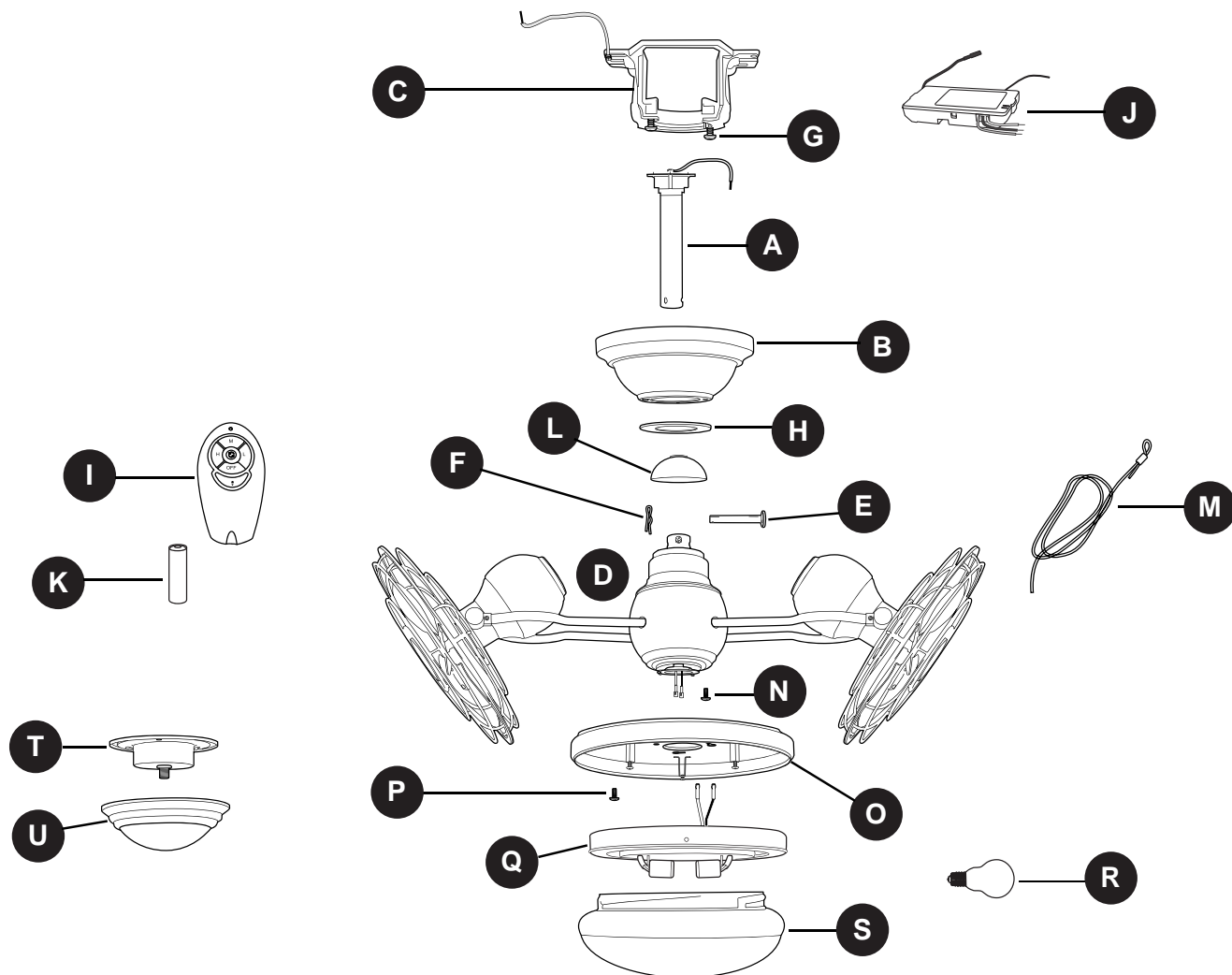
This fan **MUST** be installed with the safety cable provided with the fan. Failure to use the safety cable provided may result in personal injury, damage to the fan or damage to other property.

CAUTION

Before proceeding, be sure to shut off electricity at main switch or circuit breaker in order to avoid electrical shock.

Read all instructions and safety information before installing your new fan. Review the accompanying assembly diagrams.

PACKAGE CONTENTS

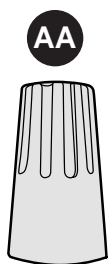


PART	DESCRIPTION	QUANTITY
A	Downrod	1
B	Canopy	1
C	Mounting Bracket	1
D	Motor Assembly	1
E	Pin (preassembled)	1
F	Clip (preassembled)	1
G	Canopy Mounting Screw (preassembled)	2
H	Canopy Cover	1
I	Remote Control Transmitter	1
J	Remote Control Receiver	1
K	Battery	1

PART	DESCRIPTION	QUANTITY
L	Yoke Cover	1
M	Safety Cable (preassembled)	1
N	Motor Plate Screw (preassembled)	3
O	Light Kit Fitter Plate	1
P	Light Kit Fitter Plate Screw (preassembled)	3
Q	Light Kit Fitter (preassembled)	1
R	Bulb	2
S	Glass Shade	1
T	Fitter Plate	1
U	Fitter Plate Cover	1

⚠ IMPORTANT REMINDER: You must use the parts provided with this fan for proper installation and safety.

HARDWARE CONTENTS (shown actual size)



E3 Wire
Connector

Qty. 10

PREPARATION

Before beginning assembly of product, make sure all parts are present. Compare parts with package contents list and hardware contents list. If any part is missing or damaged, do not attempt to assemble the product.

Estimated Assembly Time: 120 minutes

Tools Required for Assembly (not included): Electrical Tape, Phillips Screwdriver, Pliers, Safety Glasses, Stepladder and Wire Strippers

Helpful Tools (not included): AC Tester Light, Tape Measure, Do-It-Yourself Wiring Handbook and Wire Cutters

⚠ DANGER: When using an existing outlet box, make sure the outlet box is securely attached to the building structure and can support the full weight of the fan. Failure to do this can result in serious injury or death. The stability of the outlet box is essential in minimizing wobble and noise in the fan after installation is complete.

⚠ CAUTION: Be sure outlet box is properly grounded and that a ground wire (green or bare) is present.

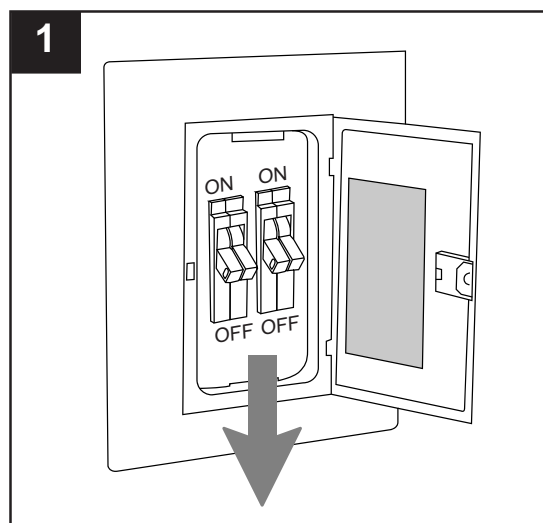
After opening top of carton, remove mounting hardware package from foam inserts. Remove motor from packing and place on carpet or on foam to avoid damage to finish.

⚠ CAUTION: Carefully check all screws, bolts and nuts on fan motor assembly to ensure that they are secured.

INITIAL INSTALLATION

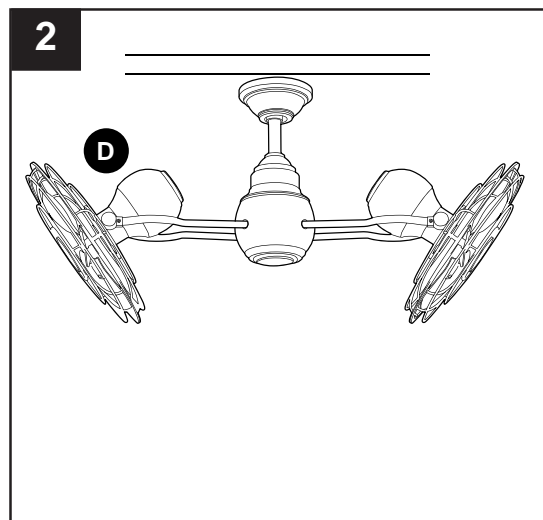
1. Turn off circuit breakers and wall switch to the fan supply line leads.

⚠ DANGER: Failure to disconnect power supply prior to installation may result in serious injury or death.

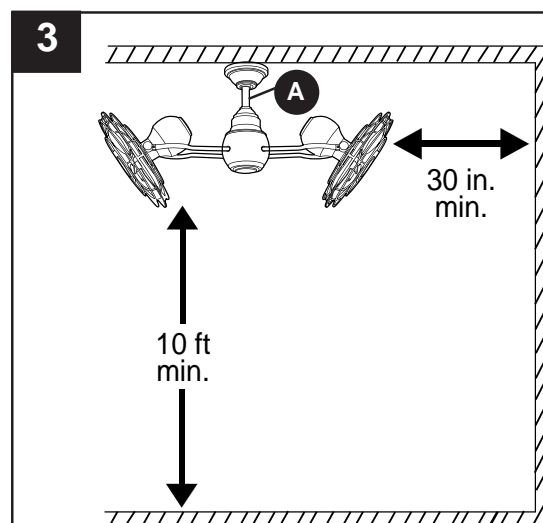


2. This fan can only be mounted with the downrod in the motor assembly (D).

NOTE: Angle mount or closemount configurations are **not** available for this fan.



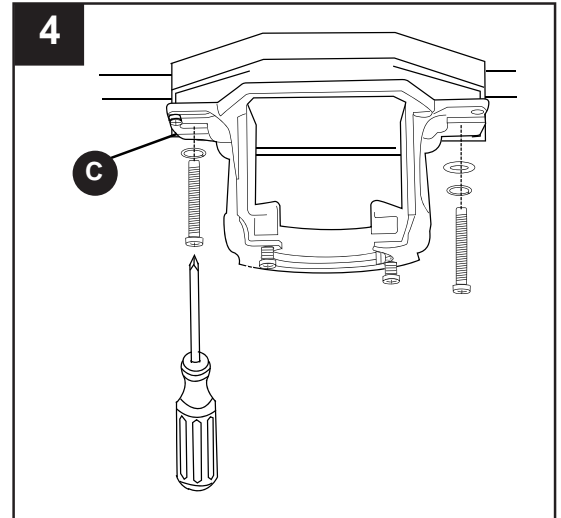
3. Check to make sure outermost edge of small fans will be at least 30 in. from any obstruction. Check downrod (A) length to ensure blades will be at least 10 ft. above the floor when smaller fans are *in fully tilted position*.



INITIAL INSTALLATION

- Secure mounting bracket (C) to outlet box (not included) using screws, spring washers, and flat washers provided with the outlet box.

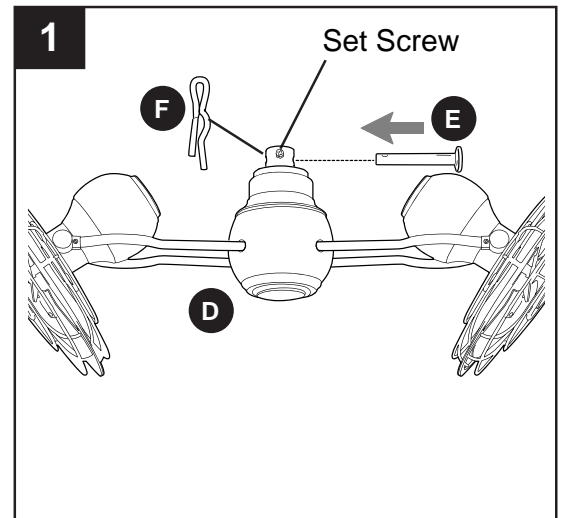
***NOTE:** It is very important that you use the proper hardware when installing the mounting bracket (C) as this will support the fan.



FAN MOUNTING

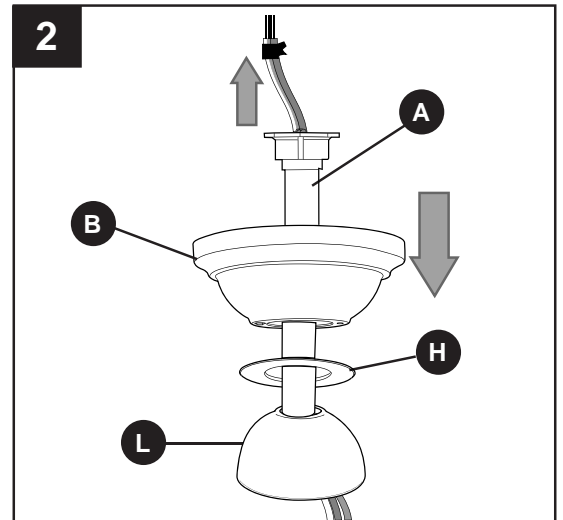
- Remove pin (E) and clip (F) from yoke at top of motor assembly (D) and partially loosen preassembled set screws.

***Helpful Hint:** Downrod-style mounting is best suited for ceilings 8 ft. (2.44 m) high or higher. For taller ceilings you may want to use a longer downrod (not included) than the one provided. A longer downrod is sometimes necessary to ensure proper blade clearance.

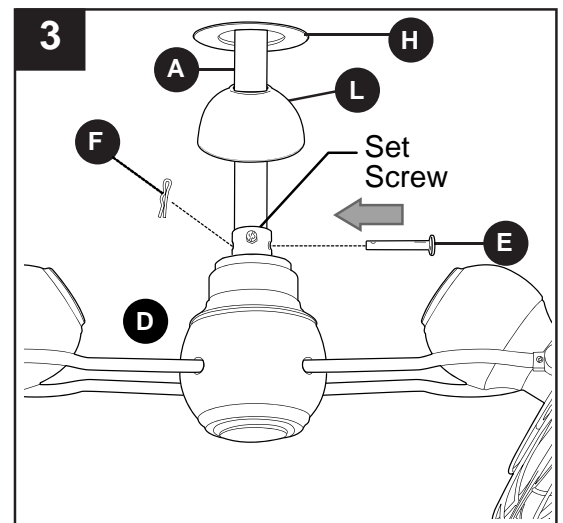


FAN MOUNTING

2. Insert downrod (A) through canopy (B), canopy cover (H) and yoke cover (L). **[NOTE: Canopy cover (H) must be turned with the shiny side toward the motor assembly (D).]** Thread wires from motor assembly (D) through downrod (A).



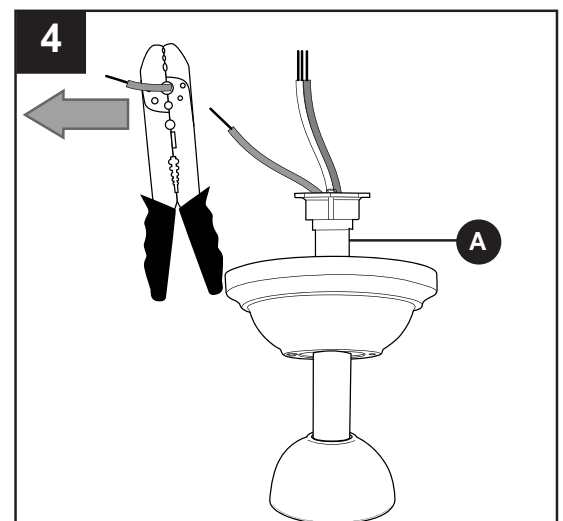
3. Slip downrod (A) into yoke at top of motor assembly (D), align holes and re-install pin (E) and clip (F). Re-tighten set screws in yoke and then tighten nuts. Slide yoke cover (L) down until it rests on top of motor assembly (D).



4. Depending on the length of downrod (A) you use, you may need to cut the lead wires back to simplify the wiring. If you decide to cut back the lead wires, it is suggested that you do so in the following manner:

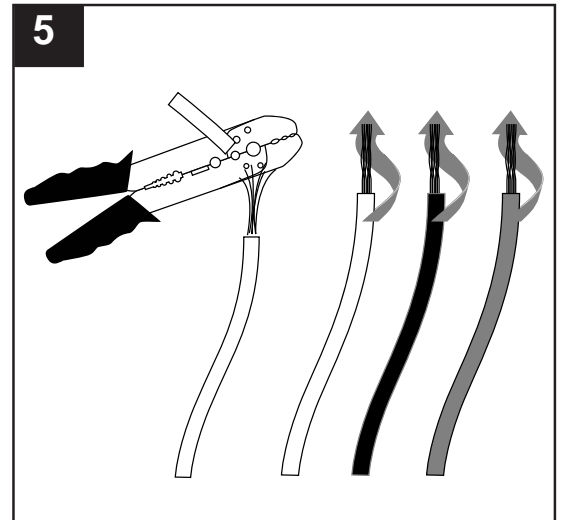
Take the lead wires and make sure that you have pulled them all the way through the top of the downrod (A). Start at the TOP of the downrod (A) and measure 8 in. of lead wire, and then cut the excess wire off with wire cutters (not included).

NOTE: If you do *not* cut back the lead wires, **Steps 4 and 5 are not necessary and you may proceed to Step 6 instead.**



FAN MOUNTING

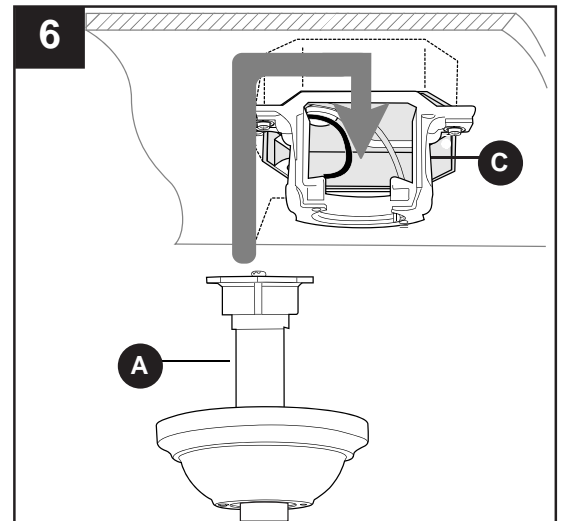
5. If you decided to cut back the lead wires in Step 4, strip a 1/2 in. of insulation from end of white wire. Twist stripped ends of each strand of wire within the insulation with pliers (not included). Repeat Step 5 for black, blue (if applicable) and green wires.



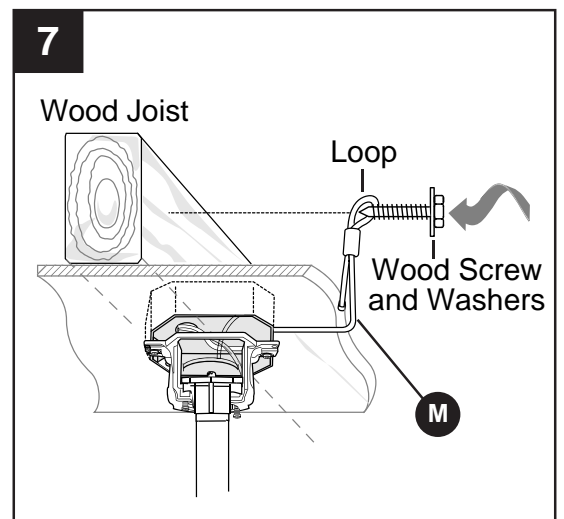
6. Slide downrod (A) through opening in mounting bracket (C) and then turn the downrod (A) so the straight edges at the top of the downrod (A) align with the sides of the mounting bracket (C). Pull down firmly on the downrod (A) until it sits securely inside the mounting bracket (C).

⚠ DANGER: Failure to secure downrod (A) in mounting bracket (C) may result in serious injury or death.

IMPORTANT: Due to the size (width) of this fan, it is advisable to seek the help of another person to hold the stepladder in place and to then help lift the fan up to you once you are set on the ladder.



7. Find a secure attachment point (wood ceiling joist recommended) and secure safety cable. Use a heavy-duty wood screw, washer and lock washer (all not included) to secure safety cable (M) loop. If necessary, adjust the loop at the end of the safety cable. The loop at the end of the safety cable (M) should just fit over the threads on the wood screw. Extra cable slack can be left in ceiling area.



WIRING

⚠ WARNING: To reduce the risk of fire, electrical shock, or personal injury, wire connectors provided with this fan are designed to accept only one 12-gauge house wire and two lead wires from the fan. If your house wire is larger than 12-gauge or there is more than one house wire to connect to the corresponding fan lead wires, consult an electrician for the proper size wire connectors to use.

⚠ CAUTION: Be sure outlet box is properly grounded and that a ground (green or bare) wire is present.

⚠ WARNING: If house wires are different colors than referred to in the following steps, stop immediately. A professional electrician is recommended to determine wiring.

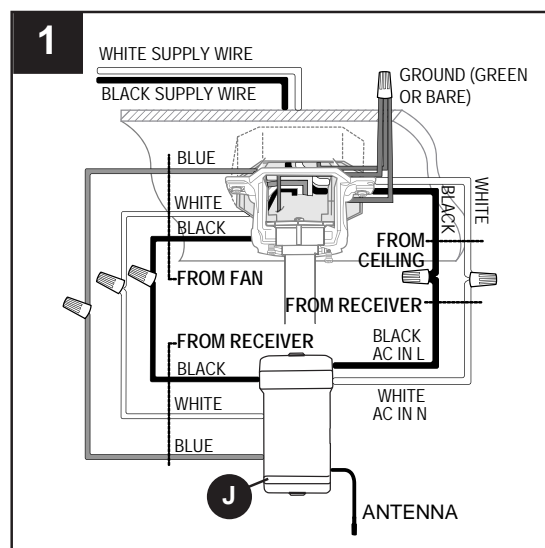
⚠ DANGER: If using this fan in a DAMP location, this fan must be connected to a supply circuit that is protected by a Ground Fault Circuit Interrupter (GFCI) to reduce the risk of personal injury, electrical shock or death.

NOTE: Black and blue wires are hot power for fan. White wire is common for fan. Green or bare wire is ground.

NOTE: Please refer to installation and operating instructions for remote control.

1. Make the necessary wiring connections for remote control operation according to Fig. 1. For each wire connection, use one of the wire connectors (AA) provided, making sure to screw wire connector (AA) on in a clockwise direction. [Make sure to connect all **GROUND (GREEN)** wires together from fan (on downrod (A) and mounting bracket C)) to **BARE/GREEN** wire from ceiling.]

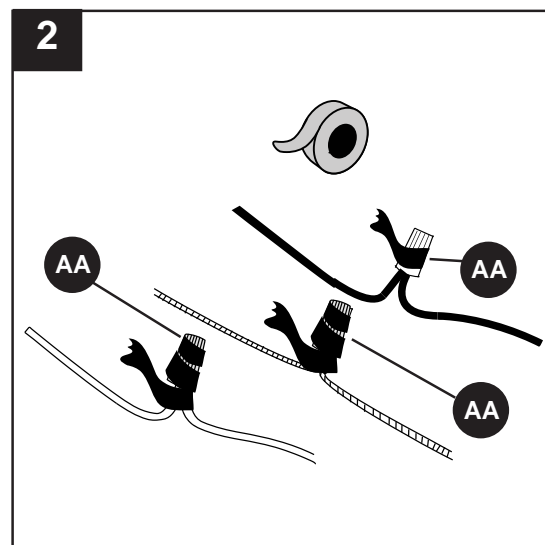
WIRING TIP: Wiring your fan's remote control requires extreme patience. Take mandatory breaks while wiring to allow your arms to rest.



2. Wrap electrical tape (not included) around each individual wire connector (AA) down to the wire.

⚠ WARNING: Make sure no bare wire or wire strands are visible after making connections. Place green and white connections on opposite side of box from the black connections.

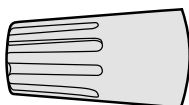
Turn spliced/taped wires upward and gently push wires and wire connectors (AA) into outlet box.



Hardware Used



E3 Wire Connector



x 6

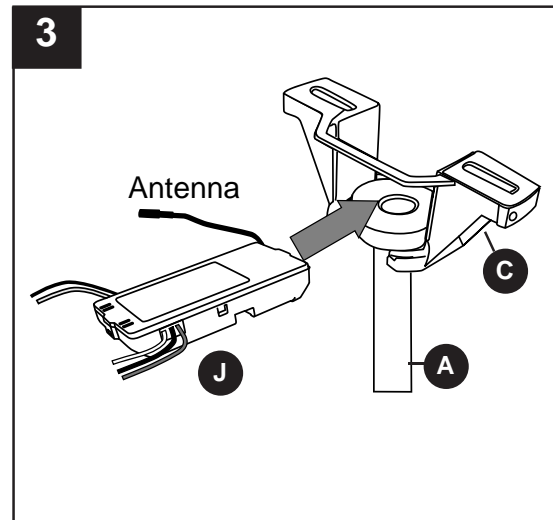
WIRING

3. Gently slide remote control receiver (J) smooth side up into mounting bracket (C). Turn spliced/taped wires upward and gently push wires and wire connectors (AA) into outlet box. Let antenna from remote control receiver (J) hang to the side.

NOTE: The remote control included with this fan meets the following requirements:

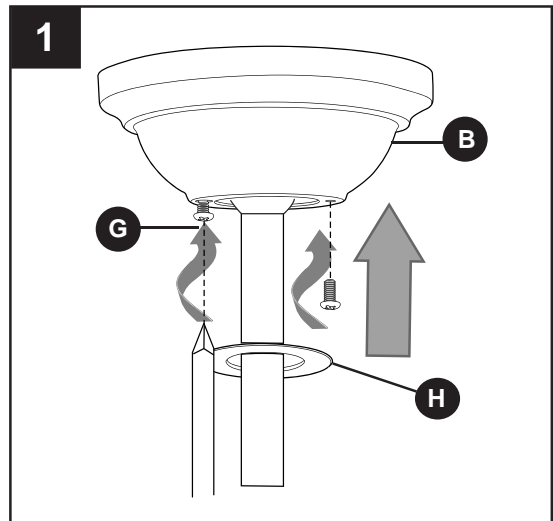
- a. Not for use with solid state fans.
- b. Electrical rating: 120V / 60 Hz;
motor amps:1.5 MAX.

Should you choose to use a different remote control with this fan, it must also meet these same requirements



FINAL INSTALLATION

1. Locate two canopy mounting screws (G) on underside of mounting bracket (C) and remove canopy mounting screw (G) closest to the open end of the mounting bracket (C). Partially loosen the other canopy mounting screw (G). Lift canopy (B) to mounting bracket (C). Place rounded part of slotted hole in canopy (B) over loosened canopy mounting screw (G) in mounting bracket (C) and push up. Twist canopy (B) to lock. Re-insert canopy mounting screw (G) that was removed, and then tighten both canopy mounting screws (G) securely. Slide canopy cover (H) up to canopy (B), aligning rounded part of slotted holes in canopy cover (H) with screwheads in bottom of canopy (B). Turn canopy cover (H) to the right (clockwise) until it stops.



If you do NOT wish to use the light kit, skip to section titled **INSTALLING FAN WITHOUT LIGHT KIT** on page 13.

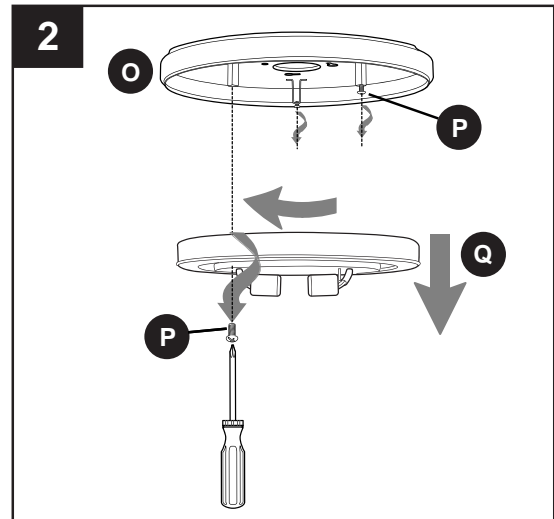
If you DO wish to use the light kit, proceed to Step 2.

FINAL INSTALLATION

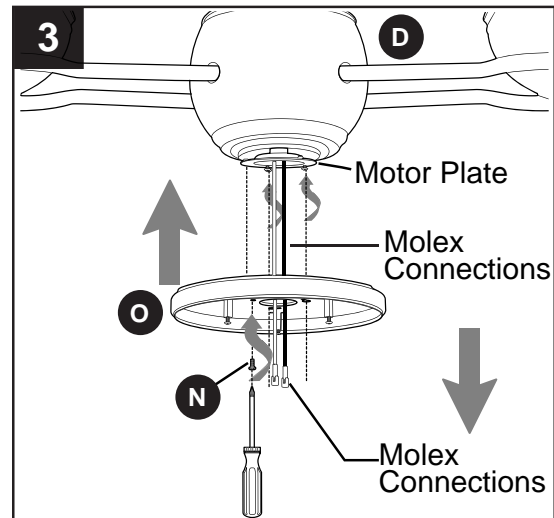
2. Remove light kit fitter plate screw (P) located in the non-slotted hole in light kit fitter (Q) and partially loosen the other two light kit fitter plate screws (P).

⚠ CAUTION: Do NOT remove screws on light kit fitter (Q) that have washers; these are not the light kit fitter plate screws (P).

Twist light kit fitter (Q) counterclockwise to remove it from the inside of the light kit fitter plate (O).

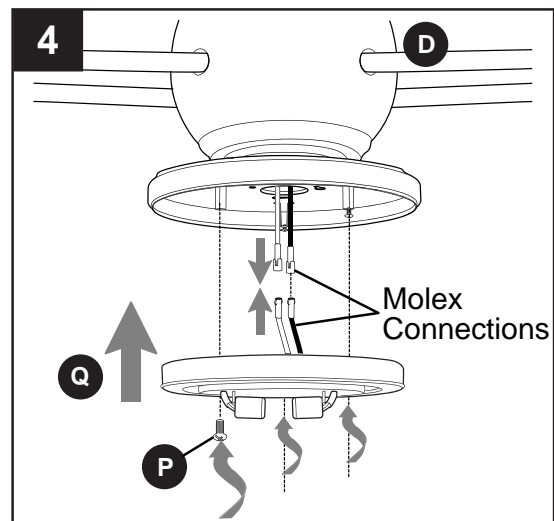


3. Remove one motor plate screw (N) from motor plate on underside of motor assembly (D) and partially loosen the other two motor plate screws (N). Feed molex connections from motor assembly (D) through the middle of light kit fitter plate (O). Then, align the slotted holes in the center of light kit fitter plate (O) with loosened motor plate screws (N), twisting it clockwise until it locks. Re-insert motor plate screw (N) previously removed and securely tighten all three motor plate screws (N).



4. Connect the molex connections from the motor assembly (D) to those from the light kit fitter (Q) -- black to black and white to white. Make sure they are secure.

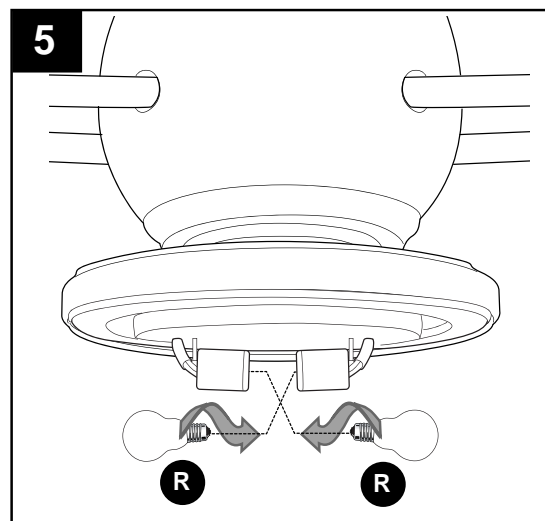
Align slotted holes in light kit fitter (Q) with loosened light kit fitter plate screws (P), then twist it clockwise until it locks. Re-insert light kit fitter plate screw (P) previously removed (Step 2, page 12) and tighten all three light kit fitter plate screws (P) securely.



FINAL INSTALLATION

5. Install bulbs (R).

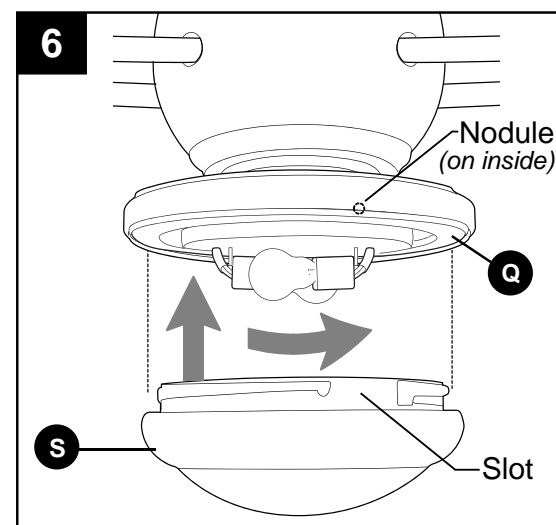
⚠ WARNING: When you need to replace bulb(s), please allow the bulb(s) and glass shade to cool down before touching them.



6. Align slots on glass shade (S) with nodules on the inside of the light kit fitter (Q). Turn glass shade (S) clockwise until it no longer turns.

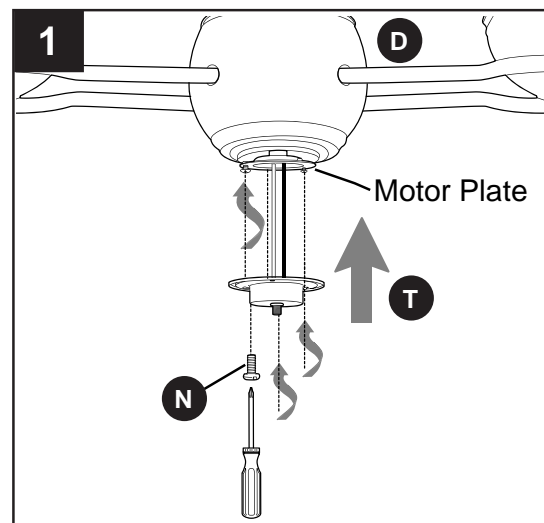
NOTE: Pull down gently on the glass shade (S) to make sure it is secured completely.

Assembly is now complete.



INSTALLING FAN WITHOUT LIGHT KIT

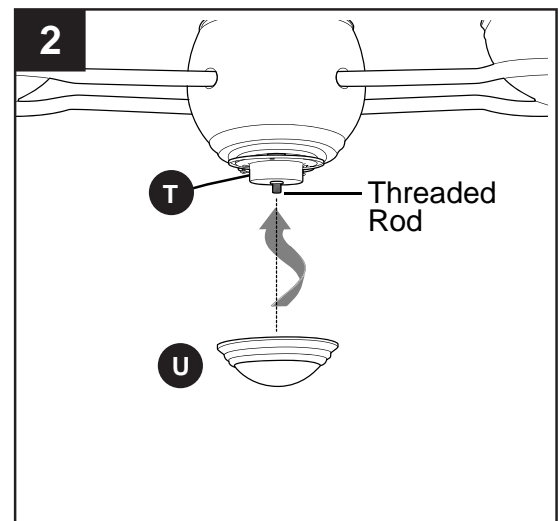
1. To install the fan without the light kit, remove one motor plate screw (N) from motor plate on underside of motor assembly (D) and partially loosen the other two motor plate screws (N). Align slotted holes in fitter plate (T) with loosened motor plate screws (N), then twist it clockwise until it locks. Re-insert motor plate screw (N) previously removed and securely tighten all three motor plate screws (N).



INSTALLING FAN WITHOUT LIGHT KIT

- Align hole on the inside of the fitter plate cover (U) with the threaded rod on the fitter plate (T). Secure fitter plate cover (U) by turning fitter plate cover (U) clockwise until it no longer turns.

Assembly is now complete.

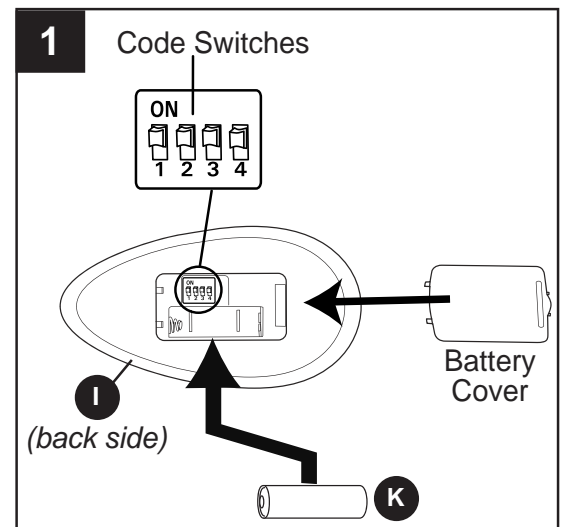


AUTOMATED LEARNING PROCESS/ACTIVATING CODE

CAUTION: The remote control transmitter (I) can be programmed to multiple receivers or fans. If this is **not** desired, turn wall switch off to any other programmable receiver or fan.

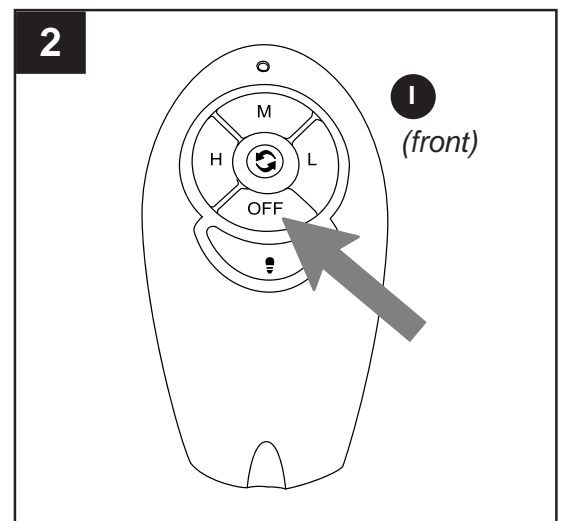
- Remove battery cover from back side of remote control transmitter (I).

Install the 12-volt battery (K) and then replace battery cover on remote control transmitter (I).



- Restore electrical power. Within 30 seconds of restoring electrical power, press the "OFF" button on the front of the remote control transmitter (I) for 5 seconds or until light on fan blinks twice. Use the remote control to test the oscillation, fan and light functions (see operating instructions below) to confirm the learning process is complete.

IMPORTANT: To prevent damage to remote control transmitter (I), remove the battery (K) if not used for long periods. Store the remote control transmitter (I) away from excess heat.



AUTOMATED LEARNING PROCESS/ACTIVATING CODE

Modifications not approved by the party responsible for compliance could void the user's authority to operate the equipment.

*NOTE: This equipment has been tested and found to comply with the limits for a Class B digital device, pursuant to Part 15 of the FCC Rules. These limits are designed to provide reasonable protection against harmful interference in a residential installation. This equipment generates, uses and can radiate radio frequency energy and, if not installed and used in accordance with the instructions, may cause harmful interference to radio communications. However, there is no guarantee that interference will not occur in a particular installation. If this equipment does cause harmful interference to radio or television reception, which can be determined by turning the equipment off and on, the user is encouraged to try to correct the interference by one or more of the following measures:

- * Reorient or relocate the receiving antenna.
- * Increase the separation between the equipment and receiver.
- * Connect the equipment into an outlet on a circuit different from that to which the receiver is connected.

Consult the dealer or an experienced radio/TV technician for help.

OPERATING INSTRUCTIONS FOR REMOTE CONTROL AND FAN


1. Operation buttons on the panel of the remote control transmitter (I) :


H **Button** turns the 2 **smaller fans** to HIGH speed

M **Button** turns the 2 **smaller fans** to MEDIUM speed

L **Button** turns the 2 **smaller fans** to LOW speed

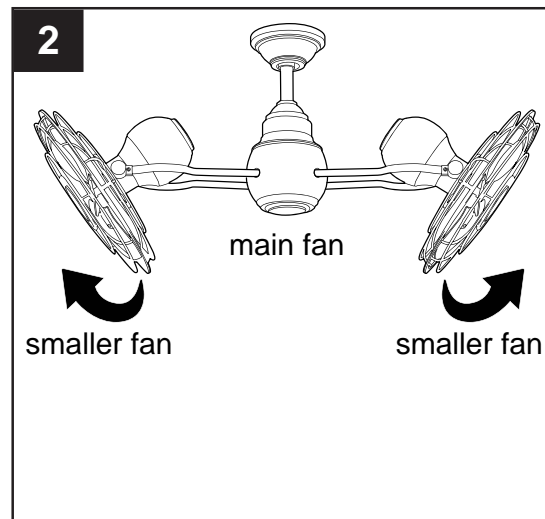
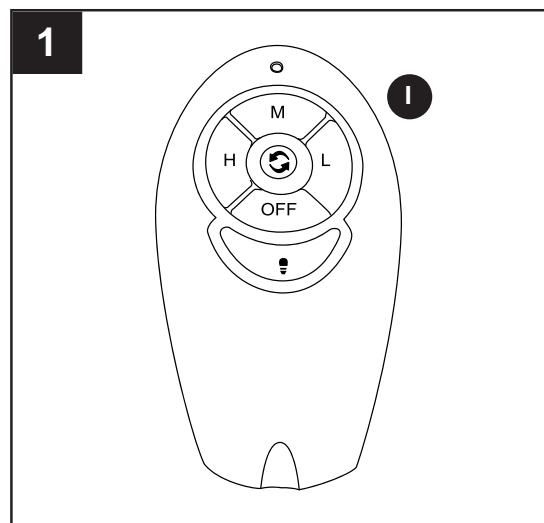
OFF **Button** turns the 2 **smaller fans** OFF

 **Button** turns **main fan** ON/OFF when pressed once (i.e., controls rotation of the entire fan)

 **Button** turns light ON/OFF when pressed once; If you press button in excess of 0.7 seconds, it becomes a dimmer.

2. The tilt angle of the smaller fans may be adjusted up or down by simply manually moving them gently up or down.

CAUTION: To avoid personal injury or damage to the fan(s), both the main fan and the smaller fans MUST BE OFF before adjusting the smaller fans up or down.



CARE AND MAINTENANCE

At least twice each year, lower canopy (B) to check downrod (A) assembly, and then tighten all screws on the fan. Clean motor assembly (D) with only a soft brush or lint-free cloth to avoid scratching the finish. Clean blades in smaller fans with a lint-free cloth.

IMPORTANT: Shut off main power supply before beginning any maintenance. Do not use water or a damp cloth to clean the ceiling fan.

TROUBLESHOOTING

! WARNING: Before beginning work, shut off the power supply to avoid electrical shock.

PROBLEM	POSSIBLE CAUSE	CORRECTIVE ACTION
Fan does not move.	<ol style="list-style-type: none">1. Power is off or circuit breaker in electrical box trips.2. Faulty wire connection.3. Learning code process between fan and remote control transmitter may not have been successful and learning code was not activated.	<ol style="list-style-type: none">1. Turn power on or check circuit breaker.2. Turn power off. Loosen canopy and check all connections.3. Turn off power and repeat instructions in Step 2 on page 16.
Noisy operation.	<ol style="list-style-type: none">1. Full range dimmer switch.2. Fan is new.	<ol style="list-style-type: none">1. Use only remote control provided with fan.2. Allow fan a "break in" period of a few days, especially when running the fan at Medium and High speeds.
Excessive wobbling.	<ol style="list-style-type: none">1. Fan not securely mounted.2. Set screw(s) on motor housing yoke is (are) not tightened properly.3. Set screw on hanging ball is not tightened properly.	<ol style="list-style-type: none">1. Turn power off. Carefully loosen canopy and verify that mounting bracket is secure.2. Tighten yoke set screw(s) securely.3. Carefully loosen and lower canopy and verify that set screw on hanging ball is tightened securely.
Fan operates but light fails.	<ol style="list-style-type: none">1. Bulb(s) not installed correctly.2. Wires in canopy not wired properly.3. Wires in light kit fitter not wired correctly.4. Light kit is lamped with more than the allowable 190W, causing the wattage limiting device to interrupt the flow of electricity to the light kit.	<ol style="list-style-type: none">1. Re-install bulb(s).2. Check wires in canopy and, if necessary, re-wire according to instructions on page 10.3. Check that the molex connections in the light kit fitter are connected properly according to instructions on page 13.4. Lamp light kit with bulbs that total no more than 190W.
Fan and light (if applicable) fail to operate with remote control.	<ol style="list-style-type: none">1. Learning process was not done correctly and code was not activated.2. Battery in remote control transmitter is no longer good	<ol style="list-style-type: none">1. Turn power off and repeat Step 2 on page 16.2. Check battery in transmitter and replace battery if necessary.

NOTE: A small amount of "wobble" is normal and should not be considered a defect.

WARRANTY

LITEX LIFETIME LIMITED WARRANTY:

LITEX INDUSTRIES, LTD. warrants this fan to the original household purchaser for indoor use under the following provisions:

1-YEAR WARRANTY: LITEX INDUSTRIES, LTD. will replace or repair any fan which has faulty performance due to a defect in material or workmanship. Contact Customer Service at 1-800-527-1292 to arrange for return of fan. Return fan, shipping prepaid, to Litex Industries, Ltd. We will repair or ship you a replacement fan, and we will pay the return shipping cost.

5-YEAR WARRANTY: LITEX INDUSTRIES, LTD. will repair or replace, at no charge to the original purchaser, any fan motor that fails to operate satisfactorily when failure results from normal use. **RETURN FAN MOTOR ONLY**, shipping prepaid, to Litex Industries. We will repair or ship purchaser a replacement motor and Litex will pay the return shipping cost.

6-YEAR to LIFETIME LIMITED WARRANTY: LITEX INDUSTRIES, LTD. will repair the fan, at no charge to the original purchaser for labor only, if the fan motor fails to operate satisfactorily when failure results from normal use. Parts used in the repair will be billed to the purchaser at prevailing prices at time of repair.

The purchaser shall be responsible for all costs incurred in the removal, reinstallation and shipping of the product for repairs.

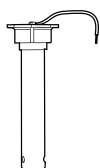
This warranty does not apply when damage from mechanical, physical, electrical or water abuse results in causing the malfunction. Deterioration of finishes or other parts due to time or exposure to salt air is specifically exempted under this warranty.

Neither Litex Industries nor the manufacturer will assume any liability resulting from improper installation or use of this product. In no case shall the company be liable for any consequential damages for breach of this, or any other warranty expressed or implied whatsoever. This limitation as to consequential damages shall not apply in states where prohibited.

REPLACEMENT PARTS LIST

For replacement parts, call our customer service department at **1-800-527-1292**, 8:30 a.m. - 5 p.m., CST, Monday - Friday.

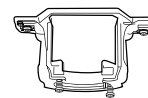
PART	DESCRIPTION
A	Downrod
B	Canopy
C	Mounting Bracket



A



B



C

