

# PRO STEEL 6030

all measurements shown in inches

## LEFT-HAND DRAIN BATHTUB

60 x 30 x 14 1/4 inches

Available at

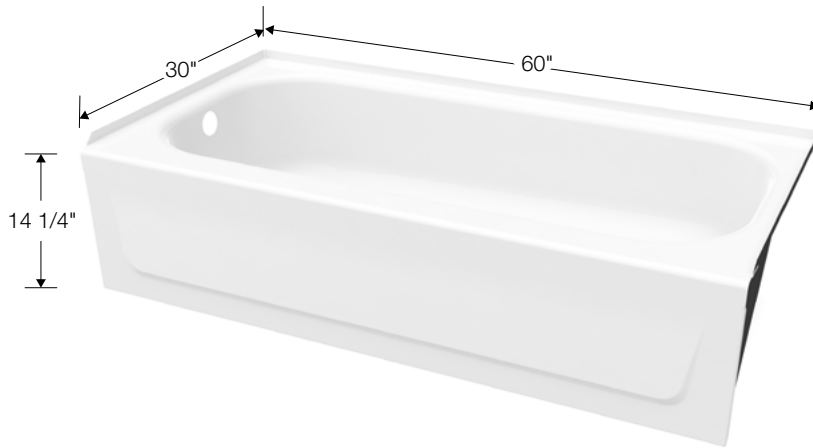


### FEATURES

- High-gloss, durable porcelain finish is non-porous, easy to clean and won't fade, stain or crack
- Full slip-resistant surface
- Full length leveling pad provides support and easier installation, no mortar required
- Sufficient deck space for bath essentials storage
- Integrated tiling flange for efficient water management
- 40 degree lumbar support for comfortable bathing
- Chrome drain kit included
- 1-year warranty
- Available in White

### CODE COMPLIANCE

- ANSI
- FHA
- MAAX products adhere to one or more of the following certifications: ICC ES PMG



MODEL #: LOW-3365-00

ITEM #: 3492122

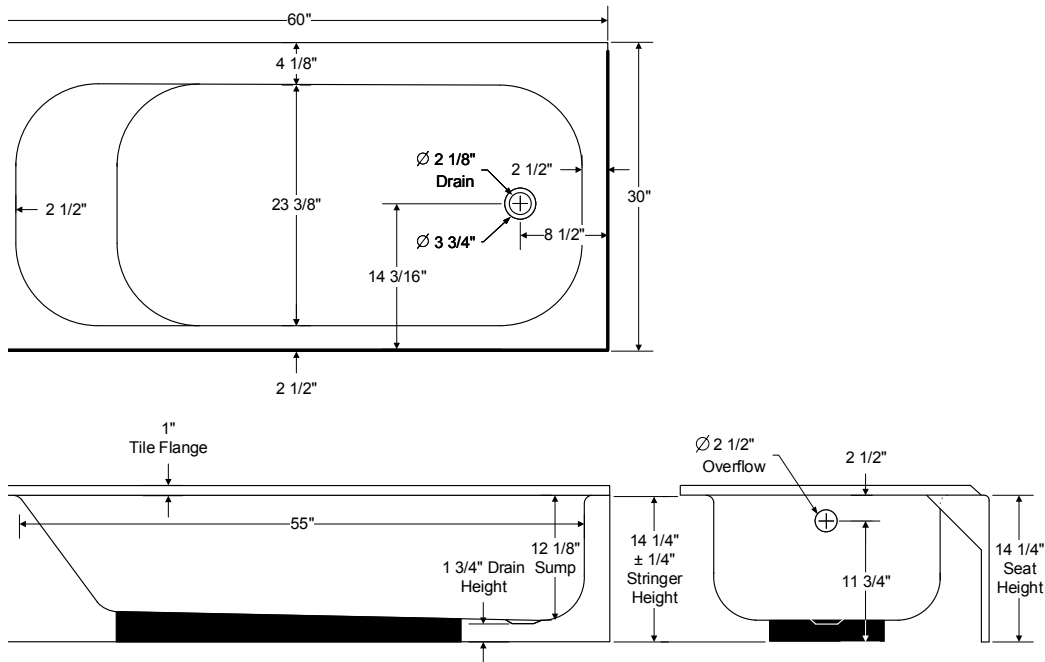
**MAAX**<sup>®</sup>  
Enjoy the experience



# PRO STEEL 6030

## LEFT-HAND DRAIN BATHTUB

60 x 30 x 14 1/4 inches



### SPECIFICATIONS

Model # LOW-3365-00

Material	Porcelain Enameled Steel
Water Capacity	33.3 gal
Drain Location	Left
Deck Width	30"
Bathing Well	55 1/2" x 23 3/8"
Product Weight	64lbs (29 kg)
Warranty	1 year

Available at

