

HI-SPEED USB TO SATA/IDE ADAPTER USER MANUAL

MODEL 179195



manhattanproducts.com

MAN-179195-UM-0914-10

INTRODUCTION

Thank you for purchasing the Manhattan® Hi-Speed USB to SATA/IDE Adapter, Model 179195.

This convenient device connects SATA, SATA-enhanced, IDE and enhanced-IDE hard disks to desktop and notebook computers using a USB port. And with its convenient built-in, one-touch copy feature, you can more easily transfer, share and back up files or store large file archives on external drives.

By following the instructions in this user manual, you'll soon be enjoying these popular features:

- Supports data transfer SATA speeds up to 1.5 Gbps and Hi-Speed USB speeds up to 480 Mbps
- Supports 48-bit LBA (Logical Block Addressing)
- Fits external SATA and IDE hard drives up to 5.25"
- Plug and play – Windows, Mac and Linux compatible and hot-swappable
- Lifetime Warranty (For a complete list of country-specific warranties, go to manhattanproducts.com/warranty.)

System Requirements

- Available USB type-A port
- Windows XP/Vista/7/8

Package Contents

- Hi-Speed USB to SATA/IDE Adapter
- USB cable, 80 cm (31.5 in.)
- 4-pin power cable, 10 cm (4 in.)
- Power adapter, 1.5 m (59 in.)
- Software CD with user manual; multilanguage quick install guide



HARDWARE INSTALLATION

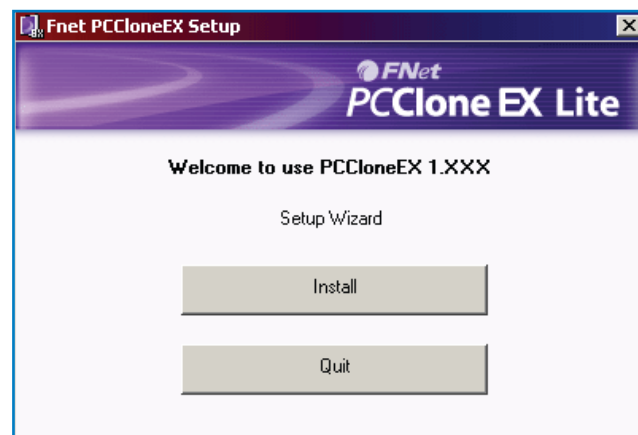
1. Always connect the Hi-Speed USB to SATA/IDE Adapter to the HDD port first, then to the computer's USB port. **NOTE:** If using the included 4-pin internal power cable instead, turn off the PC before connecting. Windows will detect a new device and automatically install the driver.
2. To verify the connection, go to Start / Control Panel / Device Manager. Open "Hard disk controllers" to display the newly added hard disk drive.
3. If connecting to a new hard disk drive, use Device Manager or enter the command <diskpart> to initialize and set its capacity. Format the HDD using standard procedures. If its icon appears on the desktop but you can't find it listed, check the following:
 - The HDD has been properly installed; and
 - The HDD is set in the Master position.

SOFTWARE INSTALLATION

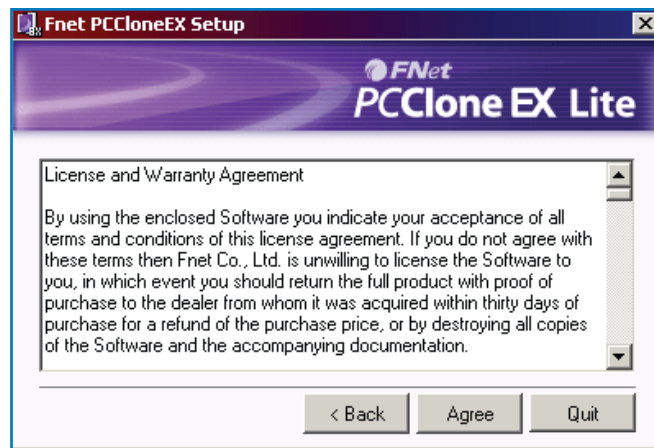
These steps are for the installation of the convenient one-touch backup software.

NOTE: *This software doesn't support Mac operating systems.* Some images may look different on your computer, as your software version may be slightly different than the one represented here.

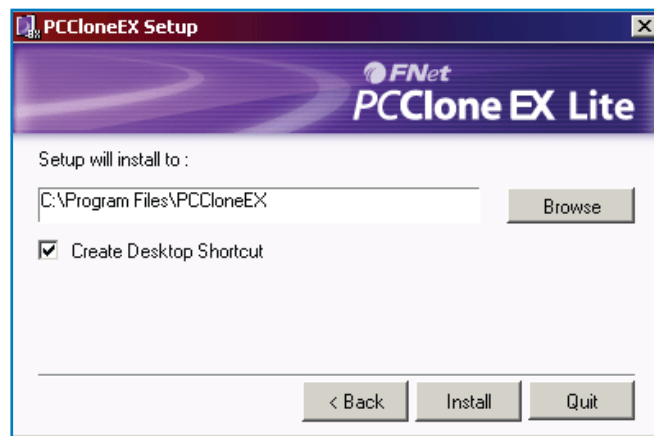
1. Load the included software CD. The PC Clone EX setup wizard's Welcome screen will display automatically. Click "Install" to continue.



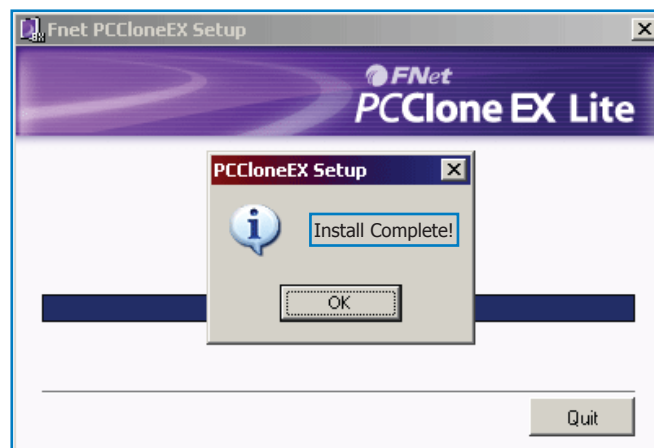
2. When the License and Warranty Agreement displays, click “Agree” to continue.



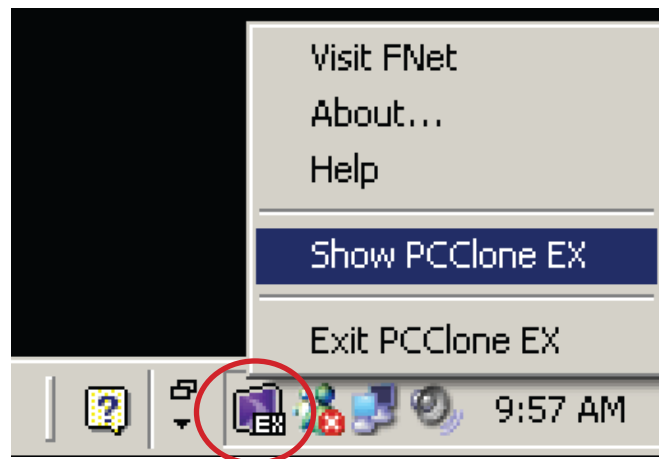
3. Enter the desired pathway for the installation or click “Browse” to find a current folder. Click “Install” to continue.



4. The final Setup screen will display a progress status bar. When finished, the wizard will display an “Install complete!” message. Click “OK” to exit the wizard.



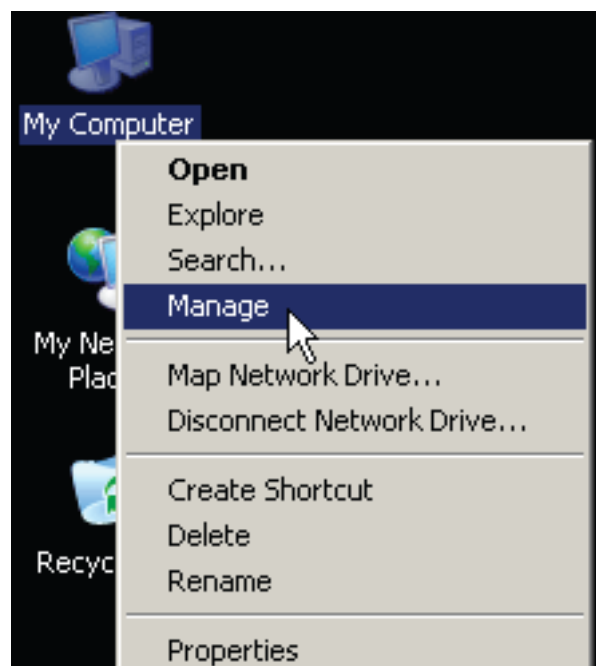
5. The PC Clone EX icon will appear in the system tray. To open the program, you can double-click the icon or right-click to display the menu option for selection.



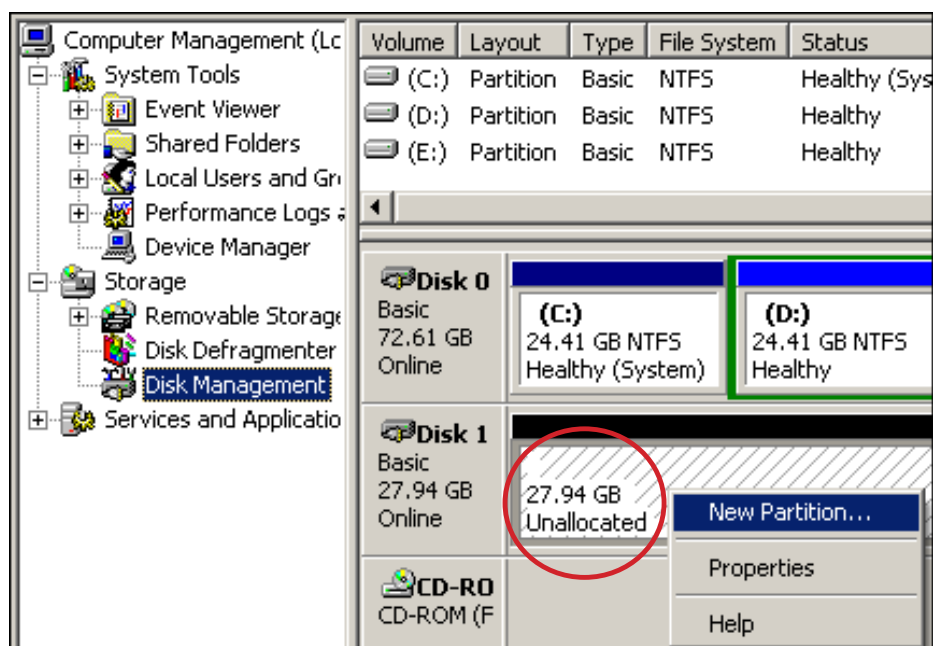
CREATING PARTITIONS

NOTE: If the hard drive you have placed in the enclosure (the drive that you are copying data to) has already been partitioned, you can proceed to the next section.

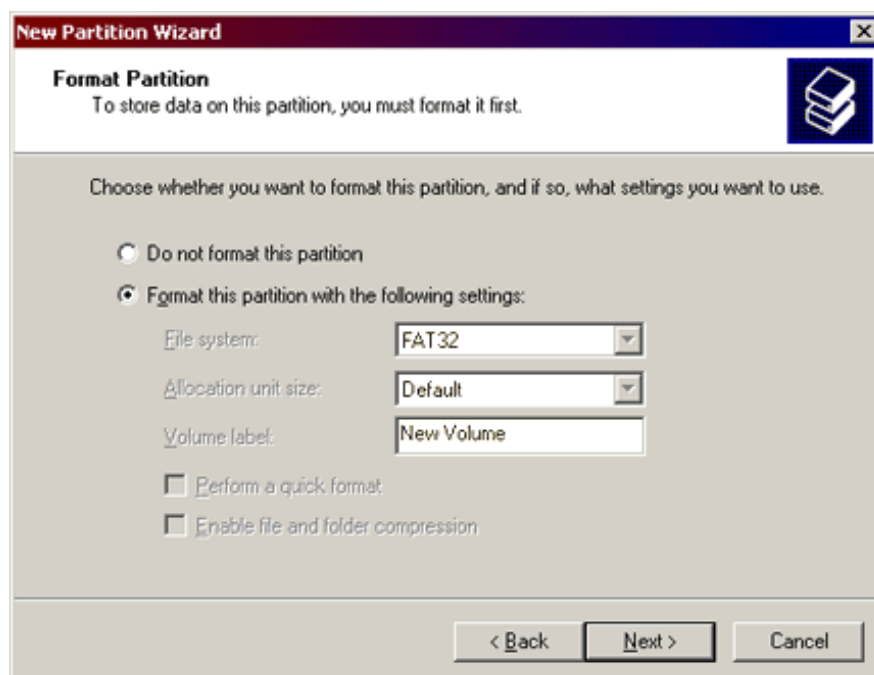
1. With the adapter plugged into a USB port on your computer and powered on (see Hardware Installation above), right-click My Computer on your desktop and go to Manage. (Or go to Start / Control Panel / Administrative Tools / Computer Management.)



2. In the left-hand file directory, click/select “Disk Management” so its screen displays on the right. Right-click on the disk identified as “Unallocated,” then click/select “New Partition...” from the pop-up menu. **NOTE:** To confirm that the drive you’ve placed in the enclosure is indeed the unallocated disk, disconnect the USB cable and see if the corresponding “Unallocated” text disappears.



3. With the Format Partition screen displayed, select your preferred settings, then click “Next” to continue.



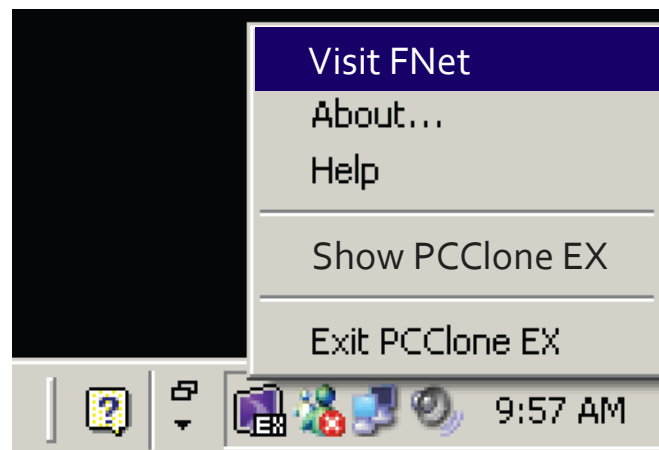
OPTION: An alternative pathway for accessing the formatting options is through Start on your desktop, then All Programs / PCCloneEX / FNet FAT32 Format. The formatting details and instructions will appear on the screens that display.



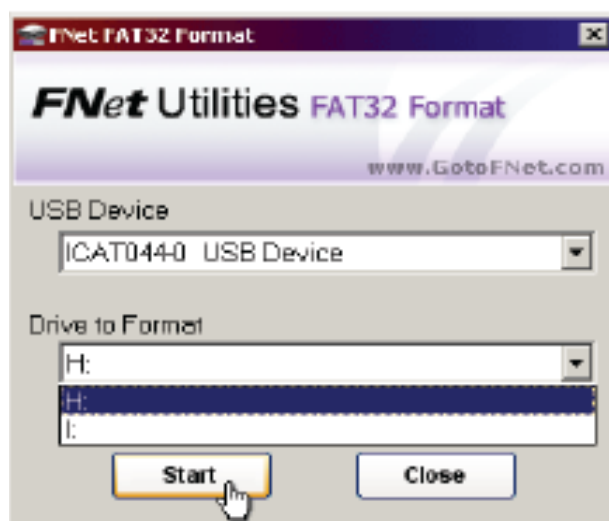
FAT32 FORMAT UTILITY

With the increases in drive capacities, the FAT32 Format Utility in older operating systems is unable to support data transfers in excess of 32 GB. The solution is to use the FNet formatting utility on the enclosed CD, which can quickly format a disk for as much as 4 TB (4,000 GB). Note that all data already on the disk will be deleted.

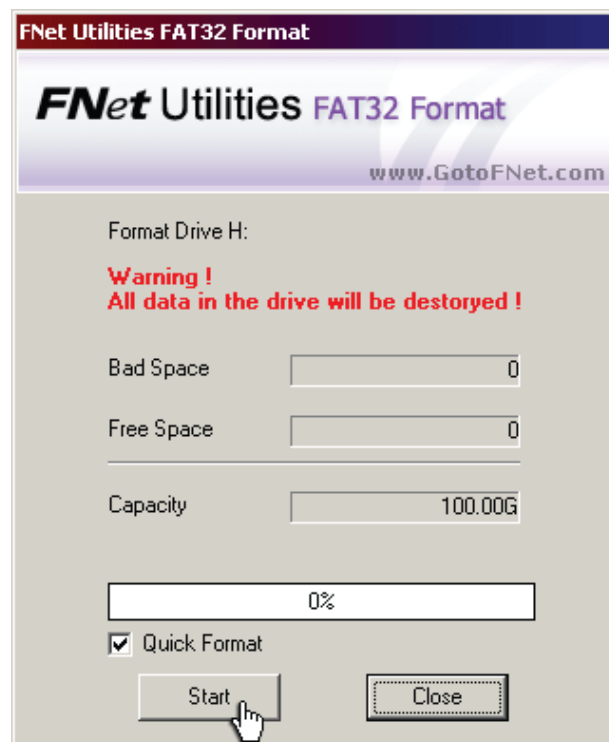
1. Connect the HDD to the adapter and turn on the computer.
2. Open PC Clone EX and select Visit FNet.



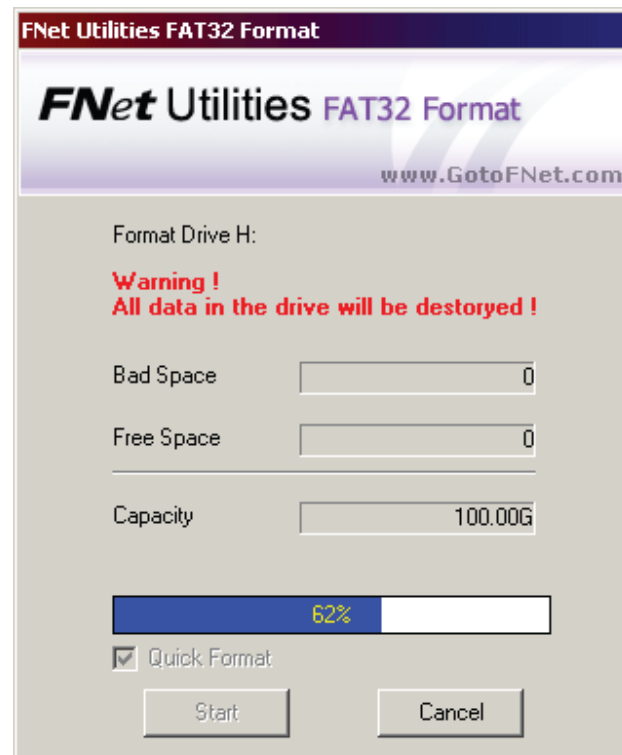
3. Confirm that the fields for USB Device and Drive to Format display your preferences and click **Start**.



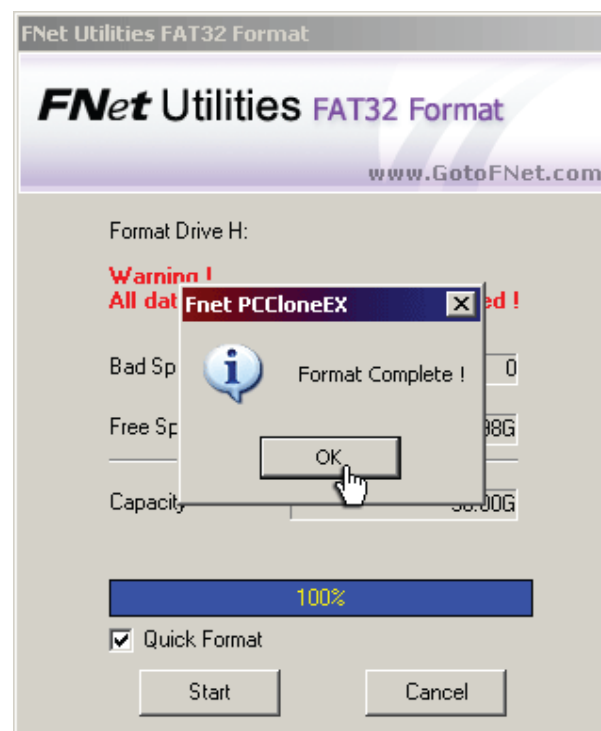
4. Select “Quick Format” and click **Start**. Remember, all data previously loaded on the receiving HDD will be deleted.



5. A Status screen will display the progress of the formatting.



6. When the Format Complete message displays, click **OK**. The selected disk has been formatted with the FAT32 file system.

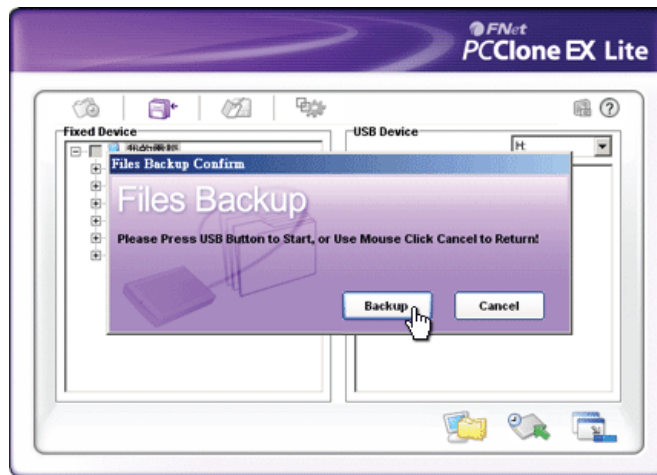


ONE-TOUCH BACKUP FUNCTION

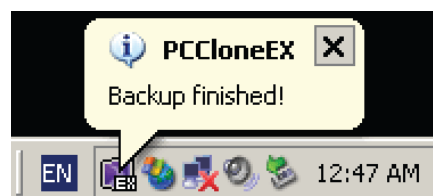
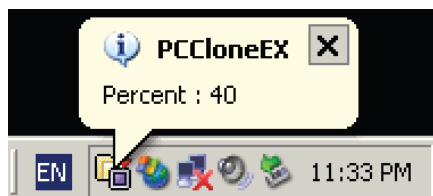
To use any of the features available with this function, be sure the adapter is plugged into a USB port on your computer and powered on, and that a backup drive has been properly loaded in the enclosure. **NOTE:** Before backing up files for the first time using this device, it's recommended that the function parameters be set on the File Backup Settings screen in the PC Clone EX program.



1. With the PC Clone EX program open and the disk connected to the adapter (see Hardware Installation above), press the Back Up button on the adapter.
2. A Files Backup Confirm screen will display. Click **Backup** to continue.



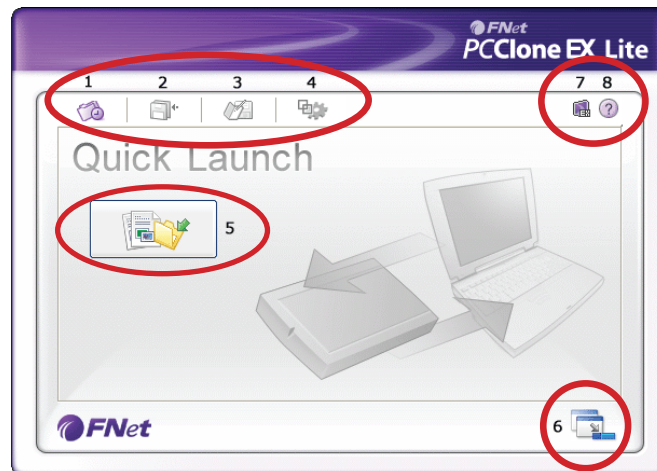
3. While the backup procedure is in progress, the PC Clone EX icon will flash in the system tray and a status update will display every 10 seconds until the backup is complete.



Quick Launch

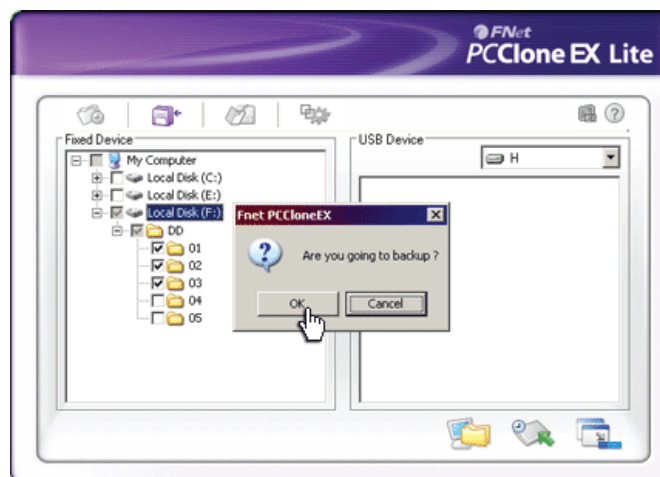
The Quick Launch screen displays automatically when the PC Clone EX program is opened. From here, you can directly execute the File Backup function by clicking on the boxed icon (5 in the image below) or select one of the other menu options:

- | | | | |
|----------------|----------------|---------------------|---------|
| 1 Quick Launch | 3 File Manager | 5 Quick File Backup | 7 About |
| 2 File Backup | 4 Setup | 6 Minimize | 8 Help |

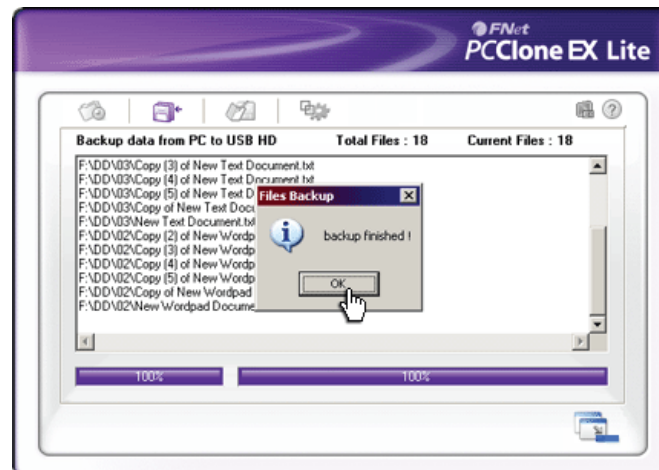


Quick File Backup

1. As mentioned above, you can click on the Quick File Backup icon (5) when you first open the program and are presented with the Quick Launch screen. **NOTE:** If using the backup function for the first time, you may want to first go to Setup to establish your preferred function parameters. Setup is where a hot key can be created for even quicker use of the backup function.
2. With your files selected for backup, click **OK** when prompted.

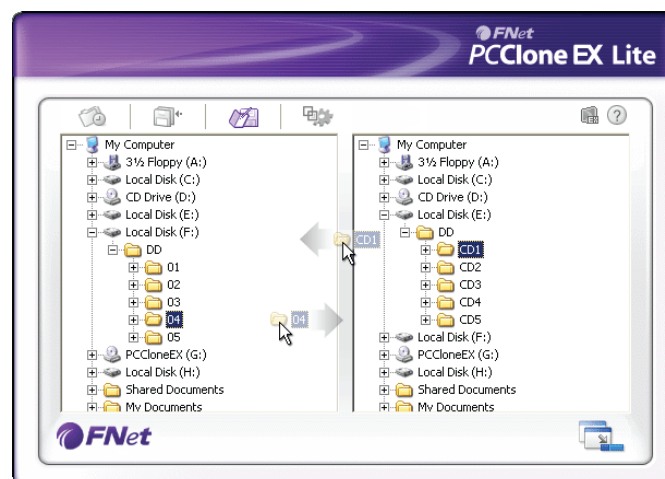


3. When the file backup begins, a status bar displays to indicate the progress of the procedure. When the “Backup finished!” prompt displays, click “OK.”



File Manager

Managing files in PC Clone EX is just like managing files in Windows Explorer. Just drag files between the fixed device and the drive attached to the adapter.

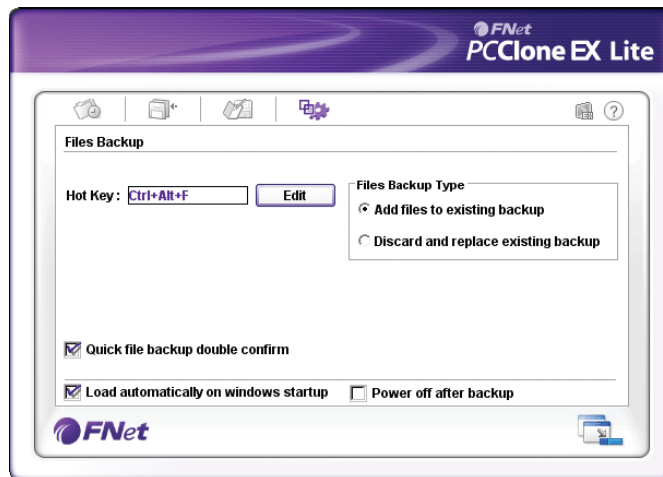


Setup

You can select your preferences on this screen before you begin backing up files. Options include creating a hotkey: a single command used to initiate the backup function.

Hotkeys

Click **Edit** and enter any combination of keys (using Control and/or Shift and/or Alt keys plus any number, letter or function key) in the text field to the left.



Files Backup Type

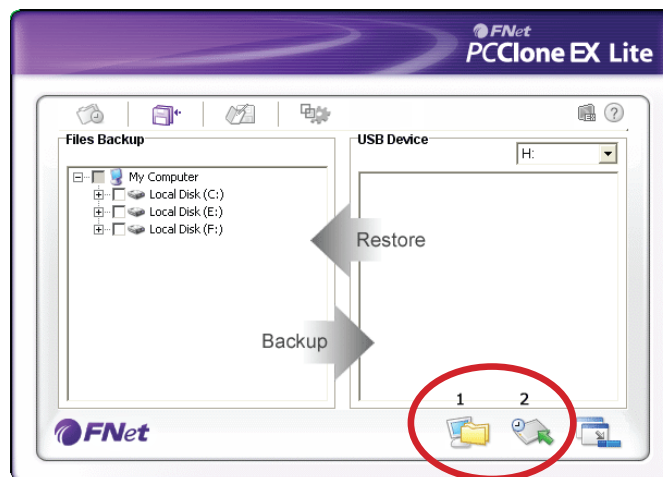
Select “Add files to existing backup” to back up additional files; select “Discard and replace existing backup” to completely re-copy selected files.

Other

You can select “Quick file backup double confirm” so that a confirmation box will display whenever you use a hot key to initiate a backup. (This is enabled by default.) The other on-screen Setup options are self-explanatory.

File Backup

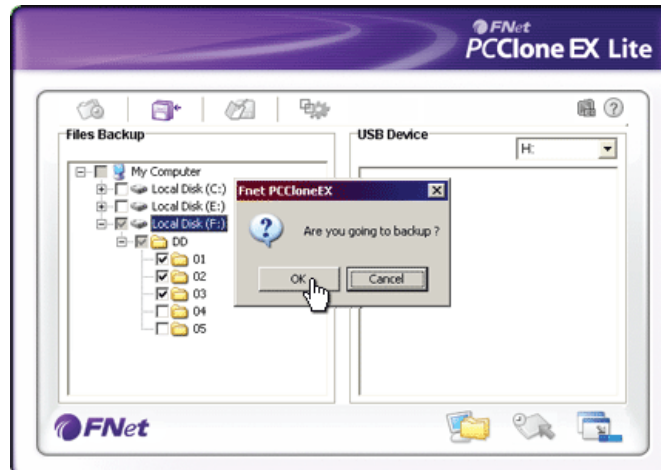
If you’re navigating back from another menu screen and want to proceed with a file backup, click on the File Backup icon. This screen lets you do a backup or restore.



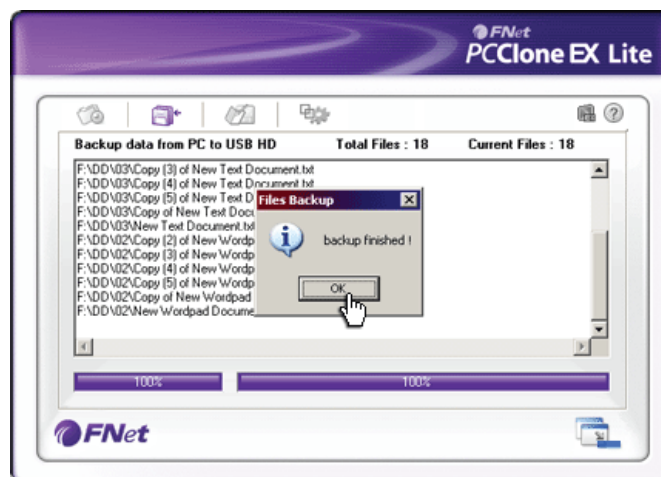
Backing Up Files

1. In the left-hand (Files Backup) window, select the folders/drives to be copied from the source device. Click the File Backup icon (1) to continue.

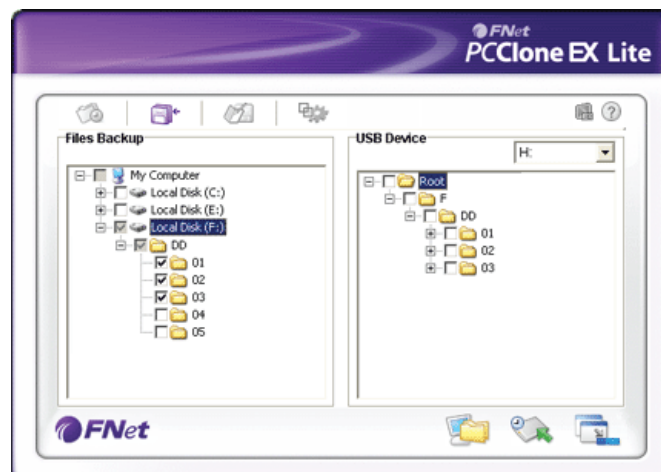
2. With your files selected for backup, click **OK** when prompted.



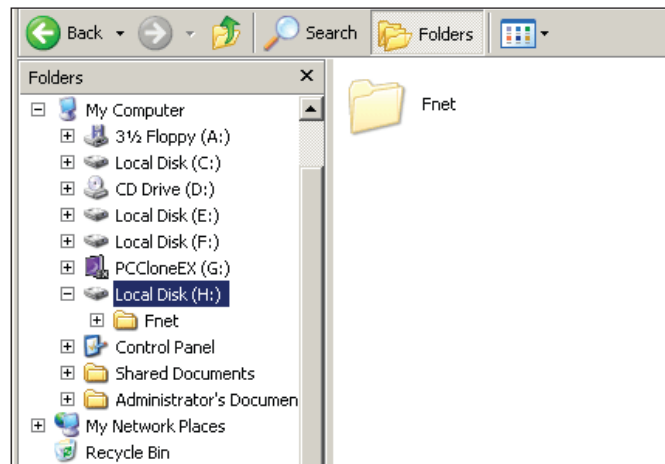
3. When the file backup begins, a status bar displays to indicate the progress of the procedure. When the “Backup finished!” prompt displays, click “OK.”



4. Confirm that the selected items now appear in the right-hand (USB Device) window.

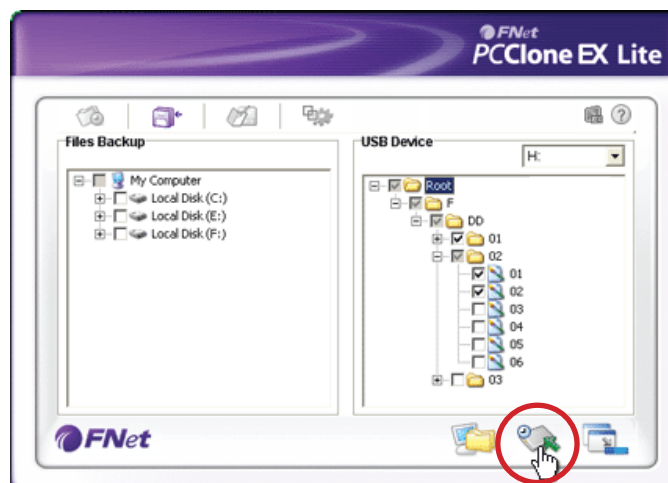


IMPORTANT: A root directory (FNet) folder will display in the USB Device window. This is where all the backed-up files are stored, so be careful not to delete it unintentionally.

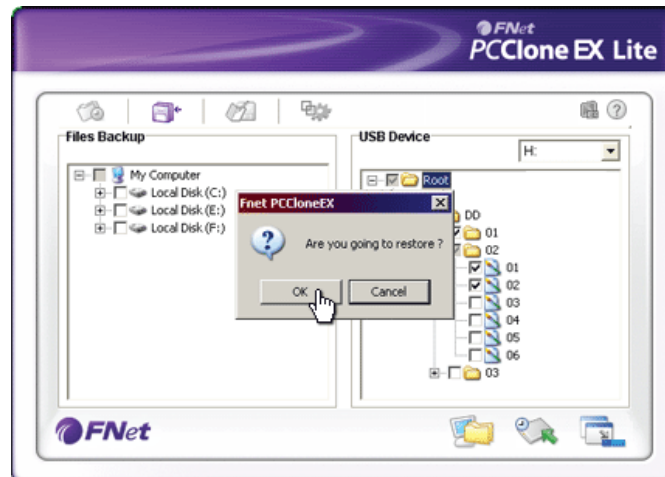


Restoring Files

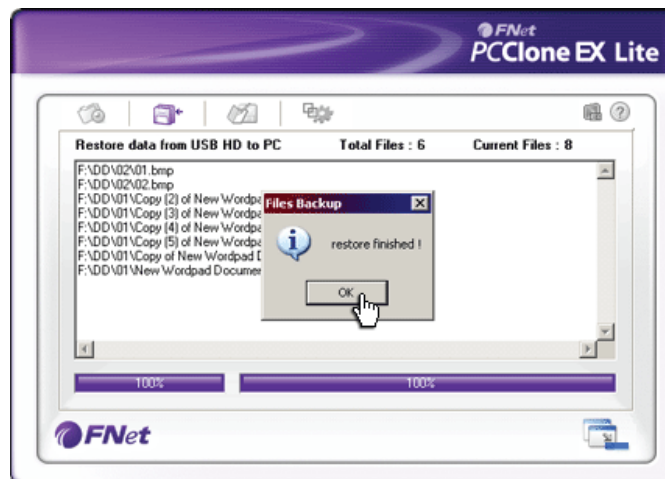
1. In the event you need to copy files from the backup drive to the original source device (to replace lost or damaged originals, for example), select the items in the right-hand (USB Device) window and click the Restore icon (2).



2. When the “Are you going to restore?” prompt displays, click **OK**.

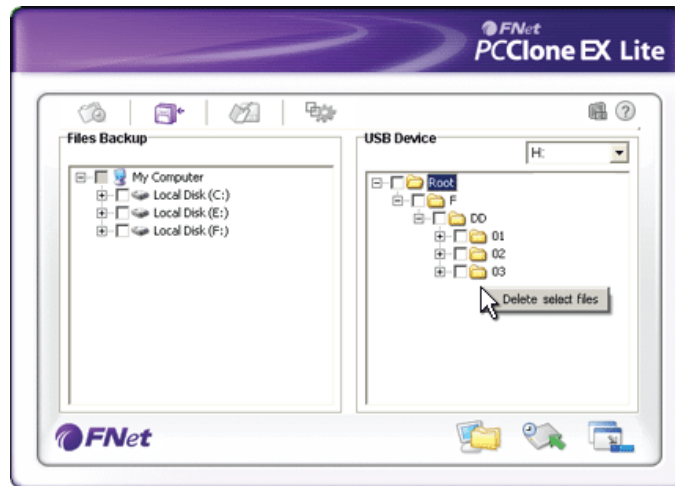


3. When the “Restore Finished!” message displays, click **OK**. The selected items will appear in the left-hand (File Backup) window.



Deleting Files

1. Select a file (or files) you want to delete in the USB Device window.
2. Right-click your mouse to display the “Delete select files” option. Select this option, and all highlighted files will be removed.



OPTION: To remove all files that have been backed up, you can simply select the root directory (FNet) folder, then right-click for the delete option.

SPECIFICATIONS

Standards and Certifications

- USB 2.0
- USB 1.1
- Complies with ATA/ATAOI-100 spec v1.0 standards
- SATA 1.0
- FCC
- CE
- EuP
- WEEE

General

- USB 2.0 Standard-A male; SATA L-type male; IDE 40-pin; IDE 44-pin ports
- Hi-Speed USB transfer interface
- 480 Mbps maximum transfer rate
- Supports SATA, enhanced-SATA, IDE and enhanced-IDE drives

Power Supply

- Input: 100 – 240 VAC; 50/60 Hz maximum 0.8 A
- Output: 12 V / 2 A
- Cable: 1.5 m (59 in.)

Physical

- 9.8 x 7 x 1.8 cm (3.8 x 2.75 x 0.7 in.)
- Cables: USB, 80 cm (31.5 in.); 4-pin power, 10 cm (4 in.)
- Weight: 270 g (9.5 oz.)

System Requirements

- Available USB type-A port
- Windows XP/Vista/7/8

Package Contents

- Hi-Speed USB to SATA/IDE Adapter
- Software CD with user manual; multilanguage quick install guide

© IC Intracom. All rights reserved.
Manhattan is a trademark of IC Intracom, registered in the U.S. and other countries.