

### Features

- Catalyzed conversion varnish provides a durable moisture-resistant finish.
- One door and three drawers on right.
- Frameless construction with full-overlay door and drawers.
- Three-way adjustable slow-close door hinges for easy cabinet access.
- Full-extension 18" (457 mm) depth drawers with soft-close undermount slides for smooth opening.
- Solid wood drawers with dovetail construction.
- Legs offer the polished look of furniture in the bathroom.
- Coordinates with the K-99686 Damask knob and K-99689 Damask handle (sold separately).
- Combines with Ceramic/Impressions®, Solid/Expressions®, and Iron/Impressions® vanity tops (sold separately) for a complete vanity.
- Customize your storage with optional accessories such as shelves, trays, drawer dividers, and medicine cabinets (sold separately).

### Material

- Solid wood and veneers.
- Wood is a living material, and its beauty is enhanced by natural variations in grain, color, and pattern. No two pieces of wood are exactly the same, and the color will change with age, temperature, and exposure to light.
- The nature of wood grain can cause variations in stain depth. Our expert craftspeople hand-apply the stain to blend these variations.

### Required Products/Accessories

K-20000 20-1/4" rectangular undermount bathroom sink  
K-28250 Silestone® 37" quartz vanity top with rectangular cutout  
K-28263 Silestone® quartz 37" backsplash  
K-99686 Cabinet knob  
K-99689 3" cabinet pull

### Recommended Products/Accessories

K-23736 Furniture polish



### Codes/Standards

EPA TSCA Title VI  
CARB P2

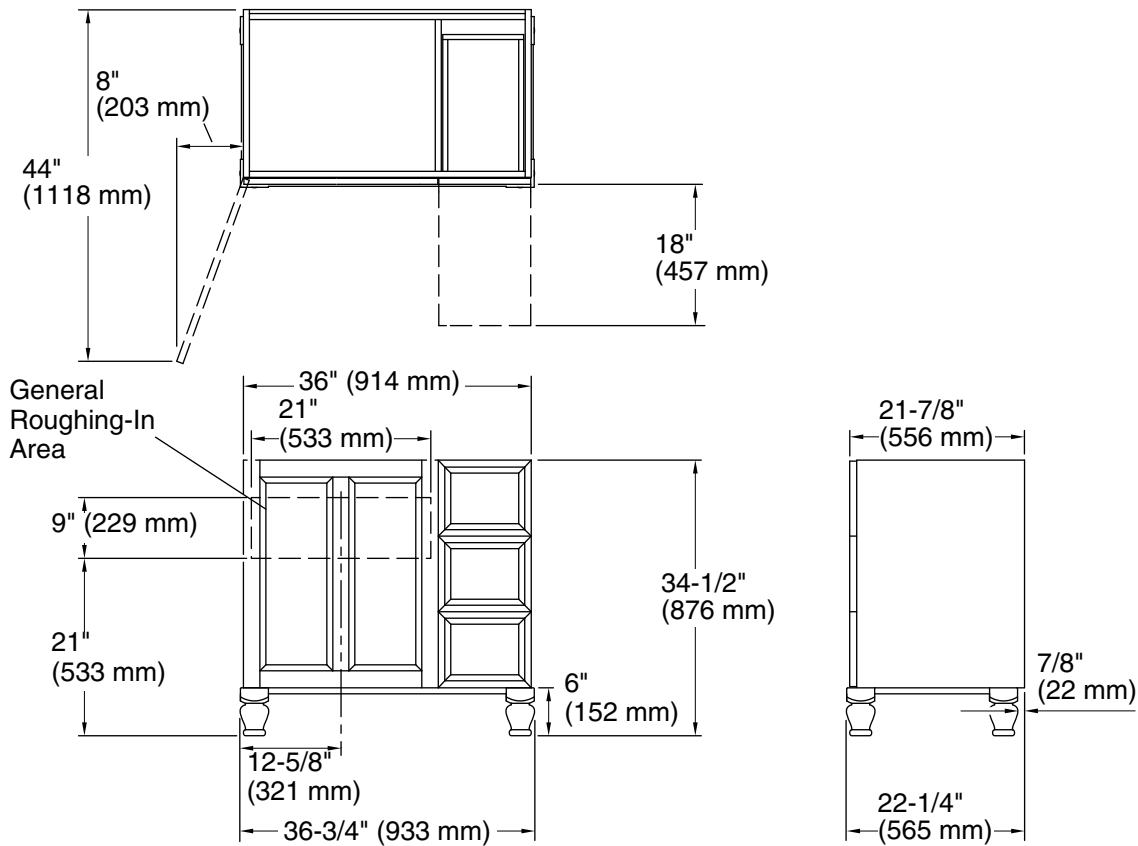
### KOHLER® One-Year Limited Warranty

See website for detailed warranty information.

### Available Colors/Finishes

*Color tiles intended for reference only.*

| Color   | Code | Description  |
|---|------|--------------|
|  | 1WA  | Linen White  |
|  | 1WB  | Claret Suede |
|  | 1WT  | Mohair Grey  |



## Technical Information

All product dimensions are nominal.

Vanity type: Standard

## Notes

Install this product according to the installation guide.

Decorative cabinet hardware is not supplied. Refer to the KOHLER bath accessories line for recommended cabinet hardware to complement your vanity.

Select the type of fastener based upon the wall material. Two 250 lb (113.4 kg) minimum load bearing fasteners are recommended.