

Pendant Light Fixture Installation Manual

Please read the instruction manual carefully before using.

Dear Customer;

All the lights were carefully inspected and tested before packing, but accidents may happen during loading, unloading or shipping. Please feel &ee to contact us if you have any questions about the products

If you would like to leave the using experience and pictures of the product, it will be of great help to other customers and us.
Thanks for choosing our products.

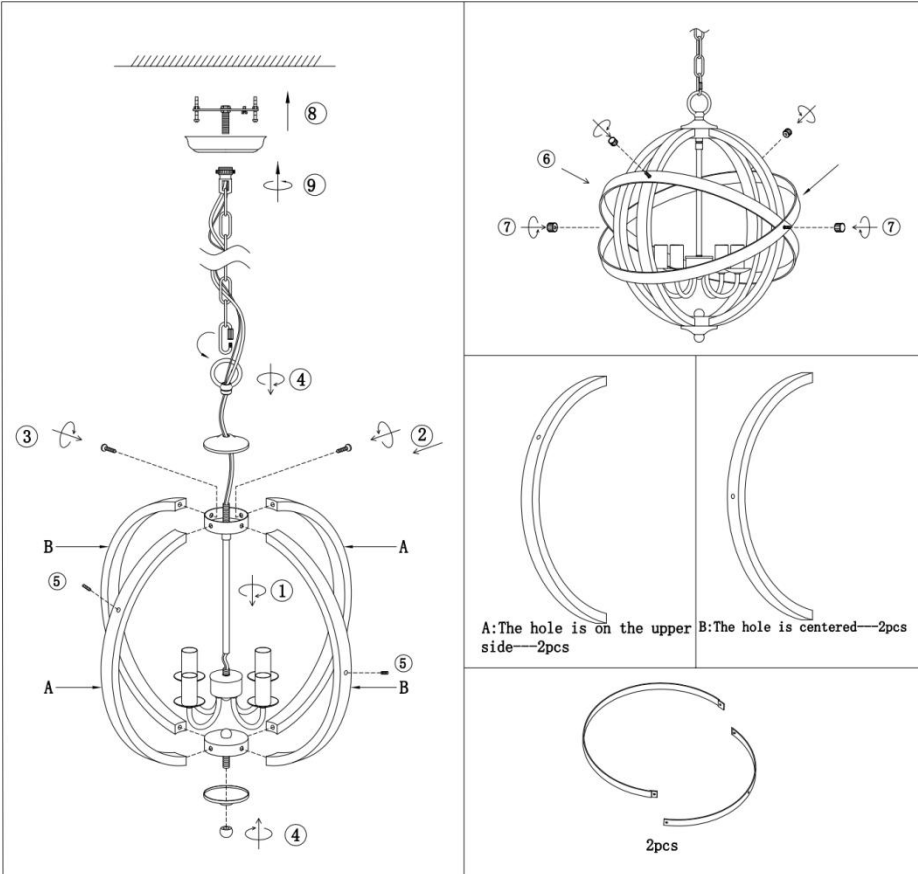
-Customer Service Centex

Specification			Package List	
Voltage	110-120V		curved wood	4
Bulb Socket	E12			
Wattage	4*40W		Iron ring	2
Bulb Type	Incandescent/LED/Halogen (Not Included)		lamp body	1
Certification	Socket is UL Listed		Pack of Hardware	1
Warranty	2 Years		Instruction	1

Installation

PS: There is a complete installation video on the product link page. It would be easier to assemble by referring to the installation video.

- ① Fix the main lever knob on the lamp holder.
- ② Fix the "A" curved wood to both ends of the round iron box.
- ③ Fix the "B" curved wood to both ends of the round iron box.
- ④ Use the lifting ring to fix the cover to the upper iron box, and use the ball nut to fix the cover to the lower iron box.
- ⑤ Screw the 1-inch (shorter) screw on the "A" wood bar and the 1.4-inch (longer) screw on the "B" wood bar.
- ⑥ Fix the iron ring on the screw just installed on the wooden bar.
- ⑦ Use the matching nut to tighten the iron ring.
- ⑧ Fix the bracket on the junction box, and then perform hard wiring, "L" is connected to the live wire, "N" is connected to the neutral wire, and the copper wire represents the ground wire, which can be connected to the ground wire at home or wrapped around the green screw on the bracket.



Q: The lamp does not work?

A: First, make sure your bulbs are working well.

If your bulbs work, but not on the lamp, please pull the copper piece which is located in the bulb socket. This operation is to ensure that the bulb makes good contact with the copper in the bulb socket.

- ⑨ Finally, Cover the box with the stand, then lift the light up and screw the nut on the hanger chain to the stand until it's tight.