



## DOUBLE SCREEN DOOR INSTALLATION INSTRUCTIONS

Required:

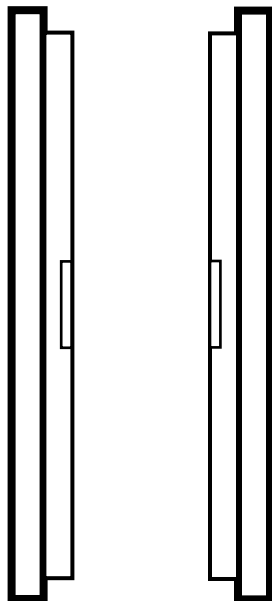


Cordless Drill



Step Stool (optional)

Included:



Two Housings w/  
mesh and pull bar



Top Track



Bottom Track



Optional Slide Lock w/ clip



#2 Square Head  
Self-Tapping  
Screws

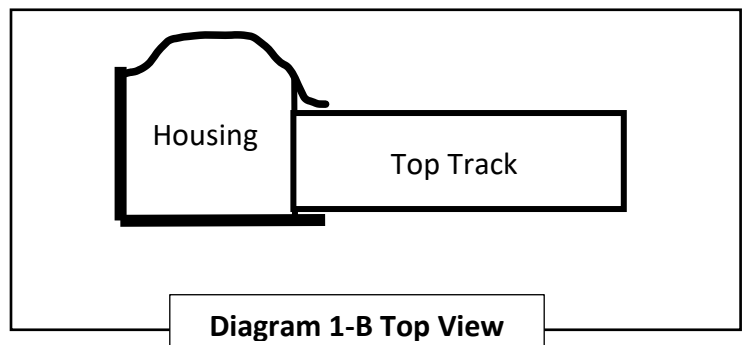
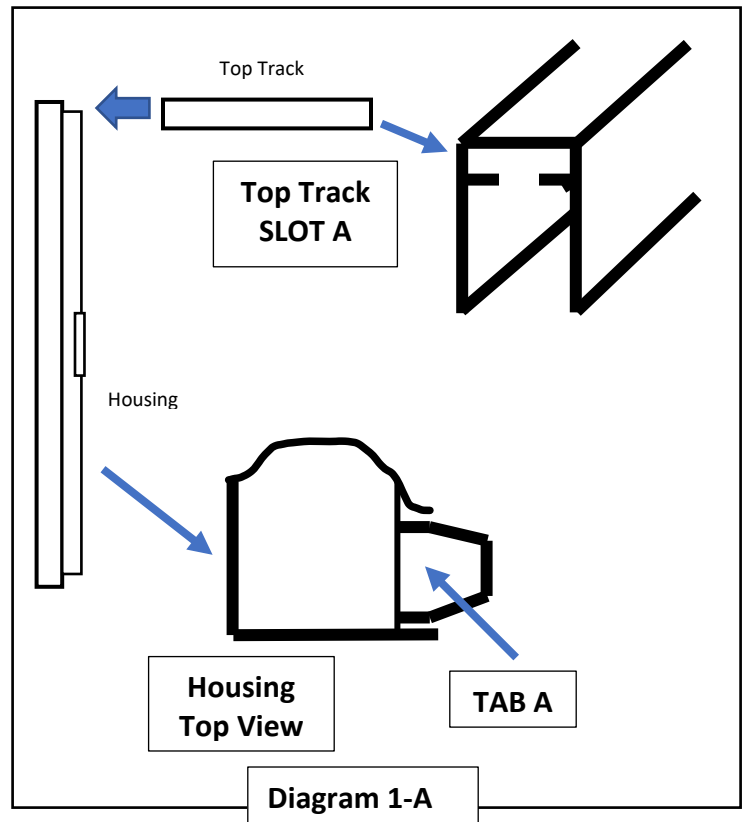
**DRILLBIT  
INCLUDED**



**STEP 1.** Place one Housing with Mesh into the left side of the door jamb against the flat surface at the point where it will be mounted. (Note: Each housing can be placed on either the right or left side of the opening. The rounded side of the housing should face towards you.) Insert the top track into the housing by sliding TAB A of the top cap of the housing into SLOT A on the top track (See Diagram 1-A). Be sure the tab is inserted completely, and the top track is  $\frac{1}{4}$ " into the opening of the housing. (See Diagram 1-B)

**STEP 2.** Once the top track is inserted into the housing, with the housing and top track securely in the door jamb, insert a screw through the top track with your drill. (Note the screws are self-tapping and will drive through top track). (See Diagram 3, next page) This will hold the unit in place as you move to the next step.

**STEP 3.** Insert the top track into the opposite housing by gently pulling the top track towards you and sliding the tab on the housing into the slot on the top track, the same as in Step 1. Once inserted, gently move the housing and top track back into the door jamb. (Note: If the housing feels unstable, have someone hold it in place while you move to the next step)

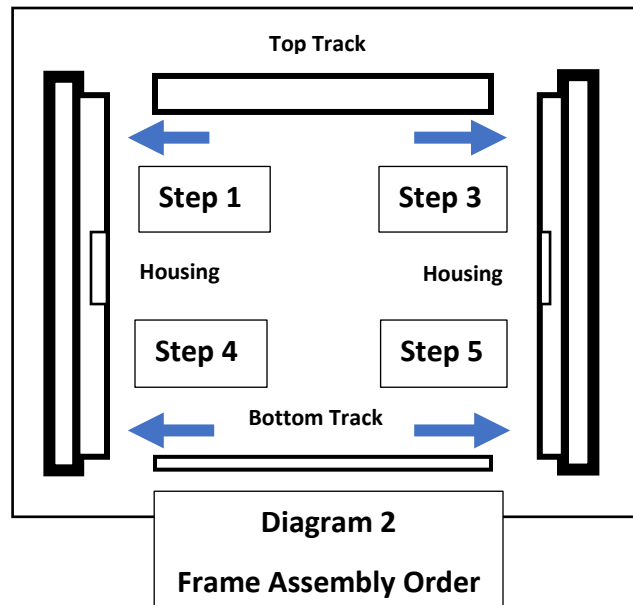


# CASPER

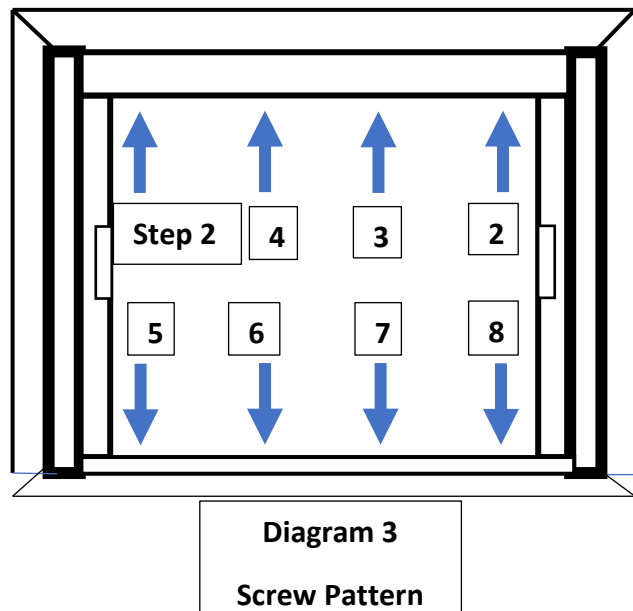
THE DISAPPEARING SCREENS

STEP 4. Insert the bottom track into the left housing by sliding the tab on the bottom cap of the housing into the slot on the bottom track, the same as you inserted the top track in Step 1.)

STEP 5. Insert the bottom track into the right housing by gently pulling the housing towards you and sliding the tab on the bottom cap of the housing into the slot on the bottom track, the same as in the previous steps. Gently move the bottom track and housing back into the door jamb making sure to align the frame where you will ultimately mount.



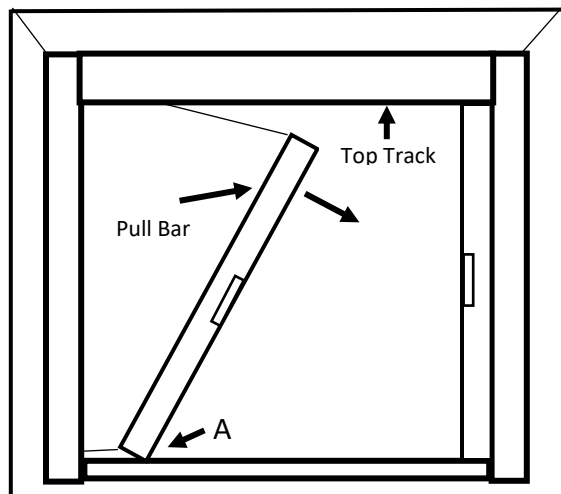
STEP 6. Now that the frame is assembled and aligned, begin installing the remaining screws according to the pattern shown in Diagram 3. Once complete, you are now ready to enjoy your Casper Disappearing Screen!



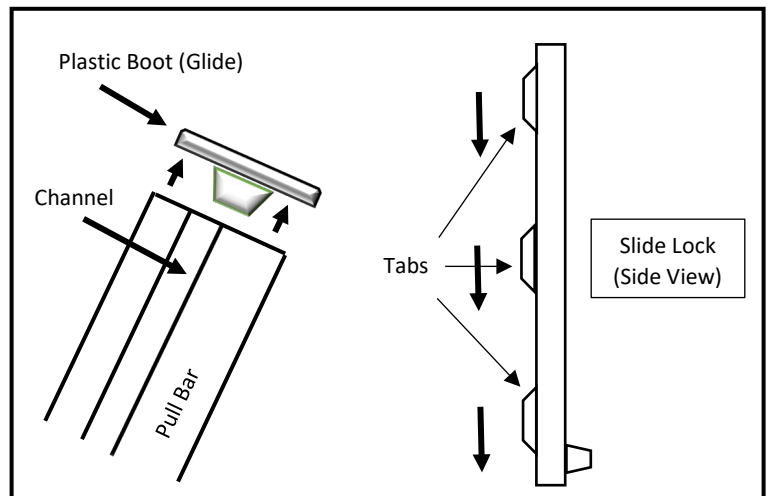
Please refer to our videos at [www.casperscreens.com/videos](http://www.casperscreens.com/videos) for more installation information.



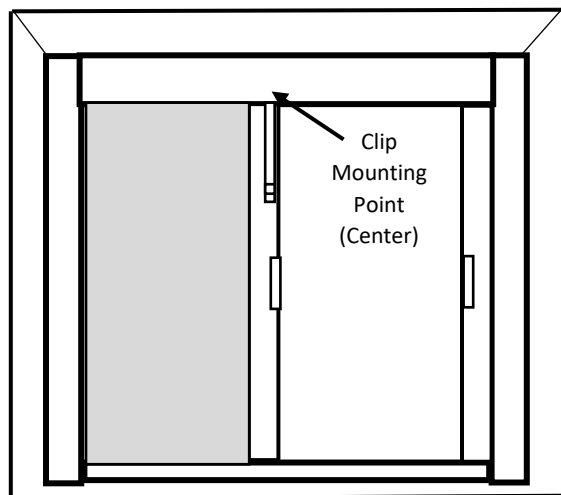
## SLIDE LOCK INSTALLATION INSTRUCTIONS



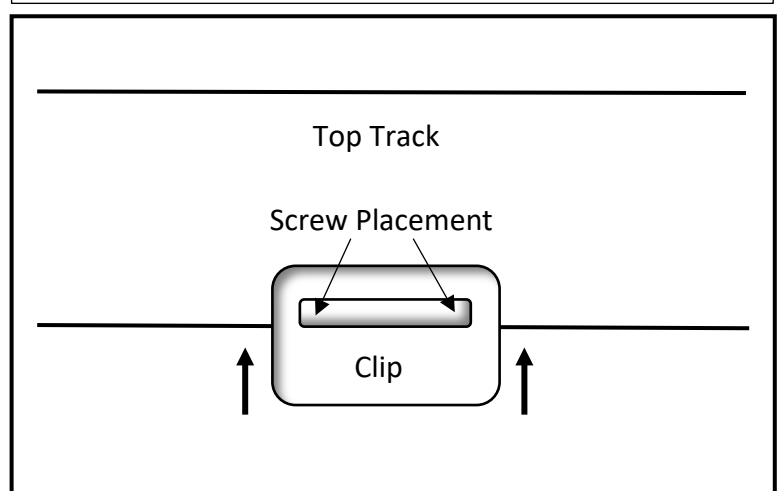
**Step 1.** Select the side of your double screen you would like to secure in place. With the screen retracted, angle the pull bar out of the top track by placing your foot on the bottom track at Point A and gently extending the top of the pull bar.



**Step 2.** With the pull bar out of the top track, remove the Plastic Boot (glide) from the top of the pull bar (Above left), to access the channel. Insert the slide lock into the channel using the Tabs on the slide lock. Be sure to guide each tab into the channel. It will be a snug fit but will loosen with use. Replace the plastic boot and return the pull bar back into the top track.



**Step 3.** Determine the point where you would like to secure the screen in place, usually the center, and mark the spot on the top track.



**Step 4.** Place the clip around the top track and using a drill, insert the screws through the clip into the top track. Move the slide lock you just installed on the pull bar, up into the clip. This will secure this side of the screen, allowing for easy pass through.