



Portfolio® is a registered trademark of LF, LLC. All Rights Reserved.

ITEM #0075297
0256494
0387262

SWAG LIGHT KIT

MODEL #978L
32L
LPSK6BRZ

Français p. 8
Español p. 15



ATTACH YOUR RECEIPT HERE

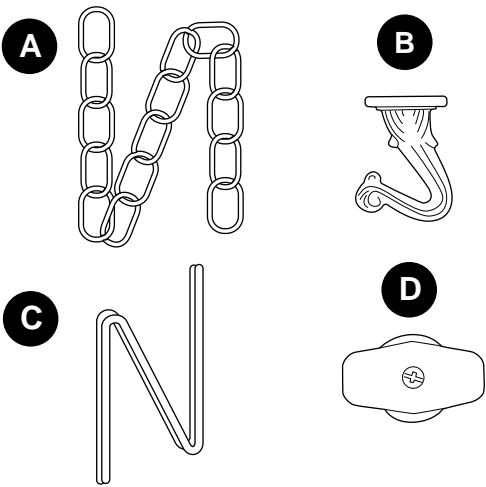
Serial Number _____ Purchase Date _____



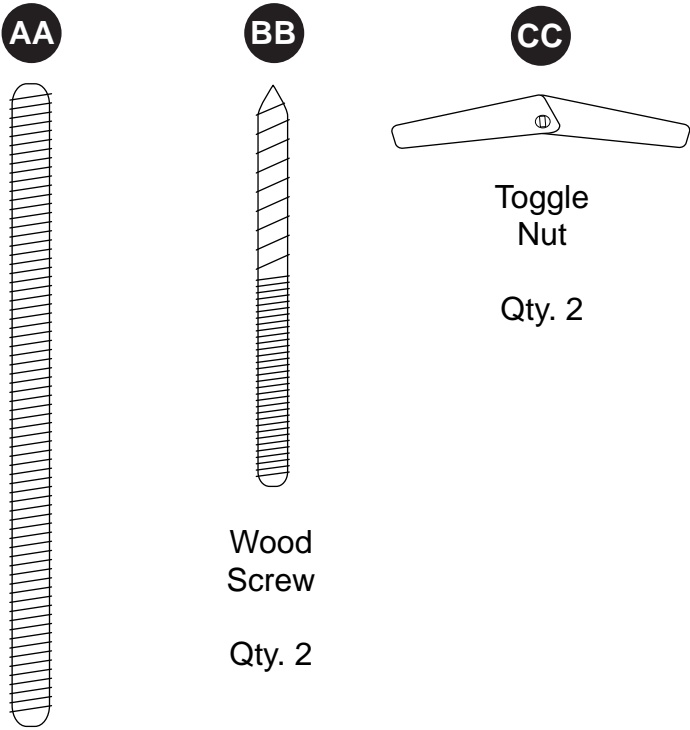
Questions, problems, missing parts? Before returning to your retailer, call our customer service department at **1-800-643-0067**, 8 a.m. - 6 p.m., EST, Monday - Thursday, 8 a.m. - 5 p.m., EST, Friday.

PACKAGE CONTENTS

PART	DESCRIPTION	QUANTITY
A	Chain	1
B	Hook	2
C	Wire	1
D	Cord Switch	1



HARDWARE CONTENTS (shown actual size)



Toggle
Nut

Qty. 2

Wood
Screw

Qty. 2

Drywall
Screw

Qty. 2

SAFETY INFORMATION

READ AND SAVE THESE INSTRUCTIONS.

Please read and understand this entire manual before attempting to install the product.

DANGER

- DO NOT connect this accessory to an electrical system that does not provide a means for equipment grounding. Never use a accessory in a two-wire system that is not grounded. Installing an accessory into an electrical system not having a proper grounding means could cause metal parts of the accessory to carry electrical currents if any of the accessory wires, wire connections or splices were to become broken, cut or loose during the mounting or normal operation of the accessory. Under this condition, anyone coming in contact with the accessory would be subject to electrical shock, which could cause serious injury or death.

WARNING

- All electrical connections must be in agreement with local codes and ordinances, the National Electric Code (NEC) and ANSI/NFPA 70-1999. Contact your municipal building department to learn about your local codes, permits and/or inspections.
- To reduce the risk of electric shock, DO NOT use the product if power cord is frayed or broken.
- This accessory has a polarized plug (one blade is wider than the other) as a safety feature to reduce the risk of electric shock. This plug will fit in a polarized outlet only one way. If it does not fit fully in the outlet, reverse the plug. If it still does not fit, contact a qualified electrician. NEVER use with an extension cord unless the plug can be fully inserted. DO NOT alter the plug.
- ELECTRICAL PRODUCT. Keep away from children. Not recommended for children under the age of three (3). As with all electrical products, precautions should be observed during handling and use to reduce the risk of electric shock.
- To reduce the risk of burns, fire, electric shock or injury to persons, unplug from outlet before putting on or taking off parts.
- To reduce the risk of burns, fire, electric shock or injury to persons, DO NOT use the accessory if power supply cord or plug is damaged.
- DO NOT use staples or nails to secure wiring/power supply cord from light fixture; DO NOT place wiring/power supply cord on sharp hooks or nails.

CAUTION

- TURN OFF ELECTRICITY at main fuse box (or circuit breaker box) before beginning installation by removing the fuse (or switching the circuit breaker off).
- Weight capacity: 30 lbs (total).

PREPARATION

Before beginning assembly of product, make sure all parts are present. Compare parts with package contents list and hardware contents list. If any part is missing or damaged, do not attempt to assemble the product.

Estimated Assembly Time: 30 minutes

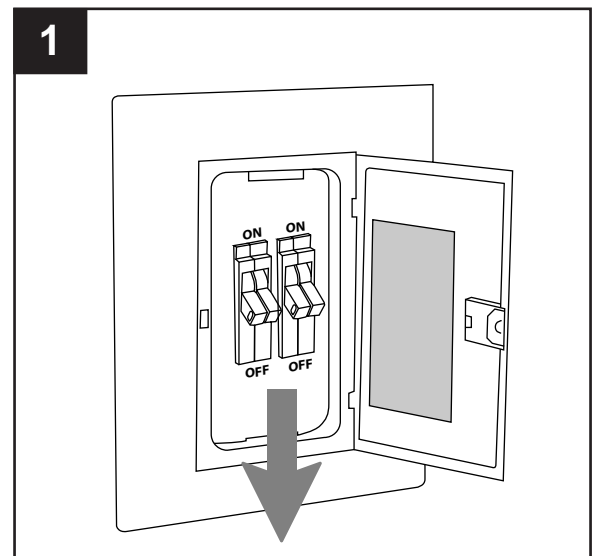
Tools Required for Assembly (not included): Flathead Screwdriver, Phillips Screwdriver, Wire Cutters, Safety Glasses, Stepladder, Drill, 1/2 in. Drill Bit, Pliers

Helpful Tools (not included): Soft Cloth

ASSEMBLY INSTRUCTIONS

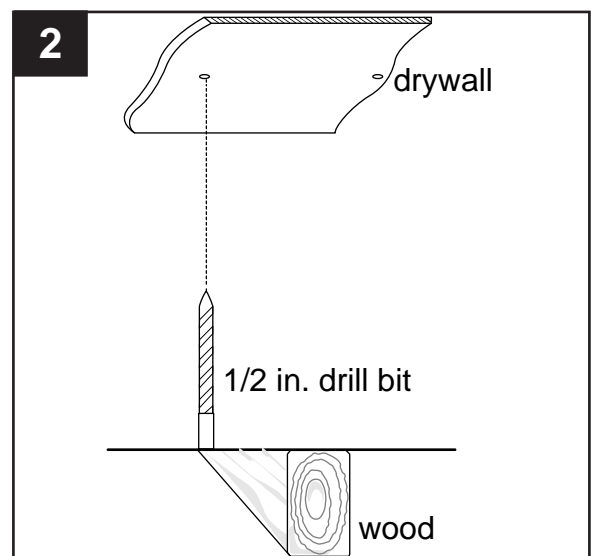
1. Turn off circuit breakers and wall switch to the fixture supply line leads.

⚠ DANGER: Failure to disconnect power supply prior to installation may result in serious injury or death.



2. Determine if ceiling is drywall or wood. If drywall, use a 1/2 in. drill bit (not included) to drill a pilot hole at approximate locations for each hook (B). Continue to step 3.

NOTE: If ceiling is wood, no pre-drilling is necessary. Proceed to Step 4.

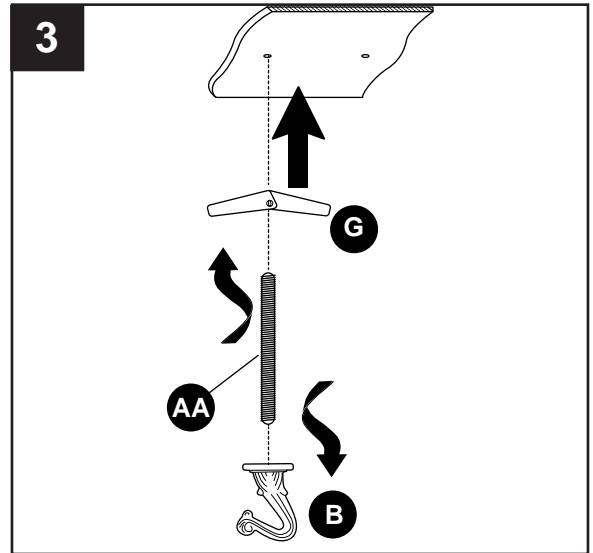


ASSEMBLY INSTRUCTIONS

3. **For drywall installation:** Screw the drywall screw (AA) completely into the hook (B). Partially screw the toggle nut (G) onto the drywall screw (AA), turning toggle nut (G) so ends of toggle nut (G) close against drywall screw (AA). Then insert toggle nut (G) into pre-drilled hole in the ceiling. Turn hook (B) until the base of the hook is flush against the ceiling. Skip to Step 5.

Hardware Used

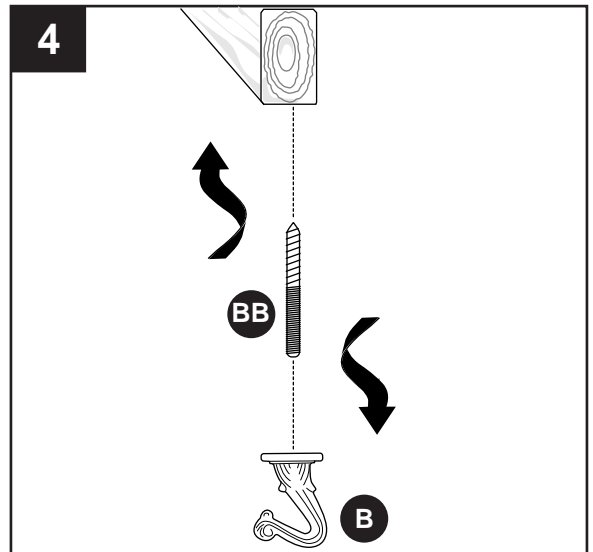
AA Drywall Screw  x 2



4. **For wood installation:** Screw the flat end of the wood screw (BB) into the hook (B). Insert the pointed end of the wood screw (BB) directly into the ceiling. Turn until the base of the hook (B) touches the ceiling.

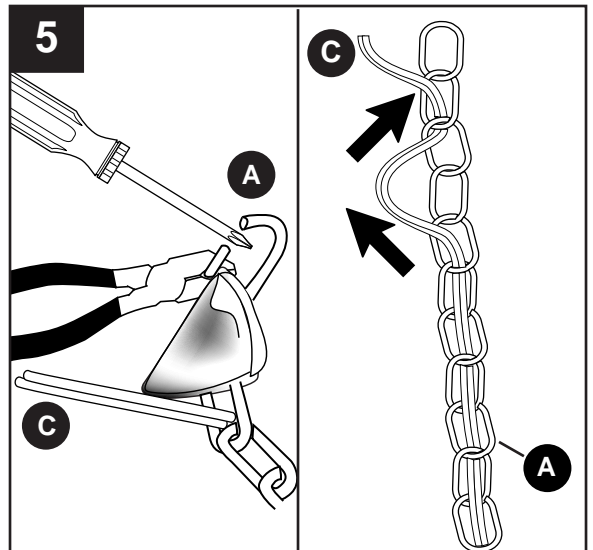
Hardware Used

BB Wood Screw  x 2



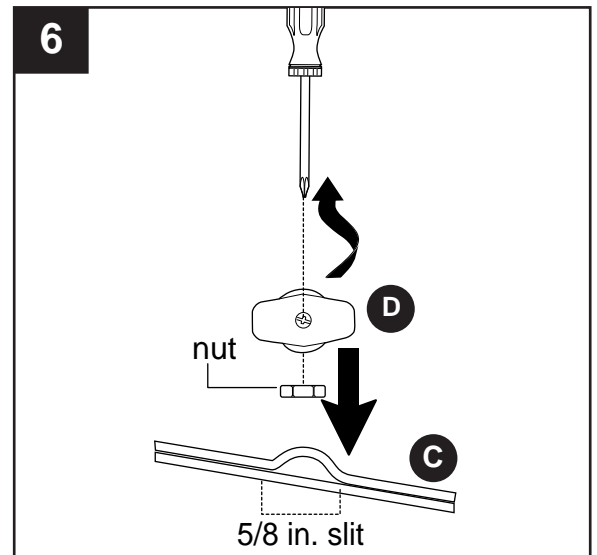
5. Determine the hanging length that is best for the fixture. Use pliers, a flathead screwdriver and a soft cloth (none included) to open the chain (A) link at chosen length. Remove any extra chain (A), then thread wire (C) through chain (A) to pre-determined length.

⚠ WARNING: Never drape an electric wire on the hook.

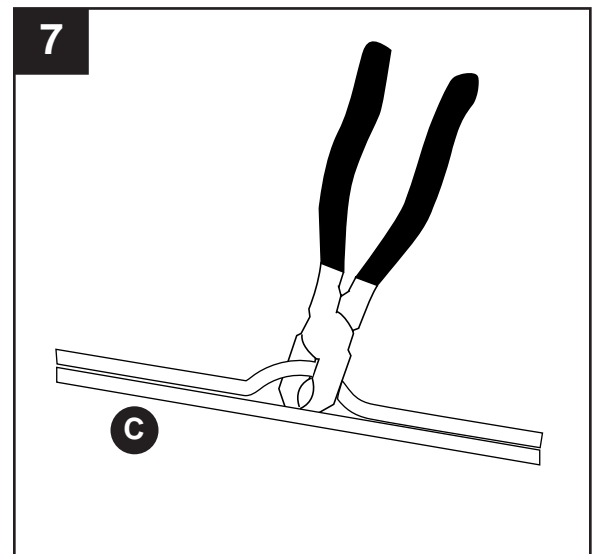


ASSEMBLY INSTRUCTIONS

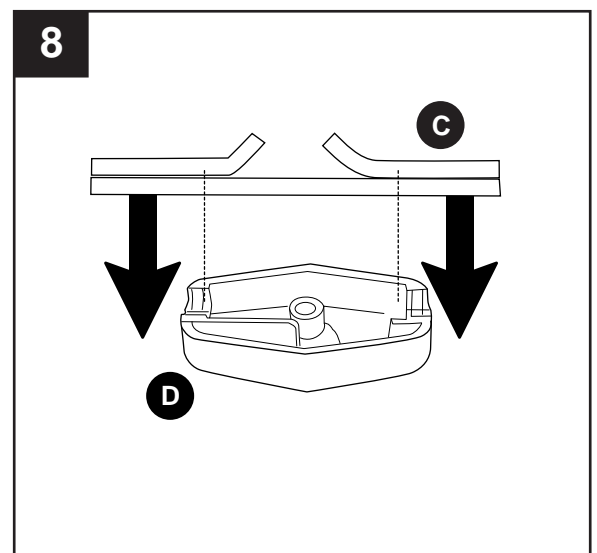
6. Remove preassembled nut on cord switch (D) by turning preassembled screw on opposite side counterclockwise. Gently pull on cord switch (D) to separate. Decide where to locate cord switch (D) on wire (C) and then separate the two conductors of the wire (C) by making a $\frac{5}{8}$ in. slit between the two conductors.



7. Take the non-ribbed conductor of the wire (C) and cut at the center of the slit with wire cutters (not included).

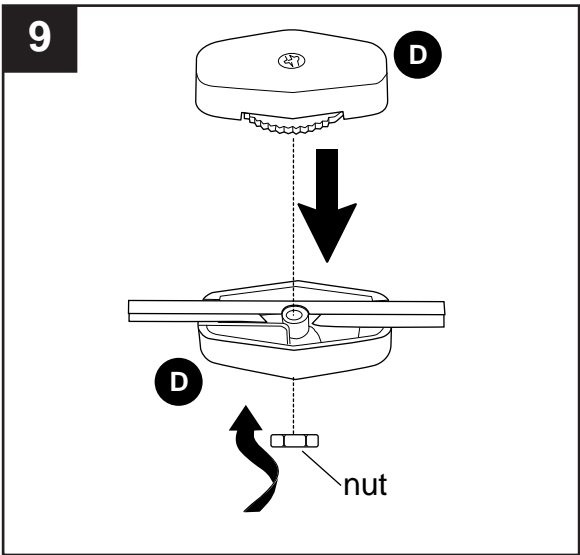


8. Press the cord into the hollow half of the cord switch (D), pushing the one cut end to the side channel of the cord switch (D) and holding the uncut wire in the channel.

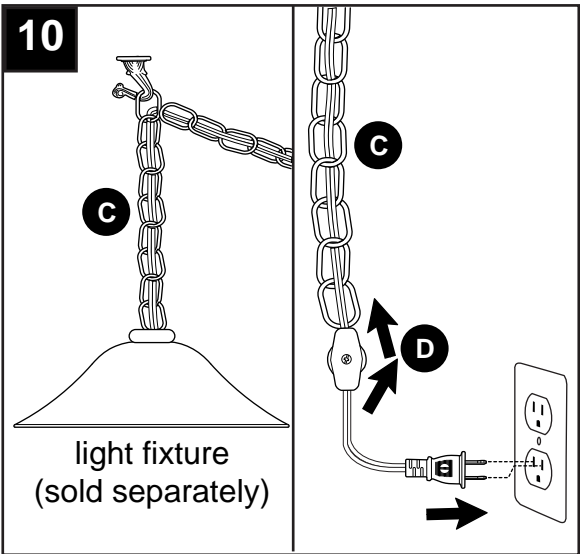


ASSEMBLY INSTRUCTIONS

9. Place the halves of the cord switch (D) together again, squeezing gently until they touch. Replace nut on cord switch (D) and tighten screw securely.



10. Connect wire (C) to a compatible light (sold separately) per the manufacturer's instructions. Then plug power cord on wire (C) into a wall outlet. **NOTE:** Use cord switch (D) to turn light fixture ON/OFF.



CARE AND MAINTENANCE

- Shut off main power supply. Wipe with soft cloth or use window cleaner. Do not use an abrasive cleaner.

TROUBLESHOOTING

! WARNING: Before beginning work, shut off the power supply to avoid electrical shock.

PROBLEM	POSSIBLE CAUSE	CORRECTIVE ACTION
Cord switch not working.	1. Bulb is burned out. 2. Power is OFF. 3. Faulty connection.	1. Replace light bulb. 2. Make sure power supply is ON. 3. Check wiring and all connections.

Printed In China

Portfolio® is a registered trademark of LF, LLC. All rights reserved.