

## OVERVIEW

Simply Conserve's field-adjustable troffers are designed for installation in T-bar grid or drop-in ceilings. They are the ideal solution for replacing inefficient traditional fluorescent troffers. They produce an even, bright light ideal for commercial settings including office buildings, schools, hospitals, and more. Their attractive design allows them to integrate seamlessly into any setting, offering high-quality, reliable lighting.

## KEY FEATURES

- Field-adjustable lumens and CCT
- Center basket design provides advanced light distribution with architectural styling
- Fits standard 1" "T-bar" grids
- L70-rated lifetime of 50,000 hours
- 0-10V dimmable
- High efficacy, excellent color rendering, and low glare

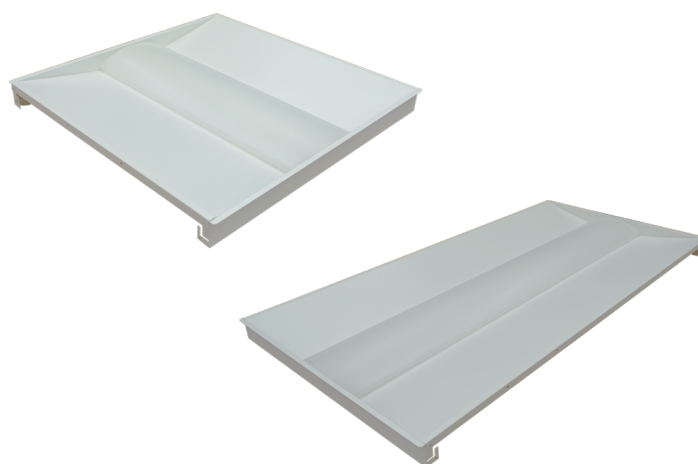
50,000  
HOURS

DIMMABLE

FIELD-  
ADJUSTABLEFLICKER-  
FREELED ADJUSTABLE  
TROFFER

**L20/30-TF22-35/50-D-ADJ,**  
**L34/45-TF24-35/50-D-ADJ**

Catalog #		Type
Project		
Comments		Date
Prepared by		



## ORDERING INFORMATION

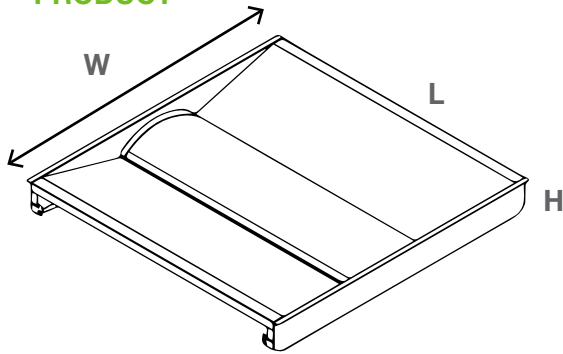
SOURCE	LAMP WATTAGE	LAMP TYPE	SIZE	CCT	OPTIONS
L = LED	20/30 = 20W, 25W, 30W	TF = Troffer	22 = 2' x 2'	35/50 = 3500K, 4000K, 5000K	D = 0-10V Dimming ADJ = Adjustable
	34/45 = 34W, 38W, 45W	TF = Troffer	24 = 2' x 4'		

## SPECIFICATIONS

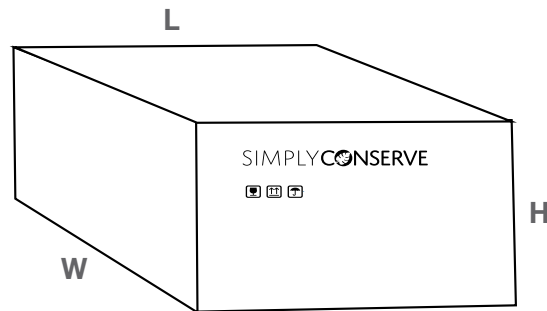
ITEM #	WATTS	CCT	LUMENS	EFFICACY	CRI	VOLTAGE	DIM
L20/30-TF22-35/50-D-ADJ	20/25/30	3500/4000/5000K	2500/3125/3750K	125 LPW	>80	120-277V	0-10V
L34/45-TF24-35/50-D-ADJ	34/38/45	3500/4000/5000K	4250/4750/5625K	125 LPW	>80	120-277V	0-10V

## DIMENSIONS

## PRODUCT



## CASE



CATALOG #	L	W	H
L20/30-TF22-35/50-D-ADJ	23.7"	23.7"	2.1"
L34/45-TF24-35/50-D-ADJ	47.8"	23.7"	2.1"

CATALOG #	L	W	H	CASE QTY	GROSS WT
L20/30-TF22-35/50-D-ADJ	24.4"	24.0"	4.92"	2	12.6 lbs
L34/45-TF24-35/50-D-ADJ	48.4"	24.0"	4.92"	2	24.3 lbs

## 5-Year Limited Warranty



AM Conservation ("AMC") warrants this product to be free from manufacturing defects for a period of five years from the date of consumer purchase or distribution by an energy conservation program, and has been properly installed, AMC will replace the LED adjustable troffer free of charge.

## For warranty claims, please contact:

customer@amconservationgroup.com

## To learn more, please visit:

www.amconservationgroup.com