



MANHATTAN COMFORT

NS014



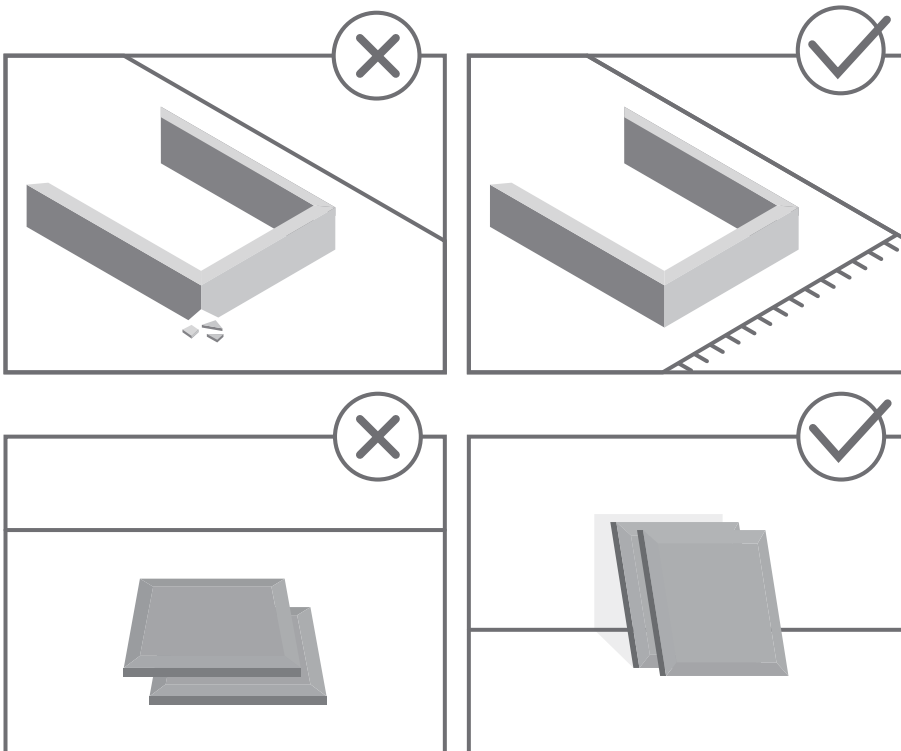


STOP!

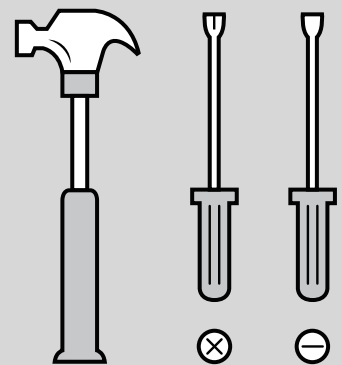
Before beginning the assembly process,
ensure all boxes and parts have been delivered.

FOR BEST RESULTS:

- Do not throw away packaging materials until assembly is complete.
- Assemble item on a soft surface, such as cardboard or carpet, to protect finish.
- Proper assembly requires two people.



TOOLS REQUIRED



View our assembly video online:
WWW.MANHATTANCOMFORT.COM



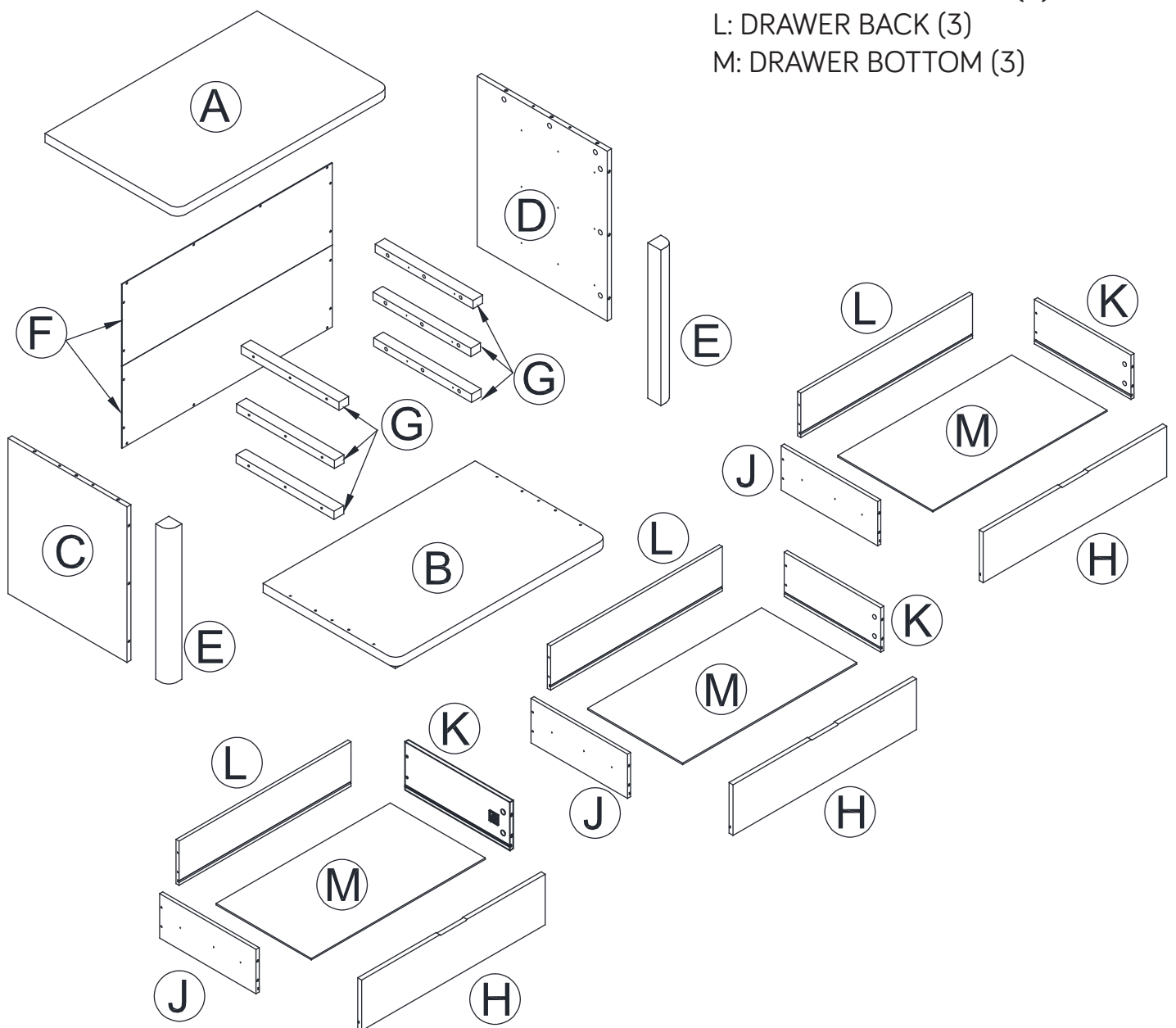
Stuck? Question? We are here to help.
tel: 908-888-0818
e-mail: help@manhattancomfort.com

Support Site



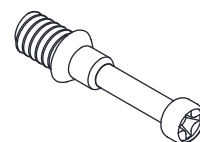
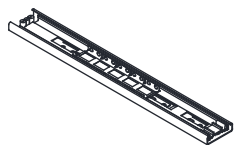
Included in this package:

- A: TOP (1)
- B: BOTTOM (1)
- C: LEFT END (1)
- D: RIGHT END (1)
- E: FRONT MOLDING (2)
- F: BACK BOARD (2)
- G: SUPPORTING RAIL (6)
- H: DRAWER FRONT (3)
- J: LEFT DRAWER SIDE (3)
- K: RIGHT DRAWER SIDE (3)
- L: DRAWER BACK (3)
- M: DRAWER BOTTOM (3)

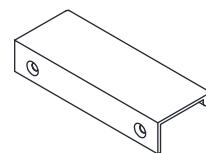
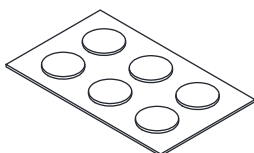
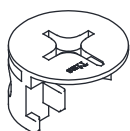


Hardware Identification

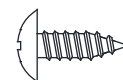
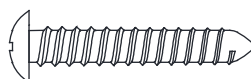
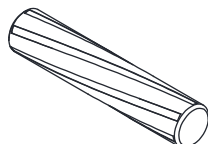
- ① EXTENSION RAIL - 6pcs ② EXTENSION SLIDE - 6pcs ③ CAM SCREW - 24pcs



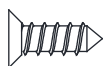
- ④ HIDDEN CAM - 24pcs ⑤ APPLIQUE CARD - 4pcs ⑥ PULL - 3pcs

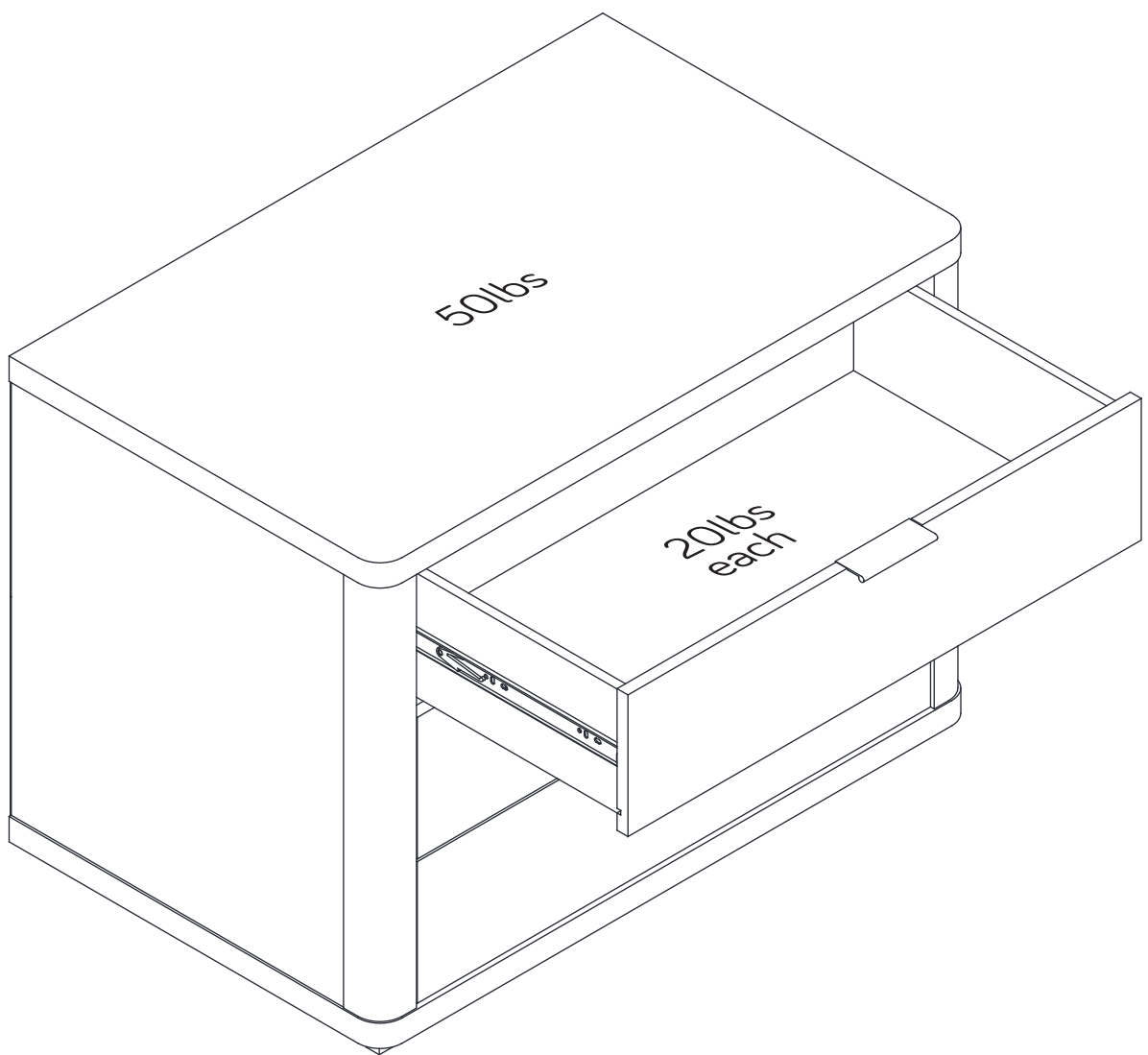


- ⑦ WOOD DOWEL - 8pcs ⑧ PAN HEAD SCREW M5*30mm - 36PCS ⑨ PAN HEAD SCREW M4*12MM - 16pcs



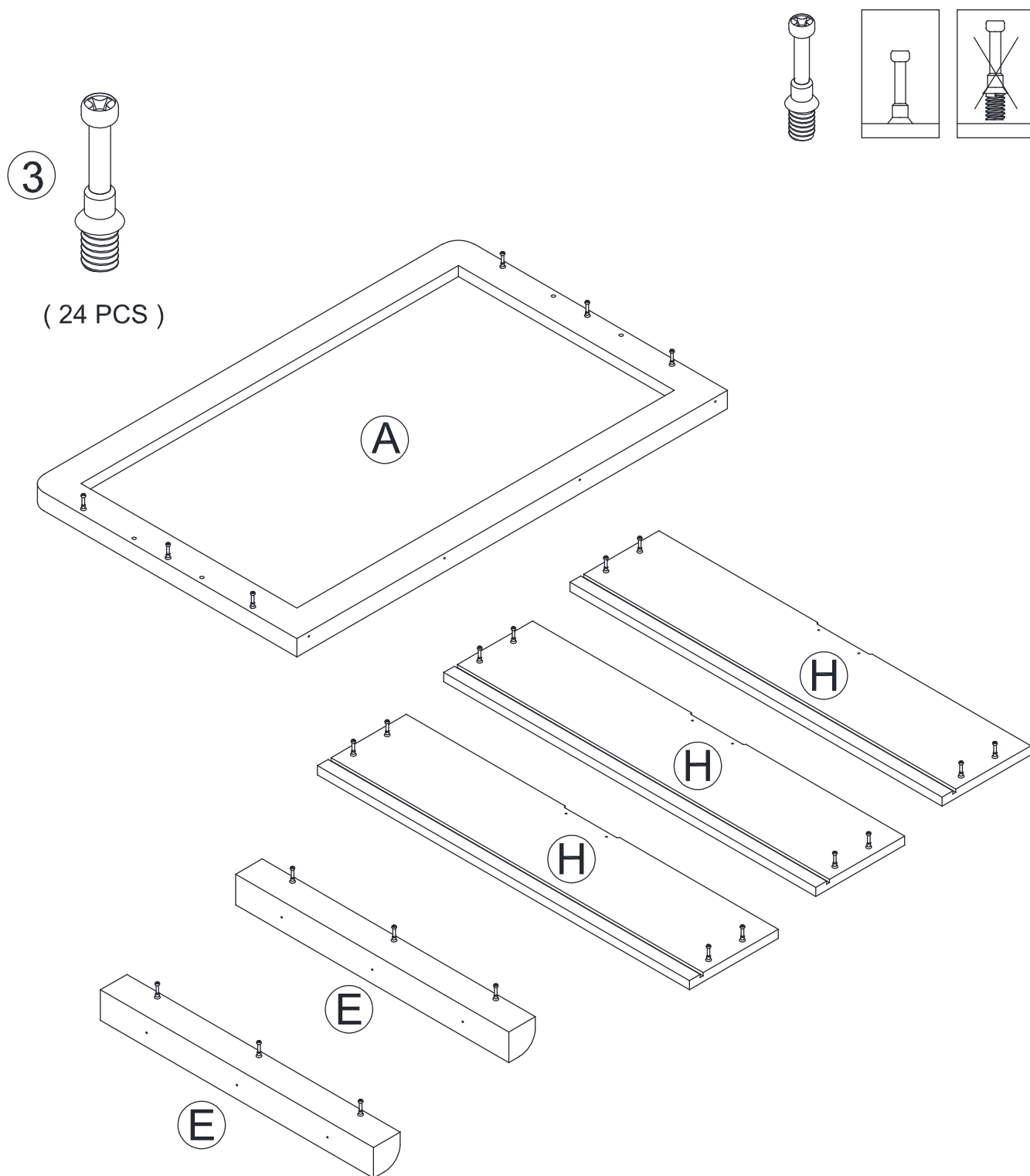
- ⑩ FLAT HEAD SCREW
M4*12mm - 42pcs





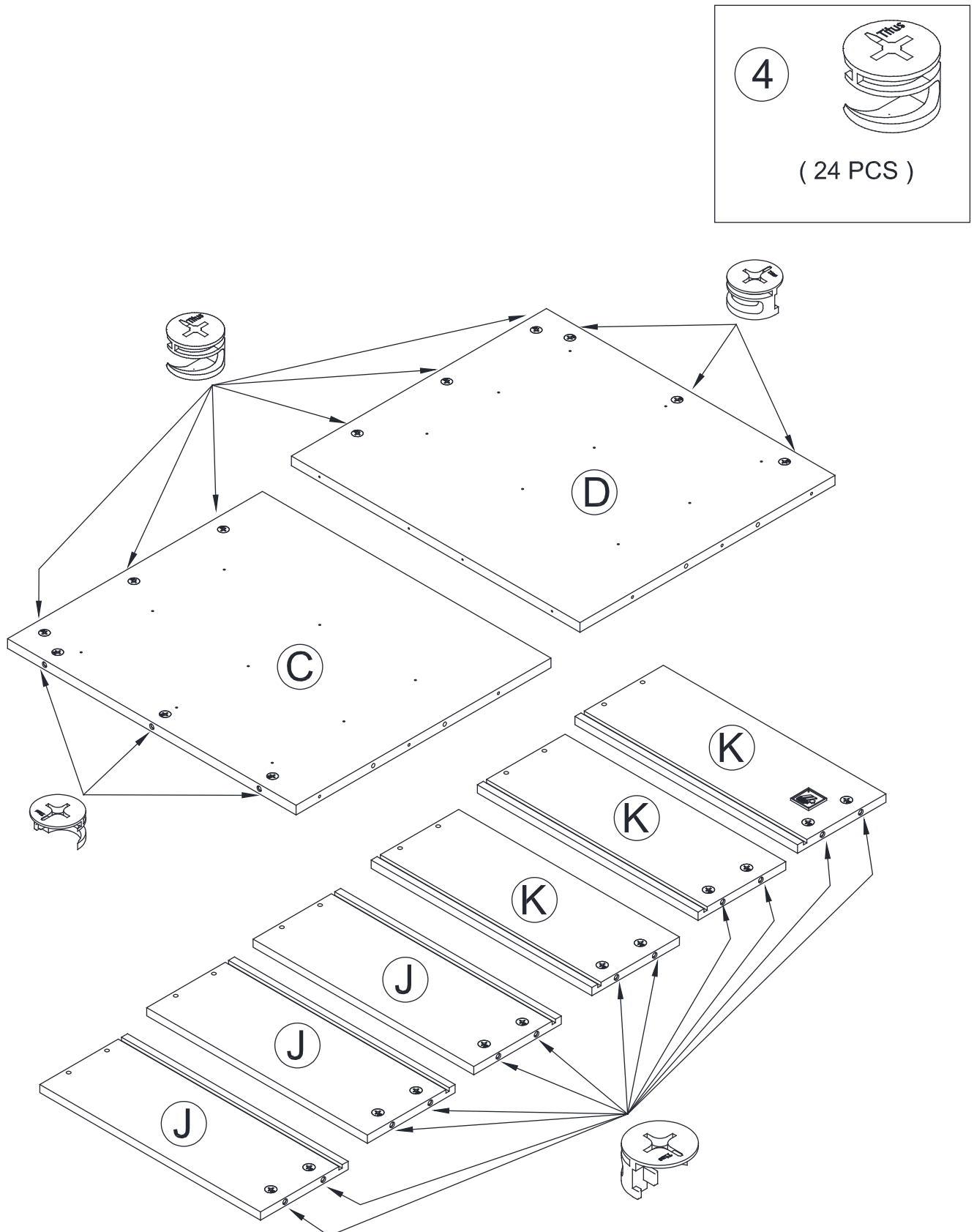
Step 1

- ◆ Fasten the twenty-four CAM SCREW (3) to the TOP (A), DRAWER FRONT (H) and the FRONT MOLDING (E).



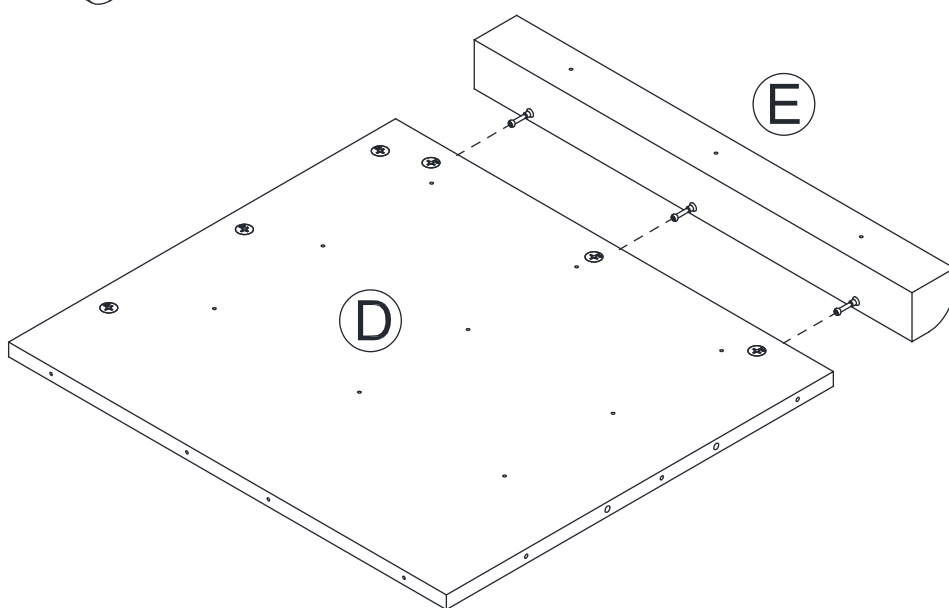
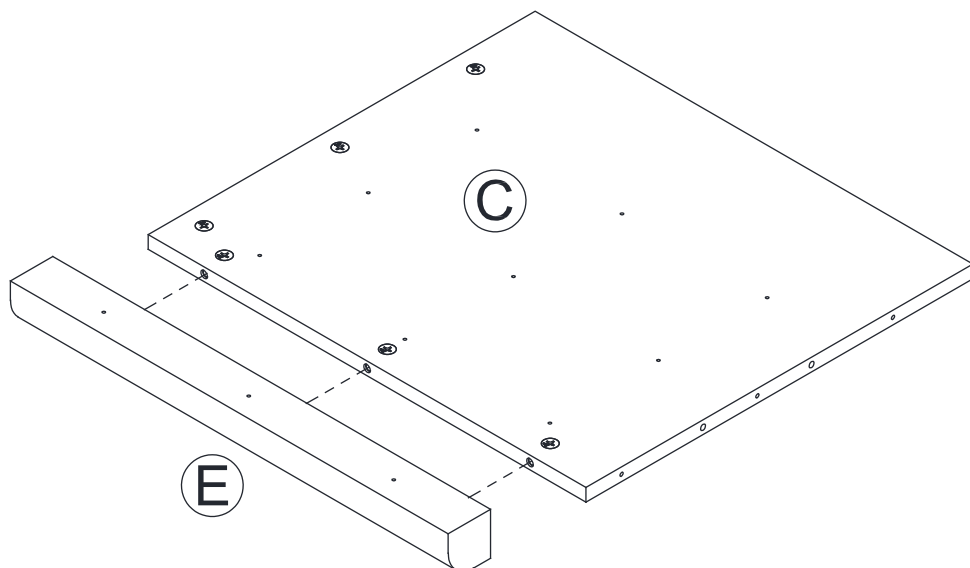
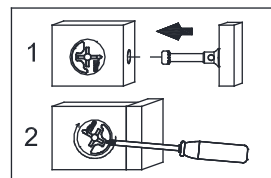
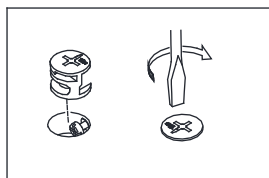
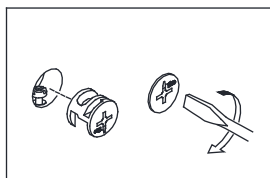
Step 2

- ◆ Insert the twenty-four HIDDEN CAM (4) to the ENDS (C and D) and the DRAWER SIDES (J and K).



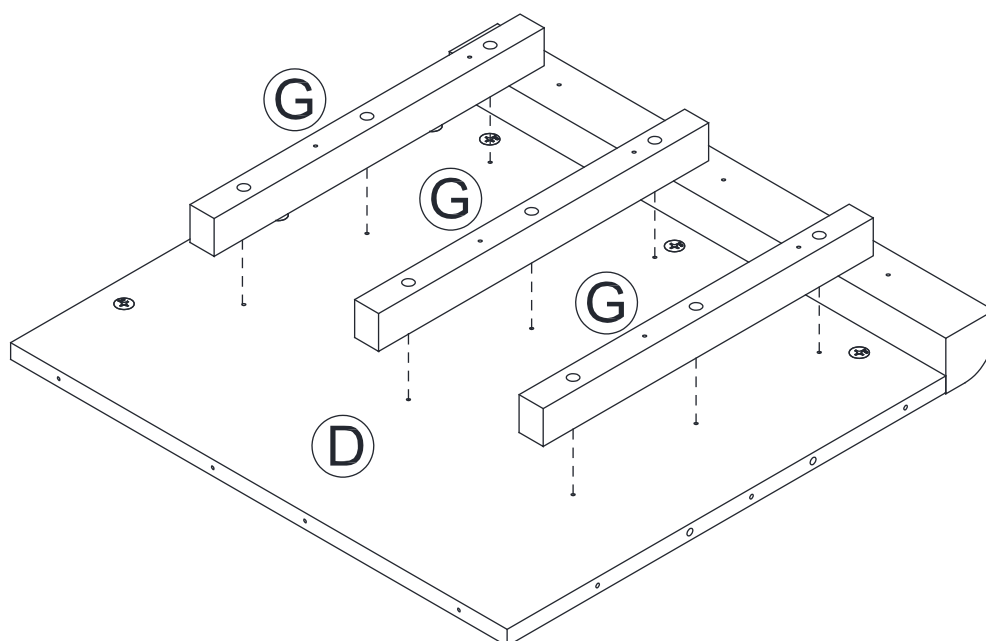
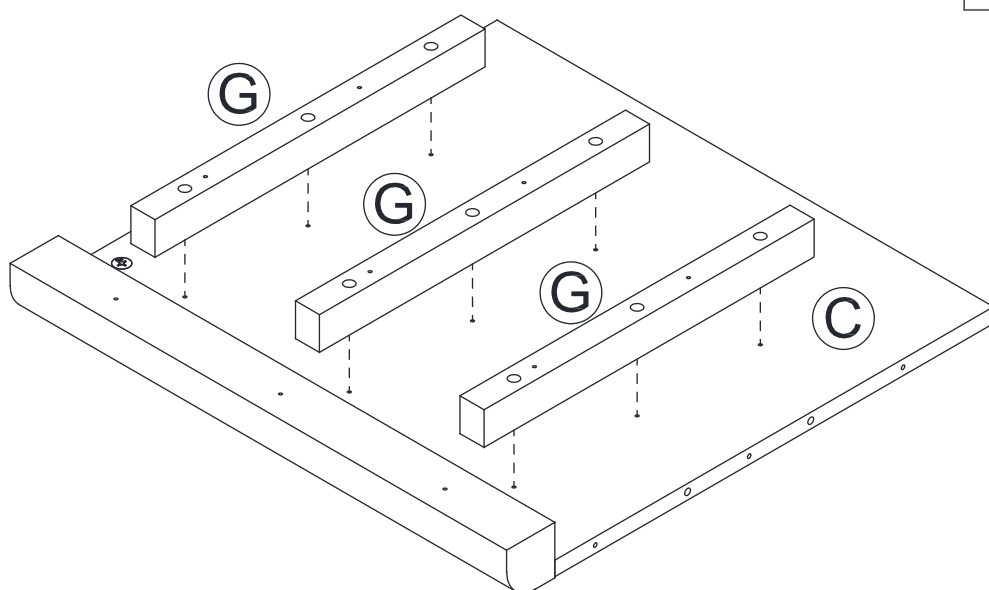
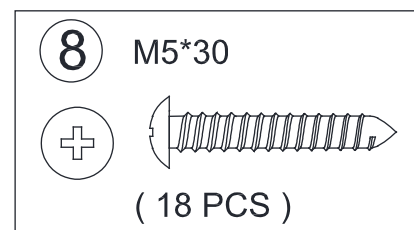
Step 3

- ◆ Fasten the FRONT MOLDING (E) to the LEFT END (C) and the RIGHT END (D) by fasten the HIDDEN CAM (4).



Step 4

- ◆ Fasten the SUPPORTING RAIL (G) to the LEFT END (C) and the RIGHT END (D) by using eighteen PAN HEAD SCREW (8).



Step 5

Separate the EXTENSION SLIDES (2) from the EXTENSION RAILS (1) as shown in the upper diagram below.

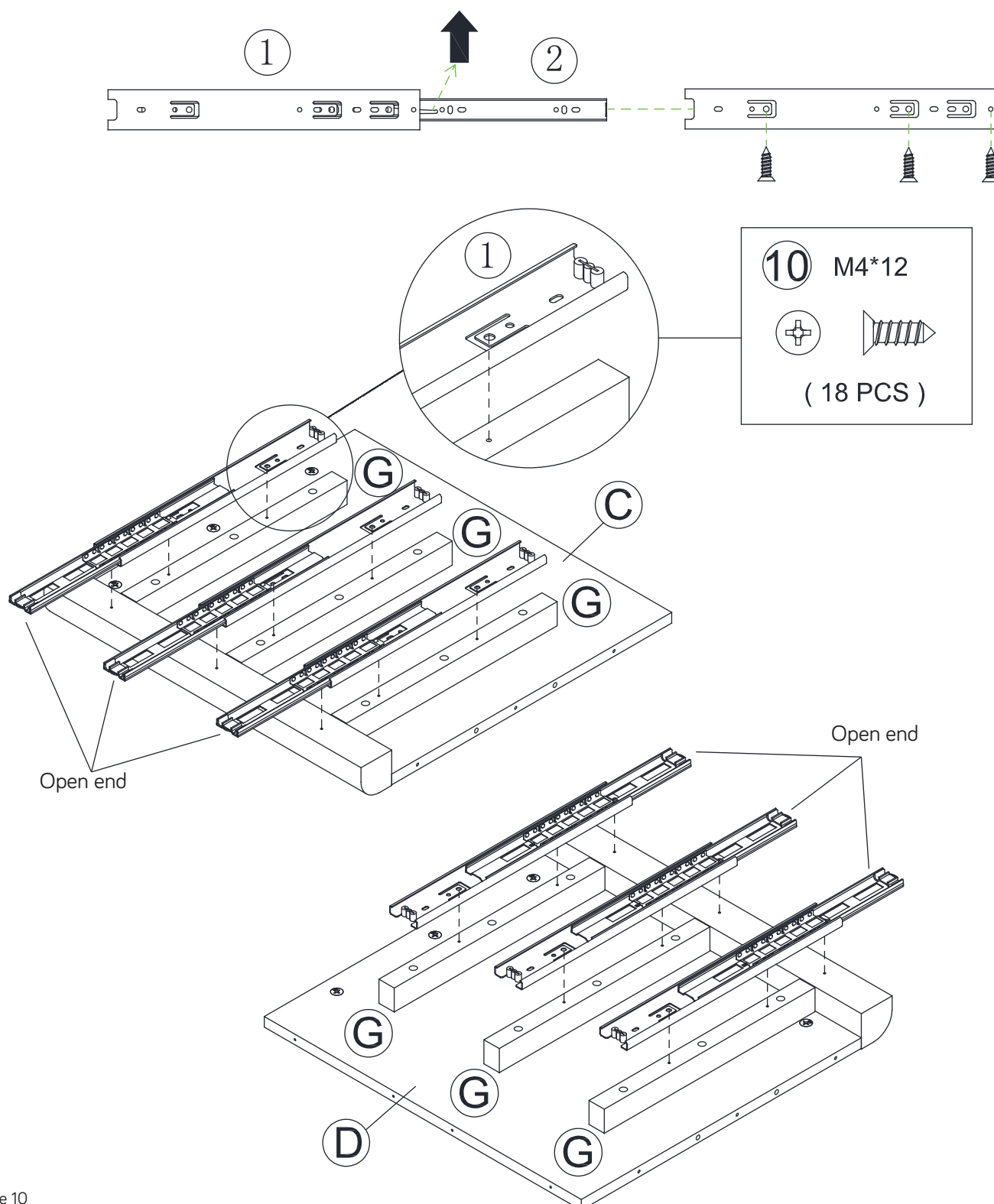
Be prepared, the parts are greasy.

NOTE: For each EXTENSION RAIL, turn a SCREW into the hole shown in the enlarged diagram.

- ◆ Then, slide the inner cartridge of the EXTENSION RAIL in to find the other hole that lines up with the hole in the ENDS. Turn a SCREW into this hole.

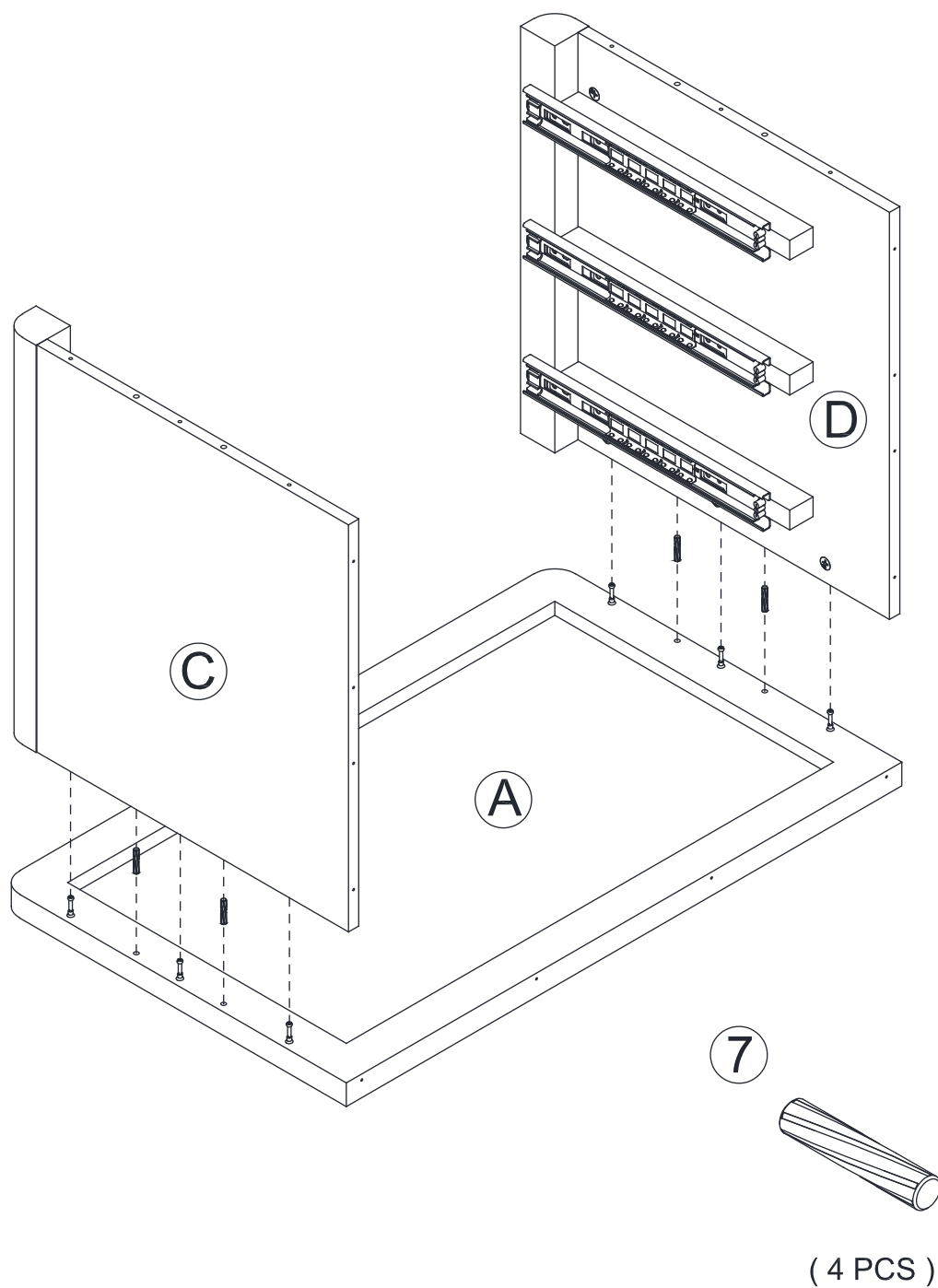
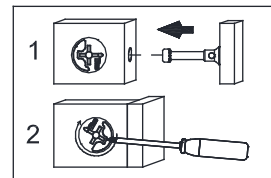
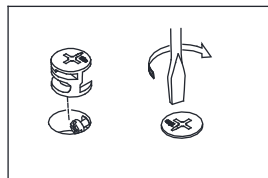
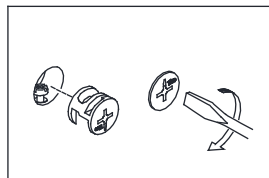
NOTE: The EXTENSION SLIDES will be used later for the DRAWERS.

- ◆ Fasten the EXTENSION RAIL (1) to the SUPPORTING RAIL (G) by using eighteen FLAT HEAD SCREW (10).



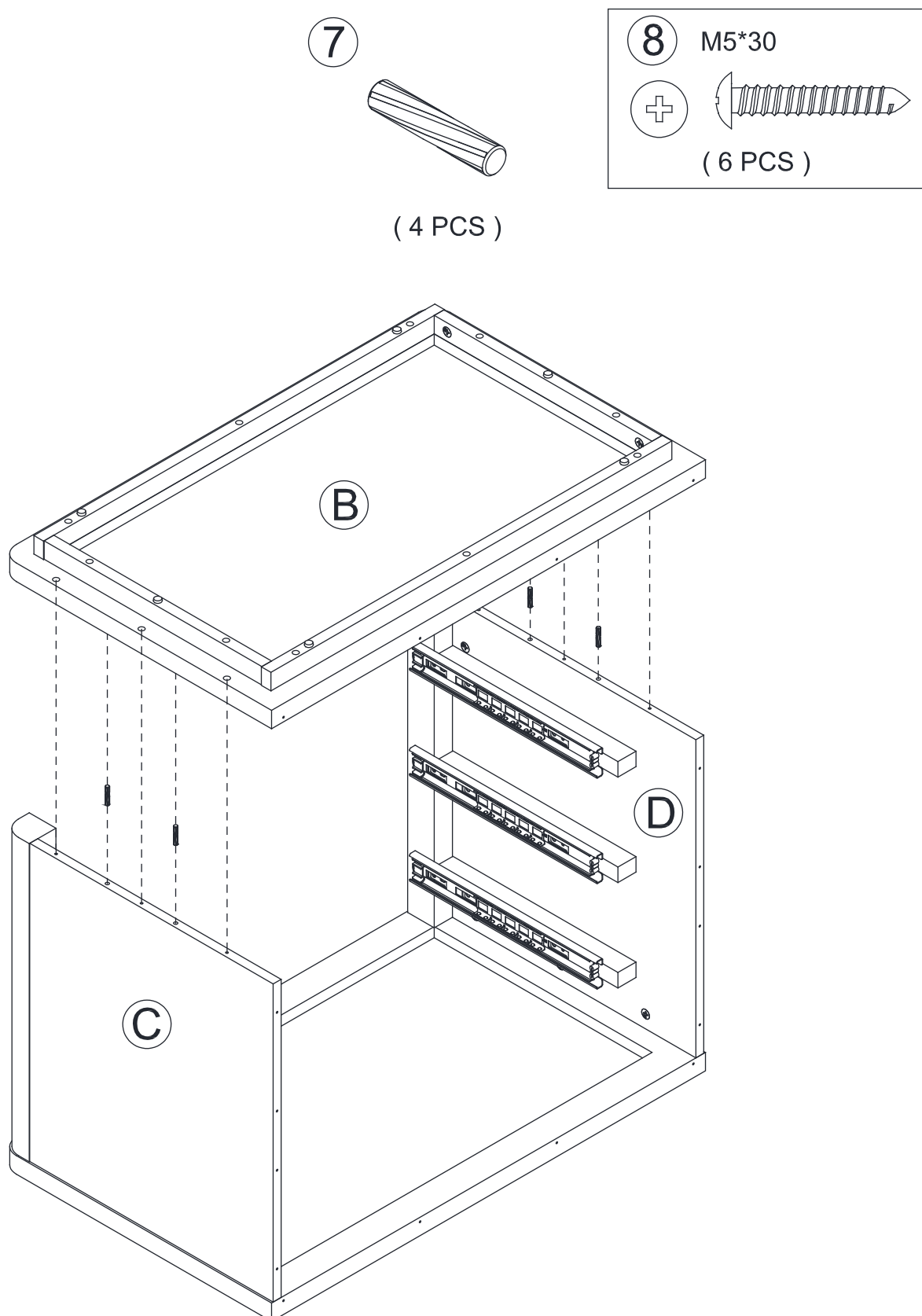
Step 6

- ◆ Insert four WOOD DOWEL (7) to the TOP (A). Attach the LEFT END (C) and the RIGHT END (D) to the TOP (A) by fasten the HIDDEN CAM (4).



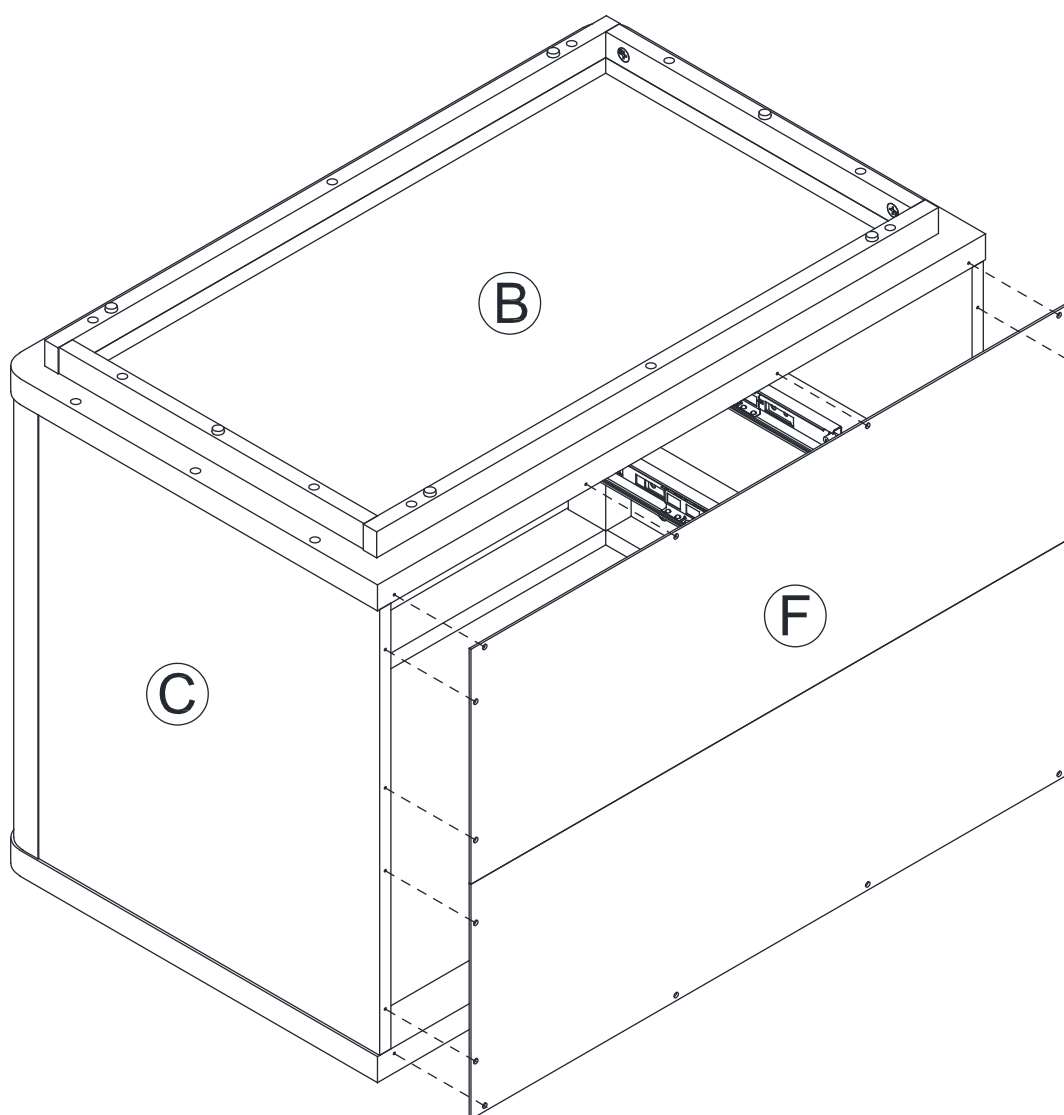
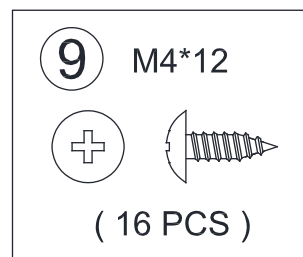
Step 7

- ◆ Insert four WOODEN DOWL (7) to the ENDS(C and D). Attach the BOTTOM (B) to ENDS (C and D) by using six PEN HEAD SCREW (8).



Step 8

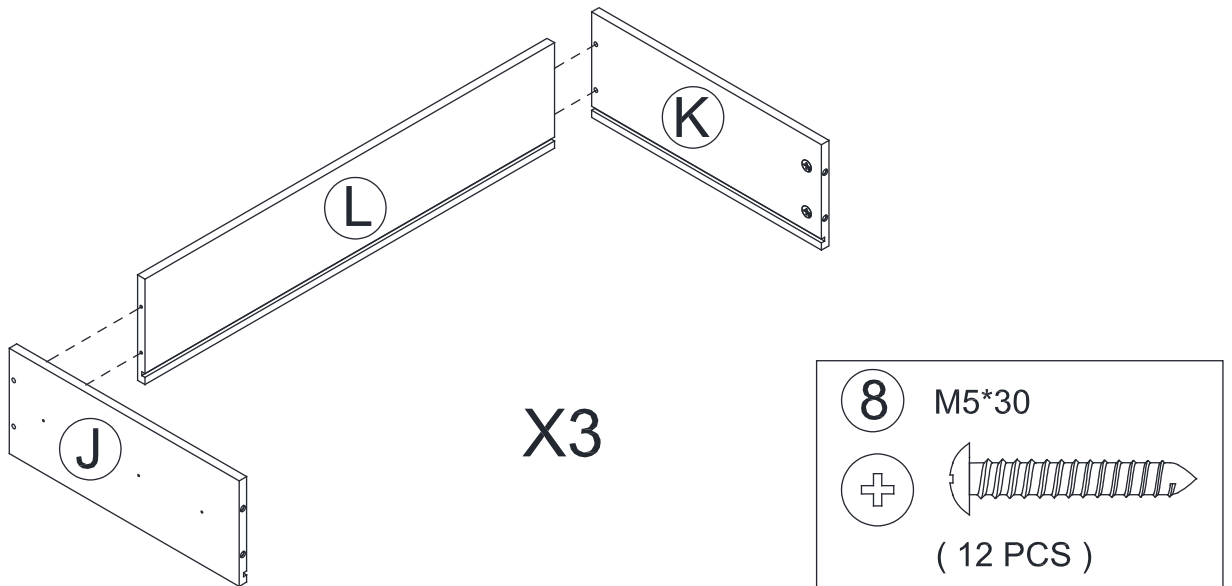
- ◆ Fasten the BACK BOARD (F) to the unit by using sixteen PEN HEAD SCREW (9).



Step 9

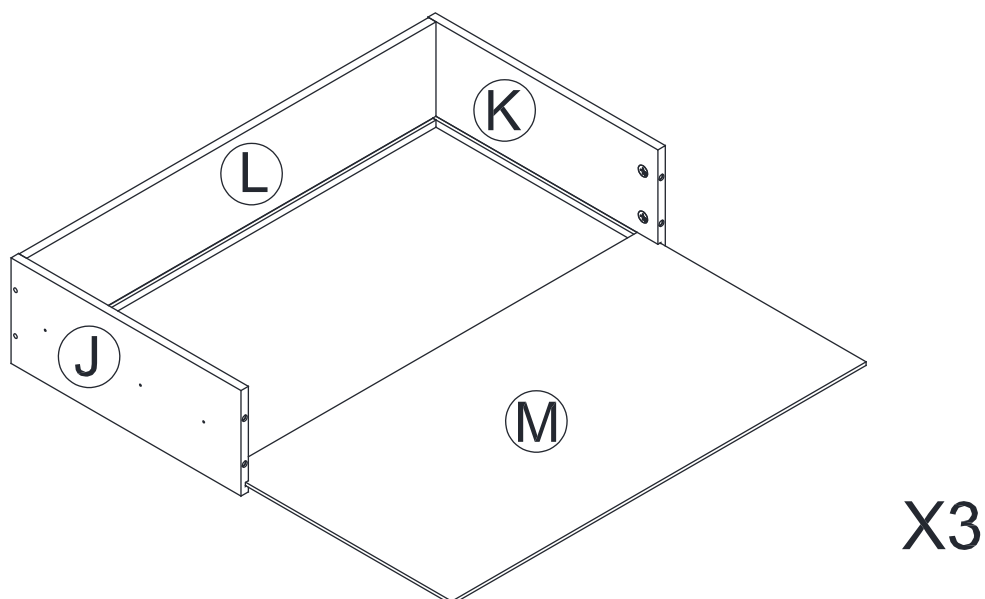
- ◆ Attach the LEFT DRAWER SIDE (J) and the RIGHT DRAWER SIDE (K) to the DRAWER BACK (L) by using four PEN HEAD SCREW (8).

Repeat the same on the other drawers.



- ◆ Insert the DRAWER BOTTOM (M) to the DRAWER SIDES (J and K) and the DRAWER BACK (L).

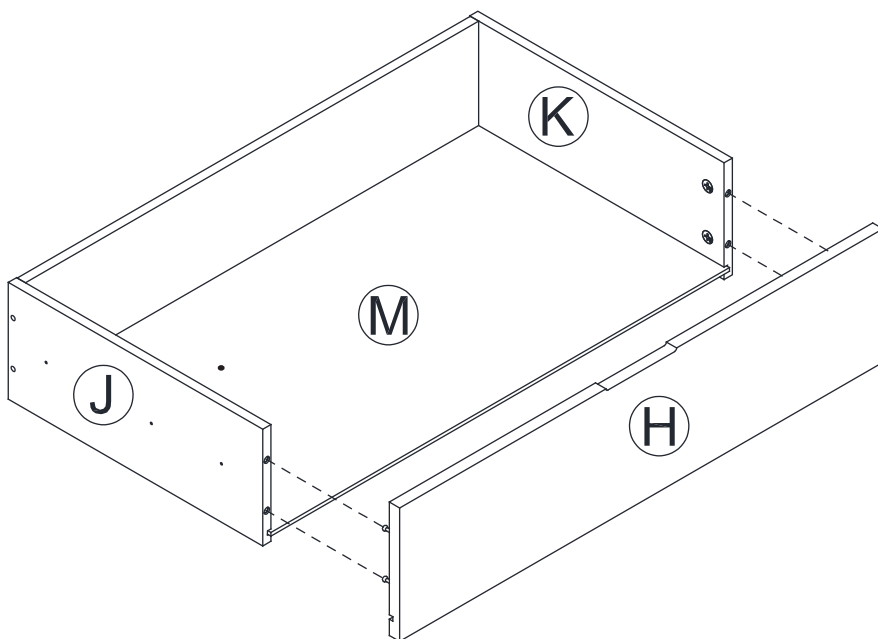
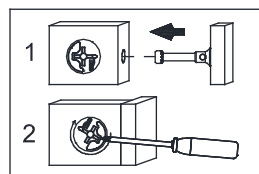
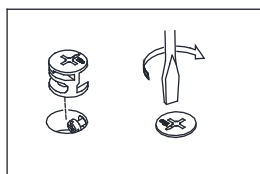
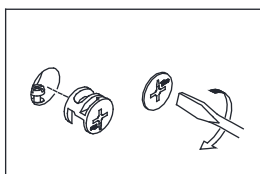
Repeat the same on the other drawers.



Step 10

- ◆ Attach the DRAWER FRONT (H) to the DRAWER SIDES (J and K) by fasten the HIDDEN CAM (4).

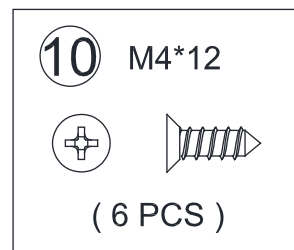
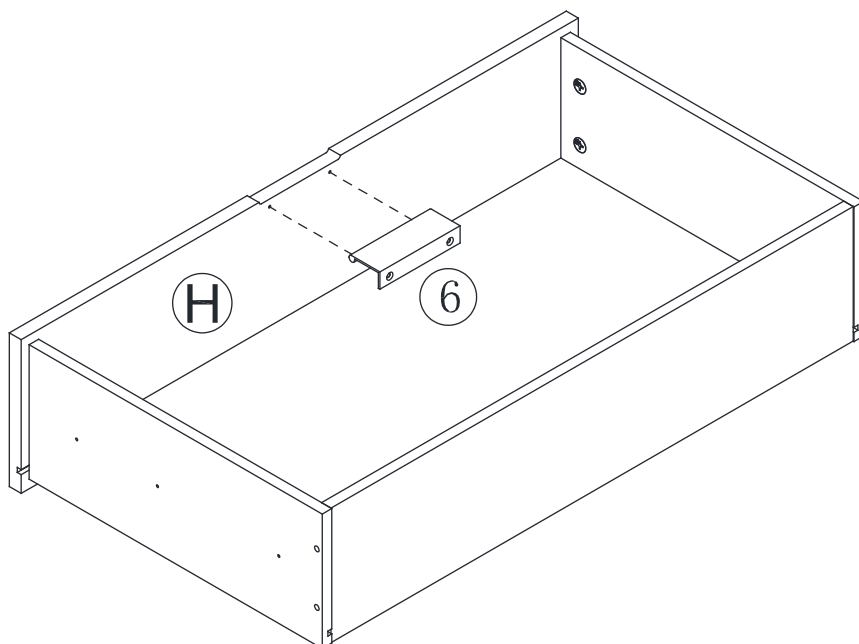
Repeat the same on the other drawers.



X3

- ◆ Fasten the PULL (6) to DRAWER FRONT (H) by using two FLAT HEAD SCREW (10).

Repeat the same on the other drawers.

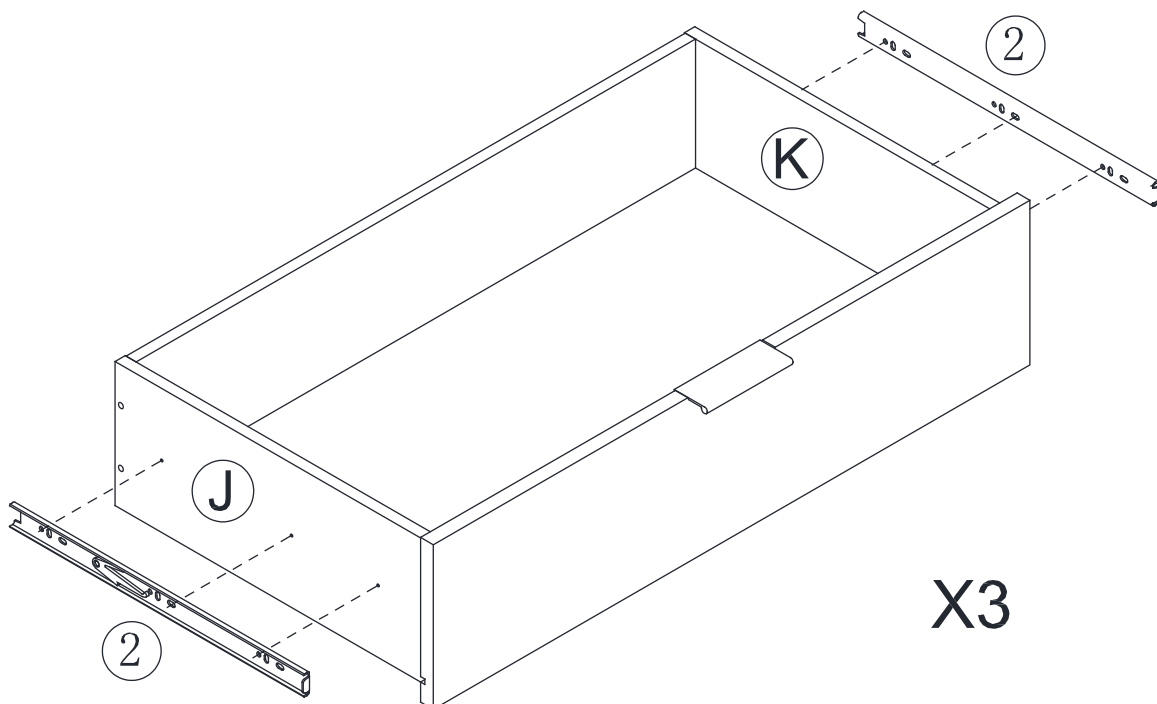
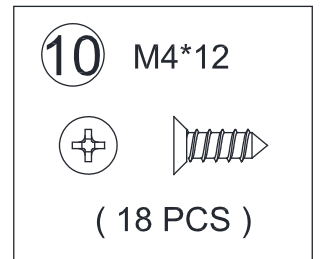


X3

Step 11

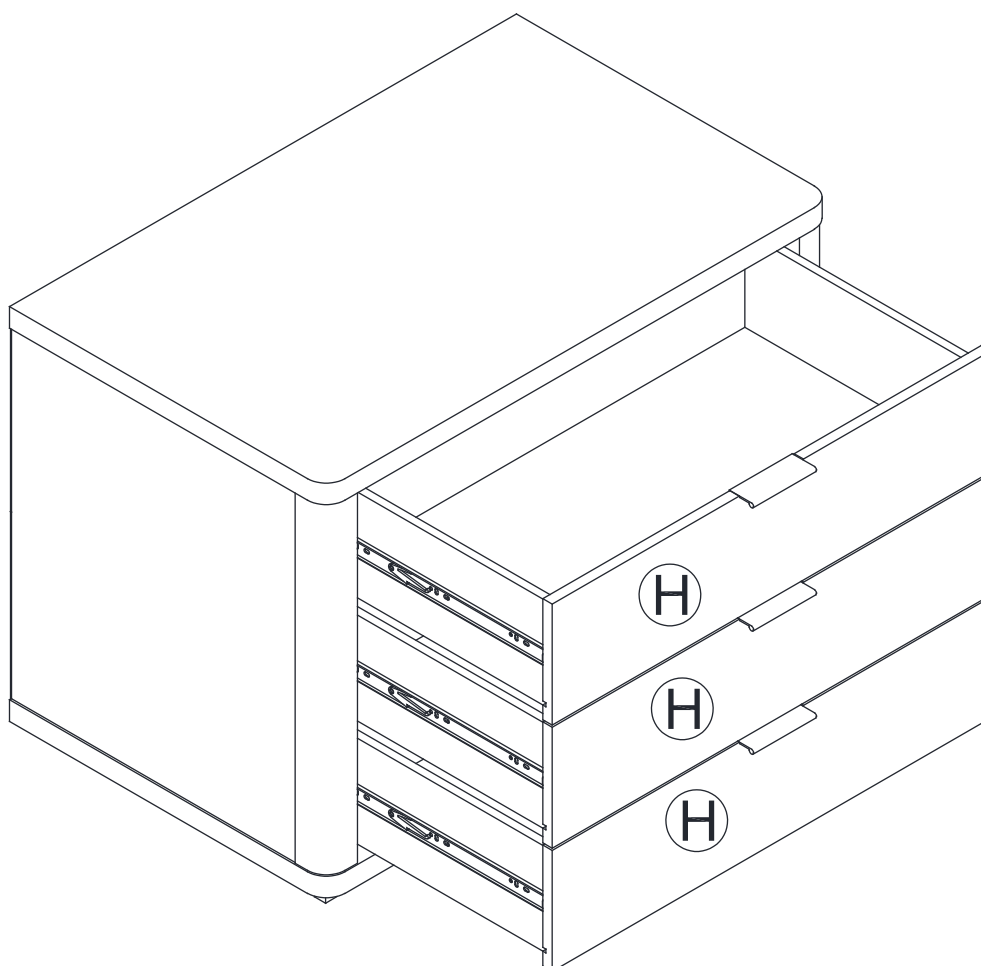
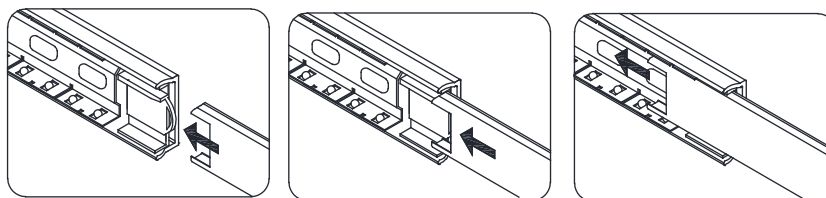
- ◆ Fasten the EXTENSION SLIDES (2) to the DRAWER SIDES (J and K) by using six FLAT HEAD SCREW (10).

Repeat the same on the other drawers.



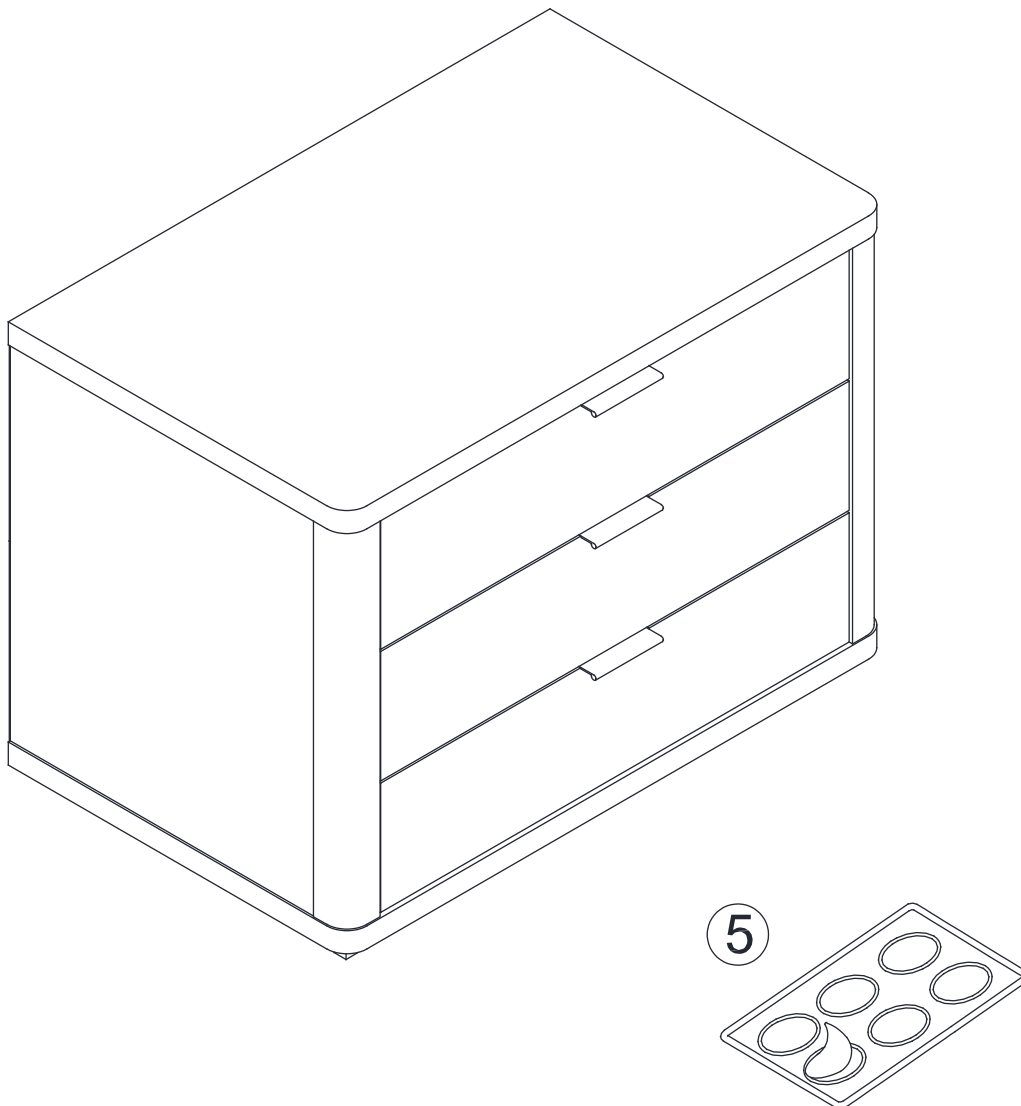
Step 12

- ◆ Insert the drawers to the unit as shown.



Step 13

- ◆ Peel the applique from the APPLIQUE CARD (5) and stick one onto each visible HIDDEN CAM.





MANHATTAN COMFORT

WARRANTY POLICY

All Manhattan Comfort furniture products are warranted, to the original purchaser at the time of purchase and for a period of 30 days thereafter.

Our warranty is limited to new products purchased in factory sealed cartons. This warranty is valid in the United States of America and Canada.

In order to provide you with timely assistance, please thoroughly inspect your furniture for missing or defective parts immediately after opening the carton.

Manhattan Comfort offers a 30-day parts replacement warranty on all items.

Our furniture products are not intended for outdoor use.

THE WARRANTY DOES NOT COVER:

- Defects/damages by improper assembly or disassembly.
- Defects/damages caused by shipping. Claims for damage during transit should be placed immediately to the transportation company.
- Defects/damages caused by inappropriate use of the furniture.



319 Ridge Rd. Dayton, NJ 08810

908-888-0818