

SAFE-STRIDE®

ACRYLIC-BASED ANTI-SLIP PAINT

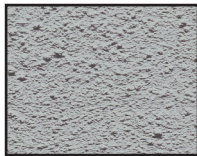
Safe-Stride is a highly durable acrylic paint that's specially formulated to provide additional traction to almost any surface. Safe-Stride® is ideal for stairs, decks, stone, marble, concrete, asphalt, and primed metal surfaces.



Colors



Black



Gray



Safety Yellow

Features

- Adheres to wood, concrete, primed metal, & more
- Single coat application
- Easy clean up with water
- Apply by brush, trowel, or 1/4" nap roller
- 1 Gallon covers approx 100-125 sq. ft.
- Dries in 18-24 hours under normal conditions
- Available in gray, black, and safety yellow

Tips & General Info

- To ensure proper adhesion, prep your surface by following the provided instructions.
- Do not paint if temperature will be below 50°F or above 90°F within twenty-four hours of application, or if rain is imminent. Do not paint in direct sunlight. Painting on a fair, dry day will give the best results.
- Safe-Stride is not recommended for use on garage floors on which cars and vehicles will be parked, or for underwater applications such as swimming pools.
- Safe-Stride is designed to reduce the hazards of slippery areas, not prevent these hazards.

Safe-Stride Acrylic-Base anti-slip coatings are designed to reduce the hazards of slippery areas, not prevent these hazards. Do not paint if temperature will be below 50°F within twenty-four hours of application, or if rain is imminent. Do not paint in direct sunlight. This product is not recommended on garage floors on which cars will be parked or for underwater applications such as swimming pools. Cool or high temperatures will extend the drying time of this product.



Wooster Products Inc.
"Make Every Step a Safe One"

800-321-4936
woosterproducts.com
sales@wooster-products.com



SAFE-STRIDE®

ACRYLIC-BASED ANTI-SLIP PAINT

INSTALLATION INSTRUCTIONS

Surface Preparation

To insure proper adhesion, all surfaces must be clean and free of dirt, grease, wax, mildew, rust, oil, chalk, and other foreign matter. Spalling or powdery concrete must be repaired to a sound surface before coating. Concrete that is shiny smooth or suspected of treatment with chemical "de-icers" should be etched with diluted muriatic acid to promote bonding. Scuff sanding of glossy painted surfaces is recommended to secure the maximum adhesion of this product.

Wood:

Bare or previously painted wood should be prepared as described above by removing any foreign matter, loose paint, or chalk, and scuff sanding painted glossy areas. Wolmanized wood must be aged a minimum of one year in order for product to adhere. One or two coats of Safe-Stride Acrylic-Base may be applied. Wood priming is not necessary when this product is used properly.

Cement & Masonry:

New concrete should age for at least thirty days prior to being top-coated. Bare and previously painted surfaces merely require preparation as described above before applying one or more coats of Safe-Stride Acrylic-Base.

Metal:

Any bare metal should be primed with any standard rust inhibiting metal primer following label directions before applying Safe-Stride Acrylic-Base.

Application

Stir thoroughly upon opening and remix periodically. Apply by brush, roller or trowel at a spreading rate of 100 to 125 sq. ft. per gallon. Thinning of this product is not recommended. When rolling, back brushing immediately after roller application is recommended for uniformity of the surface and durability of the product. Safe Stride Acrylic-Base is dry to walk on or recoat in 18 to 24 hours under normal drying conditions. The maximum hardness of this product is typically achieved in 7 to 14 days. All equipment should be cleaned immediately after use with soap and water and dried for storage.

IMPORTANT NOTICE TO PURCHASER: THE FOLLOWING IS MADE IN LIEU OF ALL WARRANTIES, EXPRESSED OR IMPLIED, INCLUDING WARRANTIES OF MERCHANTABILITY AND FITNESS FOR A PARTICULAR PURPOSE.

Purchase or use of this product constitutes an agreement with Seller and Manufacturer that, if the product proves to be defective or in any way unsuitable, Seller's and Manufacturer's limit of liability for all damages, including but not limited to incidental or consequential damages, and User's or Purchaser's exclusive remedy, regard less of legal theory, including theories of breach of warranty, negligence and strict liability, shall be to receive, at Seller's or Manufacturer's option, repair of the defective product, an equivalent quantity of replacement product or a refund of the purchase price.



Wooster Products Inc.
"Make Every Step a Safe One"

800-321-4936
woosterproducts.com
sales@wooster-products.com

