

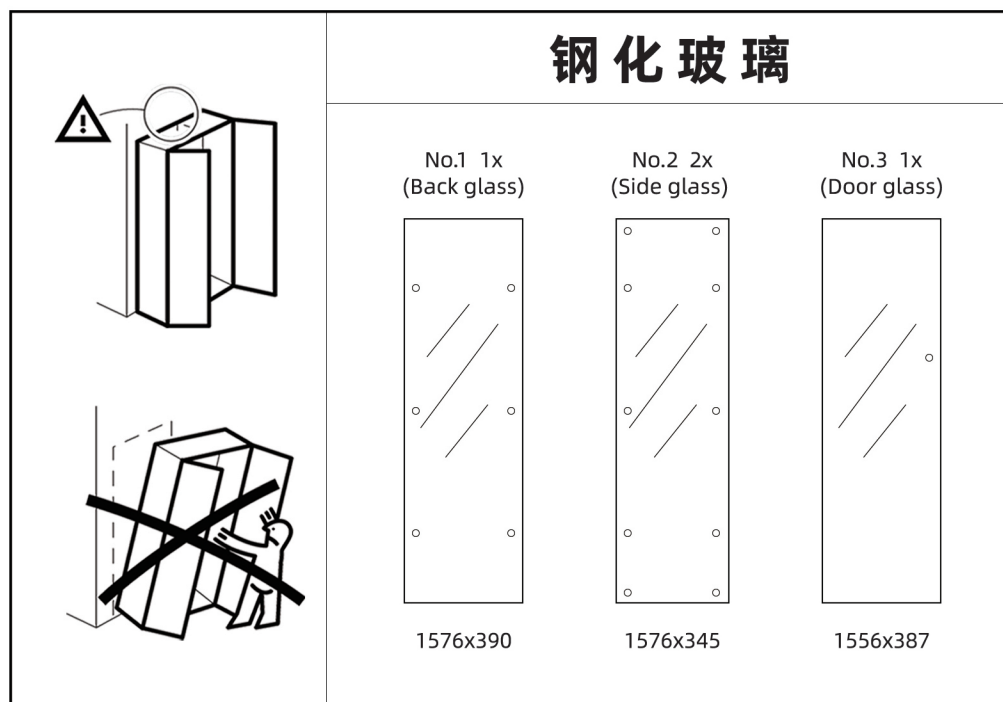
# " TRANSPARENT " CABINET

## TEMPERED GLASS

WINE CABINET / DISPLAY CABINET

If you have any questions, please feel free to contact us.

Email: [service@aminalife.com](mailto:service@aminalife.com)



## ACCESSORY PACKAGE



### ANTI-DUMPING DEVICE

Screw the anti-pour device to the top plate, and then screw the other end to the wall



Screw 1X



Fall-proof 1X



Door clamp 2X



Horn guard 1X



lock 1X



Connector 14X



Door handle 1X



Nut 26X



Anchor 4X



Anchor screw 4X



Screw 36X



Gasket 52X



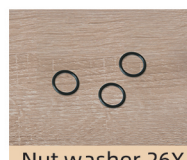
Bolt driver 1X



Door stopper 1X



Door spindle core 2X



Nut washer 26X

If you have any questions, please feel free to contact us.  
Email: [service@aminalife.com](mailto:service@aminalife.com)

Important information

Read carefully.

Keep this information for future reference.

# WARNING

Serious or fatal crushing injuries

can occur from furniture tip-over.

To prevent this furniture from tipping over, it must be permanently fixed to the wall.



There is only one kind of wall fixing device included in the product, which is only applicable to wood wall or solid wall. Wood wall only needs to be fixed with screws, it does not need expansion bolt; Load bearing wall and solid wall need impact drilling, expansion bolts and screws. The wall fixing device (anti-tip device) included in the product is not suitable for walls that have weak nail holding force, such as gypsum board. If it needs to be fixed on a wall which is similar to gypsum board, please make sure that the screw is fixed at the keel position, and ensure that the screw force point is firm. Please use suitable fixtures for your home wall because different wall materials require different types of fixtures.

1. Tempered glass has a 3 ‰ probability of self explosion. If self explosion occurs accidentally, please contact online customer service, and we will reissue the tempered glass for you. During installation, please wear gloves, long sleeve shirt, trousers and socks to avoid injury in case of accident;
2. To avoid accident, please do not let minors nor children approach during installation. At the same time, please make sure that the installers are two adults.
3. During installation, please use cardboards or carpets as buffer layers to isolate the possibility of collision between the glass corner and hard objects such as the ground. Especially when installing tempered glass, please do not let the corner knock to the ground, so as to avoid self explosion of tempered glass caused by stress change;
4. After the cabinet is installed, be sure to install the anti-tip device to prevent serious or fatal injury. In order to prevent tipping over, the cabinet must be permanently connected to the wall. (wall fixing device, including but not limited to the anti-tip device we provided, you can install similar devices to avoid danger and increase safety)
5. In daily use, only legal adults can use the glass cabinet. Minors should stay away from the cabinet. Please instruct or take care of children to stay away from the cabinet to avoid the risk of collision of cabinet door or falling of objects caused by children's behaviors such as opening, closing and shaking cabinet. Once again, it is strongly recommended that you install an anti-tip device, keep minors away (2m radius of the product), and install a door lock to avoid accidental injury caused by children open and close cabinet.
6. The top/bottom plate of tempered glass cabinet is made of melamine paper covered particleboard, edge band is made of PVC material. They do not have fire protection function.
7. When the product is discarded, please consult the relevant local departments or companies for classification
8. The product is a partially transparent tempered glass cabinet, it is not fully transparent. After installation, the gap will be different due to the different fastening or error.
9. No part of the product can be swallowed, played or used for other purposes.
10. After installation of the product, Plate glass load-bearing 5kg. Note that the load bearing data is limited to the product and its contents.
11. Product dimensions may have an error with 10mm due to the usage of different measuring tools or methods.

## PRODUCT COMPONENT TABLE

|   | ASSEMBLY            | SIZE (MM) | QUANTITY | TEXTURE OF MATERIAL |
|---|---------------------|-----------|----------|---------------------|
| 1 | Back glass          | 1576x390  | 1        | Tempered glass      |
| 2 | Side glass          | 1576x345  | 2        |                     |
| 3 | Door glass          | 1556x387  | 1        |                     |
| 4 | Shelf glass         | 385x315x5 | 3        |                     |
| 5 | Top / bottom plate  | 425x365   | 2        | Particleboard MFC   |
| 6 | Accessories package | ...       | X        | Multiple materials  |



# INSTALLATION INSTRUCTIONS

01



Door spindle core



Door suction

## Door stopper / Door spindle core

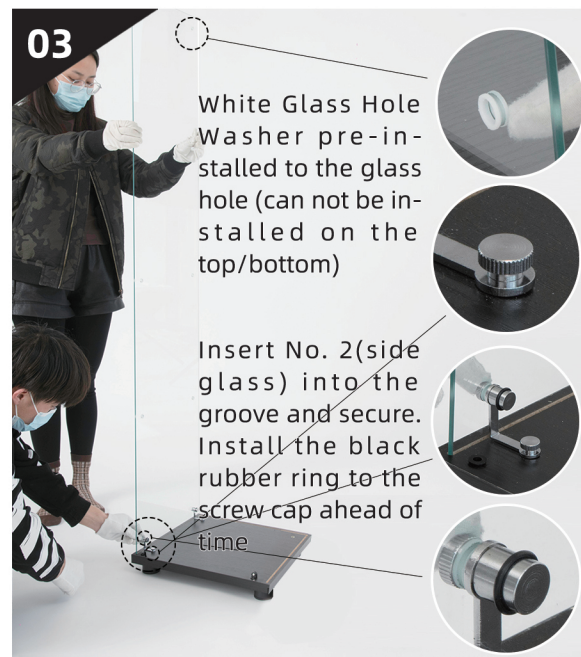
Before installation, confirm the top plate and bottom plate, and knock the door stopper and door spindle core into the hole. Otherwise, it will be difficult to install the door stopper and door spindle core in subsequent installation. Since the hole position of the top/bottom plate has an error of  $\pm 0.5$  mm, we are concerned that the error will affect your experience, hereby remind, please forgive me!

02



If the ground is uneven  
adjustable anchor height

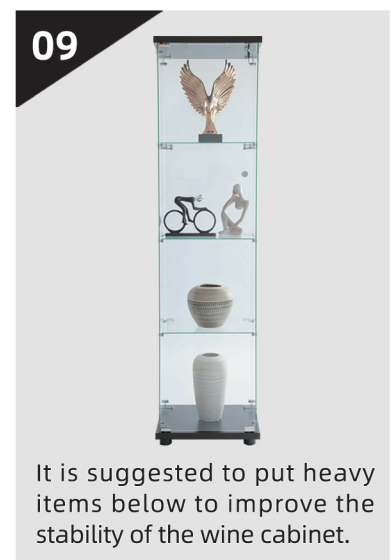
03



White Glass Hole Washer pre-installed to the glass hole (can not be installed on the top/bottom)

Insert No. 2 (side glass) into the groove and secure. Install the black rubber ring to the screw-cap ahead of time



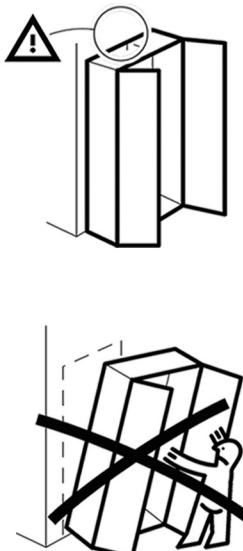




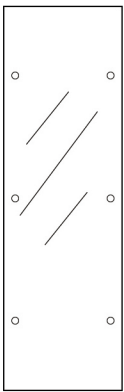
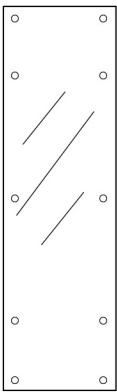
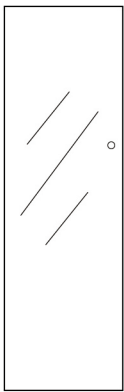
# " TRANSPARENT " CABINET

## TEMPERED GLASS

— ● WINE CABINET / DISPLAY CABINET ● —



### 钢化玻璃

| No.1 2x<br>(Back glass)  | No.2 2x<br>(Side glass)  | No.3 2x<br>(Door glass)  |
|--|--|--|
|  |  |  |
| 1576x390   | 1576x345   | 1556x387   |



## ACCESSORY PACKAGE



### ANTI-DUMPING DEVICE

Screw the anti-pour device to the top plate, and then screw the other end to the wall



Screw 1X



Fall-proof 1X



Door clamp 4X



Horn guard 2X



lock 1X



Connector 14X



Door handle 2X



Nut 26X



Anchor 6X



Anchor screw 6X



Screw 37X



Gasket 56X



Bolt driver 1X



Door stopper 2X



Door spindle core 4X



Nut washer 26X

## Important information

Read carefully.

Keep this information for future reference.

# WARNING

Serious or fatal crushing injuries can occur from furniture tip-over.

To prevent this furniture from tipping over, it must be permanently fixed to the wall.



There is only one kind of wall fixing device included in the product, which is only applicable to wood wall or solid wall. Wood wall only needs to be fixed with screws, it does not need expansion bolt; Load bearing wall and solid wall need impact drilling, expansion bolts and screws. The wall fixing device (anti-tip device) included in the product is not suitable for walls that have weak nail holding force, such as gypsum board. If it needs to be fixed on a wall which is similar to gypsum board, please make sure that the screw is fixed at the keel position, and ensure that the screw force point is firm. Please use suitable fixtures for your home wall because different wall materials require different types of fixtures.

1. Tempered glass has a 3 % probability of self explosion. If self explosion occurs accidentally, please contact online customer service, and we will reissue the tempered glass for you. During installation, please wear gloves, long sleeve shirt, trousers and socks to avoid injury in case of accident;
2. To avoid accident, please do not let minors nor children approach during installation. At the same time, please make sure that the installers are two adults.
3. During installation, please use cardboards or carpets as buffer layers to isolate the possibility of collision between the glass corner and hard objects such as the ground. Especially when installing tempered glass, please do not let the corner knock to the ground, so as to avoid self explosion of tempered glass caused by stress change;
4. After the cabinet is installed, be sure to install the anti-tip device to prevent serious or fatal injury. In order to prevent tipping over, the cabinet must be permanently connected to the wall. (wall fixing device, including but not limited to the anti-tip device we provided, you can install similar devices to avoid danger and increase safety)
5. In daily use, only legal adults can use the glass cabinet. Minors should stay away from the cabinet. Please instruct or take care of children to stay away from the cabinet to avoid the risk of collision of cabinet door or falling of objects caused by children's behaviors such as opening, closing and shaking cabinet. Once again, it is strongly recommended that you install an anti-tip device, keep minors away (2m radius of the product), and install a door lock to avoid accidental injury caused by children open and close cabinet.
6. The top/bottom plate of tempered glass cabinet is made of melamine paper covered particleboard, edge band is made of PVC material. They do not have fire protection function.
7. When the product is discarded, please consult the relevant local departments or companies for classification
8. The product is a partially transparent tempered glass cabinet, it is not fully transparent. After installation, the gap will be different due to the different fastening or error.
9. No part of the product can be swallowed, played or used for other purposes.
10. After installation of the product, Plate glass load-bearing 8kg. Note that the load bearing data is limited to the product and its contents.
11. Product dimensions may have an error with 10mm due to the usage of different measuring tools or methods.

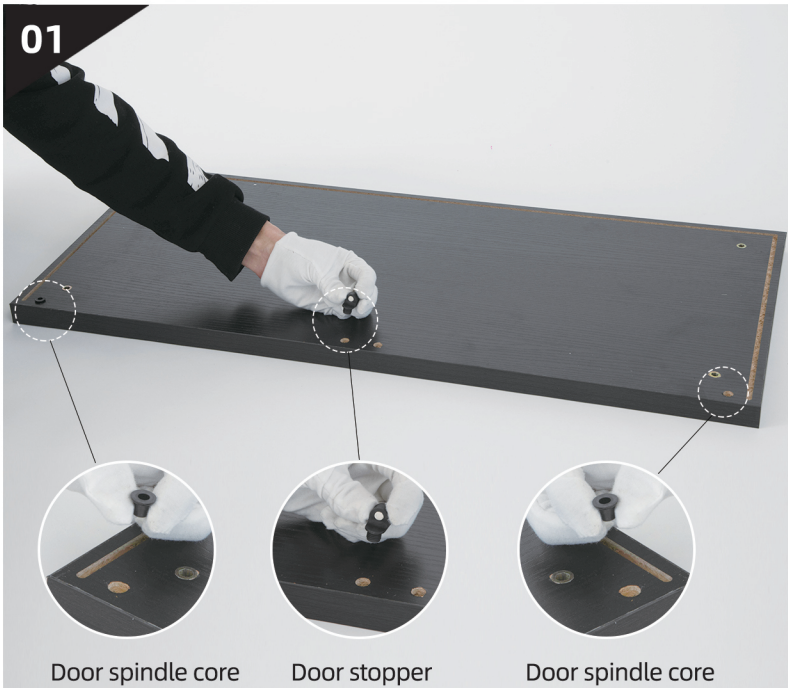
## PRODUCT COMPONENT TABLE

|   | ASSEMBLY            | SIZE (MM) | QUANTITY | TEXTURE OF MATERIAL |
|---|---------------------|-----------|----------|---------------------|
| 1 | Back glass          | 1576x390  | 2        | Tempered glass      |
| 2 | Side glass          | 1576x345  | 2        |                     |
| 3 | Door glass          | 1556x387  | 2        |                     |
| 4 | Shelf glass         | 775x315   | 3        |                     |
| 5 | Top / bottom plate  | 805x365   | 2        | Particleboard MFC   |
| 6 | Accessories package | ...       | X        | Multiple materials  |
| 7 | Rubber Strip        | ...       | 1        | PVC                 |



# INSTALLATION INSTRUCTIONS

01



Door spindle core

Door stopper

Door spindle core

## Door stopper / Door spindle core

Before installation, confirm the top plate and bottom plate, and knock the door stopper and door spindle core into the hole. Otherwise, it will be difficult to install the door stopper and door spindle core in subsequent installation. hereby remind, please forgive me!

02



If the ground is uneven  
adjustable anchor height

03



Insert No. 2(side glass) into groove and fix, White Glass Hole Washer to glass hole (not on Top/bottom), black rubber ring to screw cap ahead of time

04

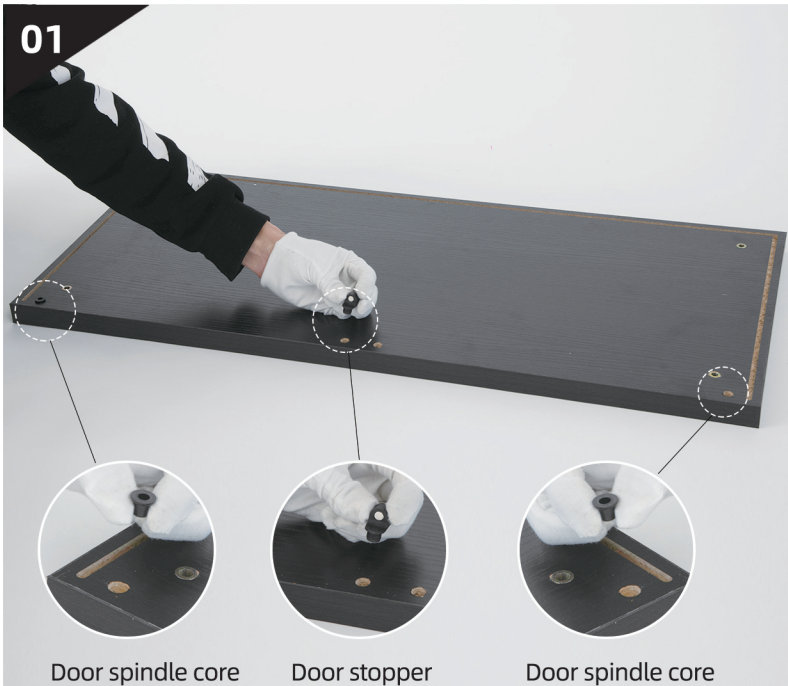


Insert No. 1(back glass) into the groove and connect the connector with No. 2 (side glass) and install the side glass outer screw



# INSTALLATION INSTRUCTIONS

01



Door spindle core

Door stopper

Door spindle core

## Door stopper / Door spindle core

Before installation, confirm the top plate and bottom plate, and knock the door stopper and door spindle core into the hole. Otherwise, it will be difficult to install the door stopper and door spindle core in subsequent installation. Since the hole position of the top/bottom plate has an error of  $\pm 0.5$  mm, we are concerned that the error will affect your experience, hereby remind, please forgive me!

02



If the ground is uneven  
adjustable anchor height

03



White Glass Hole Washer pre-installed to the glass hole (can not be installed on the top/bottom)

Insert No. 2 (side glass) into the groove and secure. Install the black rubber ring to the screw cap ahead of time

04



Insert No. 1 (back glass) into the groove and connect the connector with No. 2 (side glass) and install the side glass outer screw