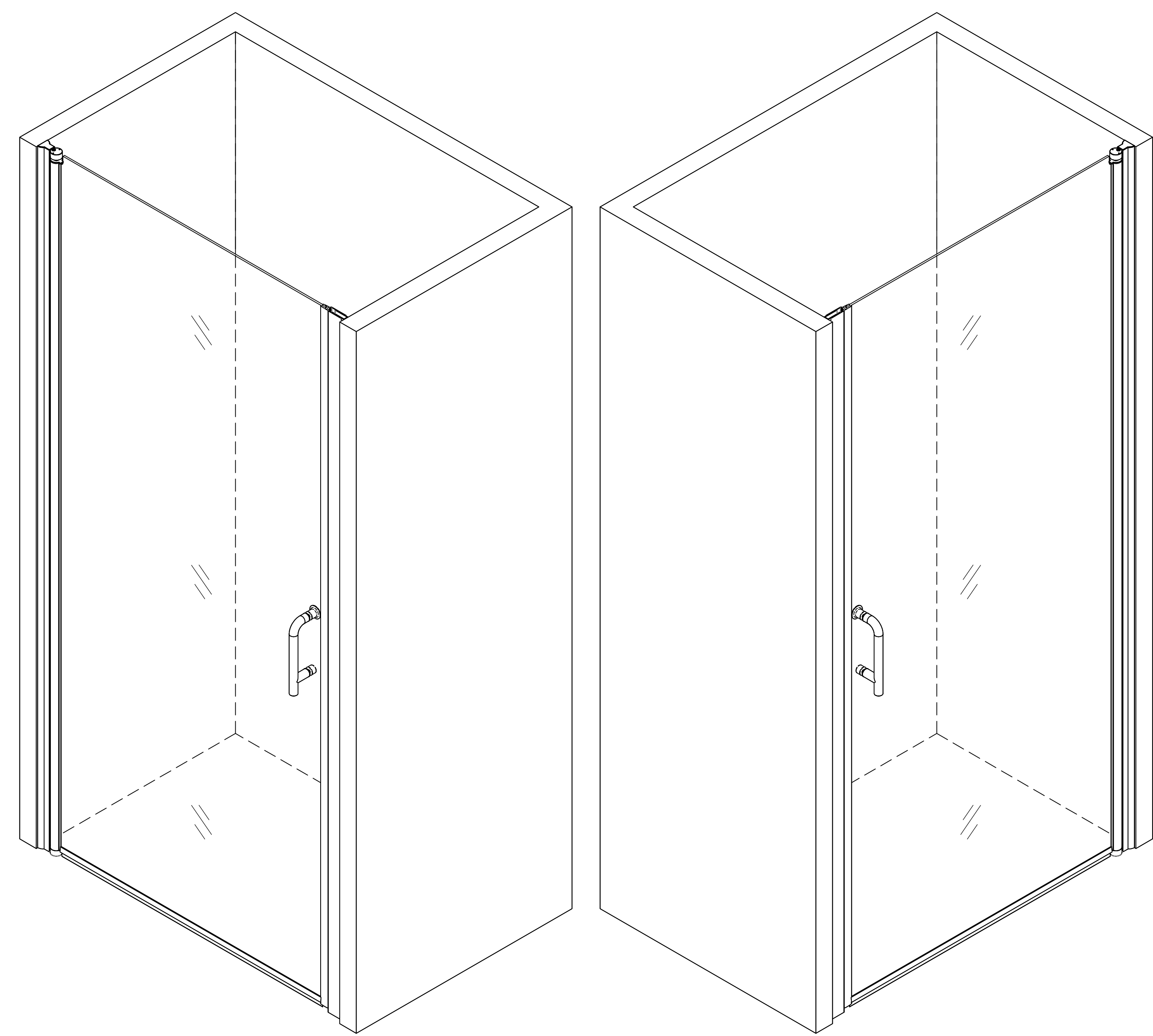
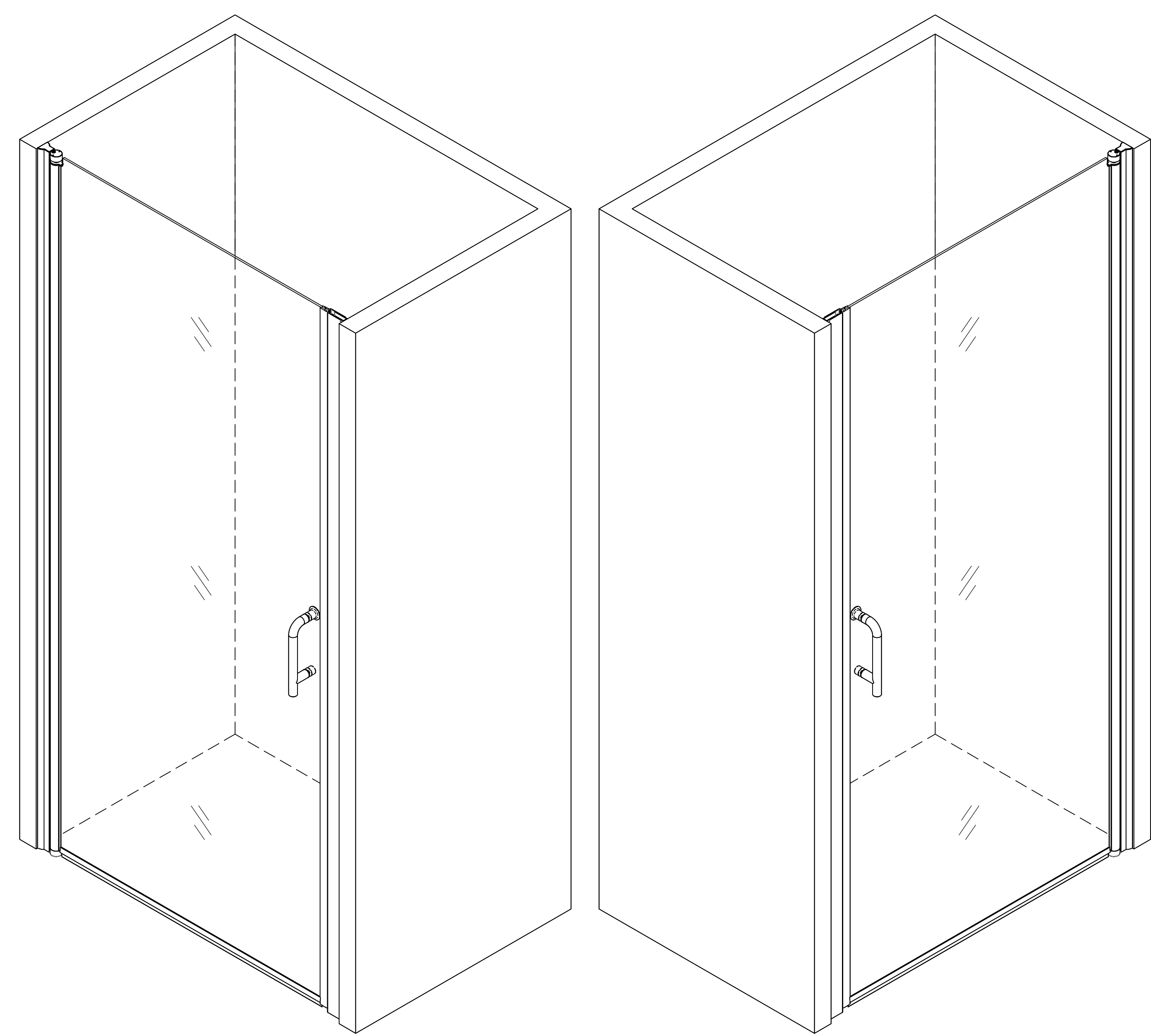


Shower Door Installation Instructions



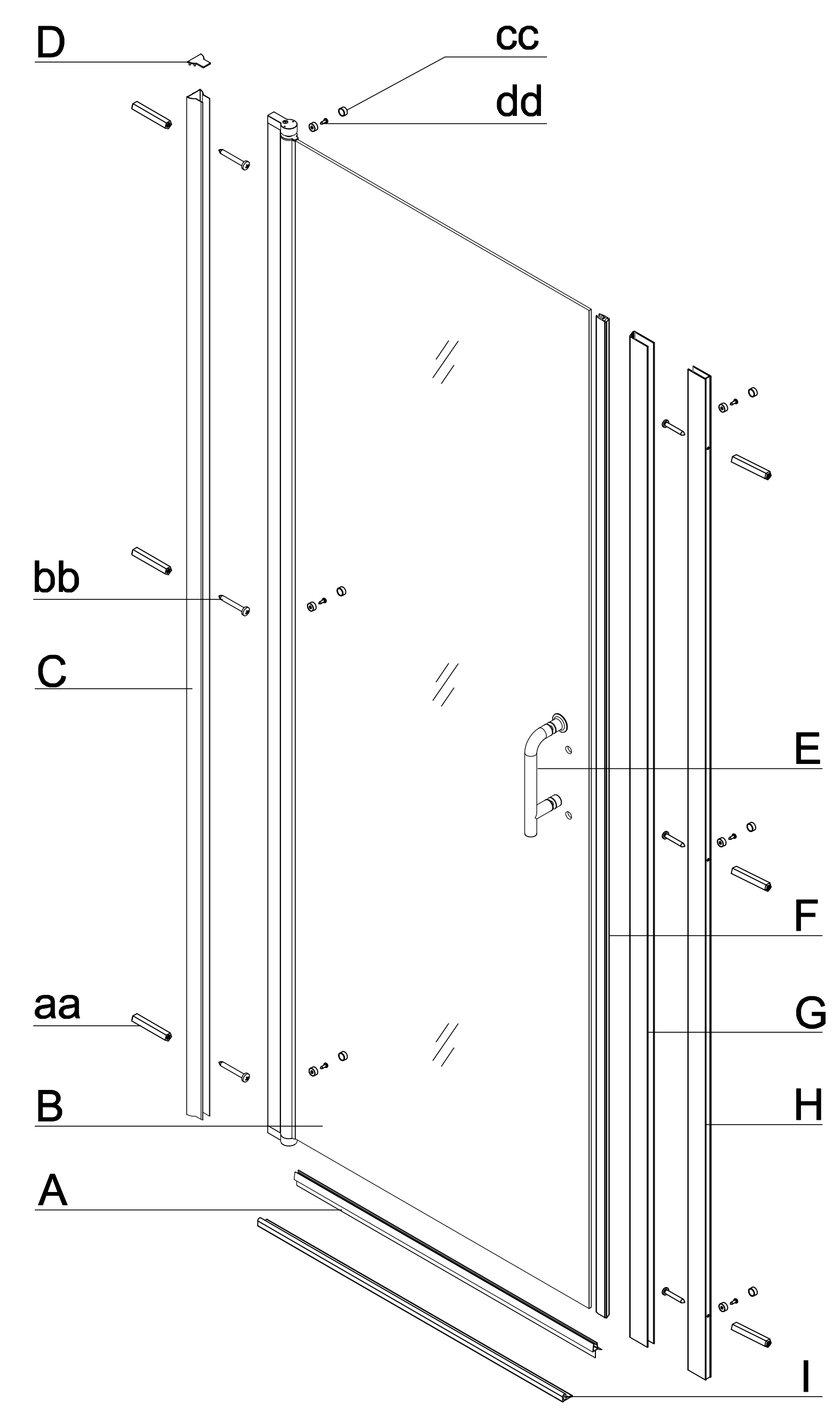
! Reversible For a Left or Right Door

Shower Door Installation Instructions



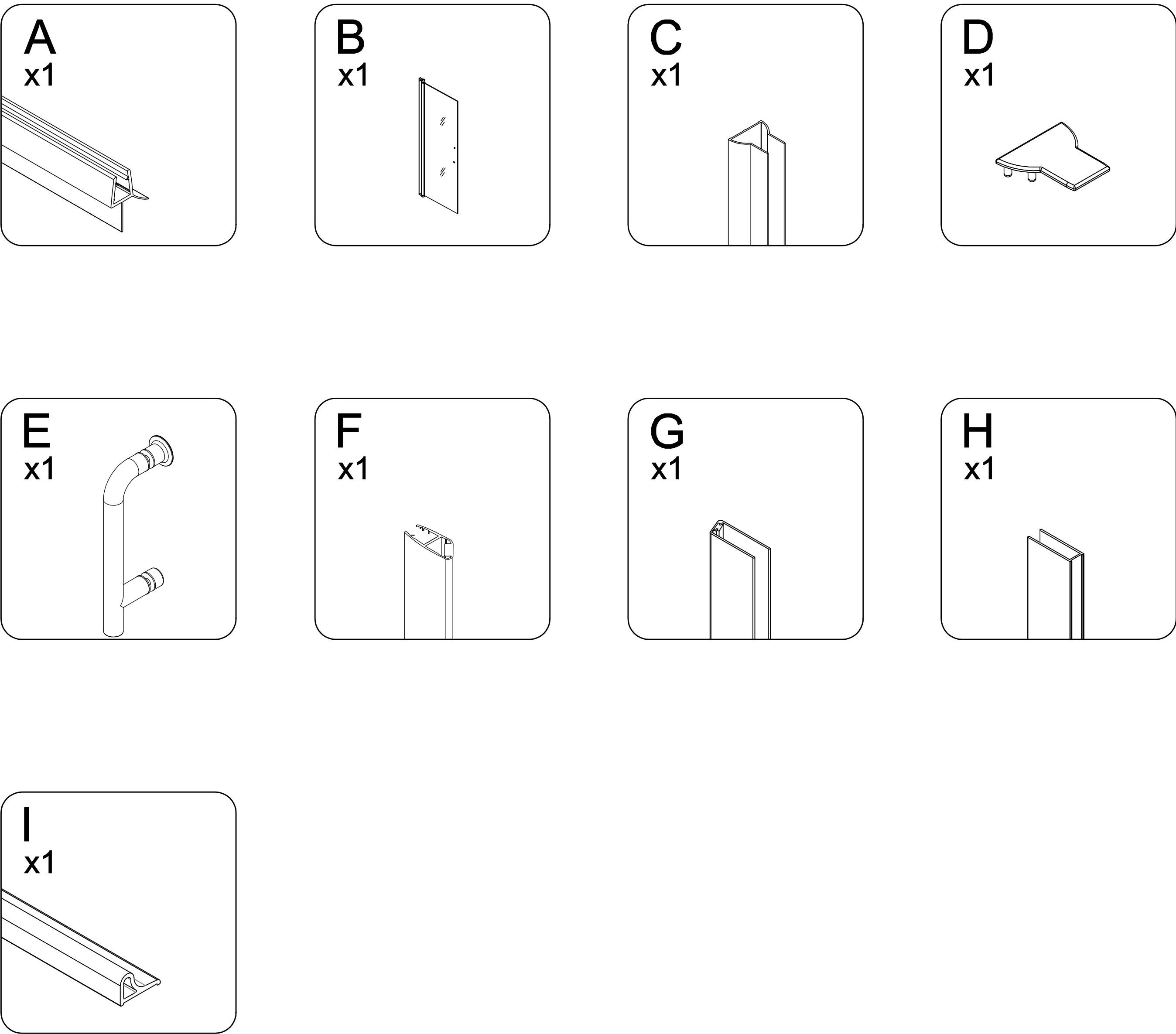
! Reversible For a Left or Right Door

PACKAGE CONTENT

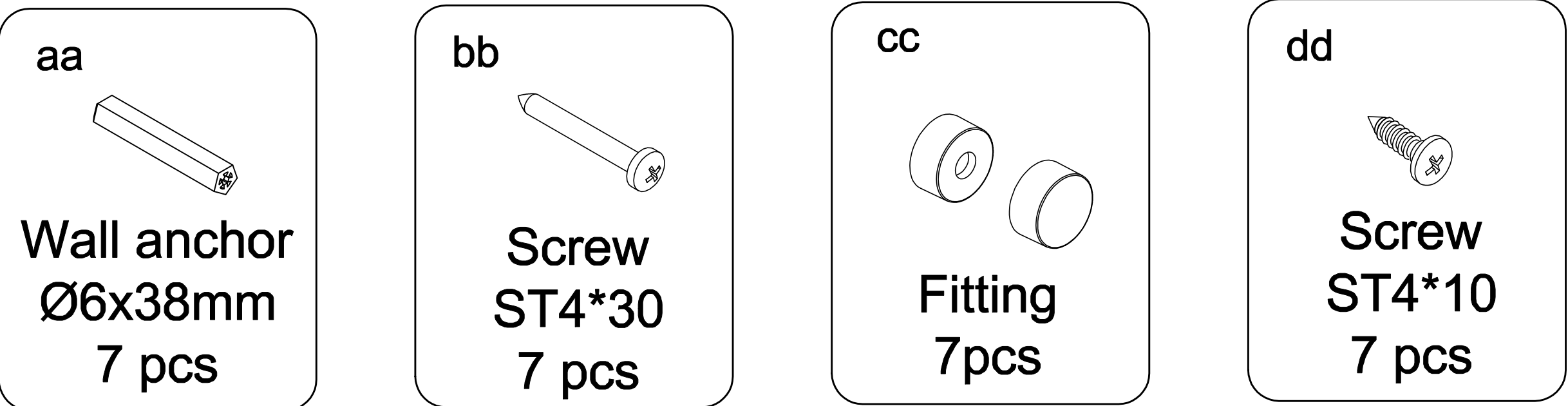


PACKAGE CONTENT					
PART#	DESCRIPTION	QTY	PART#	DESCRIPTION	QTY
A	Bottom Gasket	1	F	Magnetic strip	1
B	Door panel	1	G	Magnetic Seal Aluminum channel	1
C	Wall Jamb	1	H	U channel	1
D	Top Cover Cap	1	I	Alu. Threshold	1
E	Handle	1			

PACKAGE CONTENT

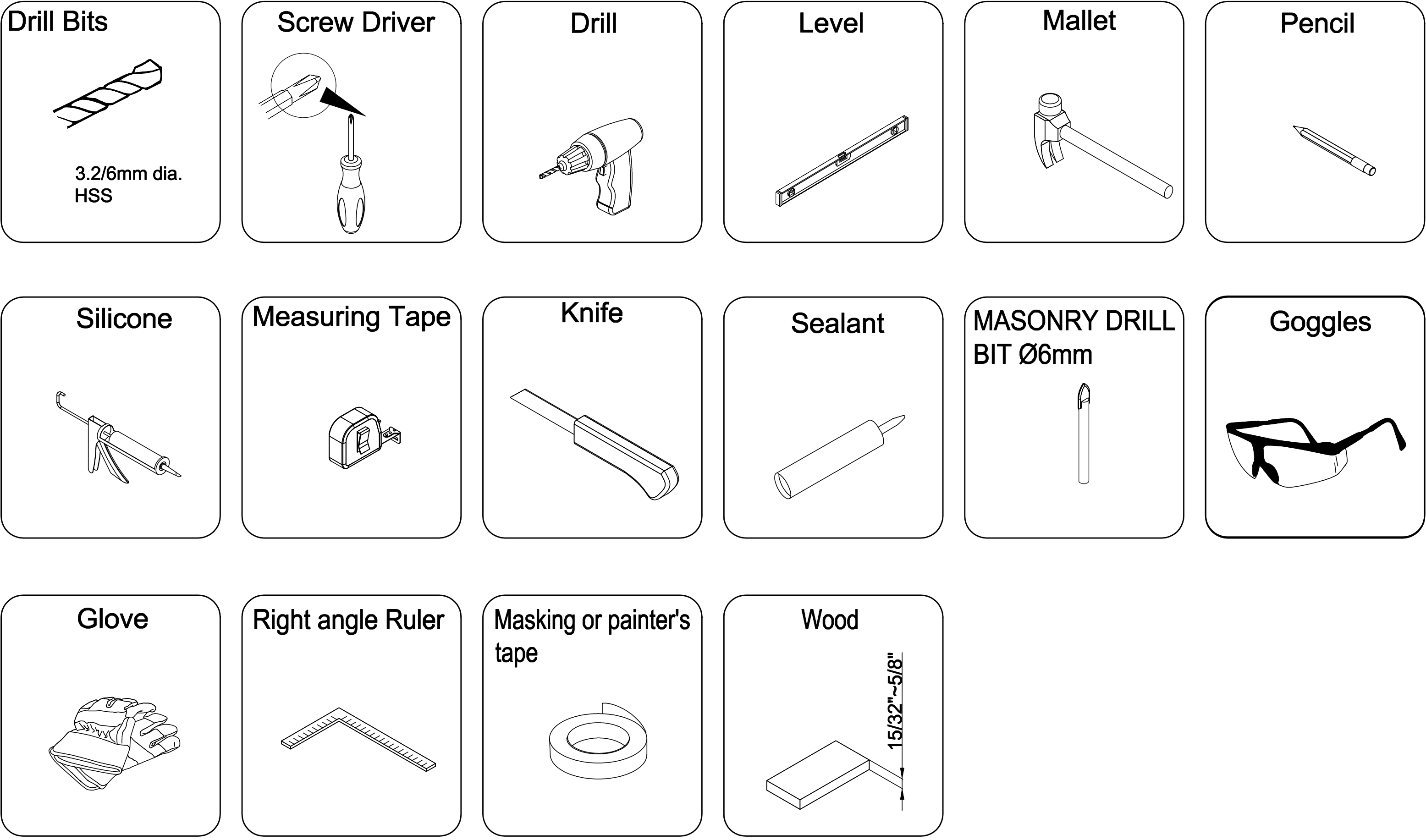


HARDWARE CONTENT



! 1 piece for each as spare part.

TOOLS REQUIRED



SAFETY INFORMATION

CAUTION

Please carefully read the following important safety information before handling or installing this shower. There is a risk of serious injury while handling this product. To minimize these risks, please note:

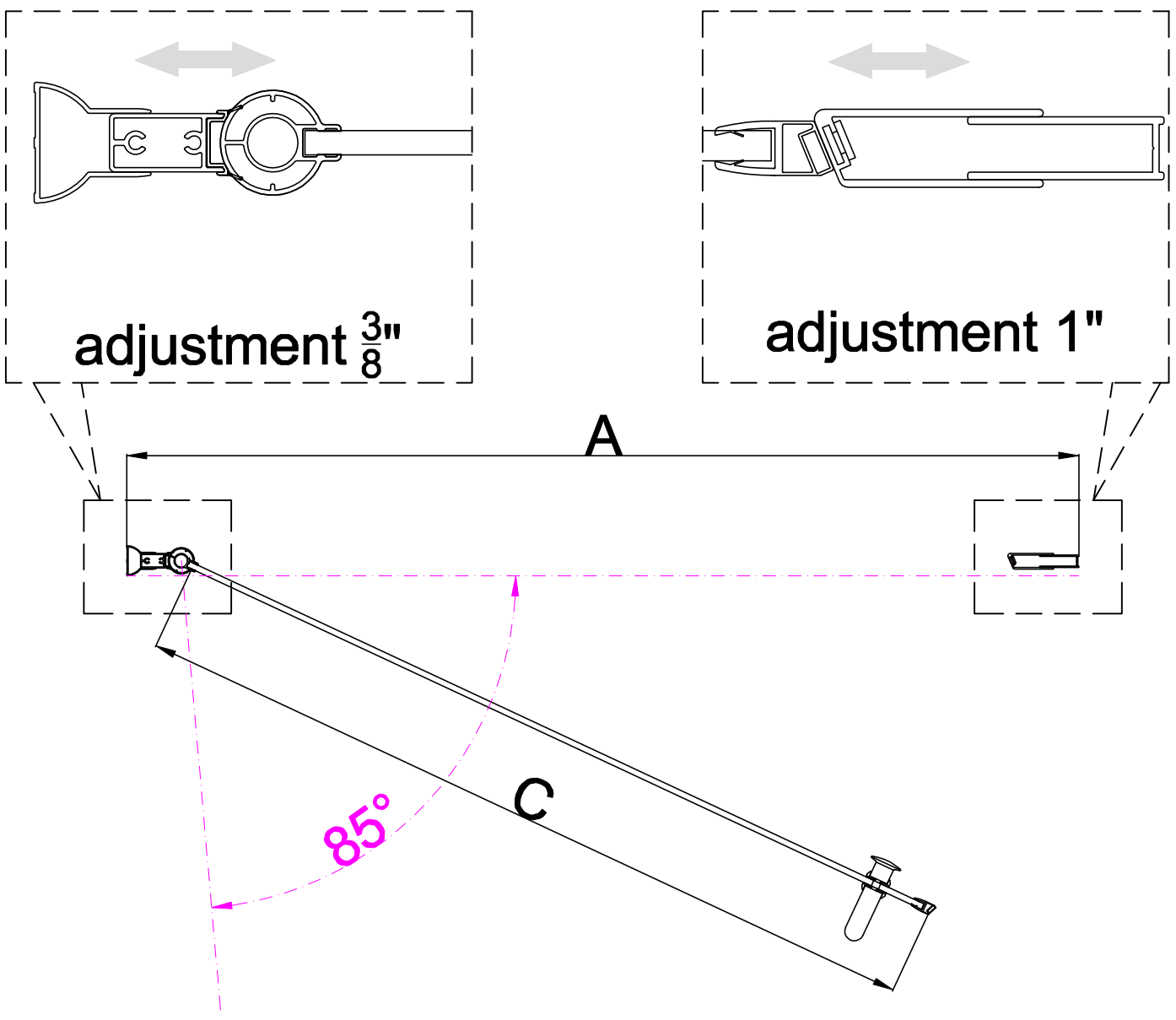
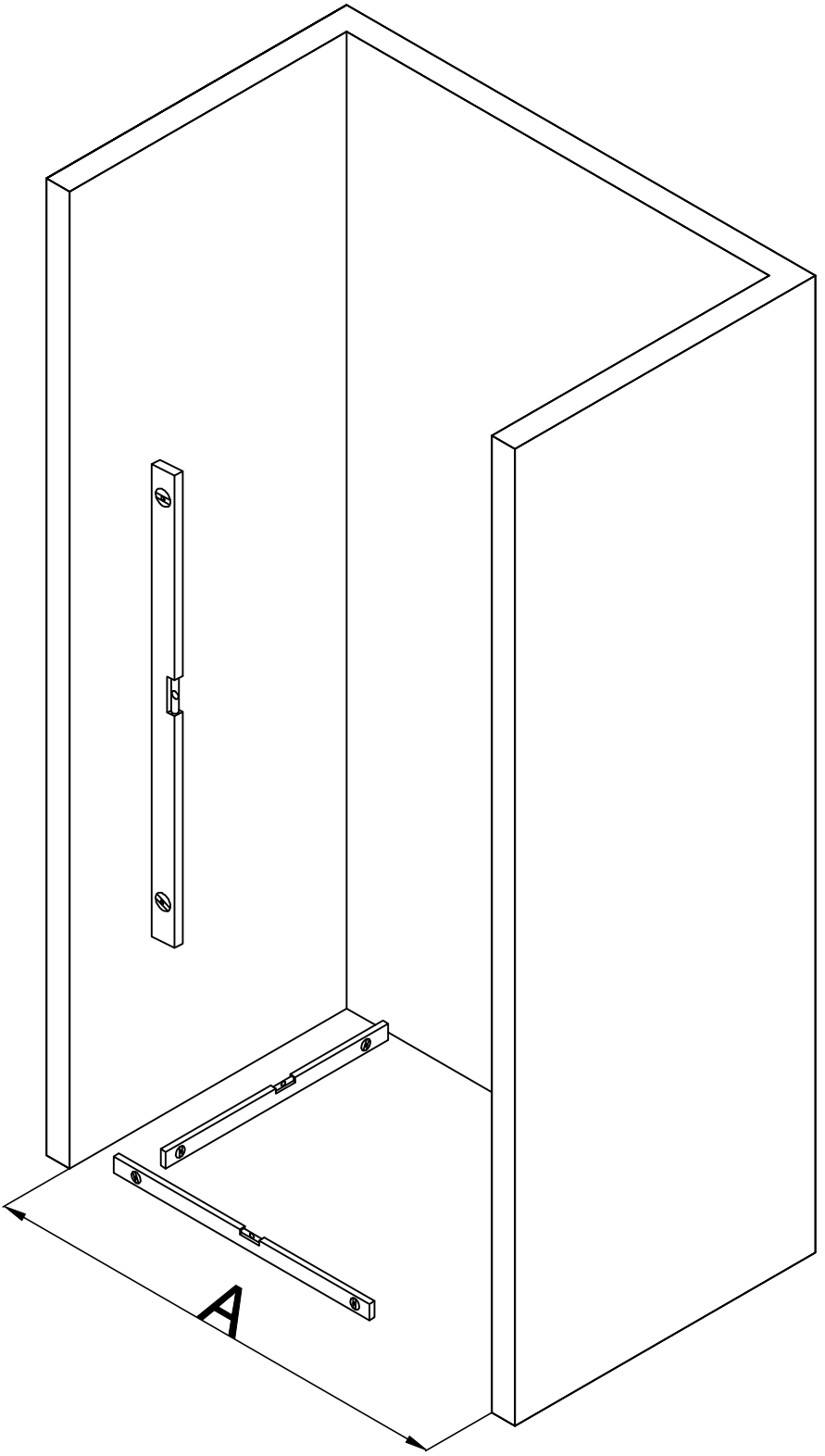
- Always wear safety glasses and gloves while handling.
- Always read and follow all the steps in the installation instructions.
- Inspect all contents and glass for damage before installation.
- Extreme caution should be taken while handling the glass during installation as the tempered glass may shatter if in contact with a hard surface.
- Handle the tempered glass with caution! Improperly handling the glass can cause it to break suddenly in small pieces (never in pointed fragments).
- Always take all precautions not to touch the tempered glass with any tools during the installation, or after installed.
- Do not cut or modify the tempered glass as it will shatter if cut.
- Carefully remove product from packaging and keep packaging until installation is complete.
- Inspect all parts for damage; if there is damage to the unit prior to installation, please contact customer service at the number provided in this guide.
- Install the shower on a floor that is level and able to accommodate the weight of the unit and an occupant.
- Consult local building codes and compliance standards prior to installation and ensure conformity.
- After installation, and from time to time, check the glass for fit and finish to ensure that nothing has come loose since installation.
- Keep this installation manual for future reference.

NOTE: Heavy product ! You will need at least two people to install this unit properly.

1

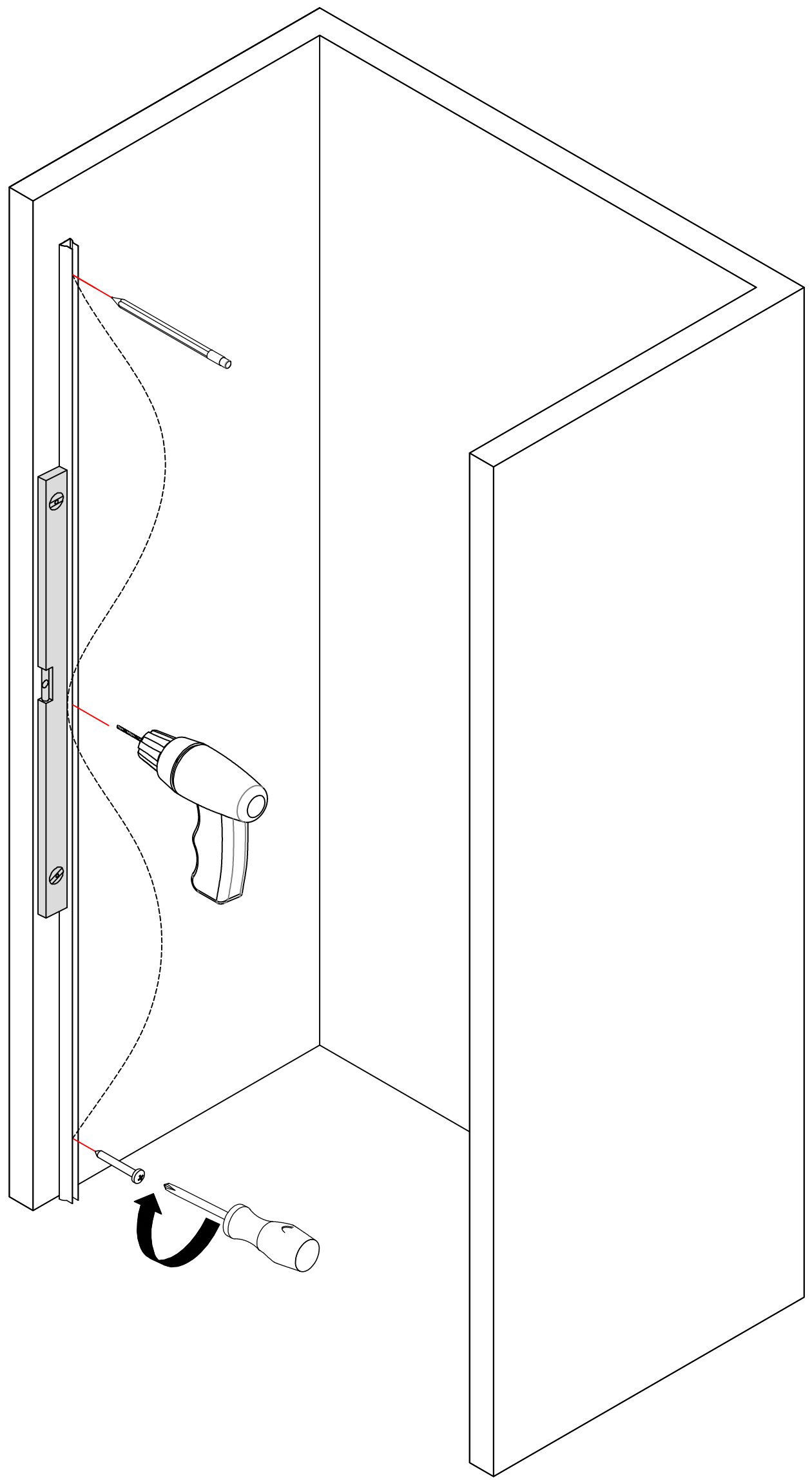
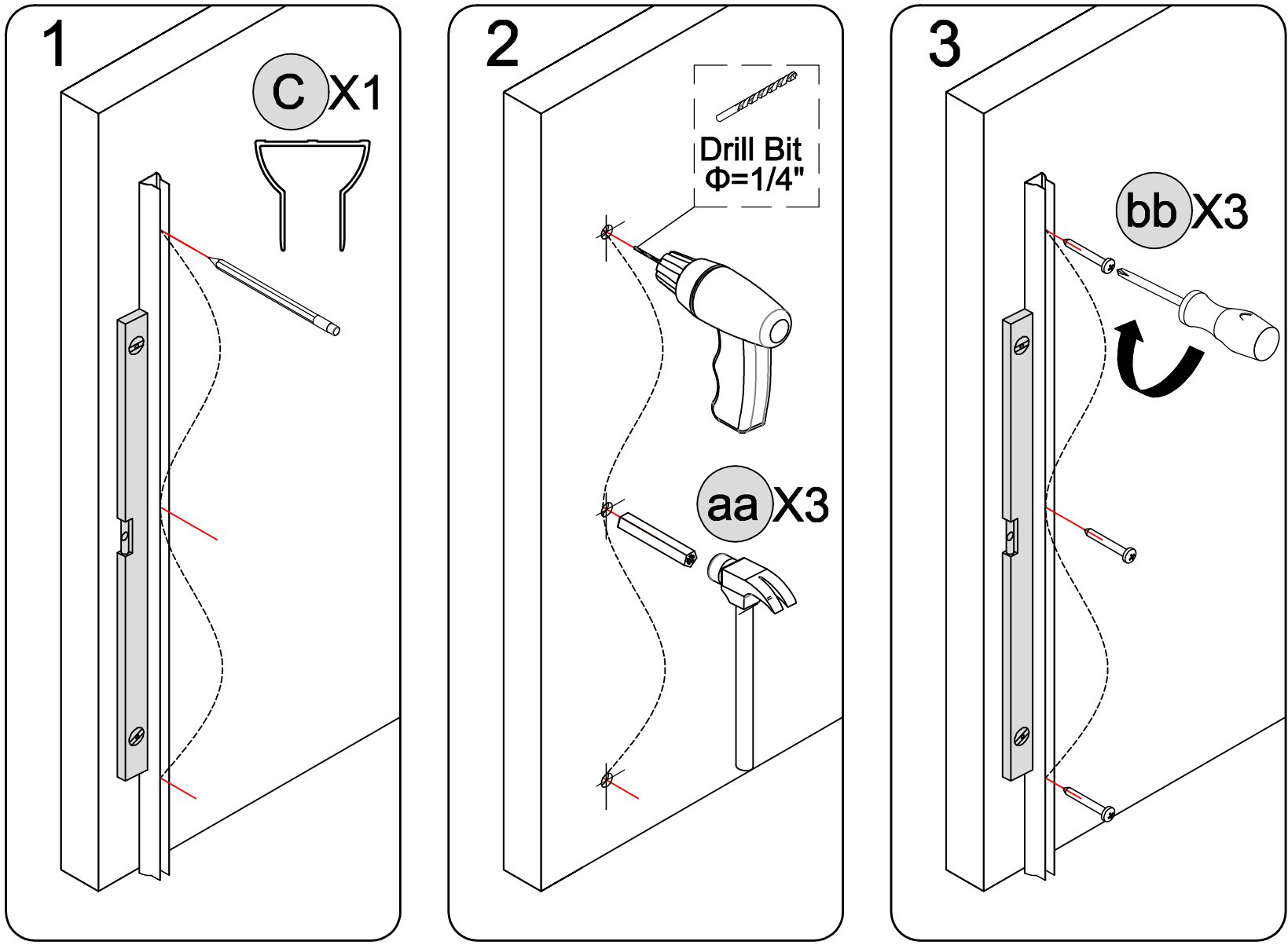
Level

Model	A (width)	C (Opening)
30"	30" ~31 3/8"	25 19/32"
32"	32" ~33 3/8"	27 19/32"
34"	34" ~35 13/32"	29 19/32"
36"	36" ~37 3/8"	31 5/8"

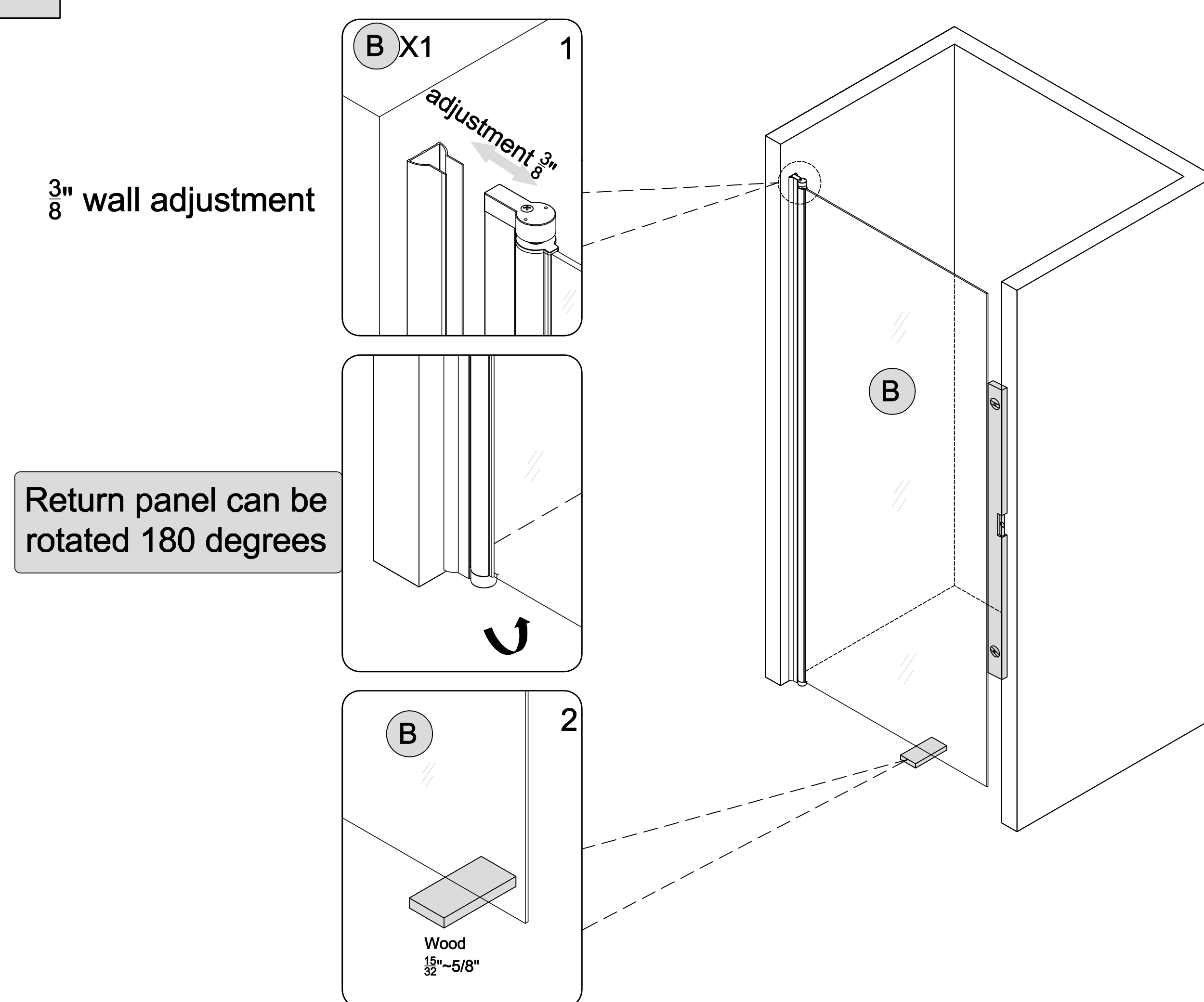


2

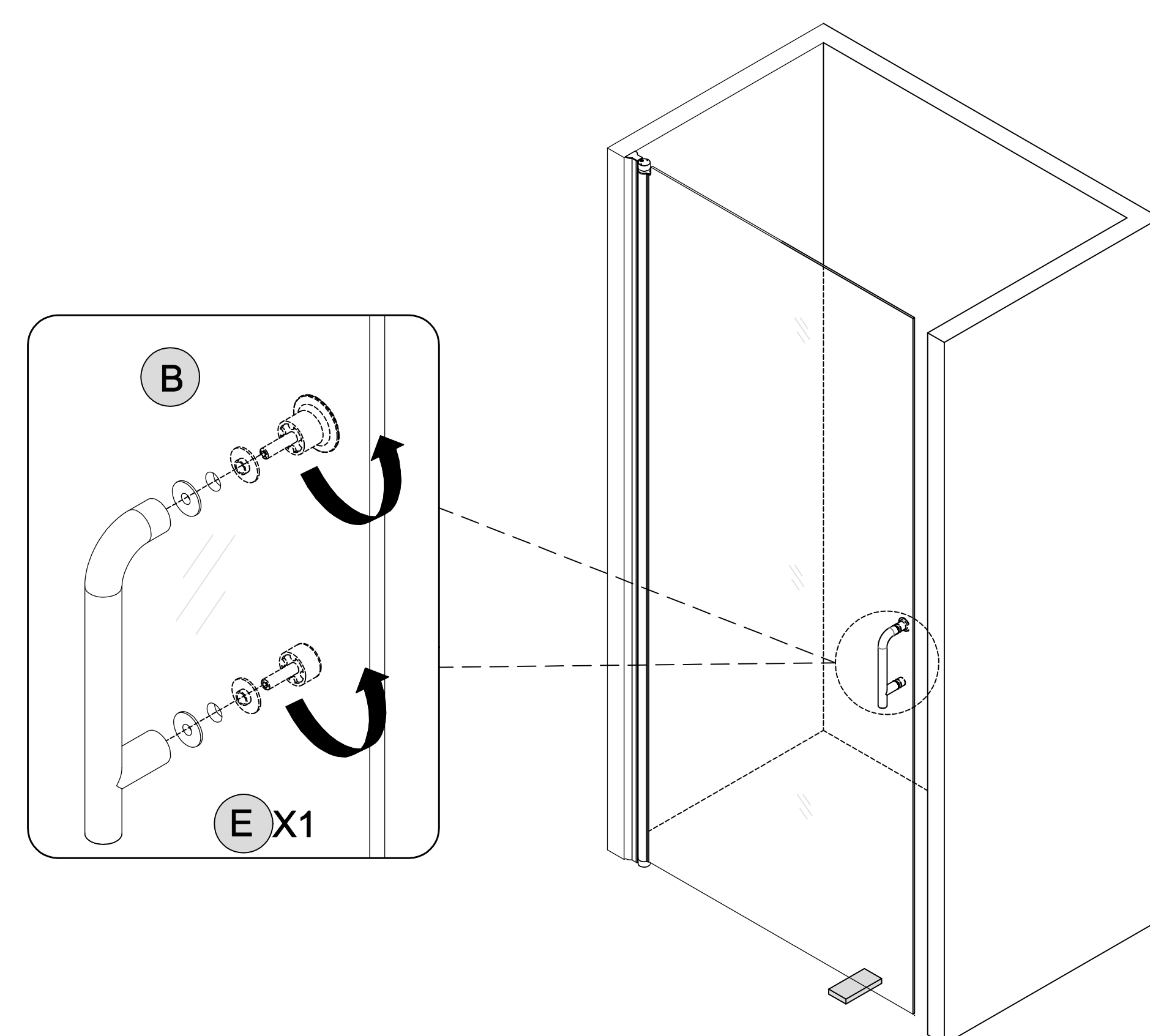
Wall Jamb Installation



3 Door panel Installation

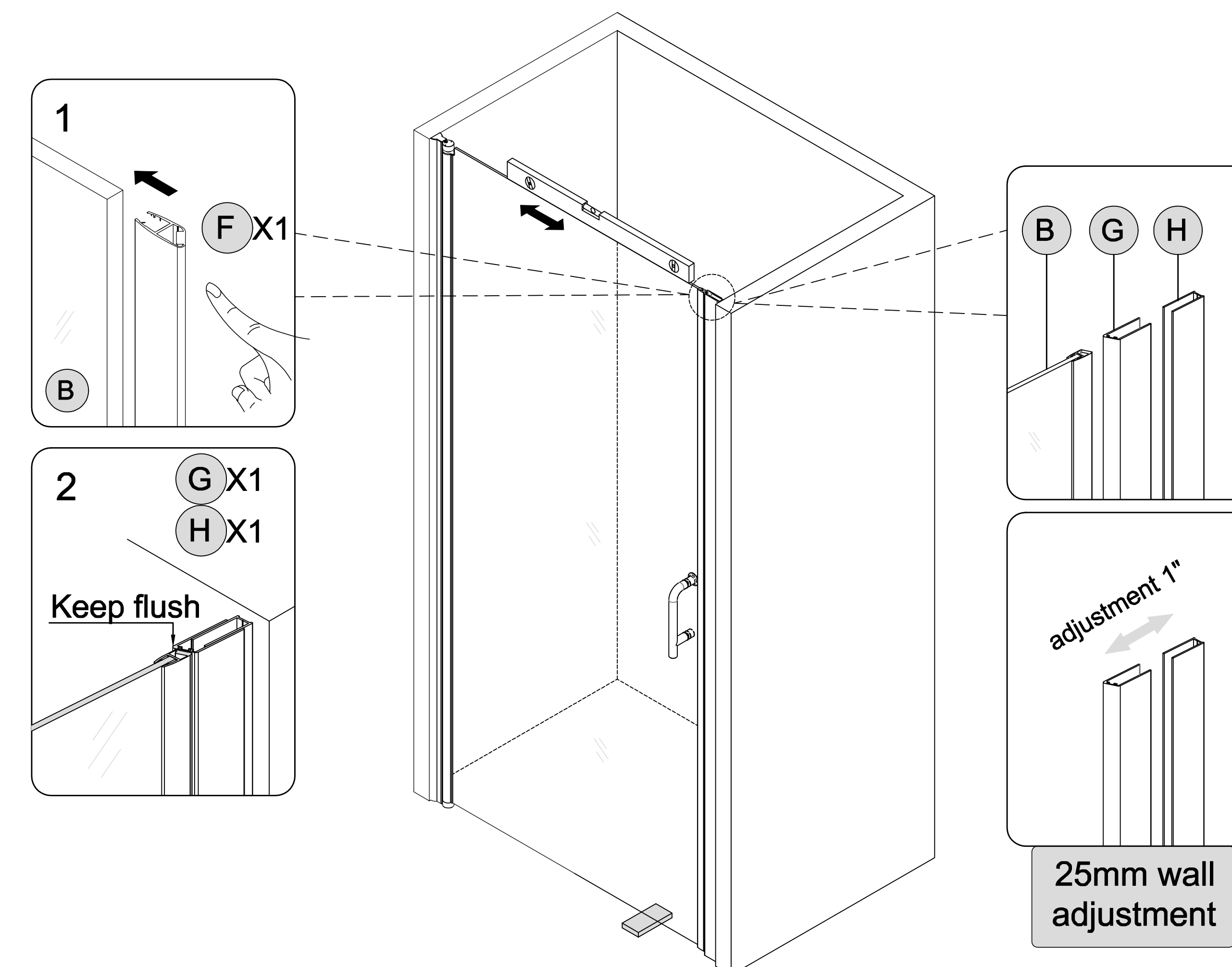


4 handle Installation

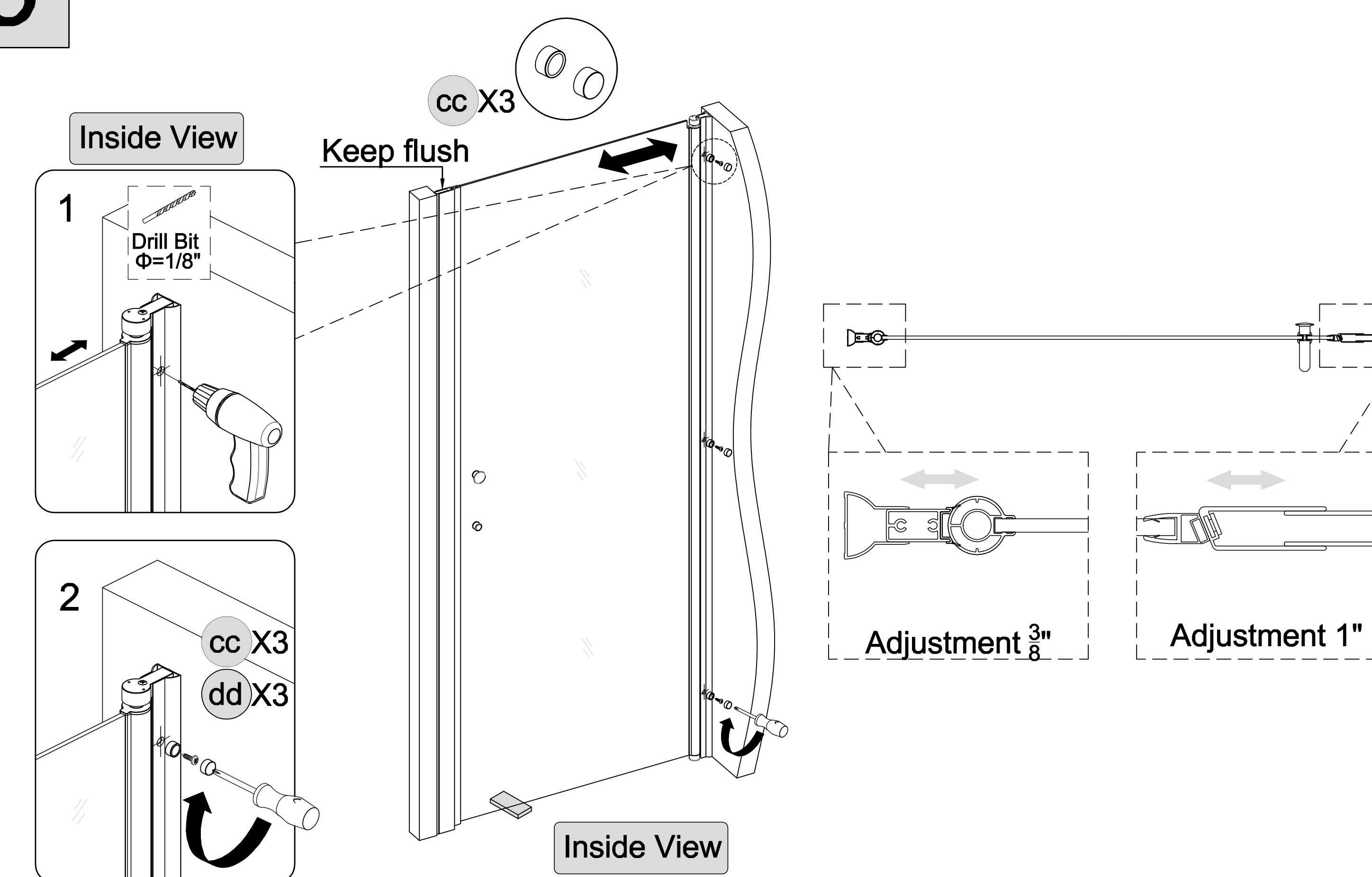


6

5 Magnetic strip Install to door panel



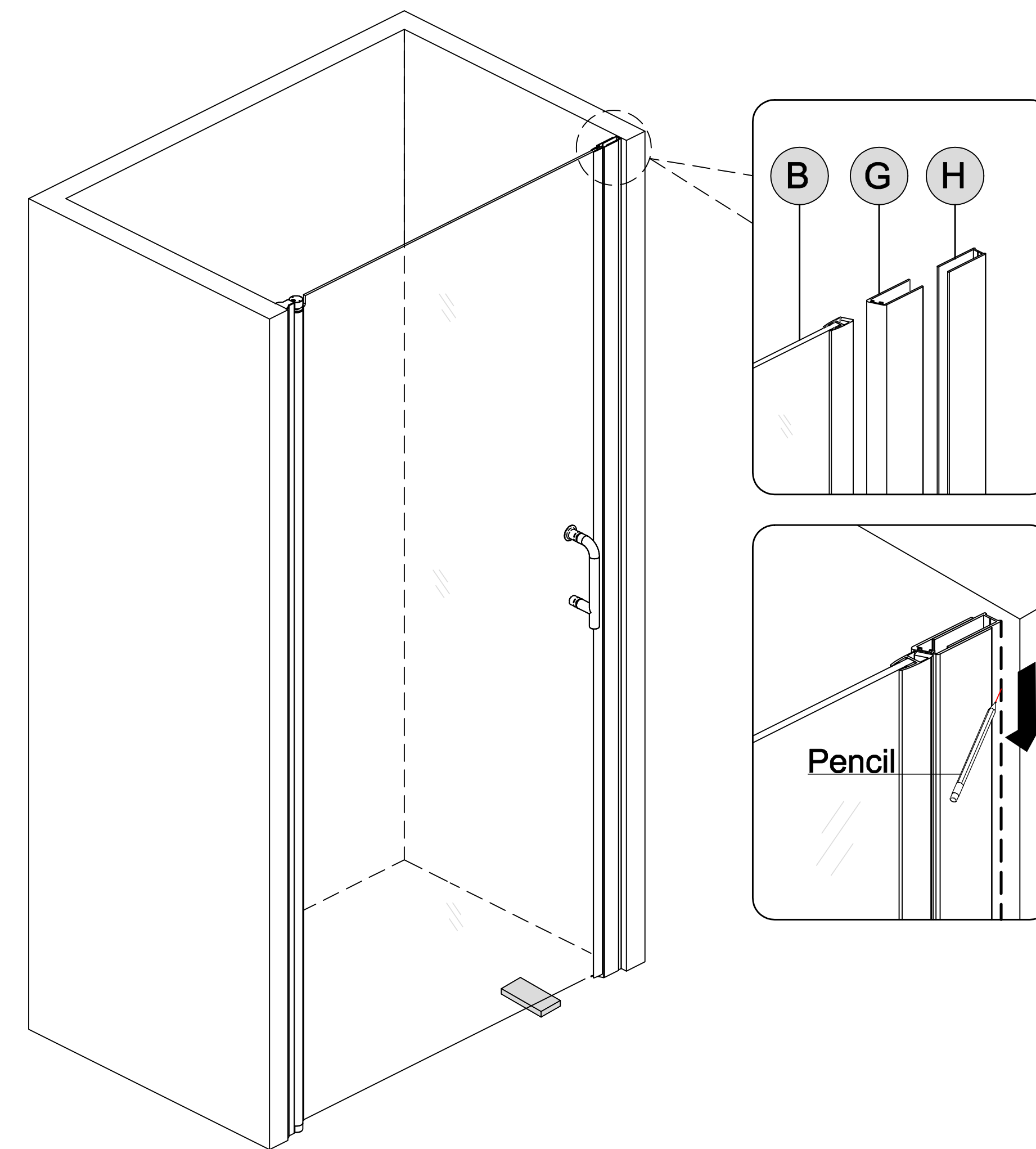
6 Fasten the door panel



7

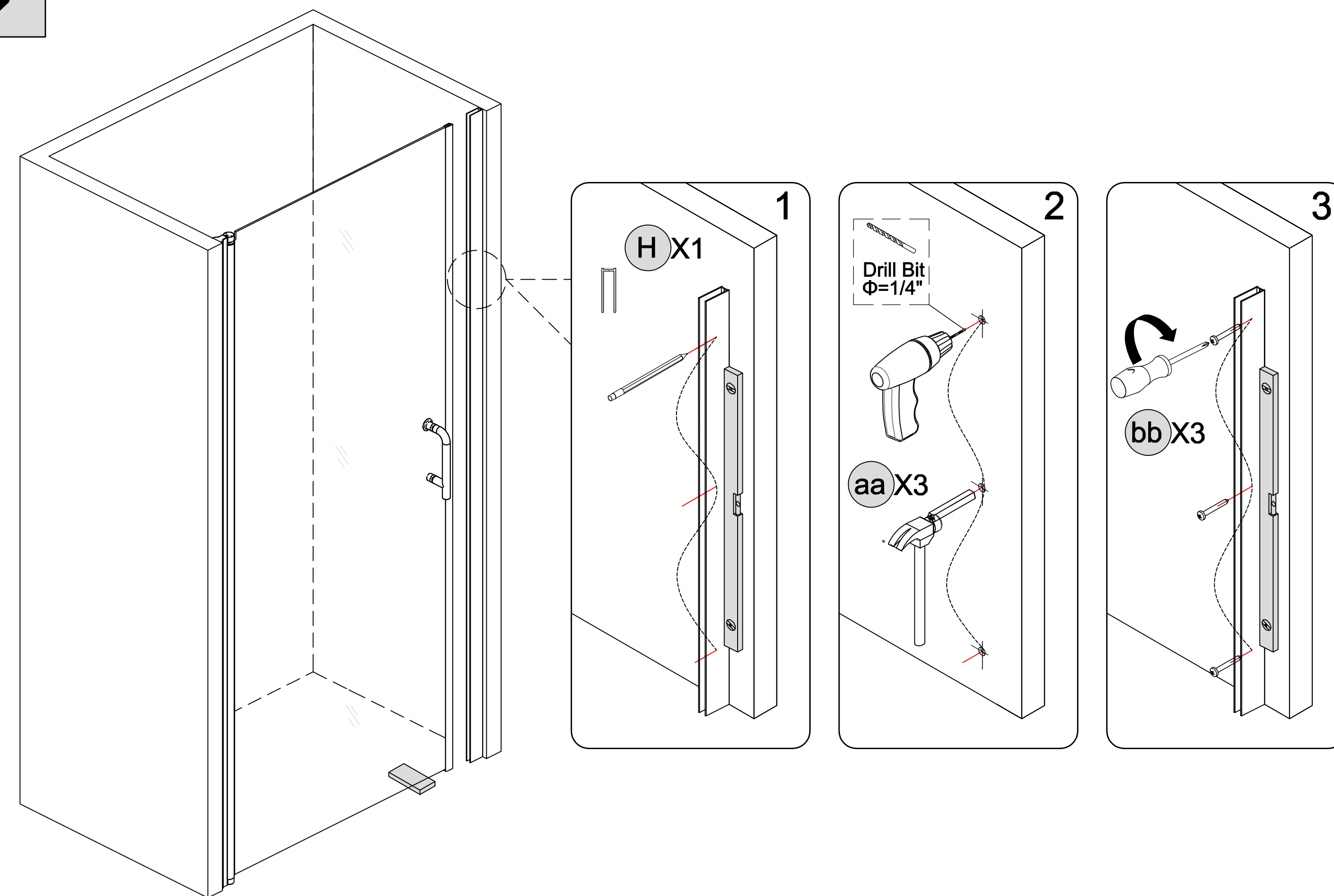
7

Determine the G & H position



8

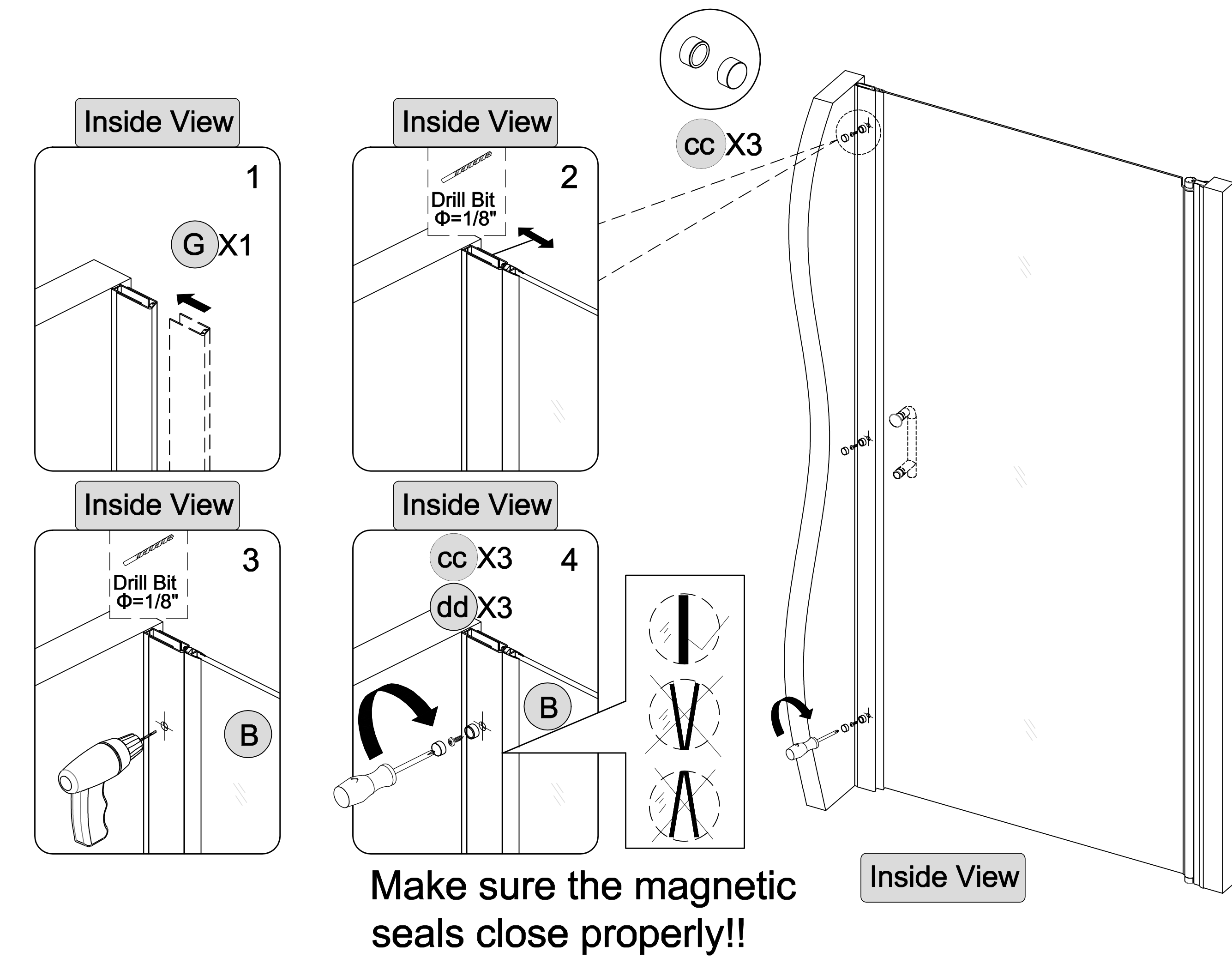
U channel Installation



8

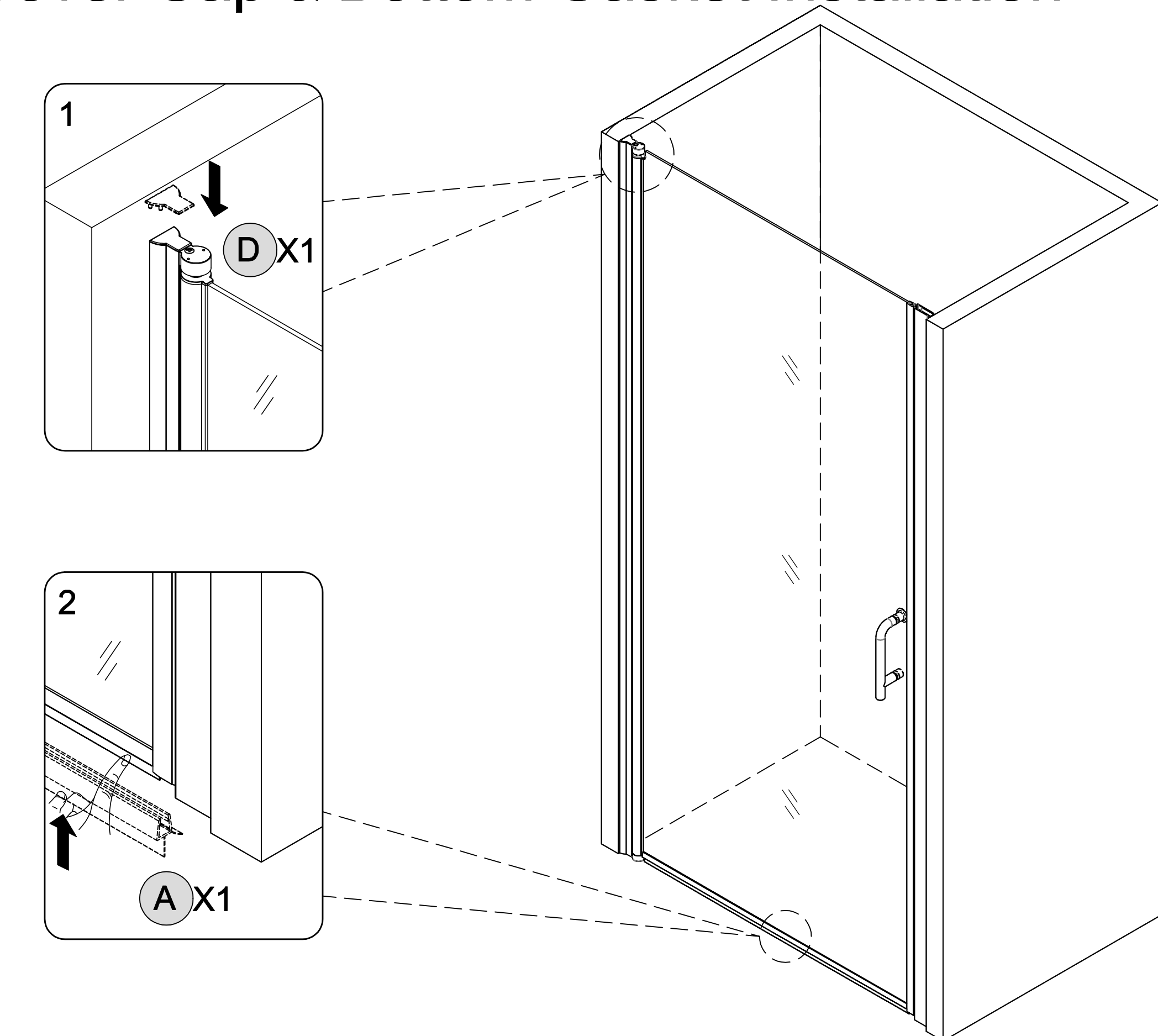
9

Magnetic Seal Wall Jamb Installation



10

Top Cover Cap & Bottom Gasket Installation

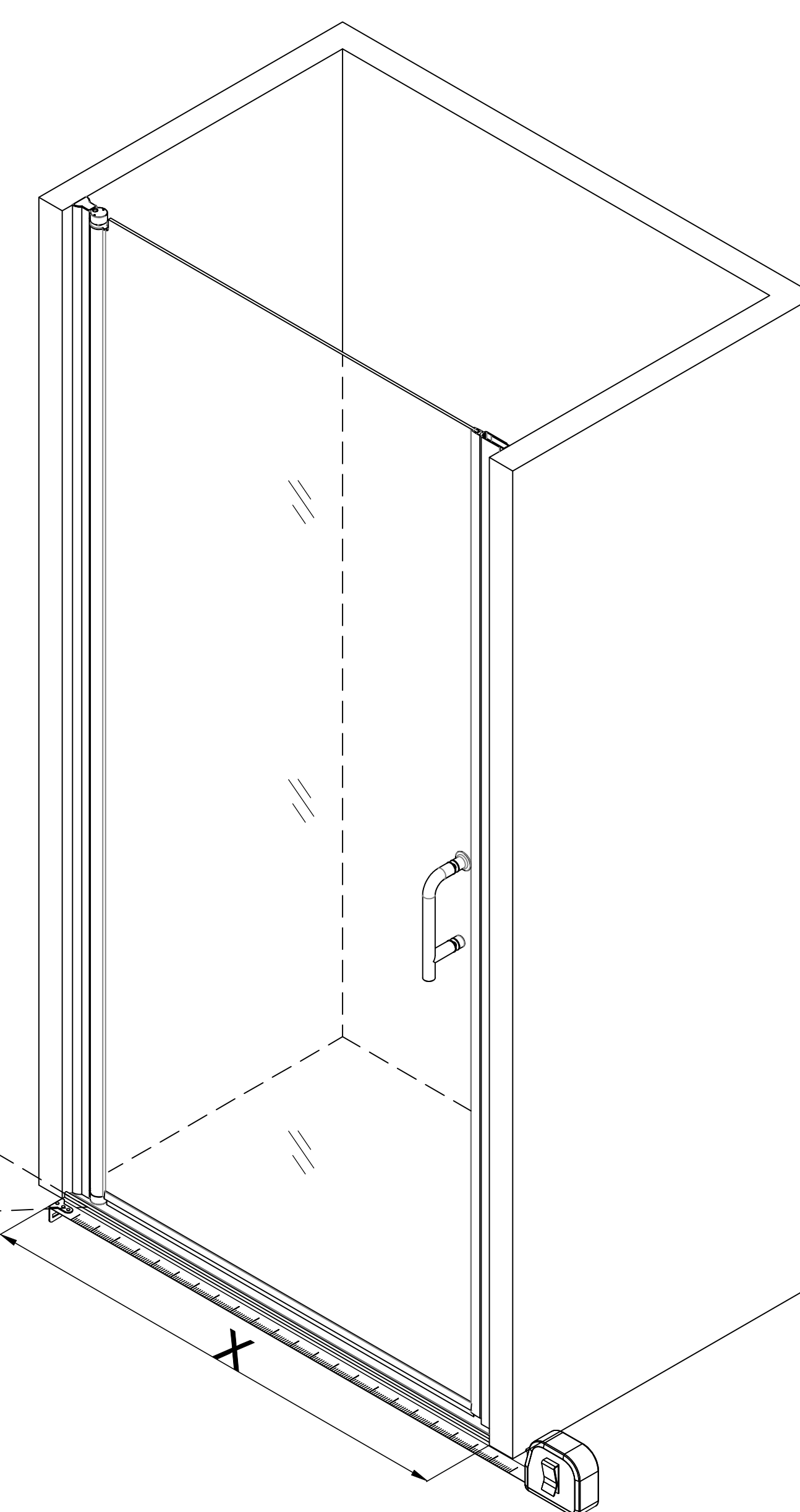
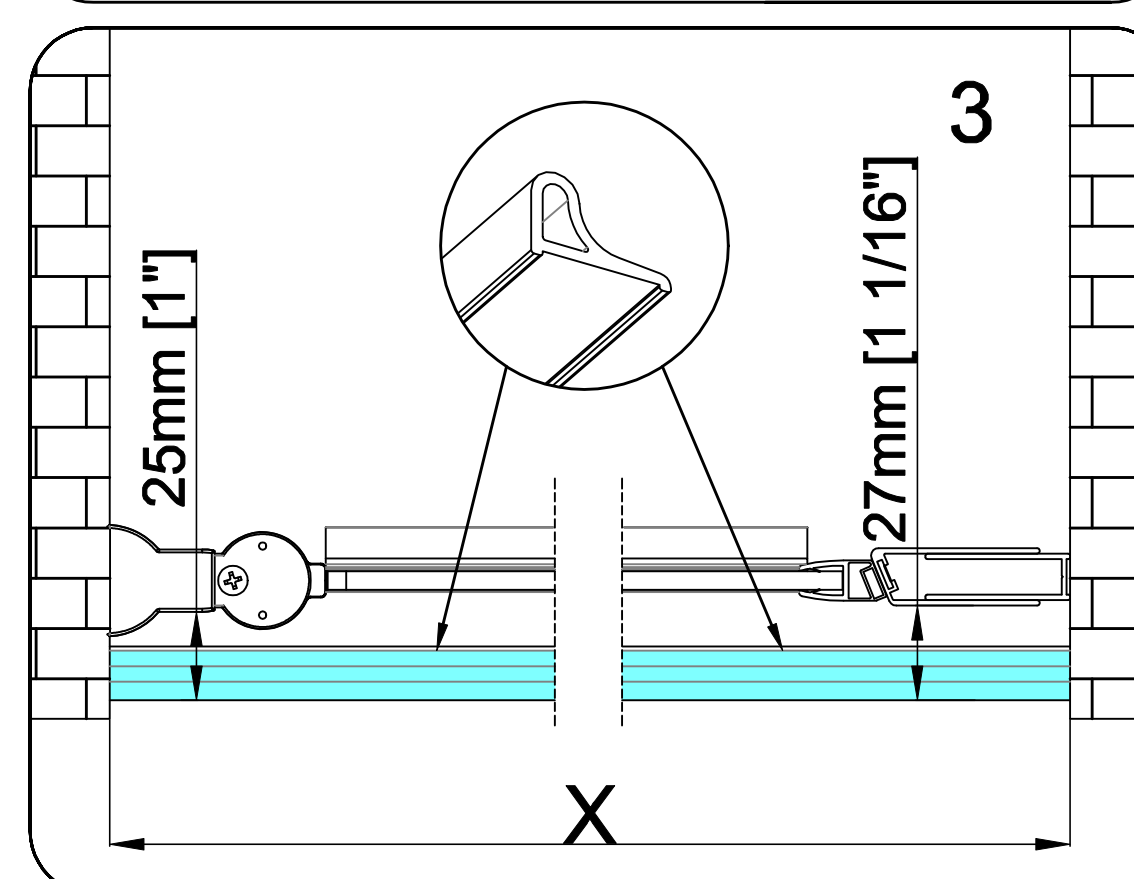
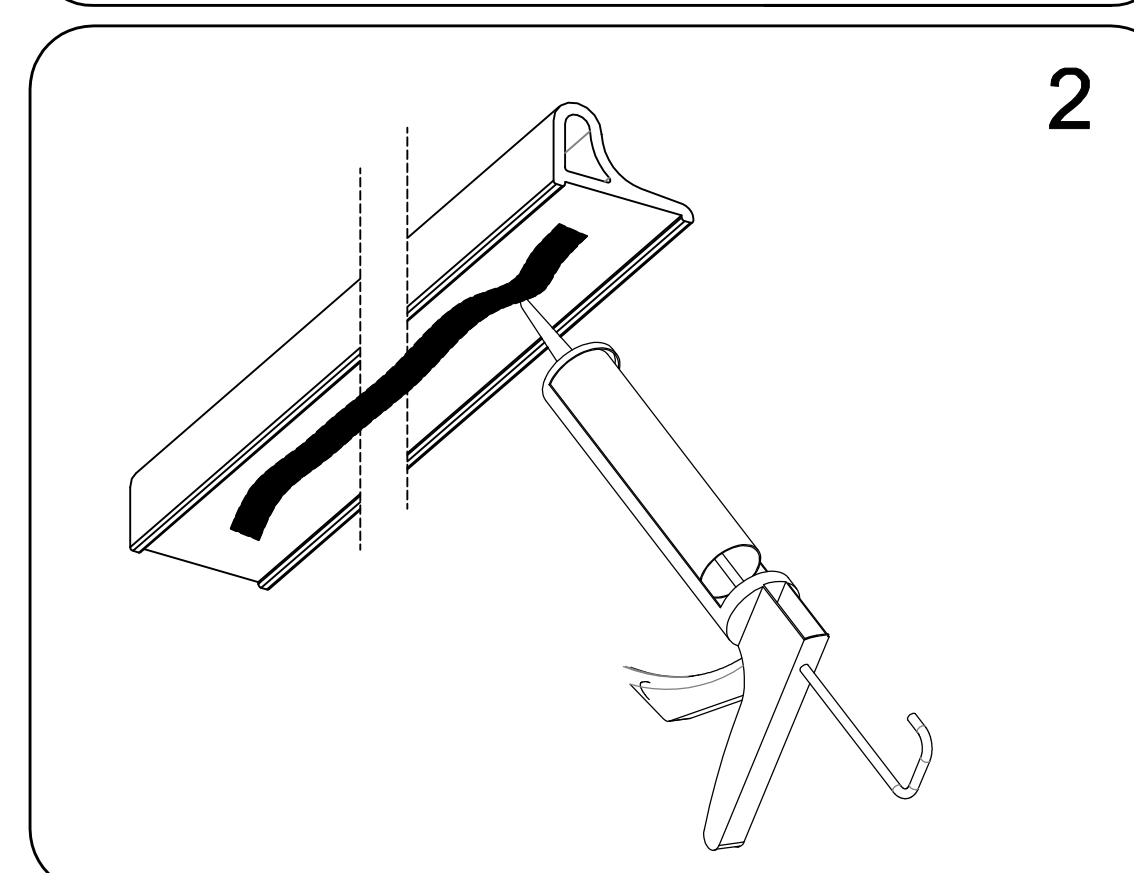
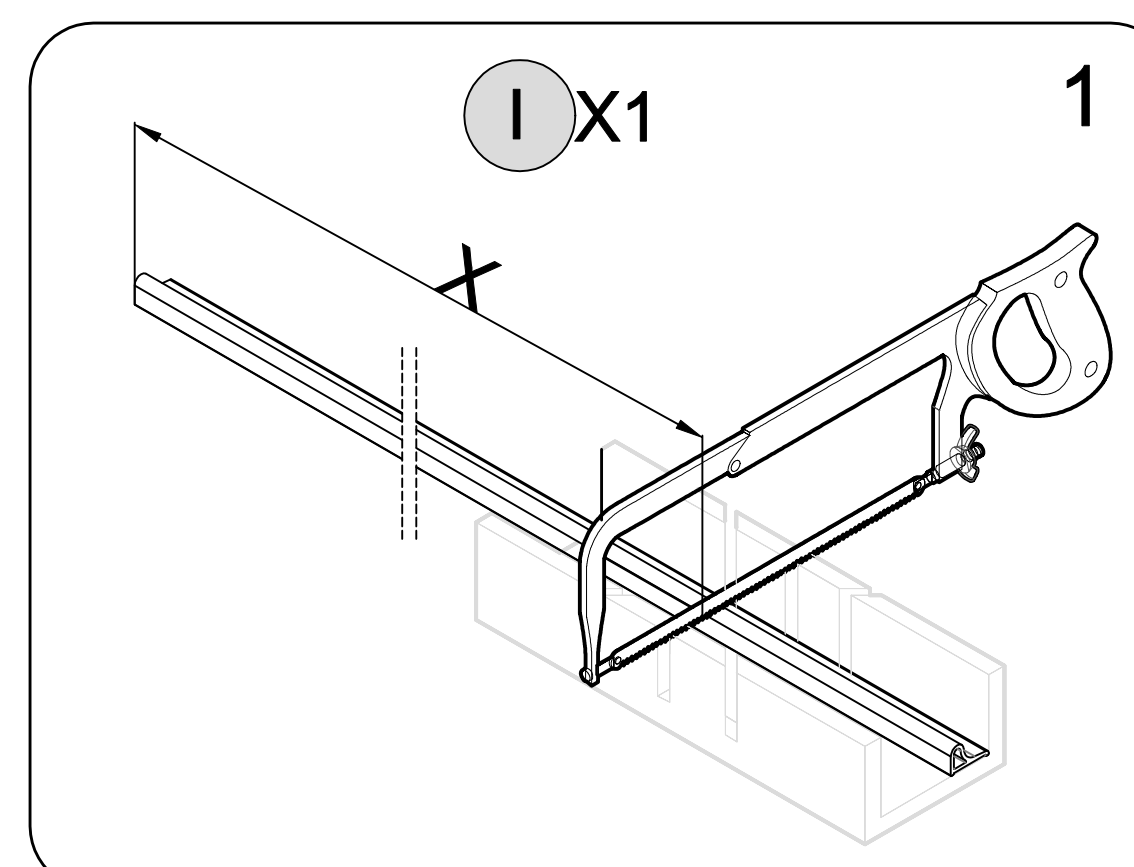


9

11

Alu.Threshold Installation

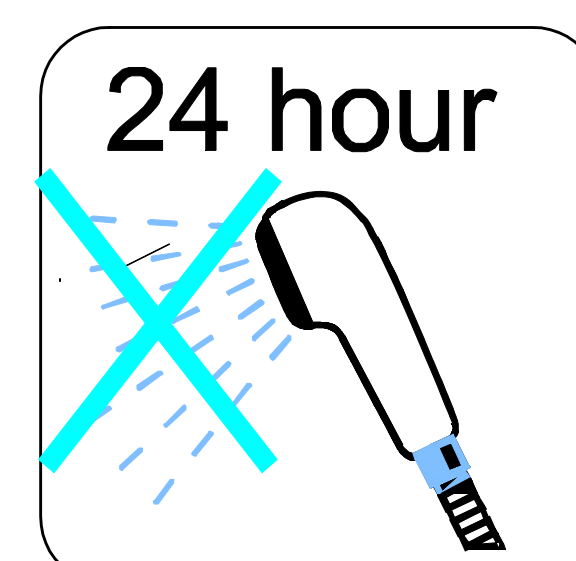
Measure "X" and cut the alu threshold same length as "X".



12

SEALING

Ensure that the Shower door closes tightly and opens smoothly.
Apply a good quality silicone sealant along the wall Jamb(C)&(H) and Water seal (I) .
 Allow 24 hours for silicone to dry before use.



! Apply Silicone Sealant, (not supplied).

