

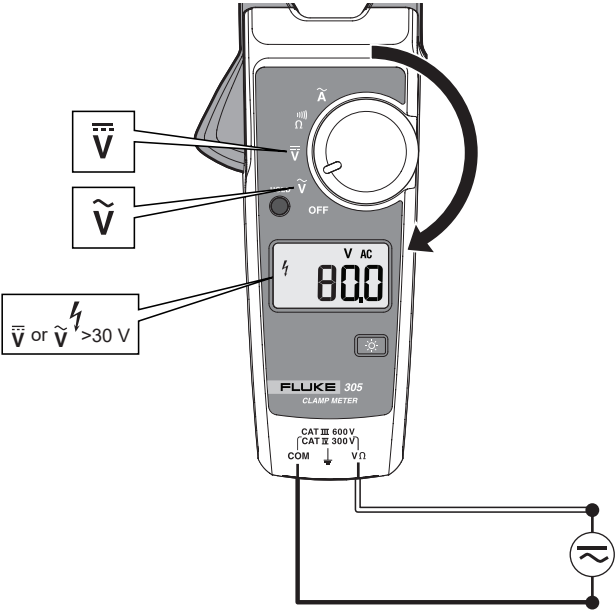
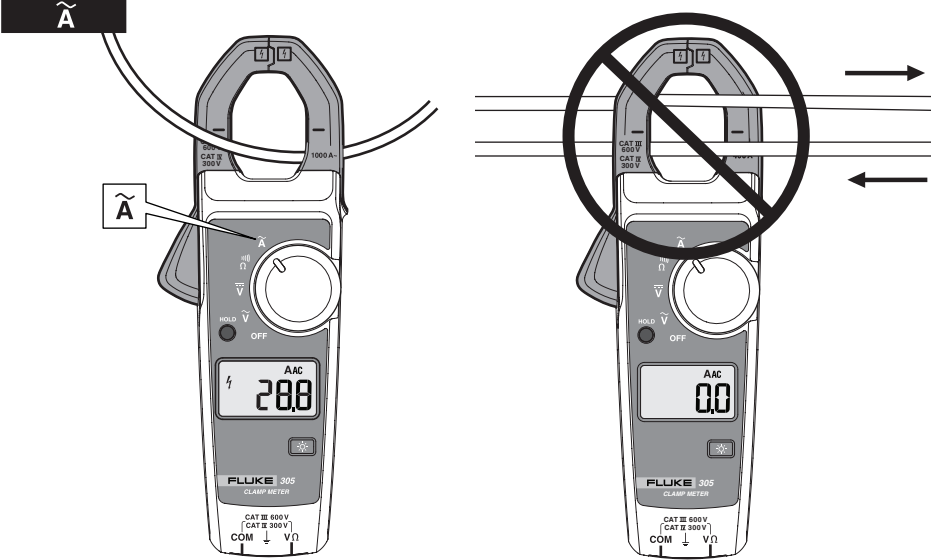
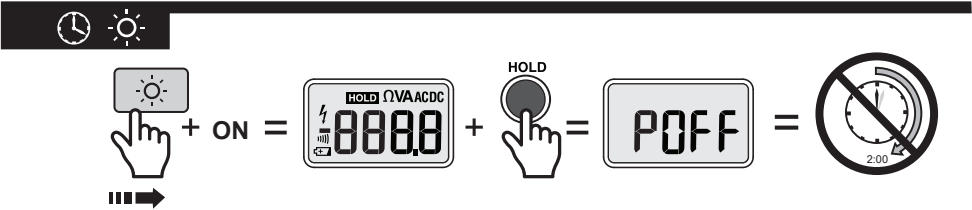
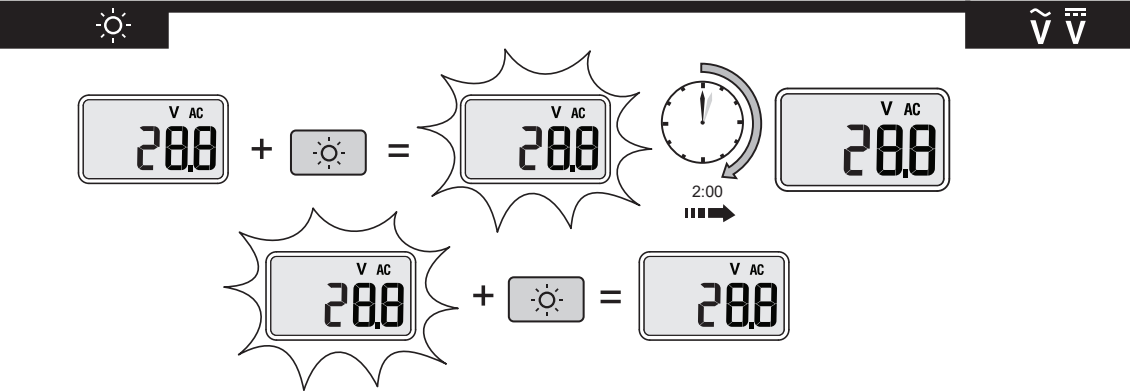
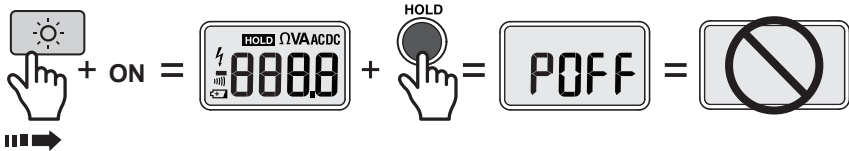
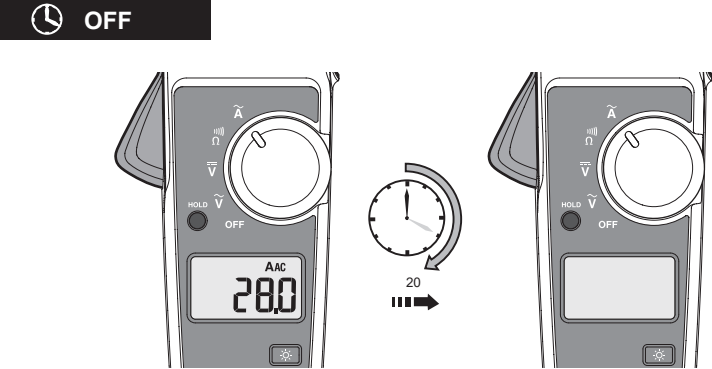
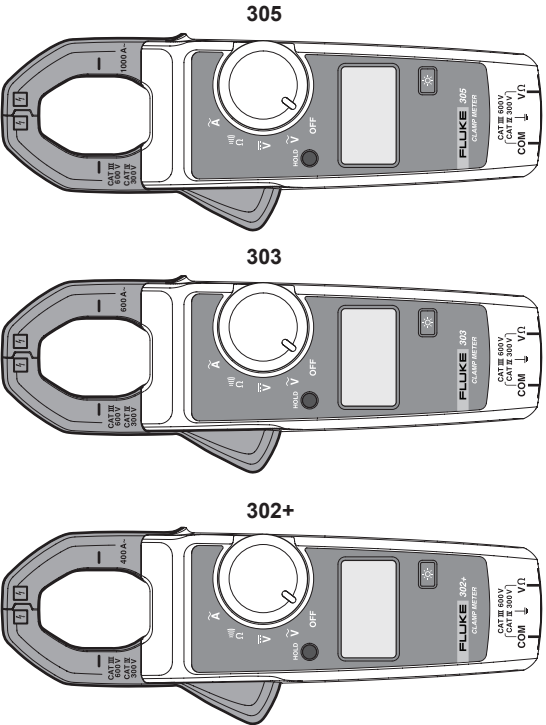
302+/303/305

Clamp Meters

Quick Reference Guide

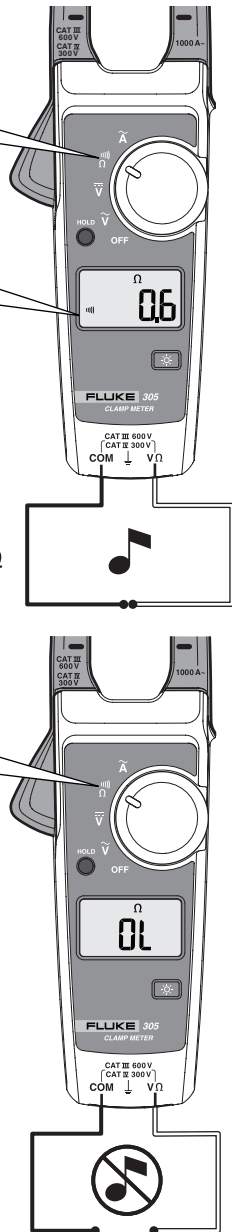
⚠ Warning

To prevent possible electrical shock, fire, or personal injury, read the “302+/303/305 Safety Sheet” before you use this Product.

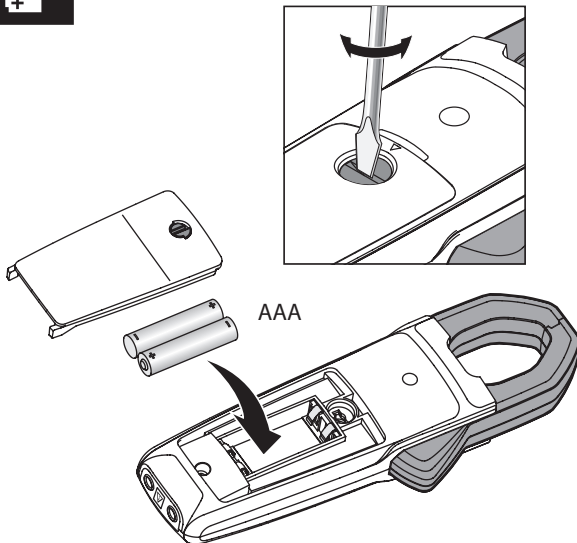
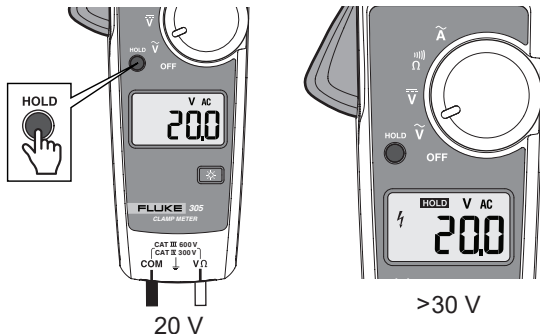




302+ <70  $\Omega$   
303/305 <70  $\Omega$



HOLD



## Specifications

### Electrical Specifications

Batteries ..... 2 AAA, IEC LR03

#### AC Current (Jaw)

Range	302+ ..... 400.0 A
	303 ..... 600.0 A
	305 ..... 999.9 A
Resolution	..... 0.1 A
Accuracy	302+, 303 ..... 1.8 % $\pm 5$ digits (45 Hz to 65 Hz)
	..... 2.5 % $\pm 5$ digits (65 Hz to 400 Hz)
	305 ..... 1.5 % $\pm 5$ digits (45 Hz to 400 Hz)

*Note* Add 2 % for position sensitivity (305 only).

#### AC Voltage

Range	..... 600.0 V
Resolution	..... 0.1 V
Accuracy	..... 1.5 % $\pm 5$ digits (45 Hz to 400 Hz)

#### DC Voltage

Range	..... 600.0 V
Resolution	..... 0.1 V
Accuracy	..... 1 % $\pm 5$ digits

#### Resistance

Range	..... 400.0 $\Omega$ /4000 $\Omega$
Resolution	..... 0.1 $\Omega$ /1 $\Omega$
Accuracy	..... 1 % $\pm 5$ digits
Continuity Beeper	..... $\leq 70 \Omega$

### Mechanical Specifications

Size (L x W x H)	..... (207 x 75 x 34) mm
Weight	302+, 303 ..... 265 g
	305 ..... 205 g

### Environmental Specifications

Operating Temperature	..... 0 °C to +40 °C
Temperature Coefficients	..... Add 0.1 x specified accuracy for each °C above 28 °C or below 18 °C
Storage Temp	..... -30 °C to +60 °C (limited by battery specification)
Operating Humidity	..... Non condensing (<10 °C) ..... $\leq 90$ % RH (at 10 °C to 30 °C) ..... $\leq 75$ % RH (at 30 °C to 40 °C)
Operating Altitude	..... 2 000 meters
Storage Altitude	..... 12 000 meters
Safety	..... IEC 61010-1, Pollution Degree 2 ..... IEC 61010-2-032: CAT IV 300 V / CAT III 600 V ..... IEC 61010-2-033: CAT IV 300 V / CAT III 600 V
Ingress Protection	..... IEC 60529: IP30

### Electromagnetic Compatibility (EMC)

International IEC 61326-1: Portable, Electromagnetic Environment, IEC 61326-2-2

CISPR 11: Group 1, Class A

*Group 1: Equipment has intentionally generated and/or uses conductively-coupled radio frequency energy that is necessary for the internal function of the equipment itself.*

*Class A: Equipment is suitable for use in all establishments other than domestic and those directly connected to a low-voltage power supply network that supplies buildings used for domestic purposes. There may be potential difficulties in ensuring electromagnetic compatibility in other environments due to conducted and radiated disturbances.*

Korea (KCC) Class A Equipment (Industrial Broadcasting & Communication Equipment)

*Class A: Equipment meets requirements for industrial electromagnetic wave equipment and the seller or user should take notice of it. This equipment is intended for use in business environments and not to be used in homes.*

USA (FCC) 47 CFR 15 subpart B. This product is considered an exempt device per clause 15.103.