

5. Press **START/STOP** Button to begin Power Supply function. To stop Power Supply, press button again



UNDERSTANDING DISPLAY	
LED Screen Display	Explanation
4th & 5th Bar Alternate Flashing 	Charger is repairing the battery. See REPAIRING. Additional Indicators:
Charging Light Cycles From Red to Green 	Charger has detected sulfate buildup in the battery, which can limit its effectiveness. This unit has entered desulfation mode in an attempt to fix this issue before resuming charging. Additional Indicators:
All Charge Bars Flash 	Charger was unable to automatically fix and charge the battery. The battery is likely bad. Activate FORCE CHARGE mode to attempt to manually charge the battery. Additional Indicators:
	Unit has entered Stand-by mode due to inactivity. Unit is not charging when standby mode is active.
	Charger is connected to a battery that does not match the charging MODE selected. Additional Indicators:

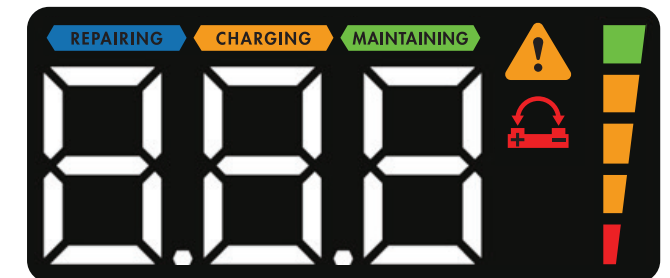
UNDERSTANDING DISPLAY	
LED Screen Display	Explanation
Red and Green Bars Flash in Unison 	Clamps are reversed causing a "Reverse Polarity" fault. Additional Indicators:
	Clamp misconnection. The clamps are not connected, the clamps are shorted, or the battery voltage is too low to read (<0.5V). Additional Indicators:
ITEM# 875 Frontline™ 75	
Input Power	120V AC
Processes	Smart Charge Force Charge 300A Engine Start Alternator Test Adjustable Voltage Power Supply
Charging Mode <i>Battery chemistry charged by each mode.</i>	STD Wet Cell, Enhanced Flooded, Maintenance Free, Deep Cycle, Calcium
	AGM Absorbed Glass Mat (VRLA)
	GEL Gel Cell (VRLA)
	LFP LiFePO4
Battery Voltage	12V & 6V
Charging Rate	10A 40A 75A
Max Battery Capacity	1800Ah
Weight	11.47 lbs (5.2 kg)
Dimensions	9.38" x 13.04" x 8.11" (238.1mm x 331.1mm x 205.9mm)
Operating Temperature	-4° F - 113° F (-20° C - 45° C)

Forney® PRO

FRONTLINE™ 75

75A BENCH CHARGER

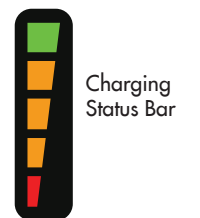
QUICK START GUIDE



Solid: Clamps are misconnected, disconnected, or battery's voltage is too high.

Flashing: Battery tested and determined bad.

Clamps are reversed.



REPAIRING

Charger blasts battery with high voltage to attempt to charge a heavily discharged battery.

CHARGING

Charger will analyze the state of the battery and will either adjust the voltage output to optimize the charging rate or desulfate an old battery, if needed.

MAINTAINING

Once the battery has become fully charged, the charger will continue to monitor the battery's voltage to keep it fully charged while preventing overcharging.



Forney Industries, Inc.
2057 Vermont Drive • Fort Collins, CO 80525
+1-800-521-6038 • www.forneyind.com

Smart Charge

1. Connect clamps to battery terminals



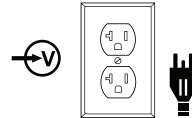
Black to the negative (NEG, N, or -) terminal



Red to the positive (POS, P, or +) terminal

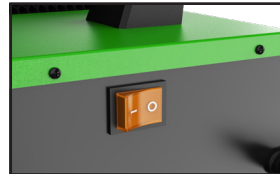
2. Connect to 120V input power

If using an extension cord, refer to the sizing chart in the safety information.



3. Turn Power Button to ON

Power Button is located on the back of the unit.



4. Select battery type and charging characteristics



TYPE

Select Battery Type: STD, AGM, GEL, or LFP



MODE

Select Charging Mode: 6V, 12V, or 300A Boost for engine starting



AMPS

Select Charging Rate: 10A, 40A, 75A

5. Press START. To stop charging, press button again



To Force Charge, press and hold Start Button for 5 seconds.

Force Charge mode is best used if automatic charging is unable to repair and charge a bad battery or if the battery voltage is less than 0.5V. Force Charge will attempt to manually charge the battery until it can retain a charge, then it will resume normal charging. If the battery will not hold a charge after 3 attempted charge cycles, the unit will stop charging and return to standby mode.

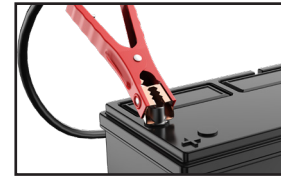
Alternator Test

Do not connect unit to input power for alternator testing.

1. Connect clamps to battery terminals



Black to the negative (NEG, N, or -) terminal



Red to the positive (POS, P, or +) terminal

2. Start vehicle

3. Press ALTERNATOR TEST Button



Pulsing light will stop on GREEN indicating a good alternator, or RED indicating a bad alternator.

300A Boost Mode

1. Connect clamps to battery terminals



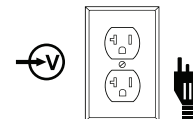
Black to the negative (NEG, N, or -) terminal



Red to the positive (POS, P, or +) terminal

2. Connect to 120V input power

If using an extension cord, refer to the sizing chart in the safety information.



3. Turn Power Button to ON

Power Button is located on the back of the unit.



4. Select 300A Boost Mode



Select Charging mode: 300A Boost for engine starting.

5. Press START/STOP Button



6. Start vehicle. Once vehicle has started, press START/STOP Button to end Boost Mode

Leave unit connected and try starting your vehicle. The unit will automatically send boost current to your battery when the ignition key is turned.

If vehicle does not turn over on the first boost, a 60 second timer will count down until your unit is ready to try again. Then repeat steps 4-5.

Additionally, attempt to use the charging function for 5-10 minutes before attempting to using the Boost Mode again, this will increase the chances of the vehicle starting.

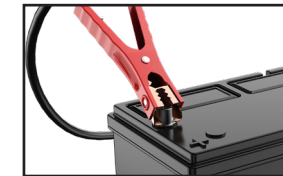
Power Supply

This mode will supply power to your battery so you can run the electronic systems without running the engine/alternator.

1. Connect clamps to battery terminals



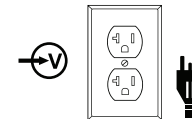
Black to the negative (NEG, N, or -) terminal



Red to the positive (POS, P, or +) terminal

2. Connect to 120V input power

If using an extension cord, refer to the sizing chart in the safety information.



3. Press POWER SUPPLY Button

This unit is **NOT** intended to supply power to a low-voltage system without a battery present.



4. Adjust Power Supply voltage output

Use the PLUS and MINUS Button to adjust. Voltage output will show on the digital screen.

Output is adjustable from 13.1 – 14.9V to meet the needs of a variety of vehicles.

