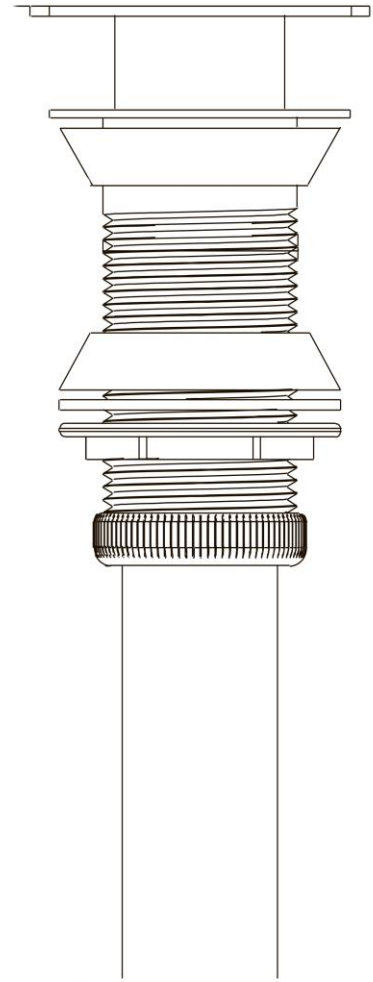




BATHROOM POP-UP DRAINS

DAX-82012

- DAX-82012-CR (Chrome)
- DAX-82012-BN (Brushed nickel)
- DAX-82012-BM (Black Matte)
- DAX-82012-GM (Gunmetal)
- DAX-82012-BG (Brushed gold)



Questions, problems, missing parts? Before returning to your retailer, call our customer service department at 1-888-685-8236 or email us at cs@daxib.com.

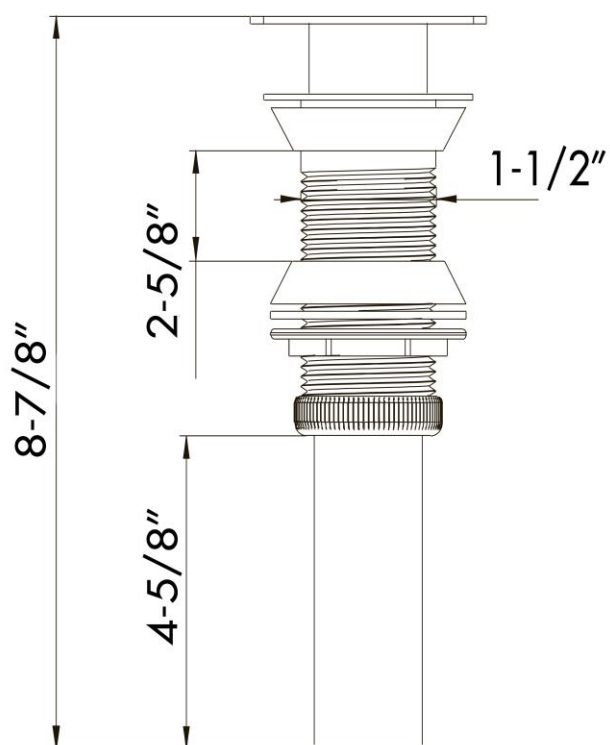
You can also visit our website at www.daxib.com.



DAX-82012

FEATURES:

- Brass Body
- Mounting parts included
- Without Overflow



DAX-82012-BN



DAX-82012-CR

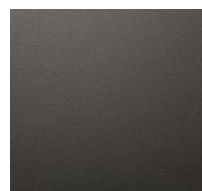
Chrome



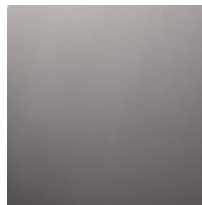
Brush Nickel



Matte Black



Gun Metal



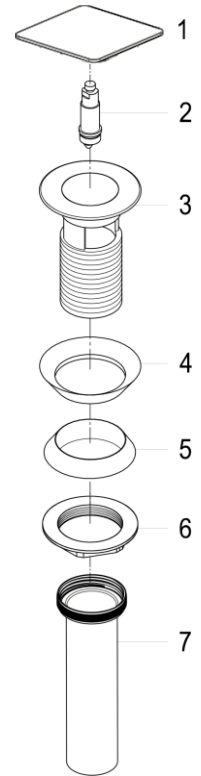
Brushed Gold



INSTALLATION INSTRUCTIONS

Step 1

1. Remove Drain body (3) from Tailpiece (7) then remove rubber washer(4), rubber gasket(5), and metal nut(6) from drain body.
2. Insert drain body(3) and rubber washer(4) through the drain opening at the top of the sink.
3. Insert rubber gasket(5) onto the drain body and then tighten the metal nut(6) on the drain body to push rubber gasket(5) up against the bottom of drain opening. Tighten the nut with slip-joint pliers.
4. Apply Teflon tape on both tailpiece thread connection and drain body.
5. Turns handles on faucet to the full-on position and inspect to ensure that there is no leaking underneath lavatory.



CARE AND MAINTENANCE

To keep the product clean & shining, follow the steps below:

1. Rinse with clean water & dry with a soft cloth
2. Do not clean with soaps, acid, polish, abrasives, or harsh cleaners
3. Do not use cloth with a coarse surface

WARRANTY

DAX products are manufactured and tested to the highest quality standards by DAX International Brokers Inc. ("DAX").

DAX extends this warranty to the original purchaser for personal household use. The warranty is non-transferable.

DAX warrants the structure and finish of the product to be free from defects in material and workmanship under normal usage for a period of one (1) year. The warranty commences from the date of purchase by the owner or trade professional, from an authorized DAX dealer.

Any product reported to the authorized dealer or to DAX as being defective within the warranty period will be repaired or replaced with a product of equal value at the option of DAX. This warranty extends to the original owner or end-user, and is not transferable to a subsequent owner.

RESTRICTIONS

This warranty does not cover discontinued or display products, whether such items are purchased at discount outlets, unauthorized dealers, and/or sold on clearance.

This warranty does not cover instances of negligence, misuse, abuse, improper installation, carelessness, accident, hard water or mineral deposits, exposure to corrosive materials, misapplication, damages caused by improper maintenance, alteration of the product, or failure to follow care or installation instructions enclosed with your product. Avoid using abrasive cleaners such as powders, bleach, ammonia, alcohol, or chlorine. Avoid using abrasive pads, steel wool, or wire brushes, as these will damage and wear down the finish.

This warranty does not apply to Products that have not been installed or operated in accordance with instructions supplied by DAX and all applicable rules, regulations, and legislation pertaining to such installations.

This warranty does not apply unless the DAX product is installed by a fully insured and licensed trade professional. DAX insists that such professionals have experience in the installation of bathroom and kitchen manufactured goods.

This warranty does not cover labor charges or costs of removal and reinstallation of said product. This warranty does not allow recovery of incidental or consequential damages such as loss of use, delay, property damage, or other consequential damages, and DAX accepts no liability for such damages.

This warranty does not cover Marine or Outdoor Installation. Except as otherwise provided above, DAX makes no warranties, expressed or implied, including warranties of merchantability and fitness for a particular purpose, or compliance with any code.

Shipping and Handling charges will be covered for the first (1) year of the warranted replacement part or product. International shipping fees are not included.