

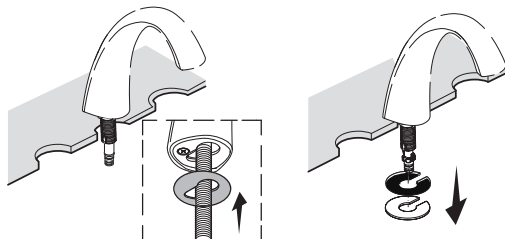
PARLOS®

Installation Guide

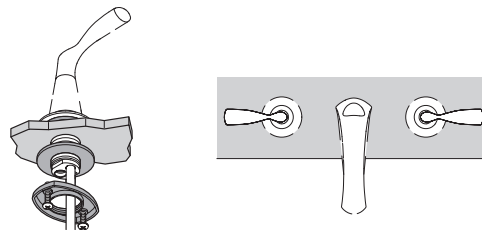
If you have any question or need help,
please visit **PARLOS®** website
<http://www.parlos.com>



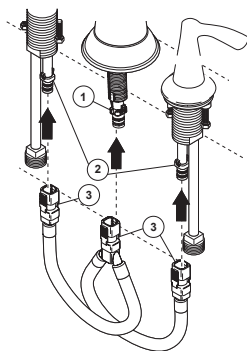
1. Place spout with gasket through mounting hole in sink. Secure spout with bracket and nut.
Note: If sink is uneven, use silicone under the gasket.



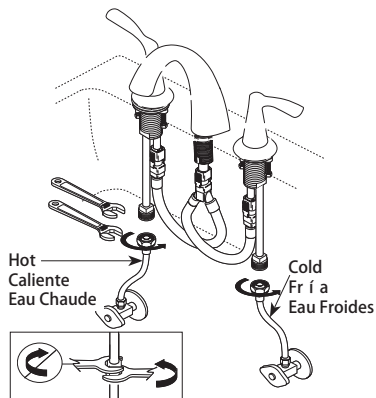
2. Loosely attach each handle with a washer and a threaded ring.
Ensure the handles are in the OFF position Align the handles as shown.



3. Align spout tube ① outlet tubes ② on quick connect hose ③.
Push quick connect hose ③ firmly upward and snap onto tubes ① ②.
Pull down moderately to ensure each connection has been made.



4. Connect to water supplies.



5. Turn on the water supplies.
Check all connections for leaks.

