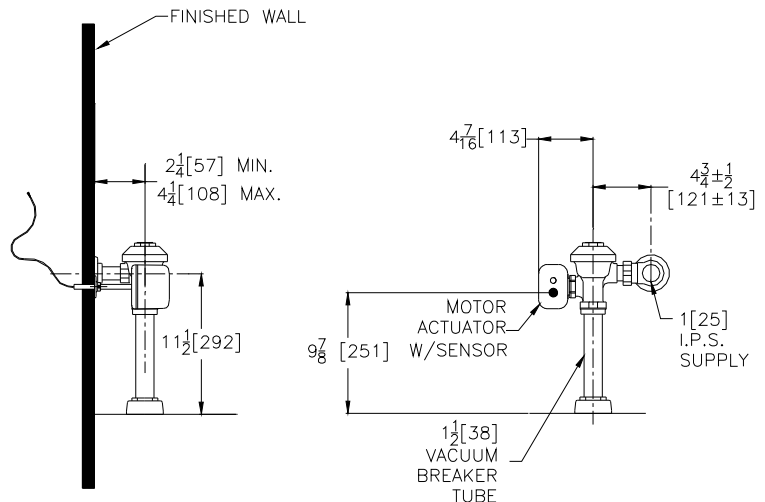




AquaSense® AV Model

TAG _____

Exposed ZEMS6000AV-IS Model Hardwired Automatic Sensor Flush Valve For Water Closets



Flow Options

- | | |
|-------------------------------|--------------------------|
| <input type="checkbox"/> -WS1 | 1.6 Gal. Low Consumption |
| <input type="checkbox"/> -FF | 4.5 Gal. Full Flush |
| <input type="checkbox"/> - | 3.5 Gallons Per Flush |

Suffix Options (Check/Specify Appropriate Options)

- | | |
|---------------------------------|--------------------------|
| <input type="checkbox"/> -FM12 | Floor Mount 12" Rough In |
| <input type="checkbox"/> -YJ | Split Ring Pipe Support |
| <input type="checkbox"/> -YK | Solid Ring Pipe Support |
| <input type="checkbox"/> -YO | Bumper on Angle Stop |
| <input type="checkbox"/> -_____ | Other |

Accessories (Order separate as specified)

- | | |
|---------------------|--|
| P6000-MJ | Mini Junction Box |
| P6000-HW6 | Hardwire Power Converter
(8 valves maximum) |
| P6900-ACA-BA | Regulated AC Supply
(6 valves maximum) |

NOTE: MUST USE EITHER ZURN P6000-HW6 HARDWIRE POWER CONVERTER OR P6900-ACA-BA REGULATED PLUG-IN POWER CONVERTER TO ENSURE PROPER OPERATION. USING A POWER CONVERTER OTHER THAN ZURN MAY RESULT IN OPERATION MALFUNCTION OR UNIT FAILURE.

ENGINEERING SPECIFICATION: ZURN ZEMS6000AV-IS AquaSense® 'AV' Exposed Hardwired Automatic Sensor Flush Valve For Water Closets- Exposed, quiet diaphragm-type, chrome plated, flushometer valve with a polished exterior. Complete with Zurn's AquaVantage® TPE, chloramine resistant, dual seal diaphragm with a clog resistant, triple filtered by-pass. The valve incorporates a motorized actuator, an integral infrared convergence-type proximity sensor and a manual push-button override into an all-metal, polished chrome plated housing. Sensor range automatically adjusts to its environment at power up and is powered by a 7.6 VDC power converter. Each power converter can accommodate up to eight flush valves. The valve is complete with high back pressure vacuum breaker, one piece hex coupling nut, adjustable tail-piece, spud coupling and flange for top spud connection. Control stop has internal siphon-guard protection, vandal resistant stop cap, sweat solder kit, and a cast wall flange with set screw. Internal seals are made of chloramine resistant materials.

This space is for Architectural/Engineering Approval

The information contained in this document is subject to change without notice.
Please contact Zurn for most up to date information.

ZURN INDUSTRIES, LLC. ♦ COMMERCIAL BRASS OPERATION ♦ 5900 ELWIN BUCHANAN DRIVE ♦ SANFORD NC 27330

Phone: 1-800-997-3876 ♦ Fax: 919-775-3541 ♦ World Wide Web: www.zurn.com

In Canada: ZURN INDUSTRIES LIMITED ♦ 3544 Nashua Drive ♦ Mississauga, Ontario L4V1L2 ♦ Phone: 905-405-8272 Fax: 905-405-1292

AquaVantage® is a registered trademark of Zurn Industries, LLC.
AquaSense® is a registered trademark of Zurn Industries, LLC.

Rev. G
Dwg. No. 66822

Date: 7/1/2014
Product No. ZEMS6000AV-IS