



Let's Yeego

Who are we?

Yeego, the perfect fusion of fashion and innovation. We are a factory seller specializing in wine cooler and beverage refrigerator.

We pursue fashionable design and innovative technology to create a space full of personality and modernity for you.

Whether you are a connoisseur who loves wine tasting, or a host looking to add unique charm to family gatherings, Yeego products can meet your needs.

Choose Yeego, let us create a fashionable, innovative and wonderful life experience together.



<https://yeegolife.com/>



<https://www.facebook.com/yeegolife.official>



<https://www.instagram.com/yeegolife.official>

Yeego

Product



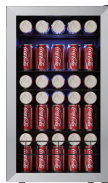
YEG-BSJC46



YEG-BSJC62



YEG-BSJC88



YEG-BSJC95



YEG-BSJC130

Significant Feature

Modern Electric Beverage Fridge:

The glass front door with a stainless steel frame for you to view your wine, beer or soda at a glance. Its blue LED interior light illuminates for easy, nighttime selection of your favorite chilled drink, decorates your kitchen, living room, office or bar area.

Small Size , Large Storage Capacity:

Enjoy this beverage refrigerator with plenty of space to store all your favorite drinks with movable shelves.

Direct Cooling System Beverage Refrigerator:

The cooler maintains temperatures between 38°F and 68°F, keeping both red and white wines at the suitably serving temperature, and you can customize what you need.

Double Tempered Glass Door Beer Fridge:

Double-layer tempered glass door improves temperature stability, reduces condensation, and keeps your drinks perfect with low electricity consumption.



YEG-BSJC46

VOLTAGE:	110-120V
CURRENT:	1.3A
FREQUENCY:	60HZ
POWER CONSUMPTION:	85W
BOTTLE CAPACITY:	65 Cans
STORAGE CAPACITY:	1.62 cu. ft.
TEMPERATURE RANGE:	38°F - 68°F
REFRIGERANT:	R600a (0.59 oz)



YEG-BSJC62

VOLTAGE:	110-120V
CURRENT:	1.3A
FREQUENCY:	60HZ
POWER CONSUMPTION:	85W
BOTTLE CAPACITY:	80 Cans
STORAGE CAPACITY:	2.18 cu. ft.
TEMPERATURE RANGE:	38°F - 68°F
REFRIGERANT:	R600a (1.058 oz)



YEG-BSJC88

VOLTAGE:	110-120V
CURRENT:	1.3A
FREQUENCY:	60HZ
POWER CONSUMPTION:	85W
BOTTLE CAPACITY:	121 Cans
STORAGE CAPACITY:	3.1 cu. ft.
TEMPERATURE RANGE:	38°F - 68°F
REFRIGERANT:	R600a (1.058 oz)



YEG-BSJC95

VOLTAGE:	110-120V
CURRENT:	1.3A
FREQUENCY:	60HZ
POWER CONSUMPTION:	85W
BOTTLE CAPACITY:	140 Cans
STORAGE CAPACITY:	3.35 cu. ft.
TEMPERATURE RANGE:	38°F - 68°F
REFRIGERANT:	R600a (1.058 oz)



YEG-BSJC130

VOLTAGE:	110-120V
CURRENT:	1.3A
FREQUENCY:	60HZ
POWER CONSUMPTION:	85W
BOTTLE CAPACITY:	180 Cans
STORAGE CAPACITY:	4.59 cu. ft.
TEMPERATURE RANGE:	38°F - 68°F
REFRIGERANT:	R600a (1.058 oz)

TABLE OF CONTENTS

SAFETY INFORMATION & WARNINGS	01
PARTS LIST	02
ASSEMBLY & INSTALLATION	03
PRODUCT SIZE	04
OPERATING INSTRUCTIONS	05
INSTALLATION INSTRUCTIONS	07
CLEANING & MAINTENANCE	08
TROUBLESHOOTING GUIDE	09
LIMITED MANUFACTURER'S WARRANTY	10
CUSTOMER SERVICE	11

Yeego



Yeego



yeegolife.com

SAFETY INFORMATION & WARNINGS



When using any electrical appliance, basic safety precautions must be followed in order to reduce the risk of fire, electrical shock and/or injury to persons or property. Be sure to read all instructions before using this appliance and observe the following safety tips:

Attention: Child Entrapment Risk!

To prevent the risk of child entrapment, do not allow children to operate, play with, or crawl inside the unit. If the unit will not be used for an extended period of time, remove the door and leave the shelves in place so that children cannot crawl inside. Also remove the door when disposing of the unit.



Shock Hazard –Electrical Grounding Required

- Never attempt to repair or perform maintenance on the unit until the electricity has been disconnected.
- Never remove the round grounding prong from the plug and never use a two-prong grounding adaptor.
- Altering or cutting of power cord, removal of power cord, removal of power plug, or direct wiring can cause serious injury, fire, loss of property and/or life, and will void the warranty.
- Never use an extension cord to connect power to the unit.
- Avoid operating this beverage cooler in excessively moist or humid environment.



Important Precautions:

- Do not lift unit by door handle.
- Never install or operate the unit behind closed doors.
- Failure to clean the condenser every six months can cause the unit to malfunction.
- Allow unit temperature to stabilize for 24 hours before use.
- Do not block any internal fans.
- Keep the beverage cooler away from hazardous materials or combustible/flammable substances.
- Use only genuine supplier's replacement parts. Imitation parts can damage the unit, affect its operation or performance, and may void the warranty.

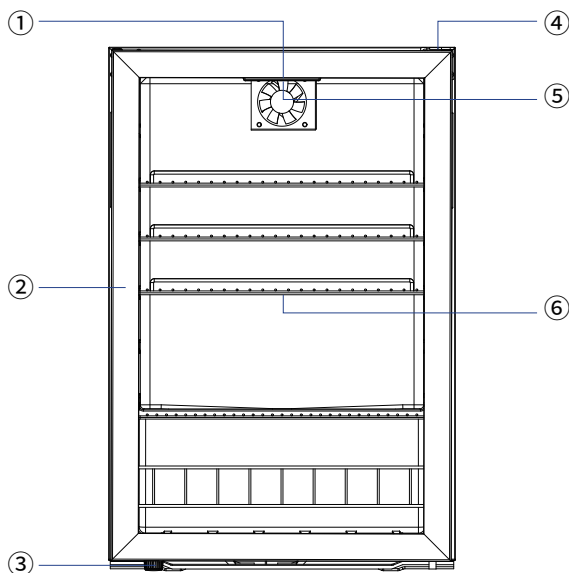
PARTS LIST

When you receive your unit, carefully remove the exterior and interior packaging. It is recommended that you retain the packaging for future use.

Check to make sure the following parts are included:

- Removable Shelves
- Left Door Hinge & Screws
- User Manual

PARTS DIAGRAM



1. Mechanical temperature control panel

2. Stainless steel door

3. Beverage cooler foot

4. Door hinge

5. Interior LED light

6. Shelf

ASSEMBLY & INSTALLATION



Before connecting the appliance to a power source, let it stand upright for approximately 2 hours. This will reduce the possibility of a malfunction in the cooling system from handling during transportation.

This beverage cooler is a freestanding unit and should not be built in to surrounding cabinetry. Allow for proper air clearance around the cooler. The recommended clearances are as follows:

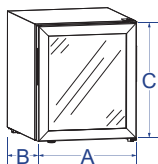
Sides: $\frac{3}{4}$ " (19 mm) | Top: 4" (100 mm) | Back: 2" (50 mm)

Before operating your beverage cooler for the first time, follow these steps:

1. Clean the interior surface of the unit with lukewarm water and a soft cloth.
2. Place the cooler on a level surface that will be strong enough to support the unit when it is fully loaded. To level your cooler, adjust the front feet located at the bottom of the unit.
3. Install the cooler away from direct sunlight and heat sources such as stoves, heaters, or radiators. Direct sunlight may affect the unit's acrylic coating, and nearby heat sources can increase electrical consumption. Extreme cold or hot ambient temperatures may also prevent proper performance.
4. Once the cooler is plugged in, let the beverage cooler run for at least 30 minutes. Do not change the temperature or adjust any settings at this time.

PRODUCT SIZE

YEG-BSJC46

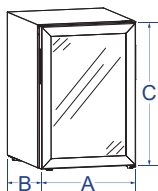


Overall Width (in.) A 16.93"

Overall Depth (in.) B 18.50"

Overall Height (in.) C 19.69"

YEG-BSJC62

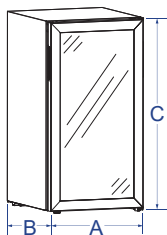


Overall Width (in.) A 16.93"

Overall Depth (in.) B 18.50"

Overall Height (in.) C 24.80"

YEG-BSJC88

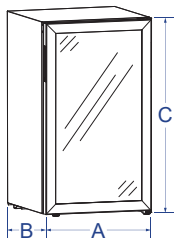


Overall Width (in.) A 16.93"

Overall Depth (in.) B 18.50"

Overall Height (in.) C 32.13"

YEG-BSJC95

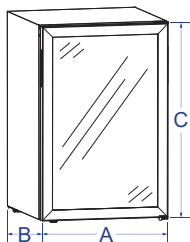


Overall Width (in.) A 18.90"

Overall Depth (in.) B 18.11"

Overall Height (in.) C 32.48"

YEG-BSJC130



Overall Width (in.) A 21.26"

Overall Depth (in.) B 21.06"

Overall Height (in.) C 32.09"

OPERATING INSTRUCTIONS

Control Panel



We can make temperature setting from the left to the right for 68°F, 59°F, 52°F, 45°F, 38°F. At the same time, we adjust the procedure for the light on/off of temperature setting button as following:



When touch the first snowflake at the left, the first snowflake light up. It means had set the highest temperature 68°F ($\pm 4^\circ\text{F}$).



When touch the second snowflake at the left, the first and the second snowflake light up. It means had set the target temperature 59°F ($\pm 4^\circ\text{F}$).



When touch the third snowflake, the following three snowflakes light up. It means had set the target temperature 52°F ($\pm 4^\circ\text{F}$).



When touch the fourth snowflake, the following four snowflakes light up. It means had set the target temperature 45°F ($\pm 4^\circ\text{F}$).



When touch the fifth snowflake, all five snowflakes light up. It means had set the coldest temperature 38°F ($\pm 4^\circ\text{F}$).

* NOTE

If the unit is unplugged, if the power is lost, or turned off, you must wait 3 to 5 minutes before restarting the unit. If you attempt to restart before this time delay, the wine cellar will not start.

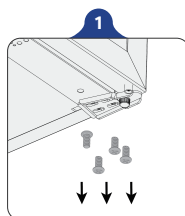
When you use the beverage refrigerator for the first time or restart the beverage refrigerator after having been shut off for a long time, there could be a few degrees variance between the temperature you select and the one indicated on the LED readout. This is normal and it is due to the length of the activation time. Once the wine cellar is running for a few hours everything will be back to normal.

Optimizing Performance

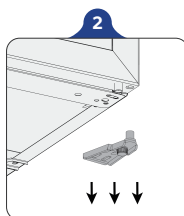
- To ensure maximum performance and efficiency, be sure to place your beverage cooler in an area where there is proper air circulation. (See installation instructions above for proper clearances).
- For proper internal air circulation, do not overfill your beverage cooler. When storing beverages, keep them away from the rear wall. To allow free circulation of cold air, don't pack beverages too tightly on the shelves.
- Do not place the unit in direct sunlight.
- Do not place heated beverages or food in your cooler.
- Do not store perishable food in your beverage cooler. The unit's interior temperature may not be low enough to prevent spoilage.
- Do not place heavy objects on top of the beverage cooler.

INSTALLATION INSTRUCTIONS

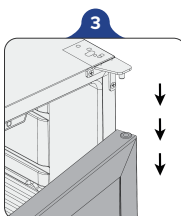
Installing Reversible Door



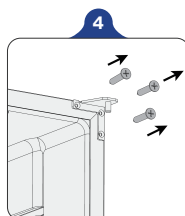
Twist down the screws of the lower door hinge



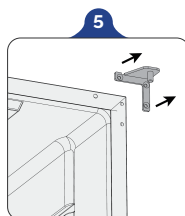
Remove the lower door hinge



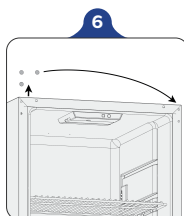
Remove the door



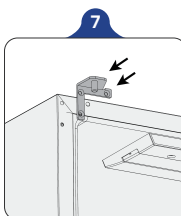
Twist down the screws of the upper door hinge



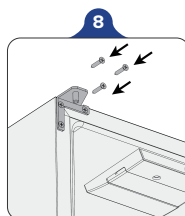
Remove the upper door hinge



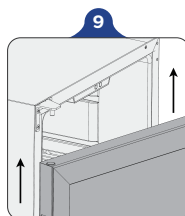
Remove the hole plugs from the left holes to the right holes



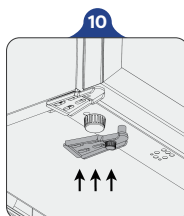
Install the upper left door hinge



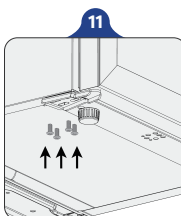
Tighten the screws of the upper left door hinge



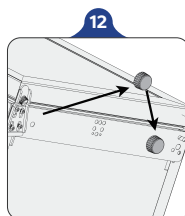
Install the door upwards



Install the lower left door hinge



Tighten the screws of the lower door hinge



Remove the cabinet foot from the left and then install the foot on the right

CLEANING & MAINTENANCE

Cleaning Your Cooler

How to clean your cooler:

- Unplug the cooler and remove anything inside.
- Wash the inside of the unit with a solution made of warm water and neutral detergent. Do not use abrasive cleaners.
- Use mild, soapy water to clean the unit's door seal.
- To ensure efficient operation, also thoroughly clean the back and bottom of the beverage cooler.
- To clean the outside of the unit, use a mild detergent and warm water.

Moving Your Cooler

To move your cooler:

- Remove anything stored inside.
- Securely tape down all loose parts located inside the unit.
- Turn the leveling feet up to the base in order to avoid damage.
- Tape the door shut.
- Be sure the cooler stays in an upright position during transportation.

TROUBLESHOOTING GUIDE

Problem	Possible Causes	Solution
The beverage cooler does not cool.	The unit may be plugged in using a different voltage.	Check if using the wrong voltage.
	The circuit breaker may be tripped or there is a blown fuse.	Reset the circuit breaker or check for a broken fuse.
The beverage cooler is not cold enough.	The external environment may require a higher setting.	Lower the temperature of the cooler.
	The cooler may be placed too close to a heat source.	Keep the cooler away from direct sunlight or other heat sources.
	There is insufficient ventilation.	Place the beverage cooler in an area with proper ventilation and clearances.
	The door is not completely closed or the door seal is not working properly.	Close the door tightly. Do not open the door frequently and do not keep the door open for extended periods of time. Replace the seal on the door if necessary.
The beverage cooler seems to make too much noise.	The unit is not leveled.	Adjust the unit's feet and ensure the product is level.
	There is insufficient ventilation. The unit is too close to a wall or another surface.	Allow sufficient clearance around the unit.
An interior red light is flashing.	The set temperature is too low.	Adjust the set temperature so that it is higher than the beverage cooler's interior temperature.
Frost is building up in the unit.	There is excess humidity or the interior temperature is too low.	Turn off the beverage cooler, unplug it, and remove the frost buildup manually. Reconnect the power once the ice has thawed.

LIMITED MANUFACTURER'S WARRANTY

1 YEAR WARRANTY PARTS

For a year (12 months) from the purchase by the original owner, we would provide accessories to replace any part of the unit which proves to be defective in material or workmanship, with installation video or online guide. You could also contact us by email to get a solution.

During this period we will provide all parts necessary to correct such defects free of charge, so long as the unit has been installed and operated in accordance with the written instructions in this manual.

3 YEAR WARRANTY COMPRESSOR

For the 2nd through the 3rd year from date of original purchase, we will provide a replacement compressor free of charge due to a failure.

You are responsible for the service labour and freight charges. Cost to move the wine cellar to the servicers' shop and back to the user's home, as may be required, are the user's responsibility.

WHAT IS NOT COVERED

Damage due to such things as accident, misuse, abuse, mishandling, neglect, acts of God, fires, earthquakes, floods, high winds, government, war, riot or labour troubles, strikes, lockouts, delay of carrier, or any cause beyond the control of the Seller whether similar or dissimilar to the foregoing.

Content losses due to spoilage.

Incidental or consequential damages.

Parts and labour costs for the following will not be considered as warranty:

- ° Door springs, and/or frames.
- ° Inner door panels, door rails and/or door supports.
- ° Light bulbs and/or plastic housing.
- ° Plastic cabinet liners.

Punctured evaporator that voids the warranty on the complete sealed system.

Repairs performed by unauthorized servicers.

Damage caused by external influences.

Excess wear and tear by the user.

Service calls that do not involve defects in material or workmanship such as customer education, door reversal, or proper installation.

Service calls that are related to external problems, such as abuse, misuse, inadequate electrical power, accidents, fire, floods, or acts of God.

Replacement of house fuses or resetting circuit breakers.

Failure of the product if it is used for other than its intended purpose.

This warranty does not apply outside Canada or the Continental USA.

Purchaser understands and acknowledges that the goods purchased are beverage refrigerator, which store wines. Purchaser assumes all risk of using this unit, including risk of spoilage, humidity variations, temperature variations, leaks, fire, water damage, mold, mildew, dryness, and similar perils that might occur.

CUSTOMER SERVICE

Read This Guide Carefully.

It is intended to help you operate and maintain your new wine cellar properly. Keep it handy to answer your questions.

Keep proof of original purchase date (such as your sales slip) with this guide to establish the warranty period.

Save time and money. Before you call for service, check the Troubleshooting Guide. It lists causes of minor operating problems that you can correct by yourself.

Purchase Date : _____

Model Number : _____

Serial Number : _____

Contact Us

We're proud of our service and want you to be pleased. If for some reason you are not happy with the service you receive, here are some steps to follow for further assistance.

First, contact the people who serviced your beverage refrigerator.

Explain why you are not pleased. In most cases, this will solve the problem.

Please feel free contact us by after-service email address (service@yeegolife.com)

Next, if you are still not pleased, fill in all the detailed information, including your telephone number and send it to us :

Address	
Phone	
Fax	
Email	
Online	



Let's Yeego
yeegolife.com

