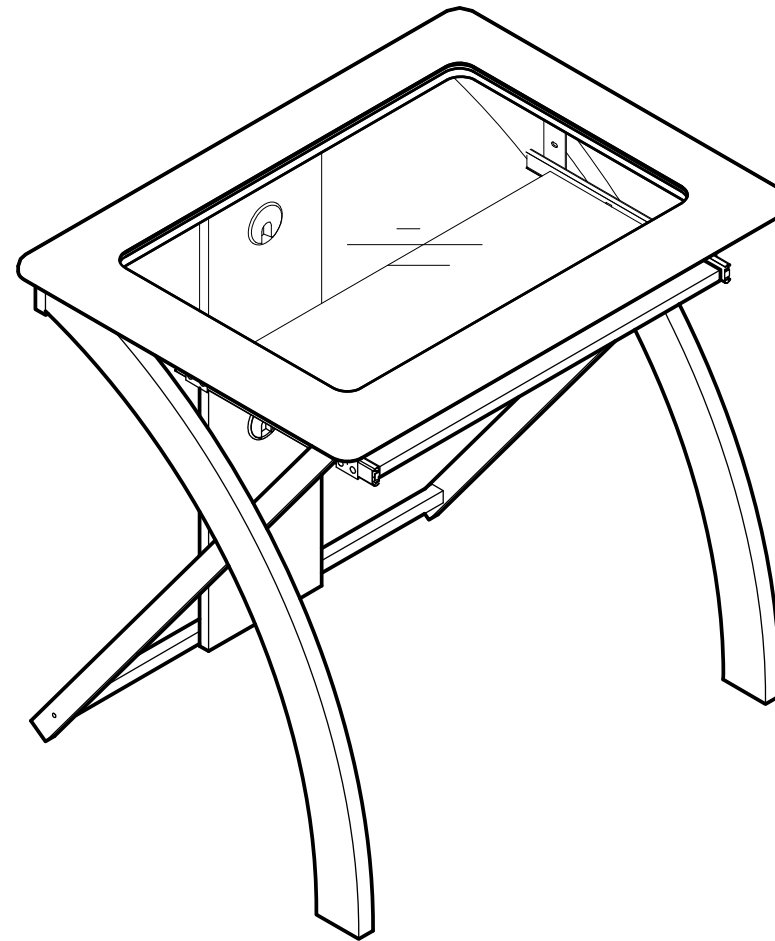




# XT59ES COMPUTER DESK OPERATING INSTRUCTIONS



## **WARNING**

1. Do not use this product unless all screws and bolts are securely tightened.
2. Check that all screws and bolts are tight every three months or as needed.
3. Dispose of packing material properly. Do not use plastic cover as head covering. It may cause suffocation.
4. Do not use this product as a stepladder.
5. Use this product for its intended purpose only.
6. **Intended for residential use only.**

## **LIMITED WARRANTY**

OSP Designs Warrants, to the original purchaser its products to be free from defects in material and workmanship for a period of 90 days. Defects and damage from misuse, abuse, negligence, alteration, accident, vandalism, rusting, acts of nature or any other event beyond the control of OSP Designs is not covered. The warranty does not cover cosmetic damage that may result from normal use. Liability for incidental or consequential damages is excluded. The user assumes all risk of injury resulting from use of this product. This warranty gives you specific legal rights, and you may also have other rights which vary from state to state.

To make a warranty claim, contact Customer Service, provide model number, sales receipt and description of the problem. It is the customer's responsibility to prepay freight on any components returned to the factory. OSP Designs will pay return freight on components covered under terms of warranty.

Our quality standards are among the highest in the industry. Sometimes, no matter how hard we try, there are times when hardware is missing. Our Parts Department will do everything possible to promptly remedy the problem. Contact us via email **parts@officestar.net**, by Fax 1-909-930-5629, or toll free parts number 1-800-950-7262, Monday through Friday 8:00 a.m. - 5:00 p.m. Pacific Time. OSP Designs P.O. Box 3520 Ontario, California 91761 USA



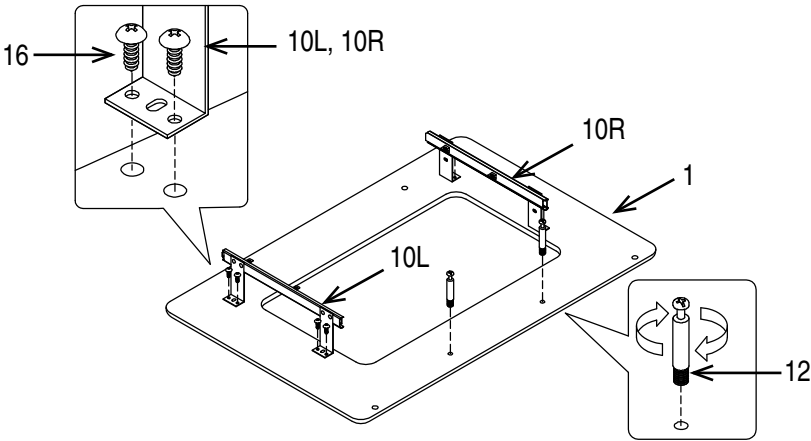


XT59ES  
COMPUTER DESK  
ASSEMBLY INSTRUCTIONS

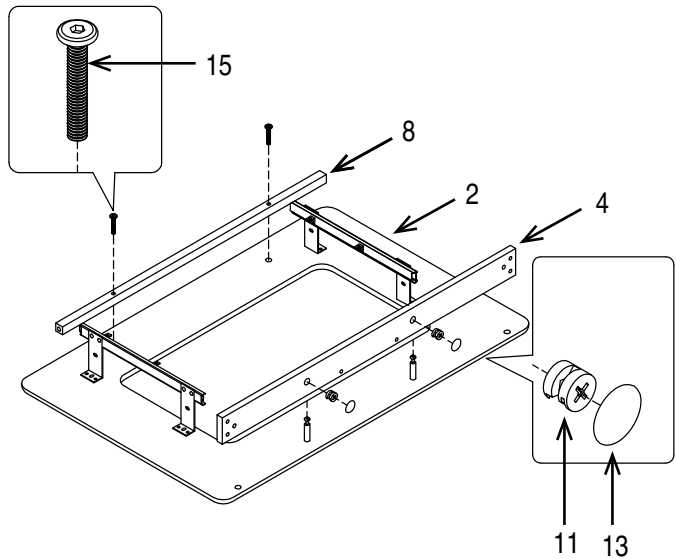
IMPORTANT NOTE:

- 1. Use hand tools only for assembly as power tools may cause damage
- 2. Carefully remove any staples used for packaging.
- 3. Phillips Screwdriver also needed for assembly (not provided)

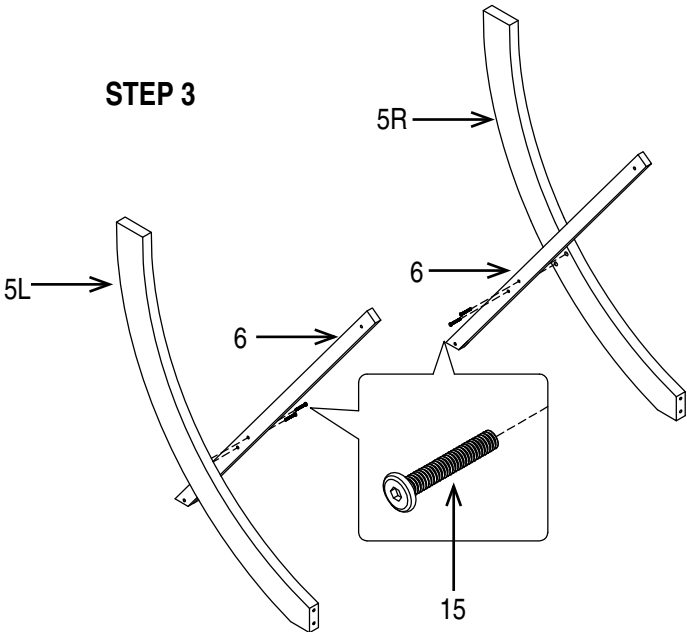
STEP 1



STEP 2



STEP 3

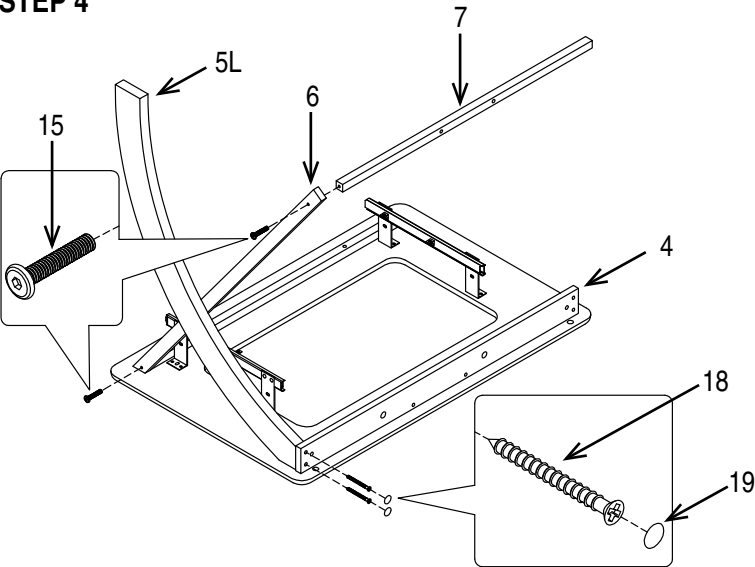


PART	QTY
1. Desk Top	1
2. Key Board	1
3. Back Panel	1
4. Back Wooden Rail	1
5. Wooden Leg (5L & 5R)	2
6. Metal Leg	2
7. Bottom Metal Rail	1
8. Top Metal Rail	1
9. Glass Top	1
10. Keyboard Glides (10L & 10R)	2
11. Cam Lock	2
12. Cam Lock Stud	2
13. Cam Cap	2
14. Short Allen Screw	4
15. Long Allen Screw	12
16. Small Phillips Screw	12
17. Medium Phillips Screw	2
18. Large Phillips Screw	4
19. Sticker	6
20. Metal L-Bracket	2
21. Allen Wrench (not shown)	1

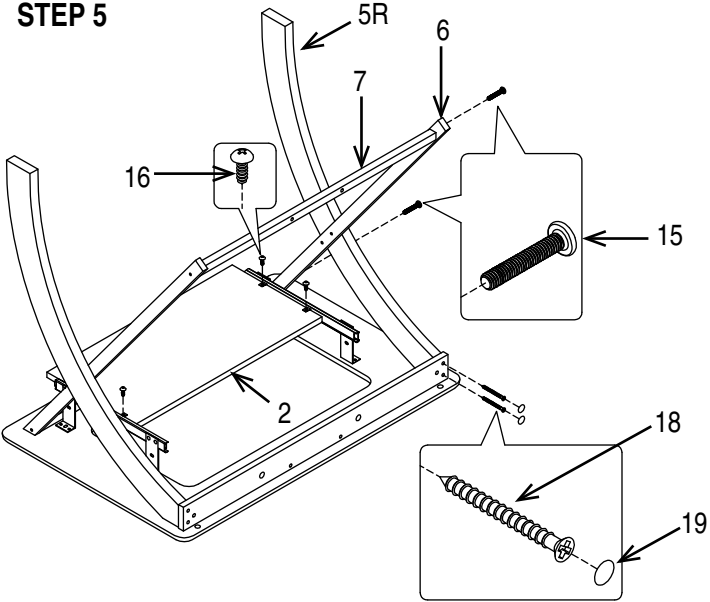


XT59ES  
COMPUTER DESK  
ASSEMBLY INSTRUCTIONS

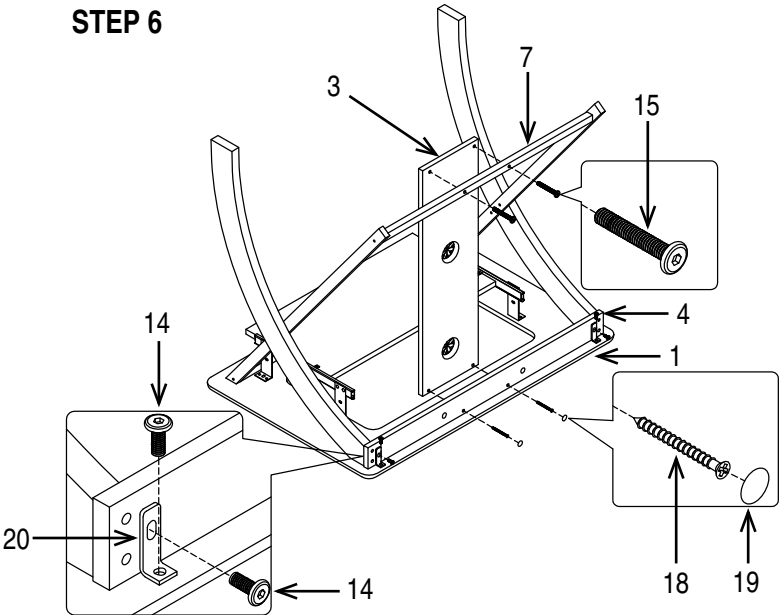
STEP 4



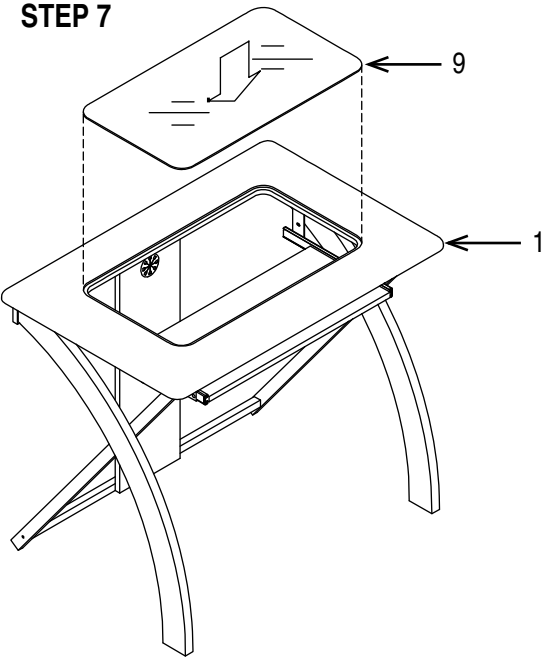
STEP 5



STEP 6



STEP 7



Remove all parts from carton, separate by part numbers indicated on parts list, and verify part quantities.

**STEP 1** Attach Keyboard Glides (10L & 10R) to Desk Top (1) using four Small Phillips Screws (16) for each Keyboard Glide (10).

**FULLY TIGHTEN ALL SMALL PHILLIPS SCREWS (16) USING PHILLIPS SCREWDRIVER (not provided).**

Insert two Cam Lock Studs (12) into Desk Top (1).

**STEP 2** Attach Top Metal Rail (8) to Desk Top (1) using two Long Allen Screws (15). **FULLY TIGHTEN LONG ALLEN SCREWS (15) USING ALLEN WRENCH (21).** Attach Back Wooden Rail (4) to Desk Top (1) and secure using two Cam Locks (11). **FULLY TIGHTEN CAM LOCKS (11) USING PHILLIPS SCREWDRIVER (not provided).** Cover cam lock holes using two Cam Caps (13).

**STEP 3** Attach Wooden Legs (5L & 5R) to Metal Legs (6) using two Long Allen Screws (15) for each Wooden Leg (5). **FULLY TIGHTEN ALL LONG ALLEN SCREWS (15) USING ALLEN WRENCH (21).**

**STEP 4** Secure Wooden Leg (5L) to Back Wooden Rail (4) using two Large Phillips Screws (18), secure Metal Leg (6) to desk top assembly using one Long Allen Screw (15), secure Bottom Metal Rail (7) to Metal Leg (6) using one Long Allen Screw (15). **FULLY TIGHTEN ALL SCREWS.** Cover holes in Back Wooden Rail (4) using two Stickers (19).

**STEP 5** Secure Wooden Leg (5R) to Back Wooden Rail (4) using two Large Phillips Screws (18), secure Metal Leg (6) to desk top assembly using one Long Allen Screw (15), secure Bottom Metal Rail (7) to Metal Leg (6) using one Long Allen Screw (15). **FULLY TIGHTEN ALL SCREWS.** Cover holes in Back Wooden Rail (4) using two Stickers (19).

**STEP 6** Attach Back Panel (3) to Bottom Metal Rail (7) using two Long Allen Screws (15), secure Back Panel (3) to Back Wooden Rail (4) using two Large Phillips Screws (19). **FULLY TIGHTEN ALL SCREWS.** Cover holes in Back Wooden Rail (4) using two Stickers (19). Secure two Metal L-Brackets (20) to each end of Back Wooden Rail (4) and Desk Top (1) using two Short Allen Screws (14). **FULLY TIGHTEN ALL SHORT ALLEN SCREWS (14).**

**STEP 7** Carefully turn desk to upright position. Carefully place Glass Top (9) onto Desk Top (1).

**ATTENTION: MAKE SURE ALL SCREWS AND CAM LOCKS (11), CAM LOCK STUDS (12) AND ALL SCREWS ARE FULLY TIGHTENED BEFORE USING DESK.**