

NOTICE

*Please make sure that you have all parts indicated and they are in good condition before you begin assembly of this item. Refer to part list and hardware list below for guidance.

*This item should be assembled on a soft surface to prevent scratching the finish during assembly.

*This item may require periodic tightening.

*If you are having difficulty, our friendly Customer Care team is always here to help. Please email customersupport@safavieh.com

PREPARATION

*Before beginning assembly of product, make sure all parts are present. Compare parts with part contents list and hardware contents list.

*If any part is missing or damaged, do not attempt to assemble the product.

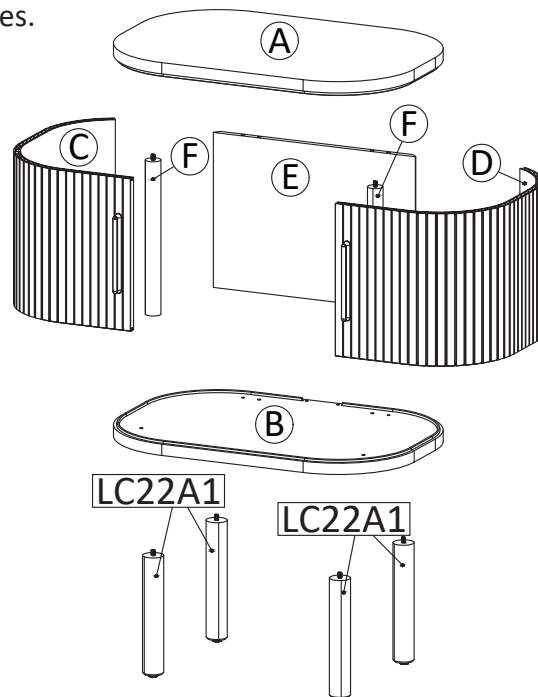
*Estimated Assembly Time: 45 minutes.

*Tools Required for Assembly (included): Allen Key

CARE AND MAINTENANCE

Always use felt pads under all articles to prevent discoloration or softening of the lacquer. Plastic and rubber bases on items can discolor wood. Wipe up spills immediately and avoid common hazards such as hot dishes, harsh solvents and abrasives. Cleaning should be done with a soft lint free cotton cloth dampened with water or furniture polish. On highly used surfaces we recommend applying a quality paste wax which should be used on a regular basis to provide additional protection from scratches and spills. How often you apply the wax depends on how much wear the furniture receives.

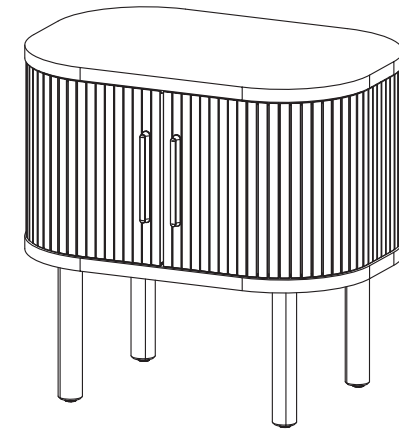
Part List



 **SAFAVIEH**
FURNITURE

Model# NST9610

Product Dimensions: 23"Wx15"Dx22"H



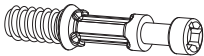


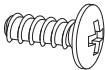

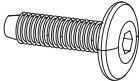




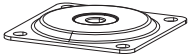
WARNING :

WEIGHT CAPACITY: 33 LBS.

Warning : Do not stand on night stand.

Warning : Do not over torque bolts.

Hardware List

<div>HW1x4</div> <div></div> <div>Ø 6 x 35 mm</div>	<div>HW2x4</div> <div></div> <div>Ø 12 mm</div>	<div>HW3x4</div> <div></div> <div>Ø 6 x 30 mm</div>	<div>HW4x24</div> <div></div> <div>M 4.5 x 12.5 mm</div>	<div>HW5x4</div> <div></div> <div>M 4 x 16 mm</div>
<div>HW6x2</div> <div></div> <div>M 6 x 30 mm</div>	<div>HW7x1</div> <div></div> <div></div>	<div>HW8x2</div> <div></div> <div></div>	<div>HW9x2</div> <div></div> <div></div>	<div>HW PM3x2</div> <div></div> <div></div>
<div>HW PM2x4</div> <div></div> <div></div>				

Part List & HW For Multi-Box Items

Piece	Description	Qty
A	Top Board	1
B	Bottom Board	1
C	Door Left	1
D	Door Right	1
E	Back Board	1
F	Pillar	2
LC22A1	Leg	4

Piece	Description	Qty
HW1	Cambolt	4
HW2	CamLock	4
HW3	Dowel	4
HW4	Screw M 4.5 x 12.5 mm	24
HW5	Screw M 4 x 16 mm	4
HW6	Screw M 6 x 30 mm	2
HW7	Allen Key	1
HW8	Stopper	2
HW9	Handle	2
HW PM3	Mounting Plate	2
HW PM2	Mounting Plate	4

PREPARATION

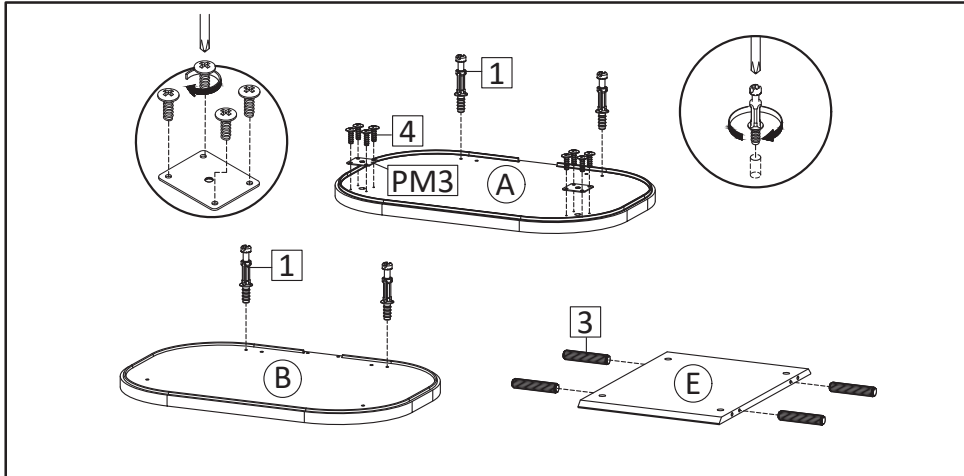
*Before beginning assembly of product, make sure all parts are present. Compare parts with part contents list and hardware contents list.

*If any part is missing or damaged, do not attempt to assemble the product.

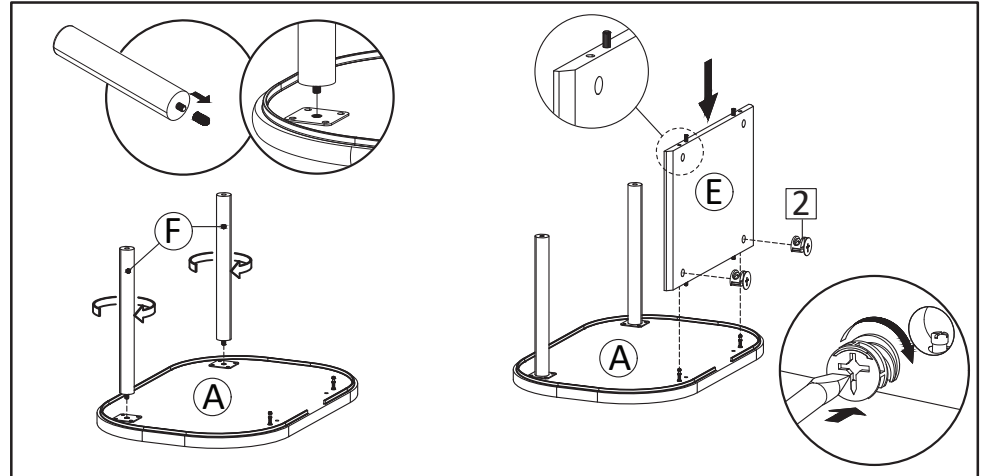
*Estimated Assembly Time: 45 minutes.

*Tools Required for Assembly (included): Allen Key

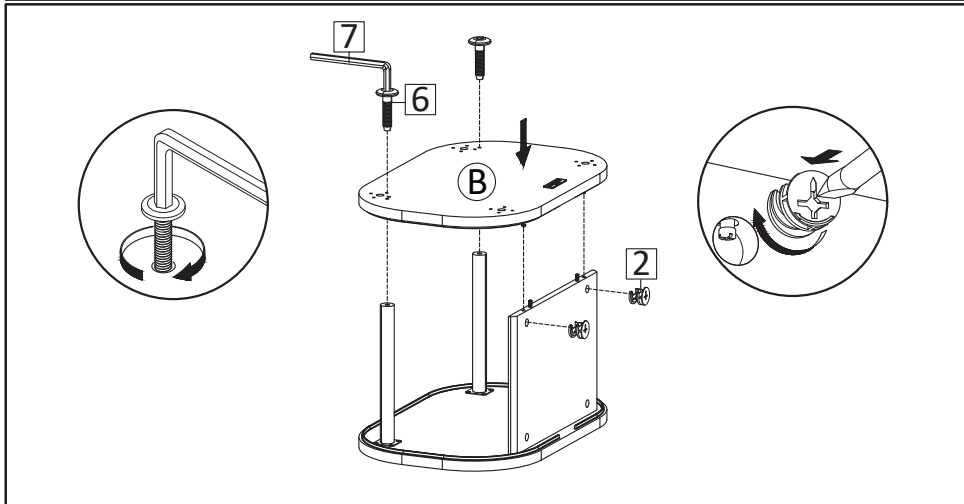
*If you are having difficulty, our friendly Customer Care team is always here to help. Please email customersupport@safavieh.com



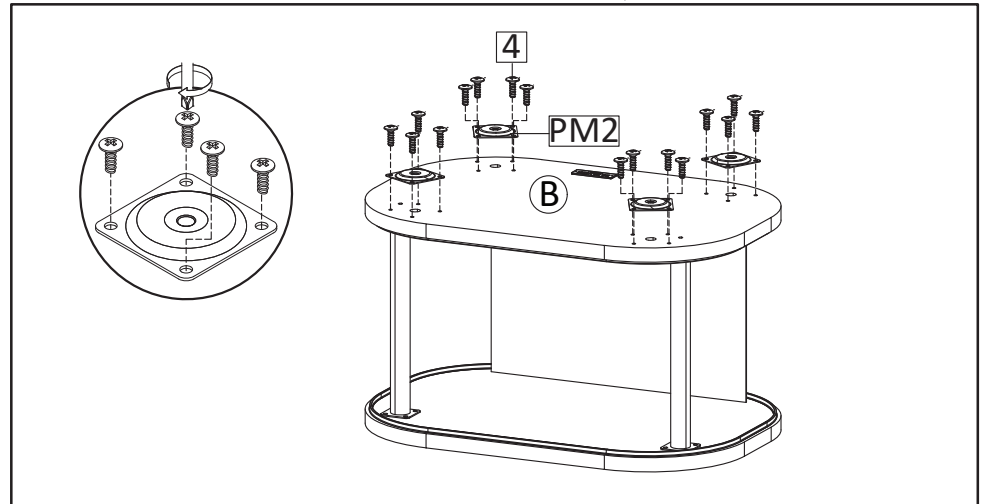
STEP1: Insert Cambolt (HW1) into Top Board (A) and Bottom Board (B). Insert Mounting Plate (HW PM3) secure with Screw M4.5x12.5mm (HW4) Into Top Board (A). Insert Dowel (HW3) into Back Board (E).



STEP2: Install Pillar (F) into Top Board (A). Tighten by rotating the Pillar clockwise. Attach Back Board (E), please notice the chamfer edge position as image. Insert Camlock (HW2) then tighten using screwdriver.



STEP3: Place Bottom Board (B) with the bolts of pillars get through the holes. Secure with Screw M6x30mm (HW6), tighten screws using Allen Key (HW7) as figure. Insert Camlock (HW2) then tighten using screwdriver.



STEP4: Install Mounting Plate (HW PM2) Into Bottom Board (B). Secure with Screw M4.5x12.5mm (HW4) as figure.

PREPARATION

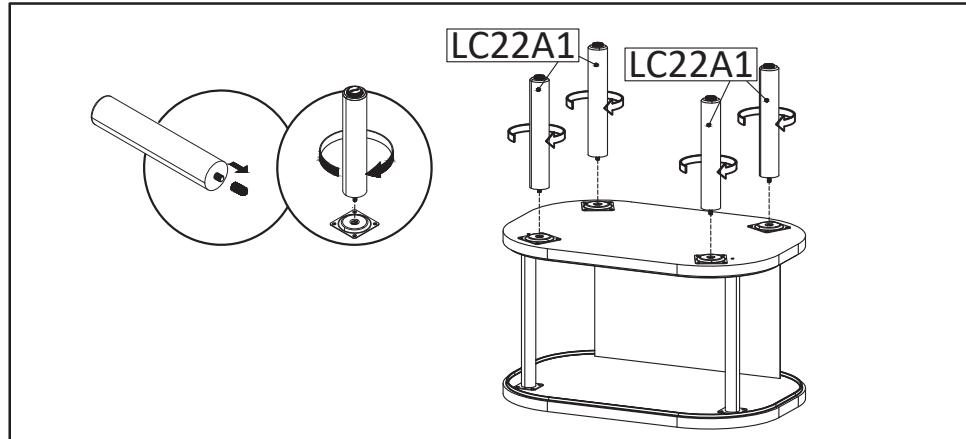
*Before beginning assembly of product, make sure all parts are present. Compare parts with part contents list and hardware contents list.

*If any part is missing or damaged, do not attempt to assemble the product.

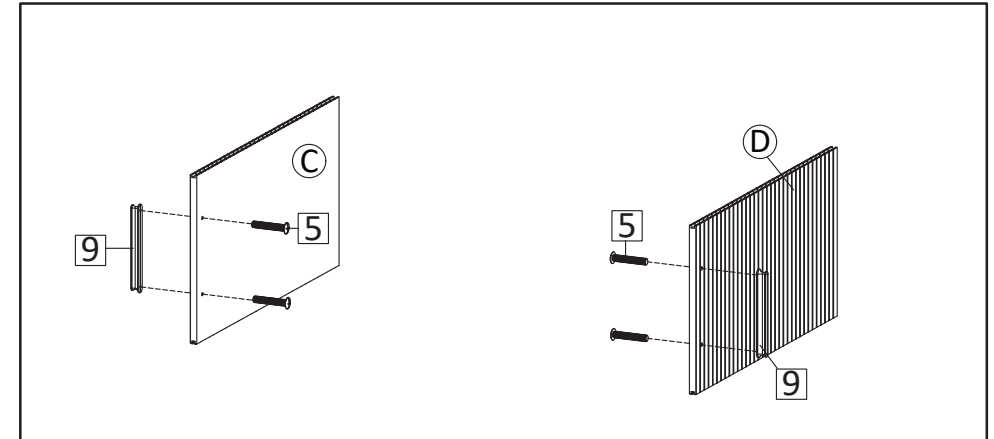
*Estimated Assembly Time: 45 minutes.

*Tools Required for Assembly (included): Allen Key

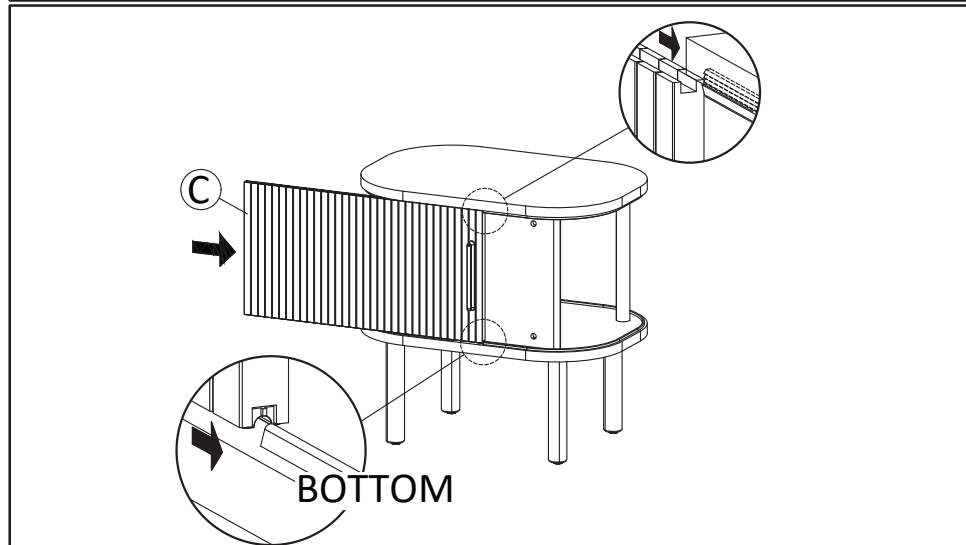
*If you are having difficulty, our friendly Customer Care team is always here to help. Please email customersupport@safavieh.com



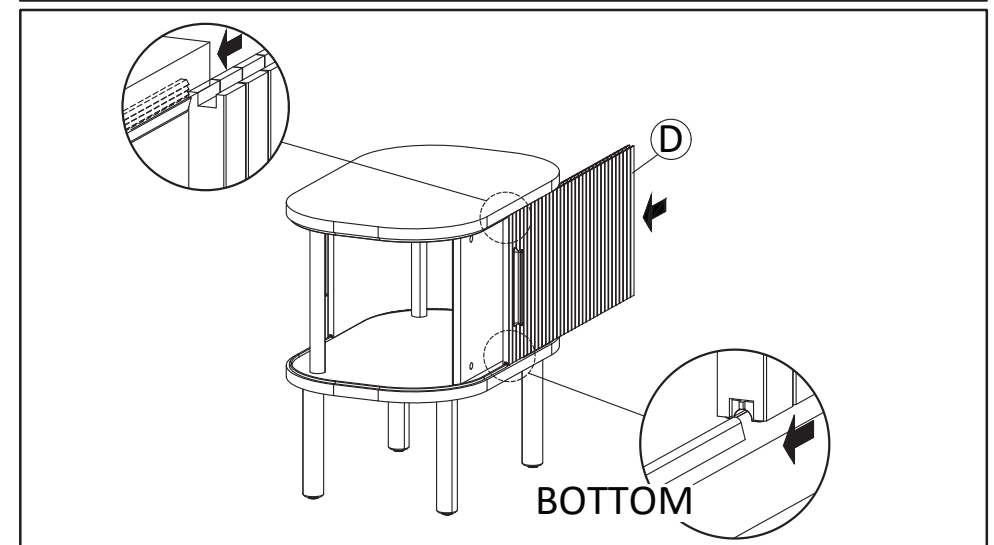
STEP5 : Insert Leg (LC22A1) into Mounting Plate, tighten by rotating the leg clockwise.



STEP6: Insert Handle (HW9) secure with Screw M4x16mm (HW5) into the holes on Doors (C&D).



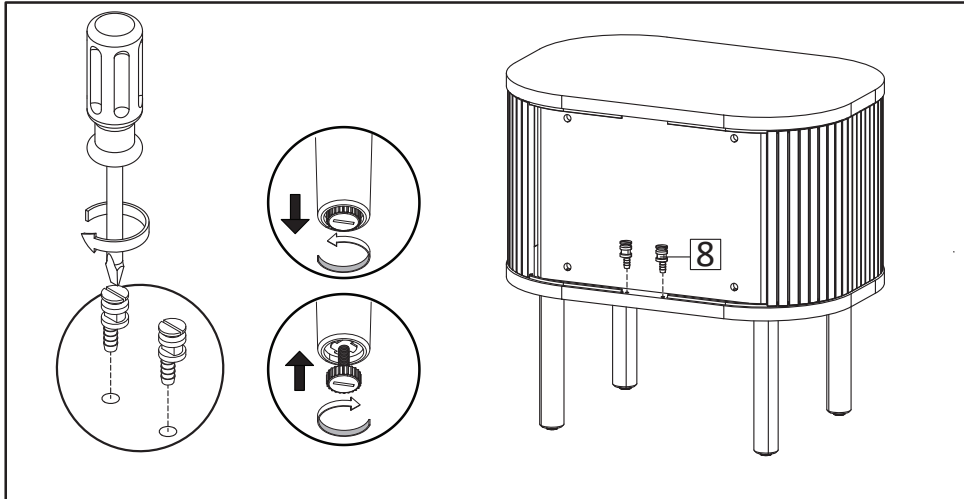
STEP7: Insert the Door (C) into the track. Carefully examine the tambour door. The side with plastic insert is placed at bottom track, while the side without plastic insert inside groove is for upper track.



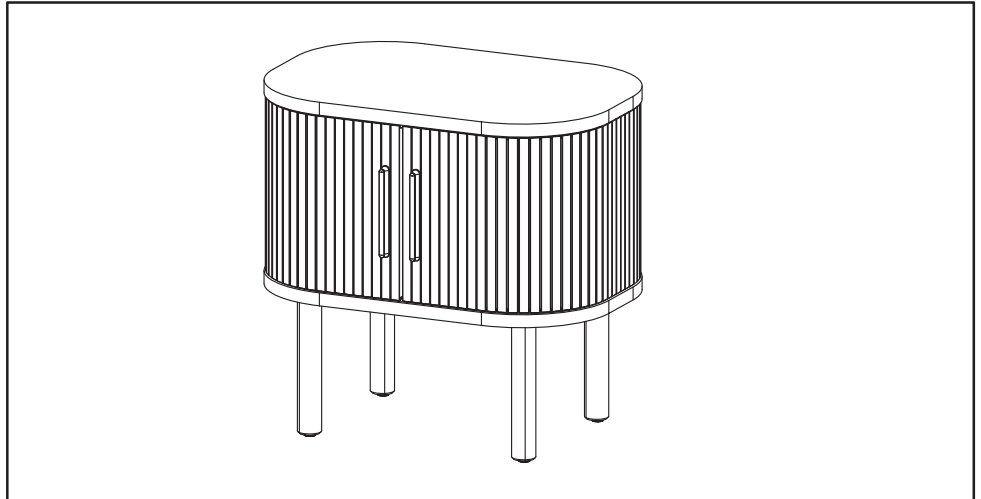
STEP8: Insert the Door (D) into the track. Carefully examine the tambour door. The side with plastic insert is placed at bottom track, while the side without plastic insert inside groove is for upper track.

PREPARATION

- *Before beginning assembly of product, make sure all parts are present. Compare parts with part contents list and hardware contents list.
- *If any part is missing or damaged, do not attempt to assemble the product.
- *Estimated Assembly Time: 45 minutes.
- *Tools Required for Assembly (included): Allen Key
- *If you are having difficulty, our friendly Customer Care team is always here to help. Please email customersupport@safavieh.com



STEP9: Insert Stopper (HW8) into Bottom Board (B) position as the above image. Place your furniture on level floor. The legs come with adjustable leveler, adjust it as needed until your furniture stands steadily on the floor.



STEP10: Assembly Complete.

TIPPING RESTRAINTS KIT INSTALLATION GUIDANCE

Different wall materials require unique wall fasteners.

The wall plugs (AA2) and screws (AA3) are designed for fixing to concrete walls only.

Please consult your local hardware store to ensure you are using the correct hardware for your wall type.

