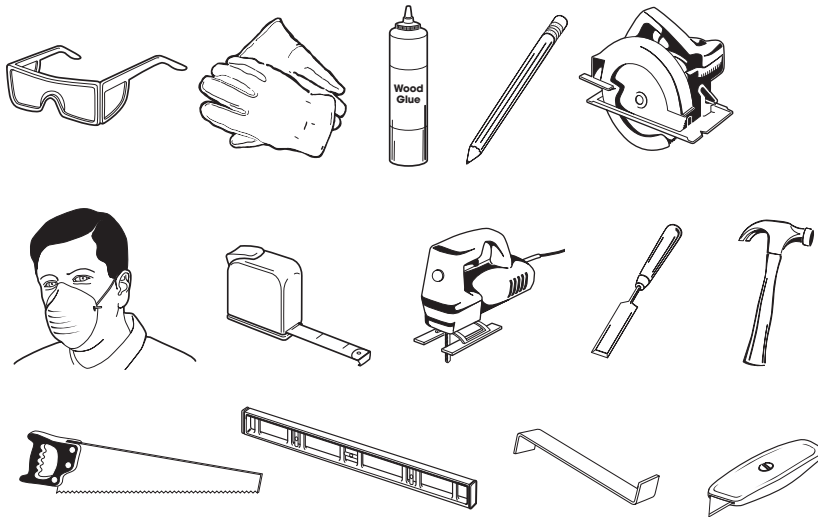


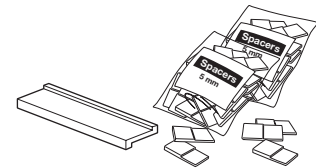
styleselections™

Tools Required for Installation

Common Tools



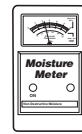
Other Tools and Supplies



Uniclic compatible tapping block and 5mm (3/16") spacers

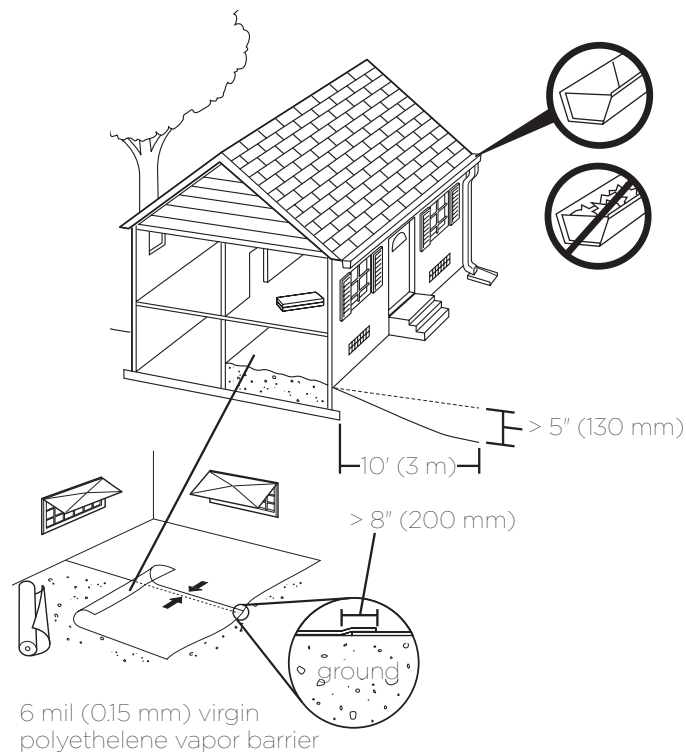


Finishing Putty



Moisture Meter

Job Site



For more information, visit [Lowes.com](https://www.Lowes.com) or call 877-888-8225

Site Requirements

Locking engineered hardwood is a durable floor covering, not intended as structural material. Locking engineered hardwood requires a clean, dry, secure subfloor that meets building codes. Locking engineered hardwood flooring can be installed above, on or below grade.

The following requirements are not intended to supersede federal, state or local building codes, but as with many other interior finish products, may require modifying existing structural components for successful installation. Owner assumes responsibility for compliance with all building codes.

All work involving water or moisture (plumbing, masonry, painting, plastering) must be completed prior to flooring installation. Building envelope must be complete and exterior doors and windows installed. Exterior grading and gutter downspouts should be completed and permanent HVAC systems in operation.

Precautions should be taken to protect floors from other trade work. Do not cover floors with plastic, red rosin, felt or wax paper or previously used cardboard. Instead, use a breathable material such as clean, dry, plain uncoated cardboard or craft paper; inks from printed cardboard could damage the hardwood floor. The floor should be thoroughly cleaned before covering to remove grit and debris that would damage the finish. The floor must be completely covered to eliminate uneven ambering from exposure to UV light.

Locking engineered hardwood flooring is suitable for use in climate controlled indoor installations only and should not be installed in rooms with floor drains or sump pumps. Room temperature should be 60-80°F, with relative humidity between 35-55%. These environmental conditions are specified as pre-installation requirements and must be maintained for the life of the product. Additionally, any HVAC system must be in operation for a minimum of 14 days prior to performing moisture tests or installation.

Building interiors are affected by two distinct humidity seasons—Heating and Non-Heating. Care should be taken to maintain humidity levels between 35-55% year round. As with all wood flooring, expansion and contraction will be minimized if the interior relative humidity is consistently maintained year round. Humidification and/or dehumidification systems may be necessary to maintain your home environment to prescribed relative humidity conditions.

All heating methods create dry, low humidity conditions. Humidifiers are recommended to prevent excessive shrinkage or gapping in wood floors due to seasonal periods of low humidity.

During the non-heating season proper humidity levels should be maintained by using an air conditioner or dehumidifier.

RADIANT FLOOR HEATING — This product can be used in combination with many types of in-floor heating. The heating system can be cast in a concrete floor or in a thin layer of filler on the surface of a concrete subfloor. It can also be installed under a wood subfloor or installed on the surface of the subfloor as an electrical matting as long as it meets the floor flatness requirements.

- A) Follow the instructions from the supplier of the floor heating system.
- B) Concrete subfloors must be installed and cured with no heat transfer for a minimum of 60 days.
- C) The heating system must be in operation for at least two weeks before installation. The system may be turned off or set to a suitable installation temperature (65 to 72°F).
- D) The flooring surface temperature, which is the surface of the subfloor or the heat radiating from electric heating mats, should not exceed 84°F (29°C).

CAUTION — Excessive floor heating will damage flooring planks. Radiant heating systems create dry heat that lowers interior humidity levels. It may be necessary to add supplemental humidity in order to maintain recommended RH levels (35-55%) and prevent damage to the wood floor.

DO NOT install this product in full bathrooms.

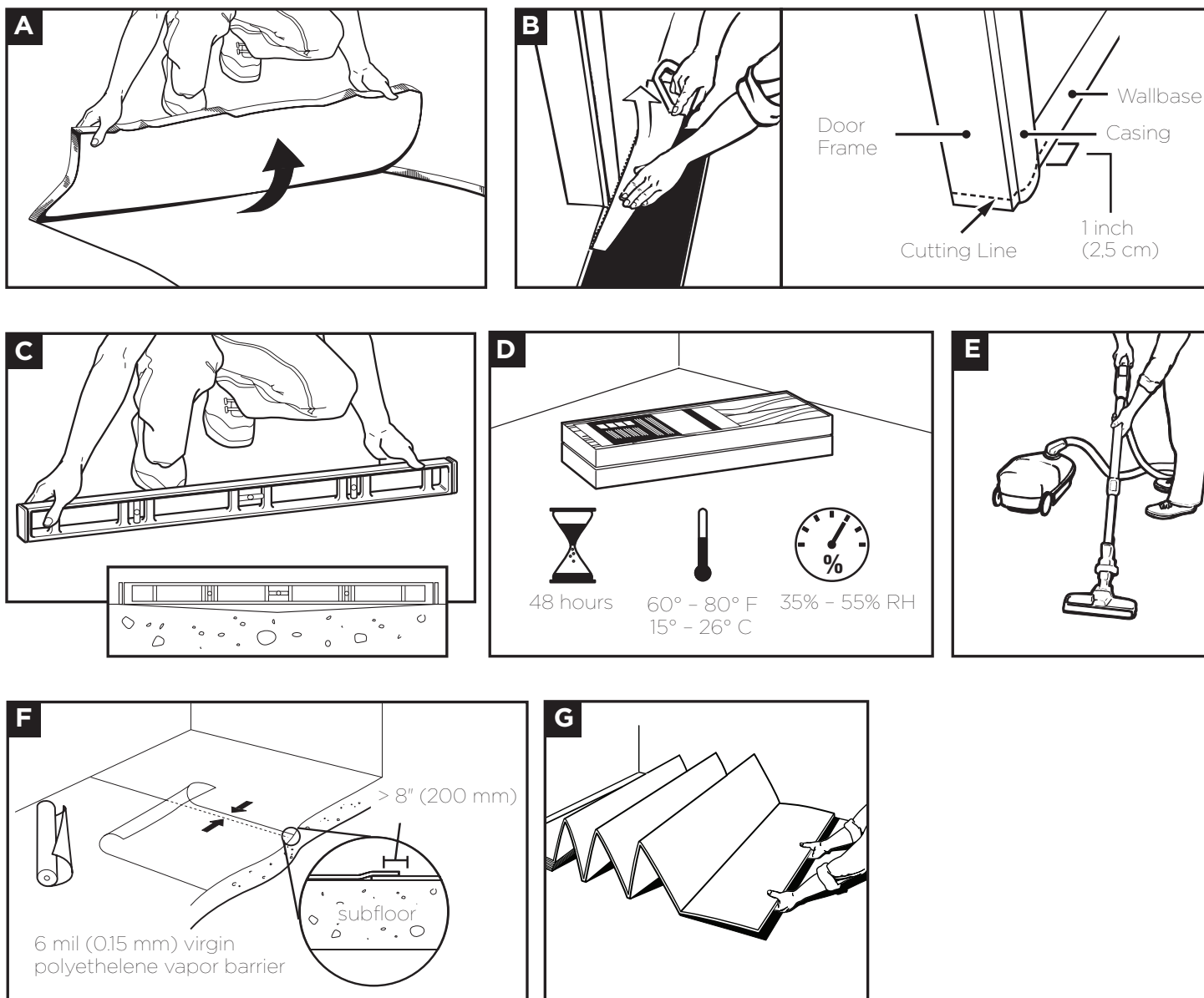
A moisture test is strongly recommended to determine if high moisture exists in the subfloor. When using a calcium chloride moisture test for concrete subfloors (ASTM 1869), values must be ≤ 3 lbs/1000ft²/24-hr or $<75\%$ RH with an in situ probe (ASTM F2170). Moisture readings of wood subfloors must be $\leq 12\%$.

Acceptable job site conditions, including relative humidity and subfloor moisture conditions, must be maintained throughout the lifetime of the flooring.

This product is installed as a floating floor only and requires the use of T-moldings in doorways 4 ft (1.22m) or less and in rooms 40 feet (12.2 m) or larger in length or width. Floor movement must not be constrained by glue, nails, screws, hardware or other fixed obstructions.

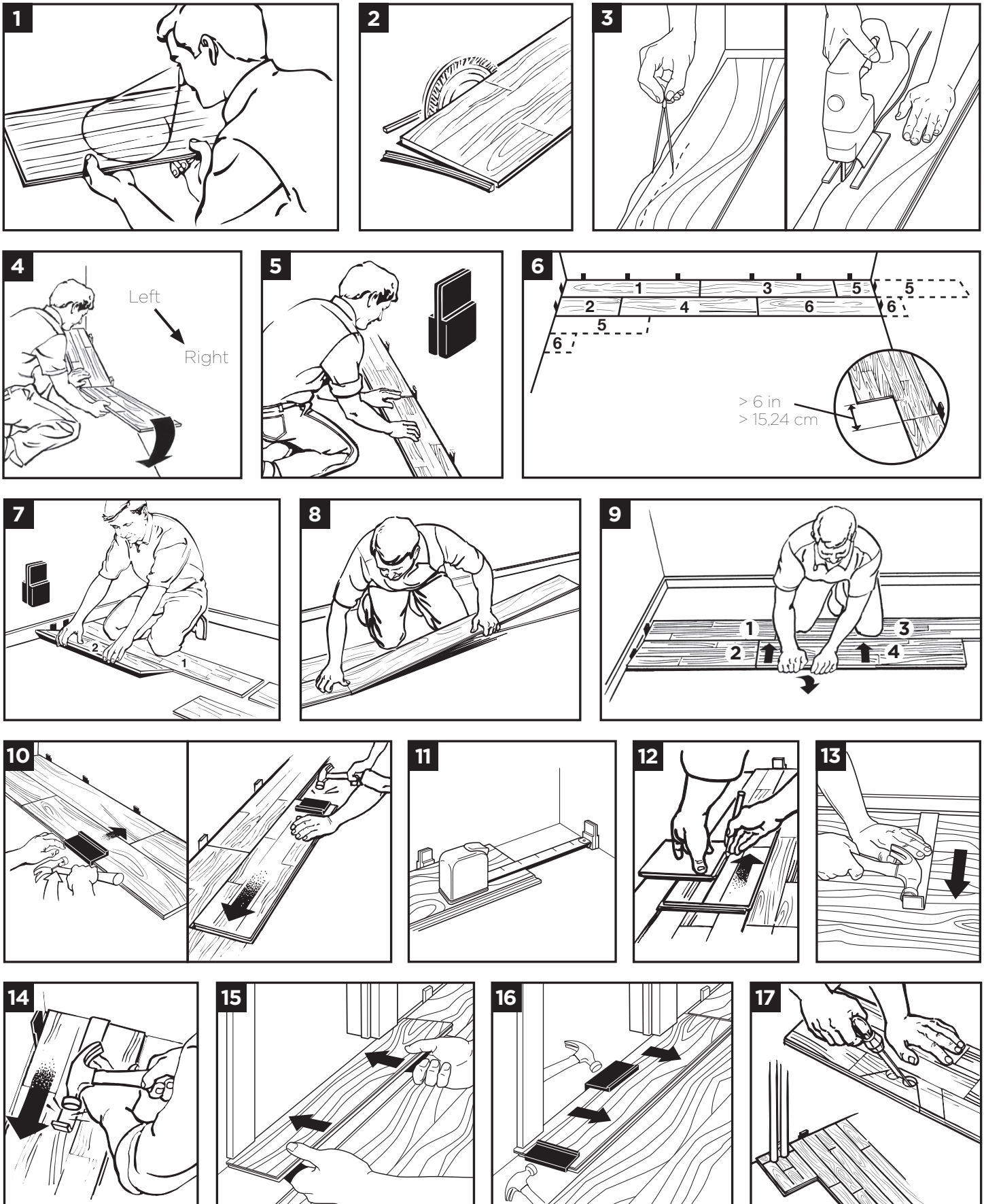
This product must be installed in accordance with these installation instructions.

Site and Material Preparation



- Remove carpet and padding. Also remove any wood flooring installed on concrete. Do not remove products unless they are asbestos-free.
- Undercut door frame and wallbase. Slide the flooring at least 1/4" underneath the door frame and wallbase. Also leave a concealed 3/8" minimum expansion space under each.
- Remove bumps or peaks in subfloor and fill depressions with floor leveling compound to ensure no more than 3/16" unevenness per 10-foot span.
- Acclimate unopened product before installation for a minimum of 48 hours.
- Clean debris from subfloor before installation.
- For concrete subfloors, install vapor barrier with overlapped seams of 8" or more.
- For planks without attached underlayment**, install over single layer of underlayment appropriate for locking engineered wood floors. **For planks with attached underlayment**, it is acceptable to install Pergo Gold™ underlayment (Lowes Part # 670312) prior to flooring installation if desired. Make sure to follow the Pergo Gold installation instructions, taking special care to seal all foam edges with sealing tape and repair all rips and perforations in the underlayment vapor barrier prior to flooring installation. A separate vapor barrier should not be used in conjunction with Pergo Gold.

Flooring Installation



Flooring Installation

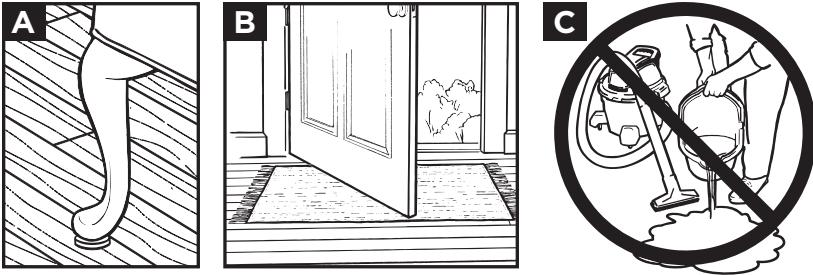
1. Inspect each plank. Floor should be installed blending planks from several cartons at the same time to ensure good color and shade mixture throughout the installation.
2. For the first row along straight walls, remove the tongue on all long side joints and on the short side of the 1st plank only.
3. For uneven walls, trace contour on tongue-side of plank and cut.
4. Assemble the first row tongue side toward wall. Insert the end tongue into the end groove and rotate downward to assemble. Keep the planks aligned and the joints closed.
5. Two spacers thick side to thick side = 3/8".
6. Provide a 3/8" space for expansion on all sides. First piece must be at least 8" long. Start new rows with pieces trimmed from previous row. Ensure at least a 6" end joint offset.
7. At a slight angle, insert the tongue of plank 2 into the groove of plank 1 until the laminate edges meet, and then rotate down until the joints lock.
8. Join the short end of the plank first. There will be a gap on the long side joints when the plank is rotated down.
9. Raise the outside edge of the plank upward approximately 1". Maintain this angle as you push the plank in until the laminate edges meet. Rotate downward on the plank until the joint locks. Repeat these steps to complete the installation. **Installation Tip: Place a carton of planks across the end of the row being installed to keep installed planks in place during installation.**
10. **Alternate Tap Method:** Align the tongues into the grooves of the long and short sides of the planks. Install the long side first by placing a tapping block no closer than 8" from either end and tap lightly along the long side until the joint is closed tightly. Then tap the end using the tapping block into a locked position. **Note: Uneven tapping or use of excessive force may damage the joint.**
11. Ensure there will be a 3/8" gap (after the joint is closed) to the wall for expansion.
12. For the last row, align the plank to be used on top of the 2nd to last row. Using a full width plank as a spacer, trace wall contour and cut plank.
13. For the last row, install the long side tongue into the groove with the end joint aligned. Using a pull bar and hammer, work evenly along the length of the plank and lightly tap the joint closed.
14. After tapping the long side joint closed, tap the short side closed, using a tapping block or a pull bar.

Installation Under Doorway Frames

15. Slide plank under pre-cut door frame.
16. Tap the long side joint closed first. Then tap the end joint closed.

Installation Around Fixed Objects (such as Pipes)

17. Allow 3/8" expansion space around pipes or other fixed objects.



Care and Cleaning

- A) Place felt floor protectors under legs of movable furniture. Chair casters should be rubber — not plastic or metal.
- B) Place walk-off mats at entrances.
- C) **Dust mop only. NO damp or wet mopping.** If needed, lightly spray hardwood floor cleaner on a terry cloth or microfiber mop before placing on the floor. **DO NOT** use abrasive cleaners, detergents, soaps, waxes or polishes. Use correct hard surface vacuum tools. **DO NOT** use rotating beater bars, floor scrubbers, steamers, jet mops or similar products. **DO NOT** allow liquids to stand on the floor. Wipe up spills immediately.
- D) **Engineered hardwood reacts to sunlight.** Hardwood contains certain types of acids in their cellular structure. With exposure to sunlight these acids begin to amber. The color change is referred to as patina. The hardwood will reach its own natural warmth and patina level and stop ambering. The amount of patina is directly related to the species, amount of acids and the level of sunlight. The entire floor will reach the same patina level over time. This is often noticed after a rug is removed and the floor is noticeably different in color underneath. If you remove the rug and expose the entire floor to the same amount of light, it will even out over time and become uniform in color.

WARNING: Wood Dust

- Cutting, sanding or machining wood products produces wood dust. While wood products are not hazardous under the OSHA Hazard Communication Standard (29 CFR 1910.1200), the International Agency for Research on Cancer (IARC) and the state of California have classified wood dust as a human carcinogen.
- Airborne wood dust can cause respiratory, skin and eye irritation. Power tools should be equipped with a dust collector. Use an appropriate NIOSH-designated dust mask. Avoid dust contact with skin and eyes.
- In case of irritation flush eyes with water. If needed seek medical attention. If dermatitis occurs, seek medical attention.
- The products in this carton **DO NOT** contain asbestos or crystalline silica.
- **DO NOT MECHANICALLY CHIP OR PULVERIZE EXISTING RESILIENT FLOORING, BACKING, LINING FELT, ASPHALTIC “CUTBACK” ADHESIVES OR OTHER ADHESIVES.**
- **DO NOT** sand existing resilient tile, sheet flooring, backing or felt linings. These products may contain asbestos fibers that are not readily identifiable. Inhalation of asbestos dust can cause asbestosis or other serious bodily harm. Check with local, state and federal laws for handling hazardous material before attempting the removal of these floors.

IMPORTANT HEALTH NOTICE FOR MINNESOTA RESIDENTS ONLY:

THESE BUILDING MATERIALS EMIT FORMALDEHYDE. EYE, NOSE, AND THROAT IRRITATION, HEADACHE, NAUSEA AND A VARIETY OF ASTHMA-LIKE SYMPTOMS, INCLUDING SHORTNESS OF BREATH, HAVE BEEN REPORTED AS A RESULT OF FORMALDEHYDE EXPOSURE. ELDERLY PERSONS AND YOUNG CHILDREN, AS WELL AS ANYONE WITH A HISTORY OF ASTHMA, ALLERGIES, OR LUNG PROBLEMS, MAY BE AT GREATER RISK. RESEARCH IS CONTINUING ON THE POSSIBLE LONG-TERM EFFECTS OF EXPOSURE TO FORMALDEHYDE. REDUCED VENTILATION MAY ALLOW FORMALDEHYDE AND OTHER CONTAMINANTS TO ACCUMULATE IN THE INDOOR AIR. HIGH INDOOR TEMPERATURES AND HUMIDITY RAISE FORMALDEHYDE LEVELS. WHEN A HOME IS TO BE LOCATED IN AREAS SUBJECT TO EXTREME SUMMER TEMPERATURES, AN AIR-CONDITIONING SYSTEM CAN BE USED TO CONTROL INDOOR TEMPERATURE LEVELS. OTHER MEANS OF CONTROLLED MECHANICAL VENTILATION CAN BE USED TO REDUCE LEVELS OF FORMALDEHYDE AND OTHER INDOOR AIR CONTAMINANTS. IF YOU HAVE ANY QUESTIONS REGARDING THE HEALTH EFFECTS OF FORMALDEHYDE, CONSULT YOUR DOCTOR OR CALL LOCAL HEALTH DEPARTMENT.

WARRANTY CONDITIONS

The owner/installer assumes all responsibility for final inspection of product quality. Examine flooring for color, finish and style prior to installation. If material is unacceptable, contact the seller immediately. Wood is a natural product and contains characteristics such as variations in color, tone and graining. Flooring is manufactured in accordance with industry standards, which allows manufacturing and natural deficiency tolerances up to 5% of the total installation. Installer should work from minimum of 3 cartons at the same time to ensure good color and shade blend. The installer must use reasonable selectivity and hold out or cut off piece with deficiencies. DO NOT install undesirable pieces. Flooring warranties DO NOT cover materials with visible defects once they are installed. Installation is acceptance of product quality.

It is the responsibility of the installer and owner to ensure that jobsite, environmental, subfloor and subsurface conditions involved meet or exceed all requirements as outlined in installation instructions prior to installation. Manufacturer declines all responsibility for product performance or installation failure due to subfloor, substrate or environmental deficiencies or jobsite conditions.

Manufacturer warrants the factory applied finish will not wear through or will not lack finish adhesion as a result of normal use. An additional structural warranty may be applicable to this engineered hardwood. See the complete product warranty for details.

For service under this warranty please contact your local Lowe's store. Describe the problem and in many cases, they can provide you with a solution.

For installation, maintenance and technical questions please call (877) 888-8225.

StyleSelections locking engineered hardwood flooring is manufactured by
Unilin Flooring North America LLC
550 Cloniger Drive
Thomasville, NC 27360



Although originally designed as a durable floor covering, many consumers have started using locking engineered hardwood flooring on walls to give their rooms more character and to create a feature or accent wall.

Locking engineered hardwood can be utilized as a decorative covering over an existing clean, dry, secure and vertical wall that meets building codes. The wall substrate should be primed or painted drywall (gypsum board) only. Do not install directly over wallpaper or paneling. Locking engineered hardwood is not intended to be used on ceilings, countertops or as any type of structural material.

The installation wall should only run vertical to the floor. Sloping walls and surfaces that are parallel to the floor, such as ceilings or soffits, should not be selected. Limit installations to a maximum of 40 feet in length and a maximum of 10 feet in height.

Locking engineered hardwood is suitable for an accent wall when used in climate controlled (35-55% RH and 60-80° F) indoor installations only. Acclimate unopened product lying flat in the room where it is to be installed for at least 48 hours. Mix planks from different cartons as you install to maximize the natural appearance.

Check wall for moisture, visible water stains or leaking windows. Do not install locking engineered hardwood over a wall with known moisture damage. Do not install in areas near water sources such as a backsplash over a sink or bathtub. Acceptable job site conditions, including relative humidity and wall moisture conditions, must be maintained throughout the life of the locking engineered hardwood application.

Check wall for flatness within $\frac{3}{16}$ " over 10 feet. Correct any unevenness before installing to allow the locking engineered hardwood planks to lie flat without rocking.

The following requirements are not intended to supersede federal, state or local building codes, but as with many other interior finish products, may require modifying existing structural components for successful installation. Owner assumes responsibility for compliance with all building codes, including maintaining the required distance from heat sources such as fireplaces.

WARNING: For a safe and secure installation, this product **MUST** be installed in accordance with these installation instructions.

Tools Required for Installation:

- Caulk gun
- Utility knife
- Stud finder (electronic)
- Carpenters level or laser level
- Chalk line
- 18 gauge brand nail gun (electric or air)
- Tape measure
- Pencil
- Screw gun or drill driver
- Safety glasses
- Dust mask
- Gloves

Materials Required for Installation:

- 1 1/2" - 1 3/4" brad nails
- 100% silicone adhesive caulk (clear)
- 1 1/2" - 1 3/4" dry wall screws
- Painters tape

Other Tools and Materials:

- Step ladder
- Hammer
- Uniclic® appropriate tapping block
- Pull bar
- Saw for cutting locking engineered hardwood planks
- Pry bar (for removing existing base or trim)
- Wall base and quarter round moldings (to frame out accent wall)

Remove baseboards from the accent wall and locate the wall studs using the stud finder tool. Mark vertical lines over all studs. Use painters tape to extend stud location to ceiling if needed. (Figure 1)

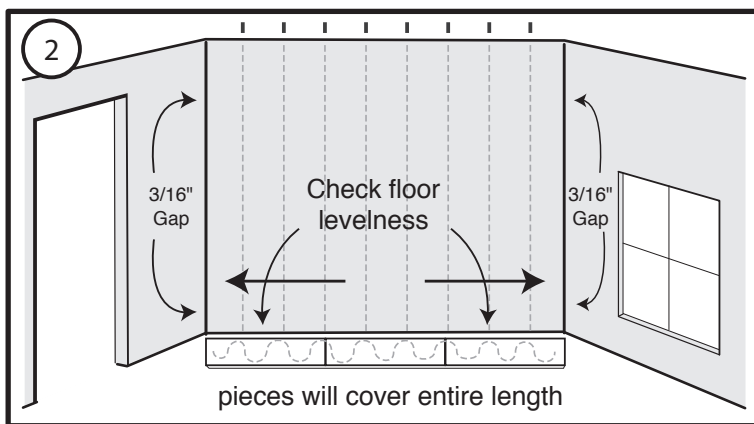
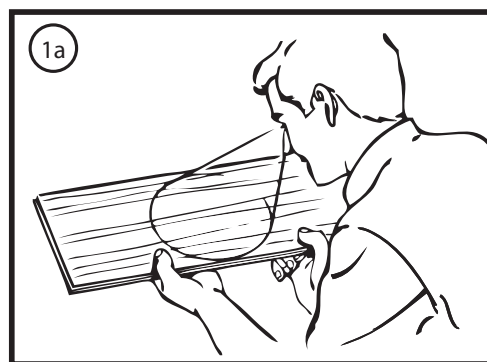
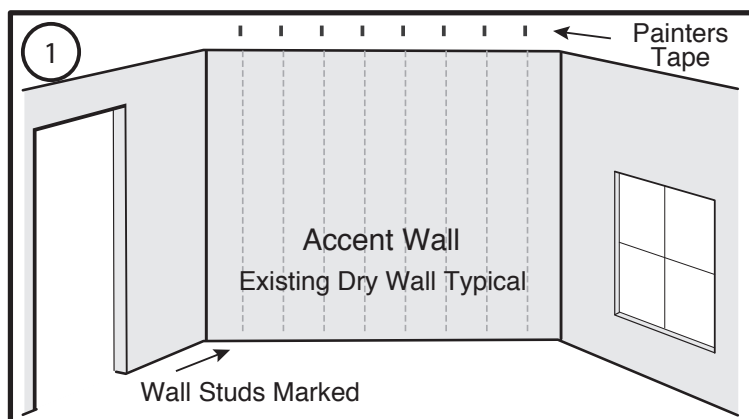
Turn off power while working around wall outlets and light switches. Pay special attention to avoid contact with electrical wiring.

Inspect each plank for damage before installing. (Figure 1a) Do not install damaged planks. You can use locking engineered hardwood planks with or without an attached pad. There is no need to remove the pad, so treat the installation the same for both types of planks.

Lay the planks on the floor with the face side up and the groove side toward the wall. Assemble the short ends of the planks together and measure length to fit the first row (bottom).

Cut the last piece as needed leaving a $\frac{3}{16}$ " gap against any adjoining walls, if applicable, and click it into place. (Figure 2)

NOTE: You may need to adjust placement of the first plank row to account for any floor unevenness so that the first row is perfectly straight and all end joints remain square and tight.



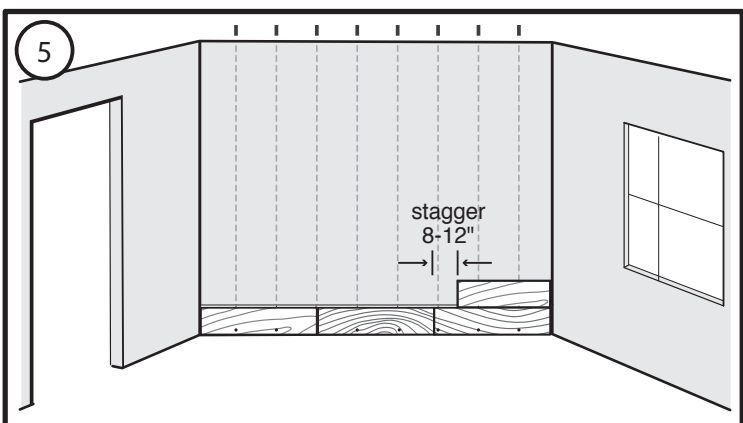
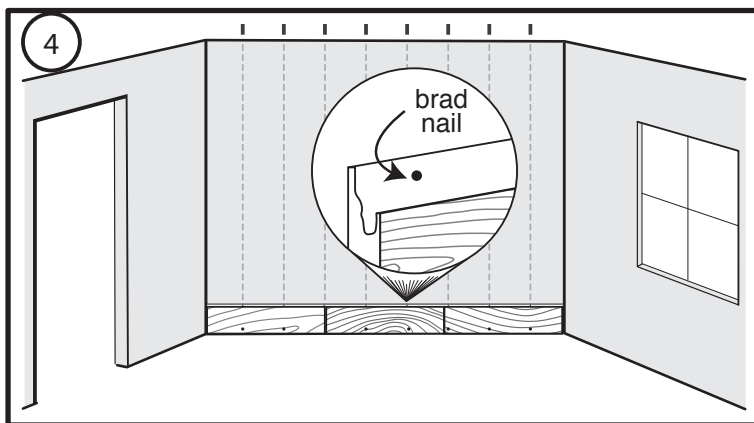
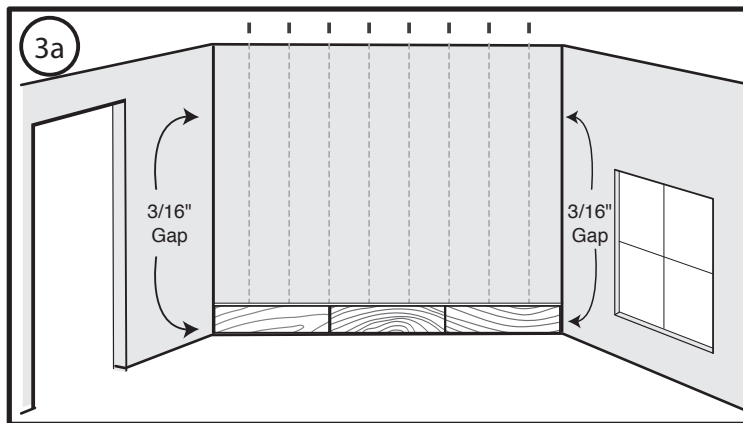
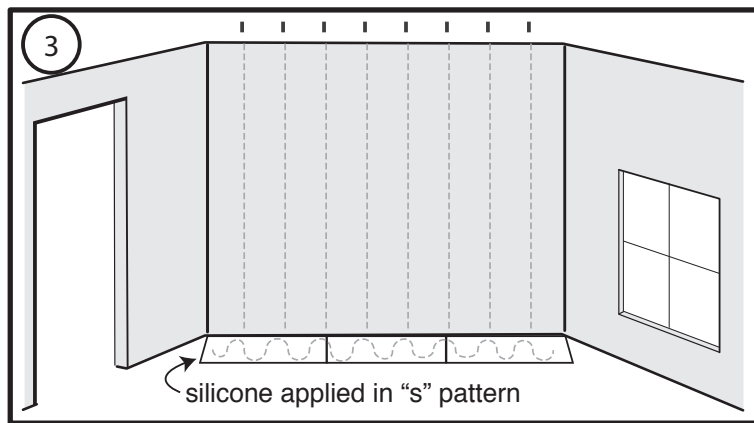
Carefully flip the connected row of planks over so they are now face down and the tongue side is toward the wall. You may need assistance to flip the connected row of planks over, depending on the length of your installation. Make sure that the first row is perfectly straight and the aligned joints remain square and tight. Apply a bead of 100% silicone adhesive caulk to the back side of each locking engineered hardwood plank in the first row. If you're using a locking engineered hardwood plank with an attached pad apply silicone directly onto the pad on the back of the plank. (Figure 3)

Carefully tilt the row of connected planks against the wall with the tongue side toward the floor, re-level and press to the wall. (Figure 3a)

Drive a brad nail into each plank at each wall stud through the shallow area of the extended groove (see inset diagram). Take care that the brad nail heads are not raised, but also don't force them all the way through the groove. This will allow easy connection of the next row of planks. You must also place drywall screws every 16" into the wall studs or sill plate along the bottom edge of the first row of planks where they will be covered by the wall base. (Figure 4)

Start the second row from the right side. Cut the first plank and glue with silicone adhesive caulk. Fit plank by angling tongue into groove and wiggle into place. Use tapping block as needed. Drive a brad nail into each plank through the shallow area of the extended groove at each wall stud. (Figure 5)

NOTE: A joint "stagger" of 8 to 12 inches looks most natural. Avoid allowing plank ends to align.



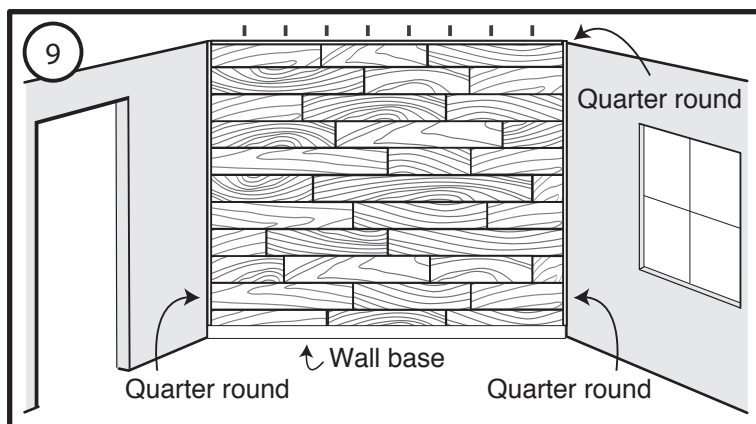
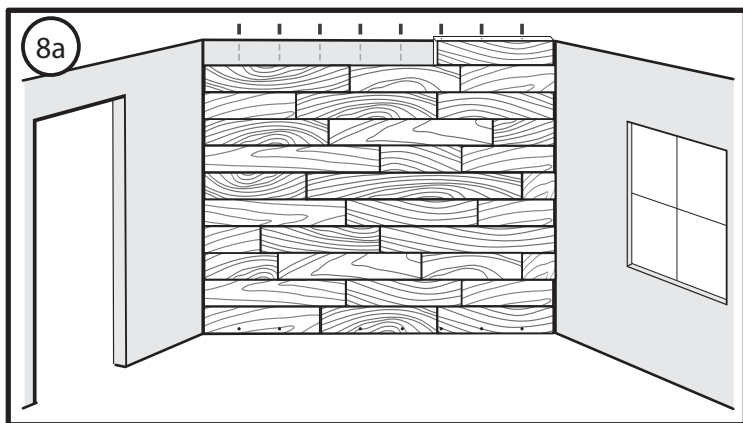
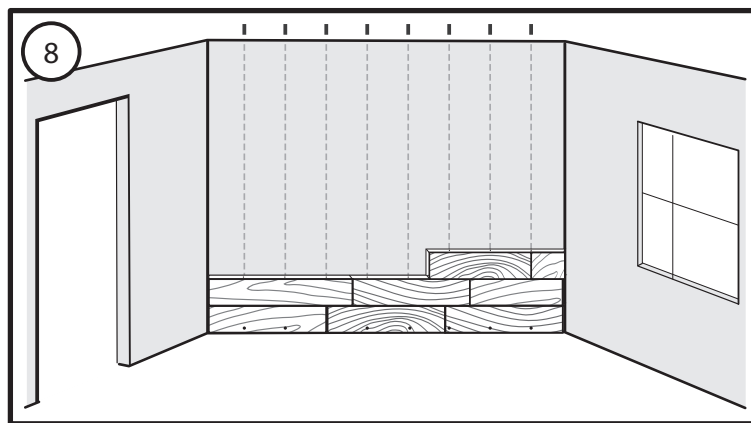
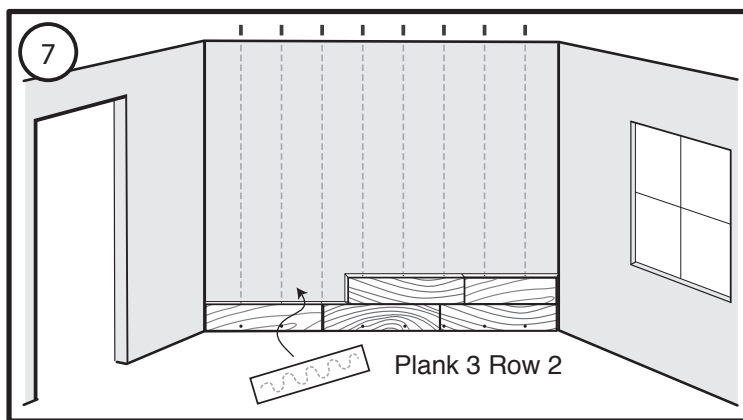
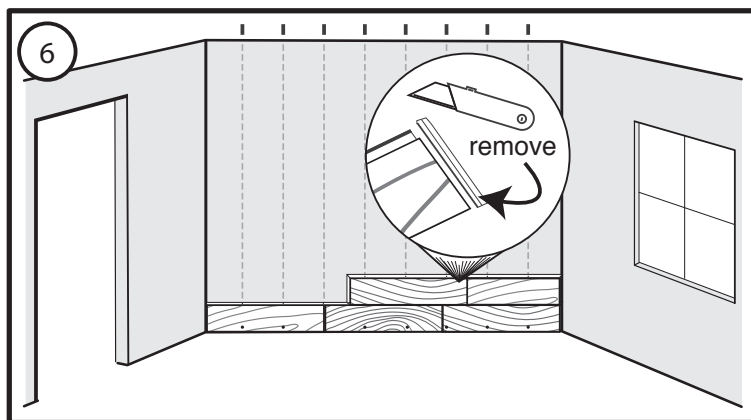
Plank 2 of row 2 (and each plank thereafter in row 2) will be modified by removing the short end tongue. Score the tongue with a utility knife 3 – 4 times to remove. You will now have a square end. (Figure 6)

Apply silicone adhesive caulk in an “S” pattern and install modified boards by tilting into place. Tighten joints as needed with a tapping block or pull bar. Drive a brad nail into each plank through the shallow area of the extended groove at each wall stud. (Figure 7)

Repeat this process for each plank working your way up to the last row. (Figure 8)

For the last row of the installation, use painters tape to mark the stud location for brad nailing. Cut all planks in the last row to the required width to complete the installation. Complete the installation as you have the earlier rows. (Figure 8a)

Use quarter round for inside corners and ceiling. Finish with wall base board of your choice. (Figure 9)





Although originally designed as a durable floor covering, many consumers have started using locking engineered hardwood flooring on walls to give their rooms more character and to create a feature or accent wall.

Locking engineered hardwood can be utilized as a decorative covering over an existing clean, dry, secure and vertical wall that meets building codes. The wall substrate should be primed or painted drywall (gypsum board) only. Do not install directly over wallpaper or paneling. Locking engineered hardwood is not intended to be used on ceilings, countertops or as any type of structural material.

The installation wall should only run vertical to the floor. Sloping walls and surfaces that are parallel to the floor, such as ceilings or soffits, should not be selected. Limit installations to a maximum of 40 feet in length and a maximum of 1 plank length in height.

Locking engineered hardwood is suitable for an accent wall when used in climate controlled (35-55% RH and 60-80° F) indoor installations only. Acclimate unopened product lying flat in the room where it is to be installed for at least 48 hours. Mix planks from different cartons as you install to maximize the natural appearance.

Check wall for moisture, visible water stains or leaking windows. Do not install locking engineered hardwood over a wall with known moisture damage. Do not install in areas near water sources such as a backsplash over a sink or bathtub. Acceptable job site conditions, including relative humidity and wall moisture conditions, must be maintained throughout the life of the locking engineered hardwood application.

Check wall for flatness within $\frac{3}{16}$ " over 10 feet. Correct any unevenness before installing to allow the locking engineered hardwood planks to lie flat without rocking.

The following requirements are not intended to supersede federal, state or local building codes, but as with many other interior finish products, may require modifying existing structural components for successful installation. Owner assumes responsibility for compliance with all building codes, including maintaining the required distance from heat sources such as fireplaces.

WARNING: For a safe and secure installation, this product **MUST** be installed in accordance with these installation instructions.

Tools Required for Installation:

- Caulk gun
- Utility knife
- Stud finder (electronic)
- Carpenters level or laser level
- Chalk line
- 18 gauge brand nail gun (electric or air)
- Tape measure
- Pencil
- Screw gun or drill driver
- Safety glasses
- Dust mask
- Gloves

Materials Required for Installation:

- 1 1/2" - 1 3/4" brad nails
- 100% silicone adhesive caulk (clear)

Other Tools and Materials:

- Hammer
- Uniclic® appropriate tapping block
- Pull bar
- Saw for cutting locking engineered hardwood planks
- Pry bar (for removing existing base or trim)
- Chair rail, wall base and quarter round moldings (to frame out accent wall)

Measure the length of your locking engineered hardwood plank and the length of the wall area to determine the total square footage area. Order that amount of flooring plus an additional 10% for incorrect cuts.

Remove all base and trim from accent wall. Measure from the floor a distance equal to your locking engineered hardwood plank plus one inch then level and mark the wall with a chalk line. With an electronic stud finder locate and mark wall studs. (Figure 1)

Turn off power while working around wall outlets and light switches. Pay special attention to avoid contact with electrical wiring.

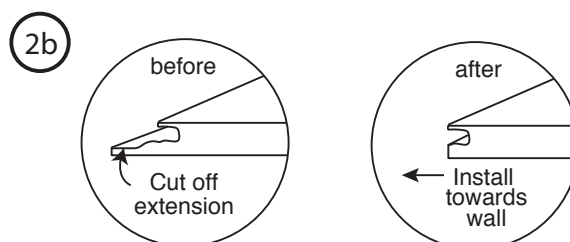
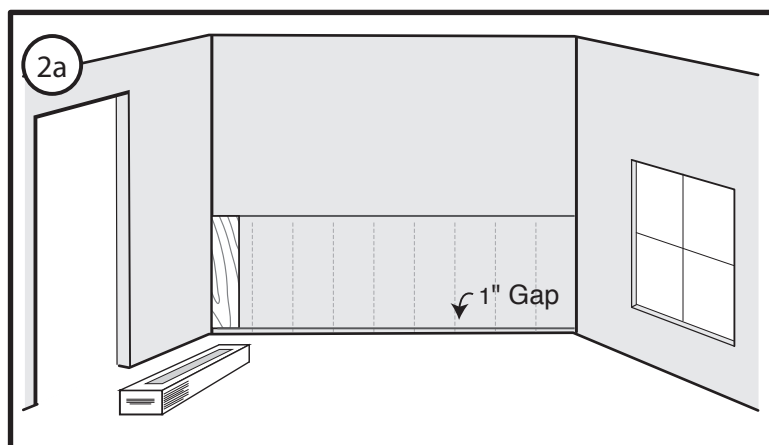
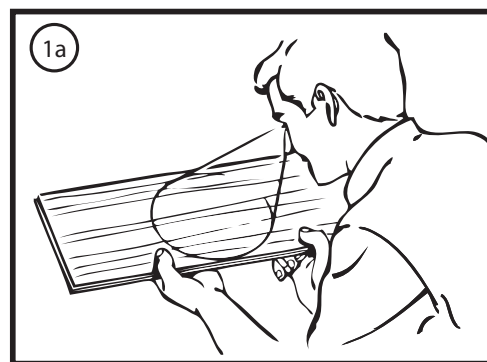
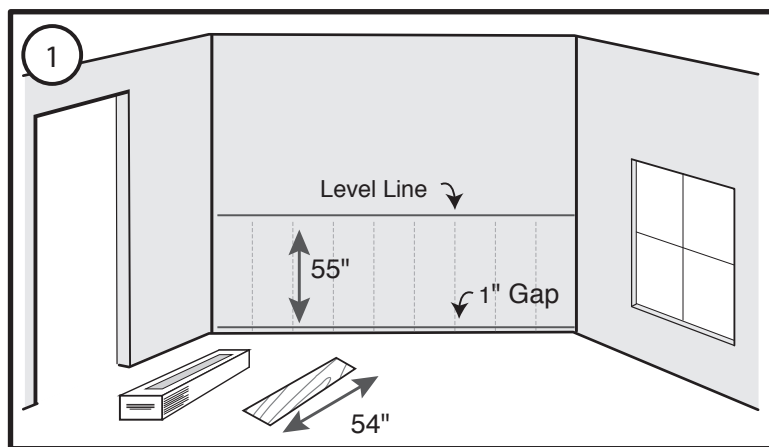
Inspect each plank for damage before installing. (Figure 1a)

Do not install damaged planks. You can use locking engineered hardwood planks with or without an attached pad. There is no need to remove the pad, so treat the installation the same for both types of planks.

Start from the left side with the short side tongue up and long side groove toward the wall. Place one plank against the wall and align at the top to test fit. You will want a 1" gap at the bottom of the plank. (Figure 2a)

Determine the appropriate number of vertical planks to fill the wall. For the best appearance, the first and last planks should be approximately the same width. Cut them as needed based on the width of your installation and the width of your planks.

If you don't need to cut the first plank, remove lower extension of long side groove with saw or utility knife. (Figure 2b)



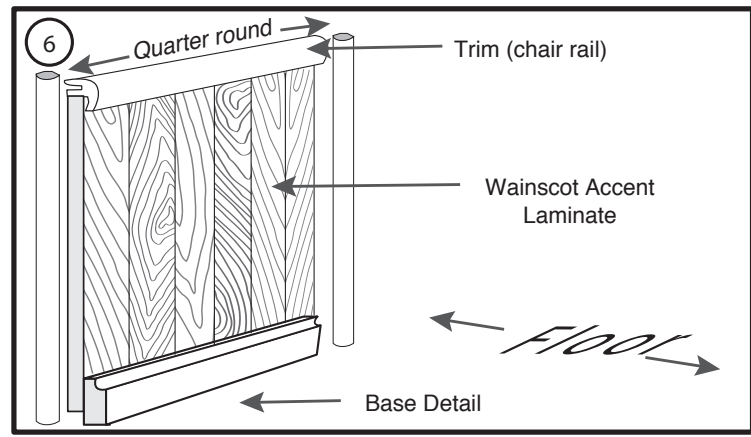
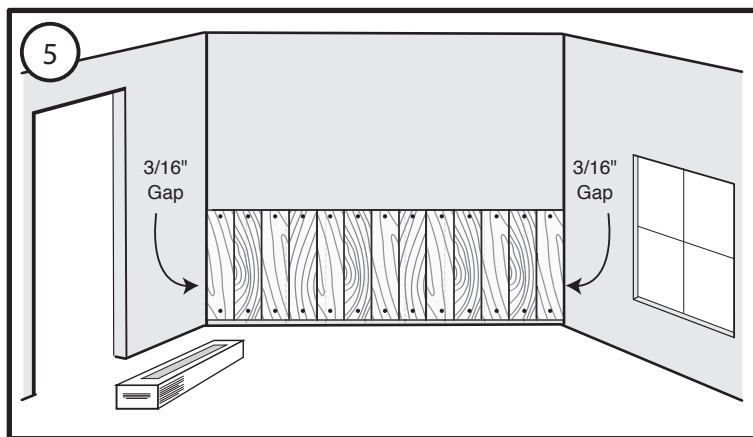
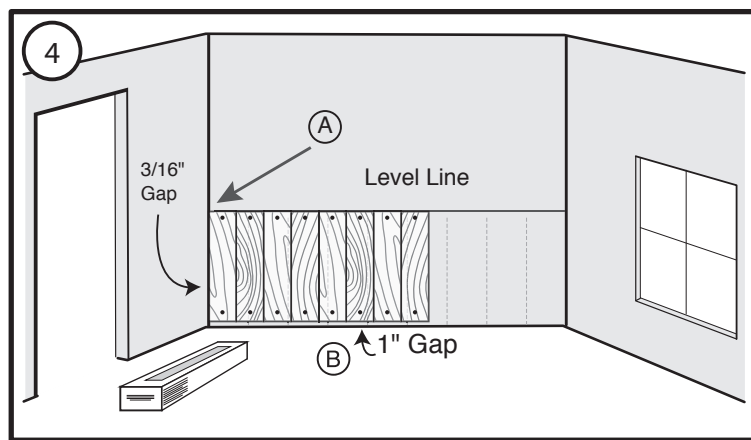
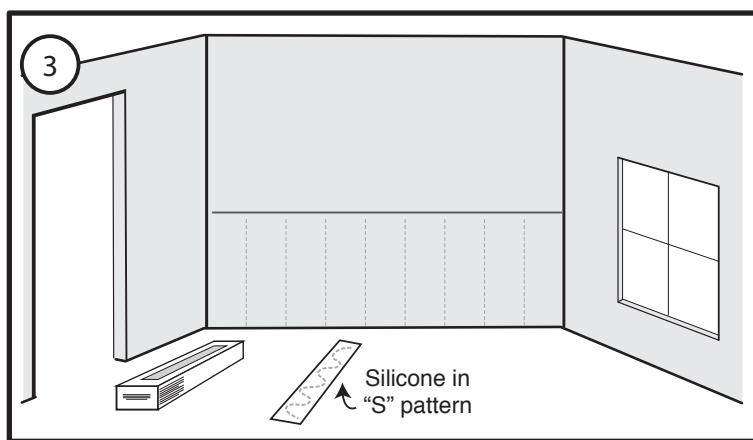
Apply silicone adhesive to the back side of the plank in an “S” pattern. If you’re using a locking engineered hardwood plank with an attached pad, apply the silicone directly to the pad on the back of the plank. (Figure 3)

Adhere the plank to the wall leaving a $\frac{3}{16}$ " gap (A) from the corners of the wall and a 1" gap (B) at bottom. Drive brad nails $\frac{1}{2}$ " from the top and bottom of each plank to secure to wall. Place nails where the trim will cover.

Continue with the installation for each subsequent plank by first applying silicone adhesive to the back side of the plank in an “S” pattern. Then angle the groove over the tongue of the previous plank and wiggle into place. Tighten joints as needed with a tapping block or pull bar. Finally, drive brad nails $\frac{1}{2}$ " from the top and bottom of each plank to secure to wall. Place nails where the trim will cover. Be sure to drive the brad nails into a stud whenever possible. (Figure 4)

Finish wainscot accent to ending wall. (Figure 5)

Install trim (chair rail) over the top edge. Install quarter round in the corners. Finish by installing the baseboard of your choice. (Figure 6)



Care and Cleaning

Dry wipe as primary cleaning method. **NO damp or wet washing.** If needed, lightly spray hardwood floor cleaner on a terry cloth or microfiber before wiping. **DO NOT** use abrasive cleaners, detergents, soaps, waxes or polishes. **DO NOT allow moisture to remain on the product surface.** Wipe off spills immediately.

DO NOT attach objects such as pictures, shelves or television mounts directly to the locking engineered hardwood wall. **DO NOT** apply adhesive backed hooks or install screws or nails into the locking engineered hardwood wall for hanging objects. Instead, drill clearance holes through the locking engineered hardwood and mount these objects directly to wall studs with screws or nails. Drill the clearance holes through the locking engineered hardwood at least 1/2" larger than the diameter of the fastener that will be used.

Precautionary Measures

Power tools should be equipped with a dust collector. If high dust levels are encountered use an appropriate NIOSH designated dust mask. Avoid dust contact with skin and eyes. First Aid Measures in case of irritations: In case of irritation flush eyes and skin with water for at least 15 minutes.

ATTN: Installers — Caution: Wood Dust

Sawing, sanding and machining wood products can produce wood dust. Airborne wood dust causes respiratory, skin and eye irritation. The International Agency for Research on Cancer (IARC) has classified wood dust as a nasal carcinogen in humans.

IMPORTANT HEALTH NOTICE FOR MINNESOTA RESIDENTS ONLY:

THESE BUILDING MATERIALS EMIT FORMALDEHYDE. EYE, NOSE, AND THROAT IRRITATION, HEADACHE, NAUSEA AND A VARIETY OF ASTHMA-LIKE SYMPTOMS, INCLUDING SHORTNESS OF BREATH, HAVE BEEN REPORTED AS A RESULT OF FORMALDEHYDE EXPOSURE. ELDERLY PERSONS AND YOUNG CHILDREN, AS WELL AS ANYONE WITH A HISTORY OF ASTHMA, ALLERGIES, OR LUNG PROBLEMS, MAY BE AT GREATER RISK. RESEARCH IS CONTINUING ON THE POSSIBLE LONG-TERM EFFECTS OF EXPOSURE TO FORMALDEHYDE. REDUCED VENTILATION MAY ALLOW FORMALDEHYDE AND OTHER CONTAMINANTS TO ACCUMULATE IN THE INDOOR AIR. HIGH INDOOR TEMPERATURES AND HUMIDITY RAISE FORMALDEHYDE LEVELS. WHEN A HOME IS TO BE LOCATED IN AREAS SUBJECT TO EXTREME SUMMER TEMPERATURES, AN AIR-CONDITIONING SYSTEM CAN BE USED TO CONTROL INDOOR TEMPERATURE LEVELS. OTHER MEANS OF CONTROLLED MECHANICAL VENTILATION CAN BE USED TO REDUCE LEVELS OF FORMALDEHYDE AND OTHER INDOOR AIR CONTAMINANTS. IF YOU HAVE ANY QUESTIONS REGARDING THE HEALTH EFFECTS OF FORMALDEHYDE, CONSULT YOUR DOCTOR OR CALL LOCAL HEALTH DEPARTMENT.

Style Selections Limited Residential Warranty

Mohawk provides the following lifetime residential warranty to the original purchaser for as long as he or she owns the product. This warranty applies to the first owner and the first installation of the product and may not be transferred. The “first owner” is the person stated as the buyer on the purchase document(s). This warranty applies only to first quality Style Selections brand locking engineered hardwood purchases made after the edition date of this warranty. The limited warranty does not cover any damage that occurs during shipment or installation.

Manufacturing Defects

Mohawk hereby warrants to the original owner (“Buyer”) their Style Selections locking engineered hardwood product will be free from manufacturing defects for as long as Buyer owns the product. Hardwood is a natural product and may have naturally occurring variations in grain and color, mineral streaks and knots. The owner/installer of a Style Selections hardwood product must use reasonable selectivity and hold out or cut off objectionable naturally occurring blemishes prior to installation.

Finish Warranty

Under normal use conditions, Mohawk hereby warrants to the original owner (“Buyer”), the factory applied finish of their Style Selections hardwood product will not wear through or will not lack finish adhesion for 25 Years. Diminished gloss is not considered wear through of the finish. In the event the finish wears through or releases from the Style Selections hardwood product, Mohawk will, at its option, repair or replace the affected planks or area, prorated over the remaining life of the warranty. This warranty is conditioned upon Lowe’s receipt of notice in writing from the Buyer and Mohawk’s receipt of notice in writing from Lowe’s of the alleged defect prior to expiration of the limited warranty period and evidence that the Style Selections hardwood floor is not subject to any of the limitations described below.

Structure Warranty

Under normal use conditions, Mohawk hereby warrants to the original Buyer of the Style Selections hardwood product that the plies will not separate for as long as the Buyer owns the home. Mohawk will, at its option, repair or replace any defective planks at no cost to the Buyer.

Jobsite Conditions

Mohawk requires that all Style Selections hardwood products be acclimated before installation. The purpose of acclimation is to allow the moisture content of the hardwood product to adjust to “normal living conditions” at the site. These are the temperature and humidity conditions that will typically be experienced once the structure is occupied. The room temperature must be within a range of 60-80 degrees Fahrenheit, with a relative humidity between 35% and 55%. These environmental conditions are specified as pre-installation requirements and should be maintained for the life of the product. Environmental conditions consistently outside of these parameters could result in product performance problems that would not be covered under this warranty.

Mohawk’s Responsibility:

In the event Mohawk determines one or more of the above warranty conditions apply to a claim by the original Buyer, the Buyer’s exclusive remedy and Mohawk’s sole liability on any claim, whether in tort, contract, or breach of warranty, shall be limited to either (1) the repair or replacement of the defective Style Selections hardwood product material only for the affected areas only, or (2) the refund of the applicable purchase price. Labor costs for removal and/or installation or repair associated with a warranty claim are not covered. MOHAWK HEREBY DISCLAIMS ALL OTHER WARRANTIES WHATSOEVER, EXPRESSED OR IMPLIED, INCLUDING ANY WARRANTY OF MERCHANTABILITY OR FITNESS FOR A PARTICULAR PURPOSE. IN NO EVENT SHALL MOHAWK HAVE ANY OTHER LIABILITY OR ANY MONETARY LIABILITY TO THE BUYER IN EXCESS OF THE PURCHASE PRICE OF THE STYLE SELECTIONS HARDWOOD PRODUCT. MOHAWK EXPRESSLY EXCLUDES AND SHALL NOT BE RESPONSIBLE FOR INCIDENTAL OR CONSEQUENTIAL DAMAGES OF ANY KIND. If Mohawk shall elect to repair or replace any defective Style Selections hardwood product, then Mohawk will supply a new Style Selections hardwood product of the same color and grade, if available. If such Style Selections hardwood product is not available or discontinued, Mohawk reserves the right to supply a hardwood product of similar value and appearance.

This Limited Lifetime Residential Warranty is pro rata. A pro rata warranty is one that provides a refund or credit and decreases according to a set formula as the warranty period progresses. The original warranty value is reduced by the amount of time that you own it. When a claim is made, the value of the warranty becomes a percentage of ownership per year based upon the warranty period. All Limited Lifetime Residential Warranties are prorated over 33 years. Any services that are provided as part of this warranty do not extend the warranty period. This limited residential warranty does not apply to Cabin grade or other downgraded or discontinued Style Selections hardwood products and any such product(s) that are sold “as is”. Any and all representations, promises, warranties or statements by Mohawk or its agents that differs in this manner from the terms of this limited warranty shall be of no force or effect unless in writing and signed by a duly authorized officer of Mohawk. If there is a conflict between these general terms and conditions and the terms and conditions of the warranties as specified, the terms and conditions of the warranties specified shall control.

The Style Selections Limited Residential Warranty is made subject to the following conditions:

1. These limited warranties apply to wall installations only. They do not apply to floor installations.
2. Other horizontal uses of this product are not covered by these limited warranties. Never install this product on a ceiling or as a countertop.
3. These warranties do not apply to any product installed in a commercial application.

Any of the following shall void and invalidate the above limited warranty.

Visible Defects — Boards with visible defects must not be installed. Visible defects are those defects which are apparent on the face of the product. Boards with visible defects must be noted by the installer/buyer and reported before installation so that replacement product can be furnished prior to installation.

Building Settling or Uneven Walls—Building settling or uneven walls are considered to be part of the pre-installation inspection process. Do not install Style Selections hardwood if these situations exist. This Style Selections limited warranty does not cover damage or defects caused by settling or uneven walls.

Improper Installation — Style Selections hardwood must be installed in strict accordance with the written installation instructions. Improper installation, done in a way that is contrary to the Style Selections written installation instructions, can cause problems with Style Selections hardwood products. This Style Selections limited warranty does not cover damage or defects caused by improper installation.

Improper Maintenance or Inadequate Care — Style Selections hardwood requires proper maintenance. Style Selections hardwood products must be maintained in accordance with the written maintenance instructions. This Style Selections limited warranty does not cover damage or defects caused by improper maintenance or inadequate care.

Refinishing — The factory finish of your Style Selections hardwood product may be refinished. However, refinishing the flooring will void the Finish Warranty. Accidents, Abuse or Abnormal Wear—Style Selections does not warrant against damage or defects resulting from accidents, abuses or abnormal usage which stain or scratch the finish, diminish gloss or indent the surface of the Style Selections hardwood product.

Problems with Moisture or Dryness — This Style Selections limited warranty does not cover damage or defects caused by wetting, presence of excessive moisture or by conditions which are too dry. Floods, acts of God, plumbing accidents, leaking appliances or pet urine are not covered by this warranty.

Excessive Lighting — This Style Selections limited warranty does not cover damage or defects, including, but not limited to color changes caused by excessive sunlight or intense lighting. Excessive sunlight or intense lighting can cause color changes in the finished product. Window treatments will usually provide adequate protection against excessive sunlight or intense lighting. Additionally, due to the effects of excessive sunlight or intense lighting, new and/or replacement Style Selections hardwood product may not match display samples and/or existing product.

Difference from Samples — This Style Selections limited warranty does not cover visual differences between color samples and the color of the installed product. Please approve your product's color prior to installation.

Transferability — This Style Selections limited warranty is applicable to the original owner only and to the Style Selections hardwood product used in the original installation. The warranty is non-transferable.

Your Obligation to Mohawk — As the Buyer of our Style Selections hardwood floor, you agree to follow all installation, care and maintenance directions as related to the Style Selections hardwood floor. You also agree to allow Mohawk an opportunity to repair any claimed defects. Mohawk must be given the opportunity to inspect the flooring installation prior to any removal or repair that will be submitted for warranty coverage. The original proof of purchase must be supplied along with a warranty claim submission.

For service under this warranty please contact your local Lowe's store. Describe the problem and in many cases, they can provide you with a solution.

For installation, maintenance and technical questions please call (877) 888-8225.

Style Selections locking engineered hardwood flooring is manufactured by
Unilin Flooring North America LLC
550 Cloniger Drive
Thomasville, NC 27360

Warranty Version June 2018