

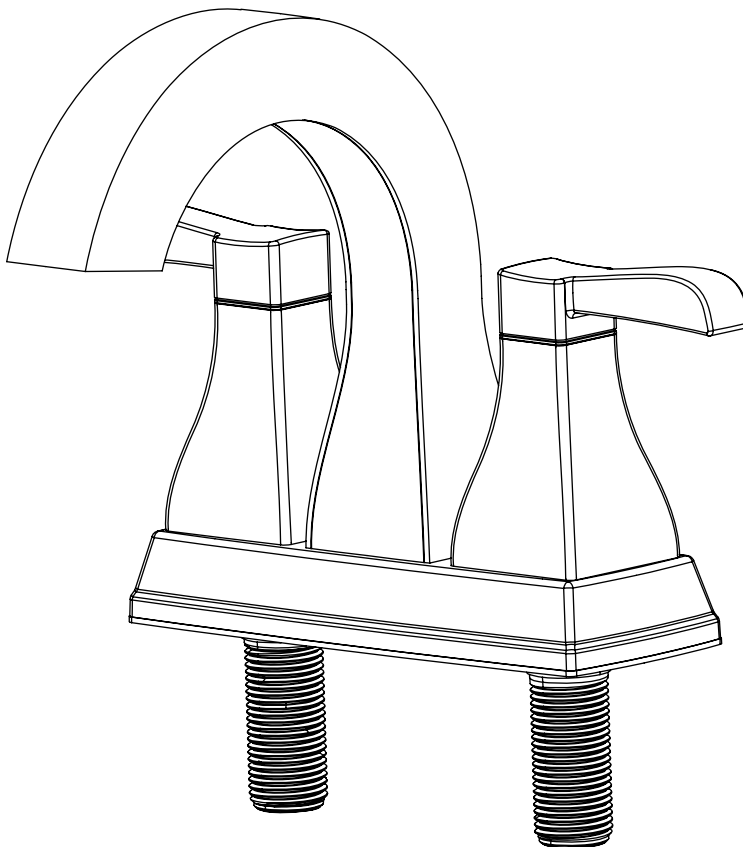
allen + rothTM

Brand Name® is a registered trademark
of LF, LLC. All Rights Reserved.

Centerset Bath Faucet

MODEL # 3809989
3809990
3809991

Español p. 9



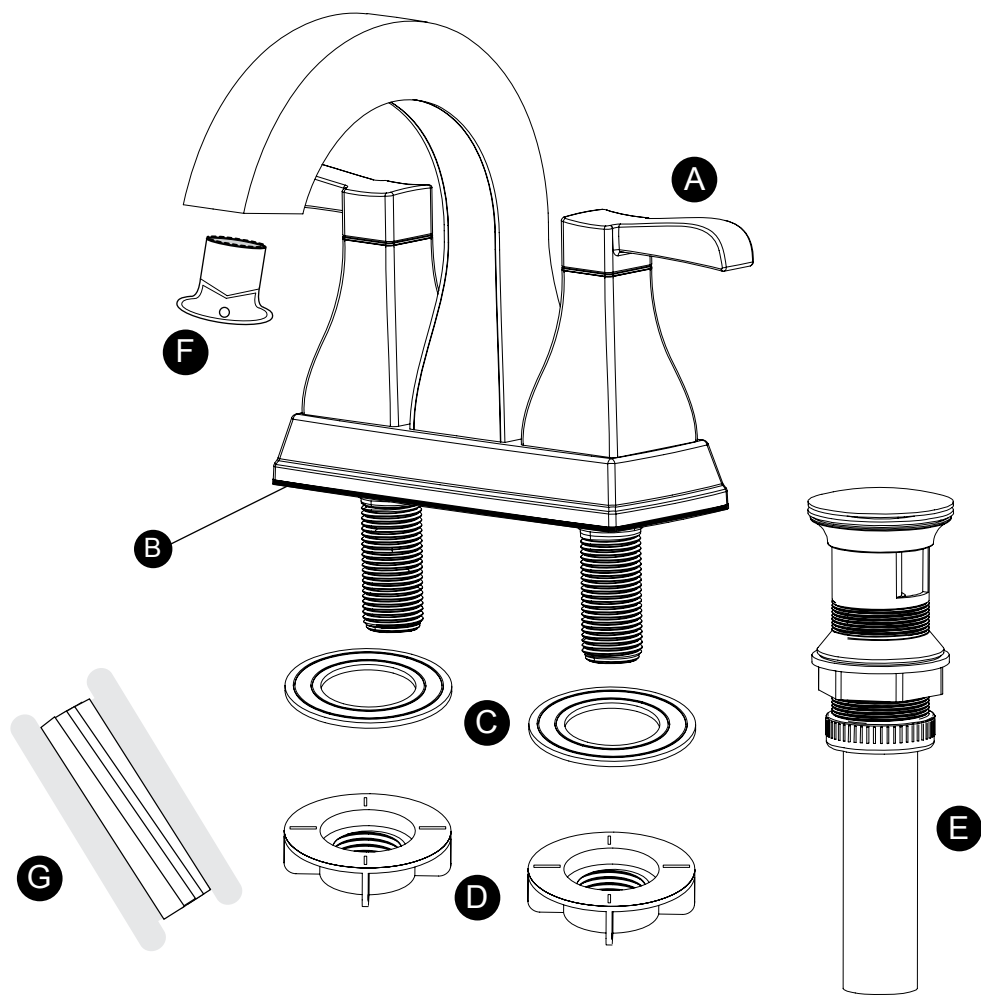
ATTACH YOUR RECEIPT HERE

Model Number _____ Purchase Date _____



Questions, problems, missing parts? Before returning to your retailer, call our customer service department at 1-866-439-9800, 8 a.m. - 8 p.m., EST, Monday - Sunday.

PACKAGE CONTENTS



PART	DESCRIPTION	QUANTITY
A	Faucet	1
B	Gasket	1
C	Washers	2
D	Install nuts	2
E	Drain assembly	1
F	Aerator removal tool	1
G	Plumber's tape	1

SAFETY INFORMATION

Please read and understand this entire manual before attempting to assemble, operate or install the product.

WARNING

- Follow the installation instructions carefully. Proper installation is the installer's responsibility.
- Failure to follow correct installation procedures can result in the faucet being loose, which can result in serious injury.

CAUTION

- Check local building codes before you begin installation to ensure compliance.

PREPARATION

Before beginning assembly of product, make sure all parts are present. Compare parts with package contents list and hardware contents list. If any part is missing or damaged, do not attempt to assemble the product. Contact customer service for replacement parts.

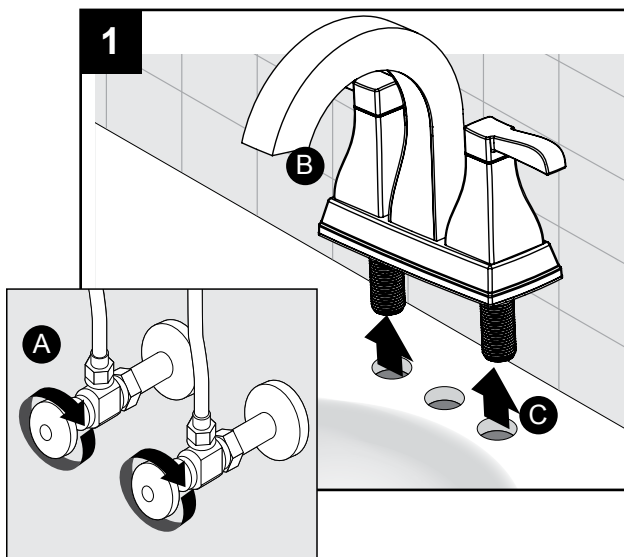
Estimated Assembly Time: 35 minutes (including removal of old faucet)

Tools Required for Assembly (not included): Adjustable Wrench, Silicone Sealant

Helpful Tools (not included): Safety Goggles

ASSEMBLY INSTRUCTIONS

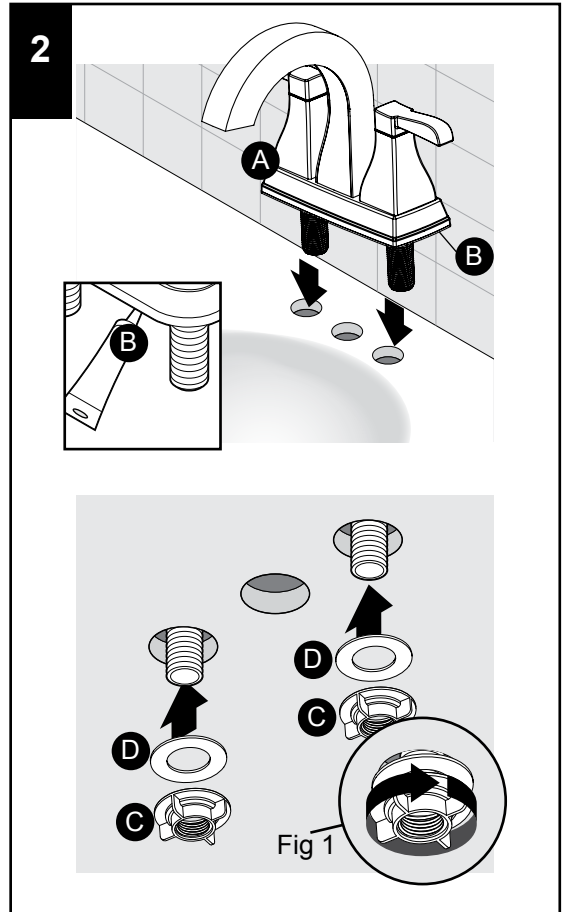
1. Shut off the water supply (A). Remove the old faucet (B). Clean the mounting surface (C).



FAUCET ASSEMBLY INSTRUCTIONS

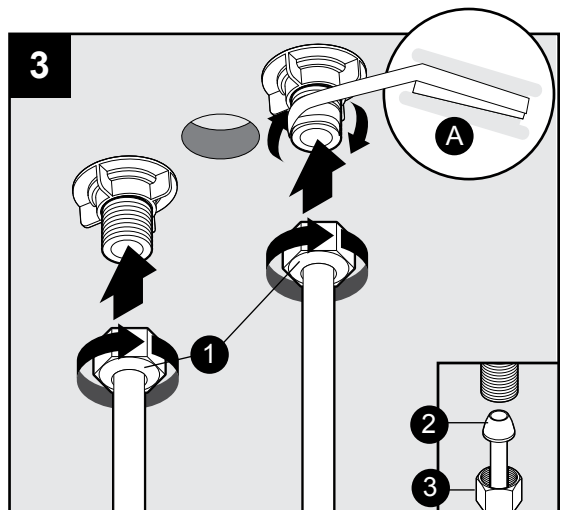
2. Ensure the gasket (B) is on the bottom of the new faucet (A). Place the faucet (A) through the mounting holes in the sink. Secure the faucet assembly (A) to the sink with the install nuts (C) and washers (D) provided. Screw the install nuts (C) and (D) washers to sink and hand-turn to tighten, as shown in the Fig 1.

NOTE: If the sink is uneven, use silicone sealant (not included) under the gasket (B).



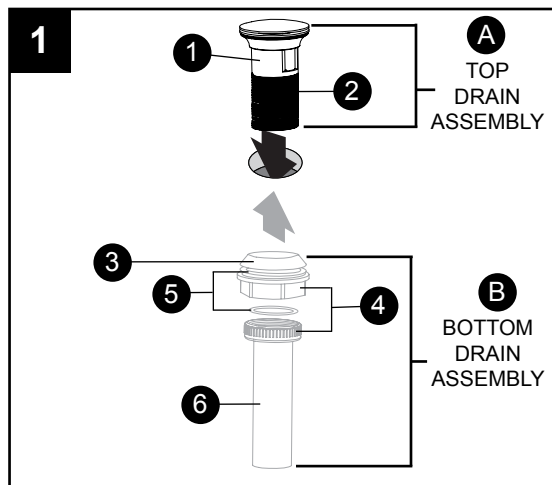
3. Make connections to water lines. Use 1/2" I.P.S. Faucet connections (1) or use supply line coupling nuts (2) with 3/8" O.D. ball-nose riser (3) (not included). Use wrenches to tighten connections (not included). Do not overtighten.

NOTE: For this step plumber's tape (A) may be needed to seal and lubricate the threaded pipe joints. If needed, take a small strip of plumber's tape and wrap it clockwise around the threads of the water line before tightening the connections.

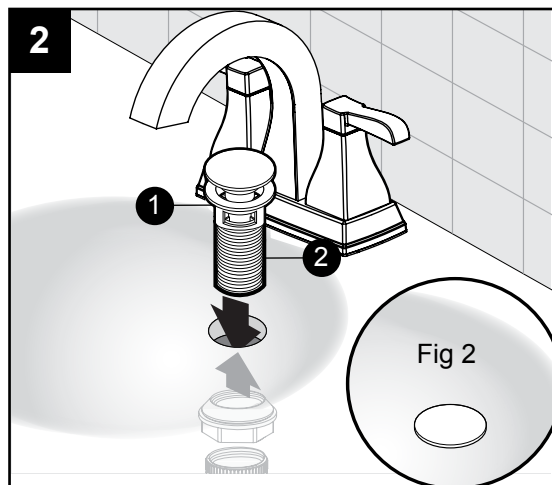


POP-UP DRAIN INSTRUCTIONS

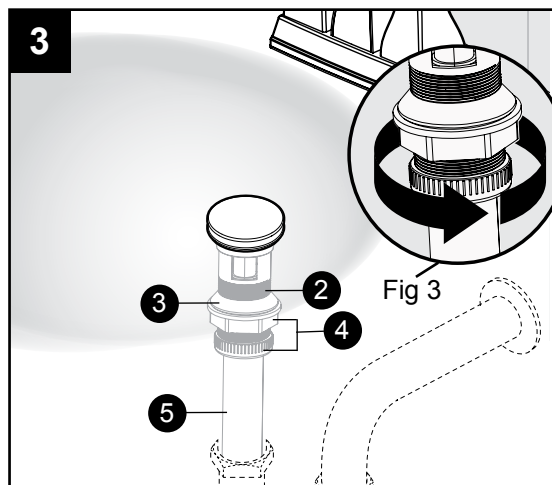
1. For installing the Drain Assembly unit remove the bottom drain assembly (B): which includes gasket (3), nuts (4), washers (5) and bottom pop-up body (6) from the top drain assembly (A): which includes top gasket (1) and pop-up body (2).



2. For the top drain assembly insert the top pop-up body (2) into the sink. Ensure that the top gasket (1) rests securely between the top of the sink and the top of the pop-up body (2) as shown in the Fig 2.



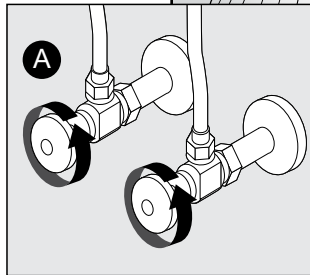
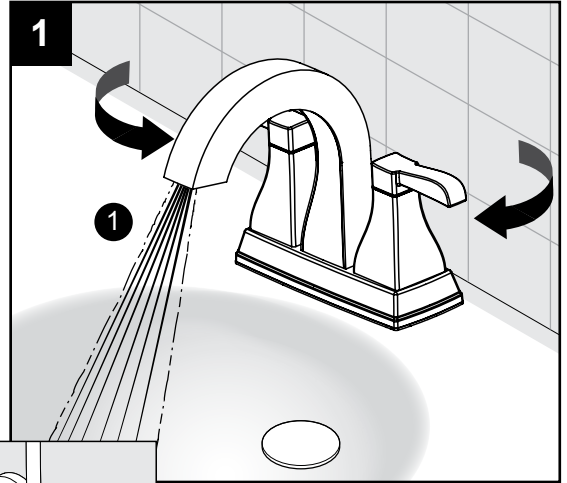
3. From underneath the sink for the bottom drain assembly, screw the bottom gasket (3), nuts and washers (4) and bottom pop-up body (5) onto the top pop-up body (2) by twisting clockwise until secure as shown in the Fig 3.



OPERATION INSTRUCTIONS

1. Flushing and checking for leaks:

Important: After installation is complete, remove the aerator (1) from the faucet with the included aerator tool to flush the water lines. Turn on the water supply (A) and allow both hot and cold water to run for at least one minute each. This flushes away any debris that could cause damage to internal parts. While the water is running, check for leaks. Turn off the water and replace the aerator.



CARE AND MAINTENANCE

- Clean carefully by gently wiping with a grit-free damp cloth.
- Use only mild soap with water.
- Never use acids, harsh chemicals or abrasive detergents to clean the faucet surface.

TROUBLESHOOTING

PROBLEM	POSSIBLE CAUSE	CORRECTIVE ACTION
There are leaks underneath the handle.	One of the Supply Lines has come loose or was not properly tightened.	<ol style="list-style-type: none">1. Retape connection using supplied Plumber's Tape.2. Reconnect Supply Lines being sure to not over-tighten.
The Aerator leaks or has an inconsistent water flow pattern.	The Aerator is dirty or misfitted.	<ol style="list-style-type: none">1. Remove the Aerator and check for debris in the aerator screens.2. Ensure the Aerator is properly re-installed.
There is leaking from the sink drain at the base of the sink. The sink has a rough or irregular surface	The sink has a rough or irregular surface.	<ol style="list-style-type: none">1. Apply a thin line silicone sealant to the beveled side of the Upper Gasket from the Lower Drain Assembly.2. Re-tighten and test for leaks.

WARRANTY

This faucet has been manufactured under the highest standard of workmanship. All parts of this faucet are warranted to be free from leaks or drips during domestic use for one year from purchase date or as long as the original purchaser owns this product, whichever comes first. The manufacturer will replace **FREE OF CHARGE**, under the warranty conditions the entire unit or any part (at our option) which proves defective in material and/or workmanship under normal installation, use and service. This warranty is limited to defective parts as stated. All costs of removal and installation of the faucet, including the replacement of warranty parts are the responsibility of the purchaser. The manufacturer shall not be liable for incidental, consequential or special damages arising at or in connection with product use or performance except as may otherwise be accorded by law. This warranty gives you specific legal rights, and you may also have other rights which may vary from state to state. Any damage to this faucet as a result of misuse, abuse, neglect, accident, improper installation, or any use violating instructions furnished by us, **WILL VOID THIS WARRANTY**. When requesting warranty service, you will need to present a copy of your sales receipt as proof of purchase. To obtain warranty service, call our customer service department at 1-866-439-9800.

REPLACEMENT PARTS LIST

For replacement parts, call our customer service department at 1-866-439-9800, 8 a.m. - 8 p.m., EST, Monday - Sunday.

PART	DESCRIPTION	PART #
1	Handle	RP
2	Set screw	RP50002
3	Screw	RP50181
4	Inverter	RP70677
5	Bonnet nut	RP70678
6	Washer	RP64256
7	Cartridge H	RP20115
8	Cartridge C	RP20116
9	Gasket	RP80729
10	Aerator	RP30187
11	Easy install nut	RP56095
12	Pop-up assembly	RP40269

