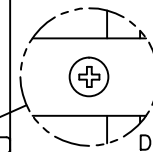
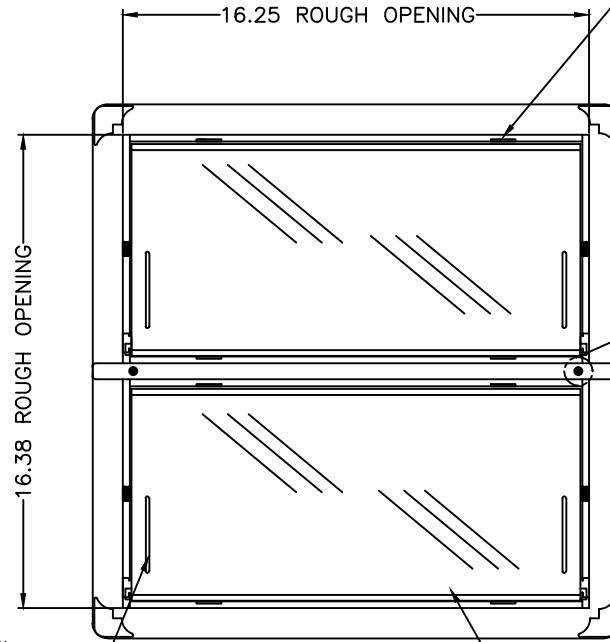


DETAIL DIAGRAM  
MODEL 1540-521  
FLOOD VENT INSULATED

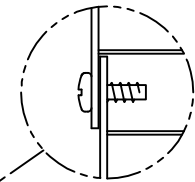
HURRIBOND GRIP & SEAL  
ADHESIVE LOCATION  
(FLANGE)

HURRIBOND GRIP & SEAL  
ADHESIVE LOCATION  
(FLANGE)

CLIP SLOTS USE TWO TOP



DETAIL "C"



DETAIL "A"

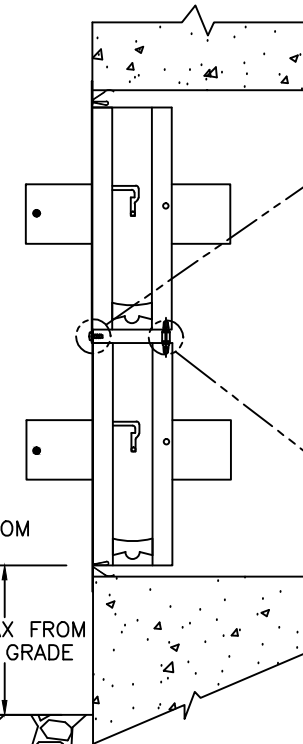
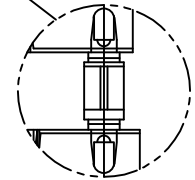


FIGURE 3  
SIDE VIEW



DETAIL "B"  
SNAP-IN NYLON  
1/2 INCH STANDOFF

VENT  
DOOR

CLIPS INSTALLED:  
TWO ON TOP  
TWO ON BOTTOM

VENT  
FRAME

FLOAT SLOTS

CLIPS SLOTS USE TWO BOTTOM

12" MAX FROM  
FINAL GRADE

FIGURE 2  
SIDE VIEW

FIGURE 1  
FRONT VIEW



**SMART VENT®**  
877-441-8368  
WWW.SMARTVENT.COM

SMART VENT FOUNDATION FLOOD VENTS  
430 ANDBRO DR., UNIT 1  
PITMAN NJ 08071

FLOOD VENT  
INSULATED  
MODEL 1540-521

THE INFORMATION CONTAINED IN THIS DRAWING  
IS THE SOLE PROPERTY OF SMART VENT INC.  
ANY REPRODUCTION OR USE OF THIS INFORMATION  
WITHOUT THE WRITTEN PERMISSION OF SMARTVENT INC  
IS PROHIBITED.

SIZE A	DWG NO. 1540-521	REV A
DATE. 6-21-16	SHEET 1 OF 2	



Smart VENT  
877- 441- 8368  
www.smartvent.com

INSTALLATION INSTRUCTIONS  
& DETAILS  
MODEL 1540-521  
FLOOD VENT INSULATED

REV. 6-21-16

INSTALLATION INSTRUCTIONS

1. PREPARE A CLEAN 16-1/4" WIDE X 16-3/8" HIGH ROUGH OPENING FOR EACH SET OF STACKING VENTS (1 BLOCK WIDE X 2 BLOCKS HIGH) WITH THE BOTTOM OF THE HOLE NO MORE THAN 12" ABOVE FINISHED GRADE.
2. REMOVE DOORS FROM FRAMES. (TURN UPSIDE DOWN, ROTATE BOTTOM OF DOOR OUTWARD AND SLIDE OUT OF SLOTS).
3. ASSEMBLE TWO FRAMES TOGETHER USING TWO NYLON SPACERS SNAPPED INTO HOLES IN REAR OF FRAMES AS SHOWN IN DETAIL "B". PLACE TOP FRAME (ONE WITH SHORT BOTTOM FLANGE) OVER AND IN FRONT OF BOTTOM FRAME (ONE WITH SHORT TOP FLANGE) AND FASTEN FRONT OF FRAMES TOGETHER WITH TWO SELF TAPPING SCREWS AS SHOWN IN DETAILS "A" AND "C". DO NOT OVER TIGHTEN SCREWS.
4. INSERT INSTALLATION CLIPS INTO THE TWO SLOTS ON THE TOP OF THE FRAME ASSEMBLY AND INTO THE TWO SLOTS ON THE BOTTOM OF THE FRAME ASSEMBLY.
5. HURRIBOND GRIP & SEAL OR EQUIVALENT ADHESIVE IS APPLIED TO BACK OF FLANGES FOR A BETTER SEAL TO WALL FACE. PLACE FRAME ASSEMBLY INTO WALL OPENING BY COMPRESSING THE BOTTOM TWO CLIPS AND SLIPPING THE FRAME INTO THE OPENING. ENSURE THE BOTTOM CLIPS ARE IN THE OPENING BEFORE ALLOW THEM TO DECOMPRESS. NEXT COMPRESS THE TOP SPRINGS AND PUSH THE VENT FRAME INTO THE OPENING COMPLETELY. PRESS FLANGES TIGHT TO WALL FACE.
6. MAKE SURE BOTH FRAMES ARE FLUSH TO WALL FACE, SECURE, SQUARE, LEVEL AND ALL SLOTS ARE CLEAR OF DEBRIS, MORTAR AND CAULK.
7. HOLD DOORS FROM THE BOTTOM, PARALLEL TO GROUND WITH BACK FACING GROUND AND RE-INSTALL INTO FRAMES BY INSERTING TOP FIRST AND LETTING METAL PINS FIND SLOTS. PUSH ALL THE WAY BACK AND ALLOW DOOR TO DROP AND ROTATE DOWN ON BOTH SIDES LATCHED CLOSED.
8. INSERT THE SECURITY CLIPS INTO THE SLOTS THE DOOR PINS SLID INTO.
9. TO OPEN THE DOOR, INSERT TWO CREDIT CARDS INTO THE FLOAT SLOTS. THIS WILL UNLATCH THE DOOR FOR REMOVAL AND CLEANING.

DETAILED SPECIFICATIONS:

MATERIAL: STAINLESS STEEL

OPERATION FLOOD: AUTOMATIC NON-POWERED ACTIVATION AND OPERATION  
VENT REMAINS CLOSED AND LOCKED UNTIL ACTIVATED

INSTALLATION:

SECURED W/ 4 STAINLESS STEEL INSTALLATION CLIPS SUPPLIED AND AN ADHESIVE  
HYDROSTATIC RELIEF: 200 SQ. FT PER VENT (400 SQ. FT. PER THIS 2 UP ASSEMBLY)

REQUIREMENTS FLOOD: MINIMUM OF 2 VENTS PER ENCLOSED AREA MOUNTED ON AT LEAST TWO DIFFERENT WALLS

COLORS: STAINLESS (STANDARD)  
EXTERIOR POWDER COATED WHITE, WHEAT, GRAY, AND BLACK (AVAILABLE)

MEETS THE REQUIREMENTS FOR ENGINEERED OPENINGS AS SET FORTH BY:  
FEMA, NFIP, ICC, & ASCE  
SUPPORTIVE DOCUMENTS, TB 1-08, 44CFR 60.3(C)(5), ASCE 24-14  
ICC EVALUATION # ESR-2074