

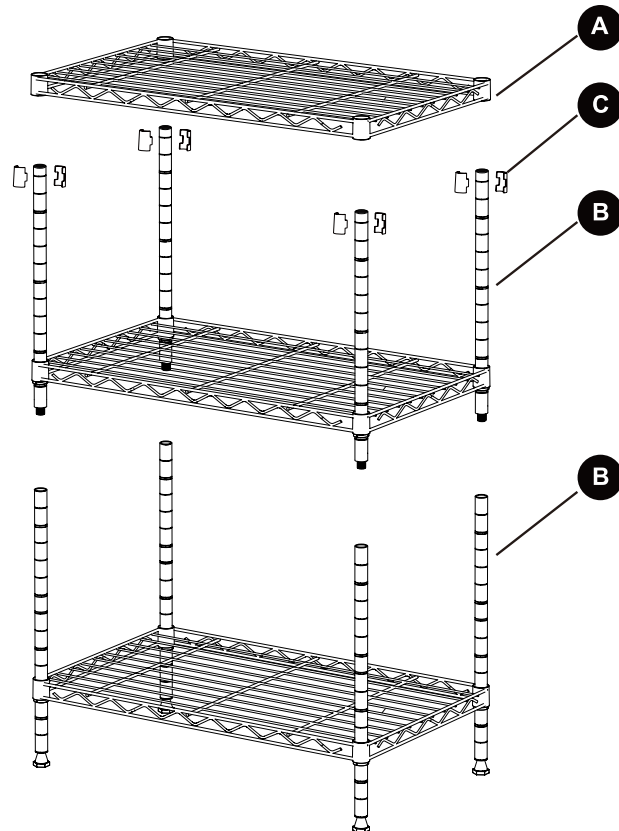
CARE AND MAINTENANCE

Never use abrasive or acid-based cleaners on the shelf rack.
Clean shelves and rods with a solution of mild detergent and water. Use a soft cloth or sponge to wipe parts. Rinse and dry thoroughly. Keep surfaces dry and clean for a longer lasting finish.


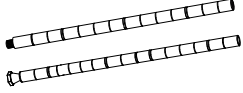

NOTICE

Please read and understand these instructions before attempting to assemble, operate or install the product.

- Two adults required for a safe assembly.
- Do not allow children to climb or play in or around the shelves.
- Assemble on a soft surface, such as carpeting to avoid scratching the finish.



Reference Photo

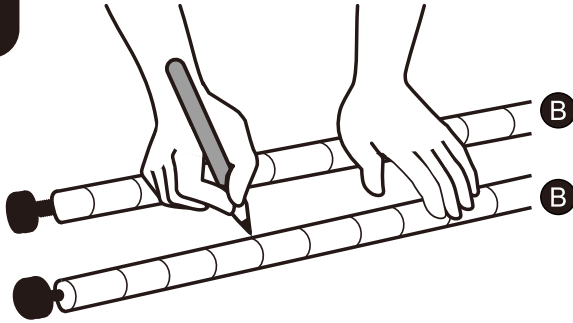
Part	Description	Picture
A	Shelves	
B	Poles	
C	Spacers	

PREPARATION

1. Before beginning assembly of product, make sure all parts are present. Compare parts with package contents list and hardware contents. If any part is missing or damaged, do not attempt to assemble the product.
2. Estimated Assembly Time: Approximately 15 - 25 minutes.
3. Helpful Tools (not included): Rubber Mallet.
4. Decide on the shelf location before beginning the assembly. Once the Product is assembled, it is very difficult to move a shelf without taking the entire assembly apart and starting over.
5. No Tools Required for Assembly.

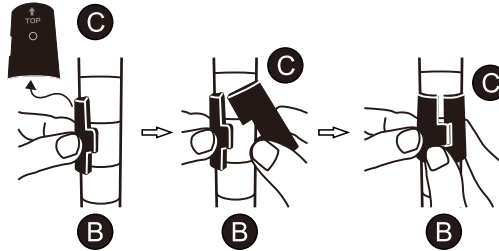
Assembly Instructions

1



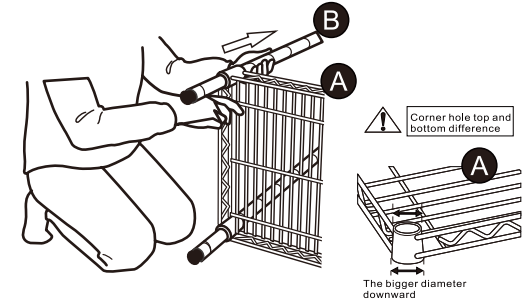
Use a pen to mark the height on the 4 Poles (B) with levels. Be sure all poles are marked in the same location.

2



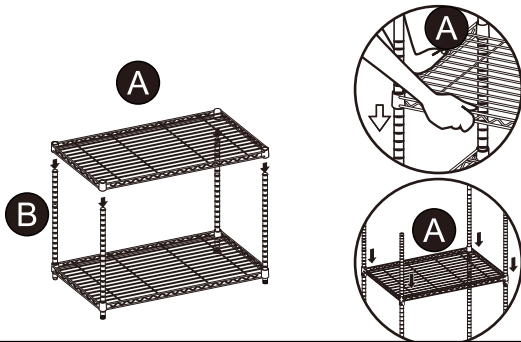
Attach 2 Spacers (C) at the pen marks on the 4 Poles (B). Keep the arrows on the spacers (C) pointed upwards.

3



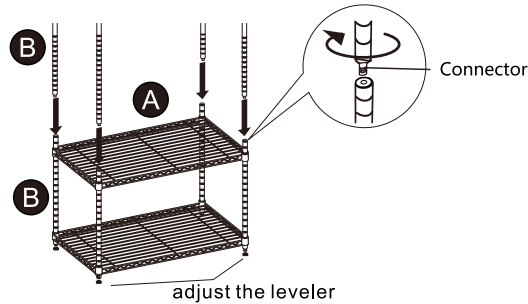
Place the Poles (B) with levels through the corner holes of 1 Shelf (A). Fit the shelf carefully and securely over the Spacers (C).

4



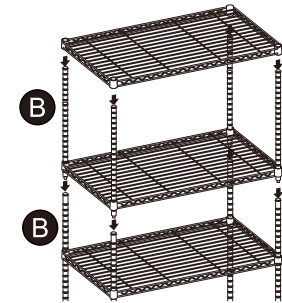
Install the second Shelf (A) following steps 2-3.

5



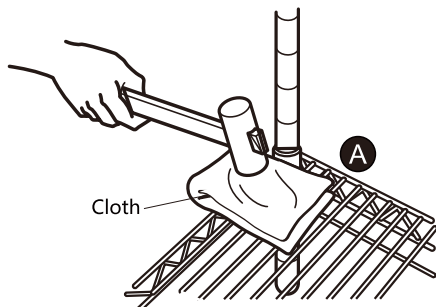
If it is 2-section or 3-section pole, screw the Pole (B) onto the threaded ends of the installed Poles (B). Be sure the connection is secure & tight.

6



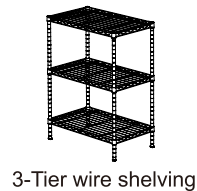
Install remaining Shelves (A) following steps 2-3.

7

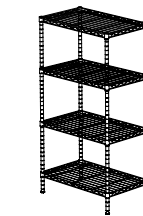


Use the rubber mallet to tap the shelves into place for a secure fit. Use a soft cloth between the shelf & mallet to prevent damage to the shelf.

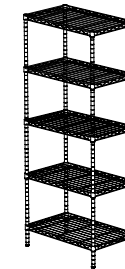
8



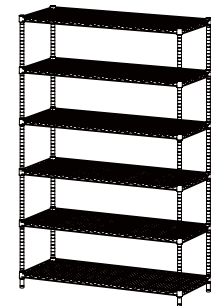
3-Tier wire shelving



4-Tier wire shelving



5-Tier wire shelving



6-Tier wire shelving

Assembly is Completed.
See the assembly photo with different tier shelves for your reference.