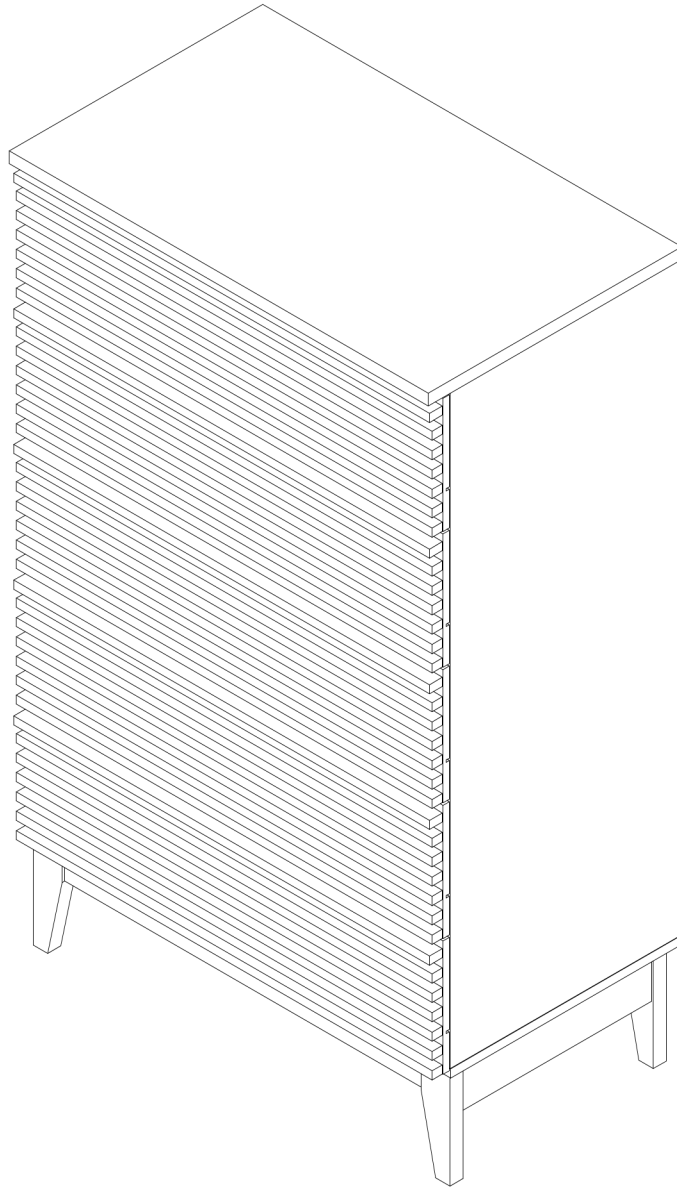


ASSEMBLY INSTRUCTIONS

MOD-6967-WAL

V1.01.07.21



Questions? Contact us!

609.256.9000 • cs@modway.com
www.modway.com

***modway**

Let's get started!

*modway



Read through all of the instructions before starting



Care instructions are listed in the last step of this manual



Approx. 60 minutes assembly time



Make sure you have all parts and components before discarding any packing materials



2 people recommended for assembly

Only use hand tools to assemble this item. Do not use power tools. Do not tighten bolts or screws completely until all hardware is lined up and inserted into the holes.

Do not over-tighten screws and bolts to avoid stripping the hardware or cracking the item.

Assemble your item on a flat, carpeted area, with plenty of space to work. This will prevent damage and scratches to your floors or the item while you're assembling the product.

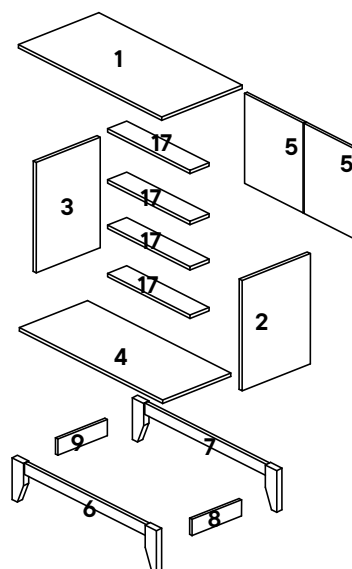
Keep all components and packaging out of reach of children or animals to avoid risk of choking or suffocation.

Furniture components:

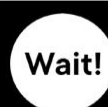
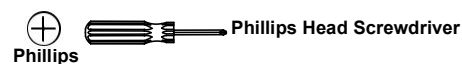
1	Top Panel	x1	10	Drawer Right	x5
2	Right Side Panel	x1	11	Drawer Left	x5
3	Left Side Panel	x1	12	Drawer Head	x5
4	Bottom Panel	x1	13	Drawer Base	x5
5	Back Panel	x2	14	Drawer Back	x5
6	Front Leg Panel	x1	15	Drawer Handle	x5
7	Back Leg Panel	x1	16	Drawer Support	x5
8	Right Leg Support	x1	17	Body Support	x5
9	Left Leg Support	x1			

Provided hardware:

A		JCBC M6 x 80mm	x4	J		Drawer Runner Right	x5
B		Wooden Dowel Ø6 x 30mm	x94	K		JCBC M6 X 60mm	x4
C		Cam Lock- Ø15 x 12mm	x24	L		Cam Lock- Ø12 x 9.9mm	x15
D		Cam Bolt- Ø6 x 32mm	x39	M		Anti-Tipping Kits	x1
E		Floor Glide-B321	x4	N		JCBCW M6 x 50mm	x4
F		C/board Screw Ø3.5 x 16mm	x74	O		C/board Screw Ø4 x 25mm	x15
G		C/board Runner Left	x5	P		C/board Screw Ø4 x 38mm	x15
H		C/board Runner Right	x5	Q		Allen Key	x1
I		Drawer Runner Left	x5	R		Wooden Dowel Ø6 x 25mm	x15



What you need:



Missing parts or hardware? Need assistance?

Contact us before returning your item. We're here to help!

609.256.9000 • cs@modway.com

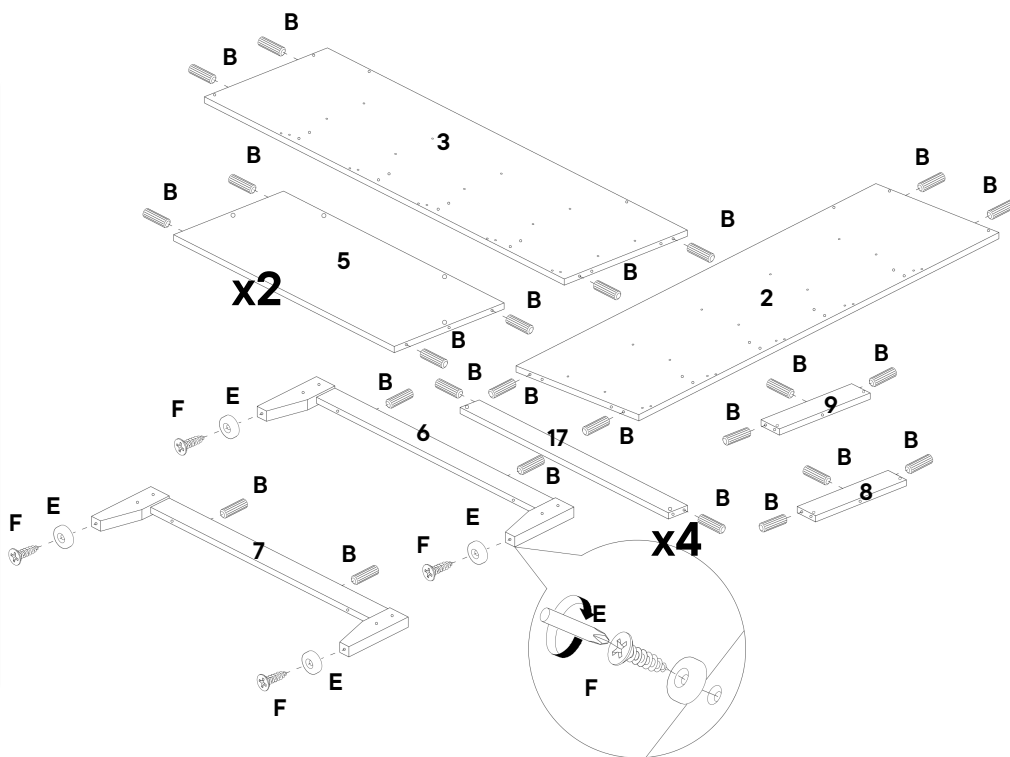
Step 1

HARDWARE

- B** Wooden Dowel Ø6 x 30mm x34
- E** Floor Glide-B321 x4
- F** C/board Screw Ø3.5 x 16mm x4

COMPONENTS

- 2** Right Side Panel x1
- 3** Left Side Panel x1
- 5** Back Panel x2
- 6** Front Leg Panel x1
- 7** Back Leg Panel x1
- 8** Right Leg Support x1
- 9** Left Leg Support x1
- 17** Body Support x4



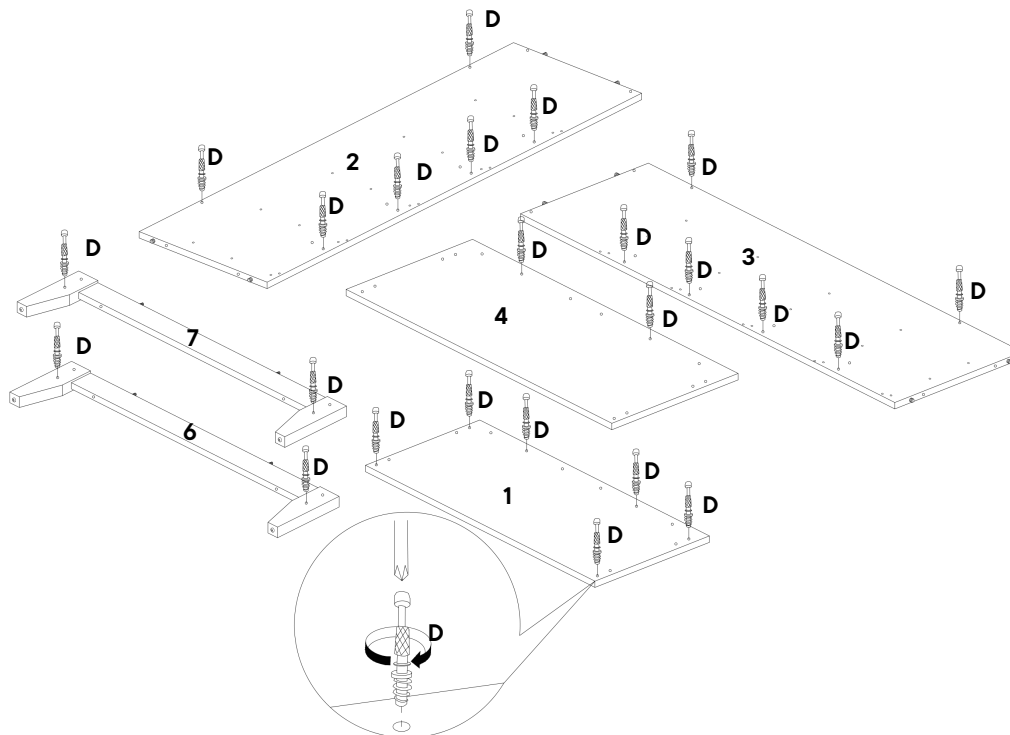
Step 2

HARDWARE

- D** Cam Bolt- Ø6 x 32mm x24

COMPONENTS

- 1** Top Panel x1
- 2** Right Side Panel x1
- 3** Left Side Panel x1
- 4** Bottom Panel x1
- 6** Front Leg Panel x1
- 7** Back Leg Panel x1



Step 3

HARDWARE

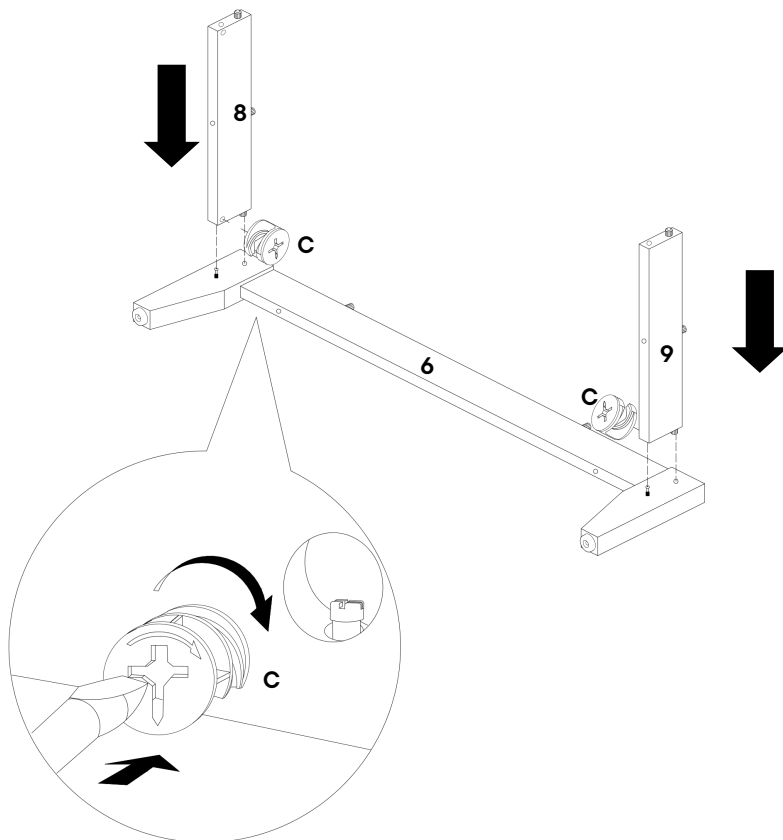
C Cam Lock- Ø15 x 12mm x2

COMPONENTS

6 Front Leg Panel x1

8 Right Leg Support x1

9 Left Leg Support x1



Step 4

HARDWARE

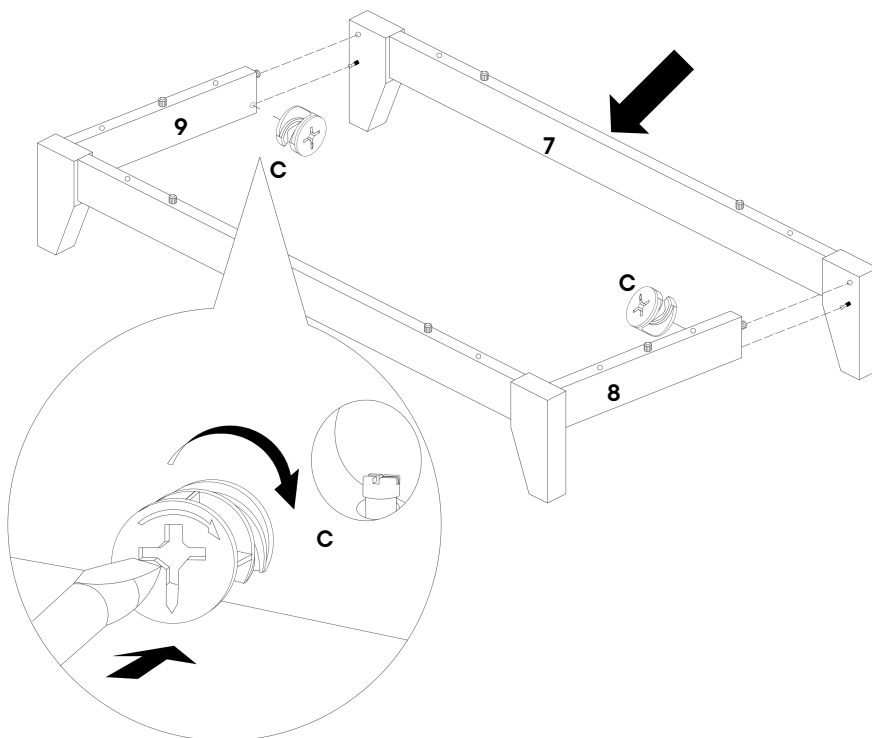
C Cam Lock- Ø15 x 12mm x2

COMPONENTS

7 Back Leg Panel x1

8 Right Leg Support x1

9 Left Leg Support x1



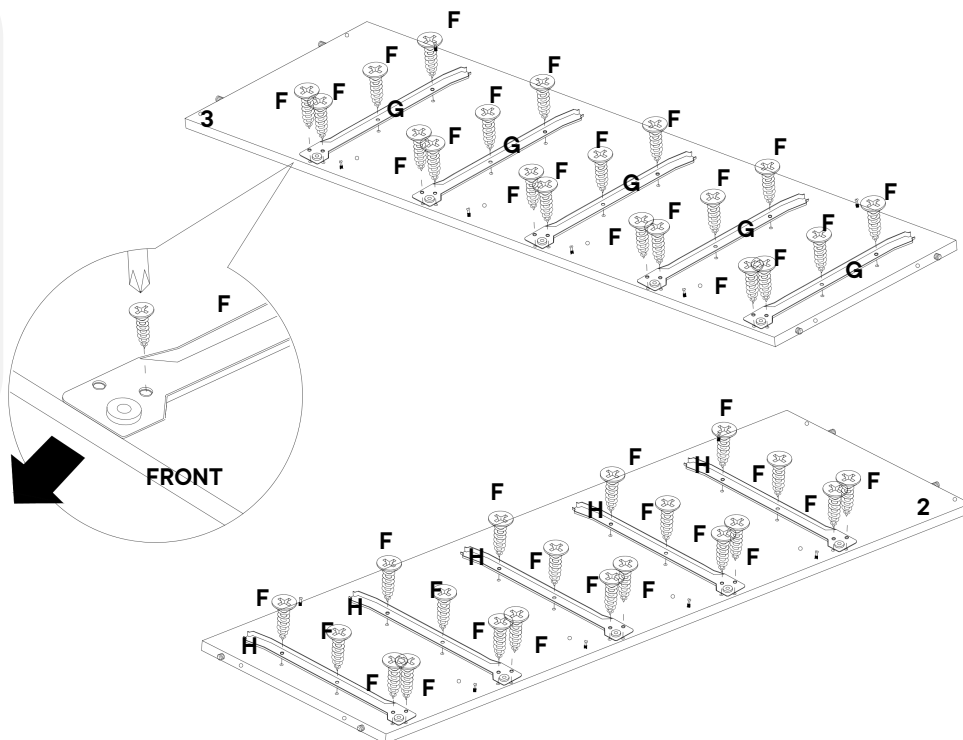
Step 5

HARDWARE

- F** C/board Screw $\varnothing 3.5 \times 16\text{mm} \times 40$
- G** C/board Runner Left x5
- H** C/board Runner Right x5

COMPONENTS

- 2** Right Side Panel x1
- 3** Left Side Panel x1



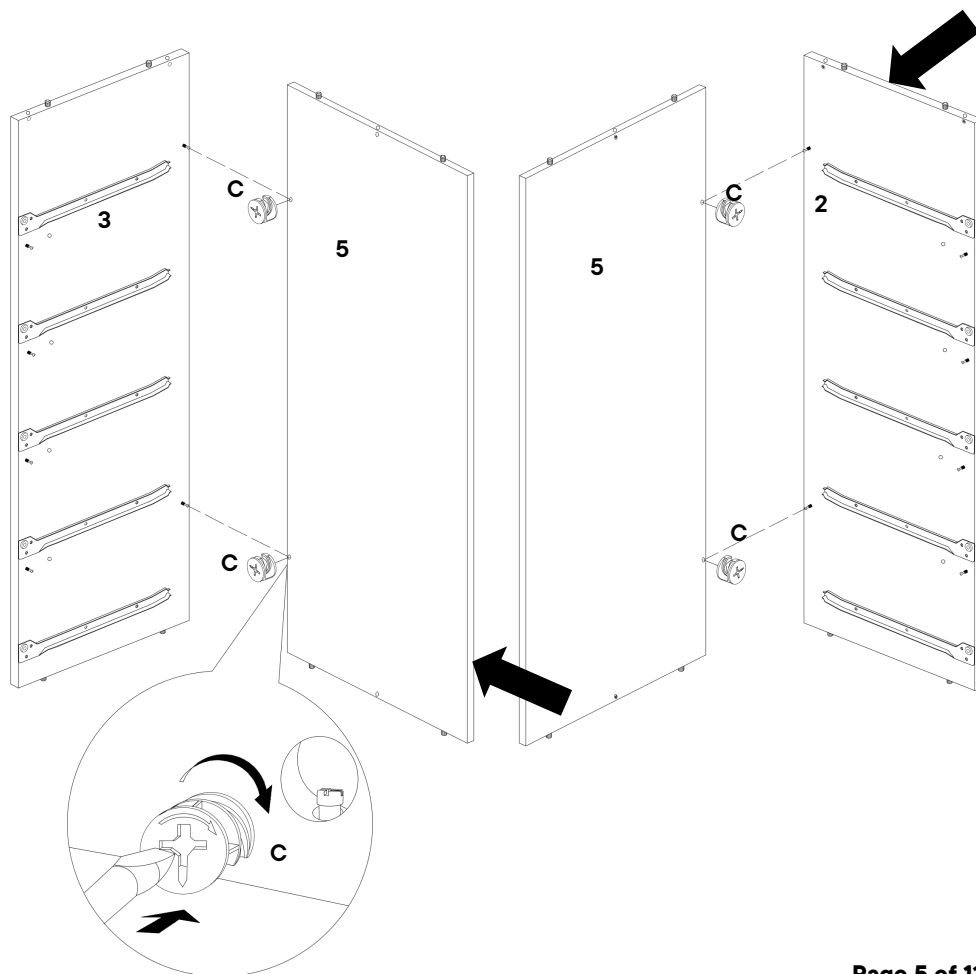
Step 6

HARDWARE

- C** Cam Lock- $\varnothing 15 \times 12\text{mm}$ x4

COMPONENTS

- 2** Right Side Panel x1
- 3** Left Side Panel x1
- 5** Back Panel x2



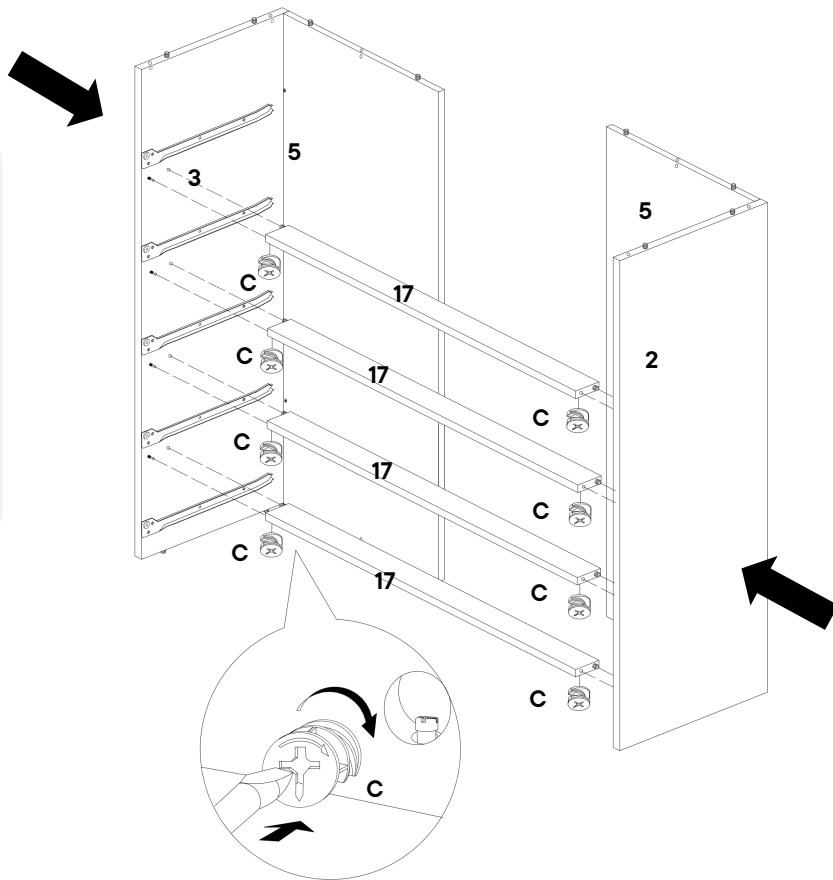
Step 7

HARDWARE

- C** Cam Lock- Ø15 x 12mm x8

COMPONENTS

- 2** Right Side Panel x1
- 3** Left Side Panel x1
- 5** Back Panel x2
- 17** Body Support x4



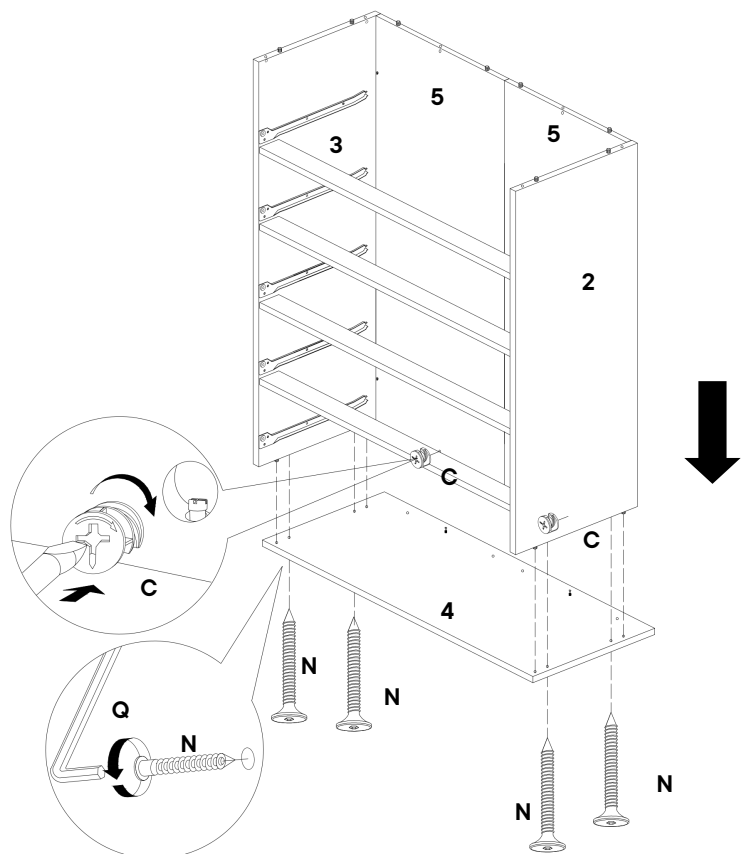
Step 8

HARDWARE

- C** Cam Lock- Ø15 x 12mm x2
- N** JCBCW M6 x 50mm x4
- Q** Allen Key x1

COMPONENTS

- 2** Right Side Panel x1
- 3** Left Side Panel x1
- 4** Bottom Panel x1
- 5** Back Panel x2



Step 9

HARDWARE

C Cam Lock- Ø15 x 12mm x6

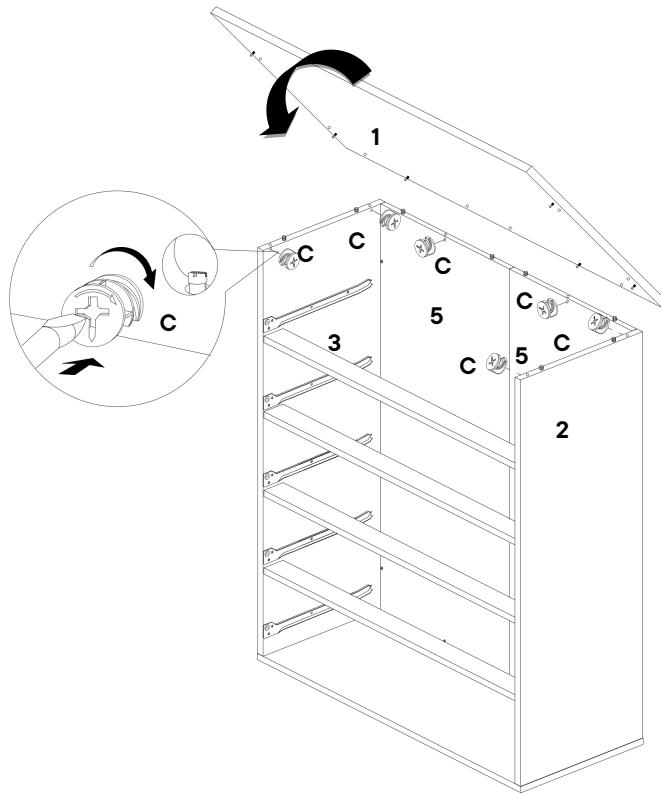
COMPONENTS

1 Top Panel x1

2 Right Side Panel x1

3 Left Side Panel x1

5 Back Panel x2



Step 10

HARDWARE

A JCBC M6 x 80mm x4

K JCBC M6 x 60mm x4

Q Allen Key x1

COMPONENTS

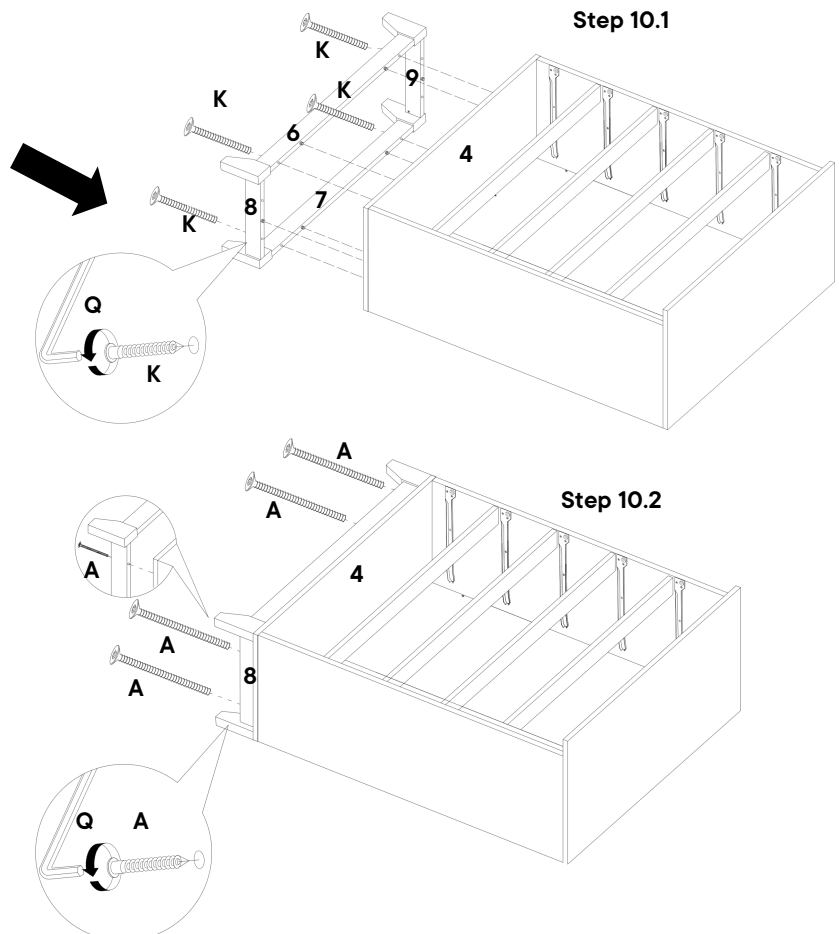
4 Bottom Panel x1

6 Front Leg Panel x1

7 Back Leg Panel x1

8 Right Leg Support x1

9 Left Leg Support x1



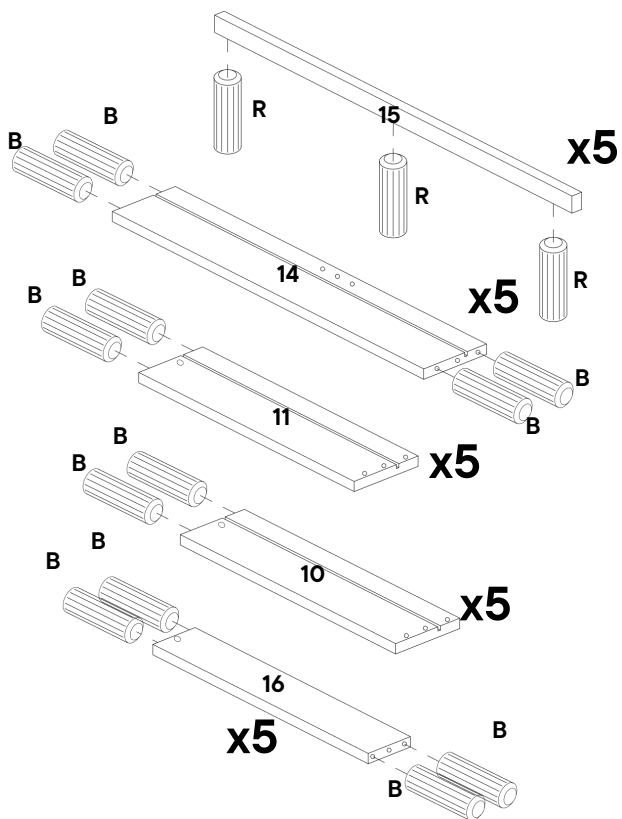
Step 11

HARDWARE

- B** Wooden Dowel Ø6 x 30mm x60
- R** Wooden Dowel Ø6 x 25mm x15

COMPONENTS

- 10** Drawer Right x5
- 11** Drawer Left x5
- 14** Drawer Back x5
- 15** Drawer Handle x5
- 16** Drawer Support x5



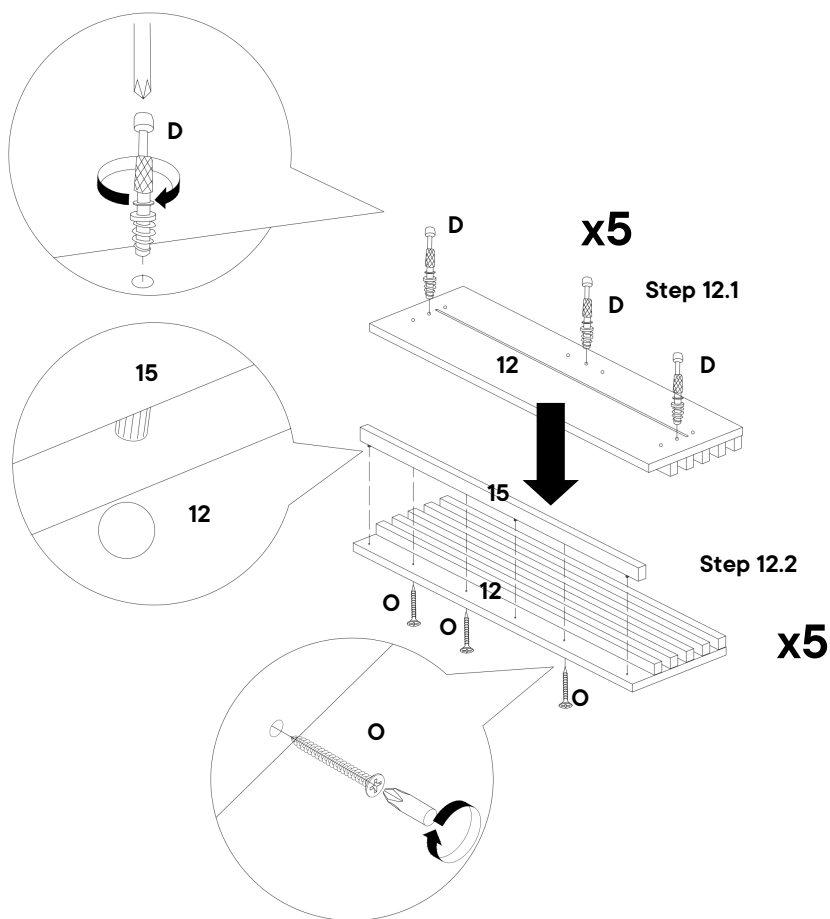
Step 12

HARDWARE

- D** Cam Bolt- Ø6 x 32mm x15
- O** C/board Screw Ø4 x 25mm x15

COMPONENTS

- 12** Drawer Head x5
- 15** Drawer Handle x5



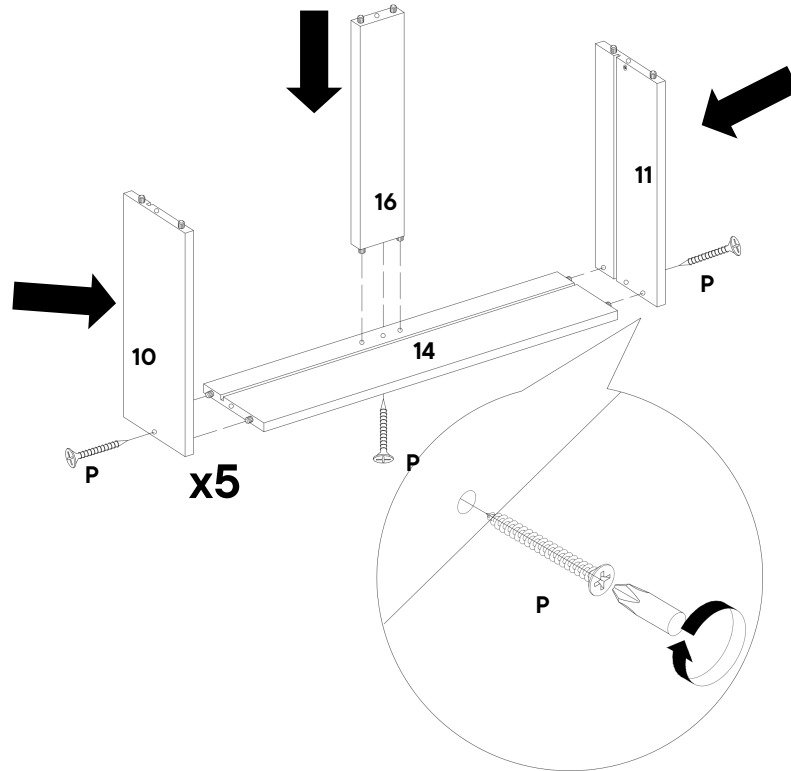
Step 13

HARDWARE

P C/board Screw $\varnothing 4 \times 38\text{mm}$ x15

COMPONENTS

- 10** Drawer Right x5
- 11** Drawer Left x5
- 14** Drawer Back x5
- 16** Drawer Support x5



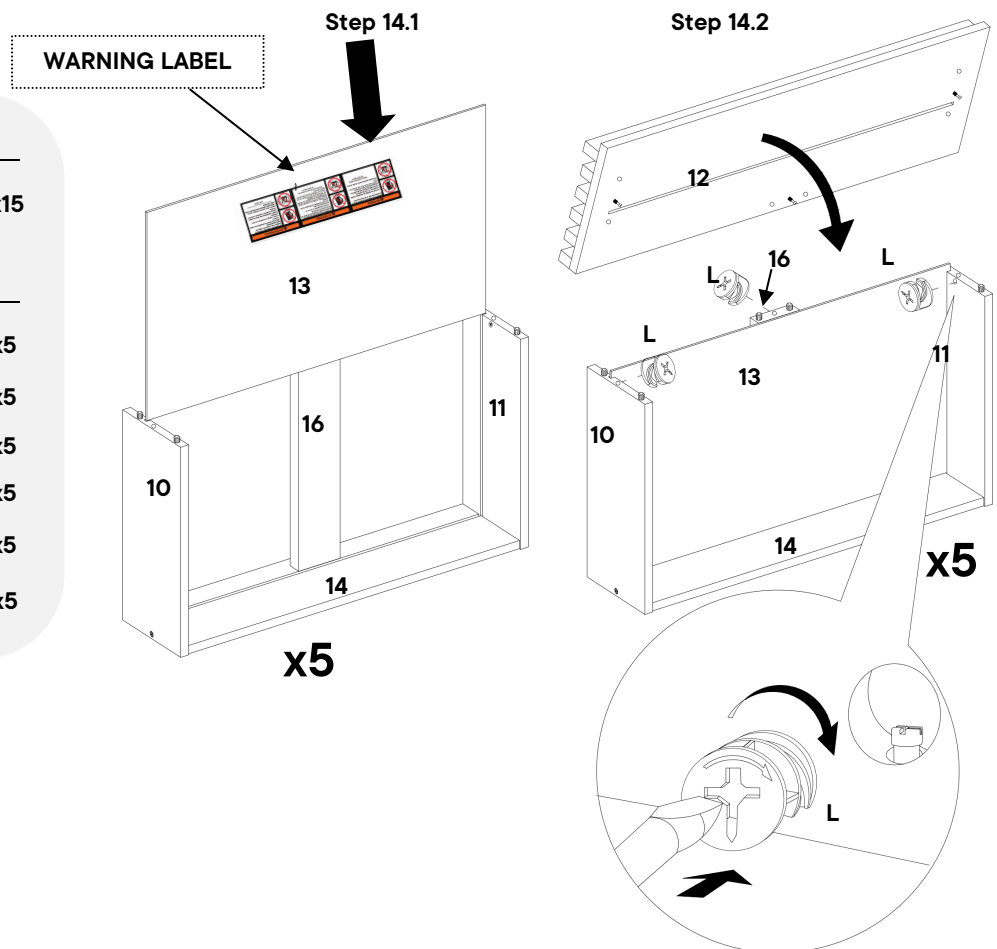
Step 14

HARDWARE

L Cam Lock- $\varnothing 12 \times 9.9\text{mm}$ x15

COMPONENTS

- 10** Drawer Right x5
- 11** Drawer Left x5
- 12** Drawer Head x5
- 13** Drawer Base x5
- 14** Drawer Back x5
- 16** Drawer Support x5



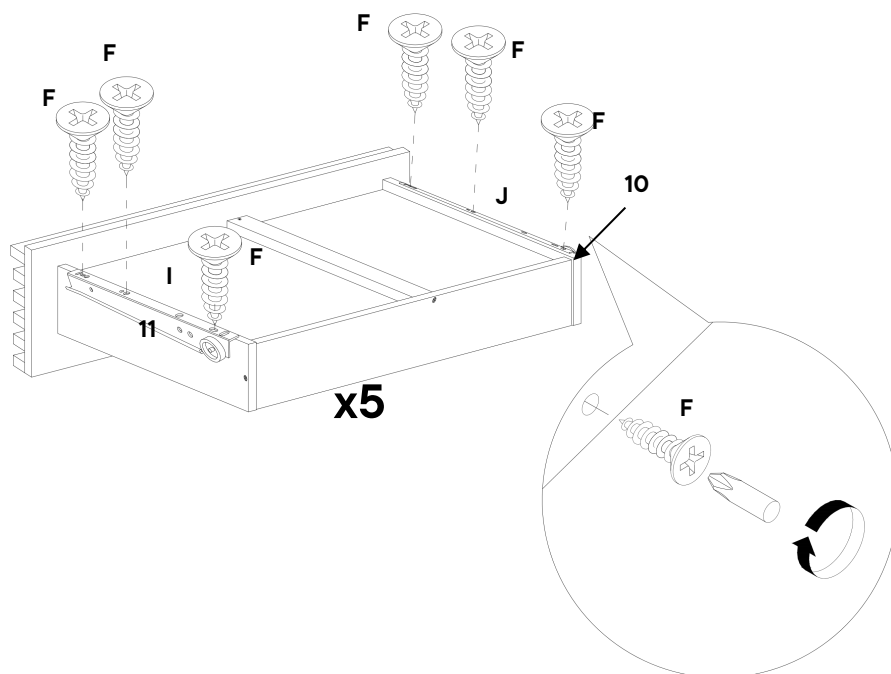
Step 15

HARDWARE

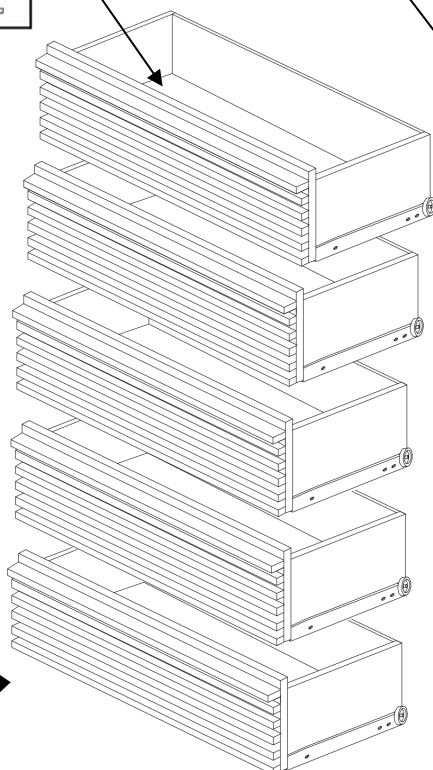
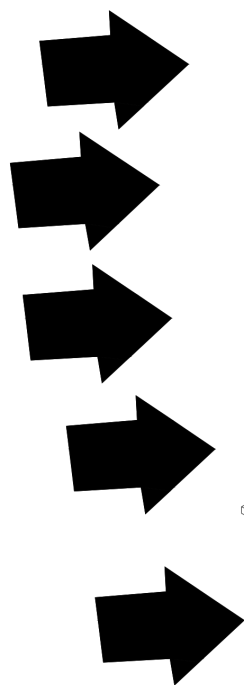
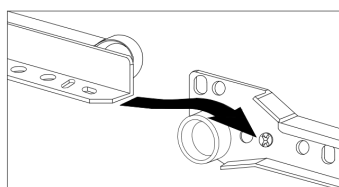
- F** C/board Screw Ø3.5 x 16mm x30
- I** Drawer Runner Left x5
- J** Drawer Runner Right x5

COMPONENTS

- 10** Drawer Right x5
- 11** Drawer Left x5



Step 16



Great job!

Drawer Chest assembly is complete.

♥ CARING FOR YOUR ITEM

Indoor use only.

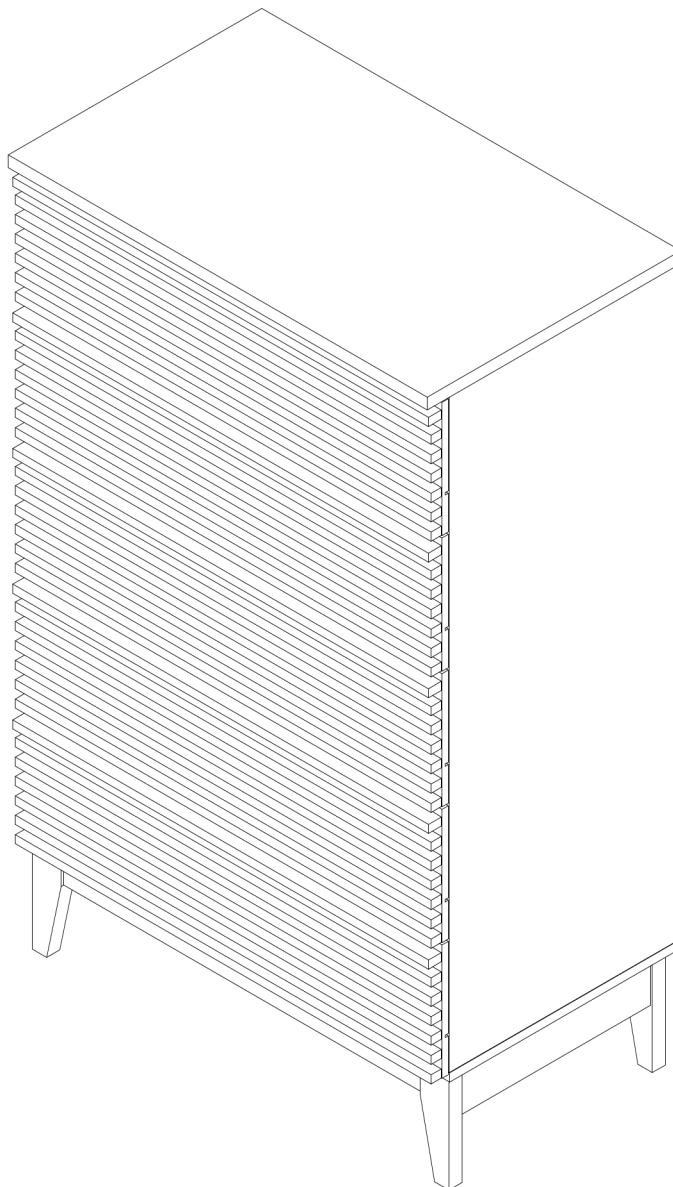
Not contract grade.

Clean using a non-abrasive cloth and a mild cleaner.

Never use harsh chemicals, as they could damage the finish or integrity of the item.

CONNECT WITH US!

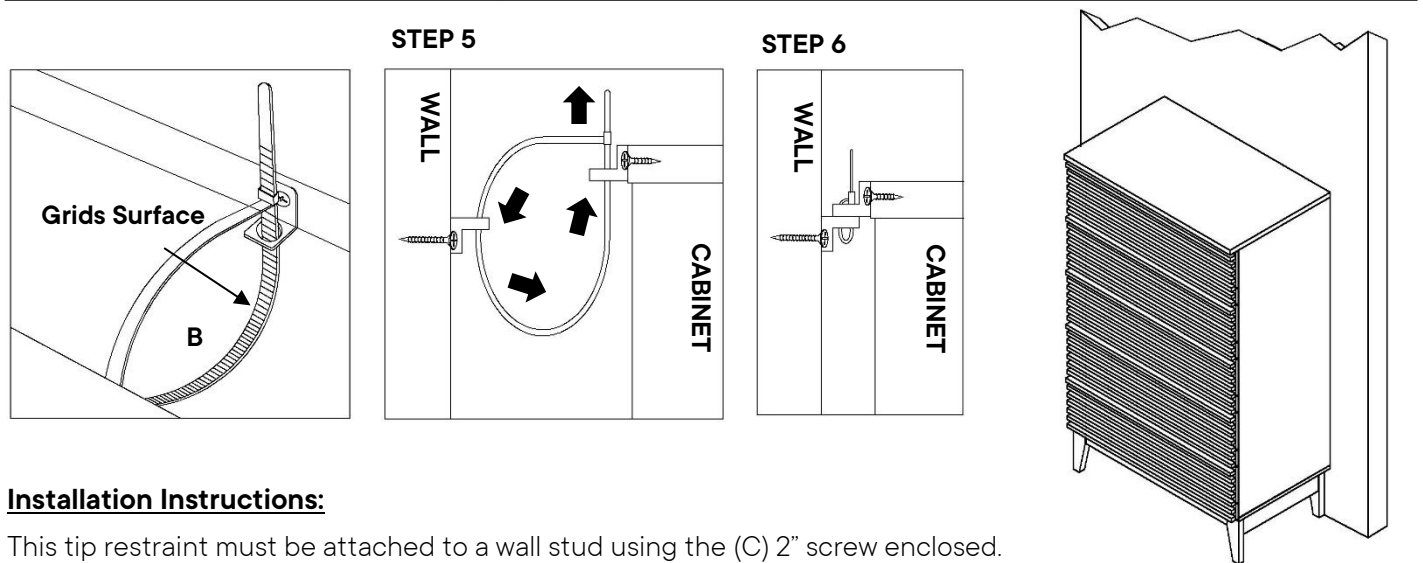
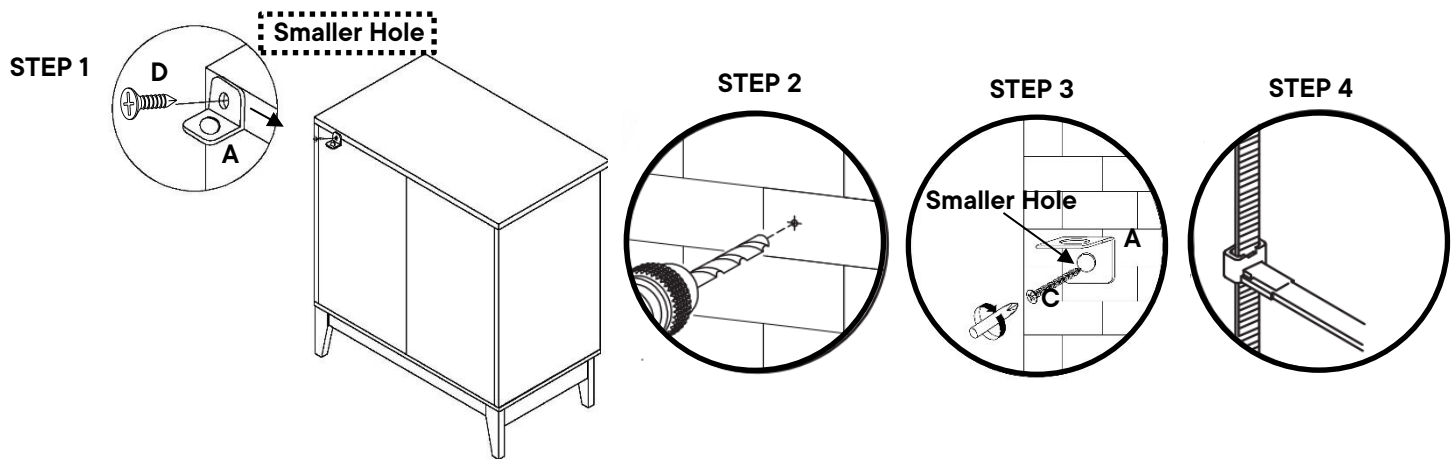
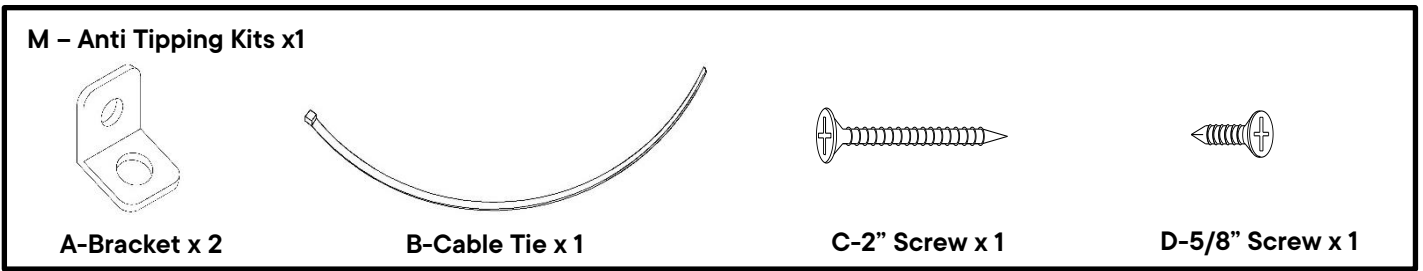
Tag us **@modway_furniture** and **#modway** for a chance to be featured.



TIPPING RESTRAINTS KIT INSTALLATION GUIDANCE

Different wall materials require unique wall fasteners.

Please consult your local hardware store to ensure you are using the correct hardware for your wall type



Installation Instructions:

This tip restraint must be attached to a wall stud using the (C) 2" screw enclosed.

1. Attach a bracket (A) securely to the back top rail of the furniture using the 5/8" screw (D) provided, through the smaller hole.
2. Locate the other bracket (A) on the wall over a wall stud and 2 inches below the mounting bracket secured to the back of your unit. Attach to the wall stud using the (C) 2" screw provided, through the smaller hole.
3. Place the furniture into position so both mounting brackets are vertically in line.
4. Lace the end of the restraint strap (B) through the larger hole in each mounting bracket. Bring both ends together and slide the flat end through the locking end and draw it through until all slack is removed.
5. Confirm that the strap (B) is securely laced and locked.