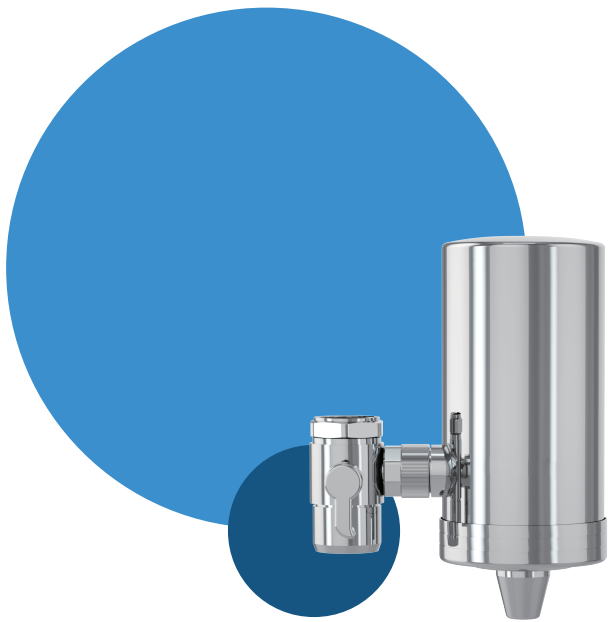


460mm

155mm



MIST

COUNTERTOP STAINLESS STEEL FAUCET FILTRATION SYSTEM

INSTALLATION MANUAL

Model: MFSO95

About the System

Thanks for choosing the Mist Stainless-steel Faucet Water Filtration System.

This faucet filtration system uses activated carbon block to give you clean and healthy water. The system is made of 304 food grade stainless steel to ensure guaranteed quality and durability. Each filter can provide you with 320 gallons of clean water.

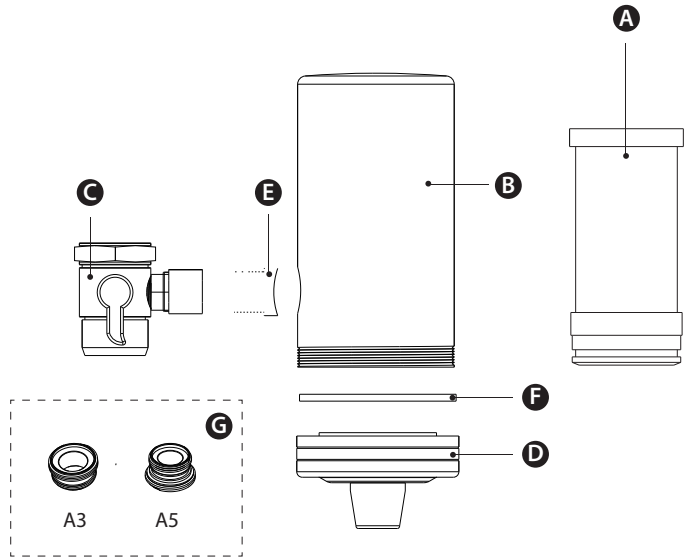
System Specifications

To achieve optimal performance, it is recommended to use the system within the system specifications.

System Model No.	MFSO95
Rated Capacity	3 months or 320 gallons
Rated Flow	0.5 gpm/2 lpm
Operating Temperature	44-100°F/5-38°C
Operating Working Pressure	15-100 psi/100-689 kPa

NOTE: Do not use with water that is microbiologically unsafe or of unknown quality without adequate disinfection before or after the system.

Parts List



- (A) Activated carbon block filter
(B) Filter top cover
(C) Outlet Valve
(D) Filter base
(E) Connector
(F) Sealing ring
(G) A3 adapter (15/16-27)
A5 adapter (M18.5)

Installation Instructions

1. Take out the filter (A) and remove the package.
2. Take out the system and adapters (A3/A5) and twist off the filter base (D) counterclockwise. Keep the water outlet hole of the filter downward and put the filter on the filter base (D). Twist on the filter base (D) clockwise. [Figure 1.1]

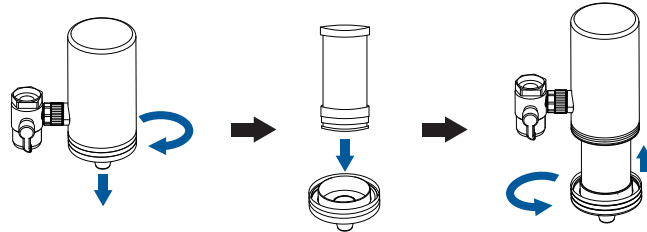


Figure 1.1

3. Remove the aerator of the faucet and choose the right adapter to match your faucet threading. Make sure the washer between the fauet and the system is installed firmly.

How to Choose the Right Adapter

- (1). For external threaded faucets, please connect the Outlet valve (C) to the faucets.
- (2). For internal threaded faucets, select the appropriate adapter (A3/A5) according to the thread size. Use a coin to connect it to the Outlet valve (C). Then connect the adapter to the faucet.



If you still cannot connect it properly, please contact customer service to get another adapter.

4. Switch the lever to the level position and run water to the system slightly. Flush it for 3 minutes during the first sue. [Figure 1.2]

Tips: If there is water leakage at the connecting position between the faucet and the system, it is recommended to use a wrench to assist in tightening the nut on (C), or use the Teflon Tape inside the instruction package to avoid leakage.

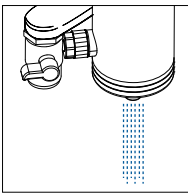


Figure 1.2

NOTE: There may be a small amount of black water during the first use. This is a normal phenomenon because of the activated carbon. Feel free to use the water after it becomes clear.

Use Method

1. Switch the lever to the downward direction to get tap water. [Figure 1.3]
2. Switch the lever to the level direction to get pure water. [Figure 1.4]

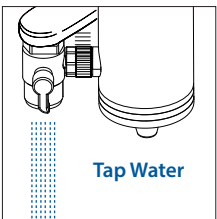


Figure 1.3

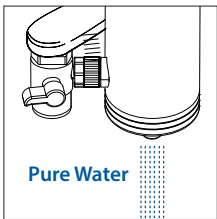


Figure 1.4

NOTE:
1. Before the first, run cold water for 3 minutes in the "pure water" position. Do not run water at a temperature hgiher than 100°F/38°. There may be a small amount of black water and the sound of water pushing air out of the filter during the first use. This is a normal phenomenon becaue of the active carbon. Feel free to use the water after it becomes clear.
2. Check for water leakage. In the event of leakage, refer to the FAQ or conact customer service.

Warnings

1. Do not use with water above 100°F/38°C.
2. Flush the system for 5-10s before use. If the system has not been used for over 24 hours, run water for 30s before use.
3. Flush the system for 3 minutes before the first use. There may be a small amount of black water during the first use. This is a normal phenomenon because of the active carbon. Feel free to use the water after it becomes clear.
4. Avoid water entering the filtration system from the outletor touching the outlet of the system.
5. Protect the filter system from freezing temperatures, frost, snow, sleet, and ice.
6. Clean the exterior of the system with a soft cloth to maintain its apperance and service life.
7. Replace the filter aevery 3 months or 320 gallons for the best filtration performance.

Frequently Asked Questions

Q: Why does the filtered water run slowly?
A: The water pressure is too low or the filter is clogged. Please check on whether the water pressure of the pipeline is normal.

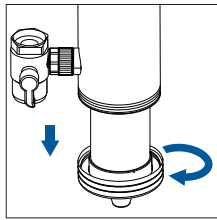
Q: Does the system lower TDS value?
A: TDS stands for total dissolved solids. It is composed of inorganic salts and a small amount of organic matter. This filter cannot lower the TDS value because it removes harmful substances while keeping beneficial trace elements, which can increase the TDS value.

Q: Why does water leak between the mounting base and the faucet?
A: Remove the filtration system from the faucet and check on whether the sealing gasket at the connection is placed correctly. Ensure that the thread between the faucet and the filtration system is screwed in firmly so that the sealing gasket can work.

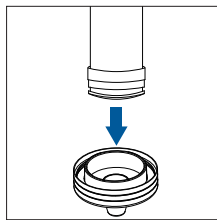
Q: Why doesn't the filtration system connect to the kitchen faucet?
A: There are three connection methods (including two additional adapters). If the system still cannot be connected properly, contact customer service to get another adapter.

Filter Cartridge Replacement

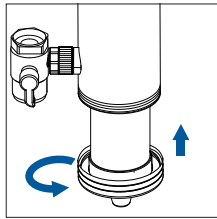
For optimum performance, it is highly recommended you use a genuine Mist faucet replacement water filter. And it is also advisable to change your filter every 3 months or 320 gallons to keep water fresh, whichever comes first. This will vary based on water usage and water quality.



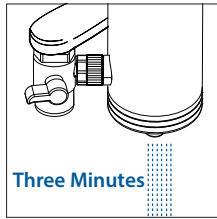
1. Twist off the filter base (D) and remove the expired filter.



2. Take out the new filter and press the new filter into the filter base (D). Ensure that the sealing ring under the filter is in place.



3. Twist the filter base (D) with the filter top cover (B).



4. Switch the lever to the level position and flush for 3 minutes.



FOR EASY REORDER
Use the camera app on your smartphone to scan this QR code



Use code REORDER for 10% off of your next order

COMMENTS? QUESTIONS?

Contact us:
888.612.2513
info@mistfilters.com
www.mistfilters.com