



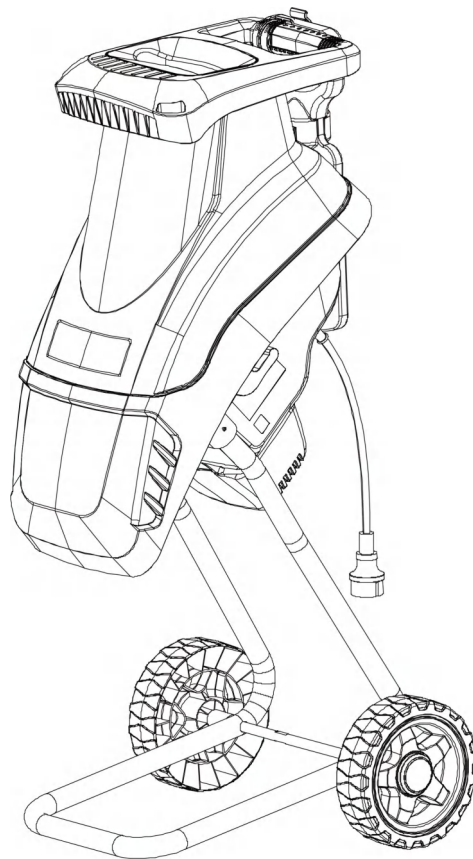
INSTRUCTION MANUAL

ELECTRIC WOOD CHIPPER

Model # AM6610

Item#PS10

 **PROBLEMS? QUESTIONS?**
DO NOT RETURN TO STORE
CALL OUR CUSTOMER HELP LINE
(872)314-0005 Mon-Fri 9-5 EST



Have product questions or need technical support? Please scan the QR code to enter our official website and contact us!

Website: amerisuntools.com

Toll free: 1-872-314-0005 M-F 9-5 EST

Email: support@amerisuninc.com



Website

CONTENTS

TECHNICAL DATA.....	3
INTRODUCTION	4
SAFETY INFORMATION	4
GENERAL SAFETY RULES	5
SPECIFIC SAFETY RULES FOR WOOD CHIPPER.....	8
SYMBOLS	9
ASSEMBLY INSTRUCTION	11
OPERATING INSTRUCTION	13
MAINTENANCE	15
RECYCLING AND DISPOSAL	16
TROUBLE SHOOTING	17
EXPLODED VIEW & PARTS LIST	18
WARRANTY	21

TECHNICAL DATA

Electric Wood Chipper:	Model # AM6610
Motor:	120V,60Hz,15A
No Load Speed:	4200RPM
Branch Diameter:	1-3/4 "
Wheel Size:	7 "
Collection bag:	50L
Package Dimensions (L x W x H):	24.4x11.4x16.6inch
Gross Weight:	25lbs.

INTRODUCTION

Thank You for Purchasing a Amerisun Product. This manual provides information regarding the safe operation and maintenance of this product. Every effort has been made to ensure the accuracy of the information in this manual. Amerisun reserves the right to change this product and specifications at any time without prior notice.

Please keep this manual available to all users during the entire life of the chipper shredder.



This manual contains special messages to bring attention to potential safety concerns, chipper shredder as well as helpful operating and servicing information. Please read all the information carefully to avoid injury and machine damage.

QUESTIONS? PROBLEMS?

Please contact our Customer Service Dept. with any questions and/or comments, either by Email: support@amerisuninc.com , or Toll Free at (872)314-0005. We are available Mon-Fri 9am-5pm EST to help solve any issues that you might encounter.

SAFETY INFORMATION

Before operating this wood chipper, read and observe all warnings, cautions, and instructions on the wood chipper and in this Owner's Manual.

NOTE: The following safety information is not meant to cover all possible conditions and situations that may occur. Read the entire Owner's Manual for safety and operating instructions. Failure to follow instructions and safety information could result in serious injury or death.

This safety alert symbol is used to identify safety information about hazards that can result in personal injury.



A signal word (DANGER, WARNING, or CAUTION) is used with the alert symbol to indicate the likelihood and the potential severity of injury. In addition, a hazard symbol may be used to represent the type of hazard.

DANGER Indicates a hazard, which, if not avoided, will result in death or serious injury.

WARNING Indicates a hazard, which, if not avoided, could result in death or serious injury.

CAUTION Indicates a hazard, which, if not avoided, might result in minor or moderate injury.

CAUTION Without the alert symbol, indicates a situation that could result in damage.

GENERAL SAFETY RULES

Safety is a combination of common sense, staying alert, and knowing how your chipper shredder works. **SAVE THESE SAFETY INSTRUCTIONS.**



WARNING: Do not operate this unit until you read this instruction manual for safety, operation and maintenance instructions. Failure to follow all instructions listed below may result in electric shock, fire, and/or serious personal injury.

Work Area Safety

- Keep your work area clean and well lit. Cluttered and dark areas invite accidents.
- Do not operate power tools in explosive atmospheres, such as in the presence of flammable liquids, gases, or dust. Power tools create sparks which may ignite the dust or fumes.
- Keep bystanders, children, and visitors away while operating a power tool. Distractions can cause you to lose control.

Electrical Safety



WARNING: To avoid electrical hazards, fire hazards or damage to the tool, use proper circuit protection.

This tool is wired at the factory for 120V AC operation. It must be connected to a 120V AC circuit that is protected by a time-delayed fuse or circuit breaker. To avoid shock or fire, replace power cord immediately if it is worn, cut or damaged in any way.

Extension Cord Safety



WARNING: Keep the extension cord clear of the working area. Position the cord so it will not get caught on the work-piece, tools or any other obstructions while you are working with the power tool.

Make sure any extension cord used with this tool is in good condition. When using an extension cord, be sure to use one of heavy enough gauge to carry the current the tool will draw. An undersized cord will cause a drop in line voltage resulting in loss of power and overheating.

The table below shows the correct size to use according to cord length and nameplate ampere rating. If in doubt, use the next heavier gauge. The smaller the gauge number the heavier the cord.

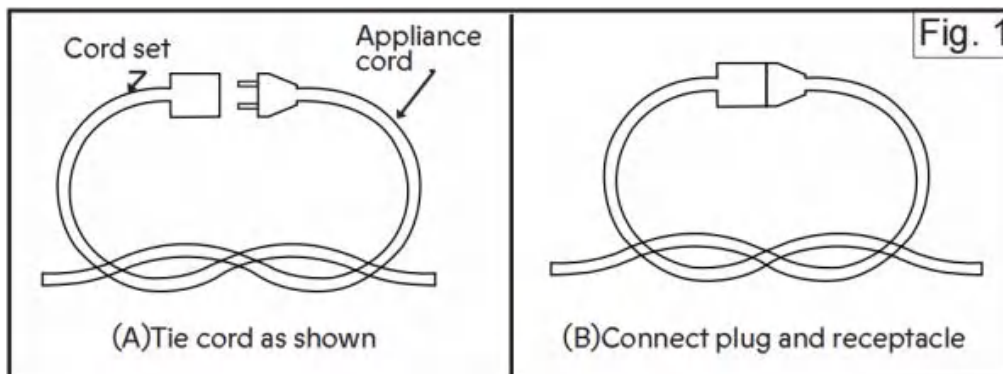
Be sure your extension cord is properly wired and in good condition. Always replace a damaged extension cord or have it repaired by a qualified electrician before using it. Protect your extension cord from sharp objects, excessive heat and damp or wet areas.

Use a separate electrical circuit for your power tools. This circuit must not be less than 14 gauge wire and should be protected with either a 15 AMP time delayed fuse or circuit breaker. Before connecting the

power tool to the power source, make sure the switch is in the OFF position and the power source is the same as indicated on the nameplate. Running at lower voltage will damage the motor.

MINIMUM GAUGE (AWG) OUTDOOR GRADE EXTENSION CORDS (120V USE ONLY)					
Amperage rating		Total length			
More than	Not more than	25' /7.5 m	50' /15 m	100' /30 m	150' /45 m
0	6	18	16	16	14
6	10	18	16	14	12
10	12	16	16	14	12
12	16	14	12	Not Applicable	

To reduce the risk of disconnection of power tool from the extension cord during operating: Make a knot as shown in Fig. 1;



Use one of the plug-receptacle retaining straps or connectors described in this guide.

Avoid unintentional starting – Turn off the power switch and disconnect the power cable before making any adjustments to the unit and before inspecting, servicing, changing accessories or cleaning the power tool.

Handle cord carefully – Never pull power tool by cord or yank it to disconnect from power source. Keep cord away from heat, oil, and sharp edges.

Don't force your power tool– It will do the job better and with less likelihood of a risk of injury at the rate for which it was designed.

Don't Overreach – Keep proper footing and balance at all times.

Stay Alert – Watch what you are doing. Use common sense. Do not operate tool when you are tired or under the influence of alcohol, drugs or medications that cause drowsiness.

Disconnect power tool – Disconnect the power tool from the power supply when not in use, before servicing, when changing accessories.

Keep guards in place and in working order.

Personal Safety

- Stay alert, watch what you are doing and use common sense when operating a power tool. Do not use a power tool while you are tired or under the influence of drugs, alcohol or medication. A moment of inattention while operating power tools may result in serious personal injury.
- Use safety equipment. Always wear eye protection. Dust mask, non-skid safety shoes, hard hat, or hearing protection must be used for appropriate conditions.
- Dress properly. Do not wear loose clothing or jewelry. Contain long hair. Keep your hair, clothing, and gloves away from moving parts. Loose clothes, jewelry, or long hair can be caught in moving parts.
- Avoid accidental starting. Be sure switch is off before connecting to power source and/ or battery pack, pick up or carrying the tool. Carrying power tools with your finger on the switch or energizing power tools that have the switch on invites accidents.

- Remove any adjusting key or wrench before turning the power tool on. A wrench or a key left attached to a rotating part of the power tool may result in personal injury.
- Do not overreach. Keep proper footing and balance at all times. Proper footing and balance enable better control of the power tool in unexpected situations.
- If devices are provided for the connection of dust extraction and collection facilities, ensure these are connected and properly used. Use of dust collection can reduce dust-related hazards.

Service

- Tool service must be performed only by qualified repair personnel. Service or maintenance performed by unqualified personnel could result in a risk of injury.
- When servicing a tool, use only identical replacement parts. Follow instructions in the Maintenance section of this manual. Use of unauthorized parts or failure to follow Maintenance Instructions may create a risk of electric shock or injury.

SPECIFIC SAFETY RULES FOR WOOD CHIPPER



WARNING: Do not operate your wood chipper until it is completely assembled and installed according to the instructions.

- Before starting the wood chipper, make sure that the hopper inlet is empty.
- Keep your face and body away from the opening.
- Do not allow hands or any other part of the body or clothing near the hopper or discharge chute.
- Never put your hands into the hopper while the wood chipper is running. Always use the paddle supplied with your shredder to push items into the hopper.
- Do not try to force objects larger than the recommended diameter of 1-3/4" into the hopper.
- Keep proper balance and footing at all times. Do not overreach. Never stand at a higher level than the base of the tool when feeding material into wood chipper.
- Always stand clear of the discharge zone when operating the wood chipper. Never reach under the chipper until it has come to a complete stop.
- When feeding material into the wood chipper be careful to remove pieces of metal, rocks, bottles, cans or other foreign objects that may damage the blades.
- If the cutting mechanism strikes a foreign object or if the wood chipper should start making any unusual noise or vibration, turn it off and allow it to come to a complete stop. Disconnect from power supply and take the following steps:
 - Inspect for damage;
 - Check for and tighten any loose parts.



WARNING: Never reach into the hopper until the wood chipper has come to a complete stop and is unplugged. The blades will continue to rotate for a few seconds after the chipper is turned off.

- Do not allow processed material to build up in the discharge zone; this may prevent proper discharge and can result in kickback of material through the hopper.














WARNING: Never put your hands near the discharge chute. Failure to heed the warning could result in serious injury.

- If the shredder becomes clogged, turn it OFF and disconnect from power supply before clearing debris. Keep the power source clear of debris and other accumulations to prevent damage to the power source.
- Keep all guards and deflectors in place and in good working condition.
- Do not operate the wood chipper on a paved or gravel surface where ejected material could cause injury.
- Turn off the wood chipper and disconnect it from the power supply whenever you leave the work area.
- Do not tilt the wood chipper while it is running.
- Never reach into the hopper until the chipper shredder has come to a complete stop and has been disconnected from the power supply.

SYMBOLS

Some of the following symbols may be used on this product. Please study them and learn their meaning. Proper interpretation of these symbols will allow you to operate the product better and safer.

SYMBOL	NAME	DESIGNATION/EXPLANATION
V	Volts	Voltage
A	Amperes	Current
Hz	Hertz	Frequency (cycles per second)
W	Watts	Power
MIN	Minutes	Time
	Double Insulation	Class II construction Double Insulated construction
	Safety Alert	Precautions that involve your safety.
	Read the user's manual	To reduce the risk of injury, user must read and understand user's manual before using this product.
	Eye and hearing protection	For protection against injury, wear ear defenders and safety goggles.
	Wear protective gloves	Wear protective gloves when using the machine and handling debris.
	SWITCH OFF!	Remove plug from outlet before cleaning or conducting maintenance checks.
	DANGER! ROTATING BLADES	Keep hands and feet away from openings while the unit is running.
	Keep bystanders away	Keep bystanders a safe distance away from the work area.
	Ricochet	Thrown objects and rotating blade can cause severe injury.
	Wet conditions alert	Do not expose to rain or use in damp locations.
	Electric shock alert	Beware of electric shock hazard.

KNOWING YOUR ELECTRIC WOOD CHIPPER



- | | | | |
|---|---------------------------------|----|----------------------|
| 1 | Mounting for prodder | 7 | Wheels |
| 2 | Release screw | 8 | Transport handle |
| 3 | Prodder | 9 | Loading funnel inlet |
| 4 | On/Off switch | 10 | Loading funnel |
| 5 | Motor housing with cutter plate | 11 | Complete chassis |
| 6 | Mains plug | 12 | Axle |

Unpacking

Unpack the blower and all its parts, and compare against the list below. Do not discard the carton or any packaging materials. Please call 1-872-314-0005 or E-mail us at support@amerisuninc.com if any parts are damaged or missing.

Including:

Wood chipper / Complete chassis/ Wheel*2 / wheel cover*2 / Axle/ sleeve*2 / Prodder / Mounting for prodder / collection bag / self-tapping screw*2 / hexagon socket bolt*2 / gasket*2 / Inner hexagon spanner / User Manual

ASSEMBLY INSTRUCTION

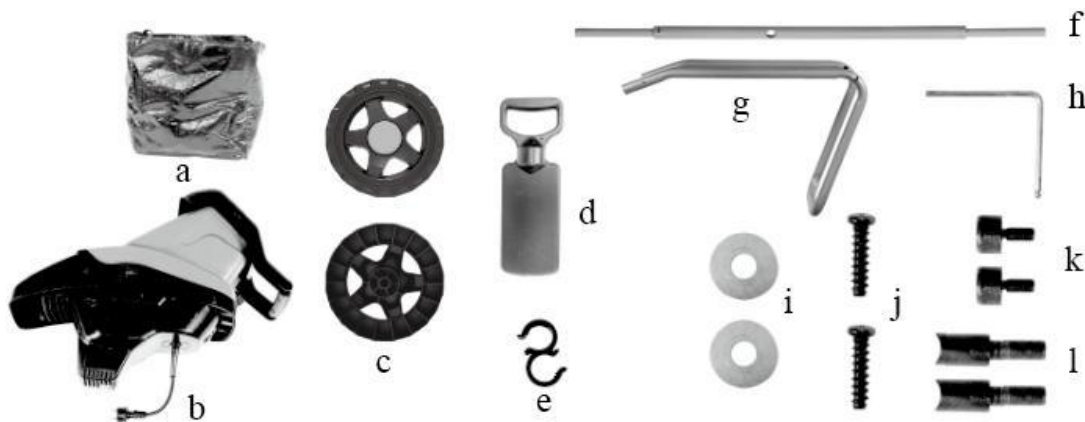


WARNING:

- Do not use this product if any parts on the packing list are already assembled to your product when you unpack it. Parts on this list are not assembled to the product by the manufacturer and require customer installation. Use of a product that may have been improperly assembled could result in serious personal injury.
- If any parts are damaged or missing do not operate this product until the parts are replaced. Use of this product with damaged or missing parts could result in serious personal injury.
- Do not attempt to modify this product or create accessories not recommended for use with this product. Any such alteration or modification is misuse and could result in a hazardous condition leading to possible serious personal injury.
- Do not connect to power supply until assembly is complete. Failure to comply could result in accidental starting and possible serious personal injury.

Unpacking

Unpack the wood chipper and all its parts, and compare against the list. Do not discard the carton or any packaging until the wood chipper is completely assembled.

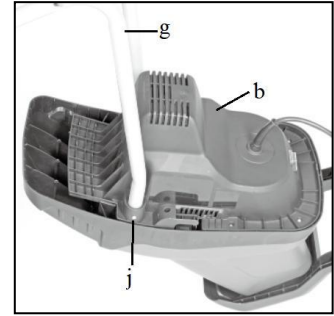


- a Shredded debris bag
- b Chipper shredder
- c Wheel
- d Prodder
- e Mounting for prodder
- f Axle

- g Complete chassis
- h Hex-wrench
- i Washer, outside
- j Screw for chassis assembly
- k Wheel fastening screw
- l Sleeve

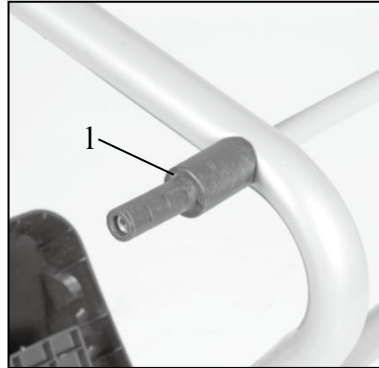
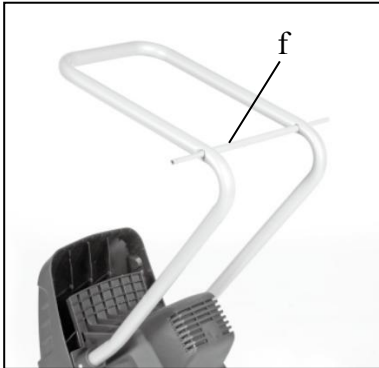
Assembling the chassis

1. Place the motor housing(b) upside down on the floor.
2. Insert the chassis (g) into the provided openings as far as it will go.
3. Using the screws (j) to secure the chassis .



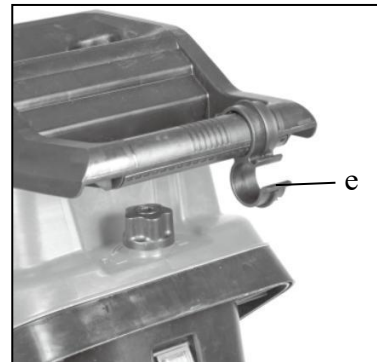
Assembling the axle and wheels

1. Insert the axle (f) through the chassis.
2. Fit the sleeves (l) on both sides.
3. Attach the wheels(c) and washer(i) on both sides.
4. Insert a screwdriver through the holding hole on the axle and secure the wheels with the screws(k).
5. Then fit the wheel caps to the wheels.



Fitting the prodder holder

Press the holder(e) for the prodder onto the transport handle.



Fitting the shredder debris bag

As an option you can fit the supplied collection bag(a) to the equipment. To do so, hang the collection bag on the hooks beside motor housing as shown in the right figure.



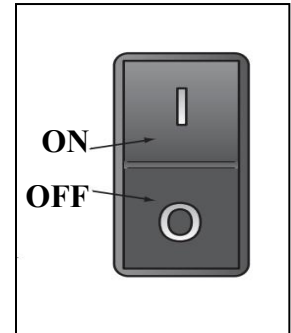
OPERATING INSTRUCTION



WARNING: To reduce the risk of injury, turn unit off, disconnect it from power source before installing and removing accessories, before adjusting or when making repairs. An accidental start-up can cause injury.

Turn The Wood Chipper ON/OFF

- Plug the mains cord of the wood chipper into the socket or extension cord socket(120V). Be sure to observe the relevant information in the safety instructions.
- The machine can be switched ON (“I”) and OFF (“O”) using the ON/OFF switch.



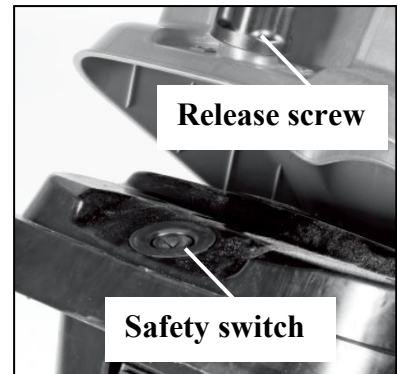
NOTE: The machine cannot be switched on until the voltage has been supplied and the ON/OFF switch has been moved to position “I”. If the chipper is failed to start, check the safety switch.

Safety Switch

The wood chipper has a safety switch in its interior on the motor housing. The control unit for it is located on the loading funnel.

If the loading hopping is not perfectly position or if it is not pressed against the motor housing, the safety switch will trip and prevent the motor from working. If this situation occurs:

1. Open the loading funnel by loosening the release screw.
2. Carefully clean the interior.
3. Close the loading funnel again and ensure that when you switch on the machine again the loading funnel is correctly position, the safety switch is screwed firmly and right in.



WARNING: NEVER undo the release screw without first switching off the machine at the ON/OFF switch and disconnecting the coupling on the machine connection cable (extension) from the machine plug.

Overload Protection (motor circuit-breaker)

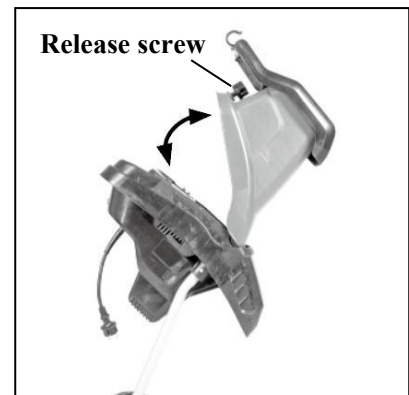
- The motor is protected by an overload switch.
- In case of overloading the equipment will shut down automatically. To restart, set the On/Off switch to ON position (“I”).
- If the motor fails to start, clean the ejector chute.

Practical Tips



WARNING: Important! Wear work gloves! Risk of injury from the cutters.

- Be sure to observe the safety instructions.
- Wear work gloves, goggles and ear protection.
- The material is drawn into the shredder automatically. CAUTION! Long pieces of material projecting out of the funnel inlet may whiplash when it is drawn in – keep a safe distance between yourself and the machine.
- Judge the quantity of material which you put into the funnel inlet so that the funnel does not clog.
- If you want to shred withered, damp material that has been lying in the garden for several days, alternate between putting in this material and branches. This will help to prevent the loading funnel becoming clogged with material.
- Do not shred soft waste (e.g. kitchen waste) – put it straight in the compost box.
- Entangled branches and leaves should be thoroughly shredded before loading any more material.
- Do not allow the discharge opening to become clogged with shredded material – risk of pile-ups.
- Do not cover the ventilation slits.
- Do not place heavy material or thick branches into the machine continuously. This may cause the blade to jam.
- Use the prodger to remove jammed objects from the funnel inlet, use a hook to remove jammed objects from the ejector opening.
- Swing open the loading funnel by opening the release screw and remove it (**see in the right figure**). You can now remove blockages from the inside of the equipment. To assemble, proceed in reverse order.



MAINTENANCE



WARNING: In order to avoid personal injury and the risk of fire and electric shock, always pull out the mains power plug before adjusting, inspecting, or cleaning the power tool.



WARNING: When servicing, use only identical replacement parts. Use of any other parts could create a hazard or cause product damage.

Replacing The Power Cable

If the power cable for this equipment is damaged, it must be replaced by the manufacturer or its after-sales service or similarly trained personnel to avoid danger.

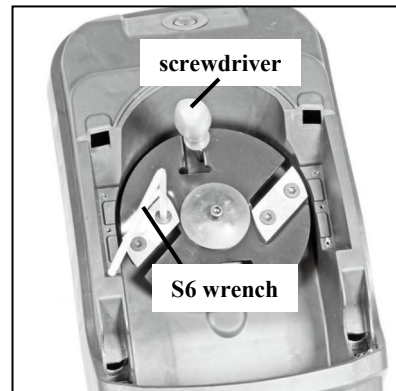
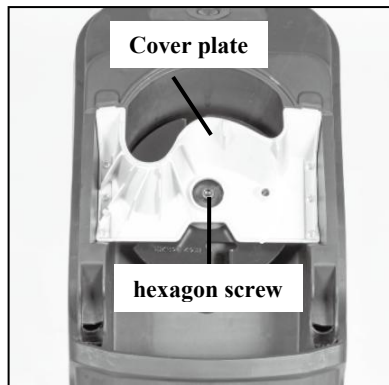
Replace, Sharp And Change Blades

The blades on the blade plate are replaceable. If you have to replace any blade, you must only use genuine blades to ensure that they meet the relevant quality and safety criteria.



WARNING: Always wear heavy duty working gloves. For safety reasons we recommend that you have all sharpening and blade replacement work carried out by a specialist workshop.

1. Swing open the loading funnel by opening the release screw and remove it.
2. Undo the screws with S6 wrench and remove the cover plate.
3. Secure the rotary disk so that it cannot rotate (for example by jamming it with a screwdriver). Undo the four blade screws and remove the blades.
4. Each of the blades can be turned once as they are ground sharp on both ends. If the blade is worn, sharp or replace new blade.



5. To assemble, proceed in reverse order.

Maintenance And Storage

Clean the machine regularly. This will help to keep the machine in good working order and is the basis for a long working life.

- Keep the vent slots clean while you work.
- Clean the plastic body and other plastic parts with a mild household cleaning agent and a damp cloth. Do not use any aggressive agents or solvents for cleaning purposes.
- Never clean the shredder by spraying with water.

- Prevent water getting inside the machine at all cost.
- Check the chassis securing screws from time to time to ensure that they are tight.
- If you do not intend to use the shredder for a lengthy period, protect it from corrosion using environmentally friendly oil.
- Store the device in a dry room.
- Store the device out of reach of children.
- When you have finished your work, pull the loading funnel forwards and clean the inside. Use a brush to remove deposits from metal parts on the inside. Apply a thin coating of oil to the cleaned blade plate and blades.
- When you close the loading funnel, make sure that the safety switch and the release screw are clean.

RECYCLING AND DISPOSAL

Recycle unwanted materials instead of disposing of them as waste. All tools, hoses and packaging should be sorted, taken to the local recycling centre, and disposed of in an environmentally safe way.

Recycle rather than dispose of unwanted material in landfill whenever possible. The machine is delivered in rigid packaging to avoid damage during transportation, but the packaging, roller, and the machine itself are manufactured from recyclable materials and should be disposed of accordingly.

Do not throw your clippings into a rubbish bin where it will be disposed of in landfill. You can dispose of clippings on your compost heap, alternating them with other garden material.

Alternatively, many communities provide a public collection point where you can dispose of your garden waste in an environmentally friendly manner.

Recycle packaging where facilities exist.

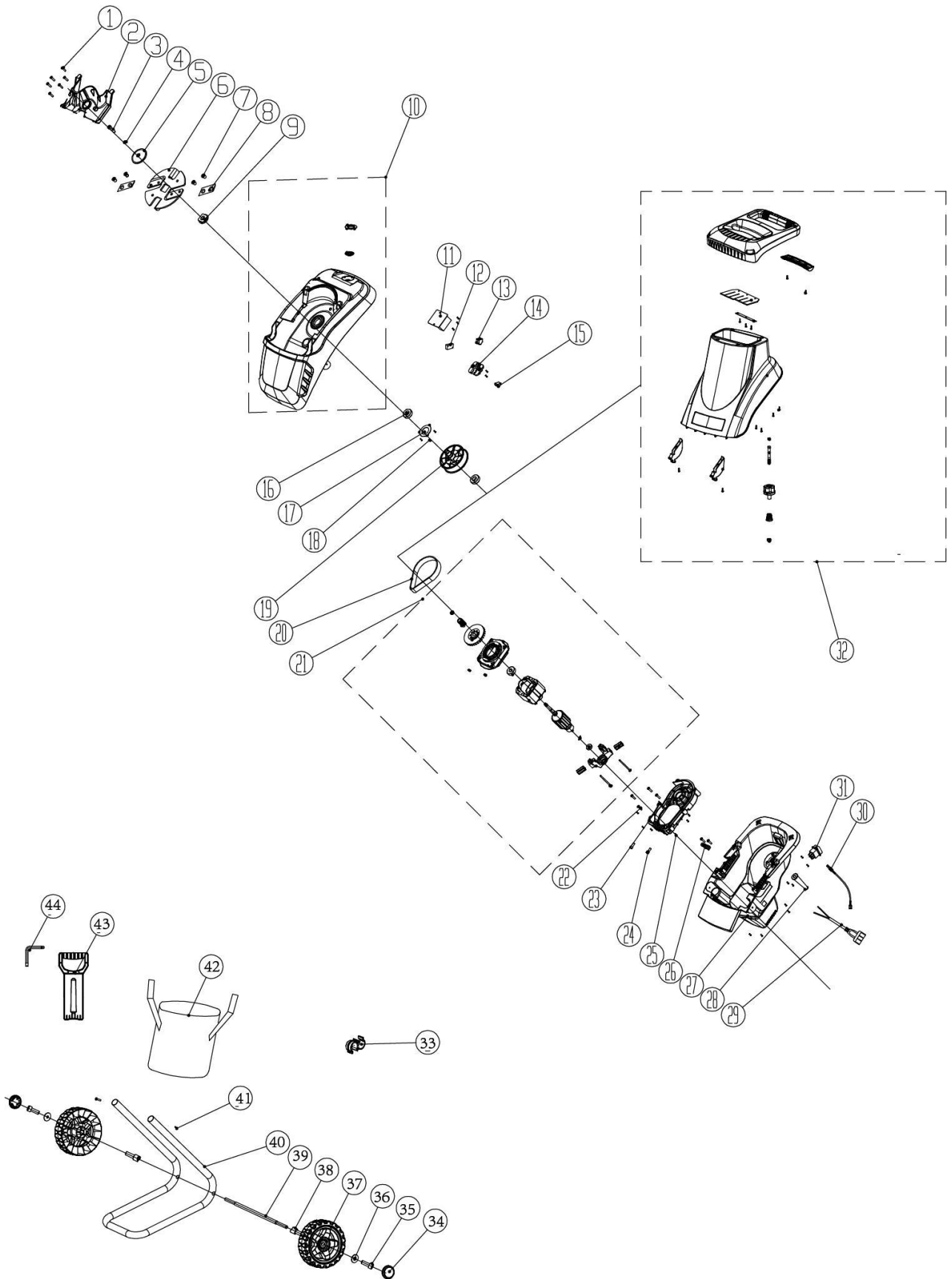
TROUBLE SHOOTING



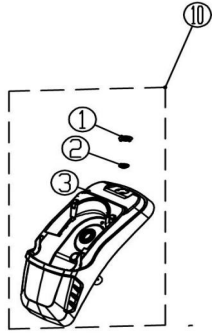
WARNING: Read instruction manual first! Remove battery pack from the tool before making adjustments or assembling accessories.

PROBLEM	POSSIBLE CAUSE	POSSIBLE SOLUTION
The motor does not run.	Power failure/unit not plugged into a working receptacle.	Check to make sure unit is plugged into a working outlet.
	The overload protection has responded.	Press control on overload switch, turn ON/OFF SWITCH to 'I' position.
	Ejector chute is blocked.	Clean ejector chute
	Loading funnel is not secure on the motor housing.	Check the Clean interior and tighten safety Screw.
The material to be chopped is not pulled in.	The material is jammed in the feed inlet.	Disconnect the power supply and open the hopper. Pull the material from the feed inlet.
	The cutting blade is blocked.	Disconnect the power supply and open the hopper. Open the blade cover. Remove the blocked material and replace the blade cover and hopper.
	The discharge chute is blocked.	Disconnect the power supply and open the hopper. Open the plate of the discharge chute to clear the blocked material.
Shredding performance unsatisfactory	Blades worn.	Turn, sharpen or replace blades.

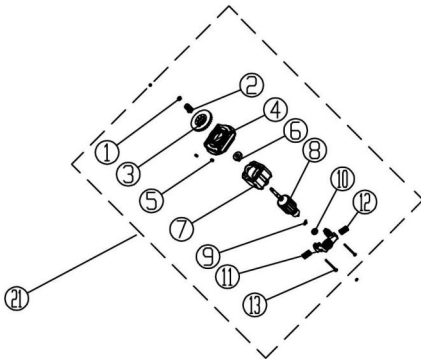
EXPLODED VIEW & PARTS LIST



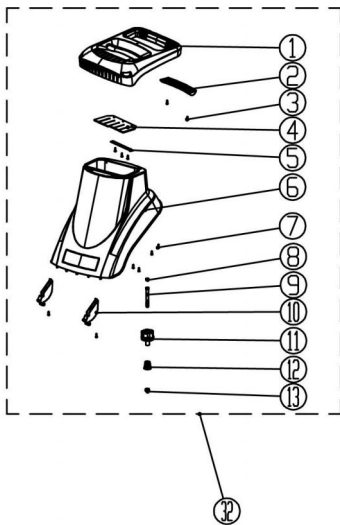
Item	Stock#	Description	Qty.	Item	Stock#	Description	Qty.
1	31000009	Screw BT4×16	19	23	30200246	Belt box	1
2	30700010	Blade defend block	1	24	31000236	Screw M6×15	2
3	31000283	Bolt M8×25	1	25	31000274	Screw BT5×35	6
4	31000285	Spring washer	1	26	30200313	Pressure plate	1
5	30800021	Briquetting	1	27	30200248	motor cover	1
6	30800047	Cutter head	1	28	30300009	Cable sheath	1
7	31000047	Countersunk bolt	4	29	31200321	Cable line	1
8	30400062	Blade	2	30	31100087	connecting line	1
9	30500015	driving block	1	31	31100188	Switch	1
10	31300435	Lower casing assembly	1	32	31300364	Feeder hopper assembly	1
11	31100288	PC board	1	33	30200253	Hook	1
12	31100184	Two way switches	1	34	30200312	wheel cover	2
13	3200261	Nut fixing block	1	35	30400063	Screw M6/Φ235	2
14	30500016	Fixed nut	1	36	31000278	Flat washer	2
15	30200243	Switch holder	1	37	30200311	wheel	2
16	31000266	Bearing	2	38	30200251	Wheel shaft sheath	2
17	30800048	Bearing press plate	1	39	30400128	Wheel shaft	1
18	31000006	Screw	3	40	30900026	Pipe rack	1
19	31300112	Large pulley	1	41	31000009	screw BT4×16	2
20	31300083	Multi wedge	1	42	31400051	collecting bag	1
21	31300433	Motor Assembly	1	43	30200331	Push sticker	1
22	31000019	Screw BT5×16	4	44	31000276	Inner hexagon spanner	1



Item	Stock#	Description	Qty.
10.1	30200241	Cell Lid	1
10.2	30300045	dust cap	1
10.3	30100083	Down housing	1



Item	Stock#	Description	Qty.
21.1	31000054	lock nut M8	1
21.2	30400071	Small belt wheel	1
21.3	30200321	Fan	1
21.4	30200323	Motor front holder	1
21.5	31000054	lock nut M6	2
21.6	31000104	bearing 6201RS	1
21.7	31300432	stator	1
21.8	31300431	rotor	1
21.9	31000089	jump ring	1
21.10	31000239	bearing 608RS	1
21.11	30200353	Rear bracket of the motor	1
21.12	31300122	Carbon brush	2
21.13	31000288	Screw M4x75	2



Item	Stock#	Description	Qty.
32.1	30100106	Feeder hopper	1
32.2	30100081	Handle cove	1
32.3	31000009	Screw BT4×16	7
32.4	30300044	Scraper plate	1
32.5	30800019	Layering	1
32.6	30100104	Upper housing	1
32.7	31000014	Screw BT5×20	4
32.8	30300166	rubber stopper	1
32.9	30400061	Knob screw	1
32.10	30200239	Upper cover fixing hook	2
32.11	30200240	Knob	1
32.12	30600025	Knob press spring	1
32.13	31000054	lock nut M8	1

ONE (1) YEAR LIMITED WARRANTY

Amerisun is committed to building tools that are dependable for years. Our warranties are consistent with our commitment and dedication to quality.

ONE (1) YEAR LIMITED WARRANTY OF AMERISUN PRODUCTS FOR HOME USE.

Amerisun ("Seller") warrants to the original purchaser only, that all Amerisun consumer power tools will be free from defects in material or workmanship for a period of one (1) year from date of purchase. Ninety (90) days for all Amerisun Products, if the tool is used for professional or commercial use.

SELLER'S SOLE OBLIGATION AND YOUR EXCLUSIVE REMEDY under this One (1) Year Limited Warranty and, to the extent permitted by law, any warranty or condition implied by law, shall be the repair or replacement of parts, without charge, which are defective in material or workmanship and which have not been misused, carelessly handled, or misrepaired by persons other than Seller or Authorized Service Center. To make a claim under this Limited Warranty, you must return the entire power tool product; transportation prepaid, to Amerisun Include a legible copy of the original receipt, which lists the date of purchase (month and year) and the name of the company purchased from.

THIS LIMITED WARRANTY DOES NOT APPLY TO ANY ACCESSORY ITEMS INCLUDED WITH THE TOOL SUCH AS CIRCULAR SAW BLADES OTHER RELATED ITEMS OR TO ANY REPLACEMENT PARTS LISTED UNDER MAINTENANCE.

ANY IMPLIED WARRANTIES SHALL BE LIMITED IN DURATION TO ONE (1) YEAR FROM DATE OF PURCHASE. SOME STATES IN THE U.S. AND SOME CANADIAN PROVINCES DO NOT ALLOW LIMITATIONS ON HOW LONG AN IMPLIED WARRANTY LASTS, SO THE ABOVE LIMITATION MAY NOT APPLY TO YOU.

IN NO EVENT SHALL SELLER BE LIABLE FOR ANY INCIDENTAL OR CONSEQUENTIAL DAMAGES (INCLUDING BUT NOT LIMITED TO LIABILITY FOR LOSS OF PROFITS) ARISING FROM THE SALE OR USE OF THIS PRODUCT. SOME STATES IN THE U.S. AND SOME CANADIAN PROVINCES DO NOT ALLOW THE EXCLUSION OR LIMITATION OF INCIDENTAL OR CONSEQUENTIAL DAMAGES, SO THE ABOVE LIMITATION OR EXCLUSION MAY NOT APPLY TO YOU.

THIS LIMITED WARRANTY GIVES YOU SPECIFIC LEGAL RIGHTS, AND YOU MAY ALSO HAVE OTHER RIGHTS WHICH VARY FROM STATE TO STATE IN THE U.S., PROVINCE TO PROVINCE IN CANADA AND FROM COUNTRY TO COUNTRY.

For questions / comments, technical assistance or repair parts –
Please call toll free at: 1-872-314-0005 (M-F 9am – 5pm EST)
Email: support@amerisuninc.com

SAVE YOUR RECEIPTS. THIS WARRANTY IS VOID WITHOUT THEM.

AMERISUN