

DVE45R6100V

Samsung Front Load Gas Dryer with Steam Sanitize+

7.5 cu. ft. Capacity DOE



Signature Features

Steam Sanitize+

- The Steam Sanitize+ cycle removes 99.9% of germs and bacteria, over 95% of pollen, and kills 100% of dust mites¹. Multi-Steam Technology steams away wrinkles, odors, and static.

Sensor Dry

- Automatically optimizes the time and temperature of your drying cycle to protect your clothes from heat damage, while avoiding excess energy use.

Smart Care

- Easy troubleshooting from the convenience of your smartphone². Smart Care interacts with your washer and dryer to perform an immediate diagnosis and offer quick solutions.

Available Colors



Steam Sanitize+



Sensor Dry

Features

- Steam Sanitize+
- Sensor Dry
- Smart Care
- Interior Drum Light
- 10 Preset Drying Cycles
- 9 Additional Drying Options
- 5 Temperature Levels
- 4-Way Venting
- Reversible Tinted Door
- LED Display: Ice Blue

Convenience

- Child Lock
- Lint Filter Indicator



ADA Compliant³

Rating

644 kWh/yr

¹Based on internal testing and independently verified by Intertek. Individual results may vary.

²Requires Samsung Smart Washer/Dryer App. The Samsung Smart Washer/Dryer app supports Android OS 2.3.6 or later and iOS 3 or later for iPhone models. Smart Washer/Dryer app available in App Store and Play Store.

³ADA Compliant when using a Samsung 27" wide riser (WE272NV, WE272NC or WE272NW).

DVE45R6100V

Samsung Front Load Gas Dryer with Steam Sanitize+

7.5 cu. ft. Capacity DOE

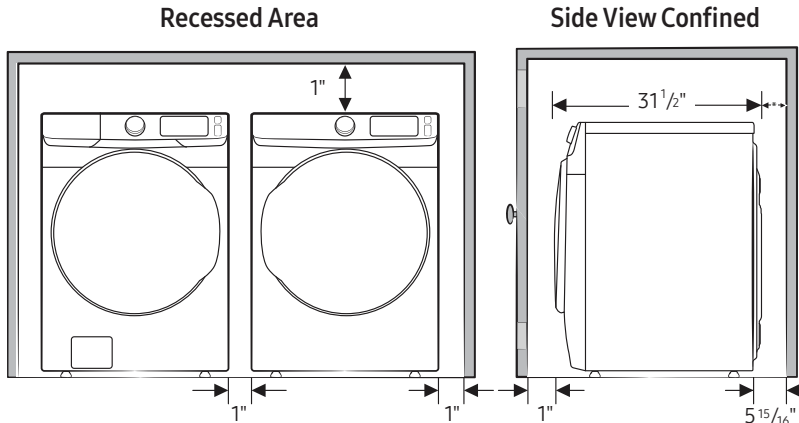
Installation Specifications

If the washer and dryer are installed together or the dryer alone, the closet front must have two unobstructed air openings for a combined minimum total area of 72-inch² (see stacked build below). Your washer alone does not require a specific air opening.

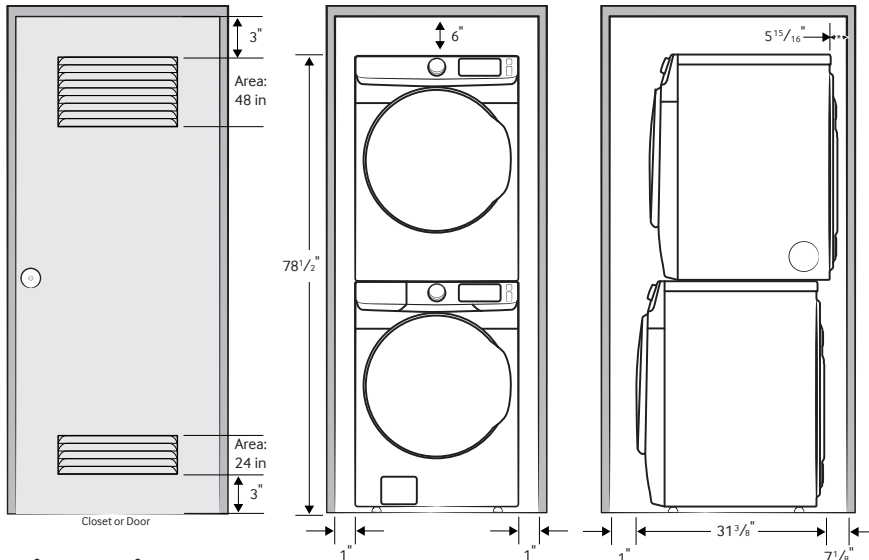
*Required spacing (External exhaust elbow may require additional space.)

1. Alcove or closet installation

Minimum Clearance for Closet and Alcove Installations:

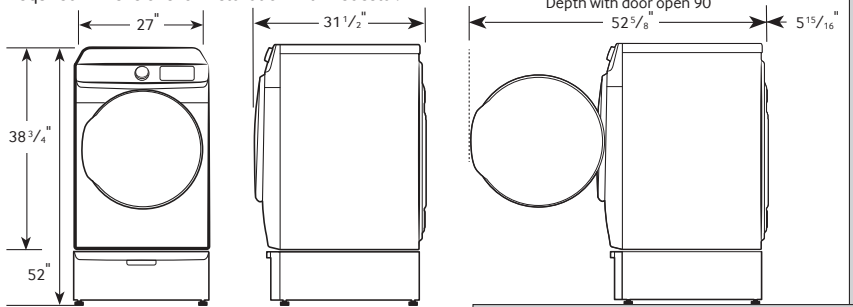


2. With stacked washer and dryer



Dimensions

Required Dimensions for Installation with Pedestal:



4-Way Venting

10 Preset Drying Cycles:

Refresh, Steam Sanitize+, Normal, Heavy Duty, Permanent Press, Bedding, Delicates, Time Dry, Air Fluff, Quick Dry

9 Additional Drying Options:

Damp Alert, Wrinkle Prevent, Adjust Time (Up), Adjust Time (Down), Eco Dry, Child Lock, Smart Care, Alarm Off, Drum Light

5 Temperature Levels:

High, Medium High, Medium, Medium Low, Low

5 Dry Levels:

More Dry, Normal-More Dry, Normal Dry, Normal-Less Dry, Less Dry

Warranty

One (1) Year Parts and Labor

Product Dimensions & Weight (WxHxD)

Dimensions: 27" x 38 3/4" x 31 1/2"

Weight: 123 lbs

Shipping Dimensions & Weight (WxHxD)

Dimensions: 29 3/8" x 42 9/16" x 33 1/2"

Weight: 130 lbs

Electric

Fingerprint Resistant
Black Stainless Steel
Platinum
Champagne
White

Model

DVE45R6100V 887276412146
DVE45R6100P 887276300443
DVE45R6100C 887276305943
DVE45R6100W 887276300450

Gas

Fingerprint Resistant
Black Stainless Steel
Platinum
Champagne
White

Model

DVG45R6100V 887276412153
DVG45R6100P 887276300481
DVG45R6100C 887276305271
DVG45R6100W 887276300498

Matching Washer

Fingerprint Resistant
Black Stainless Steel
Platinum
Champagne
White

Model

WF45R6100AV 887276412160
WF45R6100AP 887276299464
WF45R6100AC 887276305295
WF45R6100AW 887276299471

Pedestal

Fingerprint Resistant
Black Stainless Steel
Platinum
Champagne
White

Model

WE402NV 887276310145
WE402NP 887276310138
WE402NC 887276310121
WE402NW 887276310152

Riser

Fingerprint Resistant
Black Stainless Steel
Champagne
White

Model

WE272NV 887276197630
WE272NC 887276393940
WE272NW 887276197647

Accessories

Stacking Kit
Vent Kit

SKK-8K
DV-2A

887276344034
887276146416