



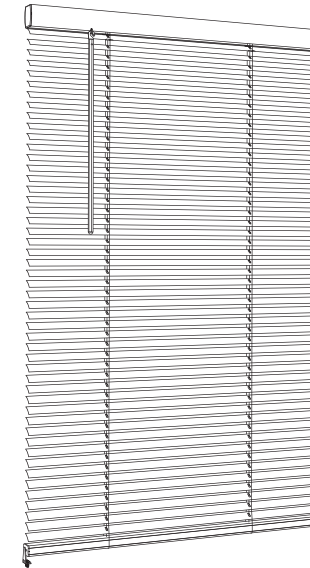
PROJECT SOURCE and logo design are trademarks or registered trademarks of LF, LLC. All rights reserved.

ITEM #889861 / 889862 / 889863 / 889864 / 889865 /
889866 / 889867 / 889868 / 889869 / 889870 /
889871 / 889872 / 889873 / 889874 / 889875 /
889876 / 889877 / 889878 / 889879 / 889880 /
889881 / 889882 / 889883 / 889884 / 889885 /
889886 / 889887 / 889888 / 889889 / 889890 /
889891 / 889892 / 889893 / 889894 / 889895 /
889896 / 889897 / 889898 / 889899 / 889900 /
889901 / 889902 / 889903 / 889904 / 889905 /
889906 / 889907 / 889908 / 889909 / 889910
MODEL #42824 - 42873

1 INCH CORDLESS VINYL MINI BLIND

[Español p. 13](#)

ATTACH YOUR RECEIPT HERE



Serial Number _____

Purchase Date _____

Thank you for purchasing this PROJECT SOURCE product.
Questions, problems or missing parts?
Before returning, contact us on:
866-389-8827, 8 a.m. - 8 p.m., EST or ascs@lowes.com.

XXXXXXX

TABLE OF CONTENTS

Package Contents..... 2

Hardware Contents..... 2

Preparation..... 3

Assembly Instructions..... 3

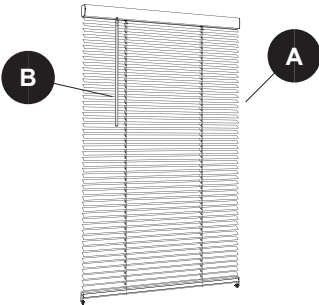
Operating Instructions..... 6

Care and Maintenance 7

Warranty..... 7

Replacement Parts List..... 7

PACKAGE CONTENTS



PART	DESCRIPTION	QUANTITY
A	Blind	1
B	Wand	1

HARDWARE CONTENTS



Mounting Bracket
23 in. - 47 in.
Qty. 2
48 in. - 72 in.
Qty. 3



Hold Down
Bracket
Qty. 2



Medium
Screw
Qty. 4



Large Screw
23 in. - 47 in.
Qty. 4
48 in. - 72 in.
Qty. 6

PREPARATION

Before beginning assembly of product, make sure all parts are present. Compare parts with package contents list and hardware contents list. If any part is missing or damaged, do not attempt to assemble, install or operate the product.

Estimated Assembly Time: 30 minutes

Tools Required for Assembly (not included): Pencil, safety goggles, Phillips screwdriver, tape measure, level, drill, 1/16 in. bit, .

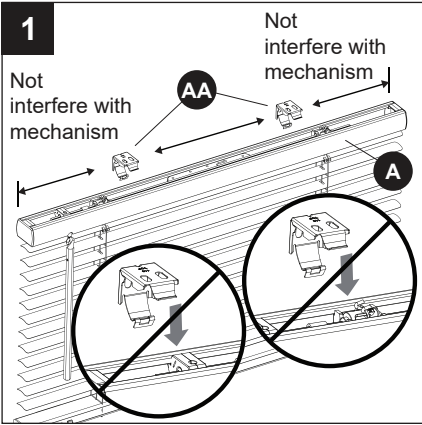
Helpful Tools (not included): Step stool.

ASSEMBLY INSTRUCTIONS

1. Lay closed blind on a flat surface. Measure blind head rail seven inches in from left and mark with a pencil, and seven inches in from right and mark with a pencil. Adjusting the marks as needed, not to interfere with the working mechanisms. These will be your mounting bracket (AA) locations. Note: Blinds over 47-in will require a center bracket. For over 47-in blinds, measure from left pencil mark to right pencil mark and place a pencil mark at the center location. Adjusting as needed, not to interfere with the working mechanisms.

Hardware Used

AA Mounting Bracket



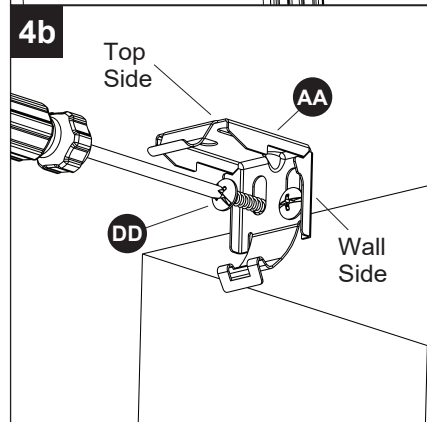
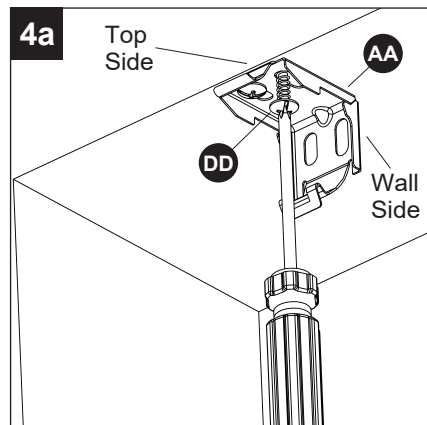
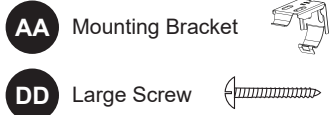
2. Choose your mounting type: inside or outside mount.

3. Position the closed, pencil marked blind in the mounting position. Make pencil marks on the mounting surface that line up with the pencil marks on the blind head rail. These marks on the mounting surface indicate the placement of the brackets.

ASSEMBLY INSTRUCTIONS

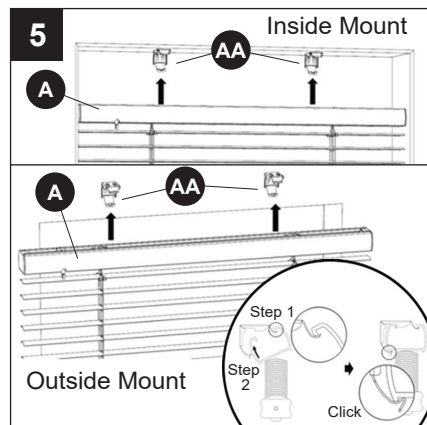
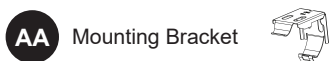
4. Line up mounting brackets (AA) with the markings and pre-drill the screw holes. Secure the mounting bracket (AA) to the wall or window molding with screws (DD).

Hardware Used



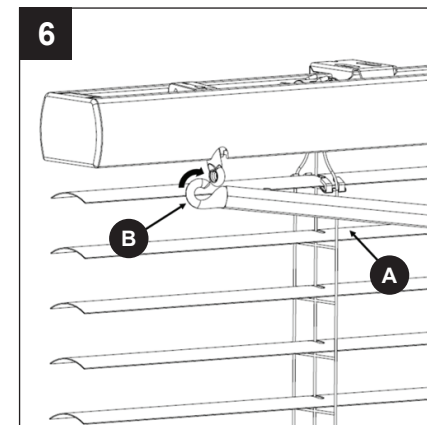
5. Lift the blind (A) head rail into position, such that the inner front edge of the head rail slides into the slot at the front of each mounting bracket (AA). Push the head rail upward until the flexible tab at the bottom of each mounting bracket (AA) snaps onto the back of the headrail. Check carefully to ensure the head rail is properly snapped into place.

Hardware Used



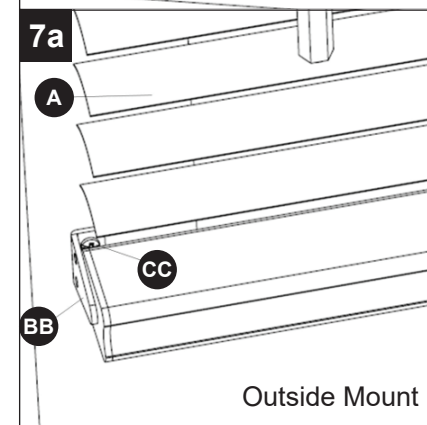
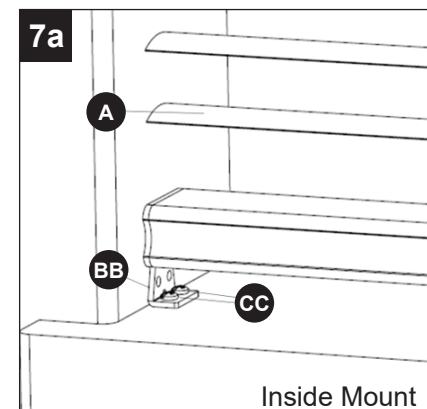
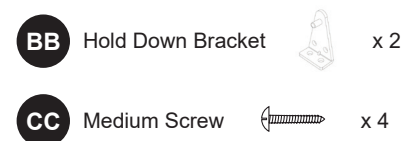
ASSEMBLY INSTRUCTIONS

6. Install the wand (B) by hooking it into the loop on left side of the head rail.



7. **OPTIONAL:** To install hold down brackets (BB), lower blind to desired position. Screw the hold down brackets (BB) into the wall or window sill using medium screws (CC). Then connect the hold down brackets to the holes on both the left and right side of the bottom rail.

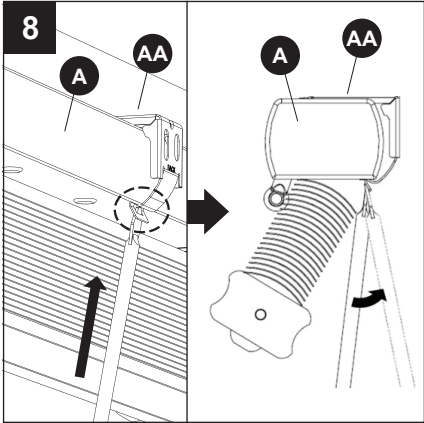
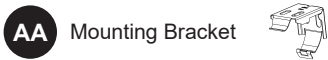
Hardware Used



ASSEMBLY INSTRUCTIONS

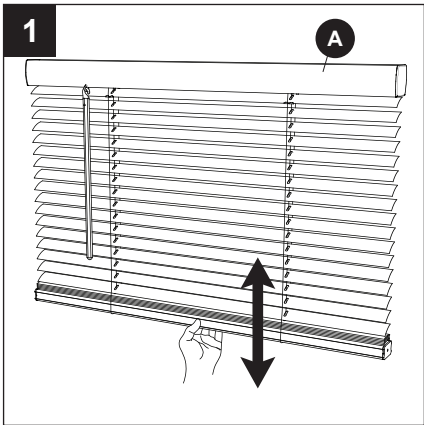
8. **OPTIONAL:** To remove the blind (A) from the mounting brackets (AA) after installation, raise the blind to the up most position and lift the bottom of the blind to gain access to the flexible tab on the bottom of the mounting brackets. Use a screwdriver (not included) to press in the flexible tab until the blind loosens. Repeat for all the mounting brackets.

Hardware Used

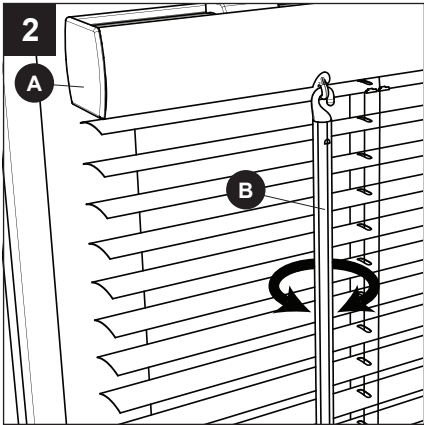


OPERATING INSTRUCTIONS

1. Raise or lower the mini blind (A) by grasping the bottom rail and raising or lowering to the desired height.



2. Open or close the mini blind (A) slats by grasping the wand and turning the wand (B) until the slats are opened or closed to the desired amount.



CARE AND MAINTENANCE

Clean using damp cloth, dust, or vacuum using proper attachments.

WARRANTY

For a period of one (1) year from the date of purchase, the manufacturer will replace this window covering with one of equal value if this window covering is found to be defective in material or workmanship. This warranty does not cover damage or defects caused by or resulting from improper maintenance, negligent or improper use, abuse, neglect, accidents, act of God, alteration, commercial use, installation, removal or reinstallation. This warranty is restricted to normal consumer use within the United States and Canada. To obtain warranty service, contact our customer service department at **866-389-8827**, 8 a.m. - 8 p.m., EST, Monday - Sunday. You may also contact us at ascs@lowes.com.

REPLACEMENT PARTS LIST

For replacement parts, call our customer service department at **866-389-8827**, 8 a.m. - 8 p.m., EST, Monday - Sunday. You may also contact us at ascs@lowes.com.

PART	DESCRIPTION	PART #	COVERED UNDER WARRANTY
	Hardware Box	79074-6SB2Z000HW2LA	NO