



**ARIENS**



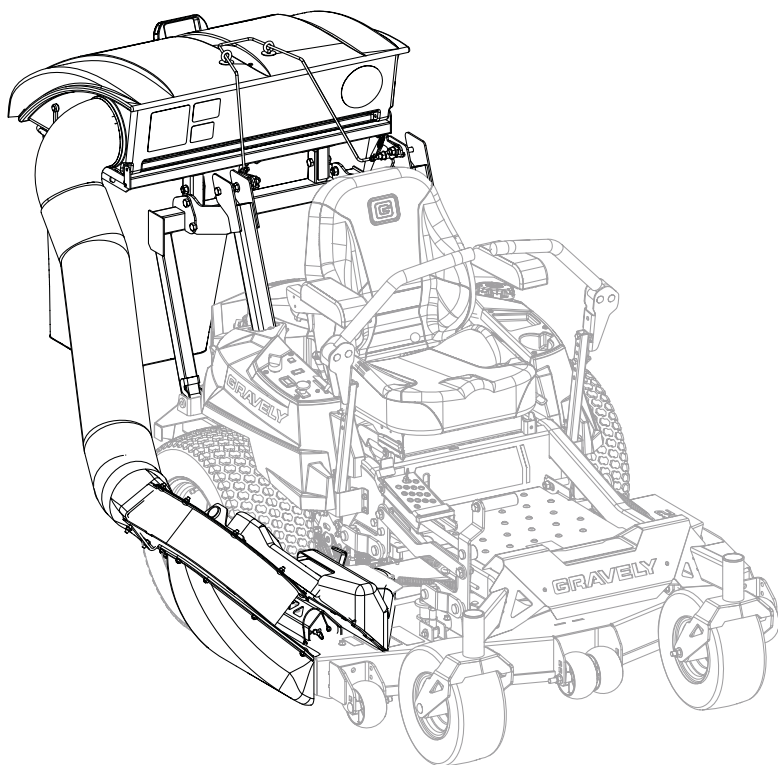
**GRAVELY**

# 2-Bag Bagger

Operator's Manual  
Manuel de l'utilisateur

## Model

891008 – 2-Bag Bagger  
(SN 002000 +)



**EN** ENGLISH

**FR** FRANÇAIS

05250900 • 9/18

Printed in USA

# TABLE OF CONTENTS

---

<b>WELCOME</b> .....	<b>1</b>
Register Your Product! .....	1
<b>SAFETY</b> .....	<b>2</b>
Practices & Laws .....	2
Emission Control System .....	2
Required Operator Training .....	2
Safety Alert Symbol .....	2
Signal Words .....	2
Safety Decals .....	3
Safety Rules .....	4
<b>ASSEMBLY</b> .....	<b>9</b>
Removal .....	10
Install Bagger .....	10
Install Hose Adapter .....	12
Install Blower Assembly .....	12
Install Hex-Belt .....	14
Install Belt Covers .....	14
Install Hose .....	15
Install Bags .....	15
Install Counterweights .....	15
Install Rope .....	15
<b>OPERATION</b> .....	<b>16</b>
Before Each Use .....	16
Bagging .....	16
Unclog Bagger .....	17
Operating Tips .....	17
<b>REMOVAL</b> .....	<b>17</b>
<b>MAINTENANCE</b> .....	<b>18</b>
Maintenance Schedule .....	18
<b>STORAGE</b> .....	<b>18</b>
<b>INSTALLATION KITS</b> .....	<b>19</b>
<b>TROUBLESHOOTING</b> .....	<b>19</b>
<b>SPECIFICATIONS</b> .....	<b>19</b>
<b>WARRANTY</b> .....	<b>20</b>

---

# WELCOME

Congratulations on your purchase and welcome to the Ariens Company family! Every machine in our lineup is designed for long-lasting and unsurpassed performance. We are confident your machine will be part of your family for many years to come.

## Have Questions or Need Assistance?

[www.ariens.com](http://www.ariens.com)

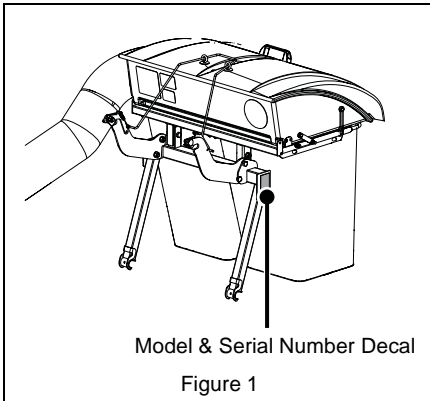
[www.gravely.com](http://www.gravely.com)

A parts manual for your unit is available for free download or purchase at [www.ariens.com](http://www.ariens.com) or [www.gravely.com](http://www.gravely.com).

## REGISTER YOUR PRODUCT!

It is extremely important to register your product at time of purchase. Product registration activates the warranty and establishes a communication link from the Ariens Company.

Locate the model and serial number decal on your unit and register those numbers online at [www.ariens.com](http://www.ariens.com) or [www.gravely.com](http://www.gravely.com). See Figure 1 for decal location. Be aware that the original selling dealer may have already completed product registration on behalf of the original purchaser.



Model & Serial Number Decal

Figure 1

Record model number here.

Record serial number here.

## MANUALS

Before operating or servicing the unit, carefully and completely read the manuals provided with the unit. They contain safety instructions and important information about unit controls.

The engine on this unit is covered by a separate manual. Refer to the engine manual for engine service recommendations. Contact the engine manufacturer for a replacement manual if necessary.

Your dealer must review important information in this manual with you before or upon delivery of the unit. It is your responsibility to read and understand all safety precautions and instructions in the manuals. If you do not understand or have difficulty following the instructions, contact your Ariens or Gravely dealer for assistance. To locate your nearest Ariens or Gravely dealer, go to [www.ariens.com](http://www.ariens.com) or [www.gravely.com](http://www.gravely.com).

## DISCLAIMER

Ariens Company reserves the right to discontinue, make changes to, and add improvements upon its products at any time without public notice or obligation. The descriptions and specifications contained in this manual were in effect at printing. Equipment described in this manual may be optional. Some illustrations may not be applicable to your unit.

## SAFETY

Read these safety rules and follow them closely. Failure to follow these rules could lead to loss of control of unit, severe personal injury or death to you or bystanders, or result in damage to property or the machine.

### PRACTICES & LAWS

Practice usual and customary safe working precautions. Learn applicable rules and laws in your area. Always follow the practices set forth in this manual.

### EMISSION CONTROL SYSTEM

This equipment and/or its engine may include exhaust and evaporative emissions control system components required to meet U.S. Environmental Protection Agency (EPA) and/or California Air Resources Board (CARB) regulations. Tampering with emission controls and components by unauthorized personnel may result in severe fines or penalties. Emission controls and components can only be adjusted by an Ariens Company dealer or an authorized engine manufacturer's service center. Contact your Ariens Company Equipment Retailer concerning emission controls and component questions.

### REQUIRED OPERATOR TRAINING



Read and understand the Operator's Manual and decals on the unit. This information is for your safety and the proper use of your equipment. Failure to follow these

instructions and warnings may cause death or serious injury. If you have purchased this product from a dealer, the dealer can provide you with training.

Familiarize yourself and any other operators with all controls and the safe use of the features of this unit. If you loan, rent or sell this product to others, provide them with all manuals.

If you have any questions, please call our customer support line at 920-756-4688. Alternatively, contact us at [www.ariens.com](http://www.ariens.com) or [www.gravelly.com](http://www.gravelly.com). Do not use this equipment if, after reading the Operator's Manual and the on-board decals, you have any questions about the safe use of this product.



**WARNING: AVOID INJURY.** This cutting machine is capable of amputating hands and feet and throwing objects. Failure to observe the safety instructions in the manuals and on decals could result in serious injury or death.

### SAFETY ALERT SYMBOL



This is the safety alert symbol. It means:

- **ATTENTION!**
- **YOUR SAFETY IS INVOLVED!**

When you see this symbol:

- **BECOME ALERT!**
- **OBEY THE MESSAGE!**

### SIGNAL WORDS

The safety alert symbol above and signal words below are used on decals and in this manual. Read and understand all safety messages.

#### 1. Danger



**DANGER:** Indicates an **IMMINENTLY HAZARDOUS SITUATION!** If not avoided, **WILL RESULT** in death or serious injury.

#### 2. Warning



**WARNING:** Indicates a **POTENTIALLY HAZARDOUS SITUATION!** If not avoided, **COULD RESULT** in death or serious injury.

#### 3. Caution



**CAUTION:** Indicates a **POTENTIALLY HAZARDOUS SITUATION!** If not avoided, **MAY RESULT** in minor or moderate injury. It may also be used to alert against unsafe practices.

#### 4. Notice

**NOTICE:** Indicates information or procedures that are considered important but not hazard related. If not avoided property damage could result.

## 5. Important

**IMPORTANT:** Indicates general reference information worthy of special attention.

### SAFETY DECALS

The safety decals on your machine are visual reminders of the important safety information in this manual. All messages on your unit must be fully understood and carefully followed. Safety decals on the machine are explained below.

ALWAYS replace missing or damaged safety decals. Replacement decal part numbers are found in the parts manual for your machine and may be ordered from your dealer.

See Figure 2 for safety decal locations.

### Safety Decal Locations

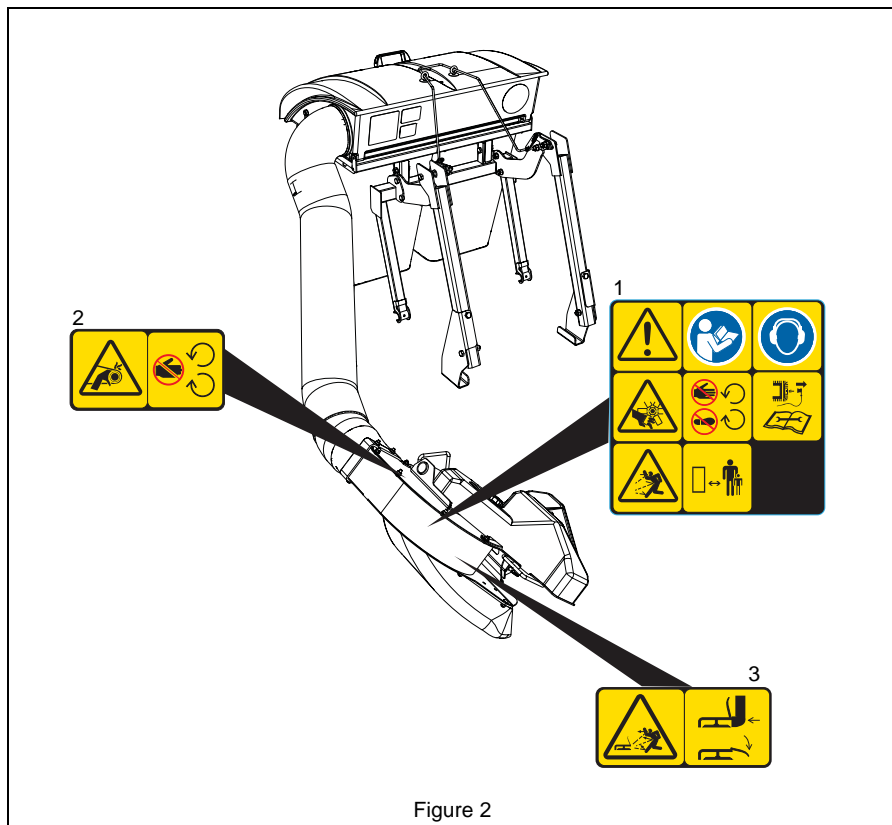


Figure 2

## Safety Decal Descriptions

### 1. DANGER



**DANGER!**



Read and understand the operator's manual before operating unit.



**ALWAYS** wear adequate hearing protection.



**ROTATING FAN!** Stop engine and remove key before clearing.

Wait for all moving parts to stop.



Keep feet and hands away from all rotating or moving parts.



Disconnect spark plug wires before operation.



**Discharge Hazard - NEVER** direct discharge toward people, pets or property. Thrown objects can cause injury or damage.



Keep children and others away from unit while operating.

### 2. AMPUTATION HAZARD



To avoid amputation hazard **DO NOT** put hands near moving belts.

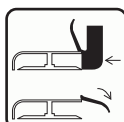


Keep hands away from all rotating or moving parts.

### 3. DANGER!



**Discharge Hazard - NEVER** operate unit without discharge chute in operating position. Thrown objects can cause injury or damage.



**DO NOT** operate mower unless all guards are in operating position or bagger is attached.

## SAFETY RULES

The following safety instructions are based on the B71.1 specifications of the American National Standards Institute and ISO 5395 in effect at the time of production.

### Training

Read, understand, and follow all instructions on the machine and in the manual(s) before starting.

Be sure the area is clear of bystanders and pets before operating. Stop machine if anyone enters the area.

Improper use of power equipment can cause serious permanent injury or death to the operator or a bystander.

Understand:

- How to operate all controls
- The functions of all controls
- How to STOP in an emergency
- Braking and steering characteristics
- Turning radius and clearances

If the operator or the mechanic cannot read the manual, it is the owner's responsibility to explain it to them.

**ALWAYS** train any inexperienced operators and require them to read and understand all manuals and decals.

Only allow responsible adults, who are familiar with the instructions, to operate this machine.
Only the operator can prevent and is responsible for accidents or injuries occurring to themselves, other people or property.

### Operator Age

DO NOT allow children under the age of 18 to operate any outdoor power equipment.
Local regulations may restrict the age of the operator.
Data indicates operators age 60 years and above are involved in a large percentage of riding mower-related injuries.  These operators should evaluate their ability to operate the riding mower safely enough to protect themselves and others from serious injury.

### Children

Tragic accidents can occur if the operator is not alert to the presence of children. Children are often attracted to the machine and the mowing activity. NEVER assume that children will remain where you last saw them.
Be alert and turn machine off if a child enters the area.
Before and while backing, look behind and down for small children.
NEVER carry children, even with the blade(s) shut off. They may fall off and be seriously injured or interfere with safe machine operation. Children who have been given rides in the past may suddenly appear in the mowing area for another ride and be run over or backed over by the machine.
NEVER allow children to operate the machine.
Use extreme care when approaching blind corners, shrubs, trees or other objects that may block your view of a child.
Keep children out of the mowing area and in the watchful care of a responsible adult other than the operator.

### Personal Protection

DO NOT wear loose clothing or jewelry and tie back hair that may get caught in rotating parts.
Wear adequate outer garments.
NEVER wear open sandals or canvas shoes during operation. Wear adequate safety gear, protective gloves and footwear.
Wear proper footwear to improve footing on slippery surfaces.
ALWAYS wear eye and ear protection when operating machine.

### Before Operating

Keep all nuts and bolts tight to be sure the equipment is in safe working condition.
Maintain the machine to be in compliance with the maintenance schedule.
Clean grass and debris from unit, especially from around muffler and engine, to help prevent fires.
Check parking brake operation frequently. Adjust and service as required.
Inspect unit before each use for missing or damaged decals and shields, correctly operating safety interlock system, and deterioration of grass catchers. Replace or repair as needed.
Ensure Safety Interlock System is functioning properly. DO NOT operate unit if safety interlock is damaged or disabled.
Start and operate unit only when seated in operator's position. Steering control levers must be in neutral, PTO disengaged and parking brake set when starting engine.
NEVER interfere with the intended function of a safety device or reduce the protection provided by a safety device. Check their proper operation regularly.
Keep machine free of grass, leaves or other debris build-up. Clean up oil or fuel spillage and remove any fuel-soaked debris.

### Operation

Be sure the area is clear of bystanders before operating. Stop machine if anyone enters the area.
NEVER operate machine in a closed or poorly-ventilated area.
ALWAYS maintain unit in safe operating condition. Damaged or worn out muffler can cause fire or explosion.

<p>This product is equipped with an internal combustion type engine. DO NOT use unit on or near any unimproved, forest-covered or brush-covered land unless exhaust system is equipped with a spark arrester meeting applicable local, state or federal laws. A spark arrester, if it is used, must be maintained in effective working order by operator.</p>	<p>NEVER leave a running machine unattended. ALWAYS turn off blade(s), set parking brake, stop engine and remove key before dismounting.</p>
<p>DO NOT operate machine while feeling tired, ill or under the influence of alcohol or other drugs.</p>	<p>Disengage blade(s) when not mowing. Shut off engine and wait for all parts to come to a complete stop before cleaning the machine, removing the grass catcher, or unclogging the discharge guard.</p>
<p>DO NOT put hands or feet near rotating parts or under the machine. Keep clear of the discharge opening at all times.</p>	<p>Know the weight of loads. Limit loads to those you can safely control and the unit can safely handle.</p>
<p>DO NOT touch parts which are hot. Allow parts to cool.</p>	<p><b>Operating Conditions</b></p>
<p>DO NOT operate machine without the entire grass catcher, discharge guard or other safety devices in place and working.</p>	<p>Lightning can cause severe injury or death. If lightning is seen or thunder is heard in the area, do not operate the machine, seek shelter.</p>
<p>ALWAYS keep hands and feet away from all pinch points.</p>	<p>ALWAYS check overhead and side clearances carefully before operation.</p>
<p>Avoid slippery surfaces. ALWAYS be sure of your footing.</p>	<p>Watch for traffic when operating near or crossing roadways.</p>
<p>NEVER carry passengers.</p>	<p>Clear the area of objects such as rocks, wire, toys, etc., which could be thrown by the blades.</p>
<p>NEVER direct discharged material toward anyone. Avoid discharging material against a wall or obstruction. Material may ricochet back toward the operator. Stop the blade(s) when crossing gravel surfaces.</p>	<p>Check for weak spots on docks, ramps or floors. Avoid uneven work areas and rough terrain. Stay alert for hidden hazards or traffic.</p>
<p>NEVER engage PTO when attachment, including mower blades, is not in use. ALWAYS turn off power to attachment when not in active use such as traveling or crossing driveways.</p>	<p>Use care when approaching blind corners, shrubs, trees or other objects that may obscure vision.</p>
<p>ALWAYS disengage PTO, stop unit and engine, remove key, engage parking brake and allow moving parts to stop before leaving operator's position.</p>	<p>Dust, smoke, fog, etc. can reduce vision and cause an accident.</p>
<p>NEVER engage PTO while raising the attachment, including mower blades, or when attachment is in the raised position.</p>	<p>Operate machine only in daylight or good artificial light.</p>
<p>Keep safety devices or guards in place and functioning properly. NEVER modify or remove safety devices.</p>	<p><b>Slope Operation</b></p>
<p>DO NOT mow in reverse unless absolutely necessary. ALWAYS look down and behind before and while backing.</p>	<p>Slopes are a major factor related to loss of control and tip-over accidents, which can result in severe injury or death. Operation on all slopes requires extra caution. If you cannot back up the slope or if you feel uneasy on it, DO NOT mow it.</p>
<p>Stop engine before removing grass catcher or unclogging chute.</p>	<p>DO NOT operate on slopes of more than 15°.</p>
<p>Slow down before turning.</p>	<p>Mow up and down slopes, not across.</p>
<p>If you strike a foreign object, stop and inspect the machine. Repair, if necessary, before restarting.</p>	<p>ALWAYS keep the machine in gear when going down slopes. DO NOT shift to neutral and coast downhill.</p>
	<p>Watch for holes, ruts, bumps, rocks, or other hidden objects. Uneven terrain could overturn the machine. Tall grass can hide obstacles.</p>



DO NOT mow on moist or wet grass. Tires may lose traction causing a loss of control.
Use extra care while operating machine with grass catchers or other attachments; they can affect the stability of the machine. DO NOT use on steep slopes.
Keep all movements on the slope <i>slow</i> and <i>gradual</i> . DO NOT make sudden changes in speed or direction, which could cause the machine to roll over.
Avoid starting, stopping, or turning on a slope. If the tires lose traction, disengage the blade(s) and proceed slowly straight down the slope.
Operation on slopes may lead to loss of steering control. When operating on slopes be prepared to react to an emergency situation: <ul style="list-style-type: none"> <li>• Return steering levers to neutral position.</li> <li>• Immediately set parking brake.</li> <li>• Turn off PTO and engine.</li> </ul>
DO NOT try to stabilize the machine by putting your foot on the ground.
DO NOT park on slopes unless necessary. When parking on slope ALWAYS chock or block wheels. ALWAYS set parking brake.
Choose a low ground speed so you will not have to stop or shift while on a slope.
DO NOT mow near drop-offs, ditches, or embankments. The machine could suddenly roll over if a wheel goes over the edge or if the edge caves in.
DO NOT bypass transmission or allow transmission to free-wheel when on a slope.

## Fuel

To avoid personal injury or property damage, use extreme care in handling gasoline. Gasoline is extremely flammable and the vapors are explosive.
Ethanol blends must not exceed E10. Higher ethanol content may cause your machine to run hotter and damage your engine.
Replace fuel cap securely and clean up spilled fuel before starting engine.
Extinguish all cigarettes, cigars, pipes and other sources of ignition.
Use only an approved gasoline container.
NEVER store the machine or fuel container where there is an open flame, spark or pilot light such as on a water or space heater or other appliances.

NEVER fill containers inside a vehicle or on a truck or trailer bed with a plastic liner. ALWAYS place containers on the ground away from your vehicle before filling.
NEVER fuel the machine indoors.
NEVER remove gas cap or add fuel with the engine running. Allow engine to cool before fueling.
Fuel is highly flammable and its vapors are explosive. Handle with care. Use only an approved gasoline container with an appropriately-sized dispensing spout. NO smoking, NO sparks, NO flames.
Remove gas-powered equipment from the trailer and refuel it on the ground. If this is not possible, then refuel such equipment with a portable container, rather than from a gasoline dispenser nozzle.
Keep the nozzle in contact with the rim of the fuel tank or container opening at all times until the fueling is complete. DO NOT use a nozzle lock-open device.
NEVER overfill fuel tank. Replace gas cap and tighten securely.
If fuel is spilled on clothing, change clothing immediately.

## Towing

Follow the manufacturer's recommendations for weight limits for towed equipment and towing on slopes.
NEVER allow children or others in or on towed equipment.
Tow only with a machine that has a hitch designed for towing. DO NOT attach towed equipment except at the hitch point.
On slopes, the weight of the towed equipment may cause loss of traction and loss of control.
Travel slowly and allow extra distance to stop.

## Accessories

Follow the manufacturer's recommendation for wheel weights or counterweights
Check grass catcher components and the discharge guard frequently and replace with the manufacturer's recommended parts, when necessary.
Use only Ariens Company-recommended attachments that are appropriate to your use and can be used safely in your application.

<b>Batteries</b>	Allow engine to cool before servicing.
Avoid electric shock. Objects contacting both battery terminals at the same time may result in injury and unit damage. DO NOT reverse battery connections.	Moving parts can cut or amputate fingers or a hand. On multiblade mowers, rotation of one blade will cause all blades to rotate.
Reverse connections may result in sparks which can cause serious injury. ALWAYS connect positive (+) lead of charger to positive (+) terminal, and negative (-) lead to negative (-) terminal.	NEVER weld or straighten mower blades.
ALWAYS disconnect negative (-) cable FIRST and positive (+) cable SECOND. ALWAYS connect positive (+) cable FIRST, and negative (-) cable SECOND.	NEVER make adjustments or repairs with the engine running.
Explosive gases from battery can cause death or serious injury. Poisonous battery fluid contains sulfuric acid and its contact with skin, eyes or clothing can cause severe chemical burns.	Mower blades are sharp. Wrap the blade or wear gloves, and use extra caution when servicing them.
No flames, No sparks, No smoking near battery.	ALWAYS keep body and hands away from pin holes or nozzles which eject hydraulic fluid under pressure.
ALWAYS wear safety glasses and protective gear near battery. Use insulated tools.	<b>Transporting Unit</b>
ALWAYS keep batteries out of reach of children.	Use extra care when loading or unloading the machine into a trailer or truck.
Battery posts, terminals and related accessories contain lead and lead compounds, chemicals known to the state of California to cause cancer and reproductive harm. Wash hands after handling.	Secure unit chassis to transport vehicle. NEVER secure from rods or linkages that could be damaged.
<b>Service</b>	DO NOT transport machine while engine is running.
The use of non-genuine replacement parts or accessories could adversely affect machine operation and safety.	ALWAYS turn off power to attachment and shut off fuel when transporting unit.
Do not change engine governor setting or overspeed the engine.	<b>Storage</b>
Maintain or replace safety and instruction labels as necessary.	NEVER store unit with fuel in fuel tank inside a building where any ignition sources are present.
Keep unit free of debris. Clean up oil or fuel spills.	Keep machine free of grass, leaves or other debris build-up. Clean up oil or fuel spillage and remove any fuel-soaked debris. Allow machine to cool before storing.
ALWAYS block wheels and know all jack stands are strong and secure and will hold weight of unit during maintenance.	For extended storage, close fuel shut off valve and clean unit thoroughly. See engine manual for proper storage.
Release any pneumatic or hydraulic pressure from components slowly.	
NEVER attempt to make any adjustments to unit while engine is running (except where specifically recommended). Stop engine, remove key and spark plug wire and wait for all moving parts to stop before servicing or cleaning.	
Lower cutting deck unless a positive mechanical lock is used.	

## ASSEMBLY



**WARNING: AVOID INJURY.**  
Read and understand entire  
*Safety* section before  
proceeding.

Remove contents from carton carefully. Place bagger hood and frame parts on cardboard to help prevent scratches.

### Package Contents:

Check the contents of your kit for the parts listed below. See Figure 3.

Item	Description	Qty	Part Number
1	Bagger Assembly	1	05138400
2	Bagger Post	1	05129751
3	Right Bagger Arm	1	N/A
4	Left Bagger Arm	1	N/A
5	Bagger Hose	1	04222900
6	Blower Assembly	1	69147200
7	1/2"-13 Top Lock Flange Nut	8	06500907
8	1/2"-13 x 4 1/2" Hex Bolt	2	05901736
9	1/2" x 3/4" Spacer	2	09357700
10	1/2"-13 Spin Lock Flange Nut	2	06500928
11	33/64" x 7/8" Flat Steel Washer	2	06436600
12	Hose Adapter	1	00452200
13	5/16"-18 Top-Lock Flange Nut	4	06500904
14	5/16"-18 x 1" Round Head Square Neck Bolt	4	06200237
15	1/2"-13 x 2 1/4" Hex Bolt	2	05901835
16	1/2"-13 x 1" Hex Bolt	4	05901715
17	Blower Belt Cover	1	05146400
18	Clamping Knob	2	07534800
19	3/8" x 1 1/2" x 1/16" Flat Steel Washer	2	06401028
20	Bracket Assembly*	1	N/A
21	1/4"-20 Top Lock Flange Nut*	1	06500903

Item	Description	Qty	Part Number
22	1/4"-20 x 3/4" Round Head Square Neck Bolt*	1	06200307
23	1/4"-20 x 3/4" Hex Bolt*	1	05901716
24	Template*	1	05148351
25	Counter Weight Plate*	6	04422451
26	1/2"-13 x 4" Hex Bolt*	2	05901734
27	7/32" x 1" Flat Steel Washer*	2	06401015
28	1/2"-13 Nylon Locking Flange Nut*	2	06500810
29	Transmission Disconnect Decal*	2	N/A

\*See Bagger Attachment Kit Instruction Sheet

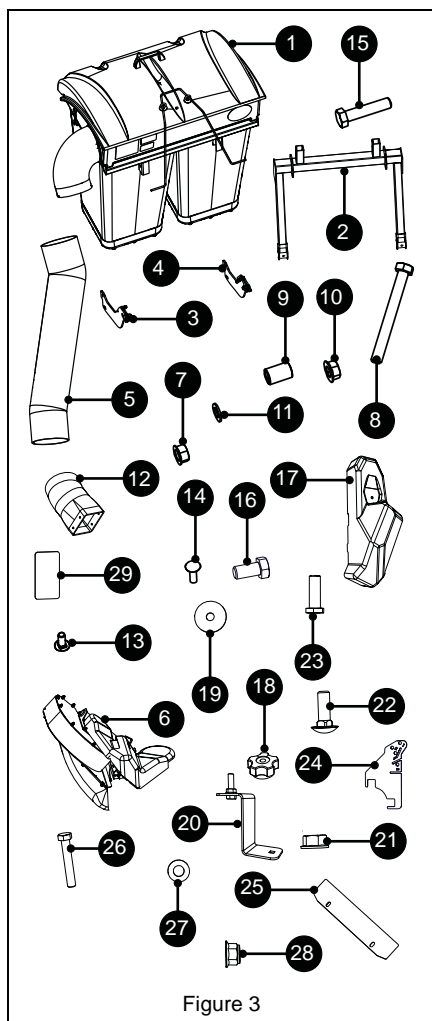


Figure 3

**IMPORTANT :** Bagger requires a separate installation kit based on the deck size. See *Installation Kits* on page 19.

## REMOVAL

1. Stop engine, remove key, wait for all moving parts to stop and for hot parts to cool.
2. Disconnect spark plug wires.
3. Remove four screws retaining pocket covers and remove covers. Discard covers; reinstall screws for better appearance. See Figure 4.

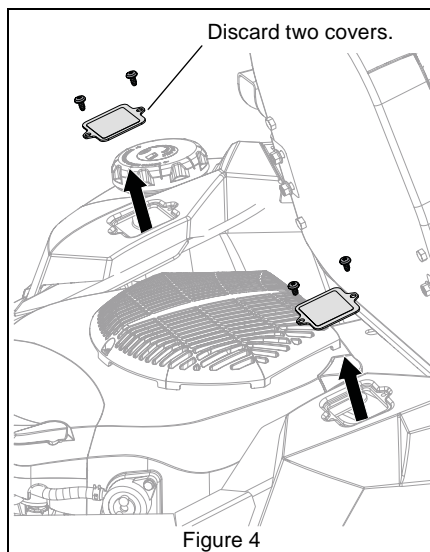


Figure 4

## INSTALL BAGGER

**IMPORTANT:** Install bagger attachment kit (79107800) if unit does not have a ROPS. See *(ROPS Units Only)* on page 10.

### (ROPS Units Only)

See Figure 5.

1. Install hex bolt (Item 8) into the right rollover protection structure (ROPS) bracket with a spin lock flange nut (Item 10) in the center of the bracket.
2. Secure hex bolt with a flat steel washer (Item 11), spacer (Item 9) and top lock flange nut (Item 7).

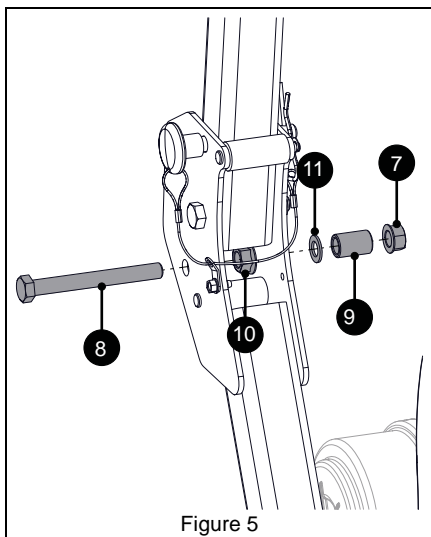


Figure 5

3. Repeat steps 1 – 2 on left ROPS bracket.

### Bagger Supports

See Figure 6.

1. Install hex bolt (Item 8) into the right bagger support with a spin lock flange nut (Item 10) in the center of the bracket.
2. Secure hex bolt with a flat steel washer (Item 11), spacer (Item 9) and top lock flange nut (Item 7).
3. Repeat steps 1 – 2 on left bagger support.

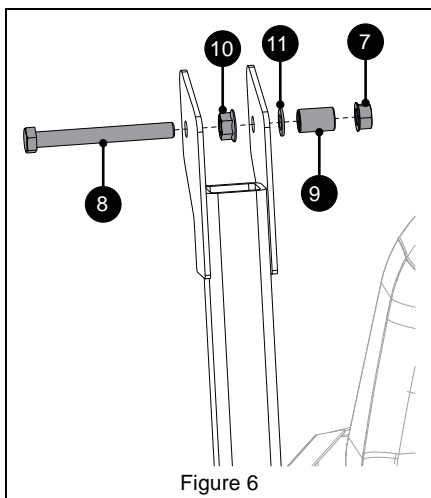


Figure 6

4. Install left bagger arm (Item 4) onto bagger post (Item 2) with two hex bolts (Item 16) and two top-lock flange nuts (Item 7). Do not tighten. Repeat on right bagger arm (Item 3). See Figure 7.

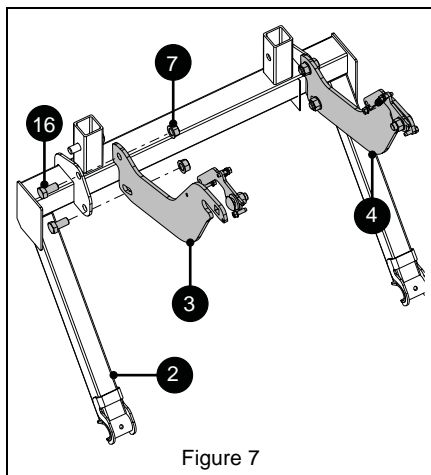


Figure 7

5. Position bagger post ends onto bagger mounts. See Figure 8.

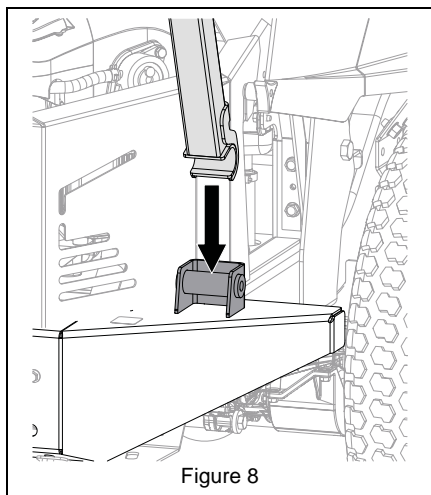


Figure 8

6. Ensure bagger posts are securely engaged in bagger mounts. Lift and rotate bagger post until bagger arms lock onto the bagger support bolts. Ensure both sides are latched. See Figure 9.



**WARNING: AVOID INJURY.**  
Ensure that both left and right latches are securely locked in position.

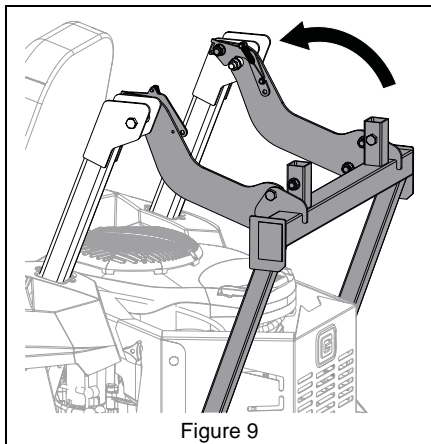


Figure 9

7. Tighten all hardware.
8. Remove bags from bagger. Install bagger frame to bagger post with two 1/2" x 2 1/4" hex bolts (Item 15) and two 1/2" top-lock flange nuts (Item 7). See Figure 10.

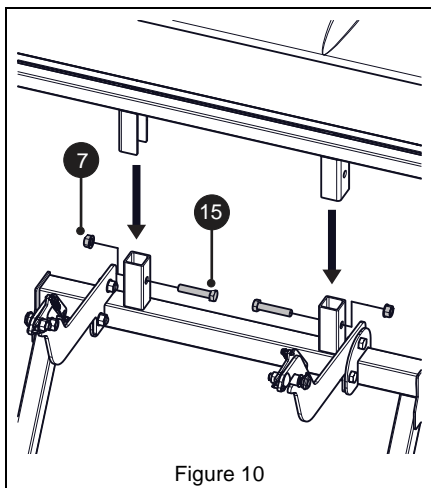


Figure 10

## INSTALL HOSE ADAPTER

1. Install hose adapter (Item 12) and secure with four 5/16" x 1" round head square neck bolts (Item 14) and four 5/16" top-lock flange nuts (Item 13). Bolts are installed from the inside with the nuts on the outside. See Figure 11.

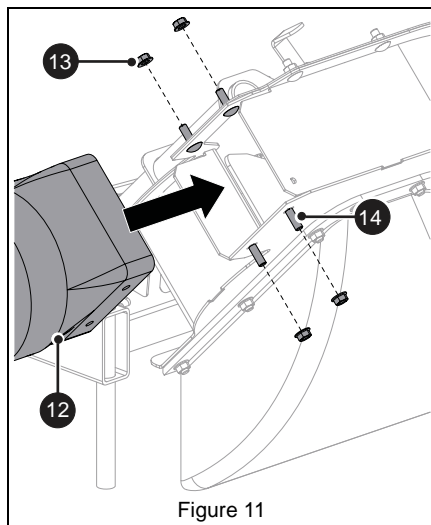


Figure 11

## INSTALL BLOWER ASSEMBLY



**CAUTION:** Ensure blower assembly covers the discharge chute opening.

1. Remove and retain 3/8" x 2" hex bolt retaining discharge chute assembly. Remove discharge chute. Retain all parts for operation without bagger. See Figure 12.

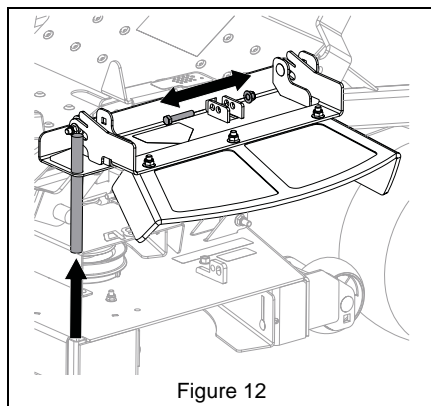


Figure 12

2. Remove and retain hardware securing belt cover to mower deck. Remove belt cover and retain all parts for operation without bagger. See Figure 13.

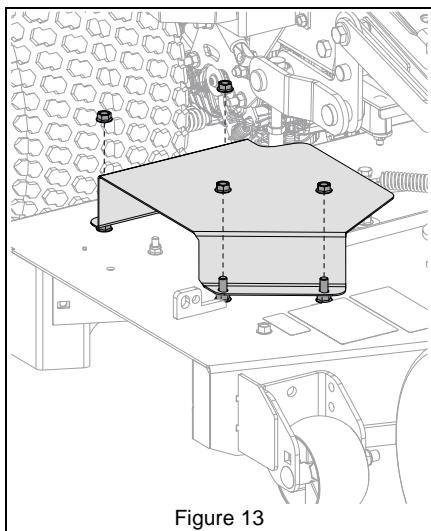


Figure 13

**IMPORTANT :** Bagger is shipped with mounting plate in the 60" deck position. The mounting location varies depending on deck size.

3. For 44, 48 and 52" decks, remove four hex nuts and round head square neck bolts securing mounting plate to blower assembly. Reinstall hardware in the other mounting holes. See Figure 14 for correct mounting position.

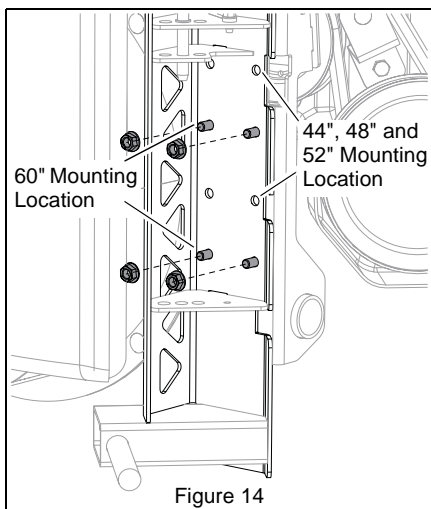


Figure 14

4. For first use, refer to bagger Instruction Sheet for pulley and support bracket instructions.
5. Install blower assembly mounting pin through mounting tube. See Figure 15.

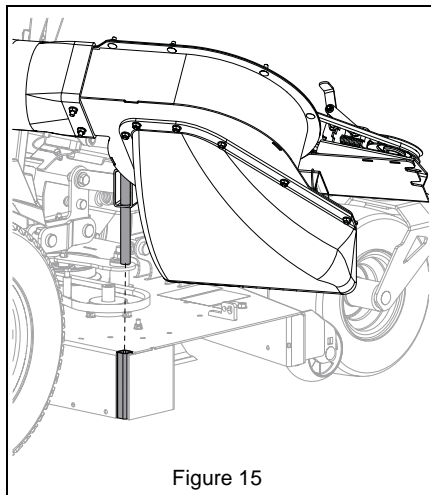


Figure 15

See Figure 16.

6. Position blower assembly at discharge chute opening.
7. Install pin through mower deck bracket.

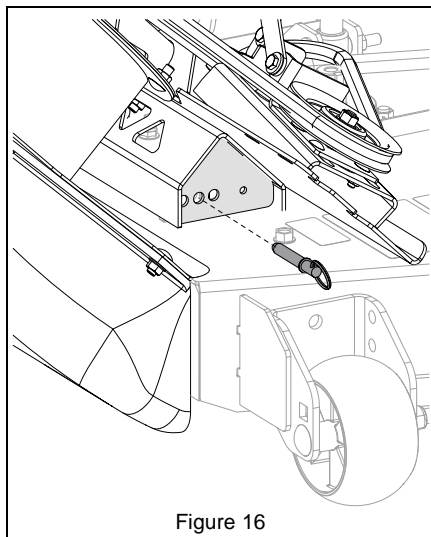


Figure 16

## INSTALL HEX-BELT

1. Place blower belt tensioner in released position. See Figure 17.

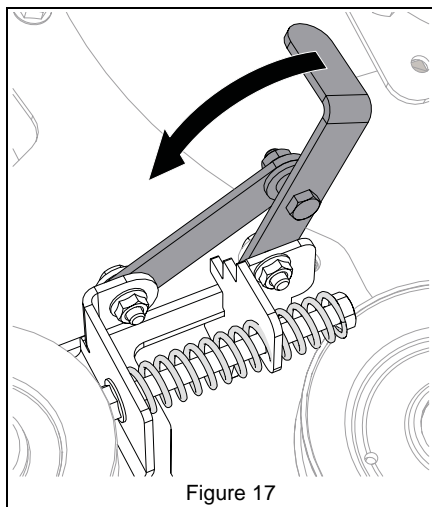


Figure 17

See Figure 18.

2. Install hex-belt around split pulley on blower assembly (Item 6) so that belt contacts idler pulleys.
3. Install hex-belt around double pulley.

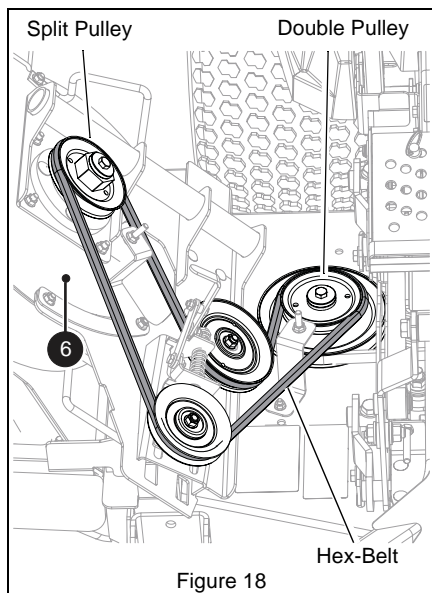


Figure 18

Belt must be correctly adjusted for blower to operate properly.

4. Return belt tensioner to the operating position.

## INSTALL BELT COVERS

1. Secure belt cover to deck using one 1 1/2" washer and one clamping knob. See Figure 19.

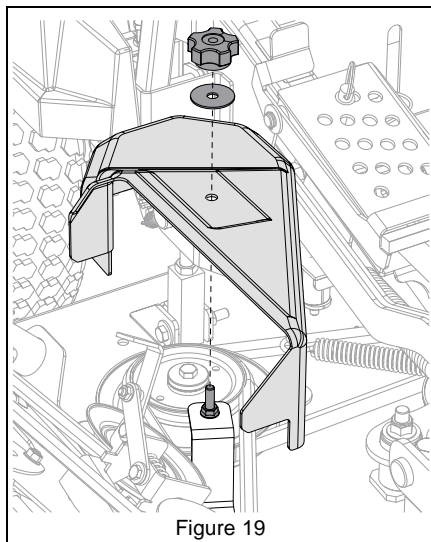


Figure 19

2. Install blower belt cover (item 17) to blower assembly using one 1 1/2" washer (item 19) and one clamping knob (item 18). See Figure 20.

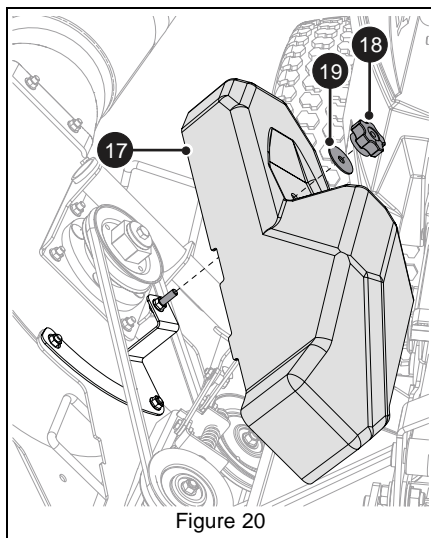


Figure 20



## INSTALL HOSE

See Figure 21.

1. Place mower deck in lowest position.
2. Install one end of hose (Item 5) onto hose adapter.
3. Install opposite end of hose onto bagger assembly (Item 1).

**NOTICE:** Hose must remain secured at all mower deck heights. Refer to bagger kit Instruction Sheet for hose clamp installation instructions.

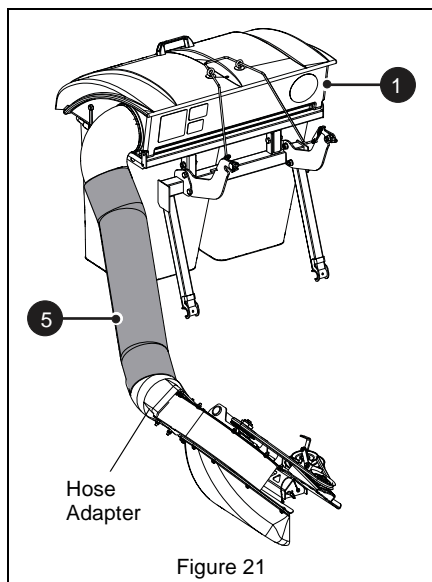


Figure 21

## INSTALL BAGS

1. Release bagger cover latch straps.
2. Lift bagger cover up to access bagger frame.
3. Install grass bags. The smooth heat-resistance surfaces of the mesh bags must face the engine. See Figure 22.

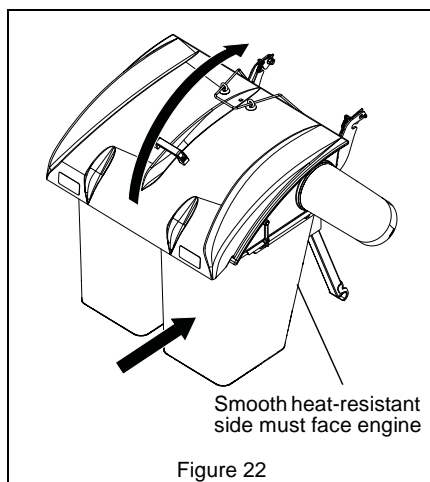


Figure 22

4. Close cover and connect rubber straps.

## INSTALL COUNTERWEIGHTS

Refer to bagger kit Instruction sheet for counterweight installation instructions.

## INSTALL ROPE

1. Route one end of rope through hole in left bagger arm and tie a knot to secure. See Figure 23.

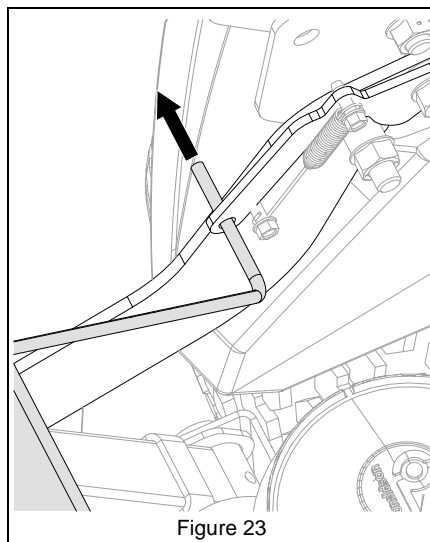


Figure 23

2. Route the untied end of rope through the two eye bolts. See Figure 24.

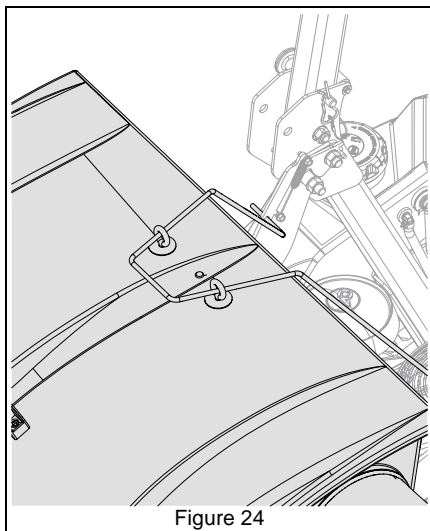


Figure 24

3. Route the rope through the right bagger arm eye and tie a knot. See Figure 25.

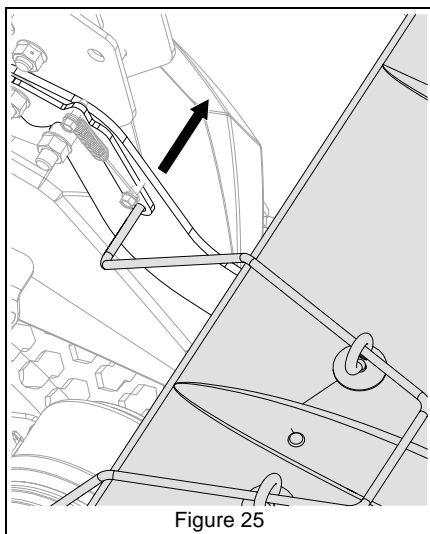


Figure 25

**NOTICE:** Installation kit must be installed with bagger prior to operation. See *Installation Kits* on page 19.

4. Reconnect spark plug wires.

## OPERATION



**WARNING:** AVOID INJURY. Read and understand entire *Safety* section before proceeding.



**WARNING:** Counterweights **MUST** be installed before operating unit with bagger. See *Installation Kits* on page 19.

## BEFORE EACH USE

1. Check bagger parts for wear damage. Replace **ONLY** with Ariens or Gravely original service parts before operating.
2. Ensure counterweights are installed.
3. Ensure all hardware is tight.

**IMPORTANT:** Check belt-cover hardware often. Tighten as needed.

4. Remove any grass buildup from bagger parts.
5. Ensure hose is installed correctly.
6. Ensure mesh bags are installed and the bagger cover is closed and securely latched.

## BAGGING

### Starting

1. Start engine and engage PTO according to unit Operator's Manual.
2. Set throttle to full speed.
3. Choose a slow ground speed.

### Stopping

1. Disengage PTO.
2. Stop unit according to unit Operator's manual.



**WARNING:** Stop engine and remove key. **DO NOT** park on slopes.

## Emptying Mesh Bags

If bagger stops collecting grass clippings, mesh bags are likely full.

1. Disengage PTO, stop engine and remove ignition key. Wait for all moving parts to stop before leaving operator's position.
2. Empty the grass from each bag.
3. Clean out hose.
4. Close and latch cover.

## UNCLOG BAGGER



**WARNING: MOVING PARTS** can cut or amputate body parts. NEVER attempt to clear blower assembly while engine is running.

ALWAYS stop engine, remove key, and wait for moving parts to stop.

Sharp edges can cut. Movement of parts can cut off fingers or a hand. Wrap blade(s), wear sturdy gloves and use extreme caution when working near blades or impeller.



**WARNING: PINCH POINT!** Use extreme caution when unclogging blower assembly. Impeller can cut or pinch your hand, even when not in operation. DO NOT place hands in blower assembly.

If hose or blower assembly clogs, stop forward motion and allow unit to clear itself. If unit will not clear itself, unclog the hose and/or blower assembly manually as instructed below.

1. Stop engine and remove ignition key. Wait for all moving parts to stop.
2. Remove hose from bagger.
3. Remove hose from blower assembly.

**NOTICE:** Perform steps 4 and 5 if clog is in the hose:

4. Remove clogged grass.
5. Reinstall hose.

**NOTICE:** Perform steps 6 and 7 if clog is in blower assembly.



**WARNING:** Blades rotate when impeller rotates. Impeller rotates when blades rotate. Block blades to prevent rotation before proceeding.

6. Clear grass from blower assembly.
7. Reinstall hose.

## OPERATING TIPS

- Cut grass when it is dry.
- Cut grass in two passes when cutting thick, long, or wet grass. Make the first cut higher than desired. Make the second cut at desired height.
- Always use full throttle when bagging.

## REMOVAL



**CAUTION:** Bagger assembly will rotate backward when latch is released. Support bagger assembly before pulling rope to unlock latches.

1. Disconnect hose from bagger.
2. Support bagger and pull bagger rope. Lower bagger to ground and lift off bagger mounts. See Figure 26.

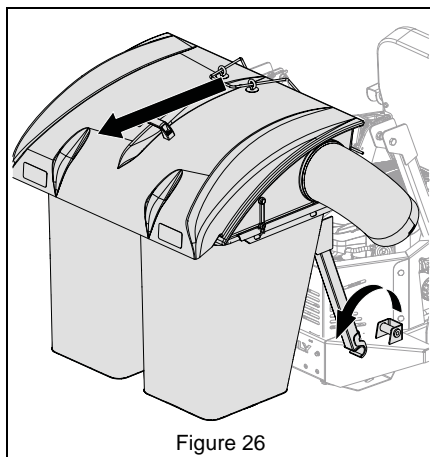


Figure 26

## MAINTENANCE



**WARNING: AVOID INJURY.**  
Read and understand entire  
*Safety* section before  
proceeding.

## STORAGE



**WARNING: AVOID INJURY.**  
Read and understand entire  
*Safety* section before  
proceeding.

## MAINTENANCE SCHEDULE

Service Performed	Each Use	Every 10 hrs.
Check Fasteners	•	
Inspect Bagger Parts	•	
Clean Unit	•	
Check Hex-Belt		•*

### Check Fasteners

**IMPORTANT:** Ensure all hardware is tight before use.

### Inspect Bagger Parts

Before each use, inspect bagger for holes, abrasions, or structural damage. Replace any worn or damaged parts.

### Clean Unit

Clean bagger before and after each use.

### Check Hex-Belt

Check hex-belt tension for wear after initial first two hours of use and every 10 hours thereafter. Replace if worn or deteriorated.

### Replace Hex-Belt

1. Remove belt covers.
2. Disengage belt tensioner.
3. Remove belt from pulleys.
4. Remove old hex-belt.
5. Route new hex-belt on pulleys. See *Install Hex-Belt* on page 14.
6. Engage belt tensioner.
7. Reinstall belt covers. See *Install Belt Covers* on page 14.



**WARNING: NEVER** spray unit with high-pressure water. DO NOT store unit outdoors.

**NOTICE:** The mesh bags can be washed with low pressure water.

- Clean plastic surfaces with sponge and mild detergent. Dry with a soft cloth.
- Remove debris from mesh bags before storing.
- Store in a clean, dry area.
- Ensure fasteners are properly tightened.
- Inspect moving parts for damage and wear.
- Protect rusted or chipped painted surfaces.

## INSTALLATION KITS

Part No.	Description
79106300	Bagger Attachment Kit - 44, 48"
79106500	Bagger Attachment Kit - 52"
79106600	Bagger Attachment Kit - 60"
79107800	Rear Bagger Mounting Kit

## TROUBLESHOOTING

Problem	Probable Cause	Correction
Bagger fails to pick up grass or leaves.	Bags are full.	Shut off engine, remove key, and empty bags.
	Bagger is clogged.	Unclog bagger. See <i>Unclog Bagger</i> on page 17.
Blower stops or slows.	Worn or damaged hex-belt.	Replace hex-belt. See <i>Replace Hex-Belt</i> on page 18.

## SPECIFICATIONS

<b>Model Number</b>	<b>89100800</b>
<b>Description</b>	2-Bag Bagger
Added Length to Unit – cm (in)	61.5 (24.2)
Bagger Capacity – m <sup>3</sup> (ft <sup>3</sup> )	.215 (7.6)
Added Width to Mower Deck – cm (in)	29.2 (11.5)



# ARIENS®

## Outdoor Power Equipment Limited Warranty

Ariens Company (Ariens) warrants to the **original purchaser** that Ariens brand products purchased on or after 3/16/2018 will be free from defects in material and workmanship for the time period noted in the chart below. Equipment put to personal use around a single household or residence is considered "Residential Use." Equipment put to any business use (agricultural, commercial, or industrial) or used at multiple locations is considered "Commercial Use." If any product is rented or leased, then the duration of these warranties shall be 90 days after the date of purchase.

An authorized Ariens dealer will repair any defect in material or workmanship, and repair or replace any defective part, subject to the conditions, limitations and exclusions set forth herein. Such repair or replacement will be free of charge (labor and parts) to the original purchaser; except as noted below. Pick-up and delivery are at the owner's expense.

The warranty code is found on the model and serial number identification label on the unit.

Warranty Code	Product Group	Warranty Period
AA	Serialized Attachments	1 Year.
HA	Zoom, Zoom-XL, IKON-X, and IKON-XL Mowers	3 Years Residential Use. 90 Days Commercial Use.
HB	Apex Mowers	3 Years Residential Use. 1 Year Commercial Use.
HD	LM-Series Walk-Behind Mowers	3 Years Residential Use. 90 Days Commercial Use.
PA	Log Splitters and 921-Series Brushes	3 Years Residential Use. 90 Days Commercial Use.
PB	926-Series Brushes	3 Years Residential Use. 1 Year Commercial Use.
SA	Professional Sno-Thro	3 Years Residential Use. 1 Year Commercial Use.
SB	Compact, Deluxe and Platinum Sno-Thro and Path-Pro	3 Years Residential Use. 90 Days Commercial Use.
SC	Sno-Tek	2 Years Residential Use. 90 Days Commercial Use.
SD	Deluxe and Platinum EFI Sno-Thro	3 Years Residential Use. 90 Days Commercial Use.
SE	920-Series Classic Sno-Thro	3 Years Residential Use. 90 Days Commercial Use.

### Special Extensions

The chart below details special **extensions** to warranty terms. Warranty terms are total time periods covered. If any product is rented or leased, there are no extensions to the 90-day warranty.

Warranty Code	Warranty Term Extension	Warranty Period	Detail
HA, HB	Mower Deck Shell and Main Frame	5 Years Limited Residential Use. No Commercial Warranty.	Years 1 – 3 parts and labor. Years 4 – 5 parts only.
SA	Cast Iron Auger Gear Case	5 Years Residential and Commercial Use.	
SB, SD	Cast Iron Auger Gear Case	5 Years Residential Use. 1 Year Commercial Use.	
SE	Aluminum Auger Gear Case	3 Years Residential Use. 90 Days Year Commercial Use.	

Exclusions and Limitations

The charts below detail special **exclusions and limitations** to this warranty.

Warranty Term Exclusions	Warranty Period
Air filters, auger paddles, brake arms, brake linings, brake shoes, brushes, cutters, fuel filters, headlights, knives, light bulbs, lubricants, mower blades, oil, oil filters, spark plugs, scraper blades, shear bolts and skid shoes.	Components are not covered under warranty.

Hydro-Gear Transaxle Limitation
See Hydro-Gear warranty. The warranty is administrated by Ariens Company.

Warranty Term Limitations	Warranty Period
Cloth, Plastic and Rubber Components. Mufflers, Tires, Belts and Cables.	2 Years Residential Use. No Commercial Warranty. Components are covered for manufacturer's defect only, not wear.

Exclusions – Items Not Covered by This Warranty

- Parts that are not genuine Ariens service parts are not covered by this warranty and may void the warranty if the parts result in premature wear or damage to the product.
- Damages resulting from the installation or use of any part, accessory, or attachment which is not approved by the Ariens Company for use with product(s) identified herein are not covered by this warranty.
- Any misuse, alteration, improper assembly, improper adjustment, neglect, or accident which requires repair is not covered by this warranty.
- Repairs or adjustments required due to failure to use fresh fuel or failure to properly prepare the unit for periods of non-use.
- **Use of gasoline blends exceeding 10% ethanol voids any and all warranties.**
- Products are designed to the specifications in the area that the product was originally distributed. Different areas may have significantly different legal and design requirements. This warranty is limited to the requirements in the area in which the unit was originally distributed. Ariens Company does not warrant this product to the requirements of any other area. Warranty service is limited to service within the area originally distributed.
- In countries other than the United States and Canada, contact the Ariens Company dealer for warranty policies that govern within your country. Rights may vary from country to country and within any one country.

Evaporative Emissions Control Warranty Exception

As required by the California Air Resources Board (CARB) and the US Environmental Protection Agency (EPA) the evaporative emissions control system is warranted to the ultimate purchaser, and any subsequent owner, for two years.

The CARB and EPA evaporative emissions control system warranty is described in a separate evaporative emission control warranty statement.

Pro-Rated Battery Warranty

Battery warranty is pro rated for one year and is based on the total cost for battery replacement. Units used for rental or lease have no exceptions to the 90-day warranty. Total battery reimbursement will not exceed 45.00 USD.

Months	% Coverage	Months	% Coverage	Months	% Coverage
1 – 3	100	6	58.3	9	33.3
4	75	7	50.0	10	25.0
5	66.6	8	41.6	11	16.6
				12	8.3

## Engines

The chart below details engine warranty information. Engine warranty terms may vary from the specific terms of this warranty. If inconsistent, the terms of the engine warranty shall apply to the engine and its component parts.

Engine Manufacturer	Detail
Ariens AX	Ariens- and Yamaha-branded engines are warranted by the manufacturer and the warranty is administered by Ariens Company. Refer to the engine manual for warranty statements.
Yamaha	
Briggs & Stratton, Kawasaki, Kohler, Subaru	Covered by the engine manufacturer's warranty. Refer to the engine manufacturer's warranty statements.

## Parts and Accessories

Service replacement parts and non-serialized accessories are warranted for 90 days from date of purchase. Parts and accessories must be installed by an authorized Ariens dealer to be covered. Labor is not included.

## Customer Responsibilities

**Register the product immediately at the time of sale.** If the dealer does not register the product, the customer must register the unit on-line at [www.ariens.com](http://www.ariens.com).

To obtain warranty service, the **original purchaser** must:

- Ensure that the maintenance and adjustments explained in the Operator's Manual are routinely completed.
- Promptly notify Ariens Company or an authorized Ariens service representative of the need for warranty service.
- Transport the product to and from the place of warranty service at owner's expense.
- Have the warranty service performed by an authorized Ariens service representative.

To find an authorized dealer use the dealer locator on our websites, or contact us by mail or phone.

Globally except Australia or New Zealand:	Australia:	New Zealand
Ariens Company 655 W. Ryan Street Brillion, WI 54110 Phone: (920) 756 - 4688 <a href="http://www.ariens.com">www.ariens.com</a>	Masport Australia Pty Ltd 27 Commercial Drive Dandenong South Victoria 3175 Australia Phone: 1300 366 225 <a href="http://www.masport.com.au">www.masport.com.au</a>	Masport Ltd 1-37 Mt. Wellington Highway, Panmure, Auckland 1060 New Zealand Phone: 0800 627 7678 <a href="http://www.masport.co.nz">www.masport.co.nz</a>



## ***Disclaimer***

Ariens Company may from time to time change the design of its products. Nothing contained in this warranty shall be construed as obligating the Ariens Company to incorporate such design changes into previously manufactured products, nor shall such changes be construed as an admission that previous designs were defective.

## ***Limitation of Remedy and Damages***

Ariens Company's liability under this warranty, and under any implied warranty that may exist, is limited to repair of any defect in workmanship, and repair or replacement of any defective part. Ariens Company shall not be liable for incidental, special, or consequential damages (including lost profits). Some states do not allow the exclusion of incidental or consequential damages, so the above limitation or exclusion may not apply to you.

## ***Australian Consumer Law***

The following applies solely to warranties subject to Subsection 102(1) of the Australian Consumer Law: Our goods come with guarantees that cannot be excluded by the Australian Consumer Law. You are entitled to a replacement or refund for a major failure and for compensation for any other reasonably foreseeable loss or damage. You are also entitled to have the goods repaired or replaced if the goods fail to be of acceptable quality and failure does not amount to a major failure.

## ***Disclaimer of Further Warranty***

Ariens Company makes no warranty, express or implied, other than what is expressly made in this warranty. If the law of your state provides that an implied warranty of merchantability, or an implied warranty of fitness for particular purpose, or any other implied warranty, applies to Ariens Company, then any such implied warranty is limited to the duration of this warranty. Some states do not allow limitations on how long an implied warranty lasts, so the above limitation may not apply to you.

*This warranty gives you specific legal rights, and you may also have other rights which vary from region to region.*



**ARIENS**



**GRAVELY**

655 West Ryan Street  
Brillion, WI 54110  
[www.ariens.com](http://www.ariens.com)  
[www.gravely.com](http://www.gravely.com)

An *Ariens* Company Brand

