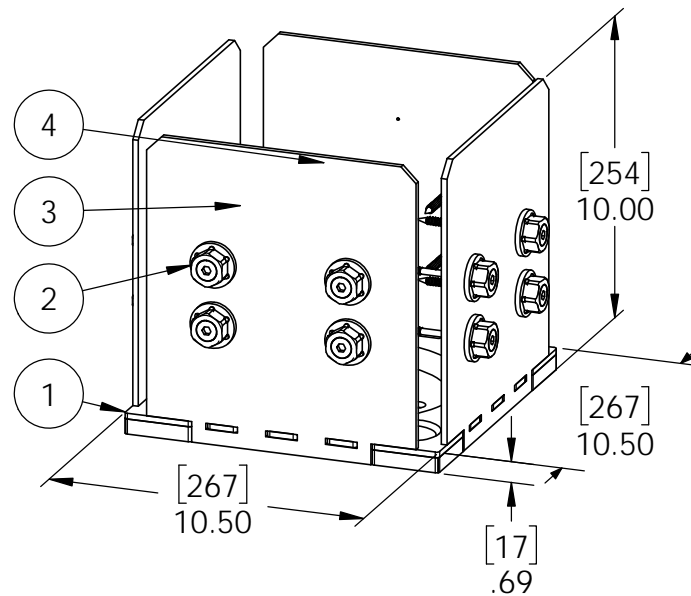
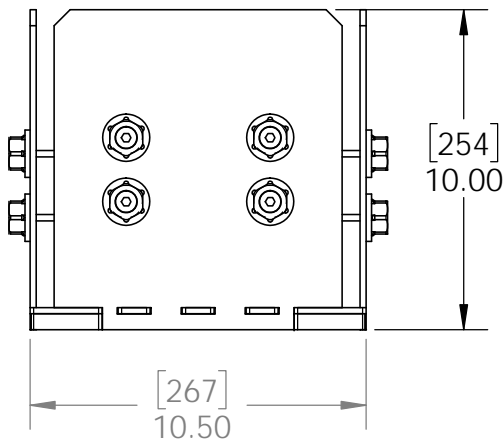
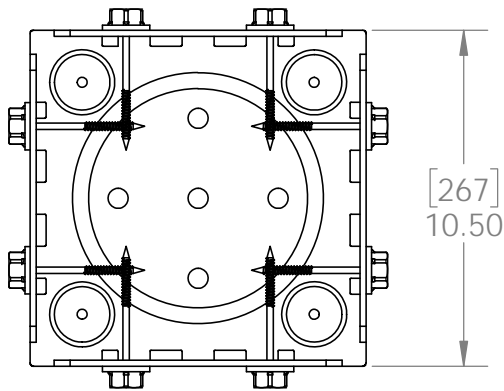


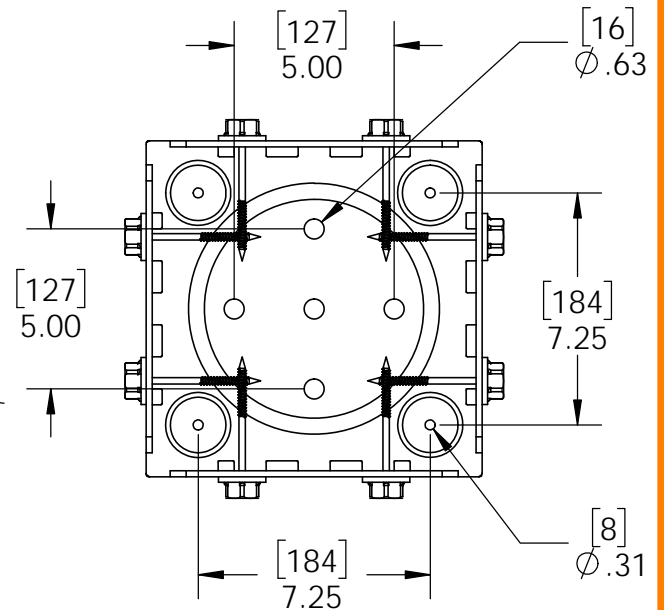
Product & Packaging Specs

10x10 Post Base (10x10-PB-IW)

Item #: 51705



ITEM NO.	QTY.	PART NUMBER	DESCRIPTION
1	1	56605-11	Assembly, 10x10 Stand Off
2	1.6	56621	1 1/2" Hex Cap Nut (HCN)
3	4	51705-15	Plate, 10x10 Side Compression
4	0.64	56627	OWT Timber Screw 3-3/4"



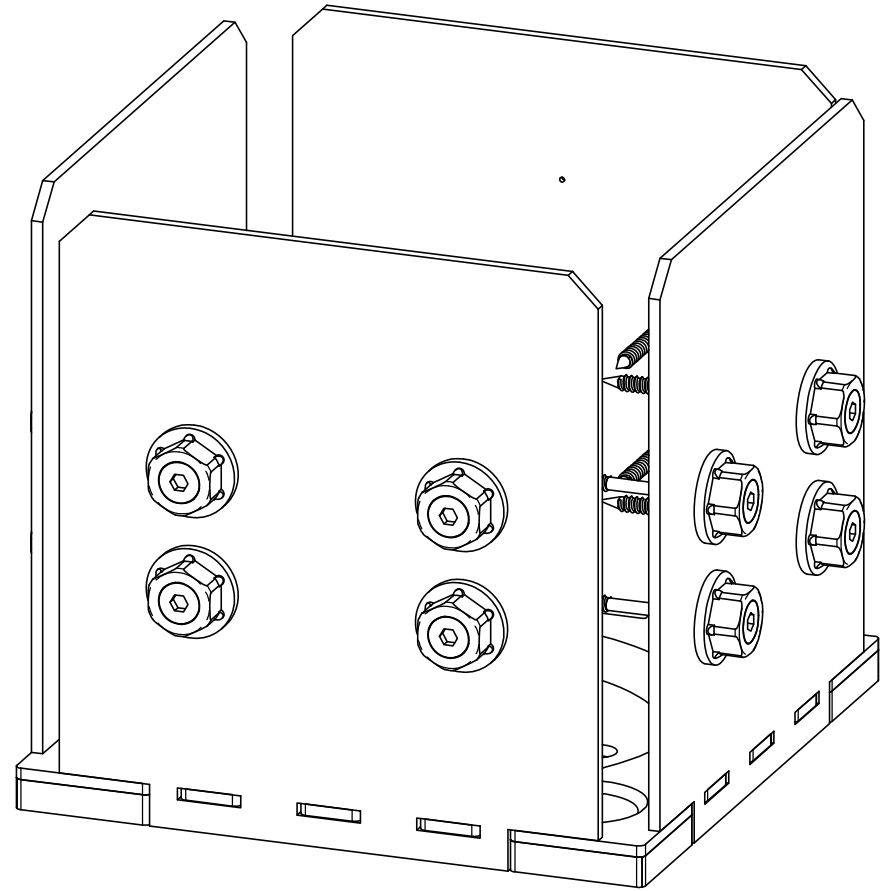
Weight: 72.81 LBS
Scale: 1:6
Last updated: 4/29/2016

51705

Product & Packaging Specs

10x10 Post Base (10x10-PB-IW)

Item #: 51705



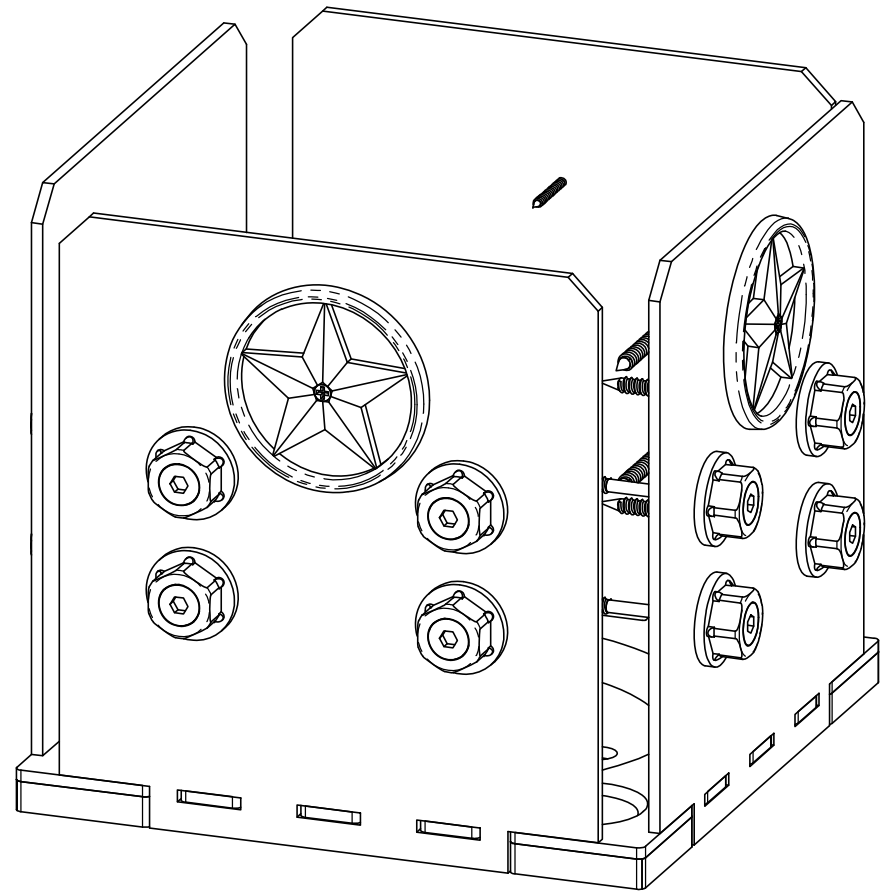
Weight: 72.81 LBS
Scale: 1:3
Last updated: 4/29/2016

51705

Product & Packaging Specs

10x10 Post Base (10x10-PB-IW)

Item #: 51705 with 56624



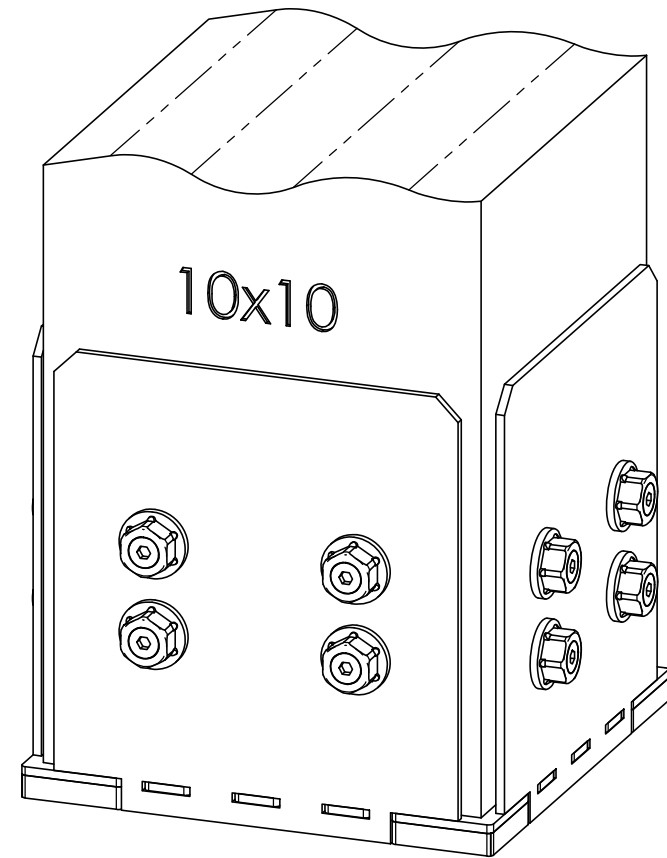
Weight: 72.81 LBS
Scale: 1:3
Last updated: 4/29/2016

51705

Product & Packaging Specs

10x10 Post Base (10x10-PB-IW)

Item #: Typical Installation & Basic Assembly



Scale: 1:4
Last updated: 4/29/2016

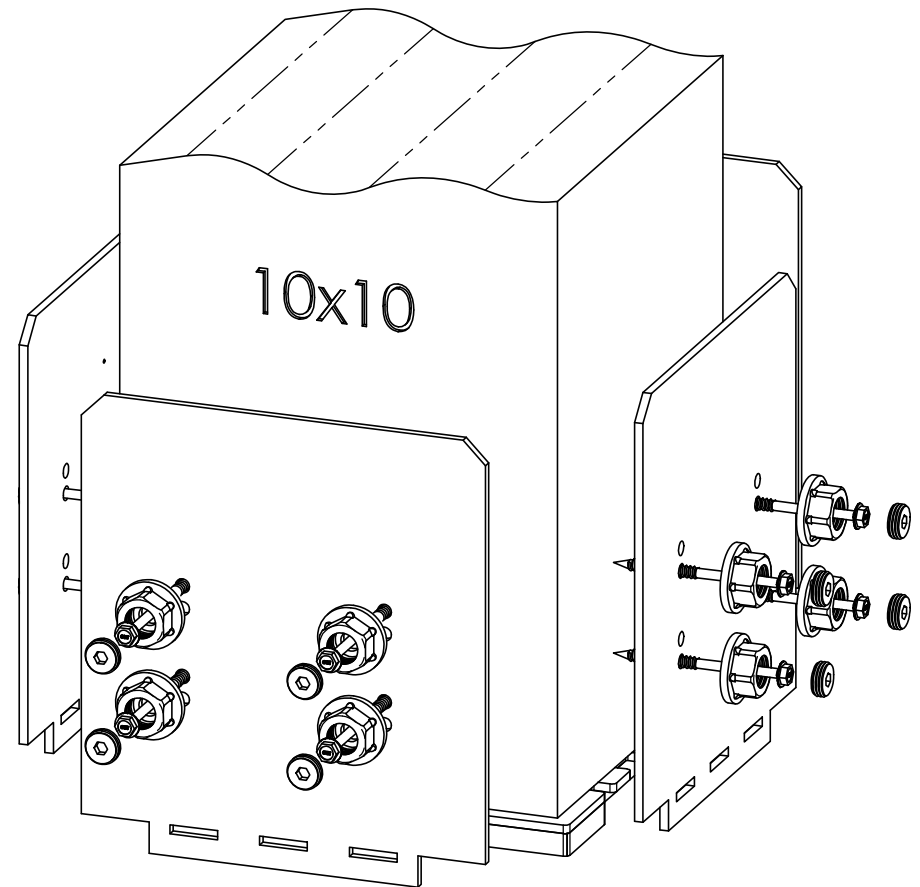
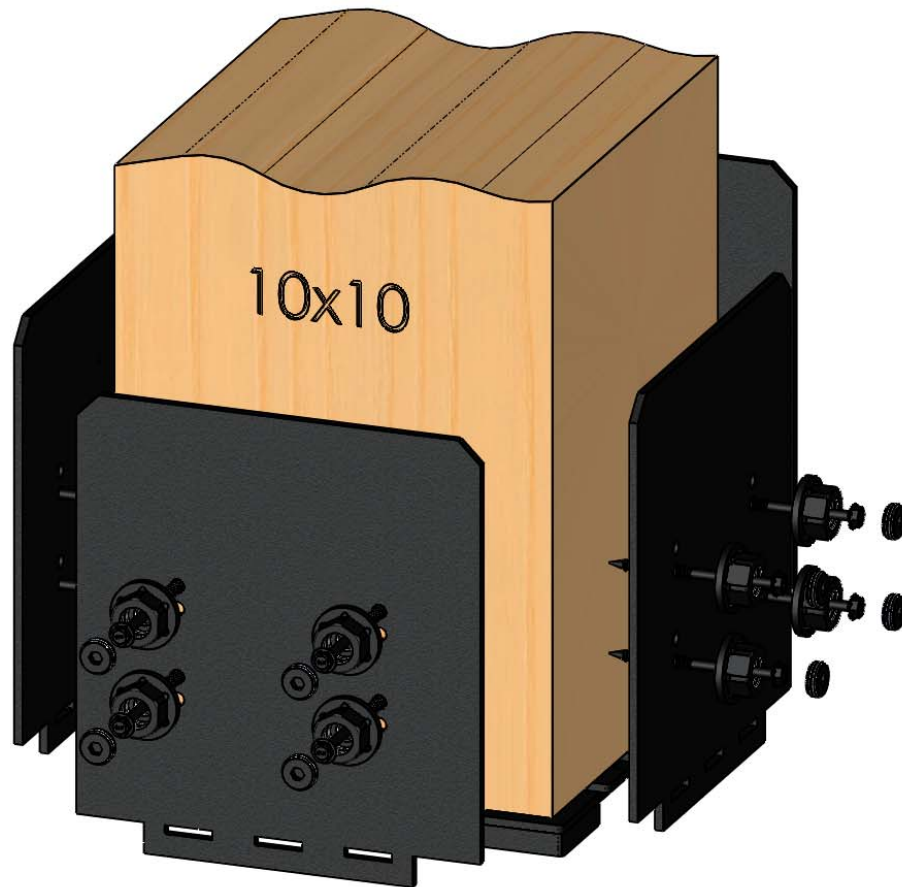
51705

V2.00 - Installation Instructions, Specifications and Project Plans are effective 4/29/2016. This information is updated periodically and should not be relied upon after 2 years from 4/29/2016. Please visit OZCOBP.com to get current information.

Product & Packaging Specs

10x10 Post Base (10x10-PB-IW)

Item #: Typical Installation & Basic Assembly



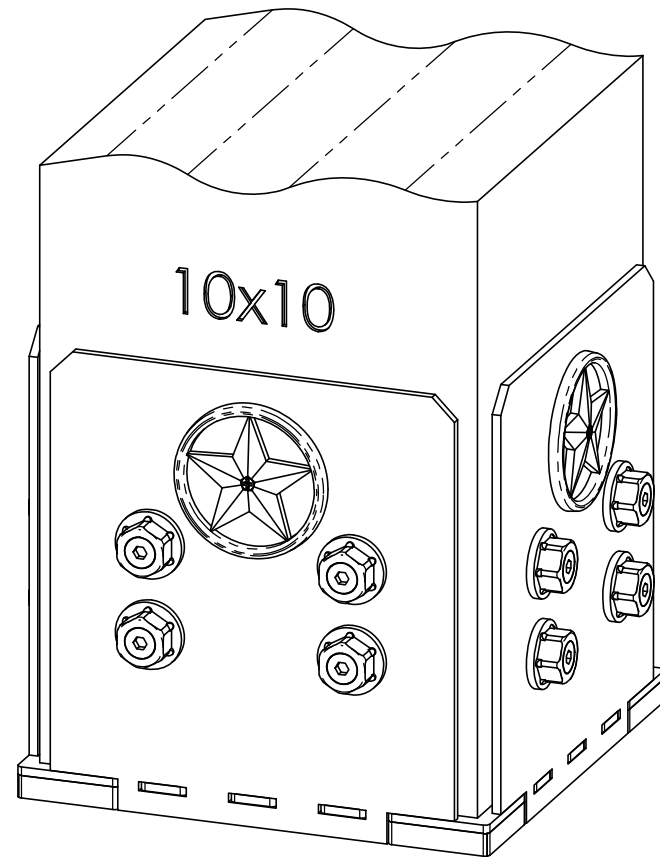
Scale: 1:4
Last updated: 4/29/2016

51705

Product & Packaging Specs

10x10 Post Base (10x10-PB-IW)

Item #: Typical Installation & Basic Assembly with 56624



Scale: 1:4
Last updated: 4/29/2016

51705