

SB-2600

Quick Installation Guide

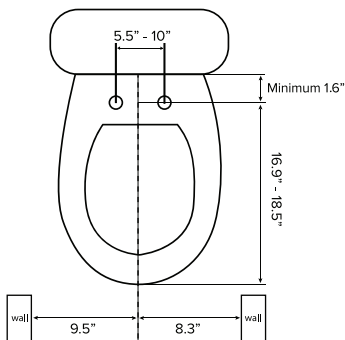


Do not plug in until installation is finished completely.
Not doing so may damage the appliance.

※If electric work is needed, please contact a qualified electrician or serviceman only.

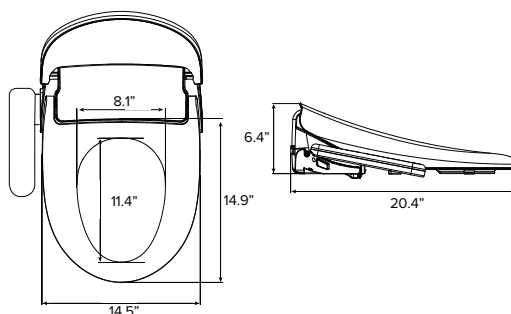
1 Toilet size (Elongated)

The toilet dimensions must be within those shown below. Do not install this unit on a toilet that does not meet these dimensional requirements.



Bidet Dimensions

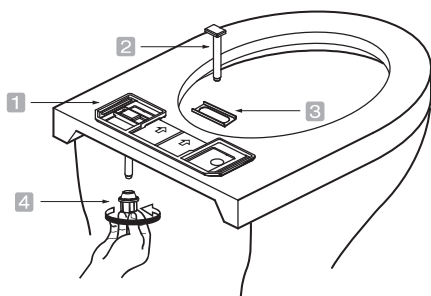
This model fits both elongated and round toilets. There may be a slight overhang for certain round toilets.



2 Remove your existing toilet seat, lid, and accessories and store them away.

3 How to mount the base plate

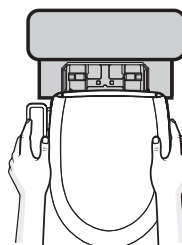
Place the base plate and bolt cases over each toilet mounting hole. Insert the mounting bolts through the base plate and toilet mounting holes. Screw in the nuts onto the mounting bolts.



- 1 Base plate
- 2 Mounting bolt
- 3 Bolt case
- 4 Nut

4 How to attach and detach the unit

1



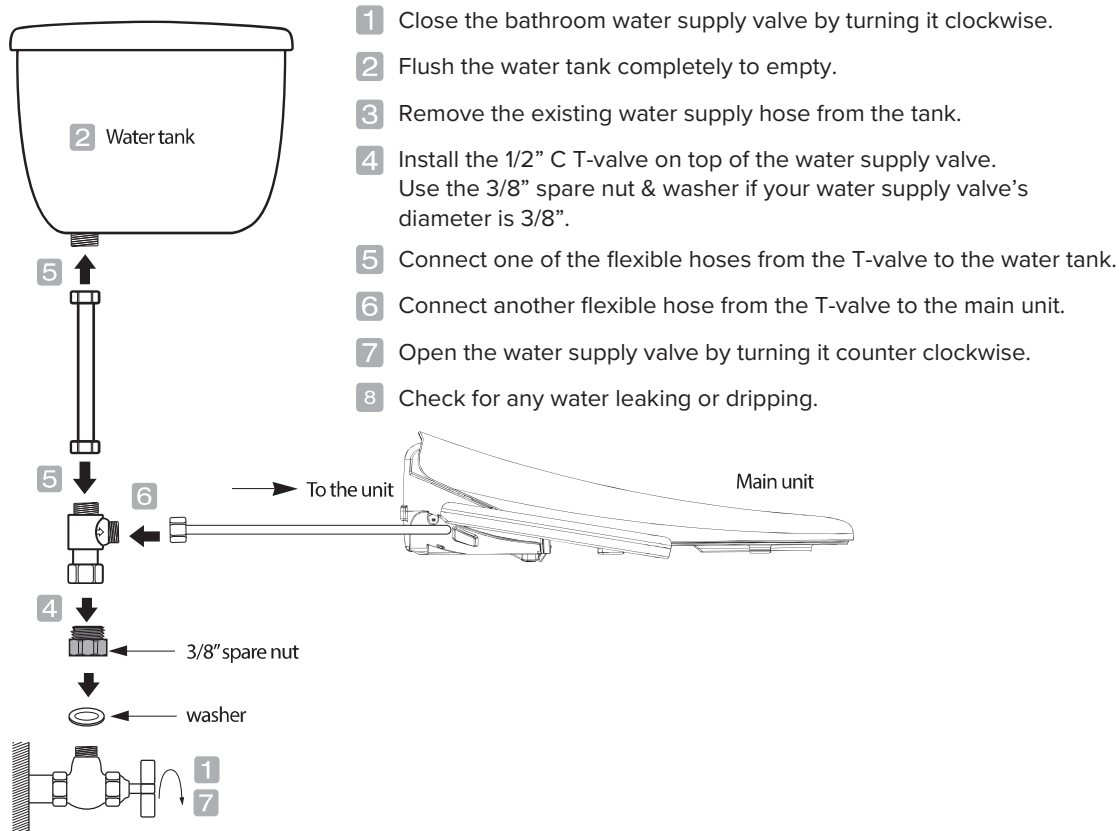
Slide the unit until it clicks into the base plate.

2



Lift the unit up and forward.

5 Connections



※ Water supply valves diameter may vary depending on your bathroom. If supplied parts do not fit, please purchase at your local hardware store.

6 Checking all functions

Use a bowl to cover the hole of the bidet seat to prevent water from spraying onto you then check all functions as described in this manual.

For Customer Service Inquiries,
please visit www.smartbidet.net
email us at cs@smartbidet.net,
or call us at 1-800-515-3430
(Mondays to Fridays 9:00am to 5:00pm EST)

Supplier: Hitrons Solutions Inc.
Address: 88 Portland Avenue Suite M
Bergenfield, NJ 07621
Limited 1 year warranty



smartbidet.net