



INSTALLATION MANUAL

Luxury Shower System

Customer Service
Email : Service@casainc.com
Phone:(888)257-3857



Model : BR0103612

Model : BR0103512

Model : BR0103710

CONTENT

1 . Installtion Condition	0 1
2 . Four-function Rain Shower System (Model:BR0103612)	02
3 . Four-function Rain Shower System (Model:BR0103512)	08
4 . Four-function Rain Shower System (Model:BR0103710)	14

◆ Installation Condition

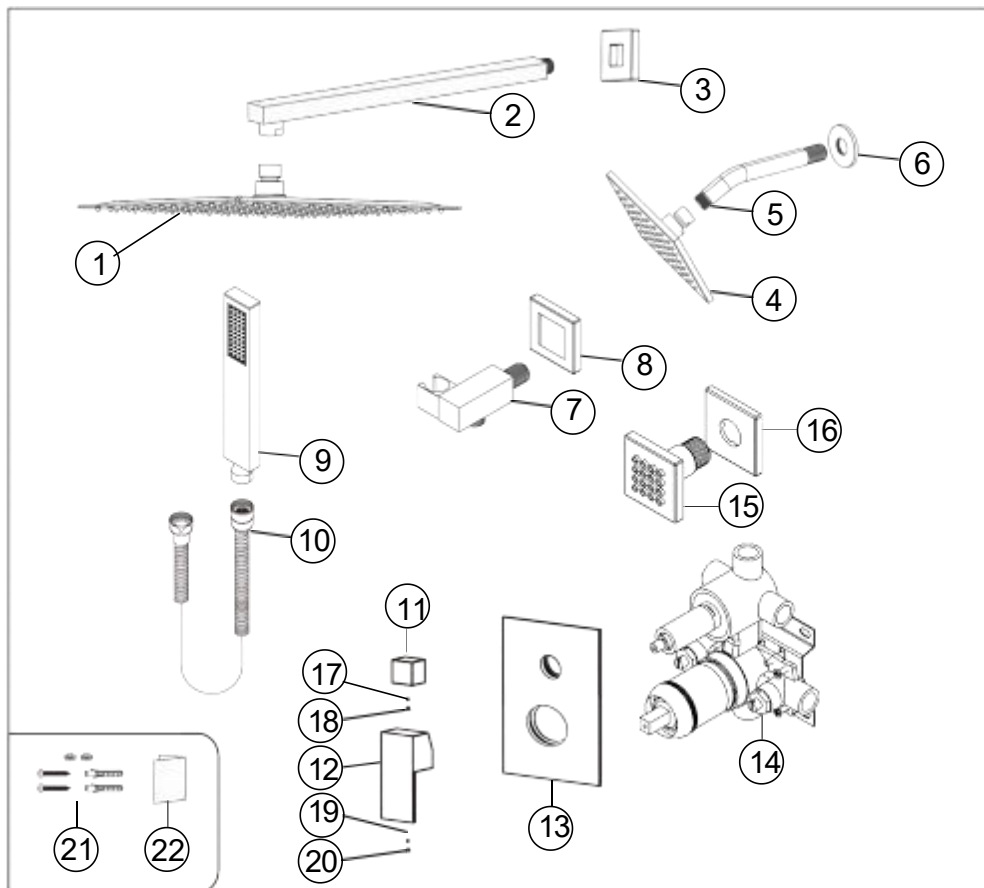
- 1.Check the accessories list to verify that all parts are complete in this package.
- 2.Do not disassemble the shower valve body by yourself.
- 3.Connect inlet pipes to supply valves.
- 4.Make sure inlet pipes and supply valves have no impurities and are cleaned,with no impurities in the pipeline.
- 5.After installation.check all joints for leakages.
- 6.Do not leave the rain shower system exposed to a severely corrosive environment.



YOU MAY NEED:

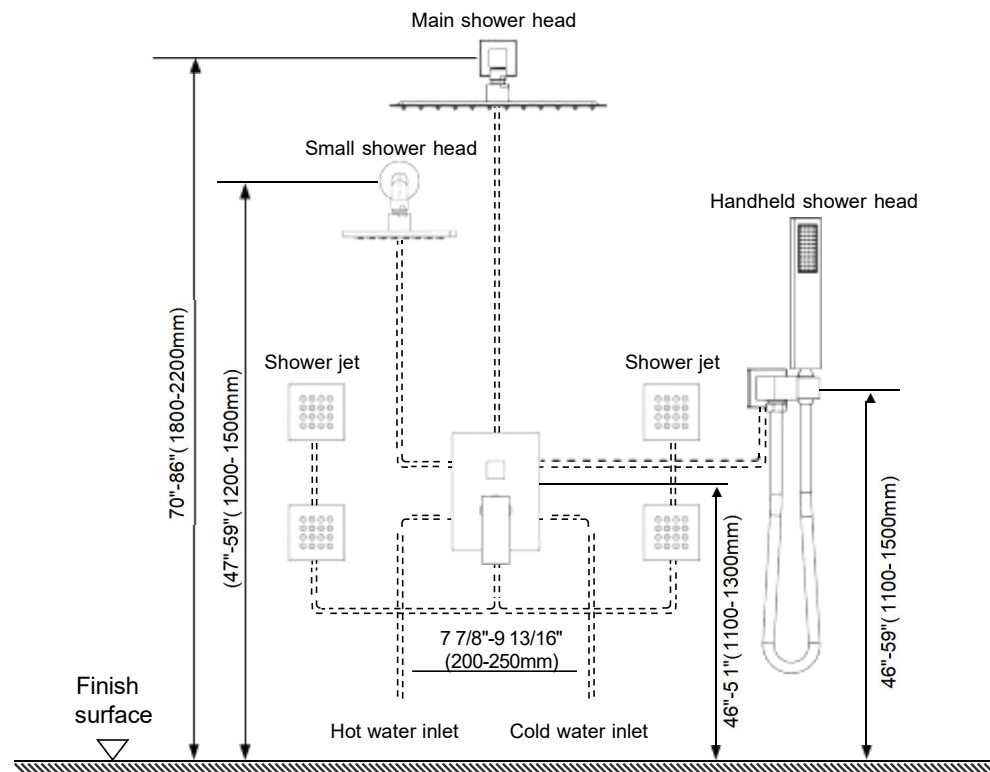


◆ Four-function Rain Shower System
Model: BR0103612
Accessories List

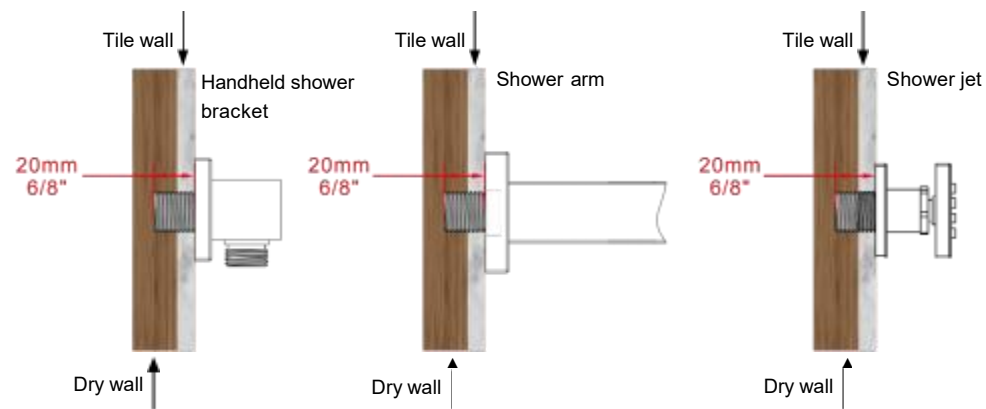


No.	Part name	Qty	No.	Part name	Qty
1	Main shower head	1	12	Shower valve handle	1
2	Main shower arm	1	13	Trim plate	1
3	Shower arm flange	1	14	Shower valve body	1
4	Small shower head	1	15	Shower jet	4
5	Small shower arm	1	16	Shower jet flange	4
6	Shower arm flange	1	17	Shower valve diverter knob screw	1
7	Handheld shower bracket	1	18	Set screw	1
8	Handheld shower bracket flange	1	19	Shower valve handle screw	1
9	Handheld shower head	1	20	Set screw	1
10	Shower hose	1	21	Shower valve body spare parts	4
11	Shower valve diverter knob	1	22	Instruction manual	1

◆ Essential dimensions & water pipe line
Unit:mm/inch

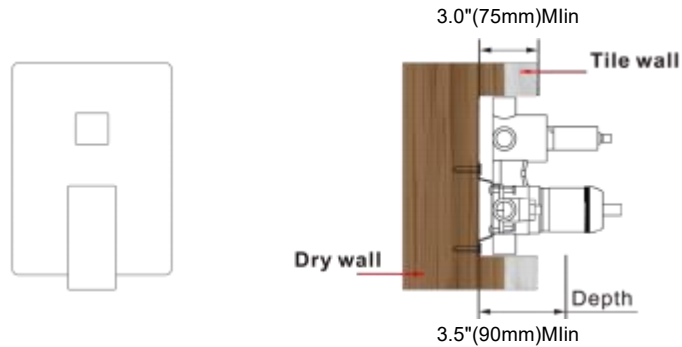


◆ The installation depth of handheld shower bracket and shower jet



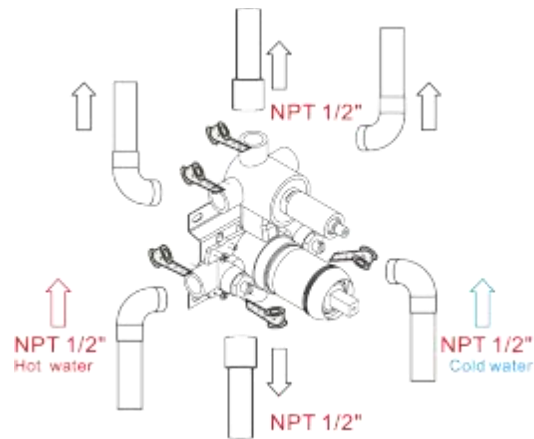
The thickness of the tile must be calculated for installation.
Connector size of male thread:USA:1/2"-14NPT.Canada:1/2"-14NPT.
Europe: G1/2"

◆ Installation Depth Of Shower Valve Body



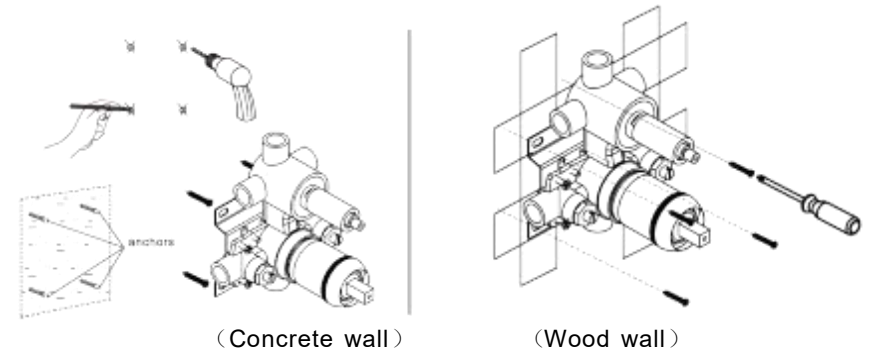
Notice: 1. The installation depth of the shower valve body should be no less than 3.0"(75mm) and no more than 3.5"(90mm), including the thickness of the tile. Otherwise, the trim plate cannot be installed.
2. The opening size of ceramic tile shall be smaller than the trim plate size.

◆ Piping Instructiong Before Tiling



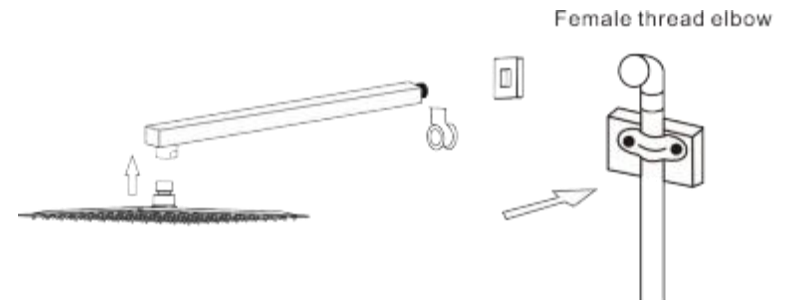
1. As shown in the figure, the inlet and outlet pipes are pre-buried. Please pay attention to the correct direction when installing the pre-buried shower valve body.
2. Before tiling, turn on the water to test whether the left and right inlet pipes are tightly connected without leakage.
Then adjust the flow switch to the "on" position to check for leaks in the mixed outlet pipes.

◆ Shower Valve Body Installation



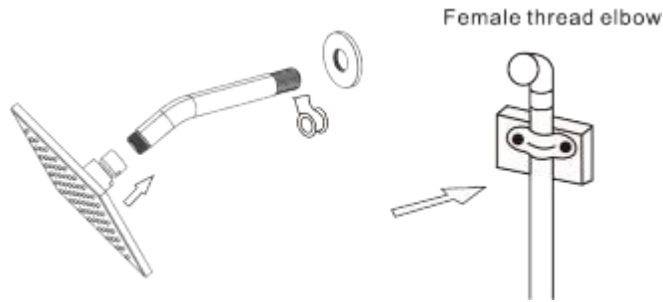
1. Make marks according to the size of the shower valve body valve, and then drill anchors into the wall (concrete wall).
2. Lock the shower valve body to wood directly with screws (wood wall).
3. When installing the shower valve body, please mark the UP side up and do not install it upside down.
▲ Please note that the level meter should be parallel to the wall; otherwise, the trim plate cannot be installed.

◆ Installation Of Shower Head And Shower Arm



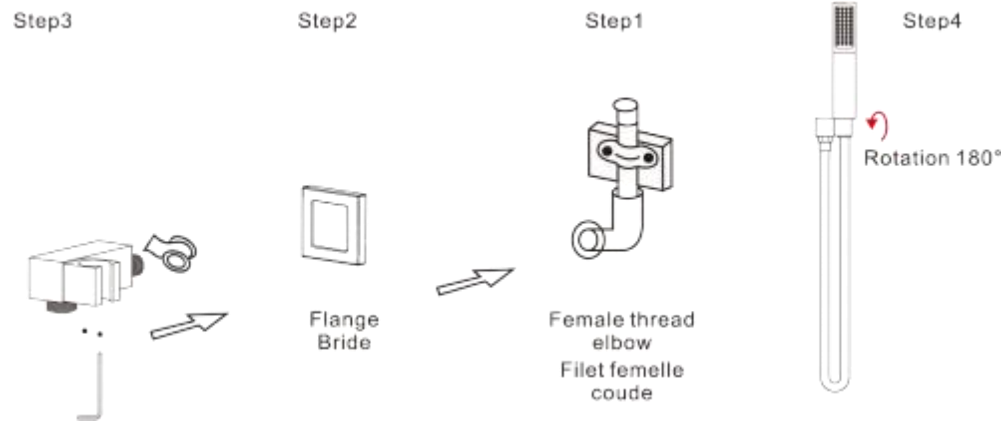
1. Connect shower arm with the cover before screwing arm into riser connection to prevent damage.
2. Fix shower head onto shower arm and apply tape to pipe threads on both ends.
3. Do not overtighten shower head. It is 360° swivel connection.

◆ Installation Of Small Shower Head And Shower Arm



1. Connect shower arm with the cover before screwing arm into riser connection to prevent damage.
2. Fix shower head onto shower arm and apply tape to pipe threads on both ends.
3. Do not overtighten shower head. It is 360° swivel connection.

◆ Installation The Handle Shower Bracket



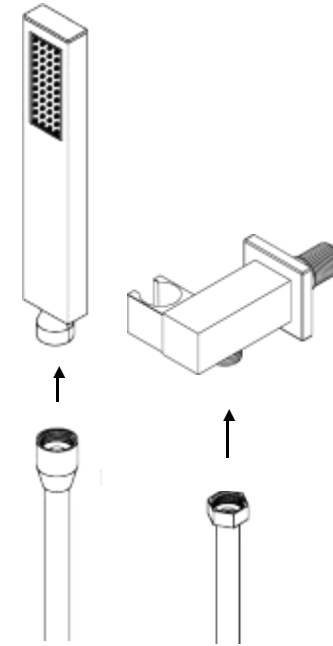
- Step1. Screw the thread into the water pipe inside the wall
- Step2. Screw the shower valve body into the thread.
- Step3. Rotate and fix the body with the special-shaped wrench.
- Step4. Connect hand shower and the hose.

◆ Installation The Handle Shower Arm Bracket

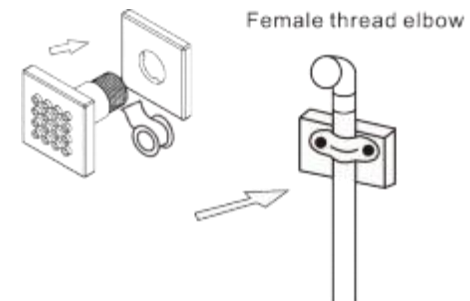
Step 1. First use anchors to screw the pipeholder into the wall.

Step 2. Remove the two screws from the shower seat.

Step 3. Insert the shower seat into the pre-installed copper fittings on the wall. then secure the shower seat with the two screws you removed earlier.

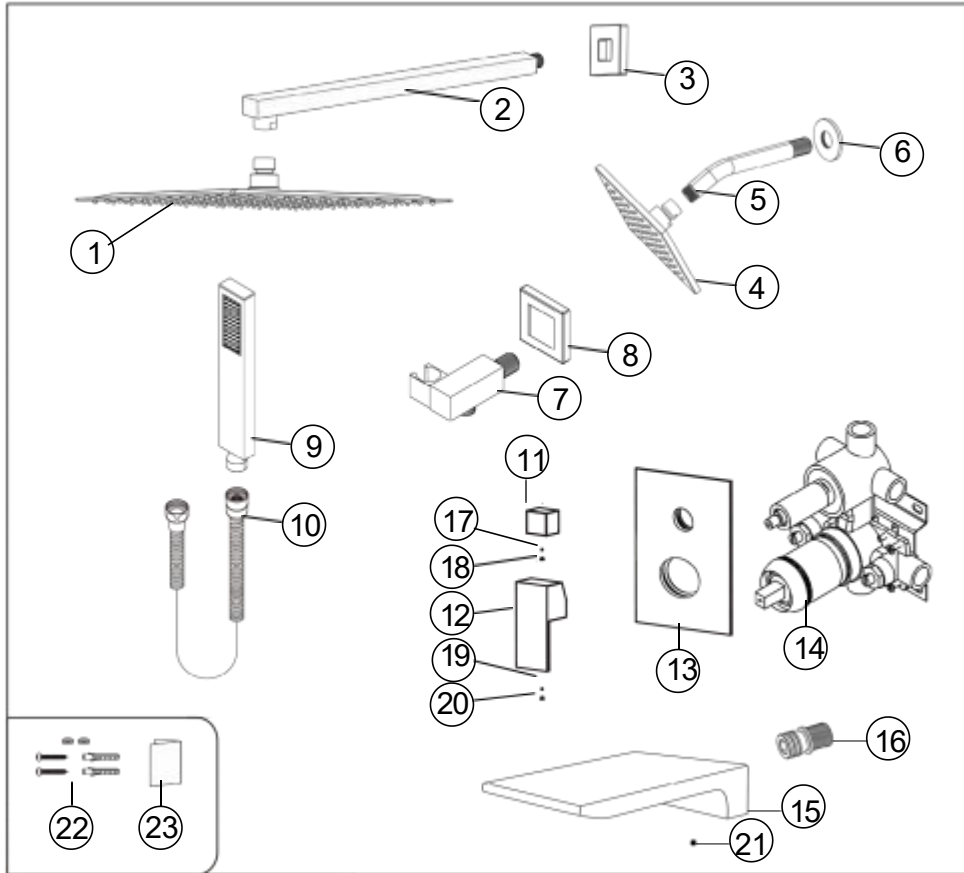


◆ Installation Of Shower Jet



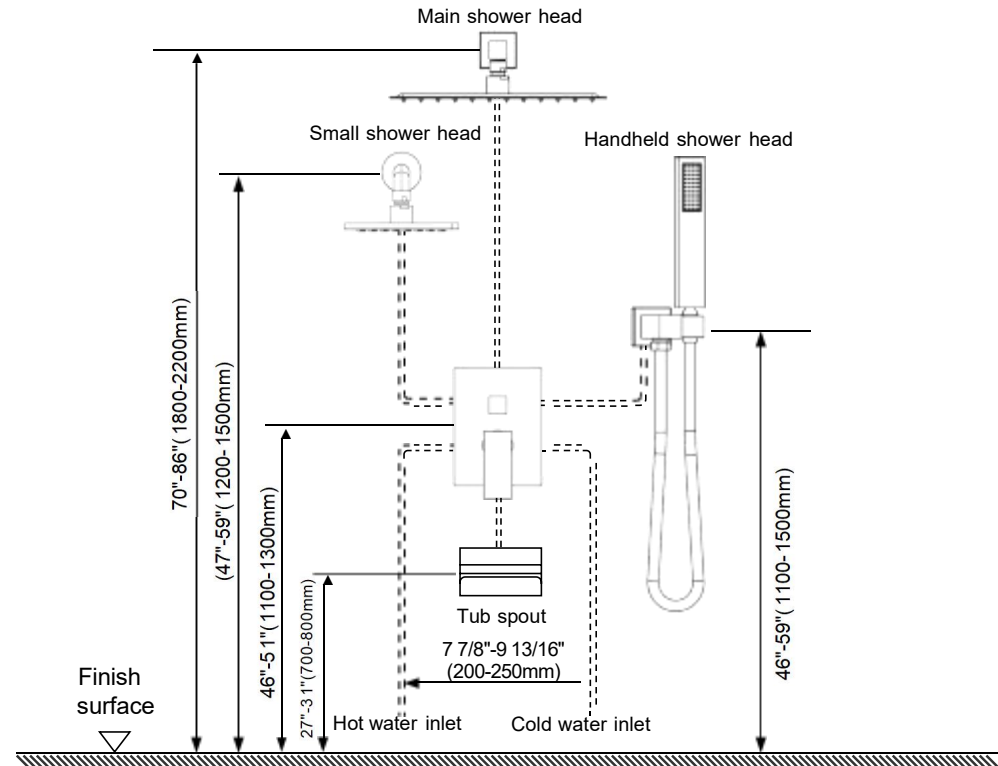
1. Connect shower jet with the cover before screwing arm into riser connection to prevent damage, and apply tape to pipe threads on both ends.

◆ Four-function Rain Shower System
Model: BR0103512 Accessories List

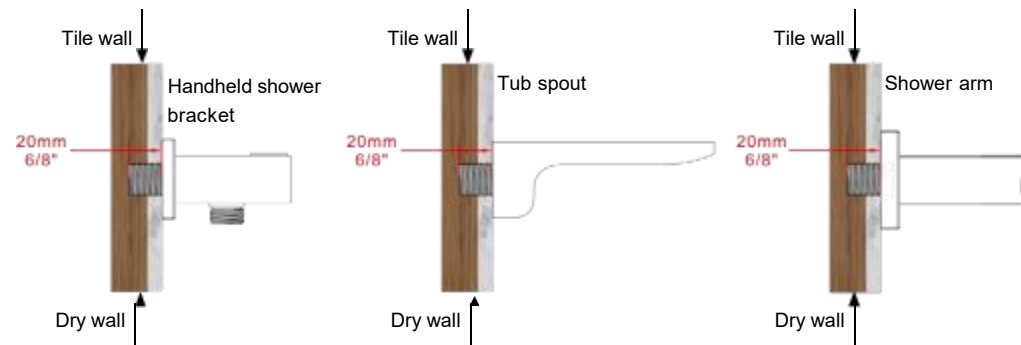


No.	Part name	Qty	No.	Part name	Qty
1	Main shower head	1	13	Trim plate	1
2	Main shower arm	1	14	Shower valve body	1
3	Shower arm flange	1	15	Tub spout	1
4	Small shower head	1	16	Spout inlet	1
5	Small shower arm	1	17	Shower valve diverter knob screw	1
6	Shower arm flange	1	18	Set screw	1
7	Handheld shower bracket	1	19	Shower valve handle screw	1
8	Handheld shower bracket flange	1	20	Set screw	1
9	Handheld shower head	1	21	Tub spout screw	1
10	Shower hose	1	22	Shower valve body spare parts	4
11	Shower valve diverter knob	1	23	Instruction manual	1
12	Shower valve handle	1			

◆ Essential dimensions & water pipe line
Unit:mm/inch

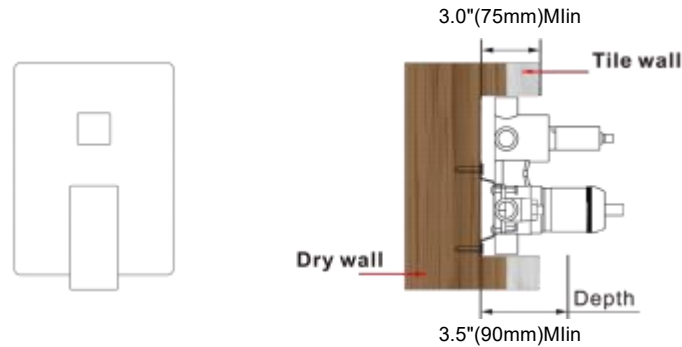


◆ The installation depth of handheld shower bracket and shower jet



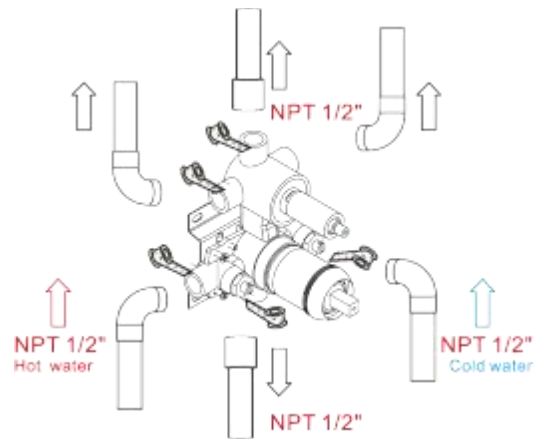
The thickness of the tile must be calculated for installation.
Connector size of male thread:USA:1/2"-14NPT.Canada:1/2"-14NPT.
Europe: G1/2"

◆ Installation Depth Of Shower Valve Body



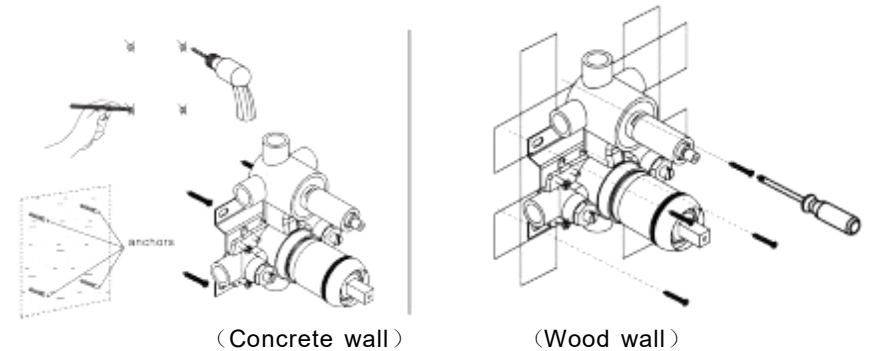
Notice: 1. The installation depth of the shower valve body should be no less than 3.0"(75mm) and no more than 3.5"(90mm), including the thickness of the tile. Otherwise, the trim plate cannot be installed.
2. The opening size of ceramic tile shall be smaller than the trim plate size.

◆ Piping Instructiong Before Tiling



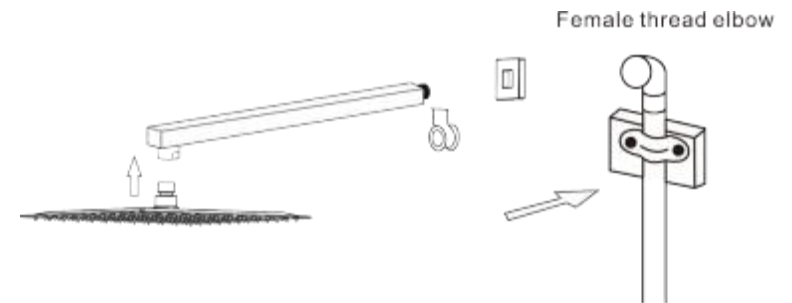
1. As shown in the figure, the inlet and outlet pipes are pre-buried. Please pay attention to the correct direction when installing the pre-buried shower valve body.
2. Before tiling, turn on the water to test whether the left and right inlet pipes are tightly connected without leakage.
Then adjust the flow switch to the "on" position to check for leaks in the mixed outlet pipes.

◆ Shower Valve Body Installation



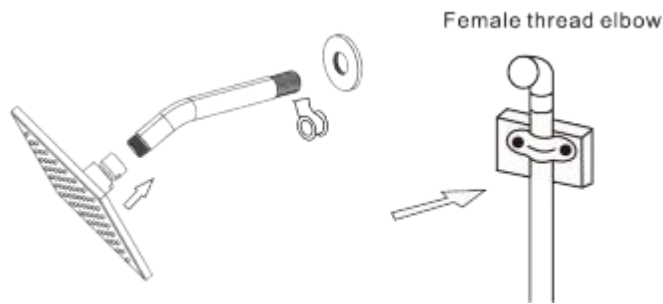
1. Make marks according to the size of the shower valve body valve, and then drill anchors into the wall (concrete wall).
2. Lock the shower valve body to wood directly with screws (wood wall).
3. When installing the shower valve body, please mark the UP side up and do not install it upside down.
▲ Please note that the level meter should be parallel to the wall; otherwise, the trim plate cannot be installed.

◆ Installation Of Shower Head And Shower Arm



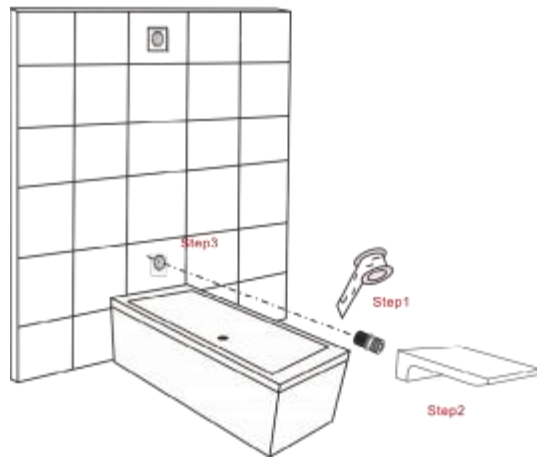
1. Connect shower arm with the cover before screwing arm into riser connection to prevent damage.
2. Fix shower head onto shower arm and apply tape to pipe threads on both ends.
3. Do not overtighten shower head. It is 360° swivel connection.

◆ Installation Of Small Shower Head And Shower Arm



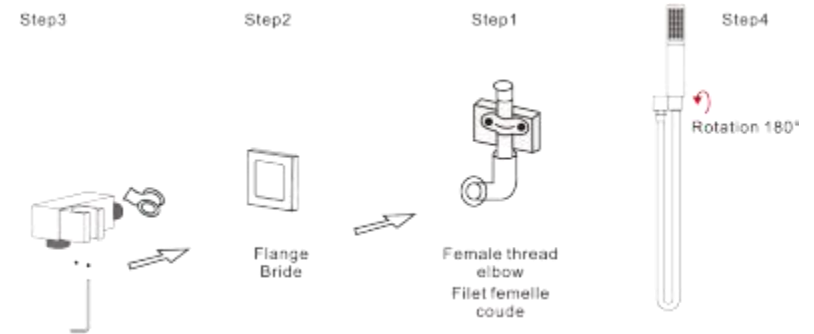
1. Connect shower arm with the cover before screwing arm into riser connection to prevent damage.
2. Fix shower head onto shower arm and apply tape to pipe threads on both ends.
3. Do not overtighten shower head. It is 360° swivel connection.

◆ Install The Tub Spout



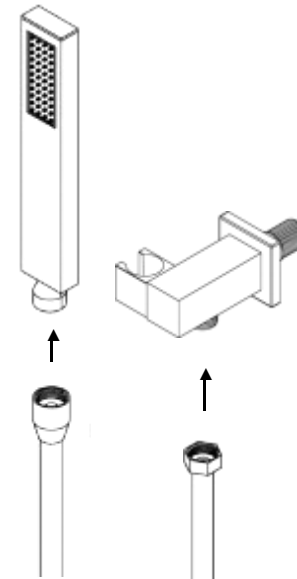
- Step1: Connect the copper connector to the bathtub spout and wrap it with waterproof tape.
- Step2: Install the round decorative cover.
- Step3: Rotate the bathtub spout to connect with the internal thread on the wall.

◆ Installation The Handle Shower Bracket



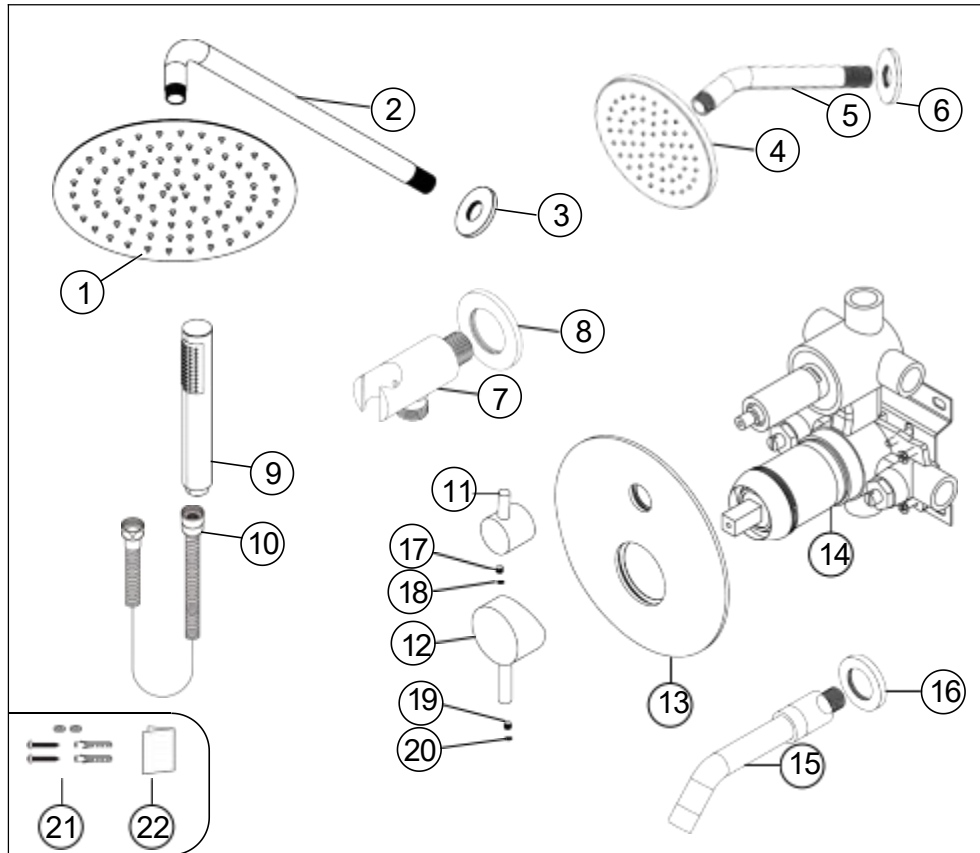
- Step1. Screw the thread into the water pipe inside the wall
- Step2. Screw the shower valve body into the thread.
- Step3. Rotate and fix the body with the special-shaped wrench.
- Step4. Connect hand shower and the hose.

◆ Installation The Handle Shower Arm Bracket



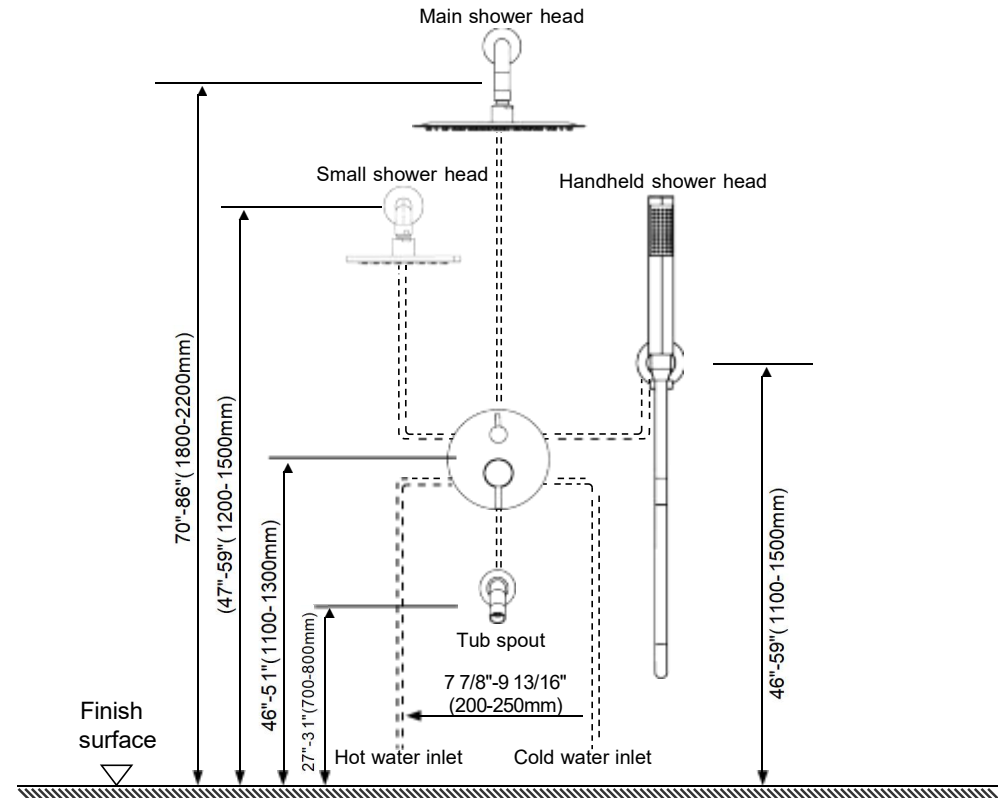
- Step 1. First use anchors to screw the pipeholder into the wall.
- Step 2. Remove the two screws from the shower seat.
- Step 3. Insert the shower seat into the pre-installed copper fittings on the wall. then secure the shower seat with the two screws you removed earlier.

◆ Four-function Rain Shower System
Model: BR0103710
Accessories List

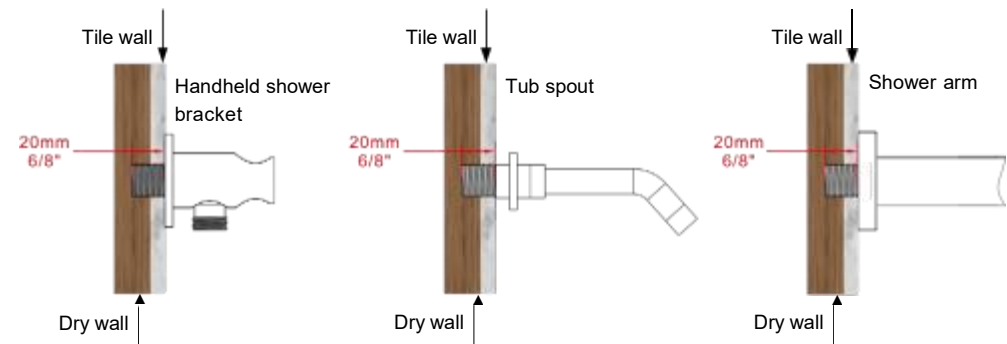


No.	Part name	Qty	No.	Part name	Qty
1	Main shower head	1	12	Shower valve handle	1
2	Main shower arm	1	13	Trim plate	1
3	Shower arm flange	1	14	Shower valve body	1
4	Small shower head	1	15	Tub spout	1
5	Small shower arm	1	16	Tub spout flange	1
6	Shower arm flange	1	17	Shower valve diverter knob screw	1
7	Handheld shower bracket	1	18	Set screw	1
8	Handheld shower bracket flange	1	19	Shower valve handle screw	1
9	Handheld shower head	1	20	Set screw	1
10	Shower hose	1	21	Shower valve body spare parts	4
11	Shower valve diverter knob	1	22	Instruction manual	1

◆ Essential dimensions & water pipe line
Unit:mm/inch

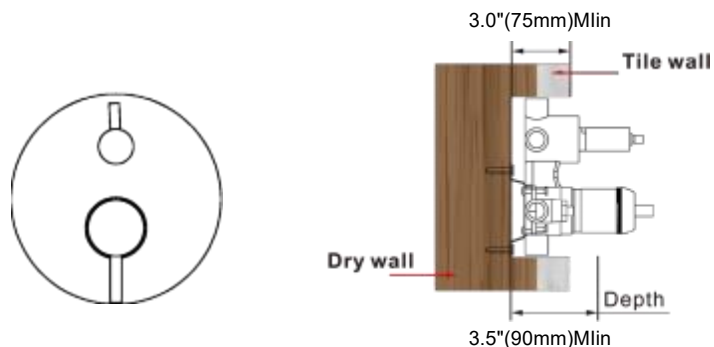


◆ The installrtion depth of handheld shower bracket and tub spout



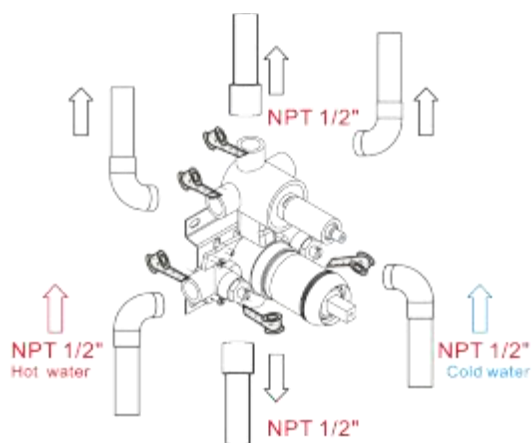
The thickness of the tile must be calculated for installation.
 Connector size of male thread:USA:1/2"-14NPT.Canada:1/2"-14NPT.
 Europe: G1/2"

◆ Installation Depth Of Shower Valve Body



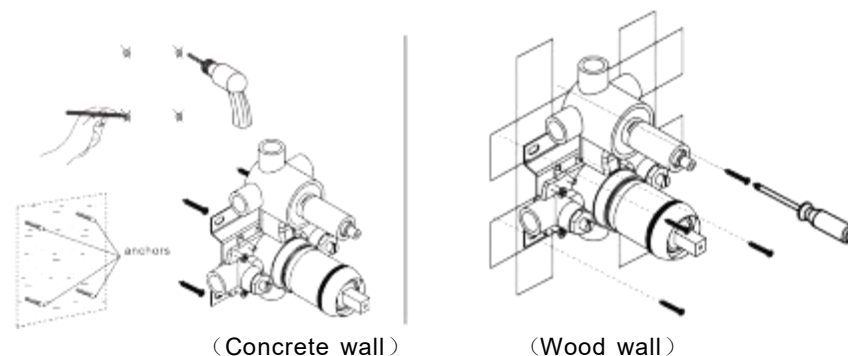
Notice: 1. The installation depth of the shower valve body should be no less than 3.0\"(75mm) and no more than 3.5\"(90mm), including the thickness of the tile. Otherwise, the trim plate cannot be installed.
2. The opening size of ceramic tile shall be smaller than the trim plate size.

◆ Piping Instructiong Before Tiling



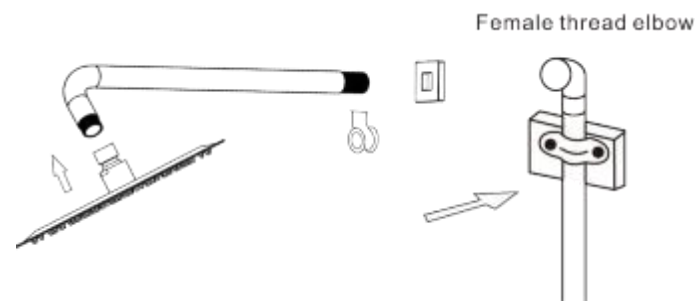
1. As shown in the figure, the inlet and outlet pipes are pre-buried. Please pay attention to the correct direction when installing the pre-buried shower valve body.
2. Before tiling, turn on the water to test whether the left and right inlet pipes are tightly connected without leakage.
Then, adjust the flow switch to the "on" position to check for leaks in the mixed outlet pipes.

◆ Shower Valve Body Valve Installation



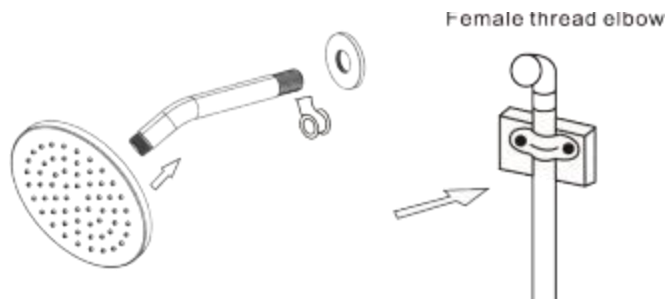
1. Make marks according to the size of the shower valve body valve, and then drill anchors into the wall (concrete wall).
2. Lock the shower valve body to wood directly with screws (wood wall).
3. When installing the shower valve body, please mark the UP side up and do not install it upside down.
▲ Please note that the level meter should be parallel to the wall; otherwise, the trim plate cannot be installed.

◆ Installation Of Shower Head And Shower Arm



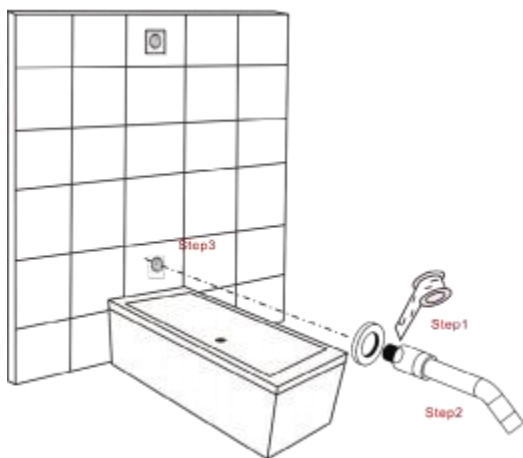
1. Connect shower arm with the cover before screwing arm into riser connection to prevent damage.
2. Fix shower head onto shower arm and apply tape to pipe threads on both ends.
3. Do not overtighten shower head. It is 360° swivel connection.

◆ Installation Of Small Shower Head And Shower Arm



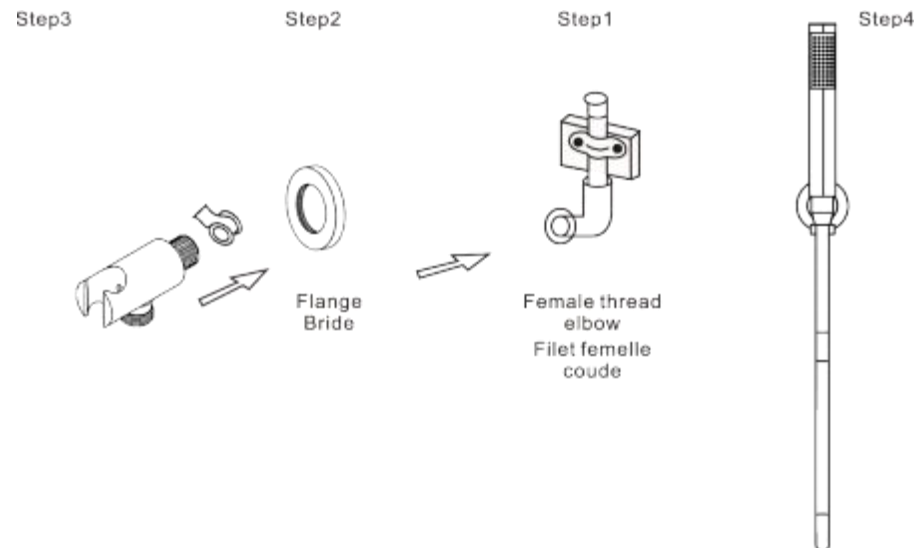
1. Connect shower arm with the cover before screwing arm into riser connection to prevent damage.
2. Fix shower head onto shower arm and apply tape to pipe threads on both ends.
3. Do not overtighten shower head. It is 360° swivel connection.

◆ Install The Tub Spout



- Step1: Connect the copper connector to the bathtub spout and wrap it with waterproof tape.
- Step2: Install the round decorative cover.
- Step3: Rotate the bathtub spout to connect with the internal thread on the wall.

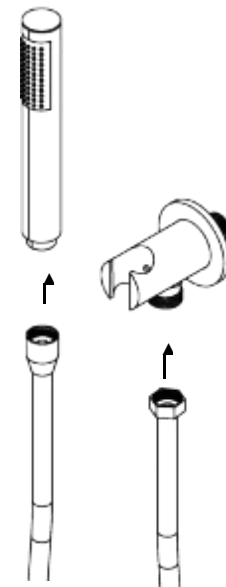
◆ Installation The Handle Shower Bracket



- Step1. Screw the thread into the water pipe inside the wall
- Step2. Screw the shower valve body into the thread.
- Step3. Rotate and fix the body with the special-shaped wrench.
- Step4. Connect hand shower and the hose.

◆ Installation The Handle Shower Arm Bracket

- Step 1. First use anchors to screw the pipeholder into the wall
- Step 2. Remove the two screws from the shower seat.
- Step 3. Insert the shower seat into the pre-installed copper fittings on the wall. then secure the shower seat with the two screws you removed earlier.



Do's

1. In order to keep the mixer surface bright, please clean the mixer regularly.
2. Rinse the faucet with clean water and wipe it with a soft cotton cloth.
3. Use one of the following cleaners to remove dirt from the surface:
 - a. Mild liquid cleaner.
 - b. Colorless glass cleaner and powder cleaner that do not cause abrasion and can be dissolved completely.
 - c. Polish liquid that does not cause abrasion.



Don'ts

- a. Avoid using cleaning powder, harsh cleaning chemicals, brushes and coarse cloth to prevent scratching and friction.
- b. Do not use acid cleaners to clean the faucet as they may cause surface corrosion of the faucet. If the faucet is exposed to harmful acid substances, please rinse it immediately with water.