

| 1.0 Reference and Address | | | |
|---------------------------|--|------------------------------|---|
| Report Number | 170227088GZU-001 | Original Issued: 19-Jun-2017 | Revised: 6-Jan-2024 |
| Standard(s) | Ice Makers [UL 563:2009 Ed.8+R:26May2021] Refrigeration Equipment (R2018) [CSA C22.2#120:2013 Ed.4] | | |
| Applicant | Guangdong Welly Electrical Appliances Co., Ltd | Manufacturer | Guangdong Welly Electrical Appliances Co., Ltd |
| Address | Fusha Industrial Park, Fusha Town, ZHONGSHAN CITY, Guangdong Province | Address | Fusha Industrial Park, Fusha Town, ZHONGSHAN CITY, Guangdong Province |
| Country | China | Country | China |
| Contact | Mr. Yangjianli | Contact | Mr. Yangjianli |
| Phone | 86-760-22507145 | Phone | 86-760-22507145 |
| FAX | 86-760-22507100-1080 | FAX | 86-760-22507100-1080 |
| Email | yangjianli@weili.com.cn | Email | yangjianli@weili.com.cn |

| 2.0 Product Description | | | | |
|-------------------------|---|--------------|-------------|------------------|
| Product | Ice Maker | | | |
| Brand name | WEILI, Professional Series, AGLUCKY, Kndko, Kismile, COWSAR | | | |
| Description | The product covered by this report is Ice Maker having a rating of 110-120 V, 60 Hz intended for Indoor and Household Use Only, provided with a nondetachable flexible power supply cord terminated in NEMA Config 5-15P plug. | | | |
| Models | ICM-1588, ICM-1588L, PS-IM339-I6A, Z3915-BLACK, Z3915-SILVER, Z3915-BLACK-KSZ, Z3915-SILVER-KSZ | | | |
| Model Similarity | ICM-1588L is similar to ICM-1588 except for evaporator. PS-IM339-I6A is the same as ICM-1588 except model number. Z3915-BLACK, Z3915-SILVER, Z3915-BLACK-KSZ, Z3915-SILVER-KSZ are the same as ICM-1588L except model number. | | | |
| Ratings | 110-120 V, 2.5 A, 60 Hz | | | |
| Other Ratings | High pressure | Low pressure | Refrigerant | Refrigerant Mass |
| | 220 PSIG | 130 PSIG | R600a | 1.06 oz |

3.0 Product Photographs

Photo 1 - External view of model ICM-1588 also represents model ICM-1588L



Photo 2 - External view of model ICM-1588 also represents model ICM-1588L



3.0 Product Photographs

Photo 3 - External view of model ICM-1588 also represents model ICM-1588L

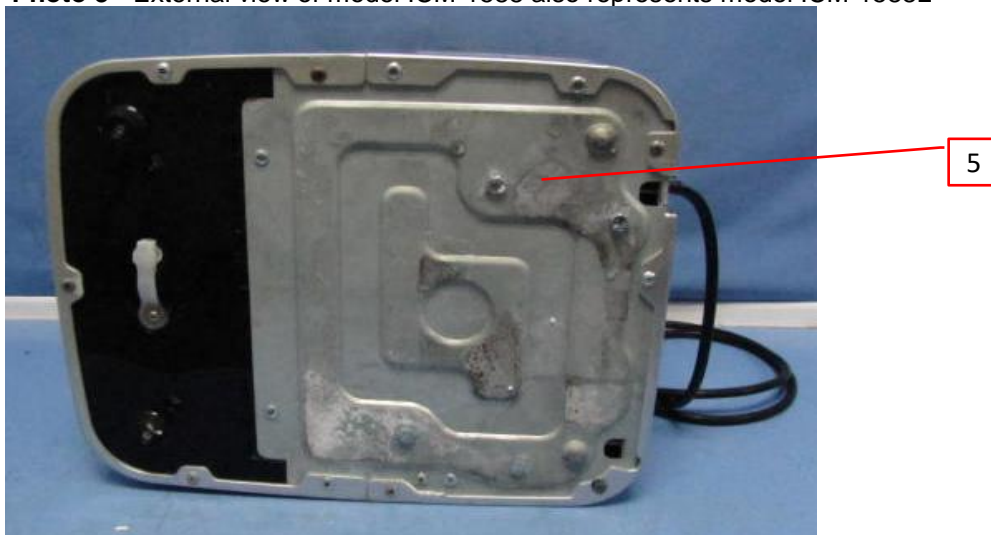


Photo 4 - External view of model ICM-1588 also represents model ICM-1588L

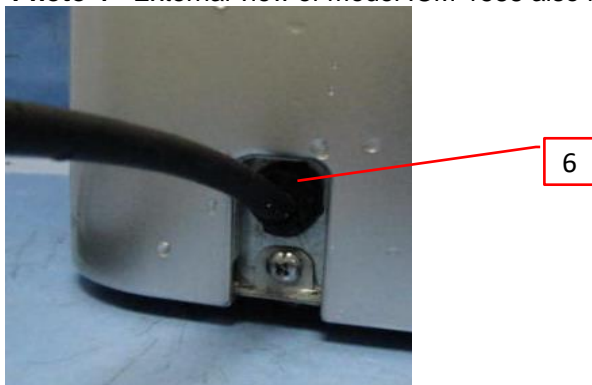


Photo 4a - External view of model ICM-1588 also represents model ICM-1588L



3.0 Product Photographs

Photo 5 - Internal view of model ICM-1588 also represents model ICM-1588L

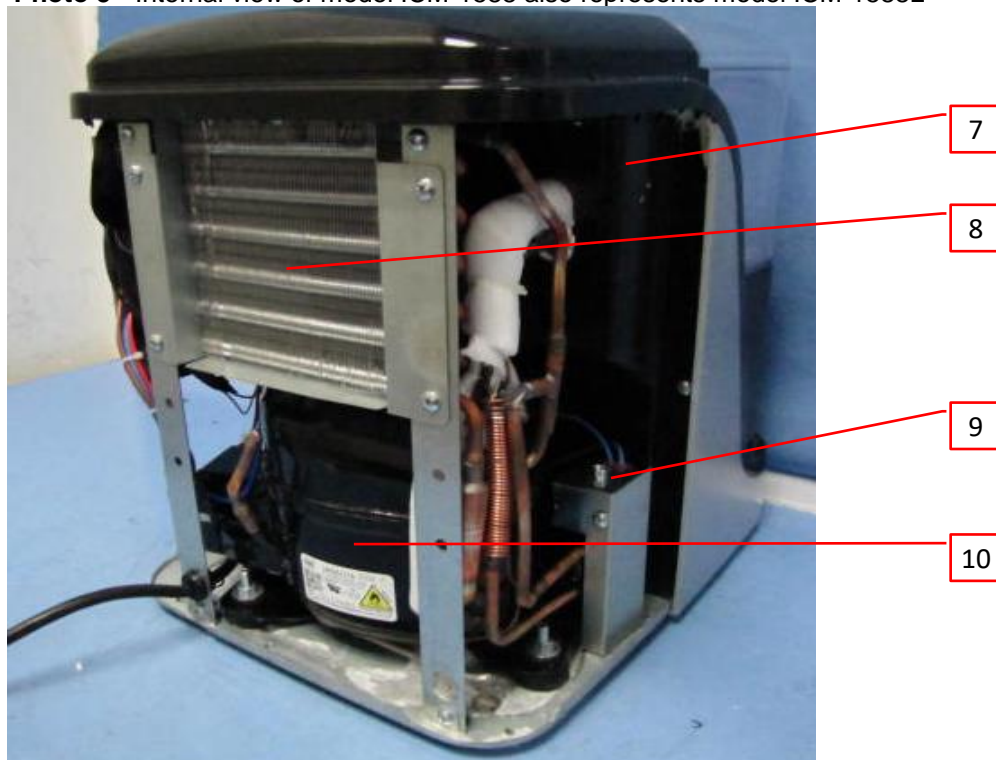
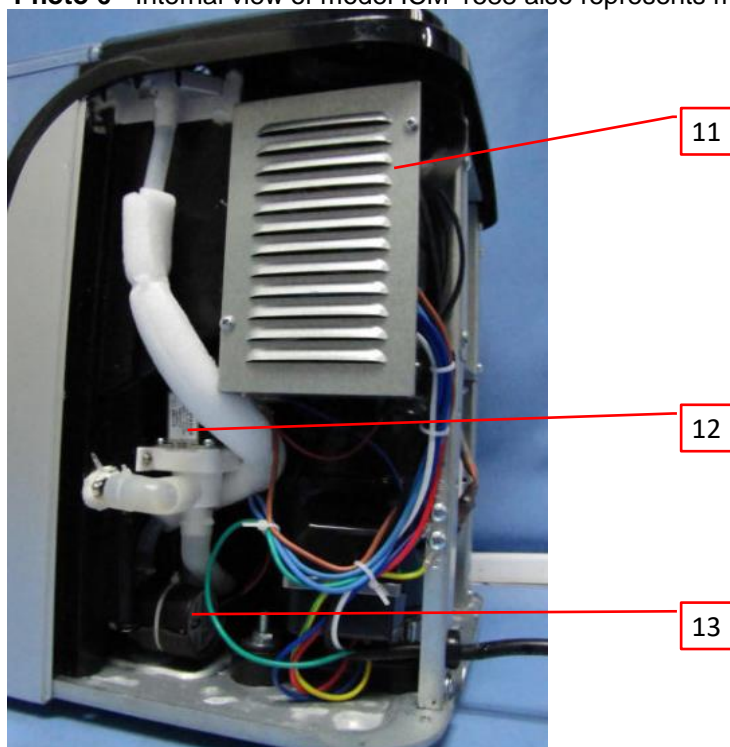


Photo 6 - Internal view of model ICM-1588 also represents model ICM-1588L



3.0 Product Photographs

Photo 7 - Internal view of model ICM-1588 also represents model ICM-1588L

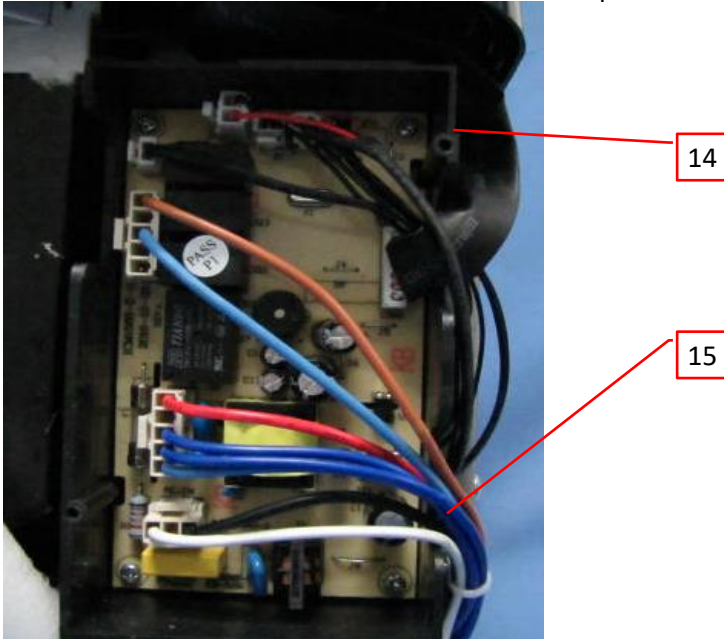
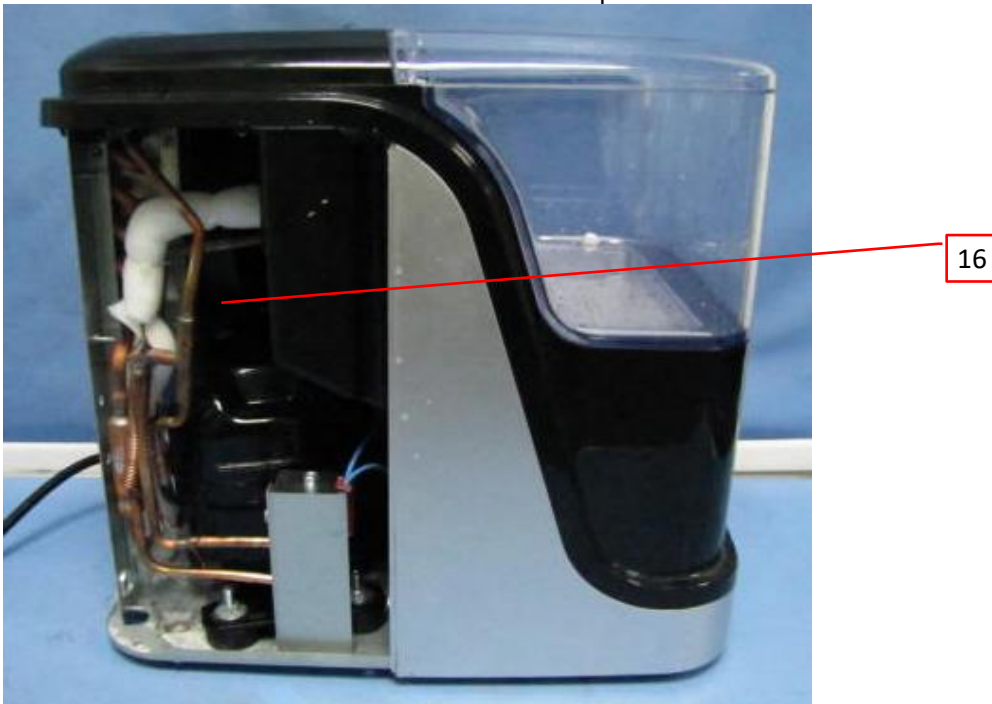


Photo 8 - Internal view of model ICM-1588 also represents model ICM-1588L



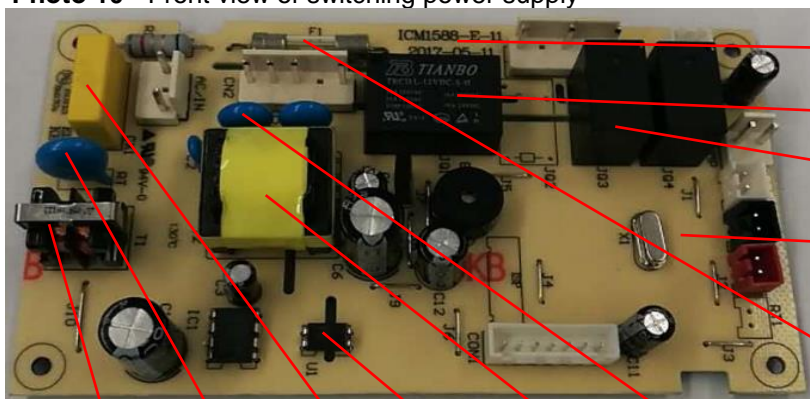
3.0 Product Photographs

Photo 9 - Internal view of model ICM-1588 also represents model ICM-1588L



18

Photo 10 - Front view of switching power supply



19

19a

19b

19c

19d

19j

19i

19h

19g

19f

19e

Photo 11 - Back view of switching power supply



3.0 Product Photographs

Photo 12 - View of water pump



Photo 13 - External view of the alternative pump.

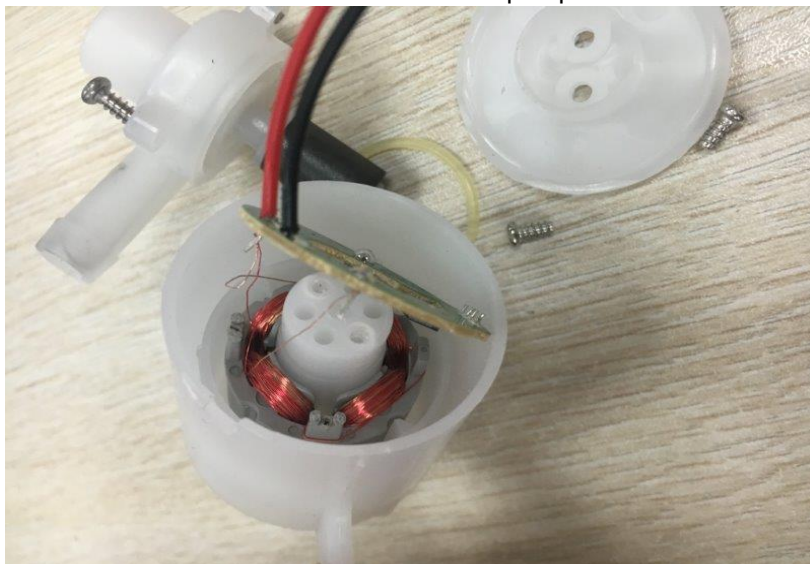


3.0 Product Photographs

Photo 14 - Internal view of the alternative pump.



Photo 15 - Internal view of the alternative pump.



3.0 Product Photographs

Photo 16 - View of transformer model EE20



Photo 17 - View of transformer model EE20



| 4.0 Critical Components | | | | | | |
|-------------------------|-----------------------|--|--|---------------------------|--|------------------------------------|
| Photo # | Item no. ¹ | Name | Manufacturer/ trademark ² | Type / model ² | Technical data and securement means | Mark(s) of conformity ³ |
| 1 | 1 | Back Enclosure | KOREA KUMHO PETROCHEMICAL CO LTD | ABS-750 | ABS, All colors, HB, HWI=4, HAI=0, 70°C. Minimum thickness 2.5 mm. with opening for ventilation. | cURus |
| 1 | 2 | Cord Sets | Various | Various | SJT, 18 AWGX3, rated 300 V, 105 °C, VW-1, length: 6-10 feet, terminated in a 3-wire attachment grounding plug, NEMA Config 5-15P. | cULus or cETLus |
| 2 | 3 | Top Enclosure | KOREA KUMHO PETROCHEMICAL CO LTD | ABS-750 | ABS, All colors, HB, HWI=4, HAI=0, 70°C. Minimum thickness 2.5 mm. | cURus |
| 2 | 4 | Nameplate and Cautionary Marking (Not Shown) | CHIYODA INTEGRE (ZHONGSHAN) CO LTD | CI-01 | Affixed to the side and back of the unit. Suitable for affixture to the plastic, max. rated temperature at least 60°C, min. rated temperature at least -20 °C, refer to Illustration 1 for details | cURus |
| | | | Various | CI-01C | Affixed to the side and back of the unit. Suitable for affixture to the plastic, max. rated temperature at least 60°C, min. rated temperature at least -20 °C, refer to Illustration 1 for details | cURus |
| 3 | 5 | Base Enclosure | Various | Various | Galvanized metal, thickness 1.0 mm, fix and hold compressor, condenser and constructive part. | NR |
| 4, 4a | 6 | Strain relief | Samsung total petrochemicals co.,ltd | 6P-4/PP hj730L | thickness 2.0mm | cURus |
| 5 | 7 | Inner supporter | KOREA KUMHO PETROCHEMICAL CO LTD | ABS-750 | ABS, All colors, HB, HWI=4, HAI=0, 70°C. Minimum thickness 2.5 mm. | cURus |
| 5 | 8 | Condenser Coil | Various | Various | Seamless copper tube mechanically bonded to configured aluminum fins.Refer to Illustration 4 for details. | NR |
| 5 | 9 | Valve for defrost | CHANGZHOU CHANGHENG LUSI ELECTRIC APPLIANCE CO LTD | DTF-2 | electric coil, 115 VAC, 50/60 Hz 3.0 MPa strength for valve body. | UR |
| | | | TIANCHANG TIANHAO REFRIGERATING EQUIPMENT FACTORY | FDF-2A | electric coil, 110 V AC, 50/60 Hz 3.0MPa strength for valve body. | cURus |
| 5 | 10 | Motor Compressor | HANGZHOU QIANJIANG REFRIGERATION GROUP CO LTD | UKN60YA | 110-120 V, 60 Hz, LRA 7.5 A. fixed on bottom of the unit by screws. | cURus |
| | | | NINGBO ANUODAN MACHINERY CO LTD | QD48Y11G | 110-120 V, 60 Hz, LRA 6.7 A. fixed on bottom of the unit by screws. | cURus |

| 4.0 Critical Components | | | | | | |
|-------------------------|-----------------------|------------------------------|--|---------------------------|---|------------------------------------|
| Photo # | Item no. ¹ | Name | Manufacturer/ trademark ² | Type / model ² | Technical data and securement means | Mark(s) of conformity ³ |
| 6 | 11 | Electrical control box cover | Various | Various | Made of metal sheet, minimum thickness 0.4 mm. | NR |
| 6 | 12 | Valve for water | JINHUA HONGCHANG ELECTRICAL EQUIPMENT CO LTD | FCD90 | 110VAC 60Hz | cURus |
| | | | Guangdong Welly Electrical Appliances Co., Ltd | FCD90A | 110VAC 60Hz | NR |
| 6 | 13 | Water Pump | Zhuhai Hao Tai Electronics Company Limited | FS35562M | DC 12 V, 0.2 A | See 5.0 |
| | | | HENG SHAN | FS60202M | DC 12 V, 0.23 A | See 5.0 |
| | | | Guangdong Welly Electrical Appliances Co., Ltd | FS60202M | DC 12 V, 0.23 A | See 5.0 |
| 7 | 14 | Electrical control box | ASIA INT'L ENTERPRISE (HONG KONG) LTD | 1210F | PC/ABS, Natural color, 5VA, 60° C. Minimum thickness 3.0 mm. | UR |
| 7 | 15 | Internal wire | Various | 1015 | 18 AWG, 600 V, 105 °C, VW-1 | cURus |
| 8 | 16 | Condenser Fan | DONGGUAN ZUNSHAN ELECTRONICS TECHNOLOGY CO LTD | DF1202512XXU YZ | DC 12 V, 0.45 A | cURus |
| | | | Guangdong Welly Electrical Appliances Co., Ltd | DC12025SEMB | DC12V, 0.45A, 5.4W. | See 5.0 |
| 8 | 17 | Capillary (Not shown) | Various | Various | Copper tube, outside diameter 1.8 mm, thickness 0.7 mm, length 1400 mm. | NR |
| 9 | 18 | Evaporator | Various | Various | Copper tube. Refer to Illustration 5.1 for details. Used for model ICM-1588. | NR |
| | | | Various | Various | Aluminum tube. Refer to Illustration 5.2 for details. Used for model ICM-1588L. | NR |
| 10 | 19 | Switching power supply | Guangdong Welly Electrical Appliances Co., Ltd | ICM1588-E-** | INPUT: AC100-120 V; OUTPUT: DC12 V, 0.7 A; Class 2 consists of following items 19a~19j. | NR |

4.0 Critical Components

| Photo # | Item no. ¹ | Name | Manufacturer/ trademark ² | Type / model ² | Technical data and securement means | Mark(s) of conformity ³ |
|---------|-----------------------|-----------------------------|---|---------------------------|---|------------------------------------|
| 10 | 19a | Relay | NINGBO TIANBO GANGLIAN ELECTRONICS CO LTD | TRCDL-12VDC-S-H | 125 V, 15 A 120 V, 1/2 HP | cURus |
| | | | MASSUSE ELECTRIC LTD | ME-23-12PS | 250 V, 16 A | cURus |
| | | | SONG CHUAN PRECISION CO LTD | 201-1AH-C M02 | 277 V, 16 A | cURus |
| | | | DONGGUAN GOLDEN ELECTRICAL APPLIANCES CO., LTD. | GN-1A-12L | 16A, 277VAC. | cURus |
| 10 | 19b | Relay | NINGBO TIANBO GANGLIAN ELECTRONICS CO LTD | TRG1 | 120 V, 10 A, 85°C | cURus |
| | | | MASSUSE ELECTRIC LTD | ME-10-012-HS | 125 V, 10 A, 85°C | cURus |
| | | | DONGGUAN GOLDEN ELECTRICAL APPLIANCES CO., LTD. | GI-1A-12D | 10 A, 125 VAC, 85°C | cURus |
| | | | SONG CHUAN PRECISION CO LTD | 835L-1A-C | 277 V, 8 A, 85°C | cURus |
| 10 | 19c | PCB | KINGBOARD LAMINATES HOLDINGS LTD | KB-3151C | V-0, 130 °C, thickness 1.6 mm | cURus |
| | | | Various | Various | V-0, 130 °C, thickness 1.6 mm | cURus |
| 10 | 19d | Fuse | Various | Various | 125/250 V, 8 A, 5.2*20 mm | cURus |
| 10 | 19e | Y Capacitor | JYH CHUNG ELECTRONICS CO LTD | JY | 300 V, 4700 pF | cURus |
| 10 | 19f | Transformer | ZhongNeng Electronic Factong | EE20 | Input: AC100-120 V; Output: DC12 V, 0.8 A. Class A. Consists of items 19f-1 to 19f-6. Refer to illustration No.7.1 for detail. | NR |
| | | | Guangdong Welly Electrical Appliances Co., Ltd | EE20 | Input: AC100-120 V; Output: DC12 V, 0.8 A. Class A. Consists of items 19f-1 to 19f-6. Refer to illustration No.7.1 for detail. | NR |
| | | | Foshan Xinbao Electrical Appliance Co., Ltd. | EE20 | Input: AC100-120 V; Output: DC12 V, 0.8 A. Class A. Consists of items 19f-1 to 19f-6. Refer to illustration No.7.1 for detail. | NR |
| 10 | 19f-1 | Primary Winding (not shown) | Various | Various | Polyurethane coated copper wire, ANSI type MW 75-C, 130°C. | UR |

4.0 Critical Components

| Photo # | Item no. ¹ | Name | Manufacturer/ trademark ² | Type / model ² | Technical data and securement means | Mark(s) of conformity ³ |
|---------|-----------------------|-------------------------------|--|---------------------------|---|------------------------------------|
| 10 | 19f-2 | Secondary Winding (not shown) | TEAMWORK INTERNATIONAL CORPORATION | TIWW-B | Triple insulated wire, 130°C. | UR |
| | | | DAH JIN TECHNOLOGY CO LTD | TLW-B(xx)(y)@ | Triple insulated wire, 130°C. | UR |
| 10 | 19f-3 | Bobbin (not shown) | CHANG CHUN PLASTICS CO LTD | T375J(G5)(G6) | PMC. Rated V-0, HWI=1, HAI=0, CTI=3, 150°C. 1.0mm thick at least. | UR |
| 10 | 19f-4 | Insulation Tape (not shown) | JINGJIANG YAHUA PRESSURE SENSITIVE GLUE CO LTD | CT-280B | Rated 130°C. | UR |
| 10 | 19f-5 | Teflon Tube (not shown) | CHANGYUAN ELECTRONICS GROUP CO LTD | CB-TT-L | Not-heat-shrinkable PTFE tubing. Rated 150V, 200°C, VW-1. Sleeved winding terminals of transformer. | cURus |
| 10 | 19f-6 | Varnish (not shown) | YUEYANG GREEN TECHNOLOGY CO LTD | JX-1150Y1 | Rated 155°C. | UR |
| 10 | 19g | Optical Isolator | EVERLIGHT ELECTRONICS CO LTD | EL817 | 5000 Vac isolation | cURus |
| | | | LITE-ON TECHNOLOGY CORP | LTV-817 | 5300 Vac isolation | cURus |
| 10 | 19h | Varistor | KESTAR ELECTRONIC (CHINA) CO LTD | MYG10-471 | 260 V/470 V, 25 A | UR |
| | | | SHANTOU HIGH-NEW TECHNOLOGY DEVELOPMNT ZONE SONGTIAN ENTERPRISE CO LTD | 10D471K | 300 V/470 V, 25 A | cURus |
| 10 | 19i | X Capacitor | SHANTOU HIGH-NEW TECHNOLOGY DEVELOPMNT ZONE SONGTIAN ENTERPRISE CO LTD | MPX | 275 V, 0.1 µF | cURus |
| 10 | 19j | Inductance | ZhongNeng Electronic Factong | ZLF09818A223 | 22 mH±20% | NR |

4.0 Critical Components

| Photo # | Item no. ¹ | Name | Manufacturer/ trademark ² | Type / model ² | Technical data and securement means | Mark(s) of conformity ³ |
|---------|-----------------------|---|--|---------------------------|-------------------------------------|------------------------------------|
| 5 | 20 | Compressor Overload Protector (not shown) | HANG ZHOU STAR SHUAIER ELECTRIC APPLIANCE CO LTD | DRB16N61A1 | Part of compressor UKN60YA. | cURus |
| | | | GUANGZHOU SENBAO ELECTRICAL APPLIANCES CO LTD | BT75-140A61D3 | Part of compressor UKN60YA. | cURus |

NOTES:

1) Not all item numbers are indicated (called out) in the photos, as their location is obvious.

2) "Various" means any type, from any manufacturer that complies with the "Technical data and securement means" and meets the "Mark(s) of conformity" can be used.

3) Indicates specific marks to be verified, which assures the agreed level of surveillance for the component. "NR" - indicates Unlisted and only visual examination is necessary. "See 5.0" indicates Unlisted components or assemblies to be evaluated periodically refer to section 5.0 for details.

5.0 Critical Unlisted CEC Components

INSULATED COIL

| Photo # | Item no. | Name | Manufacturer/Trademark | Type / model |
|---------|----------|------------|--|--------------|
| 6 | 13 | Water Pump | Zhuhai Hao Tai Electronics Company Limited | FS35562M |

Electrical Rating: DC 12 V, 0.2 A Insulation class A

Component Standard used: UL 778 and CSA C22.2 No.108

MATERIALS LIST

| Component | Manufacturer | Type/model | Dimensions/thickness/assembly information |
|-------------|----------------------------------|------------|--|
| Enclosure | Various | Various | POM, Natural color, HB, 50°C, 1.6 mm thick, 35 mm diameter, 56 mm high. including two cover. Stator and winding were enclosed by Holder and seal with resin. |
| Magnet Wire | DONG GUAN YIDA INDUSTRIAL CO LTD | 2UEW | Ø0.15 |
| Bobbin | Various | Various | PA66, All color, V-0, 130°C. Slotted into the stator. |
| PCB | Various | Various | V-0, 130 °C, thickness 1.6 mm |
| Lead Wire | Various | 1007 | 24AWG, 300V, 80°C, VW-1 |

WINDING(S) RESISTANCE

| Winding Designation | Wire Size mm | Wire Type | Turns | Volts | Amps | DC resistance (Ω) +/- 10%: |
|---------------------|--------------|-----------|-------|-------|------|----------------------------|
| Winding | Ø0.15 | 2UEW | -- | -- | -- | 20.0 Ω |

VERIFICATION PROCESS

| | | | |
|--------------------------|-----------------------------------|-------------------------------------|-----------|
| Frequency: Annual | Test Site: CEC | Number of samples to test: 1 | |
| Test Name | Test Parameters | | |
| Winding resistance | See resistance per winding above. | | |
| Dielectric Strength | Apply voltage Between | Test Voltage | Test Time |
| | Live parts to enclosure | 1000VAC | 60s |

| 5.0 Critical Unlisted CEC Components | | | | | | |
|---|--|--------------|---|-------------------------------------|------|----------------------------|
| INSULATED COIL | | | | | | |
| Photo # | Item no. | Name | Manufacturer/Trademark | Type / model | | |
| 6 | 13 | Water Pump | HENG SHAN | FS60202M | | |
| Electrical Rating: DC 12 V, 0.23 A | | | | Insulation class A | | |
| Component Standard used: UL 778 and CSA C22.2 No.108 | | | | | | |
| MATERIALS LIST | | | | | | |
| Component | Manufacturer | Type/model | Dimensions/thickness/assembly information | | | |
| Magnet Wire | YI DA | XUEWX/130 | MW75, 130 °C. | | | |
| Enclosure | Various | Various | PP all color, HB, 60 °C, 1.5 mm thick, 45 mm wide, 56 mm long, 55mm high. including two cover. Stator and winding were enclosed by Holder and seal whith resin. | | | |
| Thermal Link | HONG YUAN | VH3.96-2P-2Y | Tf = 80°C, 250 VAC, 6 A, secured to the winding by adhesive tape. | | | |
| Insulating Tape | JINGJIANG JINGYANG INSULATING PRODUCT CO LTD | JY-133 | PET, rate 130°C. Wrapped winding for insulating. | | | |
| Bobbin | YI DA | FR50(+)(f1) | PA66, all color, V-0, 130 °C, two provided, thickness 0.7 mm. Sloted into the stator. | | | |
| WINDING(S) RESISTANCE | | | | | | |
| Winding Designation | Wire Size (mm) | Wire Type | Turns | Volts | Amps | DC resistance (Ω) +/- 10%: |
| Winding | Ø0.13 | XUEWX/130 | -- | -- | -- | 20.0 Ω |
| VERIFICATION PROCESS | | | | | | |
| Frequency: Annual | Test Site: CEC | | | Number of samples to test: 1 | | |
| Test Name | Test Parameters | | | | | |
| Winding resistance | See resistance per winding above. | | | | | |
| Dielectric Strength | Apply voltage Between | | | Test Voltage | | Test Time |
| | Live parts to enclosure | | | 1000 VAC | | 60 s |
| Note: This Unlisted Component is the same as the Unlisted Component (Photo 6, Item 19) in CDR 140115004GZU-001. | | | | | | |

5.0 Critical Unlisted CEC Components

| INSULATED COIL | | | | |
|---|---|--------------|--|--------------------|
| Photo # | Item no. | Name | Manufacturer/Trademark | Type / model |
| 6 | 13 | Water Pump | Guangdong Welly Electrical Appliances Co., Ltd | FS60202M |
| Electrical Rating: DC 12 V, 0.23 A | | | | Insulation class A |
| Component Standard used: UL 778, 5th Edition and CSA C22.2 No.108-01 | | | | |
| MATERIALS LIST | | | | |
| Component | Manufacturer | Type/model | Dimensions/thickness/assembly information | |
| Lead Wire | Various | 1007 | 24 AWG, 300 V, 80 °C, VW-1. | |
| PCB | Various | Various | 130 °C, V-0, min. 1.0 mm thickness. | |
| Bobbin | DONGGUAN MINGGUAN INDUSTRY CO LTD | R1306 | 125 °C, V-0, min. 0.75mm thickness. | |
| Winding | SHANTOU SHENGANG ELECTRICAL INDUSTRIAL CO LTD | 2UEW/155 | 155 °C, φ0.13mm. | |
| Enclosure | EXXONMOBIL CHEMICAL ASIA PACIFIC | PP8285E1 | PP, all color, HB, 65 °C, 1.5 mm thickness. | |
| VERIFICATION PROCESS | | | | |
| Frequency: Annual | Test Site: CEC | | Number of samples to test: 1 | |
| Test Name | Test Parameters | | | |
| Dielectric Strength | Apply voltage Between | Test Voltage | Test Time | |
| | Live parts to enclosure | 1000 VAC | 60 s | |
| Note: This Unlisted Component is the same as the Unlisted Component (Photo 8, Item 19) in CDR 180305099GZU-001. | | | | |

5.0 Critical Unlisted CEC Components**INSULATED COIL**

| Photo # | Item no. | Name | Manufacturer/Trademark | Type / model |
|--|----------|---------------|--|--------------------|
| 8 | 16 | Condenser Fan | Guangdong Welly Electrical Appliances Co., Ltd | DC12025SEMB |
| Electrical Rating: DC12V, 0.45A, 5.4W | | | | Insulation class A |
| Component Standard used: UL507 and CSA C22.2#113 | | | | |

MATERIALS LIST

| Component | Manufacturer | Type/model | Dimensions/thickness/assembly information |
|-----------|---|---------------------|---|
| Bracket | GUANGDONG ALDEX ADVANCED PLASTICS CO., LTD. | Aldest PBT-FR630(M) | PBT, all color, V-0, 75°C, min. 1.5mm. |
| Blade | GUANGDONG ALDEX ADVANCED PLASTICS CO., LTD. | Aldest PBT-FR630(M) | PBT, all color, V-0, 75°C, min. 0.5mm. |
| Winding | SHANTOU SHENGANG ELECTRICAL INDUSTRIAL CO LTD | xUEW/155, QA-x/15 | 155 °C, Φ0.15mm |
| Bobbin | DONGGUAN MINGGUAN INDUSTRY CO LTD | R1306 | PBT, all color, rated V-0, 125 °C, min. thickness 0.75mm. |
| PCB | Various | Various | V-0, 105 °C, min. thickness 1.0 mm. |
| Lead Wire | Various | 1007 | 24AWG, 300V, 80°C, VW-1/FT1. |

VERIFICATION PROCESS

| | | | |
|--------------------------|-----------------------------------|--------------|-------------------------------------|
| Frequency: Annual | Test Site: CEC | | Number of samples to test: 1 |
| Test Name | Test Parameters | | |
| Visual inspection | See components as above | | |
| Check rated current | See rating as above | | |
| Dielectric Strength | Apply voltage Between | Test Voltage | Test Time |
| | input leads to metal foil wrapped | 500VAC | 60s |

Note: This Unlisted Component is the same as the Unlisted Component (Photo 8, Item 18) in CDR 180305099GZU-001.

6.0 Critical Features

Recognized Component - A component part, which has been previously evaluated by an accredited certification body with restrictions and must be evaluated as part of the basic product considering the restrictions as specified by the Conditions of Acceptability.

Listed Component - A component part, which has been previously Listed or Certified by an accredited Certification Organization with no restrictions and is used in the intended application within its ratings.

Unlisted Component - A part that has not been previously evaluated to the appropriate designated component standard. It may also be a Listed or Recognized component that is being used outside of its evaluated Listing or component recognition.

Critical Features/Components - An essential part, material, subassembly, system, software, or accessory of a product that has a direct bearing on the product's conformance to applicable requirements of the product standard.

Construction Details - For specific construction details, reference should be made to the photographs and descriptions. All dimensions are approximate unless specified as exact or within a tolerance. In addition to the specific construction details described in this Report, the following general requirements also apply.

1. **Spacing** - 1) In primary circuits of refrigerated compartment and air-handling compartments, minimum 3.2 mm and 6.4 mm spacing are maintained through air and over surfaces of insulating material between current-carrying parts of opposite polarity, and minimum 6.4 mm spacing between current-carrying parts and accessible dead metal parts or enclosure. 2) In non-refrigerated and non air-handling compartments, minimum 1.6 mm spacing is maintained through air and over surfaces of insulating material between current-carrying parts of opposite polarity, and minimum 6.4 mm spacing between current-carrying parts and accessible dead metal parts or enclosure.
2. **Mechanical Assembly** - Components such as switches, fuseholders, connectors, wiring terminals and display lamps are mounted and prevented from shifting or rotating by the use of lockwashers, starwashers, or other mounting format that prevents turning of the component.
3. **Corrosion Protection** - All ferrous metal parts are protected against corrosion by painting, plating or the equivalent.
4. **Accessibility of Live Parts** - All uninsulated live parts in primary circuitry are housed within a metal cover and non-metallic enclosure constructed with no openings other than those specifically described in Sections 4 and 5.
5. **Grounding** - All exposed dead-metal parts and all dead-metal parts within the enclosure that are exposed are connected to the grounding lead of the power supply cord.
6. **Internal Wiring** - Internal wiring is routed away from sharp or moving parts. Internal wiring leads terminating in soldered connections are made mechanically secure prior to soldering. Recognized Component separable (quick disconnect) connectors of the positive detent type, closed loop connectors, or other types specifically described in the text of this report are also acceptable as internal wiring terminals. At points where internal wiring passes through metal walls or partitions, the wiring insulation is protected against abrasion or damage by plastic bushings or grommets.
7. **Schematics** - Refer to Illustration No. 3 for schematics requiring verification during Field Representative Inspection Audits.
8. **Markings** - The product is marked on a labeling system as described in item no. 4 of Section 4.0 as follows:
 - applicant's name or brand names
 - model number
 - date of manufacture (mm/dd/yy)
 - electrical ratings (volts, ampere and frequency, refer to Section 2.0 for details)
 - refrigerant type and amount, high side and low side pressure, refer to Section 2.0 for details
9. **Cautionary Markings** - The product is marked on a labeling system as described in item no. 4 of Section 4.0. Refer to Illustration No. 1.1~1.2 for the layout.
10. **Installation, Operating and Safety Instructions** - Instructions for installation and use of this product are provided by the manufacturer. Refer to Illustration No. 2 for the layout.
12. **Transformer** - Supplier records must be provided that indicate the received shipment of transformers (section 4.0, item 19f) was constructed as indicated in Illustrations Nos. 7.1. These records must be available at the factory for inspection on every received shipment.

7.0 Illustrations

Illustration 1.1 - Cautionary Marking

1a) On compressor



Note: Triangle warning symbol height at least 15 mm.

1b) Near machine compartment

DANGER – RISK OF FIRE OR EXPLOSION. FLAMMABLE REFRIGERANT USED. TO BE REPAIRED ONLY BY TRAINED SERVICE PERSONNEL. DO NOT PUNCTURE REFRIGERANT TUBING.↵

DANGER – RISQUE DE FEU OU D'EXPLOSION. LE FRIGORIGÈNE EST INFLAMMABLE. CONFIER LES RÉPARATIONS À UN TECHNICIEN SPÉCIALISÉ. NE PAS PERFORER LA TUBULURE CONTENANT LE FRIGORIGÈNE.↵

CAUTION – RISK OF FIRE OR EXPLOSION. FLAMMABLE REFRIGERANT USED. CONSULT REPAIR MANUAL/OWNER'S GUIDE BEFORE ATTEMPTING TO SERVICE THIS PRODUCT. ALL SAFETY PRECAUTIONS MUST BE FOLLOWED.↵

ATTENTION – RISQUE DE FEU OU D'EXPLOSION. LE FRIGORIGÈNE EST INFLAMMABLE. CONSULTER LE MANUEL DU PROPRIÉTAIRE/GUIDE DE RÉPARATION AVANT DE TENTER UNE RÉPARATION. TOUTES LES MESURES DE SÉCURITÉ DOIVENT ÊTRE RESPECTÉES.↵

Note: Word height at least 6.4 mm for warning label.

2) Near evaporator

DANGER – RISK OF FIRE OR EXPLOSION. FLAMMABLE REFRIGERANT USED. DO NOT USE MECHANICAL DEVICES TO DEFROST REFRIGERATOR. DO NOT PUNCTURE REFRIGERANT TUBING.↵

DANGER – RISQUE DE FEU OU D'EXPLOSION. LE FRIGORIGÈNE EST INFLAMMABLE. NE PAS UTILISER D' APPAREILS MÉCANIQUES POUR DÉGIVRER LE RÉFRIGÉRATEUR. NE PAS PERFORER LA TUBULURE CONTENANT LE FRIGORIGÈNE.↵

Note: Word height at least 6.4 mm for warning label.

3) On the exterior

CAUTION – RISK OF FIRE OR EXPLOSION. DISPOSE OF PROPERLY IN ACCORDANCE WITH FEDERAL OR LOCAL REGULATIONS. FLAMMABLE REFRIGERANT USED.↵

ATTENTION – RISQUE DE FEU OU D'EXPLOSION. ÉLIMINER CONFORMÉMENT AUX RÈGLEMENTS FÉDÉRAUX OU LOCAUX. LE FRIGORIGÈNE EST INFLAMMABLE.↵

Note: Word height at least 6.4 mm for warning label.

7.0 Illustrations

Illustration 1.2 - Cautionary Marking

4) On carton except the bottom:



DANGER – RISK OF FIRE OR EXPLOSION. FLAMMABLE REFRIGERANT USED. DO NOT USE MECHANICAL DEVICES TO DEFROST REFRIGERATOR. DO NOT PUNCTURE REFRIGERANT TUBING.

DANGER – RISK OF FIRE OR EXPLOSION. FLAMMABLE REFRIGERANT USED. TO BE REPAIRED ONLY BY TRAINED SERVICE PERSONNEL. DO NOT PUNCTURE REFRIGERANT TUBING.

CAUTION – RISK OF FIRE OR EXPLOSION. FLAMMABLE REFRIGERANT USED. CONSULT REPAIR MANUAL/OWNER'S GUIDE BEFORE ATTEMPTING TO SERVICE THIS PRODUCT. ALL SAFETY PRECAUTIONS MUST BE FOLLOWED.

CAUTION – RISK OF FIRE OR EXPLOSION. DISPOSE OF PROPERLY IN ACCORDANCE WITH FEDERAL OR LOCAL REGULATIONS. FLAMMABLE REFRIGERANT USED.

CAUTION – RISK OF FIRE OR EXPLOSION DUE TO PUNCTURE OF REFRIGERANT TUBING; FOLLOW HANDLING INSTRUCTIONS CAREFULLY. FLAMMABLE REFRIGERANT USED.

CAUTION – RISK OF FIRE OR EXPLOSION DUE TO FLAMMABLE REFRIGERANT USED. FOLLOW HANDLING INSTRUCTIONS CAREFULLY IN COMPLIANCE WITH GOVERNMENT REGULATIONS.

DANGER – RISQUE DE FEU OU D'EXPLOSION. LE FRIGORIGÈNE EST INFLAMMABLE. NE PAS UTILISER D'APPAREILS MÉCANIQUES POUR DÉGIVRER LE RÉFRIGÉRATEUR. NE PAS PERFORER LA TUBULURE CONTENANT LE FRIGORIGÈNE.

DANGER – RISQUE DE FEU OU D'EXPLOSION. LE FRIGORIGÈNE EST INFLAMMABLE. CONFIER LES RÉPARATIONS À UN TECHNICIEN SPÉCIALISÉ. NE PAS PERFORER LA TUBULURE CONTENANT LE FRIGORIGÈNE.

ATTENTION – RISQUE DE FEU OU D'EXPLOSION. LE FRIGORIGÈNE EST INFLAMMABLE. CONSULTER LE MANUEL DU PROPRIÉTAIRE/GUIDE DE RÉPARATION AVANT DE TENTER UNE RÉPARATION. TOUTES LES MESURES DE SÉCURITÉ DOIVENT ÊTRE RESPECTÉES.

ATTENTION – RISQUE DE FEU OU D'EXPLOSION. ÉLIMINER CONFORMÉMENT AUX RÈGLEMENTS FÉDÉRAUX OU LOCAUX. LE FRIGORIGÈNE EST INFLAMMABLE.

ATTENTION – RISQUE DE FEU OU D'EXPLOSION SI LA TUBULURE CONTENANT LE FRIGORIGÈNE EST PERFORÉE ; SUIVRE LES INSTRUCTIONS DE MANUTENTION AVEC SOIN. LE FRIGORIGÈNE EST INFLAMMABLE.

ATTENTION - RISQUE DE FEU OU D'EXPLOSION. LE FRIGORIGÈNE EST INFLAMMABLE. SUIVEZ LES INSTRUCTIONS DE MANIPULATION BIEN EN CONFORMITÉ AVEC LA RÉGLEMENTATION DU GOUVERNEMENT.

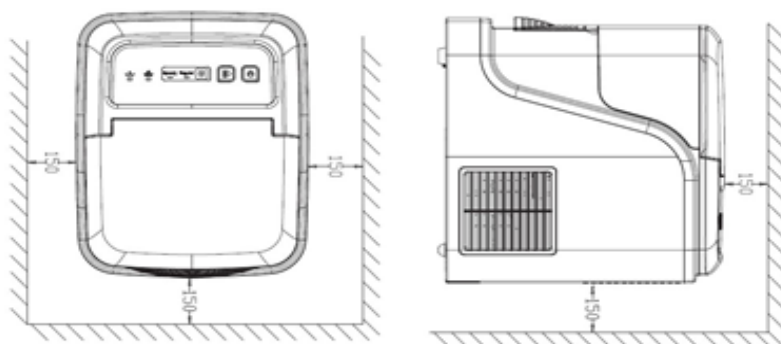
Note: Triangle warning symbol height at least 15 mm.

7.0 Illustrations

Illustration 2 - Important instruction

22. Caution: Flammable refrigerant used! When handling, moving and use of the ice maker, make sure to avoid either damaging the refrigerant tubing, or increasing the risk of a leak.↵
23. The ice maker is to be installed in accordance with the Safety Standard for Refrigeration Systems, ASHRAE 15.↵
24. The ice maker shall not be installed in corridors or hallways of public buildings.↵

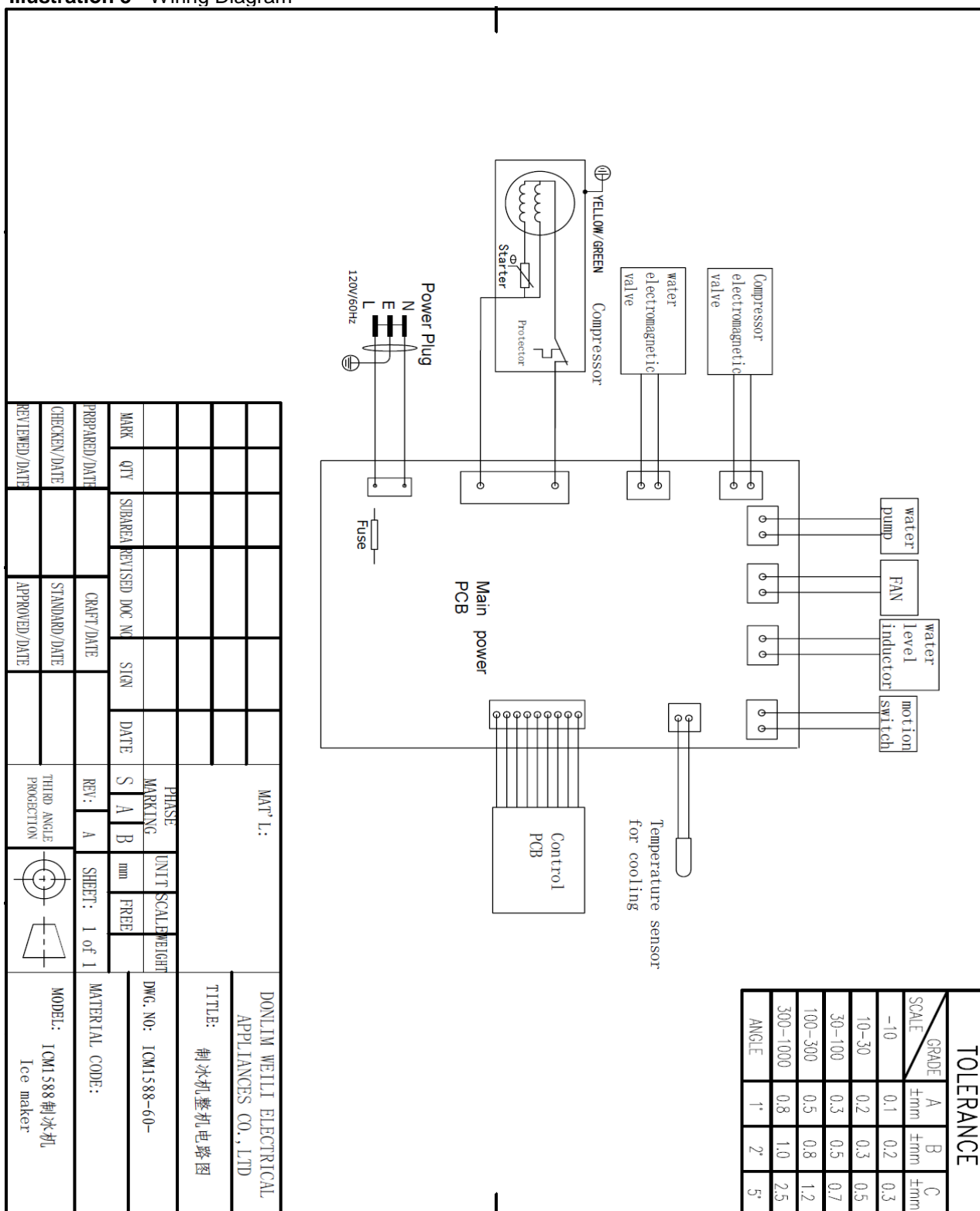
Notice :



The machine should be upright to place on the horizontal plane. To ensure the machine ventilate normally, it is important to set 150mm room on top, sides and back. Do not place the machine next to the roast oven, radiate or other heat objects.

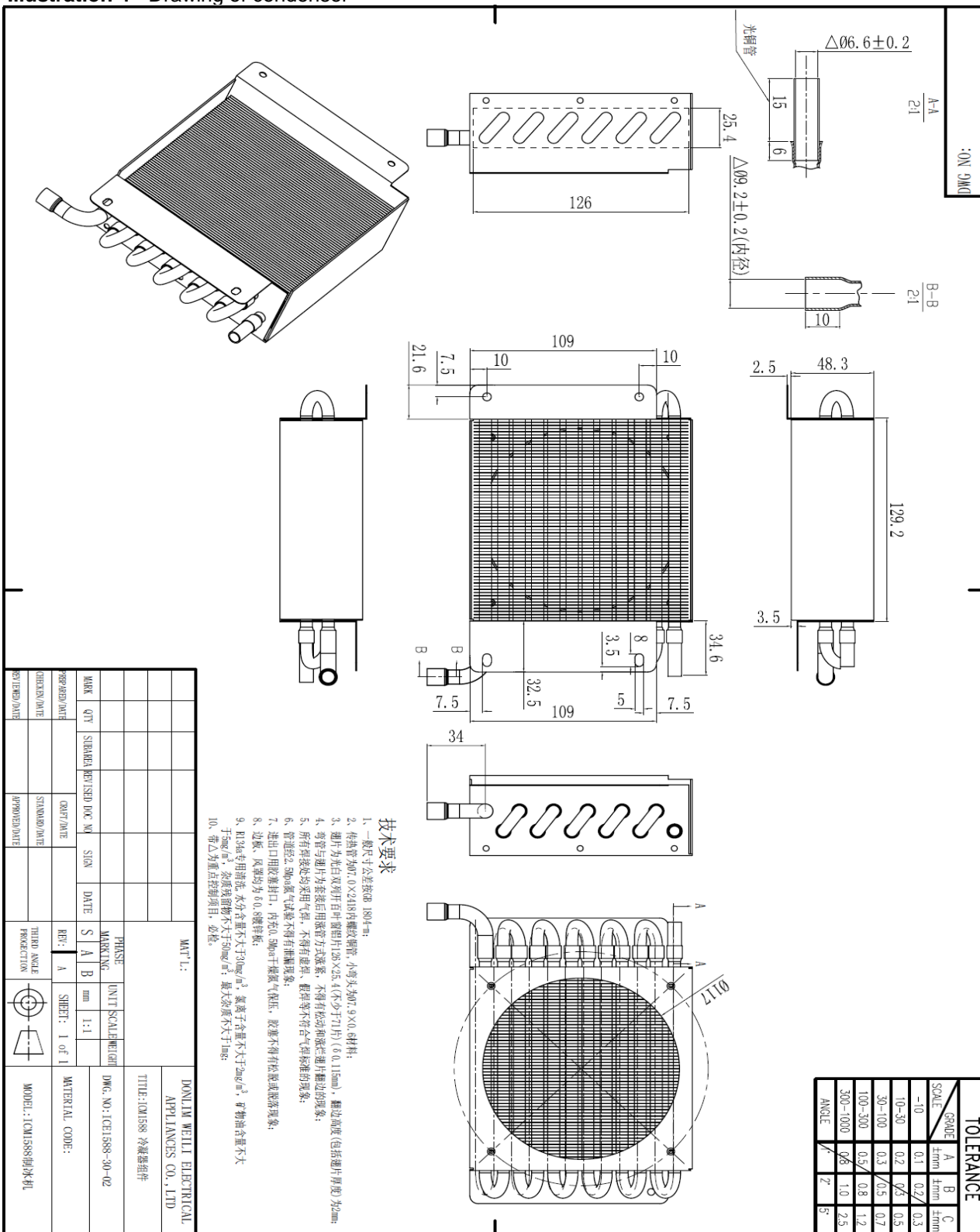
7.0 Illustrations

Illustration 3 - Wiring Diagram



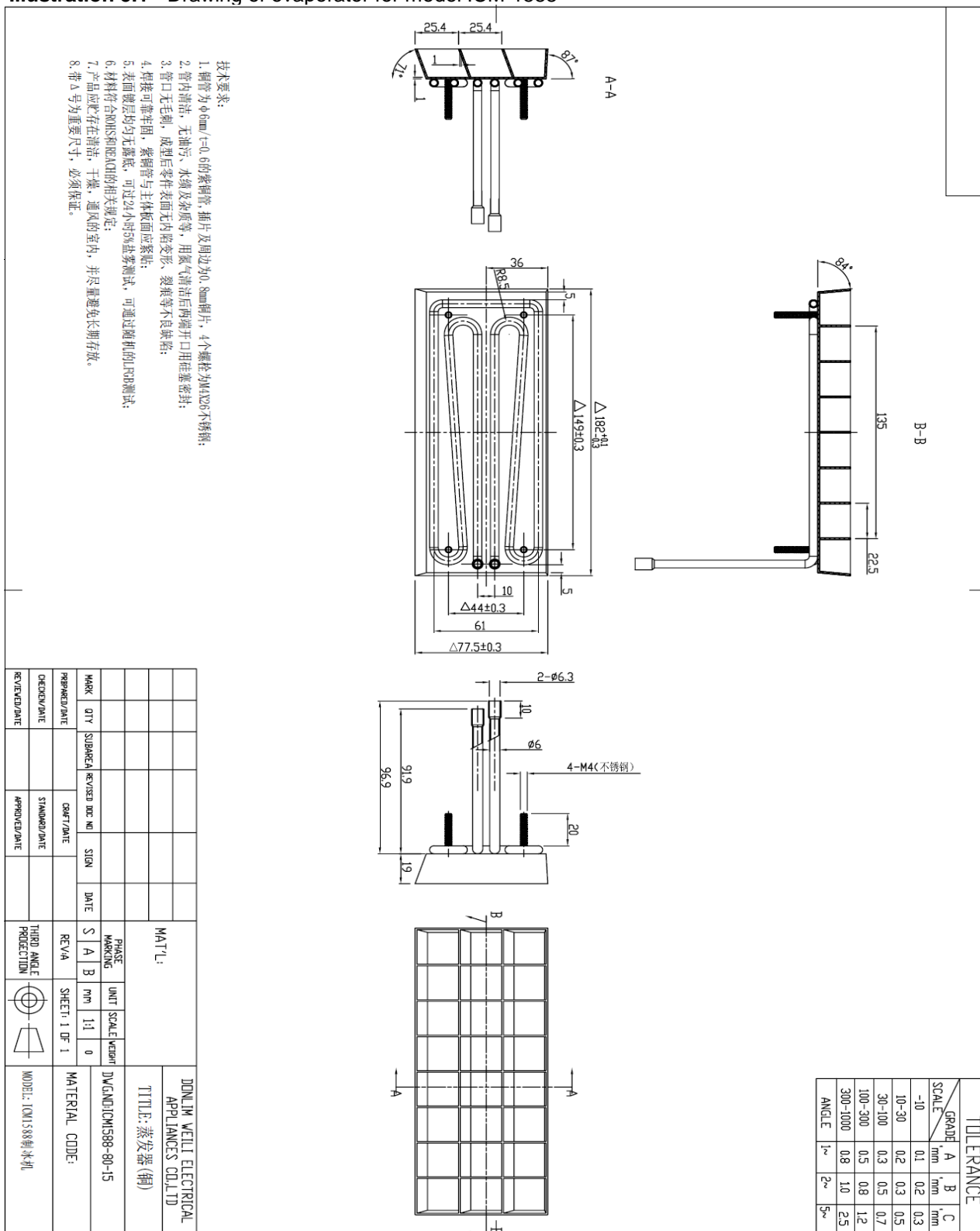
7.0 Illustrations

Illustration 4 - Drawing of condenser



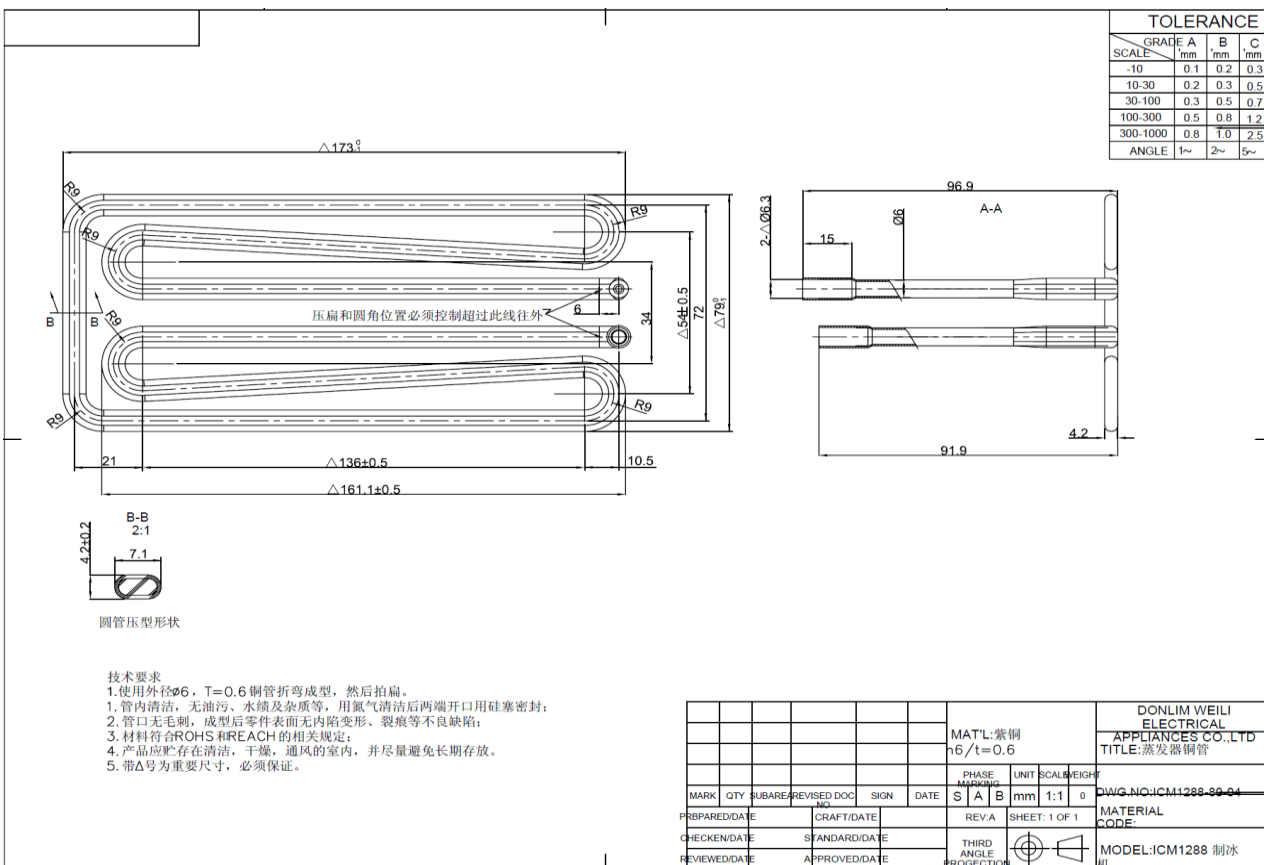
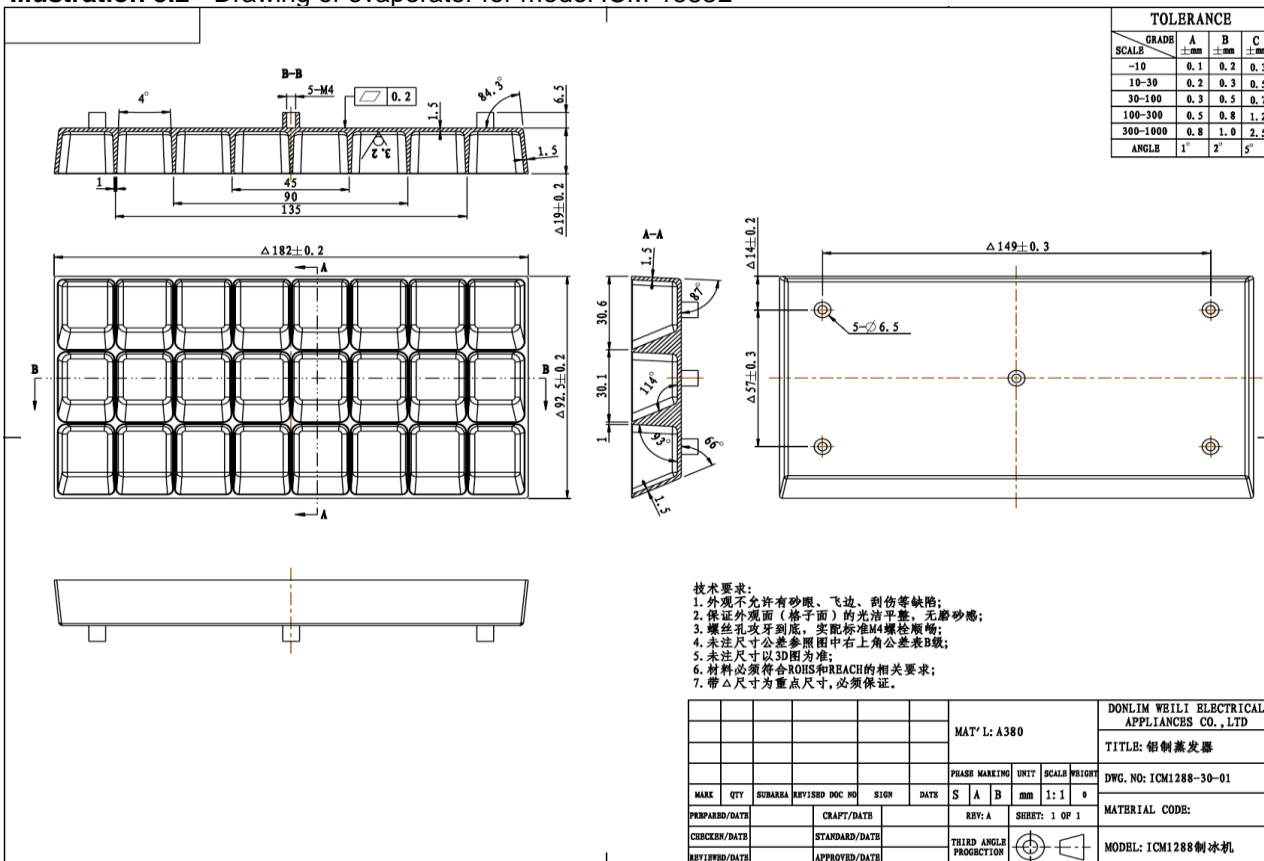
7.0 Illustrations

Illustration 5.1 - Drawing of evaporator for model ICM-1588



7.0 Illustrations

Illustration 5.2 - Drawing of evaporator for model ICM-1588L



7.0 Illustrations**Illustration 6.1 - Marking of ML "Nostalgia Products, LLC"**

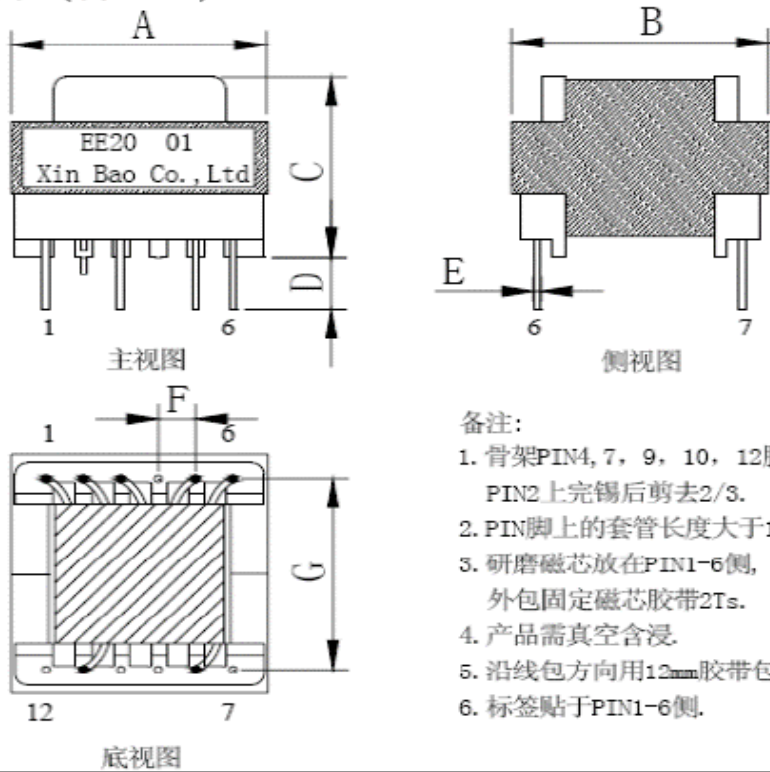
| | |
|--|--|
| Item: Ice Maker Model Number: ICMCC33 Capacity: 2.5L Voltage: AC 110-120V Frequency: 60Hz Current: 2.5A Refrigerant Weight: R600a (1.06 OZ) High-side Pressure 220psig. Low-side Pressure 130psig. Date Code: WWYY Nostalgia Products, LLC | CAUTION – RISK OF FIRE OR EXPLOSION. DISPOSE OF PROPERLY IN ACCORDANCE WITH FEDERAL OR LOCAL REGULATIONS. FLAMMABLE REFRIGERANT USED. |
| | ATTENTION – RISQUE DE FEU OU D'EXPLOSION. ÉLIMINER CONFORMÉMENT AUX RÈGLEMENTS FÉDÉRAUX OU LOCAUX. LE FRIGORIGÈNE EST INFLAMMABLE. |

Note: The marking for models in MULTIPLE LISTEE 1 MODELS are the same as above except model number.

7.0 Illustrations

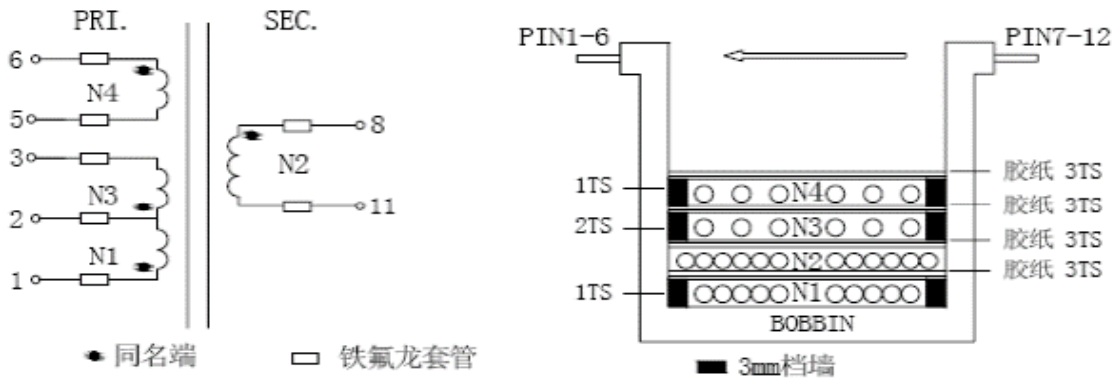
Illustration 7.1 - Specification of transfromer model "EE20"

1. 外形尺寸图：(单位：mm)



| A | B | C | D | E | F | G | H |
|----------|----------|----------|---------|---------|---------|----------|---|
| 22.0MAX. | 22.0MAX. | 17.0MAX. | 4.0±0.5 | 0.6±0.1 | 3.0±0.3 | 16.5±0.5 | |

2. 电气原理与结构图：



3. 线圈规格：

| 绕组 | 线 材 | 匝 数 | 起 点 | 终 点 | 胶 纸 | 备 注 |
|----------------|----------------|------|------|-----|-----|------|
| N1 | 2UEW-B Φ0.15mm | 65Ts | 1-2 | | 3Ts | 密绕一层 |
| N2 | TILW-B Φ0.40mm | 14Ts | 8-11 | | 3Ts | 密绕一层 |
| N3 | 2UEW-B Φ0.15mm | 65Ts | 2-3 | | 3Ts | 密绕一层 |
| N4 | 2UEW-B Φ0.15mm | 14Ts | 6-5 | | 3Ts | 疏绕 |
| ※ PIN1-6 脚朝机台. | | | | | | |

8.0 Test Summary

| | | | | | |
|-------------------|-------------------------------|-----------|-----------|-------------|--------------------|
| Evaluation Period | Feb. 27, 2017 ~ Jun. 16, 2017 | | | Project No. | 170227088GZU |
| Sample Rec. Date | Feb. 27, 2017 | Condition | Prototype | Sample ID. | S170227088-001~006 |

| | |
|---------------|--|
| Test Location | Intertek Testing Services Shenzhen Ltd. Guangzhou Branch Block E, No.7-2 Guang Dong Software Science Park, Caipin Road, Guangzhou Science City, GETDD, Guangzhou, China |
|---------------|--|

| | |
|----------------|-------------|
| Test Procedure | Testing Lab |
|----------------|-------------|

Determination of the result includes consideration of measurement uncertainty from the test equipment and methods. The product was tested as indicated below with results in conformance to the relevant test criteria.

The following tests were performed:

| Test Description | UL 563 Issued: 2009/07/31 Ed: 8 Rev: 2013/11/29 Clause | CSA C22.2#120 Issued: 2013/03/01 Ed: 4 Clause | -- |
|---|---|--|----|
| Leakage Current Test – Cord-Connected Ice Makers / Leakage Current | 33 | 6.9 | -- |
| Input Test / Rating | 36 | 6.3 | -- |
| Temperature and Pressure Test / Temperature (Normal load) | 37 | 6.4 | -- |
| Starting Test | 38 | 6.13 | -- |
| Dielectric Voltage-withstand Test / Dielectric Strength | 39 | 6.10 | -- |
| Condenser Fan Motor Failure Test / Temperature (Abnormal Operation) | 40 | 6.11 | -- |
| Stability Test | 43 | 6.29 | -- |
| Overvoltage and Undervoltage Tests | 47 | -- | -- |
| Insulation Resistance Test | 48 | -- | -- |
| Strength Tests - Pressure Containing Components / Pressure Tests | 51 | 6.26 | -- |
| Strain Relief Test / Strain Relief (Supply Cord) | 52 | 6.24 | -- |
| Burnout Tests – Electromagnetic Components | 57A | -- | -- |
| Leakage Test | SA5.1 | E.5.1 | -- |
| Temperature test | SA5.3 | E.5.4 | -- |
| Impact test (Enclosures) | -- | 6.16 | -- |
| Moisture Absorption Resistance | -- | 6.20 | -- |
| Test Description | UL 1310, 6th Ed., Rev. Dec. 12, 2014 Clause | CSA C22.2 No. 223-15, Rev. Dec., 2015 Clause | -- |
| Maximum Output Voltage Test / Open-Circuit Secondary Voltage | 28 | 6.3.1 | -- |
| Output Current and Power Test / Maximum Output Current and Power | 30 | 6.3.4 | -- |
| Dielectric Voltage Withstand Test / Dielectric Strength | 34 | 6.5 | -- |
| Abnormal Tests – Output Loading | 39.2 | -- | -- |
| Abnormal Tests – Component Breakdown | 39.7 | 6.8 | -- |
| Secondary Circuit Protection | -- | 6.7 | -- |
| Test Description | UL778, 5th Edition, Rev. Aug. 25, 2011 Clause | -- | -- |
| Abnormal Operation Test - Dry operation | 48.1 | -- | -- |

| | | | |
|-------------------|-----------------------------|-------------|--------------|
| Evaluation Period | May 2, 2018 to May 14, 2018 | Project No. | 180502075GZU |
|-------------------|-----------------------------|-------------|--------------|

Due to the previous testing, no additional testing was necessary for Ice Makers [UL 563:2009 Ed.8+R:12Jan2017].

8.0 Test Summary

| | | | |
|--|-----------------------------|-------------|--------------|
| Evaluation Period | Jul 20, 2021 to Aug 6, 2021 | Project No. | 210720082GZU |
| Due to the previous testing, no additional testing was necessary for standard "Ice Makers [UL 563:2009 Ed.8+R:30Aug2018]". | | | |

| | | | |
|--|-------------------------------|-------------|--------------|
| Evaluation Period | Feb. 13, 2023 to Mar 22, 2023 | Project No. | 230213013GZU |
| Due to the previous testing, no additional testing was necessary for standard "Ice Makers [UL 563:2009 Ed.8+R:26May2021]". | | | |

| | | | | | |
|-------------------|--|-----------|-----------|-------------|----------------|
| Evaluation Period | Jul. 19, 2023 ~ Aug. 29, 2023 | | | Project No. | 230719169GZU |
| Sample Rec. Date | 19-Jul-2023 | Condition | Prototype | Sample ID. | S230719169-003 |
| Test Location | Intertek Testing Services Shenzhen Ltd. Guangzhou Branch Room101/301/401/102/202/302/402/502/602/702/802, No. 7-2, Caipin Road, Huangpu District, Guangzhou, Guangdong, China | | | | |
| Test Procedure | Testing Lab | | | | |

Determination of the result includes consideration of measurement uncertainty from the test equipment and methods. The product was tested as indicated below with results in conformance to the relevant test criteria.

The following tests were performed:

| Test Description | UL 563:2009 Ed.8+R:26May20 21 /Clause | CSA C22.2#120:201 3 Ed.4 /Clause | -- |
|---|--|---|----|
| Leakage Current Test – Cord-Connected Ice Makers / Leakage Current | 33 | 6.9 | -- |
| Input Test / Rating | 36 | 6.3 | -- |
| Temperature and Pressure Test / Temperature (Normal load) | 37 | 6.4 | -- |
| Starting Test | 38 | 6.13 | -- |
| Dielectric Voltage-withstand Test / Dielectric Strength | 39 | 6.10 | -- |
| Condenser Fan Motor Failure Test / Temperature (Abnormal Operation) | 40 | 6.11 | -- |
| Temperature test | SA5.3 | E.5.3 | -- |



| | | | | | |
|------------------|--|-----------|-----------|-------------|--------------------|
| | Oct. 26, 2023 to Jan. 6, 2024 | | | Project No. | 231026162GZU |
| Sample Rec. Date | 26-Oct-2023 | Condition | Prototype | Sample ID. | S231026162-001~003 |
| Test Location | Intertek Testing Services Shenzhen Ltd. Guangzhou Branch Room101/301/401/102/202/302/402/502/602/702/802, No. 7-2, Caipin Road, Huangpu District, Guangzhou, Guangdong, China | | | | |
| Test Procedure | Testing Lab | | | | |

Determination of the result includes consideration of measurement uncertainty from the test equipment and methods. The product was tested as indicated below with results in conformance to the relevant test criteria.

The following tests were performed:

| Test Description | UL 563:2009 Ed.8+R:26May20 21 /Clause | CSA C22.2#120:201 3 Ed.4 /Clause | -- |
|---|--|---|----|
| Leakage Current Test – Cord-Connected Ice Makers / Leakage Current | 33 | 6.9 | -- |
| Input Test / Rating | 36 | 6.3 | -- |
| Temperature and Pressure Test / Temperature (Normal load) | 37 | 6.4 | -- |
| Starting Test | 38 | 6.13 | -- |
| Dielectric Voltage-withstand Test / Dielectric Strength | 39 | 6.10 | -- |
| Condenser Fan Motor Failure Test / Temperature (Abnormal Operation) | 40 | 6.11 | -- |
| Strength Tests - Pressure Containing Components / Pressure Tests | 51 | 6.26 | -- |

| 8.0 Test Summary | | | |
|--|-------|-------|----|
| Strain Relief Test / Strain Relief (Supply Cord) | 52 | 6.24 | -- |
| Temperature test | SA5.3 | E.5.3 | -- |

| 8.1 Signatures | | | |
|--|---|--------------|---|
| A representative sample of the product covered by this report has been evaluated and found to comply with the applicable requirements of the standards indicated in Section 1.0. | | | |
| Completed by: | Steve Yuan | Reviewed by: | Lock Li |
| Title: | Engineer | Title: | Project Engineer |
| Signature: |  | Signature: |  |

9.0 Correlation Page For Multiple Listings

The following products, which are identical to those identified in this report except for model number and Listee name, are authorized to bear the ETL label under provisions of the Intertek Multiple Listing Program.

| | |
|--------------|--|
| BASIC LISTEE | Guangdong Welly Electrical Appliances Co., Ltd |
| Address | Fusha Industrial Park, Fusha Town, ZHONGSHAN CITY, Guangdong Province |
| Country | China |
| Product | Ice Maker |

| | |
|-------------------|--|
| MULTIPLE LISTEE 1 | Nostalgia Products, LLC |
| Address | 1471 Partnership Drive Green Bay, WI 54304 |
| Country | USA |
| Brand Name | Nostalgia Products, LLC |

| | |
|-------------------------|--|
| ASSOCIATED MANUFACTURER | Guangdong Welly Electrical Appliances Co., Ltd |
| Address | Fusha Industrial Park, Fusha Town, ZHONGSHAN CITY, Guangdong Province |
| Country | China |

| MULTIPLE LISTEE 1 MODELS | BASIC LISTEE MODELS |
|--|---------------------|
| ICMCC33 may be followed by one to ten characters. | ICM-1588 |
| ICMCC26 may be followed by one to ten characters. | ICM-1588L |
| ICEC33SB, ICEC33 may be followed by one to ten characters. | ICM-1588L |

10.0 General Information

The Applicant and Manufacturer have agreed to produce, test and label ETL Listed products in accordance with the requirements of this Report. The Manufacturer has also agreed to notify Intertek and to request authorization prior to using alternate parts, components or materials.

COMPONENTS

Components used shall be those itemized in this Intertek report covering the product, including any amendments and/or revisions.

LISTING MARK

The ETL Listing mark applied to the products shall either be separable in form, such as labels purchased from Intertek, or on a product nameplate or other media only as specifically authorized by Intertek. Use of the mark is subject to the control of Intertek.

The mark must include the following four items:

- 1) applicable country identifiers "US" and/or "C" or "US", "C" and "EU"
- 2) the word "Listed" or "Classified" or "Recognized Component" (whichever is appropriate)
- 3) a control number issued by Intertek
- 4) a product descriptor that identifies the standards used for certification. Example:

For US standards, the words, "Conforms to" shall appear with the standard number along with the word, "Standard" or "Std." Example: "Conforms to ANSI/UL Std. XX."

For Canadian standards, the words "Certified to CAN/CSA Standard CXX No. XX." shall be used, or abbreviated, "Cert. to CAN/CSA Std. CXX No. XX."

Can be used together when both standards are used.

If all standards on the ATM have the same standard title, the shared title or its abbreviation may be used in place of the examples above. Example: "Medical Electrical Equipment" or "MEE"; "Information Technology Equipment" or "ITE"; "Audio/Video Information And Communication Technology Equipment" or "A/V ICTE".

Note: A facsimile must be submitted to Intertek, Attn: Follow-up Services for approval prior to use.

The facsimile need not have a control number. A control number will be issued **after signed Certification Agreements** have been received by the Follow-up Services office, approval of the facsimile of your proposed Listing Mark, satisfactory completion of the Listing Report, and scheduling of a factory assessment in your facility.

MANUFACTURING AND PRODUCTION TESTS

Manufacturing and Production Tests shall be performed as required in this Report.

FOLLOW-UP SERVICE

Periodic unannounced audits of the manufacturing facility (and any locations authorized to apply the mark) shall be scheduled by Intertek. An audit report shall be issued after each visit. Special attention will be given to the following:

1. Conformance of the manufactured product to the descriptions in this Report.
2. Conformance of the use of the ETL mark with the requirements of this Report and the Certification Agreement.
3. Manufacturing changes.
4. Performance of specified Manufacturing and Production Tests.

In the event that the Intertek representative identifies non-conformance(s) to any provision of this Report, the Applicant shall take one or more of the following actions:

1. Correct the non-conformance.
2. Remove the ETL Mark from non-conforming product.
3. Contact the issuing product safety evaluation center for instructions.

10.1 Evaluation of Unlisted Components

Because Unlisted Components are uncontrolled, and they do not fall under a third party follow up program, Intertek may require these components to be tested and/or evaluated at least once annually, more often for certain components, as part of the independent certification process. The Unlisted Components in Section 5.0 require testing and/or evaluation as indicated.

The Applicant will be notified, in writing, via the applicable contact methods, as defined in Section 1.0, when these components must be selected and sent to Component Evaluation Center (CEC) for re-evaluation.

Due to particular testing requirements, some components may be requested to be shipped to specific labs. Thus, specific shipment destination(s) for each sample will be provided in the written notification.

Managing CEC Location:

Intertek Testing Services Shenzhen Limited Guangzhou Branch

ETL Component Evaluation Center

Room 101/301/401/102/202/302/402/502/602/702/802, No. 7-2, Caipin Road, Huangpu District

Guangzhou, Guangdong, China

Attn: Ms. Joey Kuang

Sample Disposition: Due to the destructive nature of the testing, all samples will be discarded at the conclusion of testing unless, the manufacturer specifically requests the return of the samples. The request for return must accompany the initial component shipment.

11.0 Manufacturing and Production Tests

The manufacturer agrees to conduct the following Manufacturing and Production Tests as specified:

Required Tests

Dielectric Voltage Withstand Test
Grounding Continuity Test
Pressure Tests For Leakage and Strength

11.1 Dielectric Voltage Withstand Test

Method

One hundred percent of production of the products covered by this Report shall be subjected to a routine production line dielectric withstand test.

The test shall be conducted on products, which are fully assembled. Prior to applying the test potential, all switches, contactors, relays, etc., should be closed so that all primary circuits are energized by the test potential. If all primary circuits cannot be tested at one time, then separate applications of the test potential shall be made.

The test voltage specified below shall be applied between primary circuits and accessible dead-metal parts. The test voltage may be gradually increased to the specified value but must be maintained at the specified value for one second or one minute as required.

Test Equipment

The test equipment shall incorporate a transformer with an essentially sinusoidal output, a means to indicate the applied test potential, and an audible and/or visual indicator of dielectric breakdown.

The test equipment shall incorporate a voltmeter in the output circuit to indicate directly the applied test potential if the rated output of the test equipment is less than 500VA.

If the rated output of the test equipment is 500VA or more, the applied test potential may be indicated by either:

- 1 - a voltmeter in the primary circuit;
- 2 - a selector switch marked to indicate the test potential; or
- 3 - a marking in a readily visible location to indicate the test potential for test equipment having a single test potential output.

In cases 2 and 3, the test equipment shall include a lamp or other visual means to indicate that the test potential is present at the test equipment output. All test equipment shall be maintained in current calibration.

Products Requiring Dielectric Voltage Withstand Test:

| Product | Test Voltage | Test Time |
|--|---------------|-----------|
| All products covered by this Report. | 1000VAC | 60 s |
| | or 1200VAC | 1 s |
| One sample from each shipment of Section 4.0 item 19f: | | |
| Between prim. and sec. output | 1240 Vac | 60 s |
| Between prim. and core | 1240 Vac | 60 s |

11.0 Manufacturing and Production Tests

11.2 Grounding Continuity Test

Method

Each product listed below shall be subjected to a test to determine that there is continuity between accessible dead-metal parts of the product and the grounding pin or blade of the attachment plug.

If all accessible dead metal is connected, only a single test need be performed. A visual or audible device (ohmmeter, buzzer, etc.) may be used to indicate grounding continuity.

Products Requiring Grounding Continuity Test:

All products covered by this Report.

11.3 Pressure Tests for Leakage and Strength

Method

Each ice cream maker shall be tested and proved tight at not less than the design pressure(s) on the appliance.

If the final assembly is completed with flare-type fittings or telescoped tubing joints which are sealed with sliver solder, brazing, or the equivalent, the pressure test of the complete system may be at the low-side design pressure provided that the high-side parts are individually tested either by the room air conditioner manufacturer or by the manufacturer of the part at not less than the high-side design pressure.

At least once each year, a strength test shall be conducted on refrigerant-containing components of the shell-type which have an inside diameter greater than 3 inches(76.2mm) including motor-compressor enclosures. The test shall be conducted on at least one sample of each size and type. The part shall comply with requirements of Strength Tests. Such tests may be conducted either by the room air conditioner manufacturer or by the manufacturer of the component.

Products Requiring Pressure Tests for Leakage and Strength:

All products covered by this Report.

12.0 Revision Summary

The following changes are in compliance with the declaration of Section 8.1:

| Date/ Proj # Site ID | Project Handler/ Reviewer | Section | Item | Description of Change |
|---------------------------------|---|----------|----------------|---|
| 17-Jul-2017 170703104GZU | Becky Fan / Ivan Hu | 4 | 12 | Changed the Manufacturer of Valve for water from "Jiangmen Yinhao Electrical Appliances Co., Ltd" to "Zhongshan Donlim Weili Electrical Appliances Co., Ltd". |
| | | | 19d | Corrected the technical data of fuse from "125V" to "125/250V". |
| | | 7 | 6.1 | Added marking for ML "Nostalgia Products, LLC". |
| | | 9 | 1 | Added ML "Nostalgia Products, LLC", ML model series "ICMCC33, ICMCC26" with brand name "Nostalgia Products, LLC". |
| ##### 180502075GZU | Becky Fan / Candy Wei | 1 | - | Updated the UL standard from "UL 563 Issued: 2009/07/31 Ed: 8 Rev: 2013/11/29 Ice Makers" to "Ice Makers [UL 563:2009 Ed.8+R:12Jan2017]". |
| | | 7 | 6.1 | Revised the note to add the marking of new ML models. |
| | | 8 | - | Added test block for this revision and resigned. |
| | | 9 | 1 | Added ML model "ICEC33, ICEC33SB may be followed by one to ten characters" for ML "Nostalgia Products, LLC" with brand name "Nostalgia Products, LLC". |
| 12-Jul-2019 190708064GZU | Cplaying Chen / Candy Wei | 9 | 2 | Added ML "Curtis International LTD" and ML model "EFIC229" with brand name "FRIGIDAIRE". |
| 24-Jul-2019 190711121GZU | Becky Fan / Candy Wei | 3 | 13~15 | Added photos for alternative pump FS60202M. |
| | | 4 | 13 | Added alternative pump FS60202M from Zhongshan Donlim Weili Electrical Appliances Co., Ltd. |
| | | | 19a | Added alternative relay type GN-1A-12L. |
| | | | 19b | Added alternative relay type GI-1A-12D. |
| | | | 19f | Revised the technical data from "N1/N3=80T(1.2±10% mH)" to "Input: AC100-120 V; Output: DC12 V, 0.8 A.". |
| | | | 19g | Added alternative Optical Isolator type LTV-817. |
| 6-Aug-2021 210720082GZU | Lock Li, Kelvin Guan / Sunny Zhou | 1 | -- | Updated the UL standard from "Ice Makers [UL 563:2009 Ed.8+R:12Jan2017]" to "Ice Makers [UL 563:2009 Ed.8+R:30Aug2018]". |
| | | | -- | Corrected the CSA standard from "CSA C22.2#120 Issued: 2013/03/01 Ed: 4 Refrigeration Equipment" to "Refrigeration Equipment (R2018)>Partial superseding< [CSA C22.2#120:2013 Ed.4]". |
| | | 3 | 16, 17 | Added these new photos. |
| | | 4 | 19f | Added " Class A. Consists of items 19f-1 to 19f-6. Refer to illustration No.7.1 for detail." to the tehcnical data. |
| | | | 19f-1 to 19f-6 | Added these new items. |
| | | 6 | 8 | Modified the content from "manufacturer's name, trademark, or trade name" to "Applicant's name or brand names". |
| | | | 12 | Added a new item "Transformer". |
| | | 7 | 2 | Replaced this illustration with new illustration. |
| | | | 6.1 | Deleted the ETL Mark, Control Number and Standards from the ETL label. |
| | | | 7.1 | Added a new illustration. |
| | | 8.0, 8.1 | -- | New test block added, Re-signed. |
| | | 11 | 11.1 | Added the test item for transformer.. |

12.0 Revision Summary

The following changes are in compliance with the declaration of Section 8.1:

| Date/ Proj # Site ID | Project Handler/ Reviewer | Section | Item | Description of Change |
|-------------------------|---------------------------------------|---------|------|--|
| 19-Oct-2022 | Ebel Chen | 9.0 | 2 | Deleted ML2 Curtis International LTD. Model No.EFIC229, with brand name FRIGIDAIRE. |
| 202210007SVN | Win Qiu | | | |
| 22-Mar-2023 | Romeo Luo/ Lock Li | 1 | -- | Updated UL standard from "Ice Makers [UL 563:2009 Ed.8+R:30Aug2018]" to "Ice Makers [UL 563:2009 Ed.8+R:26May2021]". |
| 230213013GZU | | 6 | 11 | Deleted this item: ETL Listing Marking - The control no. is 3098825. |
| | | 8 | -- | Added new test block and re-signed. |
| 29-Aug-2023 | Steve Yuan, Romeo Luo / Lock Li | 1 | - | Corrected the CSA standard from "Refrigeration Equipment (R2018)>Partial superseding< [CSA C22.2#120:2013 Ed.4]" to "Refrigeration Equipment (R2018) [CSA C22.2#120:2013 Ed.4]". |
| 230719169GZU | | 4 | 16 | Added alternative condenser fan model DC12025SEMB. |
| | | | 19a | Revised technical data for Relay model GN-1A-12L from "16A, 250VAC" to "16A, 277VAC". |
| | | 5 | 16 | Added this item. |
| | | 8 | - | Added new test block and re-signed. |
| 19-Sep-2023 | Steve Yuan, Romeo Luo / Lock Li | 2 | - | 1.Added new brand name "Professional Series". 2.Added new model "PS-IM339-I6A", revised Model Similarity. |
| 230919138GZU | | | | |
| 6-Jan-2024 | Steve Yuan/ Lock Li | 1 | -- | 1. Revised Applicant and Manufacturer from "Zhongshan Donlim Weili Electrical Appliances Co., Ltd" to "Guangdong Welly Electrical Appliances Co., Ltd". 2. Reivsed Applicant and Manufacturer address form "Fusha Industrial Park, Fusha Town, Zhongshan City, Guangdong" to "Fusha Industrial Park, Fusha Town, ZHONGSHAN CITY, Guangdong Province". |
| 231026162GZU | Steve Yuan Lock Li | 2 | -- | 1. Added new Brand names "WEILI, AGLUCKY, Kndko, Kismile, COWSAR". 2. Added new models "Z3915-BLACK, Z3915-SILVER, Z3915-BLACK-KSZ, Z3915-SILVER-KSZ", reivsed Model Similarity due to new models. 3. Revised High Pressure from "200PSIG" to "220PSIG". 4. Revised Low Pressure from "88PSIG" to "130PSIG". |
| | | 3 | 4a | Added this photo. |
| | | | 6 | Revised photo number from "4" to "4, 4a". |
| | | | 10 | Added alternative Motor Compressor model "QD48Y11G". |
| | | | 12 | Reivsed manufacturer of valve for water model FCD90A from "Zhongshan Donlim Weili Electrical Appliances Co., Ltd" to "Guangdong Welly Electrical Appliances Co., Ltd". |

12.0 Revision Summary

The following changes are in compliance with the declaration of Section 8.1:

| Date/ Proj # Site ID | Project Handler/ Reviewer | Section | Item | Description of Change |
|-------------------------|------------------------------|---------|------|---|
| | | 4 | 13 | Revised manufacturer of Water pump model FS60202M from "Zhongshan Donlim Weili Electrical Appliances Co., Ltd" to "Guangdong Welly Electrical Appliances Co., Ltd". |
| | | | 16 | Revised manufacturer of Condenser Fan model DC12025SEMB from "Zhongshan Donlim Weili Electrical Appliances Co., Ltd" to "Guangdong Welly Electrical Appliances Co., Ltd". |
| | | | 19 | Revised manufacturer of Switching power supply model ICM1588-E-** from "Zhongshan Donlim Weili Electrical Appliances Co., Ltd" to "Guangdong Welly Electrical Appliances Co., Ltd". |
| | | | 19b | Added "85°C" into technical data for all models. |
| | | | 19f | Added alternative transformer model EE20 with manufacturer "Guangdong Welly Electrical Appliances Co., Ltd". |
| | | 7 | 6.1 | Replaced this illustration. |
| | | 8 | -- | Added new test block and re-signed. |