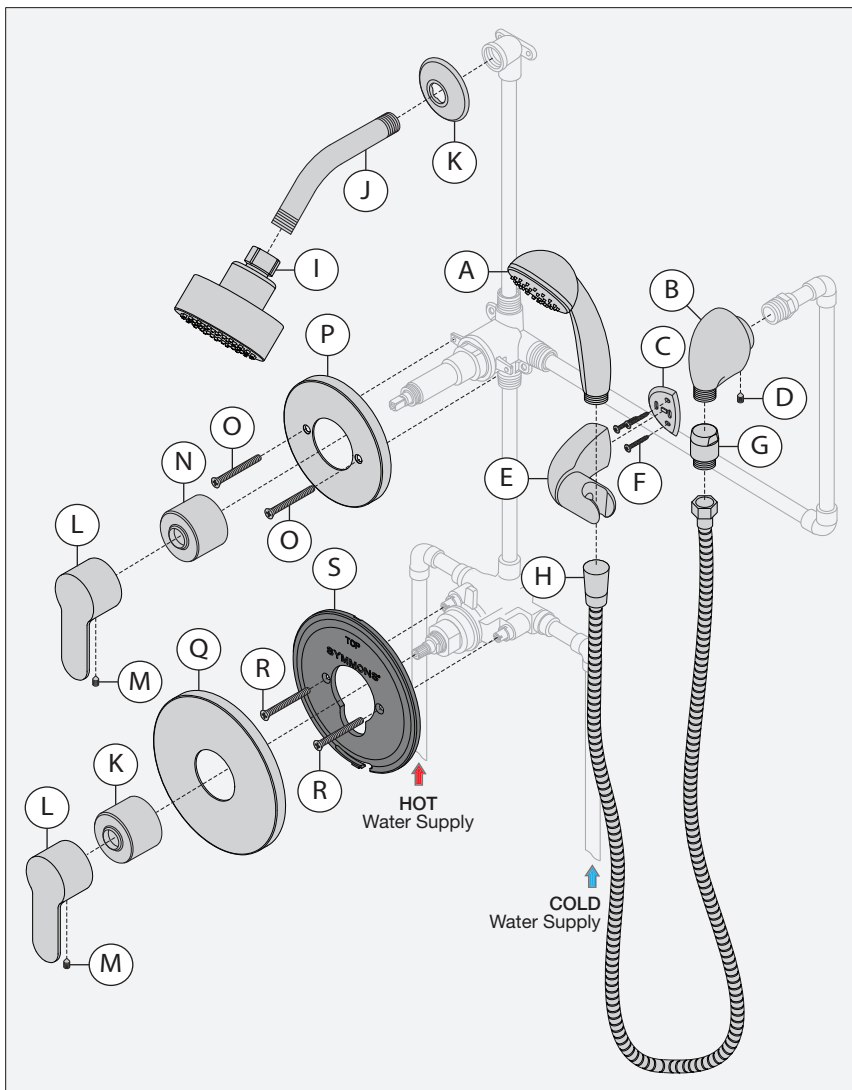


Parts Breakdown



Notes:



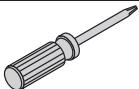

- 1) Apply a bead of silicone around the perimeter of all shower trim installed flush to the finished wall (less mounting plates and brackets). Leave opening on bottom of escutcheons for weep hole.
- 2) Apply plumber tape to all threaded connections.

Replacement Parts

Item	Description	Part Number
A	Hand Shower	EF-100*
B D	Wall Ell Set Screw	EF-105*
C E F	Mounting Plate Wall Cradle Screws	EF-106*
G H	Vacuum Breaker 60" Hose	EF-104*
I	Showerhead	672SH*
J K	Shower Arm Flange	300S*
L M	Handle Set Screw	RTS-084*
N	Dome Cover	T-19*
O P	Diverter Escutcheon Kit	67-DIV*
Q R S	Shower Escutcheon Kit	6700-ESC*

***Note:** Append -STN to part number for Satin Nickel finish.

Tools Required for Installation

Adjustable Wrench	
Allen Wrench 3/32"	
Phillips Head Screwdriver	
Plumber Tape	
Silicone	