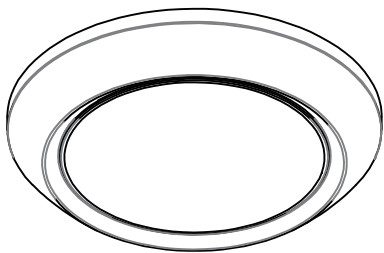


# 说明书尺寸200x255mm

## 材质：70g胶纸

### **sunlite®** INSTALLATION INSTRUCTIONS



**Please read and understand this entire manual before attempting to assemble, operate or install the product.**

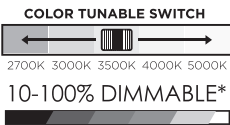
**WARNING:** Risk of fire or electric shock. Turn power off before inspection, installation, or removal. Use only on 120 volt circuits. Before installation, thoroughly review enclosed installation manual. This product must be installed in accordance with the applicable installation code by a person familiar with the construction and operation of the product and the hazards involved. If you do not have sufficient electrical wiring experience, please consult a qualified electrician. Non-IC Rated. Not to be used for emergency lighting. Operating temperature -20°C – 40°C (-4°F – 104°F). Suitable for wet locations.

Do not make or alter any open holes in an enclosure of wiring or electrical components during kit installation. To prevent wiring damage or abrasion, do not expose wiring to edges of sheet metal or other sharp objects. THIS FIXTURE BODY IS ONE PIECE, DO NOT DISASSEMBLE OR MAKE ALTERATIONS.

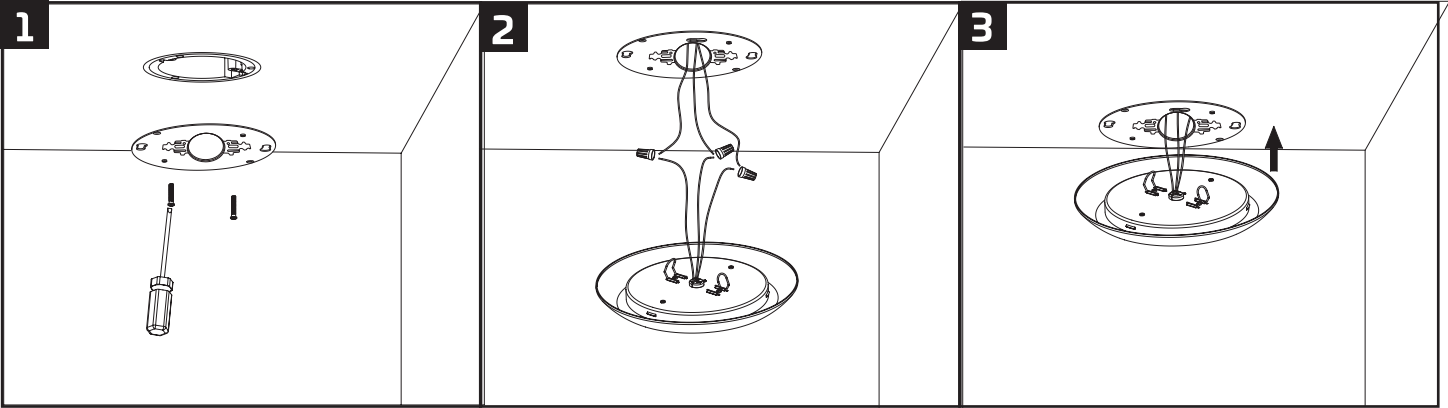
This device complies with part 15 of the FCC Rules. Operation is subject to the following two conditions: (1) this device may not cause harmful inference, and (2) this device must accept any inference received, including that may cause undesired operation.

\*The lamp may not be compatible with all dimmers. Go to [www.Sunlite.com/Dimmers](http://www.Sunlite.com/Dimmers) to find dimmer compatibility information.

Retain these instructions for future maintenance reference.



### Mounting Installation



### Retrofit Installation (Only for 5/6inch Can)

