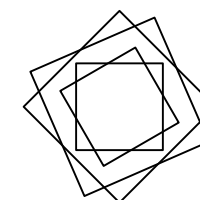
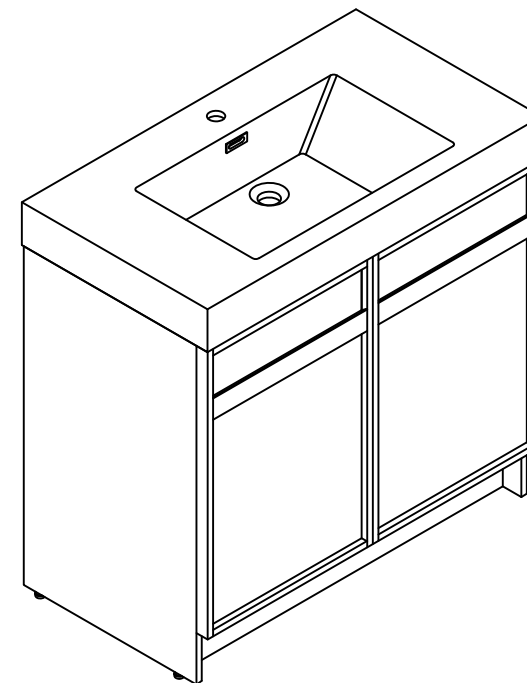


# Installation Manual-BV C11130 BV C11136

MOTIVATE  
YOUR LIFE !

## THANKS FOR WATCHING

Your feedback is invaluable to us and we would love to hear about your experience. Please take the time to leave us a review.



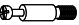












## Thank you for shopping with us!

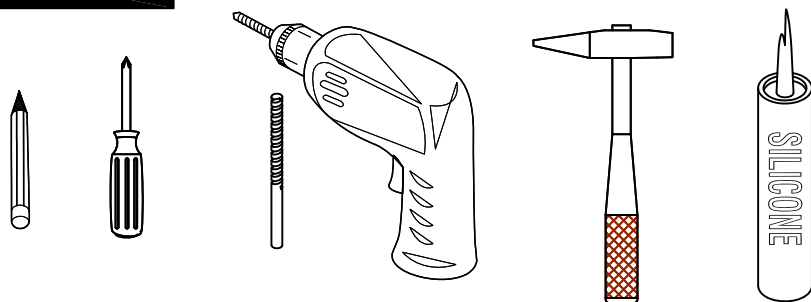
We encourage you to take a few minutes to go through this booklet. It contains important information on installation and care tips to keep your furniture looking as good as new.

# Item NO.:BV C11130 / BV C11136

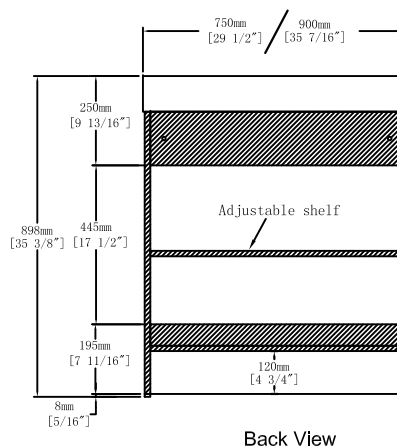
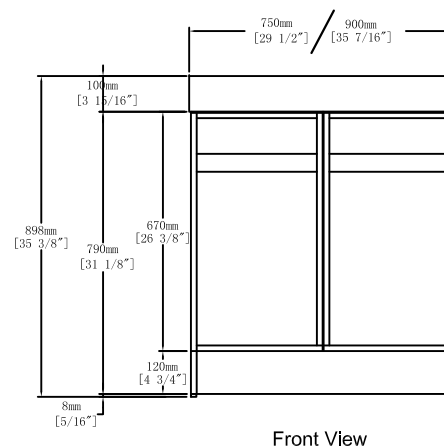
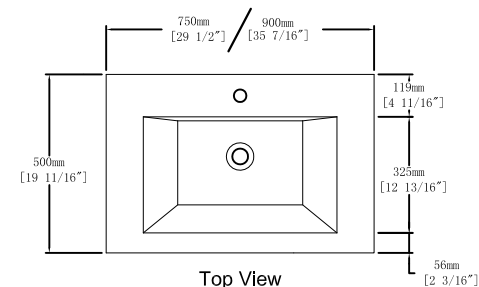
## Hardware

NO.	Draw	QTY	NO.	Draw	QTY
A	 Screws Ø4x14mm	44	I	 Hinges ( Full cover )	4
B	 Two-in-one connector	24	J	 Adjustable feet	4
C	 Two-in-one connector	24	K	 Movable laminate support	4
D	 Wood plug	4	L	 Anti-collision gasket	4
E	 Plastic anchor(Ø10mm)	2	M	 Screwdriver	1
F	 Screws for fix on the wall	2			
G	 Bracket (53x70x44mm)	2			
H	 Bracket (19x19x35mm)	2			

## Recommended tools



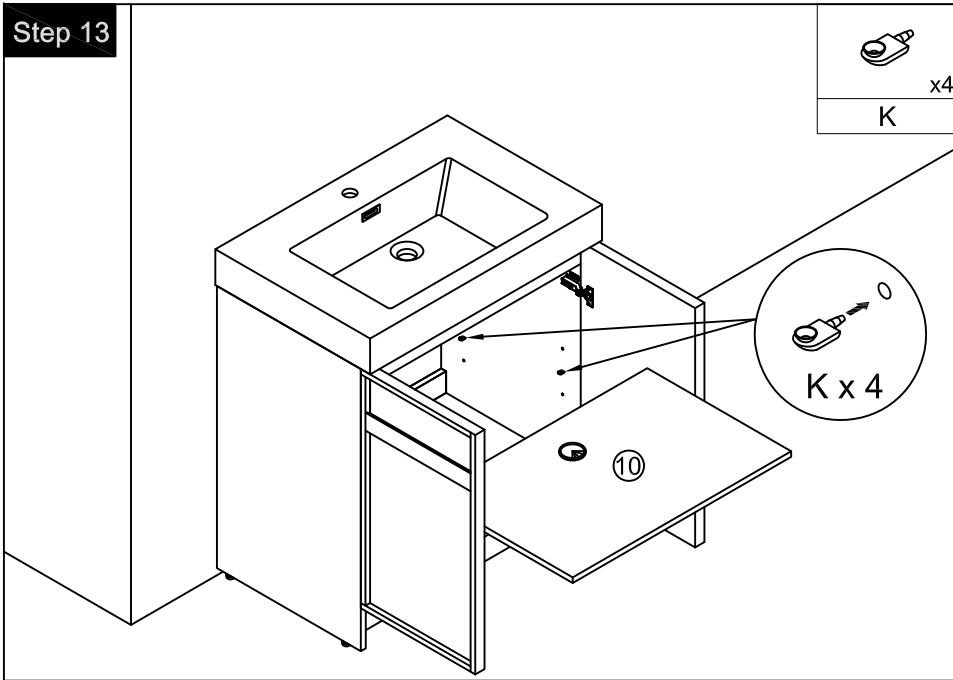
## Dimensions



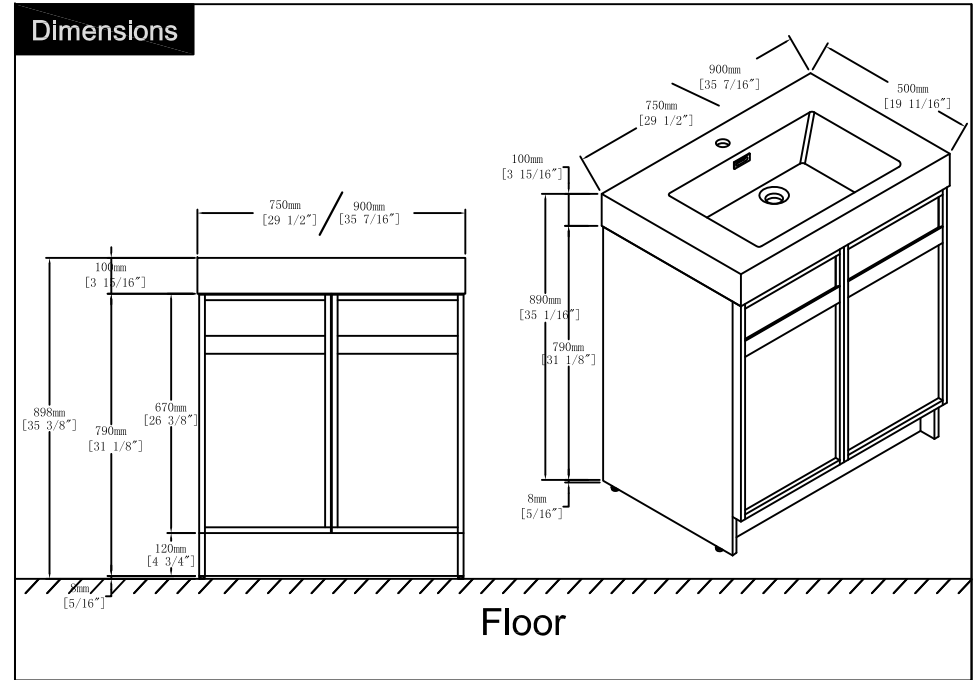
## CARE CLEANING AND MAINTENANCE

- 1.Dust regularly with a soft , dry cloth.
- 2.Avoid the use of all chemicals household cleaners, abrasives, or cleaners that contain lemon, vinegar, or other acids that may damage the finish.
- 3.Excessive exposure to sunlight and extreme changes in temperature and moisture can damage wood furniture.
4. The sink is fragile, please pay attention to maintaining its appearance.
- 5.Do not place hot appliances, such as curling irons and hot hair dryers directly on the countertop. Wipe spills immediately.

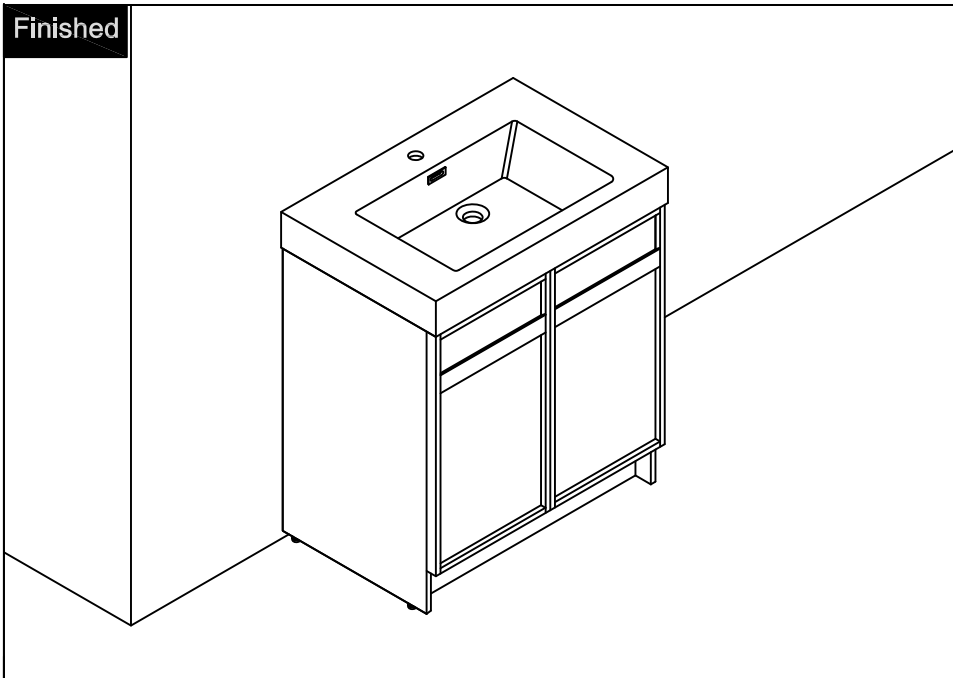
## Step 13



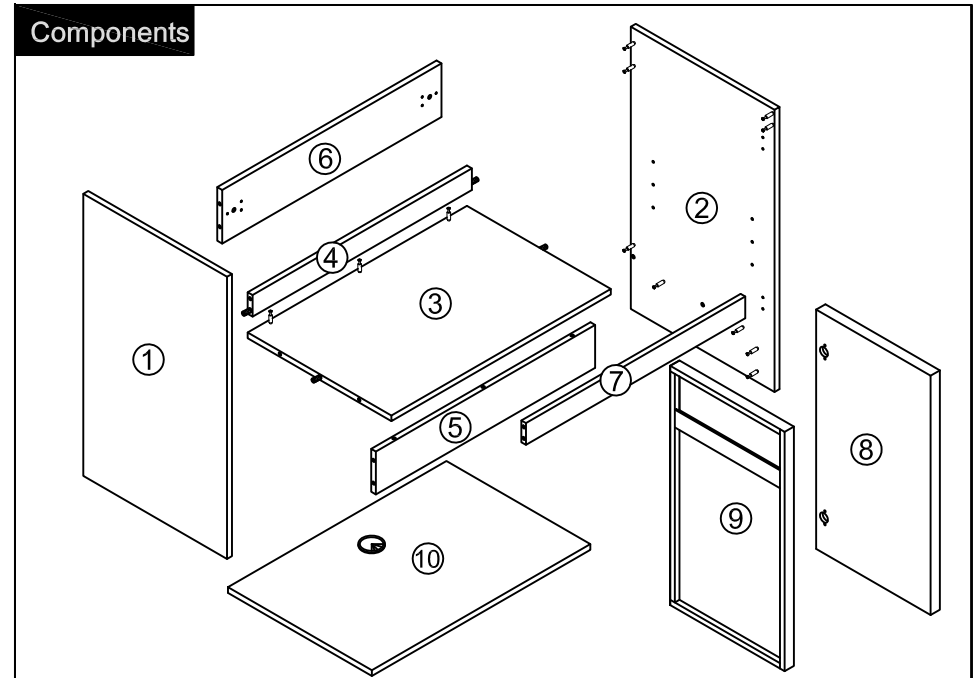
## Dimensions



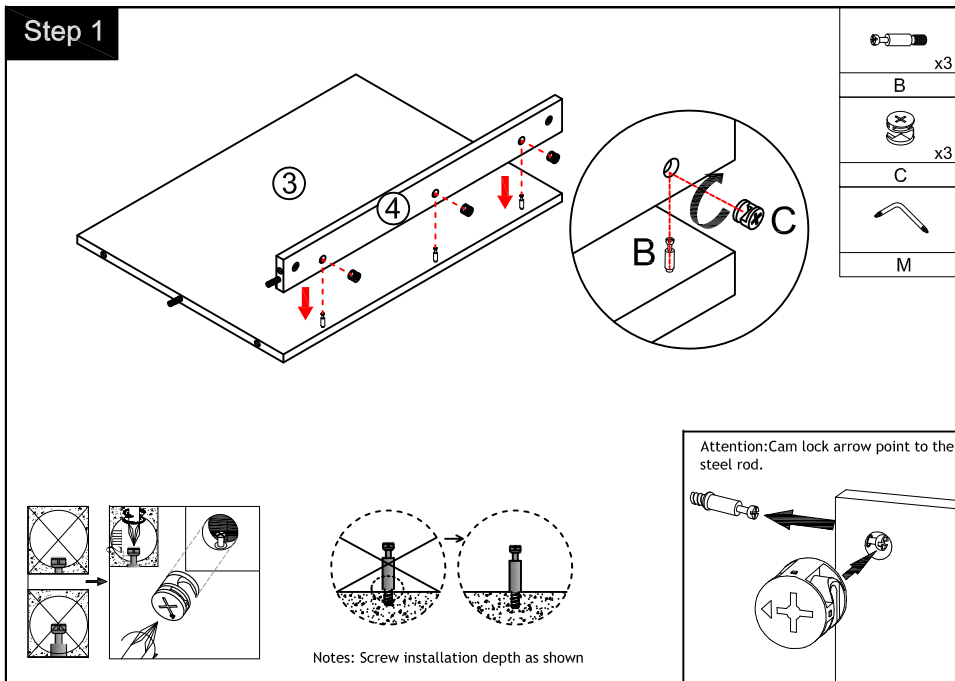
## Finished



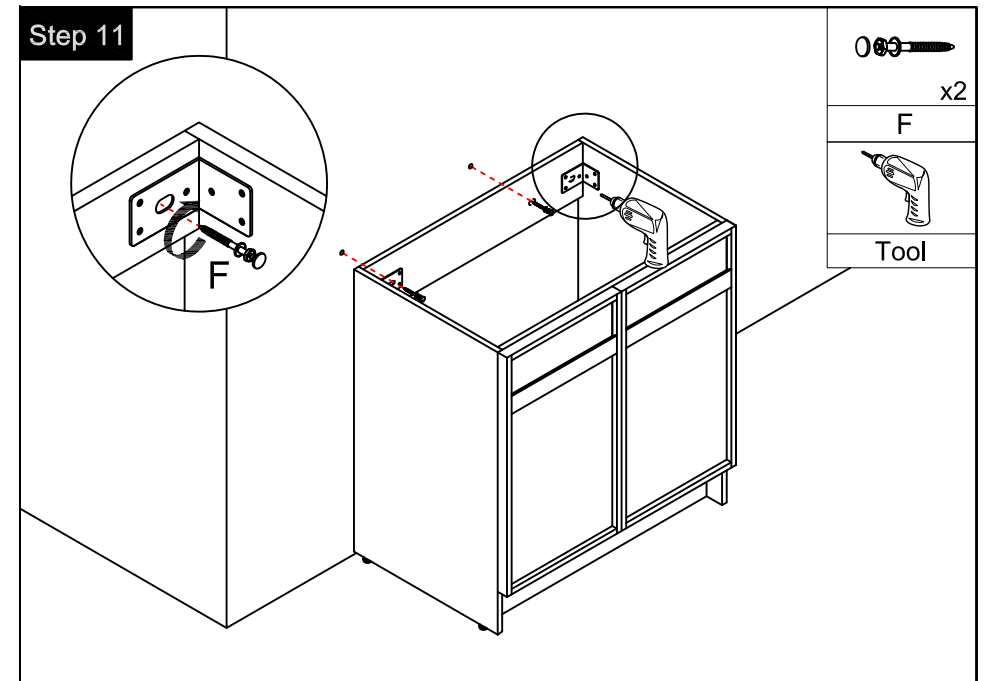
## Components



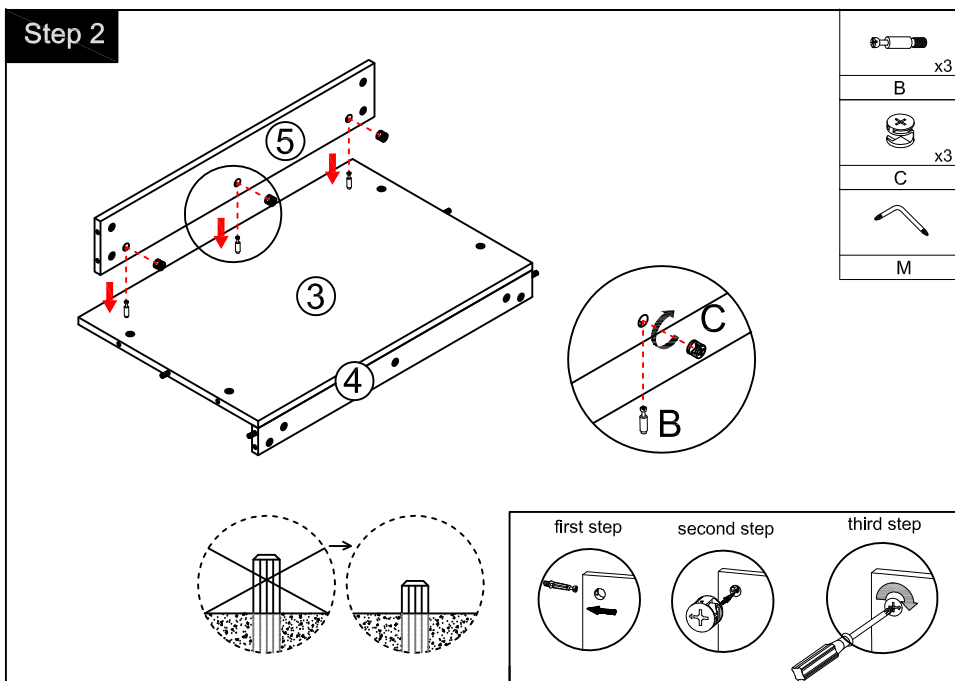
## Step 1



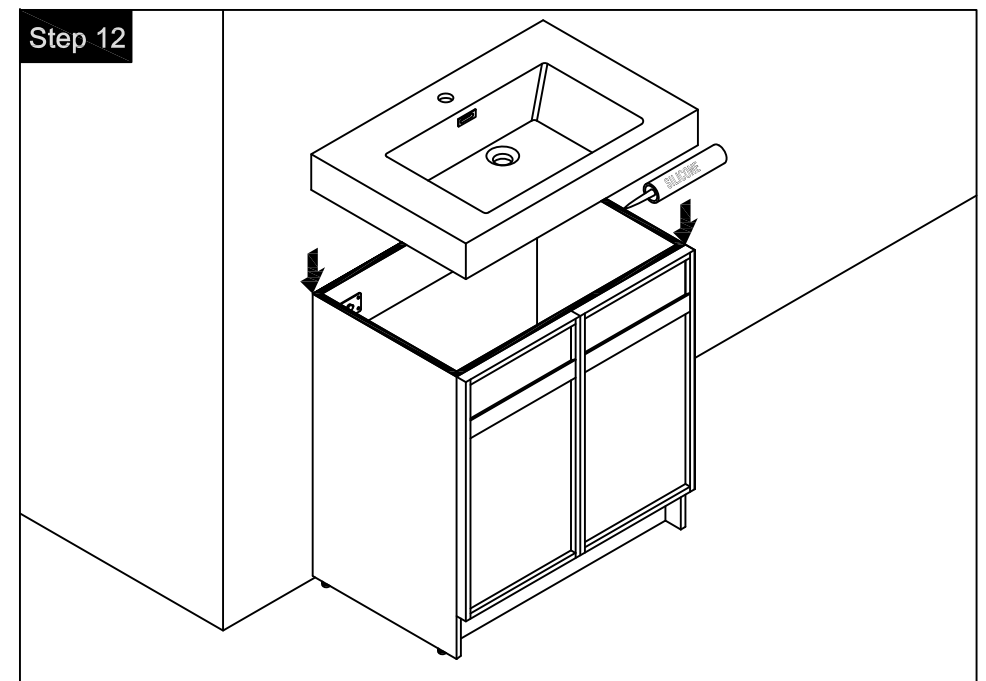
## Step 11



## Step 2



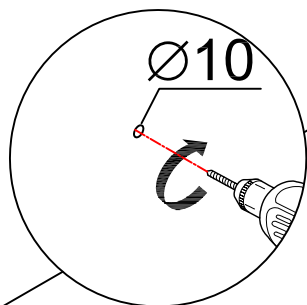
## Step 12



## Step 9



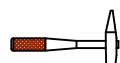
Tool



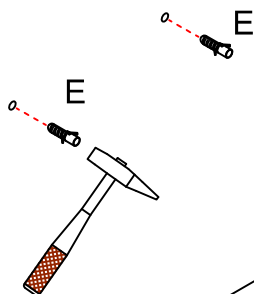
## Step 10

 $x_2$ 

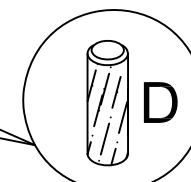
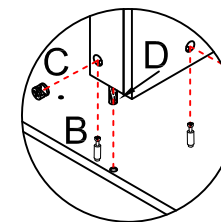
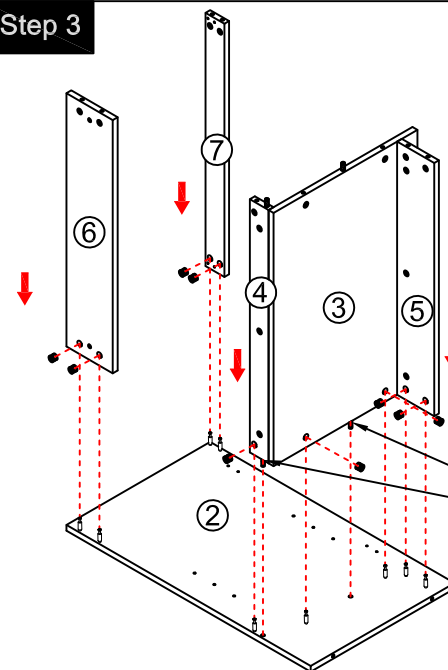
---

E

Tool



### Step 3



Note: The D parts are used for these two holes



x9

on



x9

9

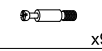
 $\gamma^2$ 

□



---

**A**



x9

Р



x9

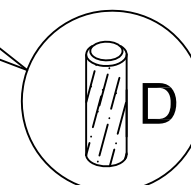
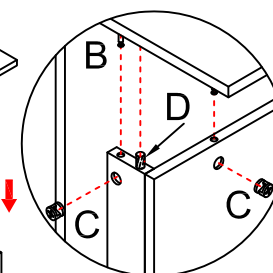
9

 $\gamma^4$ 

□

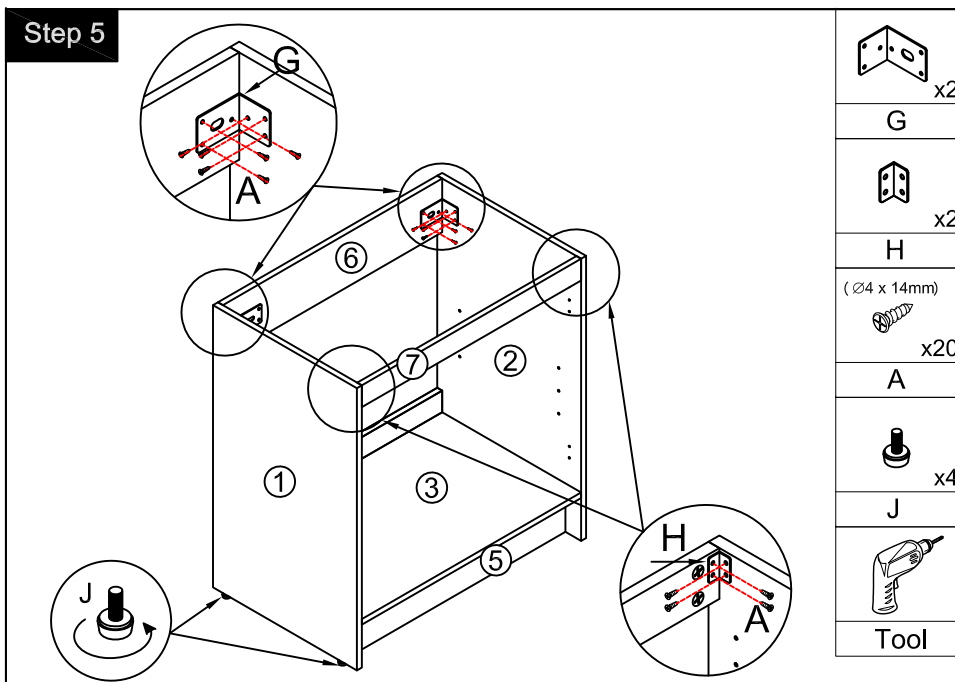


N

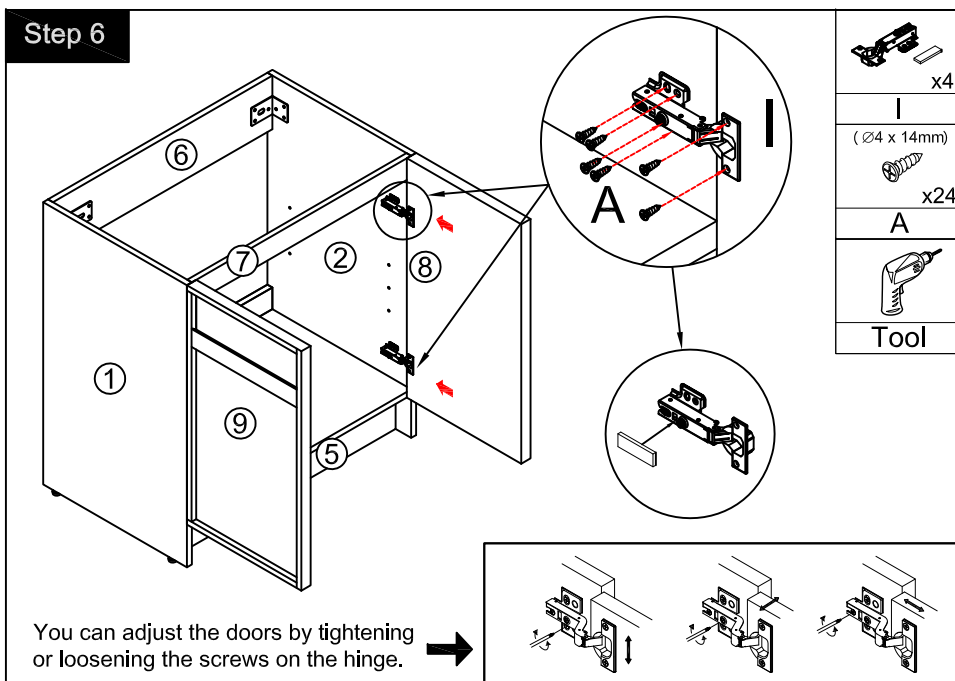


Note: The D parts are used for these two holes

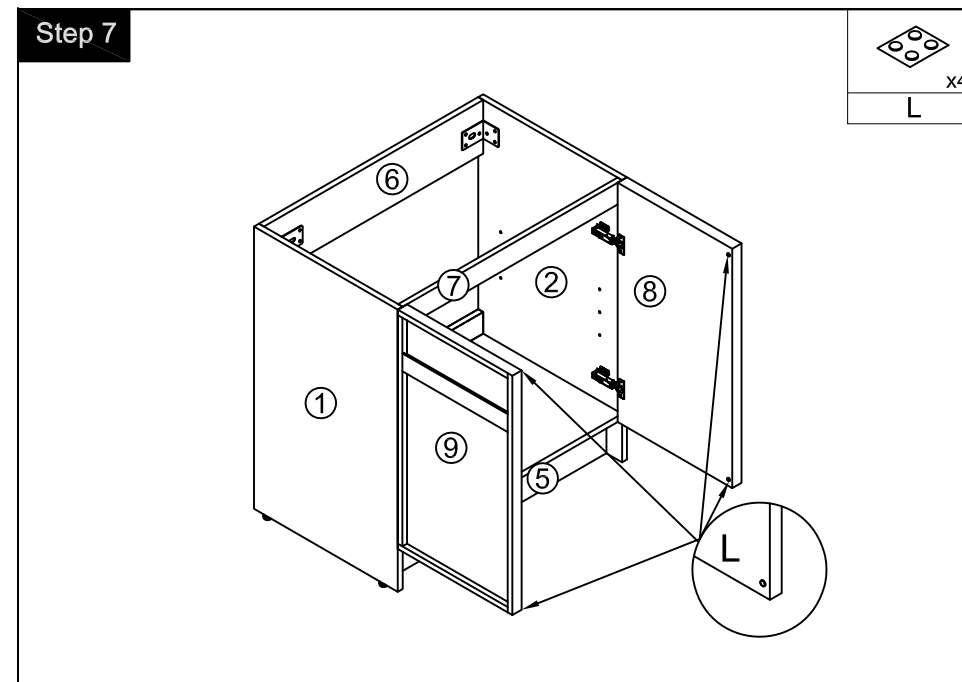
## Step 5



## Step 6



## Step 7



## Step 8

