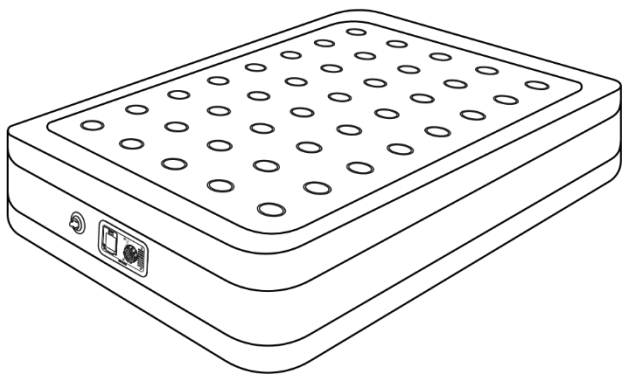


Thank you for your purchase!

Air Mattress

User Manual



Online Assembly Instructions: <http://ftp.flashfurniture.com/AssemblyInstructions/WG-AM101-18-T-GG.pdf>

Customer Service email: CustomerExperience@belnickinc.com | Phone: 866-552-2810

WG-AM101-18-T-GG / WG-AM101-18-Q-GG

Safety Information

IMPORTANT: Please read and comply with all instructions and warnings provided in this manual before using the product. Failure to comply with the instructions and warnings provided herein may result in inaccurate results and/or damage to the product itself.

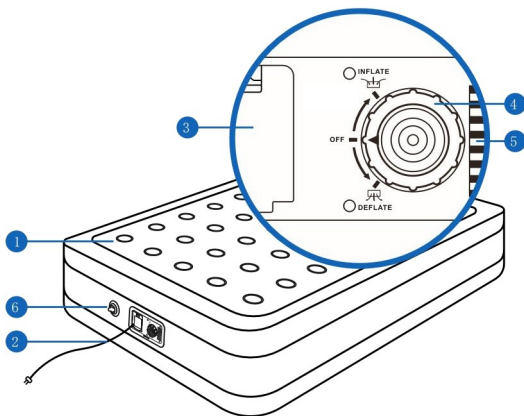
WARNING: To reduce the risk of burns, fire, electric shock or injury:

- Always unplug the air mattress when not in use.
- Close supervision is necessary when this furnishing is used by or near children, or people with limited mobility.
- This air mattress is only to be used for its intended purpose as described in this manual.
- DO NOT operate this device if it has a damaged cord or plug, if it is not working properly, if it has been dropped or damaged or if it is wet.
- Keep the power cord away from heated surfaces.
- DO NOT block the air openings while the device is in operation.
- Always keep air openings free of lint, hair and other small objects. Never drop or insert objects into any of the openings.
- DO NOT operate this device where aerosol (spray) products are being used or where oxygen is being administered.
- DO NOT use or place any video equipment such as televisions or computer monitors on the air mattress.
- DO NOT use the air mattress near people using or wearing medical devices.
- Keep away from sharp objects that may damage product. Do not operate in proximity to any sharp tools or gadgets.
- Never place infant, aged birth to 15 months, to sleep on this inflatable air mattress. Infants can suffocate on an under-inflated or deflated mattress, on bedding, by co-sleeping with another person and by entrapment between the mattress and bed frame or between the mattress and a vertical surface.
- Provide at least a shoulder width space between the inflatable mattress and adjacent vertical surfaces such as walls, dressers, or other objects. Always keep the mattress fully inflated when in use.
- **CAUTION:** This device is operated with an electrical air pump that is thermally protected. The pump does not contain parts that can be repaired or serviced. Opening the pump casing may expose you to the risk of electric shock. If you have any issues with the electrical pump upon arrival, please contact our customer service team immediately.

- DO NOT open the air pump casing for any reason.
- DO NOT use on surfaces where heat may cause a problem.
- A fire may occur if this device touches or is covered by flammable materials including curtains, draperies, cardboard, plastics etc., while in operation.
- DO NOT operate the pump in enclosed spaces that are not well-ventilated. Always ensure there is at least 2 ft. of clearance from any wall or object while the pump is in operation.
- DO NOT operate the pump in the presence of explosive and/or flammable fumes.
- DO NOT place any part of the pump or cord in or under water or other liquid.
- DO NOT exceed the weight limit for this device 650 lbs. (Queen) and 550 lbs. (Twin).

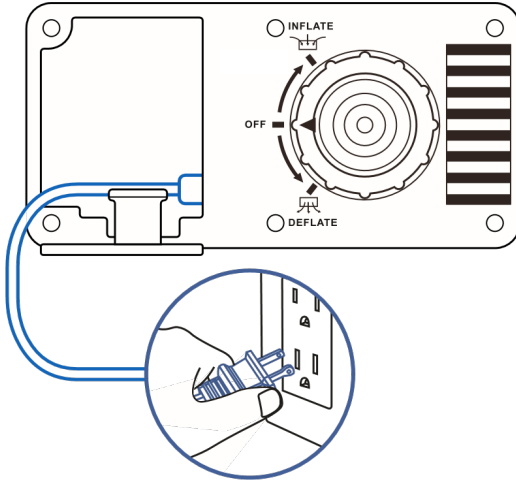
Main Functions

1. Air Mattress (Textured Side Facing Up)
2. Power Cord
3. Power Cord Compartment
4. Control Dial
5. Air Inlet
6. Manual Inflation/Deflation Valve



Set-Up

1. Remove the air mattress from its packaging and unfold it so that the textured side is facing up.
2. Open the the power cord compartment and connect the power cord to an electrical outlet.

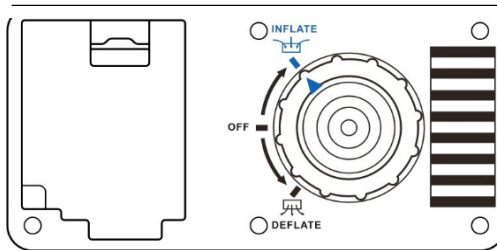


US

Operation

Inflate

1. Turn the control dial clockwise to inflate the air mattress. Make sure the arrow on the control dial is aligned with "INFLATE".
2. Turn the control dial back to "Off" when the mattress has reached the desired firmness level. Make sure the arrow on the control dial is aligned with "OFF".
3. Lie on the air mattress to test the firmness.
4. Adjust the firmness by either continuing to inflate the air mattress or turn the control dial to "DEFLATE" to let some air out.
5. Unplug the power cord and store it in the power cord compartment.



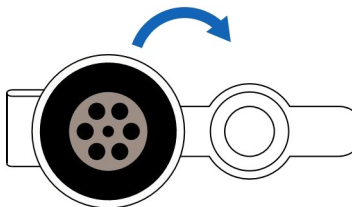
Deflate/Storage

1. Plug in the power cord and turn the control dial counter-clockwise to deflate the air mattress. Make sure the arrow on the control dial is aligned with "DEFLATE".
2. After the air mattress is completely deflated, unplug the power cord and place it back into the storage compartment.
3. Lay mattress with the textured side up and fold the mattress into thirds, then roll up the mattress to release any remaining air.

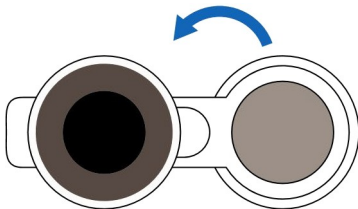
Note: Make sure the mattress is clean and dry. Store the mattress in a cool, dry place. Wipe with a damp cloth to remove dirt or spills.

Manual Inflation/Deflation

1. Open the cover of the manual valve (as seen in the diagram). Connect an air pump or hose to the mattress. Inflate the mattress to the desired firmness level and disconnect the air pump.



2. **To deflate** the mattress, fully open the cover manual inflation/deflation valve to release all of the air from the mattress.
3. **Close** the cover.



Specifications

Model No.	Queen	Twin
Dimensions	80 x 60 x 18 in 203 x 152 x 46 cm	78 x 40 x 18 in 198 x 102 x 46 cm
Max. Weight Capacity	650 lbs. (295 kg)	550 lbs. (249 kg)
Current	1.5 A	1.5A
Voltage (US)	110-120V	110-120V

Package Contents

- 1 x Air Mattress
- 1 x User Manual
- 1 x Storage bag
- 1 x Flocked repair patch
- 1 x PVC repair patch
- 1 x Self-adhesive patch

Warranty Information

Flash Furniture 5 Year Limited Product Warranty:

What Does This Warranty Cover?

This warranty covers manufacturing defects associated with your new product. The product is warranted from the original purchase date and to the original purchaser for normal usage, according to the below-referenced specifications and limitations.

- Non-moving metal parts are warranted for 5 years.
- Component parts including pneumatic cylinder, control mechanism, base and casters are warranted for 2 years.
- All other items are warranted for 1 year.

Normal usage means use in compliance with the restrictions and weight limits specified for the product. In the absence of product-specific restrictions and weight limits, normal usage means use for no more than forty hours per week by persons weighing 250 lbs. or less. Coverage terminates if the product is sold or otherwise transferred. Repairs made by parties other than Belnick also void this warranty.

What Does This Warranty Not Cover?

This warranty will not cover: (1) labor, freight, or damage from misuse, abuse, negligence, alteration, assembly, installation, attachments, accident, vandalism, acts of nature or any other event beyond the control of Belnick; (2) tearing, scratching, scuffing, or blemishing of leather or fabric; (3) cosmetic damage that may result from normal usage; (4) damage attributable to use by persons exceeding specified weight limits or commercial use exceeding forty hours per week; or (5) rust or other damage caused by exposure to moisture. The user assumes all risk of injury resulting from use of this product. Liability for incidental or consequential damage is excluded. Some states do not allow the exclusion or limitation of incidental or consequential damages, so the above limitation or exclusion may not apply to you.

What Will This Warranty Do?

Flash Furniture will repair or replace any covered defective or malfunctioning part at no charge.