

GREYFIELD

SINGLE-HOLE PULL-DOWN KITCHEN FAUCET

SKU: 948401



FEATURES

- Installation Type: Single-Hole
- Material: Brass
- Handle Type: Lever
- Design: Modern
- Swivel Spout: Yes
- Ceramic Disc Cartridges: Yes
- Non-Kink Nylon Hose
- Optional Deck Plate Included
- 3-Function Sprayer:
 - Stream, Full Spray, and Pause

CONTENTS

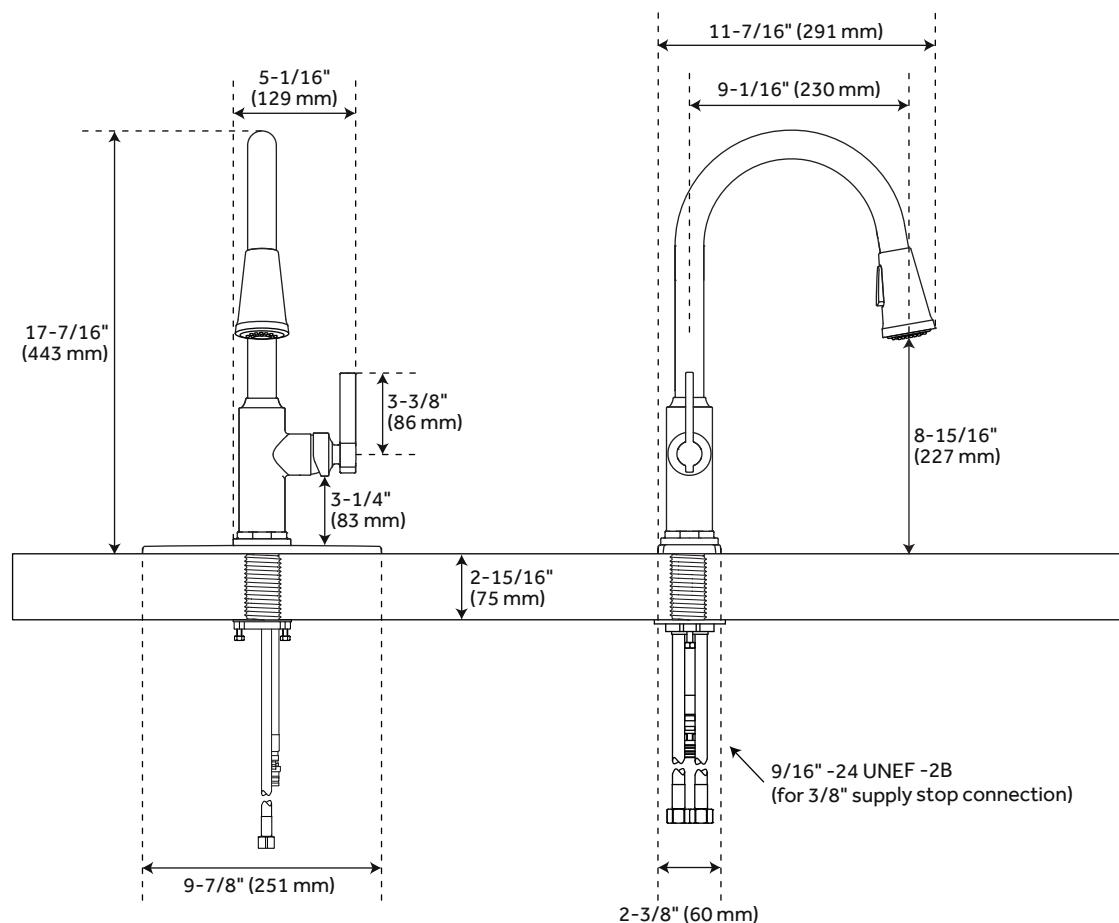
FAUCET PAGE 2

REVISED 03/31/2021

GREYFIELD

SINGLE-HOLE PULL-DOWN KITCHEN FAUCET

SKU: 948401



FEATURES

Length: 6-1/4"
Length: 9-7/8"
Width: 11-7/16"
Height: 17-7/16"
Height to Spout: 8-15/16"
Spout Reach: 9-1/16"
Base Plate Length: 9-7/8"
Base Plate Width: 2-3/8"
Handle Length: 3-3/8"
Maximum Flow Rate:
1.8 gpm (6.8L/min) max @ 60 psi

CODES/STANDARDS

cUPC
ASME A112.18.1/CSA B125.1
NSF/ANSI 61
NSF/ANSI 372
ICC/ANSI A117.1 (when installed
according to ADA standards)
CEC Listed
CALGreen
Massachusetts Accepted



PRODUCT IMAGE



All dimensions and specifications are nominal and may vary. Use actual products for accuracy in critical situations.

PAGE 2
Code: SHXCGF101