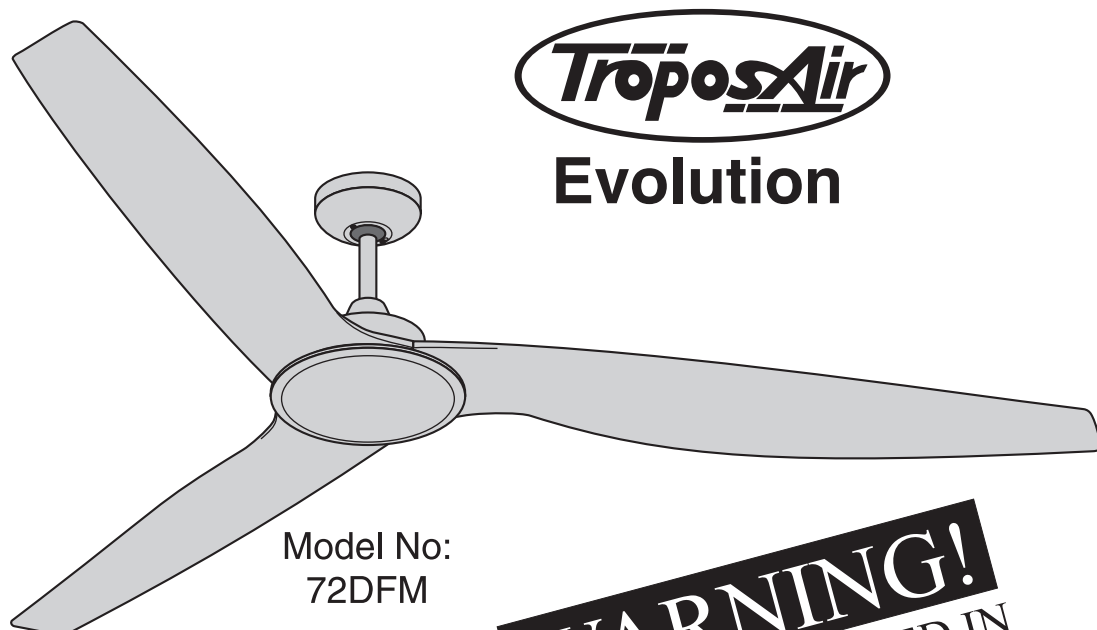
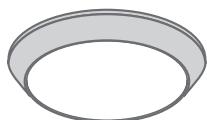


Owner's Manual



Evolution

Model No:
72DFM



#650 LED light
Sold Separately

WARNING!
FAN IS ASSEMBLED IN
A DIFFERENT ORDER
THAN OTHER FANS.
**BLADES
GO ON FIRST
READ THESE
INSTRUCTIONS**

These instructions contain 5 pages:

Page 1: Foreword

Page 2: Unpack and inspect parts contained, and pre-installation notes

Page 3: Hanging Bracket and Blade installation, Optional Light Pre-Assembly

Page 4: Hanging system installation

Page 5: Wiring and Canopy Installation, Cover and Remote setting

Net Weight

4.6 KGS

10.1 LBS

Toll Free 1-855-676-7247

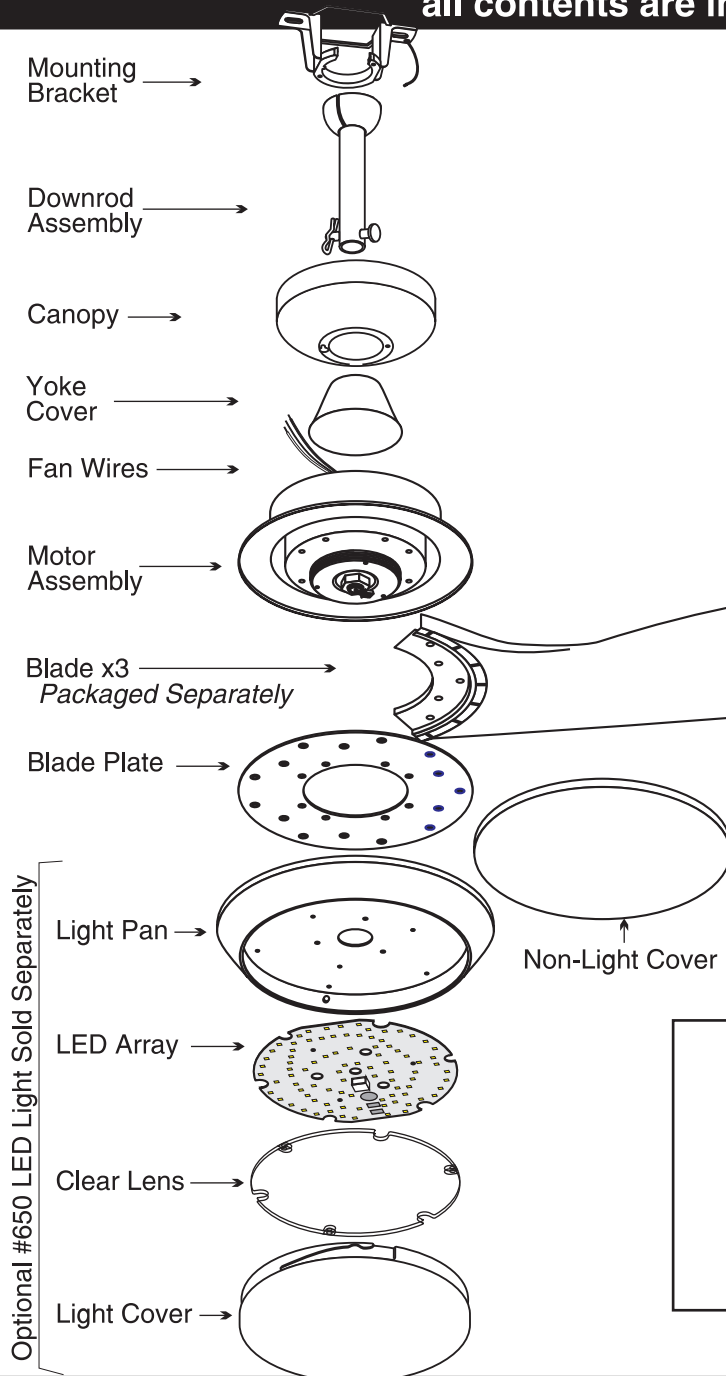
WARNING: Read and follow these instructions carefully and be mindful of all warnings shown throughout.

READ AND SAVE THESE INSTRUCTIONS

WARNING : TO REDUCE THE RISK OF FIRE, ELECTRICAL SHOCK, OR INJURY TO PERSONS, PLEASE OBSERVE THE FOLLOWING:

- 1.] To ensure success of installation, be sure read these instructions and review the diagrams thoroughly before beginning.
- 2.] **To avoid possible electric shock, be sure electricity is turned off at the main power box before wiring.**
All electrical connections must be made in accordance with local codes, ordinances and/or the National Electrical Code. If you are unfamiliar with the methods of installing electrical wiring and products, secure the services of a qualified and licensed electrician as well as someone who can check the strength of the supportive ceiling members and make the proper installations and connections.
- 3.] Make sure that your installation site will not allow rotating fan blades to come into contact with any object. Blades should be at least 7 feet from the floor when fan is in operation.
- 4.] If possible, mount ceiling fan on a ceiling joist - the joist must be able to support the motion and weight of the moving fan. If the fan will be mounted on a ceiling outlet box, a 4" x 2 1/8" deep METAL octagon box is required; one UL listed as "suitable for fan support". The box and its supporting members must not be able to twist or work loose. **DO NOT USE PLASTIC BOXES.** Installation on a concrete ceiling should be performed by qualified personnel.
- 5.] Blades should be attached after motor housing is hung and in place. Fan motor housing should be kept in carton until ready to be installed to protect its finish. If you are installing more than one ceiling fan, make sure that you do not mix fan blade sets.
- 6.] After making electrical connections, spliced conductors should be turned upward and pushed carefully up into the outlet box. The wires should be spread apart with the grounded conductor and the equipment-grounding conductor on one side of the outlet box and the "HOT" wires on the other side.
- 7.] Electrical diagrams are for reference only. Light kits that are not packed with the fan must be UL/ETL listed and should be installed per the light kit's installation instructions.
- 8.] After fan is completely installed, check to make sure that all connections are secure to prevent fan from falling and/or causing damage or injury.
- 9.] The fan can be made to work immediately after installation. The bearings are adequately charged with grease, so that, under normal conditions, further lubrication should not be necessary.
- 10.] The fan turns off and stops before reversing fan direction.
- 11.] This fan is suitable for sloped ceiling.
- 12.] This fan is electrically reversible.
- 13.] This fan can be outfitted with an integrated light kit.
- 14.] This fan is controlled by remote control.
- 15.] This fan is suitable for indoor use or damp location use.

Unpack and inspect fan carefully to be certain all contents are included.



Hardware Bag

For Mounting Bracket:

Flat Washer x2
Star Washer x2
Spring Washer x2
Machine Screw x2
Wood Screw x2

For Wire Connection

Wire Nut x3

For Blade Installation

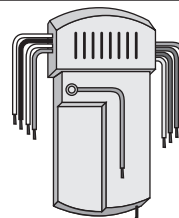
Blade Screw x15 +1
Blade Flat Washer x15 +1

For Blade Plate Installation

Plate Screw x8 +1

For Light Installation

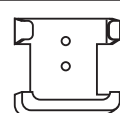
Light Screw x9 +1
3 for Pan, 3 for LED Array, 3 for Lens



Remote Receiver



Remote Transmitter



Remote Wall Bracket



Wall Bracket Screws x2

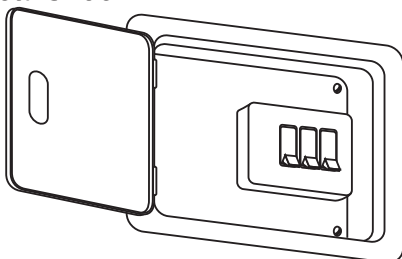


Wire Nuts x 8

WARNING: blades should be at least 7 feet from floor

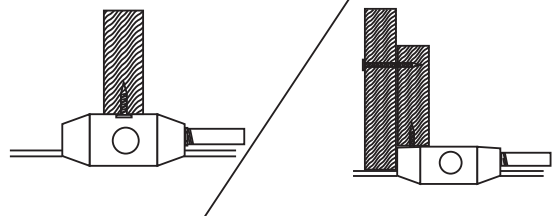
Note 1:

Turn off power at breaker box to avoid possible electrical shock.



Note 2:

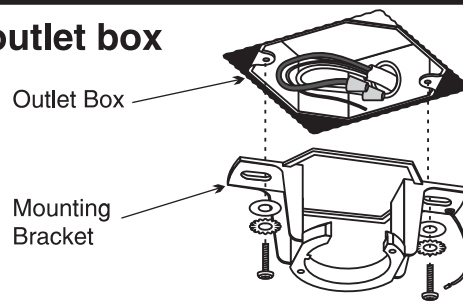
Use metal outlet box suitable for fan support.
Outlet box must support 35 lbs min.



1. HANGING SYSTEM INSTALLATION

1A. Installing mounting bracket to ceiling outlet box

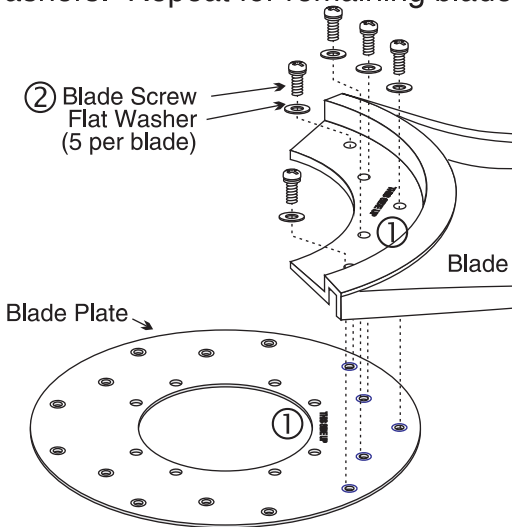
Install mounting bracket to outlet box in ceiling by using screws included with the outlet box and washers from the hardware bag.



2. BLADE INSTALLATION

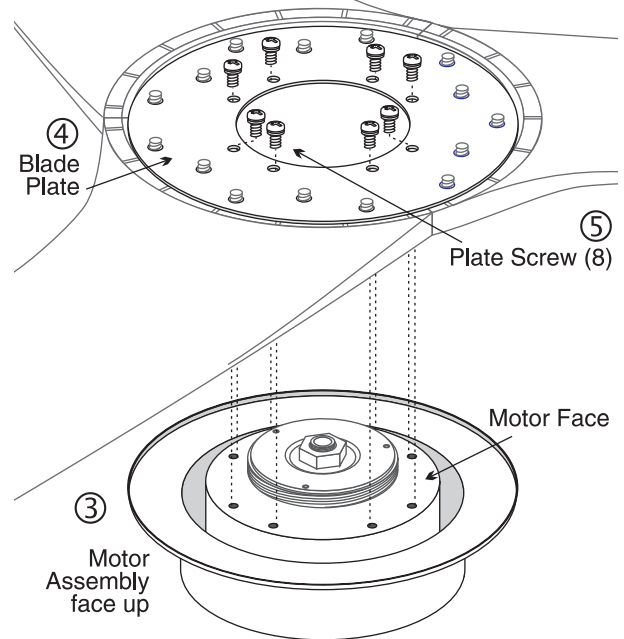
2. Installing the blades onto blade plate

- ① Lay the blade plate on a flat surface with the "This Side Up" facing up. Place the blade also with the "This Side Up" facing up.
- ② Align five holes in blade with the five on the blade plate and secure with blade screws and washers. Repeat for remaining blades.

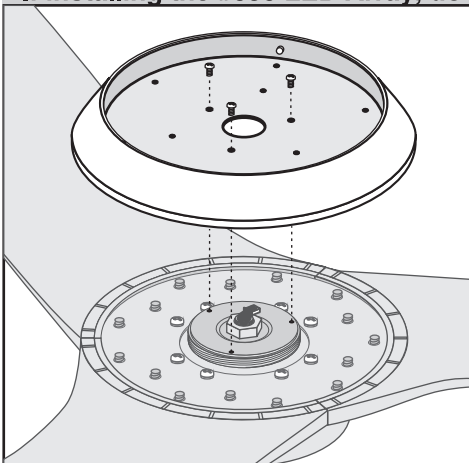


- ③ Place motor assembly motor-face-up in top styrofoam

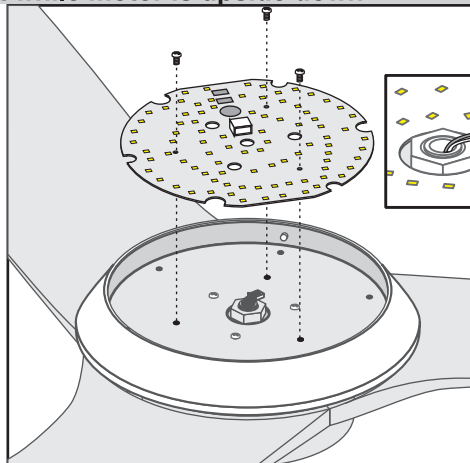
- ④ Carefully flip the blade assembly over so that the "This Side Up" is down and balance it on the motor face.
- ⑤ Align the eight holes in the blade plate to the eight in the motor face and secure with the eight Plate Screws.



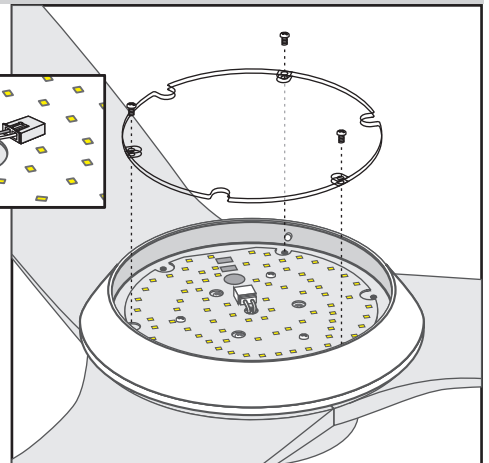
If installing the #650 LED Array, do it while motor is upside down.



Secure light pan to the light hub using 3 light pan screws.



Secure LED array to light pan with 3 array screws, and plug it in.

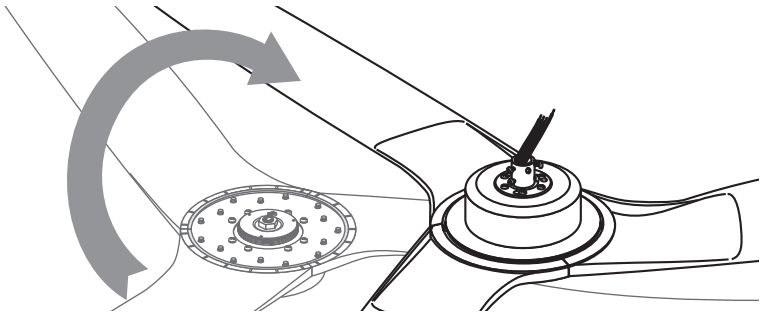


Secure clear lens to the light pan using 3 lens screws.

3. HANGING SYSTEM INSTALLATION

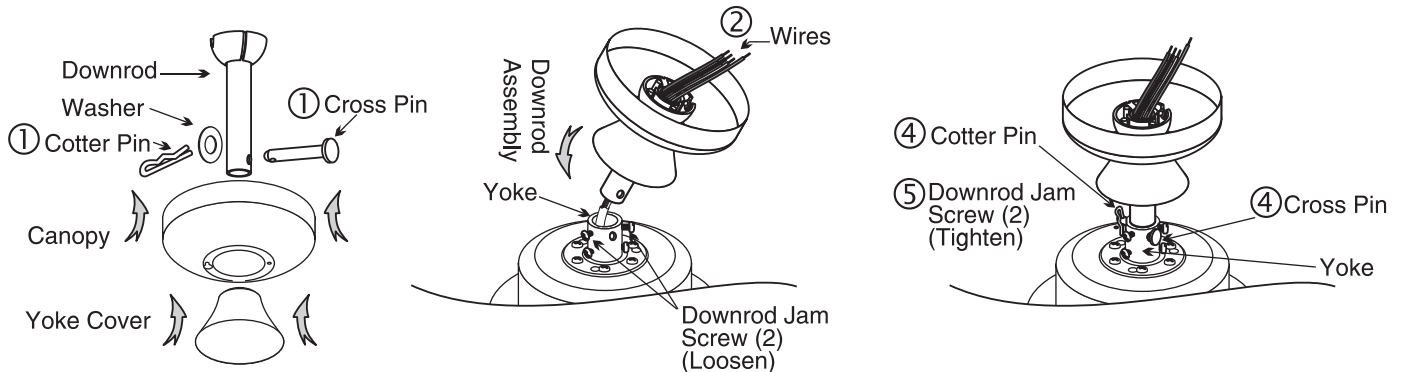
3A. Repositioning the Motor

Gently flip motor-blade assembly over and place motor right side up onto styrofoam packing.



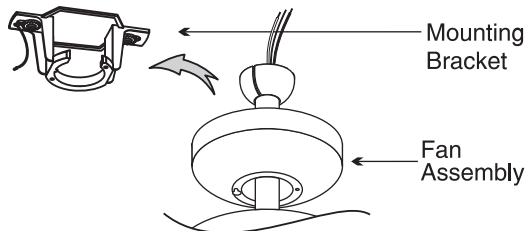
3B. Installing Downrod and Yoke

- ① Remove cross pin, washer and cotter pin from downrod.
- ② Insert downrod through canopy and yoke cover, and feed motor wires through downrod.
- ③ Loosen 2 downrod jam screws at yoke. Insert downrod assembly into yoke.
- ④ Insert the cross pin through yoke & downrod and secure with washer and cotter pin.
- ⑤ Tighten both downrod jam screws to further secure downrod.

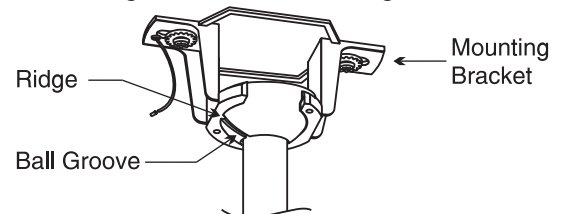


3C. Hanging the fan

Lift fan assembly onto the mounting bracket.



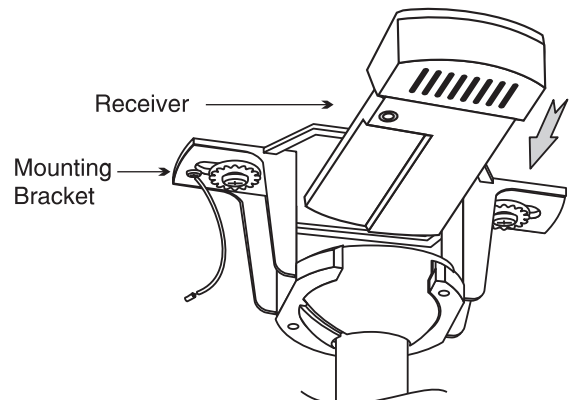
Rotate the fan so that the groove on the ball engages the ridge on the mounting bracket.



4. WIRING CONNECTION

4A. Insert receiver into mounting bracket

Note: Do not squeeze all the wires while inserting the receiver into the mounting bracket.



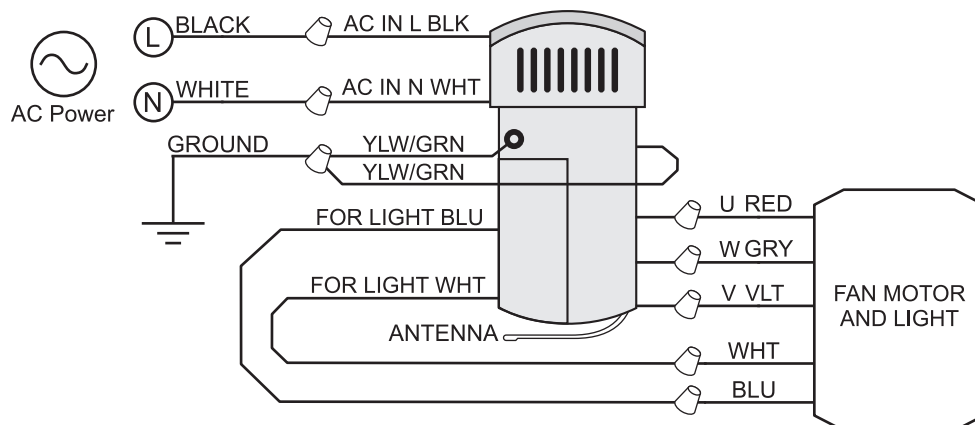
4. WIRING CONNECTION

continued

4B. Making electrical wire connections

Detailed instructions are enclosed with the remote.

For convenience basic wiring connections are shown here

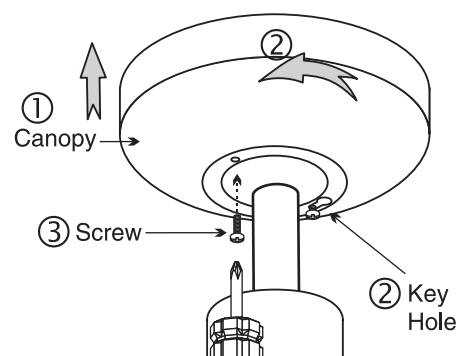


5. CANOPY INSTALLATION

5. Installing the canopy

Note: Two screws are pre-installed on mounting bracket for canopy installation. You will need to remove one and loosen the other slightly.

- ① Push up canopy until the screw still in the mounting bracket is engaged with the large end of the keyhole on canopy.
- ② Rotate canopy slightly until the screw head is engaged in the narrow end of the key hole.
- ③ Insert the remaining canopy screw into the other hole, and tighten both canopy screws.

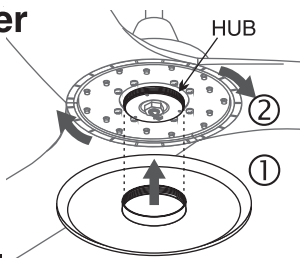


6. COVER INSTALLATION

Non-Lighted Installation...

6. Installing the Cover

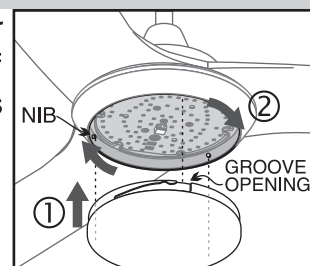
- ① Lift the cover up to the motor aligning the threaded opening to the threaded hub.
- ② Thread the cover clockwise until secure.



If you have installed the #650 Light...

6. Installing the Light Cover

- ① Lift light cover to motor aligning the opening of the grooves to the nibs inside the light pan.
- ② Rotate cover 1/4 turn clockwise to secure it to motor assembly.



7. REMOTE SETTING

7. Setting the Remote Control

Follow the separate instructions enclosed with the remote control.
This fan model has an optional integrated dimmable LED array;
Use the "D" dimming setting for the Light Function Select Switch.

For convenience the initial setup is summarized here. Install Batteries, ID the LEARN button, Turn on power, within 30 seconds press LEARN for approx 2 seconds. Bi-Bi = Done.

INSTALLATION IS COMPLETE